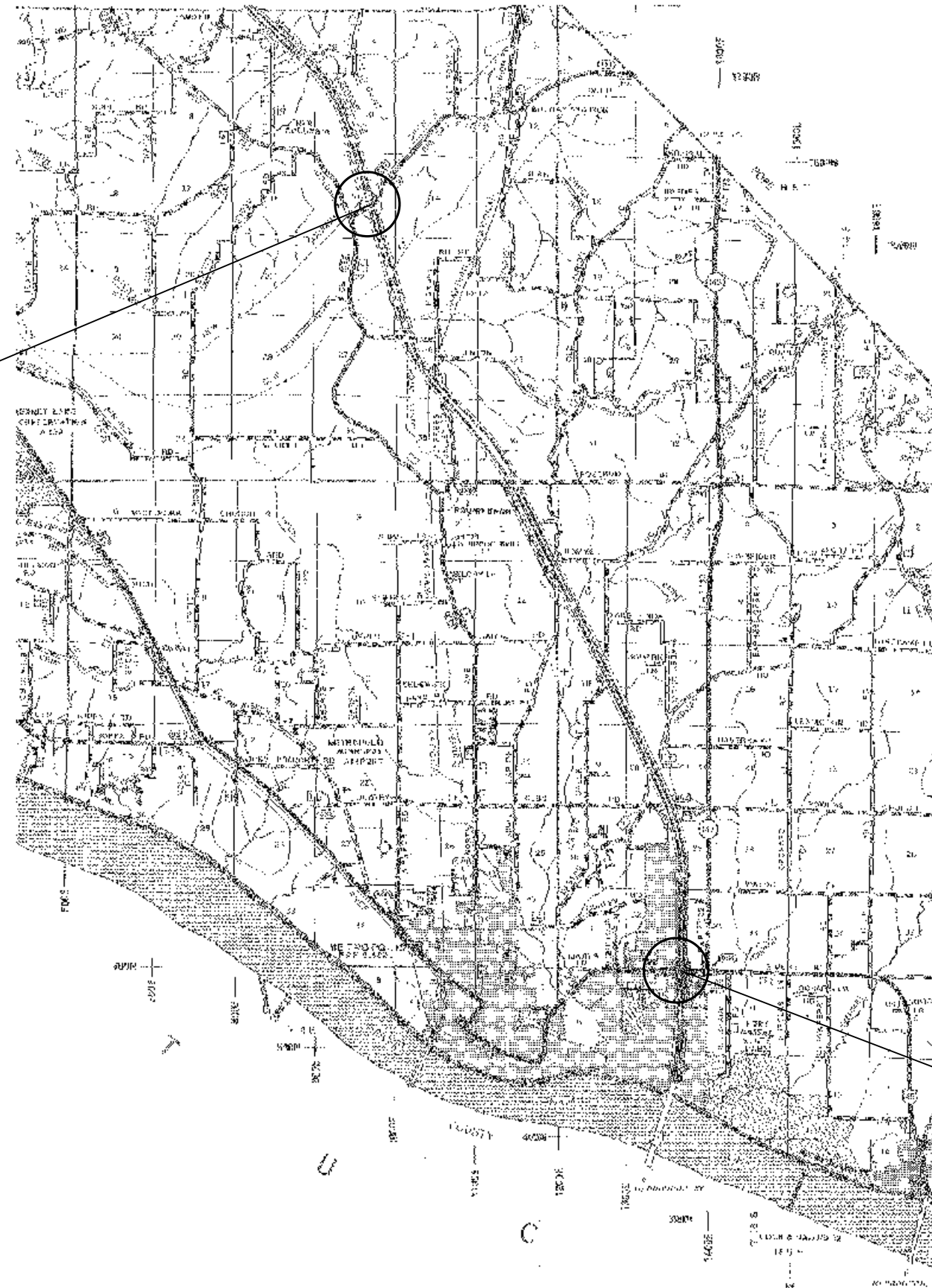


LOCATION #14 I-24 & CO RD 10  
(NEW COLUMBIA/BIG BAY)



LOCATION #15 I-24 & US 45  
(METROPOLIS)

FILE NAME =	USER NAME = \$USER*	DESIGNED -	REVISED -
ct:\pw\work\p\dot\col\emm\d0339264\78362-sh1-p1n.dgn		DRAWN -	REVISED -
\$MODELNAME*	PLOT SCALE = 100.0000' / in.	CHECKED -	REVISED -
	PLOT DATE = 3/29/2013	DATE -	REVISED -

**STATE OF ILLINOIS  
DEPARTMENT OF TRANSPORTATION**

**MASSAC COUNTY  
LOCATION MAP**

SCALE: SHEET OF SHEETS STA. TO STA.

F.A.I. RTE.	SECTION	COUNTY	TOTAL SHEETS	SHEET NO.
*	D9 SAFETY SIGNAGE 2013	VARIOUS	34	12
			CONTRACT NO. 78362	
ILLINOIS FED. AID PROJECT				

\* VARIOUS ROUTES