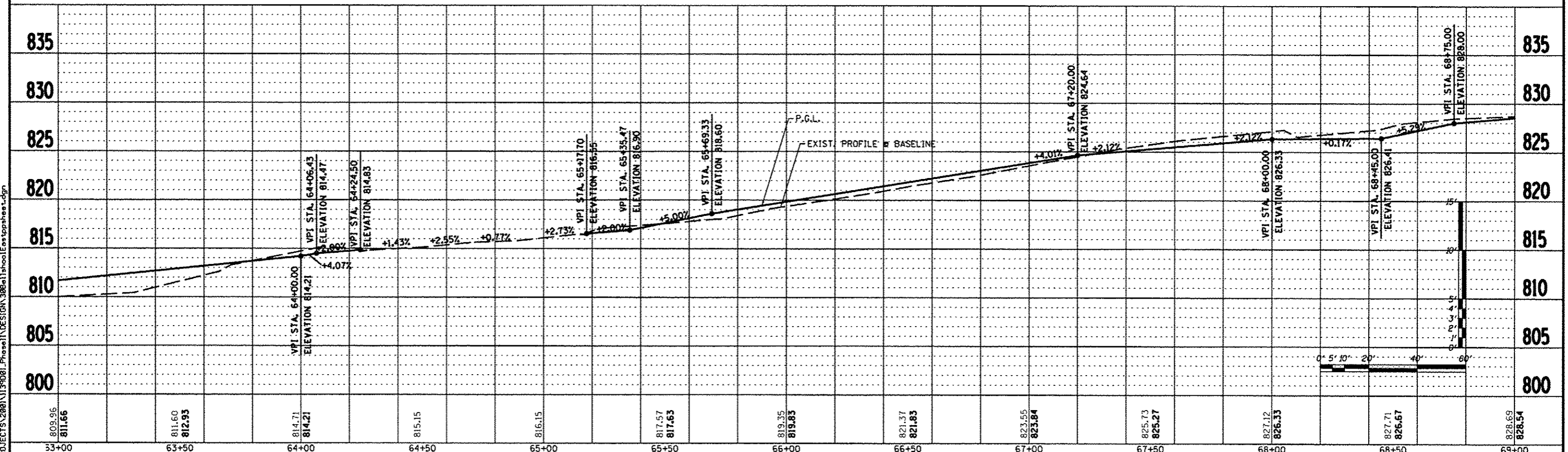
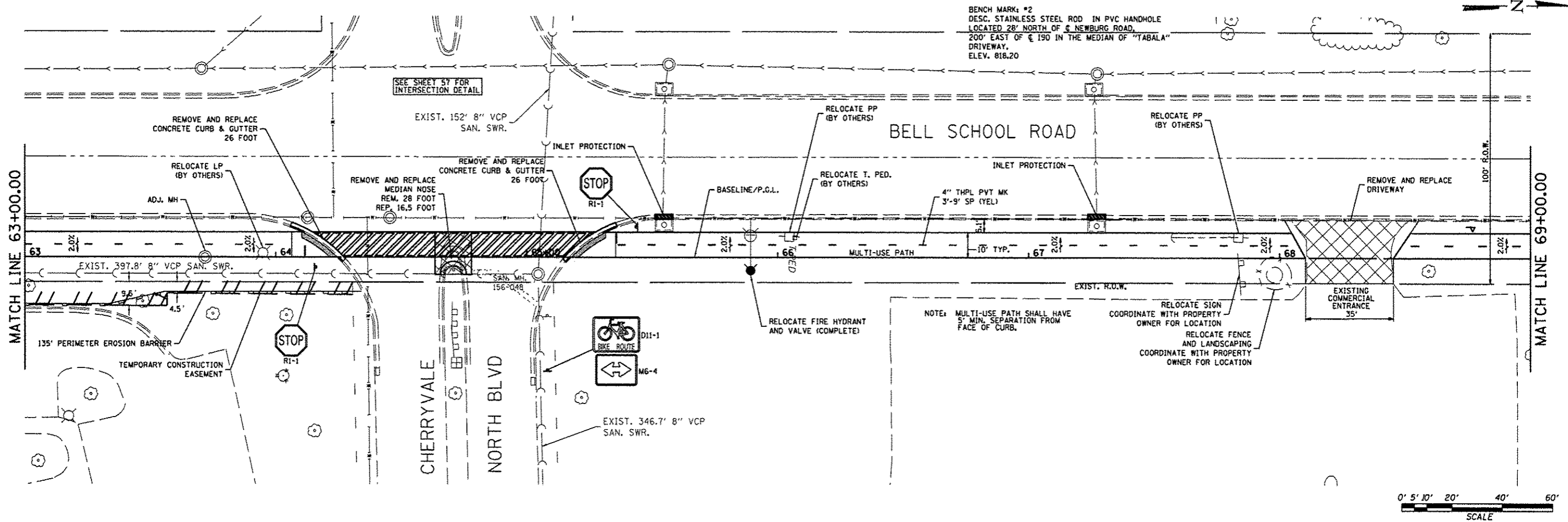


BENCH MARK: #2
DESC. STAINLESS STEEL ROD IN PVC HANDHOLE
LOCATED 28' NORTH OF E NEWBURG ROAD,
200' EAST OF E 190 IN THE MEDIAN OF "TABALA"
DRIVEWAY,
ELEV. 818.20



REVISION	DATE	BY	REMARKS
*1	03/22/13	TJA	100% COMMENTS FROM JAN. 28, 2013

WINNEBAGO COUNTY
VILLAGE OF CHERRY VALLEY
PERRYVILLE PATH SOUTHEAST CONNECTION



PERRYVILLE PATH
PLAN & PROFILE
STA. 63+00.00 - STA. 69+00.00

SECTION	COUNTY	TOTAL SHEETS	SHEET NO.
01-00302-00-BT	WINNEBAGO		
STA. 0+00.00 - STA. 172+20.37			
WHA #: 1139001	DATE: 03/01/2013	124	30

FILE: S:\PROJECTS\2008\1139001_Phase1\DESIGN\308e\1\Sheet\East\perryville.dgn