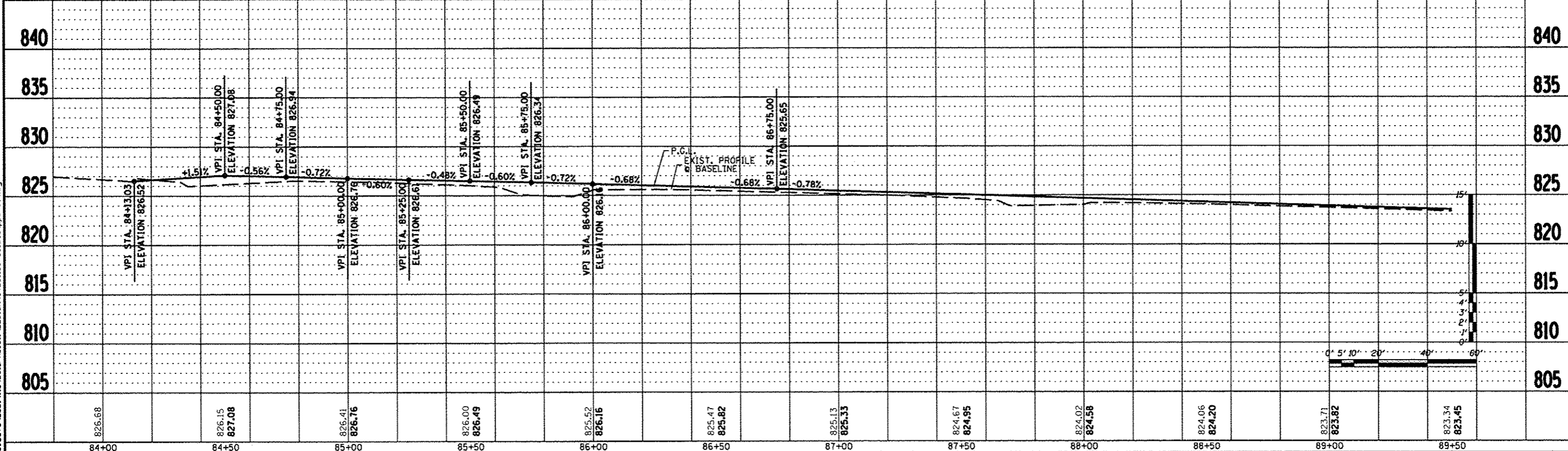


PROP. CURVE C22	PROP. CURVE C23
PI STA. = 86+35.05	PI STA. = 89+39.95
Δ = 1° 50' 21" (RT)	Δ = 2° 42' 52" (LT)
D = 1° 24' 59"	D = 1° 54' 13"
R = 4,045.08'	R = 3,010.00'
T = 64.92'	T = 71.32'
L = 129.84'	L = 142.61'
E = 0.52'	E = 0.84'
θ = ---	θ = ---
T.R. = ---	T.R. = ---
S.E. RUN = ---	S.E. RUN = ---
P.C. STA = 85+70.13	P.C. STA = 88+68.64
P.T. STA = 86+99.97	P.T. STA = 90+11.24



826.68	826.15	827.08	826.41	826.76	826.00	826.49	825.52	826.16	825.47	825.82	825.13	825.33	824.67	824.95	824.02	824.58	824.06	824.20	823.71	823.82	823.34	823.45		
84+00	84+50	85+00	85+50	86+00	86+50	87+00	87+50	88+00	88+50	89+00	89+50													
REVISION		DATE	BY	REMARKS	DRAWN		CHECKED		APPROVED		WINNEBAGO COUNTY		VILLAGE OF CHERRY VALLEY		PERRYVILLE PATH SOUTHEAST CONNECTION		PERRYVILLE PATH		PLAN & PROFILE		TOTAL SHEETS		SHEET NO.	
1		03/22/13	TJA	100% COMMENTS FROM JAN. 28, 2013	T.J.A.		C.J.B.		C.J.B.		COUNTY		WINNEBAGO		PERRYVILLE PATH		STA. 00+00.00 - STA. 172+20.37		STA. 83+50.00 - STA. 89+50.00		124		34	
											SECTION		COUNTY		DATE		WHA #:		DATE		1139D01		03/01/2013	

FILE = S:\PROJECTS\2008\1139D01\PhaseII\DESIGN\34BellSchool\West\ppsheet.dgn