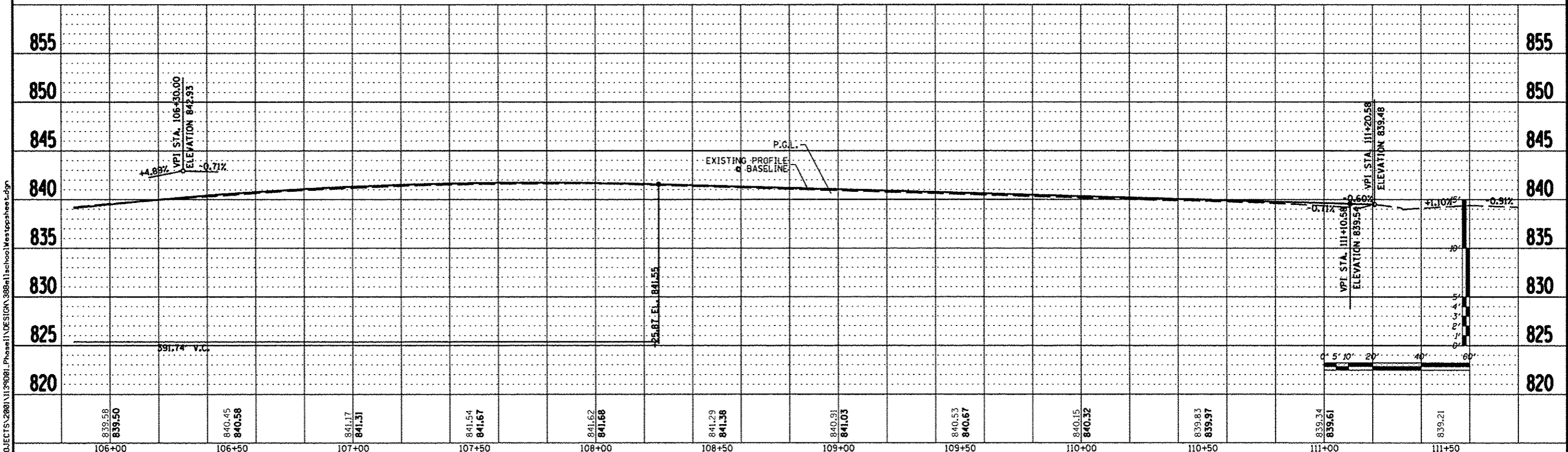


PROP. CURVE C26	PROP. CURVE C27	PROP. CURVE C28
PI STA. = 106+05.04	PI STA. = 109+28.52	PI STA. = 110+68.02
$\Delta = 2^\circ 51' 53''$ (RT)	$\Delta = 3^\circ 46' 29''$ (LT)	$\Delta = 12^\circ 15' 39''$ (LT)
D = 1' 08' 08"	D = 1' 56' 20"	D = 14' 34' 55"
R = 5,045.08'	R = 2,954.92'	R = 392.92'
T = 126.15'	T = 97.37'	T = 42.20'
L = 252.25'	L = 194.68'	L = 84.08'
E = 1.58'	E = 1.60'	E = 2.26'
$\theta =$ -----	$\theta =$ -----	$\theta =$ -----
T.R. = -----	T.R. = -----	T.R. = -----
S.E. RUN = -----	S.E. RUN = -----	S.E. RUN = -----
P.C. STA = 104+78.89	P.C. STA = 108+31.14	P.C. STA = 110+25.82
P.T. STA = 107+31.14	P.T. STA = 110+25.82	P.T. STA = 111+09.90



839.58 839.50	840.45 840.58	841.17 841.31	841.54 841.67	841.62 841.68	841.29 841.36	840.91 841.03	840.53 840.67	840.15 840.32	839.83 839.97	839.34 839.61	839.21
106+00	106+50	107+00	107+50	108+00	108+50	109+00	109+50	110+00	110+50	111+00	111+50

REVISION	DATE	BY	REMARKS
*1	03/22/13	TJA	ADD COMMENTS FROM JAN. 28, 2013

DRAWN	Y.J.A.
CHECKED	C.J.B.
APPROVED	C.J.B.

WINNEBAGO COUNTY VILLAGE OF CHERRY VALLEY PERRYVILLE PATH SOUTHEAST CONNECTION		WILLET-HOFMANN ASSOCIATES, INC. ENGINEERING, ARCHITECTURE, LAND SURVEYING 57 AIRPORT DRIVE, ROCKFORD, IL 61109 T: 815-964-2827 DESIGN PRAC: #164-000118	PERRYVILLE PATH PLAN & PROFILE STA. 106+00.00 - STA. 111+75.00	
SECTION	COUNTY		TOTAL SHEETS	SHEET NO.
01-00302-00-BT	WINNEBAGO	124	38	

FILE = S:\PROJECTS\2008\1139001_Phase1\DESIGN\388e1\school\Westppshoe L.dgn