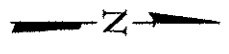
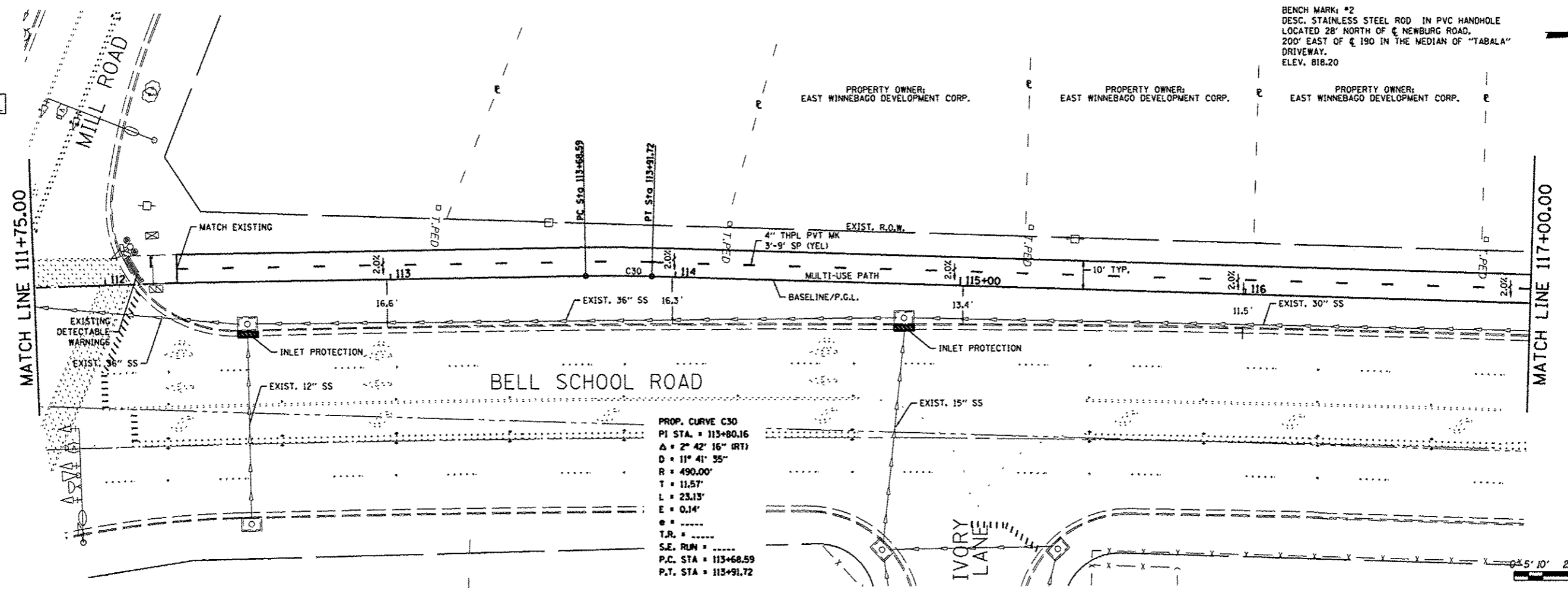


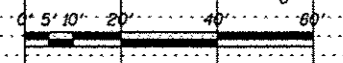
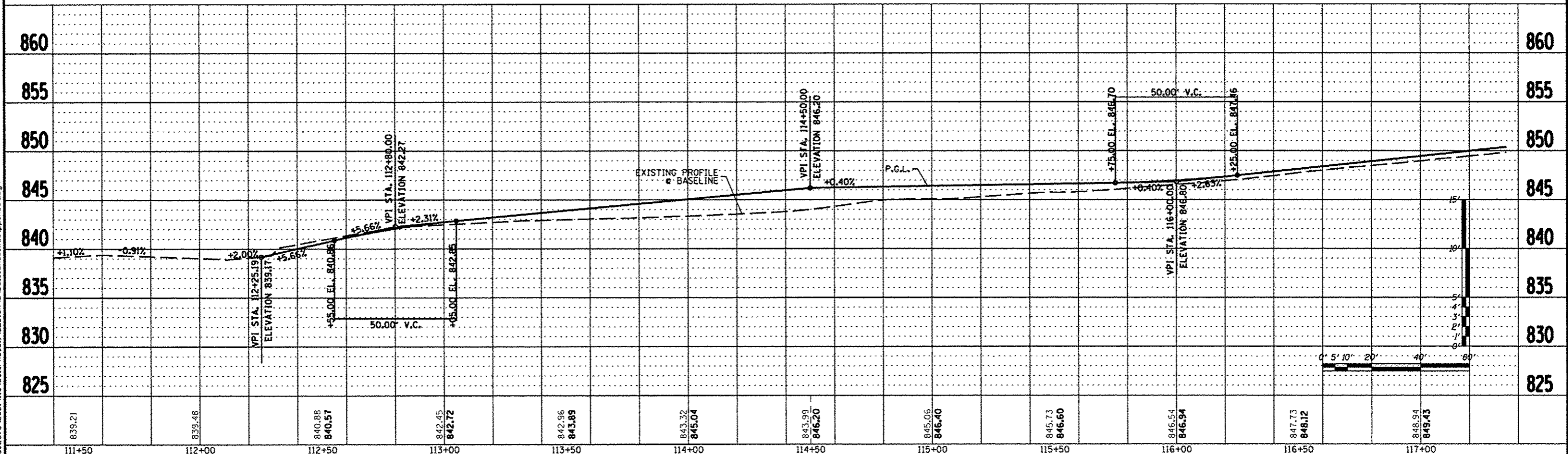
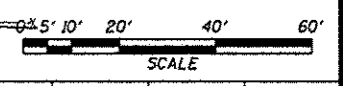
BENCH MARK: #2  
DESC. STAINLESS STEEL ROD IN PVC HANDHOLE  
LOCATED 28' NORTH OF E NEWBURG ROAD,  
200' EAST OF C 190 IN THE MEDIAN OF "TABALA"  
DRIVEWAY.  
ELEV. 818.20



SEE SHEET 61 FOR  
INTERSECTION DETAIL



PROP. CURVE C30  
PI STA. = 113+80.16  
Δ = 2° 42' 16" (RT)  
D = 11° 41' 35"  
R = 490.00'  
T = 11.57'  
L = 23.13'  
E = 0.14'  
T.R. = .....  
S.E. RUN = .....  
P.C. STA = 113+68.59  
P.T. STA = 113+91.72



FILE: S:\PROJECTS\2881\139001\Phase\DESIGN\3881\school\Westppsheet.cdw

839.21	839.48	840.88 840.57	842.45 842.72	842.96 843.89	843.32 845.04	843.99 846.20	845.06 846.40	845.73 846.60	846.54 846.94	847.73 848.12	848.94 849.43
111+50	112+00	112+50	113+00	113+50	114+00	114+50	115+00	115+50	116+00	116+50	117+00
REVISION		DATE	BY	REMARKS		DRAWN		T.J.A.		CHECKED	
*1		03/22/13	TJA	IDOT COMMENTS FROM JAN. 28, 2013		C.J.B.		C.J.B.		C.J.B.	
WINNEBAGO COUNTY				VILLAGE OF CHERRY VALLEY				PERRYVILLE PATH SOUTHEAST CONNECTION			
WILLETT HOFMANN & ASSOCIATES INC.				ENGINEERING ARCHITECTURE LAND SURVEYING				57 AIRPORT DRIVE, ROCKFORD, IL 61109			
PERRYVILLE PATH PLAN & PROFILE				SECTION 01-00302-00-BT				COUNTY WINNEBAGO			
STA. 111+75.00 - STA. 117+00.00				STA. 00+00.00 - STA. 172+20.37				TOTAL SHEETS 124			
STA. 111+75.00 - STA. 117+00.00				WHA #: 1139001				DATE: 03/01/2013			
								SHEET NO. 39			