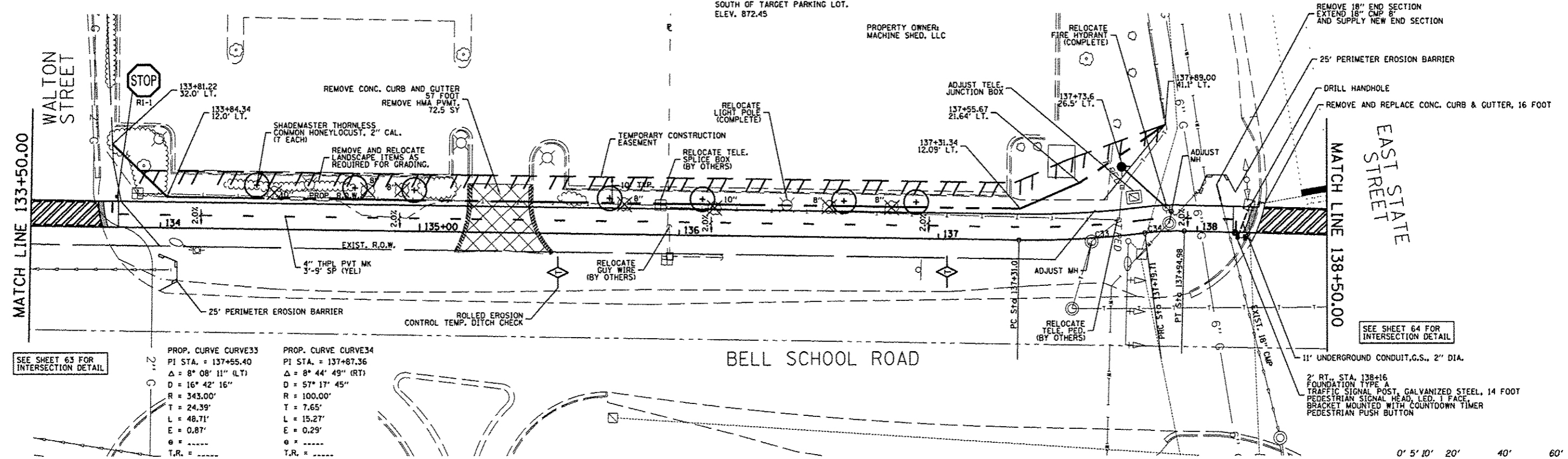
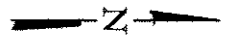


PROPERTY OWNER:  
MACHINE SHED, LLC

BENCH MARK: #3  
DESC. STAINLESS STEEL ROD IN PVC HANDHOLE  
LOCATED 65' EAST OF EOP TRAINER ROAD,  
46' NORTH OF EOP E. STATE ST.  
SOUTH OF TARGET PARKING LOT.  
ELEV. 872.45

PROPERTY OWNER:  
MACHINE SHED, LLC



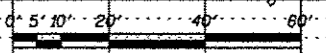
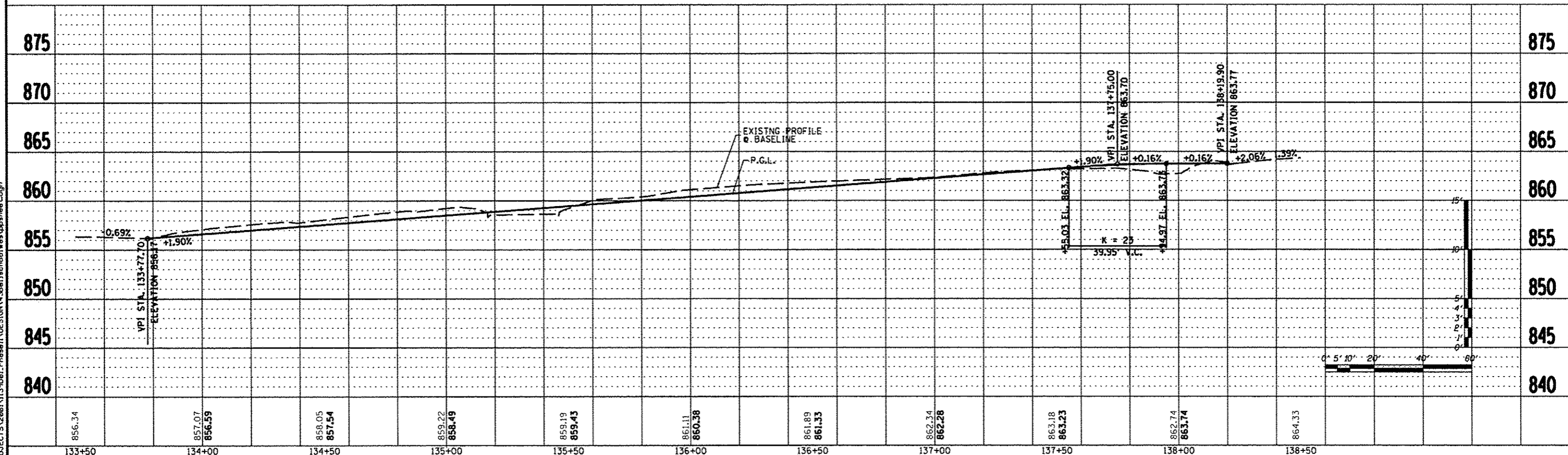
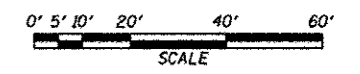
SEE SHEET 63 FOR  
INTERSECTION DETAIL

PROP. CURVE CURVE33  
PI STA. = 137+55.40  
Δ = 8° 08' 11" (LT)  
D = 16° 42' 16"  
R = 343.00'  
T = 24.39'  
L = 48.71'  
E = 0.87'  
θ = -----  
T.R. = -----  
S.E. RUN = -----  
P.C. STA = 137+31.01  
P.T. STA = 137+79.71

PROP. CURVE CURVE34  
PI STA. = 137+87.36  
Δ = 8° 44' 49" (RT)  
D = 57° 17' 45"  
R = 100.00'  
T = 7.65'  
L = 15.27'  
E = 0.29'  
θ = -----  
T.R. = -----  
S.E. RUN = -----  
P.C. STA = 137+79.71  
P.T. STA = 137+94.98

SEE SHEET 64 FOR  
INTERSECTION DETAIL

2' RT. STA. 138+16  
FOUNDATION TYPE A  
TRAFFIC SIGNAL POST, GALVANIZED STEEL, 14 FOOT  
PEDESTRIAN SIGNAL HEAD, LED, 1 FACE  
BRACKET MOUNTED WITH COUNTDOWN TIMER  
PEDESTRIAN PUSH BUTTON



REVISION	DATE	BY	REMARKS
#1	03/22/13	TJA	DDY COMMENTS FROM JAN. 28, 2013

DRAWN: T.J.A.  
CHECKED: C.J.B.  
APPROVED: C.J.B.

WINNEBAGO COUNTY  
VILLAGE OF CHERRY VALLEY  
PERRYVILLE PATH SOUTHEAST CONNECTION



STA. 133+50.00 - STA. 138+50.00

PERRYVILLE PATH  
PLAN & PROFILE

SECTION	COUNTY	TOTAL SHEETS	SHEET NO.
01-00302-00-BT	WINNEBAGO	124	43
STA. 00+00.00 - STA. 172+20.37			
WHA #: 1139001	DATE: 03/01/2013		

FILE: S:\PROJECTS\2013\139081\Phase1\DESIGN\438a\school\West\topsheet.dgn