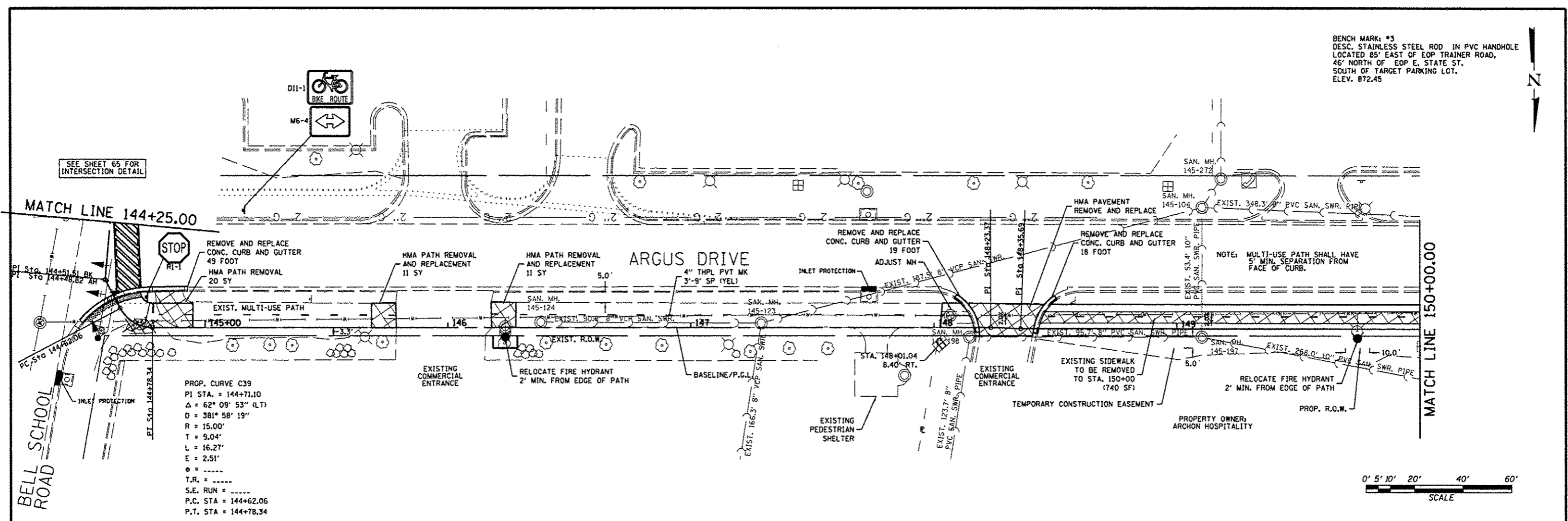
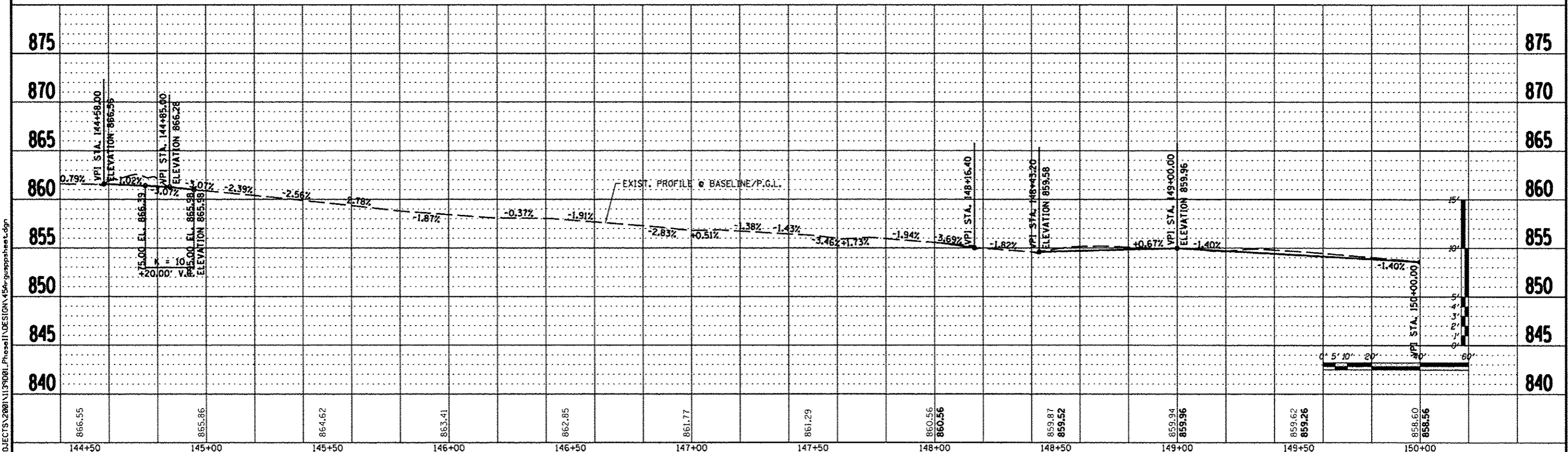
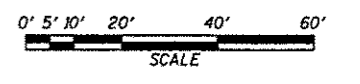


BENCH MARK: *3
DESC. STAINLESS STEEL ROD IN PVC HANDHOLE
LOCATED 85' EAST OF EOP TRAINER ROAD,
46' NORTH OF EOP E. STATE ST.
SOUTH OF TARGET PARKING LOT.
ELEV. 872.45



PROP. CURVE C39
PI STA. = 144+71.10
Δ = 62° 09' 53" (LT)
D = 381° 58' 19"
R = 15.00'
T = 9.04'
L = 16.27'
E = 2.51'
e = -----
T.R. = -----
S.E. RUN = -----
P.C. STA = 144+62.06
P.T. STA = 144+78.34



REVISION	DATE	BY	REMARKS
*1	03/22/13	T.J.A.	100% COMMENTS FROM JAN. 28, 2013

DRAWN T.J.A.
CHECKED C.J.B.
APPROVED C.J.B.

WINNEBAGO COUNTY
VILLAGE OF CHERRY VALLEY
PERRYVILLE PATH SOUTHEAST CONNECTION

WILLETT HOFMANN & ASSOCIATES INC.
ENGINEERING ARCHITECTURE LAND SURVEYING
57 AIRPORT DRIVE, ROCKFORD, IL 61109
TEL: 815-964-2697 DESIGN PRAC: 4184-00918

**PERRYVILLE PATH
PLAN & PROFILE**
STA. 144 + 25.00 - STA. 150 + 00.00

SECTION	COUNTY	TOTAL SHEETS	SHEET NO.
01-00302-00-BT	WINNEBAGO		
STA. 00+00.00 - STA. 172+20.37			
WHA #: 1139001	DATE: 03/01/2013	124	45

FILE: S:\PROJECTS\2008\1139001_Perryville\DESIGN\150r-guappasheet.dgn