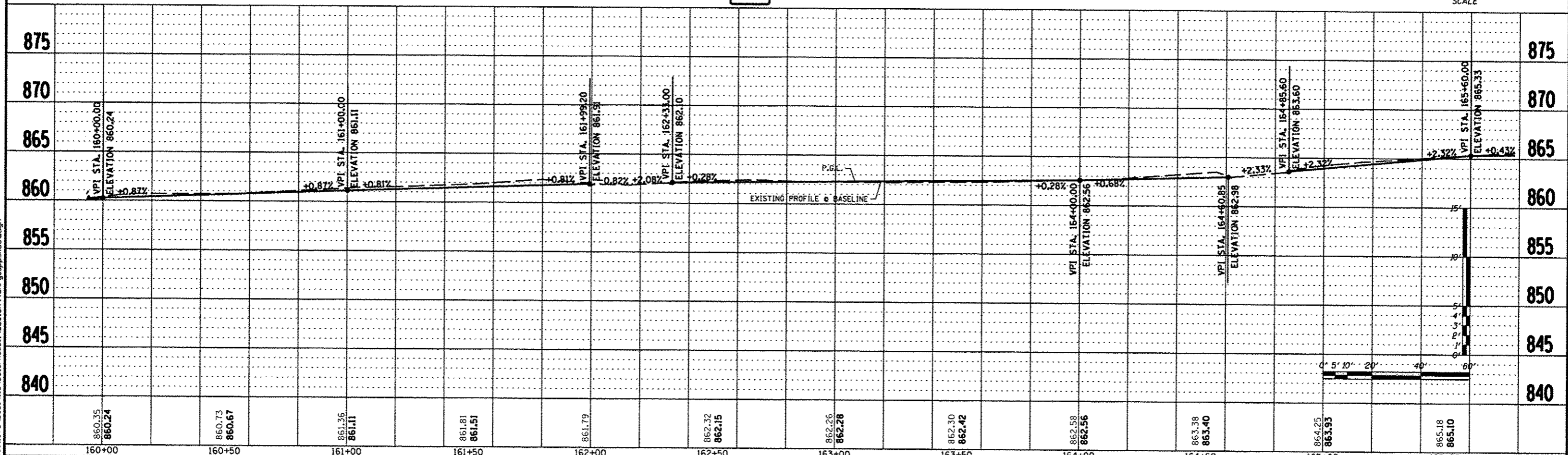
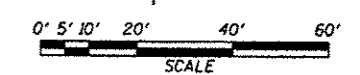
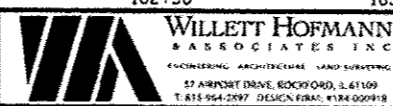


BENCH MARK #3
DESC. STAINLESS STEEL ROD IN PVC HANDHOLE
LOCATED 85' EAST OF EOP TRAINER ROAD,
46' NORTH OF EOP E. STATE ST.
SOUTH OF TARGET PARKING LOT,
ELEV. 872.45



REVISION	DATE	BY	REMARKS
1	03/22/13	TJA	100% COMMENTS FROM JAN. 28, 2013

WINNEBAGO COUNTY
VILLAGE OF CHERRY VALLEY
PERRYVILLE PATH SOUTHEAST CONNECTION



PERRYVILLE PATH
PLAN & PROFILE
 STA. 159+50.00 - STA. 165+50.00

SECTION	COUNTY	TOTAL SHEETS	SHEET NO.
01-00302-00-BT	WINNEBAGO	124	48
STA. 00+00.00 - STA. 172+20.37			
WHA #: 1139001	DATE: 03/01/2013		

FILE = S:\PROJECTS\2008\1139001_Phase1\10E\SIGN\48A-gusspsheet.dgn