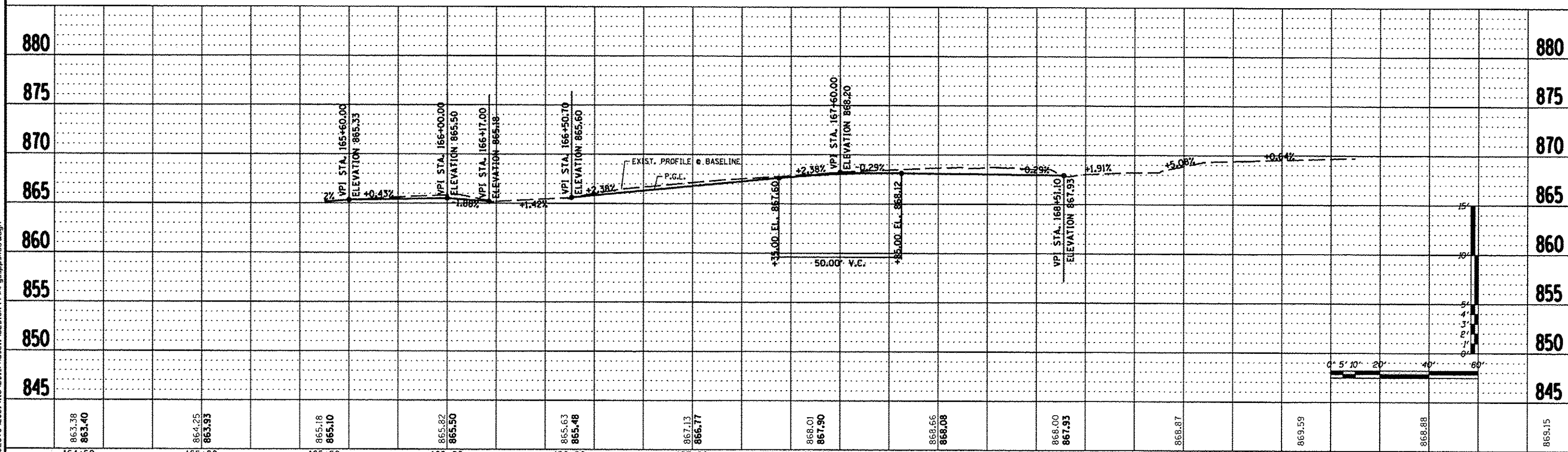
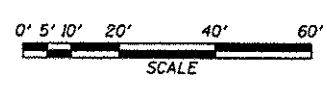


PROP. CURVE C58	PROP. CURVE C59
PI STA. = 168+30.32	PI STA. = 168+68.61
Δ = 6° 42' 38" (RT)	Δ = 6° 28' 58" (LT)
D = 57° 17' 45"	D = 52° 05' 13"
R = 100.00'	R = 110.00'
T = 5.86'	T = 6.23'
L = 11.71'	L = 12.45'
E = 0.17'	E = 0.18'
φ =	φ =
T.R. =	T.R. =
S.E. RUN =	S.E. RUN =
P.C. STA = 168+24.45	P.C. STA = 168+62.38
P.T. STA = 168+36.17	P.T. STA = 168+74.83

BENCH MARK: #3  
DESC. STAINLESS STEEL ROD IN PVC HANDHOLE  
LOCATED 85' EAST OF EOP TRAINER ROAD,  
46' NORTH OF EOP E. STATE ST.  
SOUTH OF TARGET PARKING LOT.  
ELEV. 872.45



FILE = S:\PROJECTS\2001\139081\_Perryville Path\DESIGN\49Argus.psd.dgn

863.38 863.40	864.25 863.93	865.18 865.10	865.82 865.50	865.63 865.48	867.13 866.77	868.01 867.90	868.66 868.08	868.00 867.93	868.87	869.59	868.88	869.15	
164+50	165+00	165+50	166+00	166+50	167+00	167+50	168+00	168+50	169+00	169+50	170+00	170+	
REVISION #1		DATE 03/22/13	BY T.J.A.	CHECKED C.J.B.		APPROVED C.J.B.		REMARKS 100% COMMENTS FROM JAN. 28, 2013					
DRAWN T.J.A.						CHECKED C.J.B.						APPROVED C.J.B.	
WINNEBAGO COUNTY						VILLAGE OF CHERRY VALLEY						PERRYVILLE PATH	
PERRYVILLE PATH						SOUTHEAST CONNECTION						WILLET HOPMANN & ASSOCIATES INC.	
STA. 165+50.00 - STA. 169+50.00						SECTION 01-00302-00-BT						COUNTY WINNEBAGO	
DATE: 03/01/2013						STA. 00+00.00 - STA. 172+20.37						TOTAL SHEETS 124	
WHA #: 1139001						DATE: 03/01/2013						SHEET NO. 49	