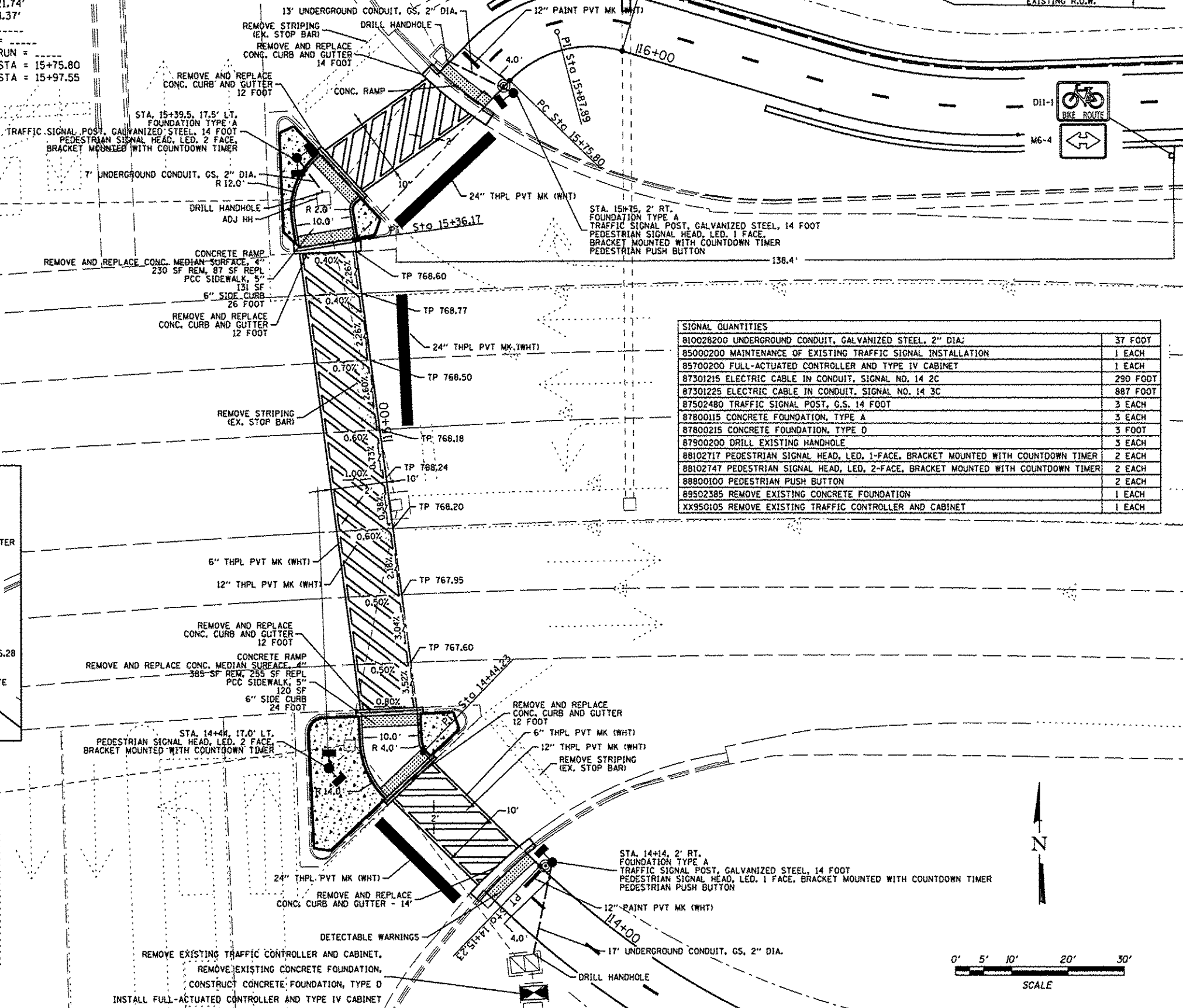
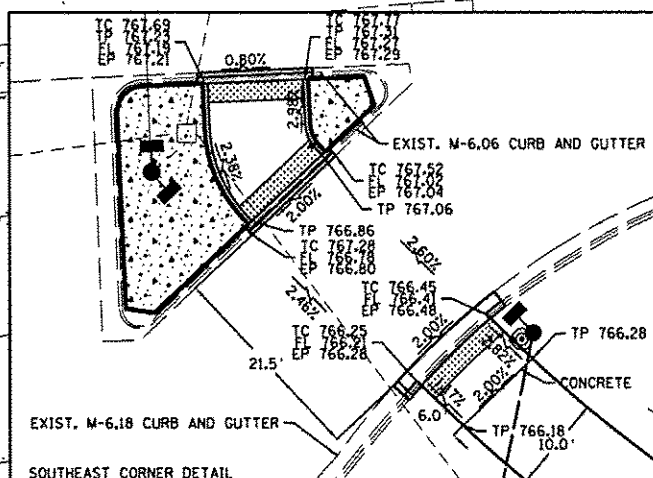
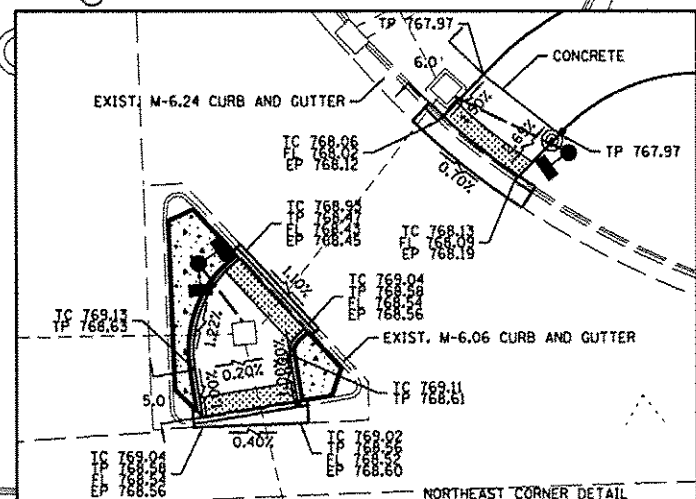
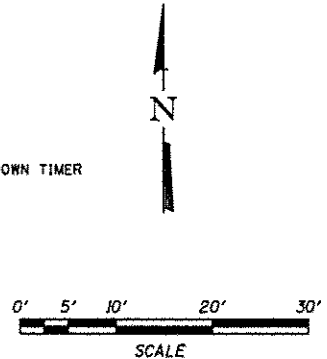


PROP. CURVE C6  
 PI STA. = 15+87.89  
 $\Delta = 62^\circ 17' 00''$  (RT)  
 $D = 286^\circ 28' 44''$   
 $R = 20.00'$   
 $T = 12.08'$   
 $L = 21.74'$   
 $E = 3.37'$   
 $e = \text{---}$   
 T.R. = ---  
 S.E. RUN = ---  
 P.C. STA = 15+75.80  
 P.T. STA = 15+97.55



SIGNAL QUANTITIES	
810028200 UNDERGROUND CONDUIT, GALVANIZED STEEL, 2" DIA.	37 FOOT
85000200 MAINTENANCE OF EXISTING TRAFFIC SIGNAL INSTALLATION	1 EACH
85700200 FULL-ACTUATED CONTROLLER AND TYPE IV CABINET	1 EACH
87301215 ELECTRIC CABLE IN CONDUIT, SIGNAL NO. 14 2C	290 FOOT
87301225 ELECTRIC CABLE IN CONDUIT, SIGNAL NO. 14 3C	887 FOOT
87502480 TRAFFIC SIGNAL POST, G.S. 14 FOOT	3 EACH
87800115 CONCRETE FOUNDATION, TYPE A	3 EACH
87800215 CONCRETE FOUNDATION, TYPE D	3 FOOT
87900200 DRILL EXISTING HANDHOLE	3 EACH
88102717 PEDESTRIAN SIGNAL HEAD, LED, 1-FACE, BRACKET MOUNTED WITH COUNTDOWN TIMER	2 EACH
88102747 PEDESTRIAN SIGNAL HEAD, LED, 2-FACE, BRACKET MOUNTED WITH COUNTDOWN TIMER	2 EACH
88800100 PEDESTRIAN PUSH BUTTON	2 EACH
89502385 REMOVE EXISTING CONCRETE FOUNDATION	1 EACH
XX950105 REMOVE EXISTING TRAFFIC CONTROLLER AND CABINET	1 EACH



FILE = S:\PROJECTS\2081\1139081\Phase1\DESIGN\51-69\intersection\c-03asingpl\sheet.dgn

REVISION	DATE	BY	REMARKS
01	03/22/13	TJA	DOT COMMENTS FROM JAN. 28, 2013

WINNEBAGO COUNTY  
 VILLAGE OF CHERRY VALLEY  
 PERRYVILLE PATH SOUTHEAST CONNECTION



PERRYVILLE PATH INTERSECTION CROSSING  
 HARRISON AVENUE STA. 15+00

SECTION	COUNTY	TOTAL SHEETS	SHEET NO.
01-00302-00-8T	WINNEBAGO	124	53