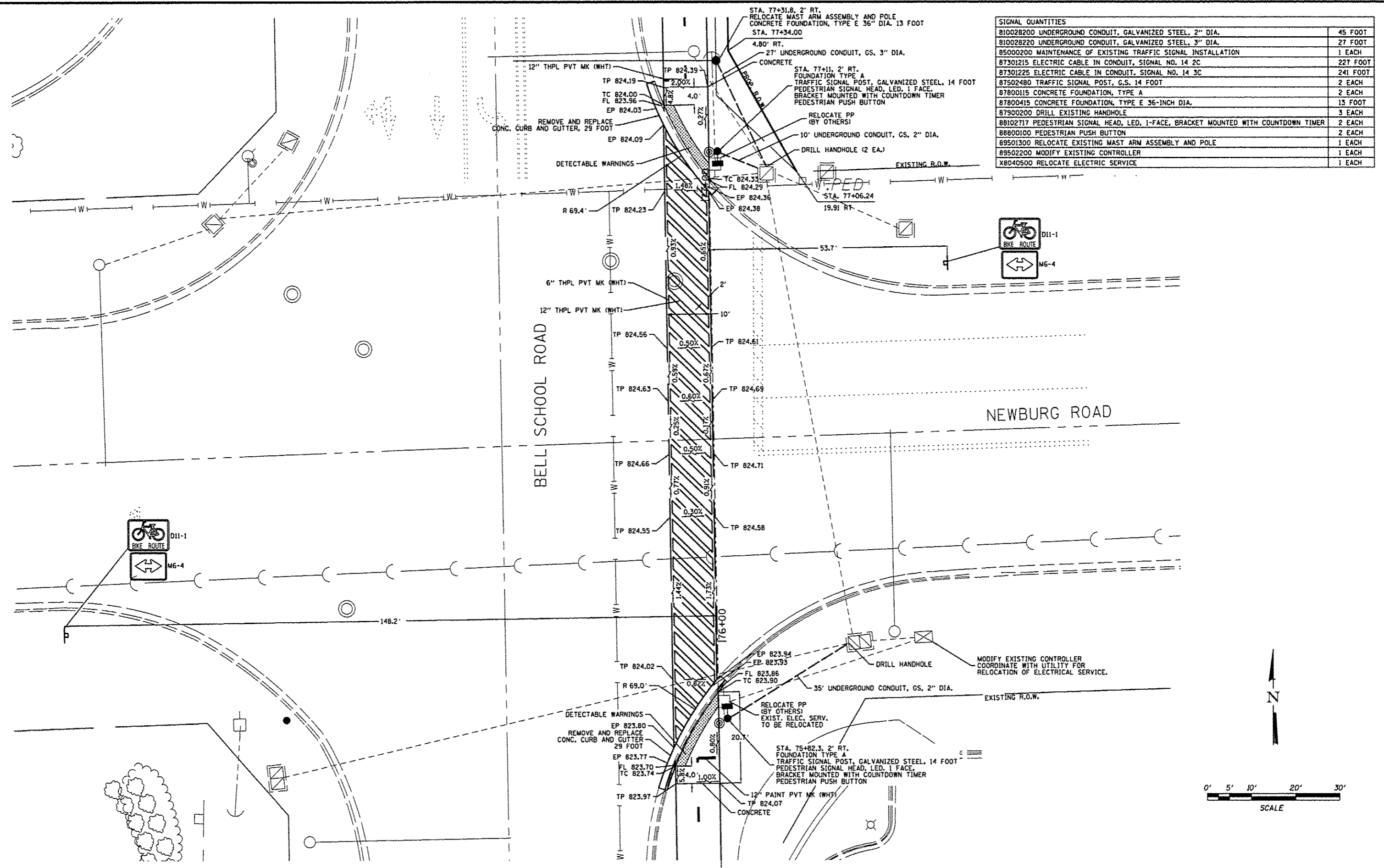
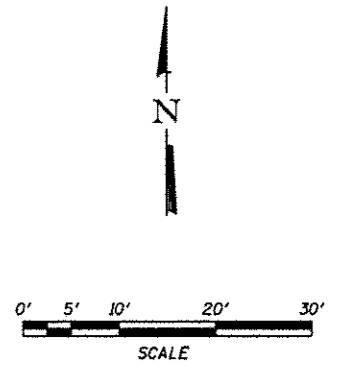


FILE = S:\PROJECTS\2008\1139081_Phase1\DESIGN\51-69\Inter-section\c-0301ngal\sheet.dgn



SIGNAL QUANTITIES	
810028200 UNDERGROUND CONDUIT, GALVANIZED STEEL, 2" DIA.	45 FOOT
810028220 UNDERGROUND CONDUIT, GALVANIZED STEEL, 3" DIA.	27 FOOT
85000200 MAINTENANCE OF EXISTING TRAFFIC SIGNAL INSTALLATION	1 EACH
87301215 ELECTRIC CABLE IN CONDUIT, SIGNAL NO. 14 2C	227 FOOT
87301225 ELECTRIC CABLE IN CONDUIT, SIGNAL NO. 14 3C	241 FOOT
87502480 TRAFFIC SIGNAL POST, G.S. 14 FOOT	2 EACH
87800115 CONCRETE FOUNDATION, TYPE A	2 EACH
87800415 CONCRETE FOUNDATION, TYPE E 36-INCH DIA.	13 FOOT
87900200 DRILL EXISTING HANDHOLE	3 EACH
88102717 PEDESTRIAN SIGNAL HEAD, LED, 1-FACE, BRACKET MOUNTED WITH COUNTDOWN TIMER	2 EACH
88800100 PEDESTRIAN PUSH BUTTON	2 EACH
89501300 RELOCATE EXISTING MAST ARM ASSEMBLY AND POLE	1 EACH
89502200 MODIFY EXISTING CONTROLLER	1 EACH
X8040500 RELOCATE ELECTRIC SERVICE	1 EACH



REVISION	DATE	BY	REMARKS
1	03/22/13	TJA	DOT COMMENTS FROM JAN. 28, 2013

WINNEBAGO COUNTY
VILLAGE OF CHERRY VALLEY
PERRYVILLE PATH SOUTHEAST CONNECTION


WILLETT HOFMANN
 ASSOCIATES INC.
ENGINEERING ARCHITECTURE LAND SURVEYING
 57 AIRPORT DRIVE, ROCKFORD, IL 61109
 T: 815.964.2597 DESIGN FAX: 815.964.2598

PERRYVILLE PATH INTERSECTION CROSSING
 NEWBURG ROAD STA. 76+50

SECTION	COUNTY	TOTAL SHEETS	SHEET NO.
01-00302-00-BT	WINNEBAGO	124	58
STA. WHA #:	DATE:		
1139001	03/01/2013		