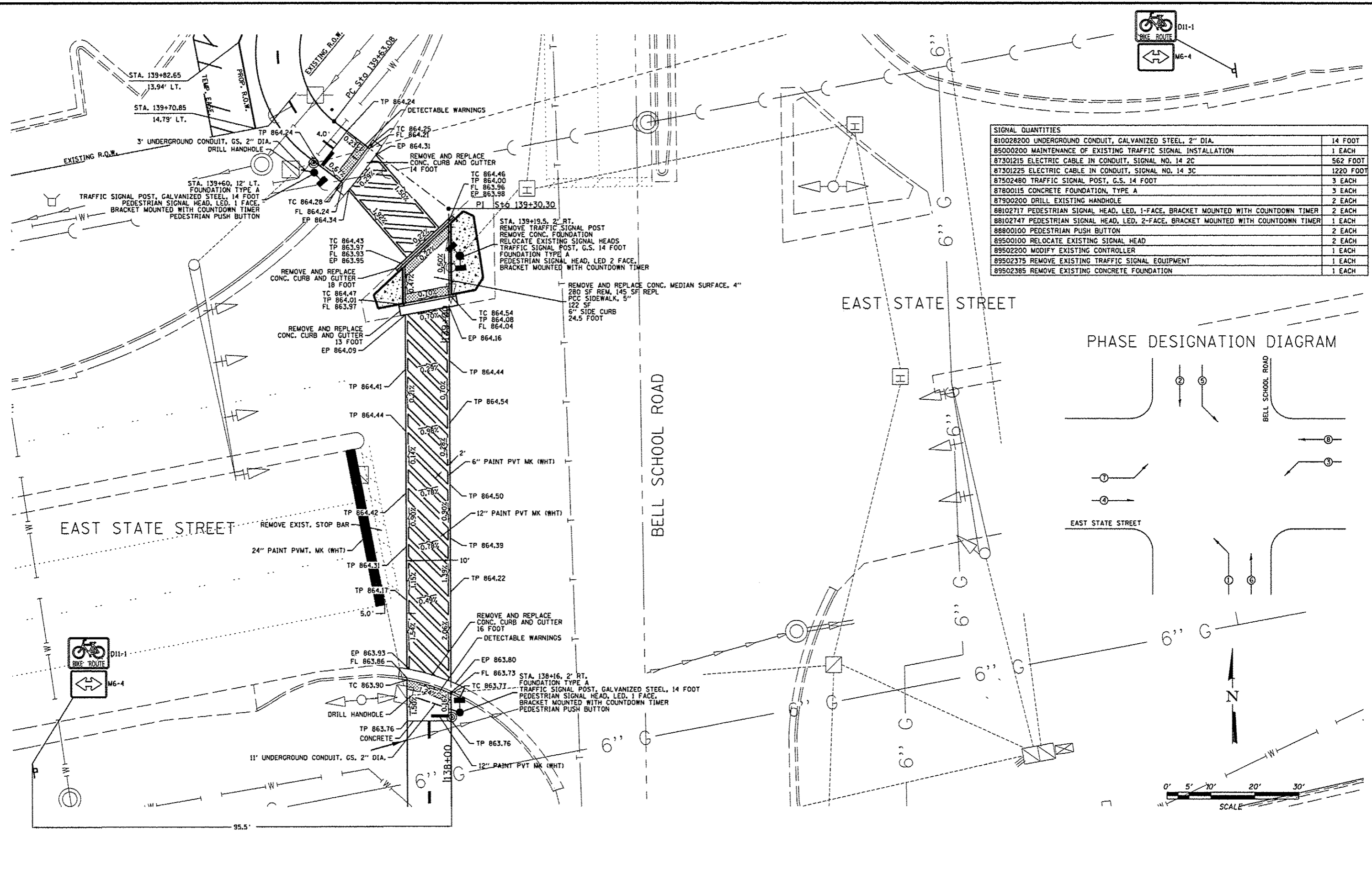
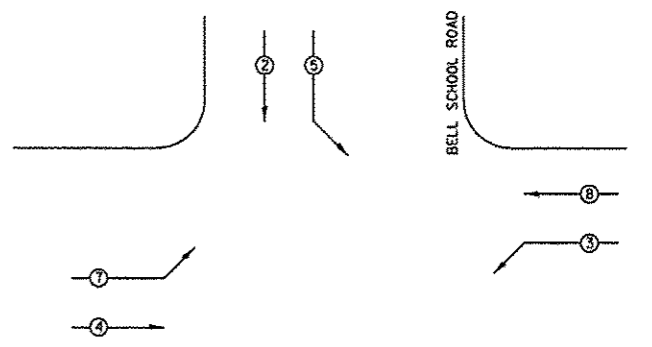


FILE = S:\PROJECTS\2008\1139001\Phase1\DESIGN\11-69\Intersection\Cr_casing\plan\sheet.dgn



SIGNAL QUANTITIES	
810028200 UNDERGROUND CONDUIT, GALVANIZED STEEL, 2" DIA.	14 FOOT
85000200 MAINTENANCE OF EXISTING TRAFFIC SIGNAL INSTALLATION	1 EACH
87301215 ELECTRIC CABLE IN CONDUIT, SIGNAL NO. 14 2C	562 FOOT
87301225 ELECTRIC CABLE IN CONDUIT, SIGNAL NO. 14 3C	1220 FOOT
87502480 TRAFFIC SIGNAL POST, G.S. 14 FOOT	3 EACH
87800115 CONCRETE FOUNDATION, TYPE A	3 EACH
87900200 DRILL EXISTING HANDHOLE	2 EACH
88102717 PEDESTRIAN SIGNAL HEAD, LED, 1-FACE, BRACKET MOUNTED WITH COUNTDOWN TIMER	2 EACH
88102747 PEDESTRIAN SIGNAL HEAD, LED, 2-FACE, BRACKET MOUNTED WITH COUNTDOWN TIMER	1 EACH
88800100 PEDESTRIAN PUSH BUTTON	2 EACH
89500100 RELOCATE EXISTING SIGNAL HEAD	2 EACH
89502200 MODIFY EXISTING CONTROLLER	1 EACH
89502375 REMOVE EXISTING TRAFFIC SIGNAL EQUIPMENT	1 EACH
89502385 REMOVE EXISTING CONCRETE FOUNDATION	1 EACH

PHASE DESIGNATION DIAGRAM



REVISION	DATE	BY	REMARKS
#1	03/22/13	TJA	100% COMMENTS FROM JAN. 28, 2013

DRAWN T.J.A.
 CHECKED C.J.B.
 APPROVED C.J.B.
WINNEBAGO COUNTY
VILLAGE OF CHERRY VALLEY
PERRYVILLE PATH SOUTHEAST CONNECTION

WILLET H HOFMANN & ASSOCIATES INC.
 ENGINEERING ARCHITECTURE LAND SURVEYING
 57 AIRPORT DRIVE, ROCKFORD, IL 61109
 T: 815-964-2672 DESIGN: 6784-000118

PERRYVILLE PATH INTERSECTION CROSSING
EAST STATE STREET STA. 138+50

SECTION	COUNTY	TOTAL SHEETS	SHEET NO.
01-00302-00-BT	WINNEBAGO	124	64

STA. - STA.
 WHA #: 1139001 DATE: 03/01/2013