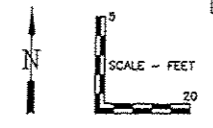


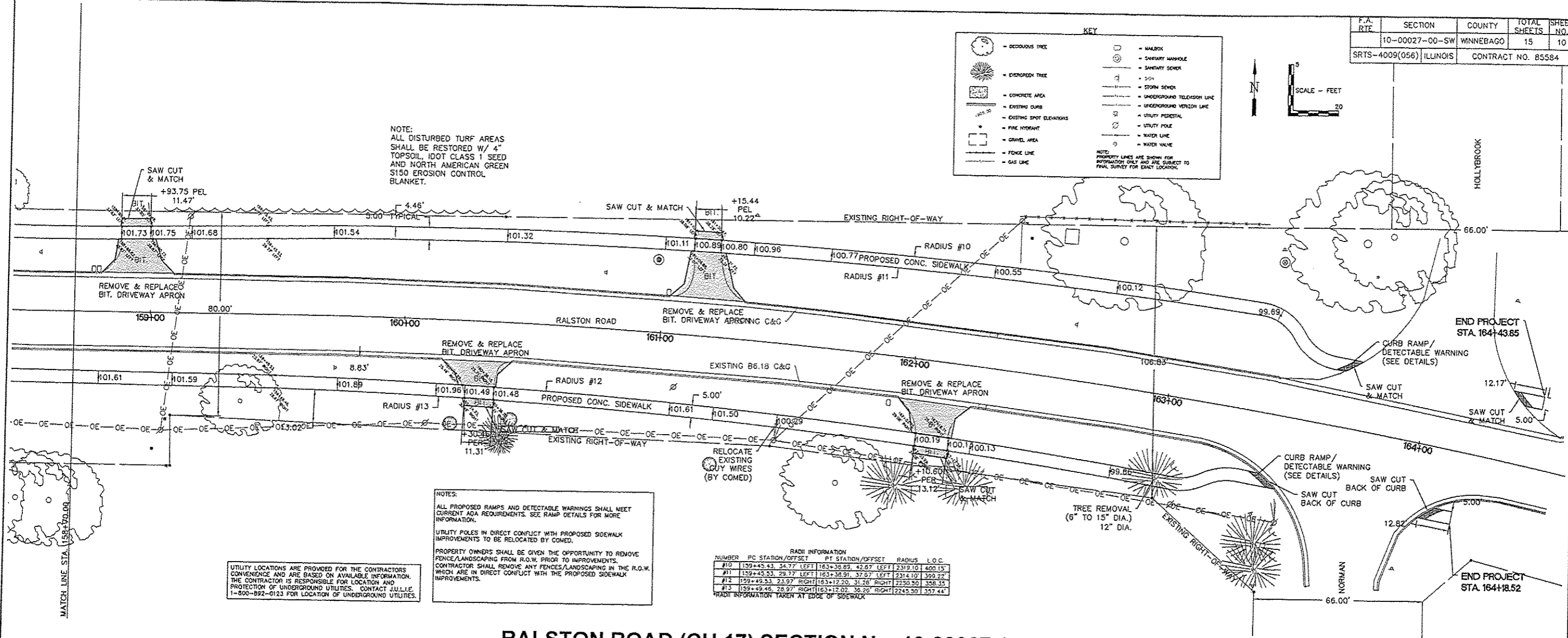
KEY

- DECIDUOUS TREE
- EVERGREEN TREE
- CONCRETE AREA
- EXISTING CURB
- EXISTING SPOT ELEVATIONS
- PAVE HYDRANT
- GRAVEL AREA
- FENCE LINE
- GAS LINE
- WALKWAY
- SAFETY HAZARDOUS
- SAFETY HAZARDOUS
- SPW
- STORM SEWER
- UNDERGROUND TELEVISION LINE
- UNDERGROUND TELEVISION LINE
- UTILITY PEDISTAL
- UTILITY POLE
- WATER LINE
- WATER VALVE

NOTE: PROPERTY LINES ARE SHOWN FOR INFORMATION ONLY AND ARE SUBJECT TO FINAL SURVEY FOR EXACT LOCATION.



NOTE:
ALL DISTURBED TURF AREAS SHALL BE RESTORED W/ 4" TOPSOIL, IDOT CLASS 1 SEED AND NORTH AMERICAN GREEN S150 EROSION CONTROL BLANKET.



NOTES:
ALL PROPOSED RAMPS AND DETECTABLE WARNINGS SHALL MEET CURRENT ADA REQUIREMENTS. SEE RAMP DETAILS FOR MORE INFORMATION.
UTILITY POLES IN DIRECT CONFLICT WITH PROPOSED SIDEWALK IMPROVEMENTS TO BE RELOCATED BY COMED.
PROPERTY OWNERS SHALL BE GIVEN THE OPPORTUNITY TO REMOVE FENCE/LANDSCAPING FROM R.O.W. PRIOR TO IMPROVEMENTS.
CONTRACTOR SHALL REMOVE ANY FENCES/LANDSCAPING IN THE R.O.W. WHICH ARE IN DIRECT CONFLICT WITH THE PROPOSED SIDEWALK IMPROVEMENTS.

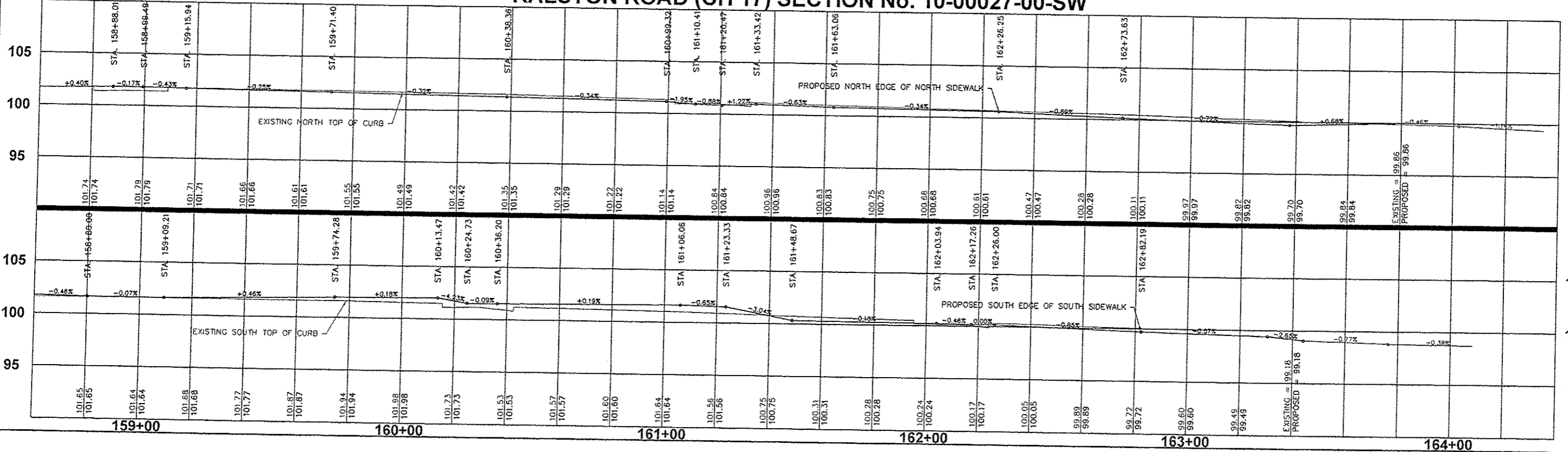
UTILITY LOCATIONS ARE PROVIDED FOR THE CONTRACTOR'S CONVENIENCE AND ARE BASED ON AVAILABLE INFORMATION. THE CONTRACTOR IS RESPONSIBLE FOR LOCATION AND PROTECTION OF UNDERGROUND UTILITIES. CONTACT JULLIE PEREIRA AT 1-800-892-0123 FOR LOCATION OF UNDERGROUND UTILITIES.

RADI INFORMATION

NUMBER	PC STATION/OFFSET	PT STATION/OFFSET	RADIUS	L.O.C.
#10	159+45.43 34.77 LEFT	163+38.89 42.67 LEFT	2319.10	400.15
#11	159+45.53 28.77 LEFT	163+38.91 37.67 LEFT	2314.10	399.22
#12	159+49.53 23.97 RIGHT	163+12.20 31.26 RIGHT	2250.30	358.35
#13	159+49.46 28.97 RIGHT	163+12.02 36.26 RIGHT	2245.30	357.44

RADI INFORMATION TAKEN AT EDGE OF SIDEWALK

RALSTON ROAD (CH 17) SECTION No. 10-00027-00-SW



STATE OF ILLINOIS
SAFE ROUTES TO SCHOOL SIDEWALK IMPROVEMENTS
VILLAGE OF MACHESNEY PARK/CITY OF LOVES PARK

DESIGNED J.W.K.	DRAWN J.J.D.
SCALE HORIZ. 1" = 20' VERT. 1" = 5'	
PROJECT NO. M0031-71-0102	
DATE JAN. 18, 2013	
SHEET NO. 10	