

- 1 COVER SHEET
- 2 SUMMARY OF QUANTITIES, SCHEDULE OF QUANTITIES
- 3 GENERAL NOTES
- 4-5 TYPICAL SECTIONS
- 6 PLAN / PROFILE - WINDSOR
- 7 PLAN / PROFILE - ELKHORN
- 8-10 PLAN / PROFILE - RALSTON
- 11 CROSS SECTIONS - WINDSOR
- 12 CROSS SECTIONS - RALSTON
- 13 RAMP DETAILS - WINDOR / ELKHORN & RALSTON
- 14 RAMP DETAILS - RALSTON
- 15 DETAILS

F.A. RTE	SECTION	COUNTY	TOTAL SHEETS	SHEET NO.
	10-00027-00-SW	WINNEBAGO	15	1
SRTS-4009(056)		ILLINOIS	CONTRACT NO. 85584	

# STATE OF ILLINOIS

## SAFE ROUTES TO SCHOOL

### SIDEWALK IMPROVEMENTS

SECTION NUMBER: 10-00027-00-SW  
 PROJECT NUMBER: SRTS-4009(056)  
 JOB NUMBER: C-40-047-09  
 CONTRACT No. 85584

**VILLAGE OF MACHESNEY PARK/CITY OF LOVES PARK**  
**WINNEBAGO COUNTY, ILLINOIS**

**HIGHWAY STANDARDS**

- 424001-07 PERPENDICULAR CURB RAMPS FOR SIDEWALKS
- 424006-01 DIAGONAL CURB RAMPS FOR SIDEWALKS
- 701006-04 OFF-RD OPERATIONS, 2L 2W, 15'(4.5m) TO 24"(600mm) FROM PAVEMENT EDGE
- 701101-03 OFF-RD OPERATIONS, MULTILANE, 15'(4.5m) TO 24"(600mm) FROM PAVEMENT EDGE
- 701301-04 LANE CLOSURE, 2L, 2W, SHORT TIME OPERATIONS
- 701501-06 URBAN LANE CLOSURE, 2L, 2W, UNDIVIDED
- 701801-05 SIDEWALK, CORNER OR CROSSWALK CLOSURE
- 701901-02 TRAFFIC CONTROL DEVICES
- 720011-01 METAL POSTS FOR SIGNS, MARKERS & DELINEATORS
- 728001-01 TELESCOPING STEEL SIGN SUPPORT
- 729001-01 APPLICATIONS OF TYPES A & B METAL POSTS (FOR SIGNS & MARKERS)
- 780001-03 TYPICAL PAVEMENT MARKINGS
- 876001-02 PEDESTRIAN PUSHBUTTON POST
- 878001-09 CONCRETE FOUNDATION DETAILS

**UTILITIES**

**ELECTRIC:**  
 COMMONWEALTH EDISON COMPANY  
 123 ENERGY AVENUE  
 ROCKFORD, IL 61109  
 (800) 334-7661

**GAS**  
 NICOR  
 4651 LINDEN ROAD  
 ROCKFORD, IL 61109  
 (888) 642-6748

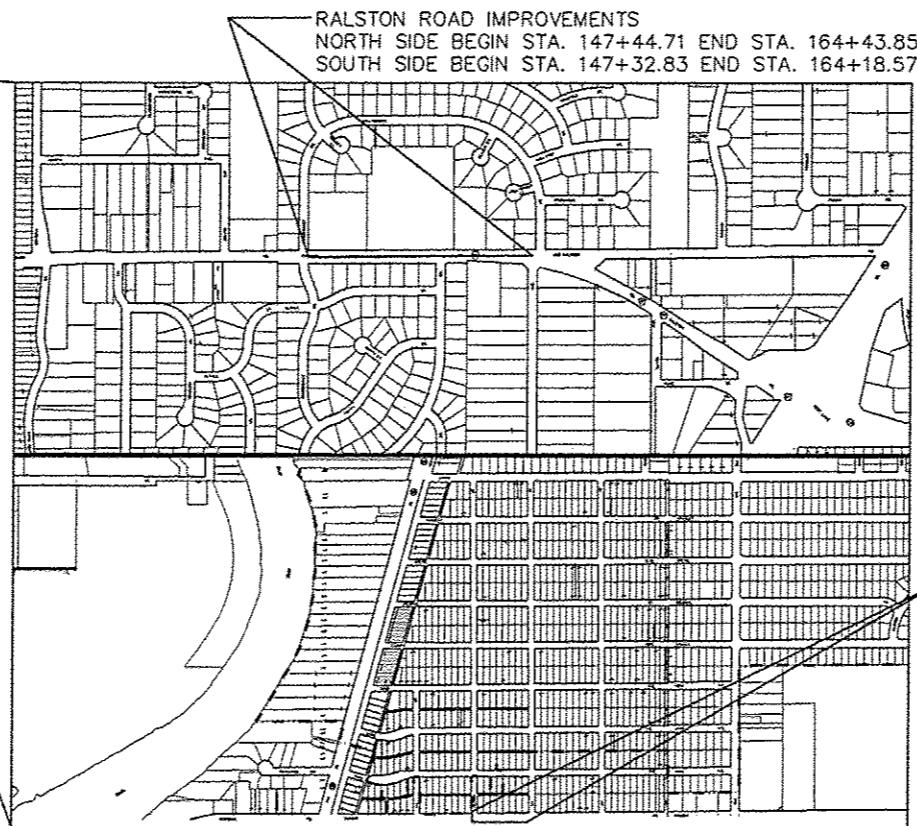
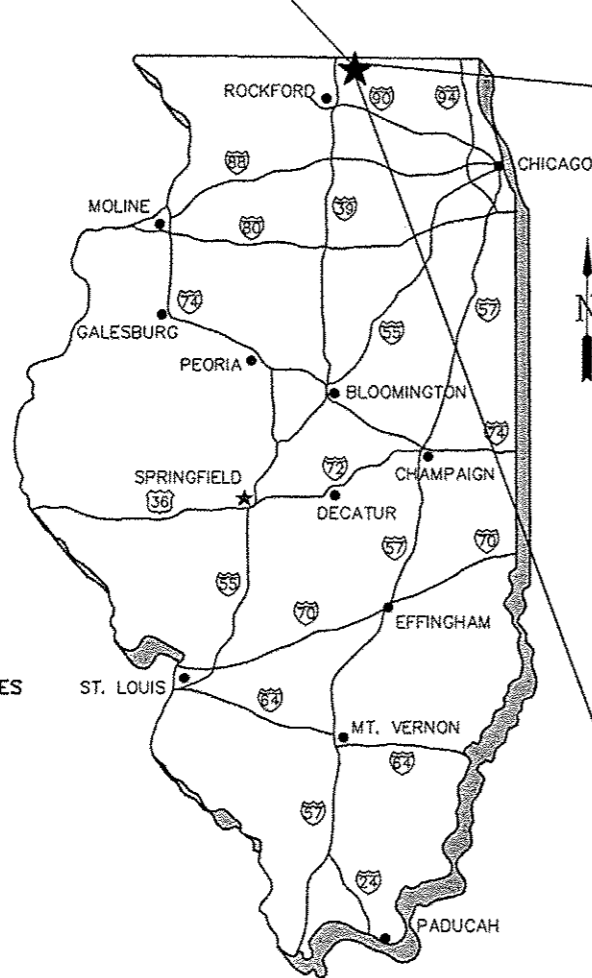
**SANITARY SEWER**  
 R.R.W.R.D.  
 3333 KISHWAUKEE STREET  
 ROCKFORD, IL 61109  
 (815) 387-7660

**WATER**  
 N.P.P.W.D.  
 1350 TURRET DRIVE  
 MACHESNEY PARK, IL 61115  
 (815) 633-5461

**TELEPHONE**  
 PROGRESSIVE COMMUNICATIONS SERVICES  
 625 PURPLE SAGE DRIVE  
 ROSCOE, IL 61073

**CABLE T.V.**  
 COMCAST  
 4450 KISHWAUKEE STREET  
 ROCKFORD, IL 61109  
 (815) 395-8977

VILLAGE OF MACHESNEY PARK



**RALSTON ROAD IMPROVEMENTS**  
 NORTH SIDE BEGIN STA. 147+44.71 END STA. 164+43.85  
 SOUTH SIDE BEGIN STA. 147+32.83 END STA. 164+18.57

MAP SCALE: NONE

PLAN & PROFILE — HORIZ. SCALE = 1" = 20'  
 VERT. SCALE = 1" = 5'

FUNCTIONAL CLASSIFICATION: RALSTON RD = COLLECTOR 10,800 ADT  
 ELKHORN ST = LOCAL <400 ADT  
 POSTED SPEED LIMIT: RALSTON RD = 35 MPH  
 ELKHORN ST = 30 MPH  
 NET LENGTH: RALSTON RD = 1588' = 0.300 MILES  
 ELKHORN ST = 2610' = 0.494 MILES

**WINDSOR ROAD**  
 (SOUTH SIDE ONLY)  
 BEGIN STA. 131+14.31  
 END STA. 135+33.38  
 ELKHORN STREET  
 (WEST SIDE ONLY)  
 BEGIN STA. 128+05.15  
 END STA. 129+13.51

AGENCY RESPONSIBLE FOR LETTING

APPROVED: <u>3-27-13</u> DATE  VILLAGE OF MACHESNEY PARK	
APPROVED: <u>3-27-13</u> DATE  CITY OF LOVES PARK	
APPROVED: <u>3/27/13</u> DATE  WINNEBAGO COUNTY Engineer	
PASSED: <u>April 11, 2013</u> DATE  DISTRICT #2 ENGINEER OF LOCAL ROADS & STREETS	
RELEASING FOR 'BID BASED ON LIMITED REVIEW: DATE: <u>April 11, 2013</u>  DEPUTY DIRECTOR OF HIGHWAYS, REGIN #2 ENGINEER	

REVISION #2 03/14/13

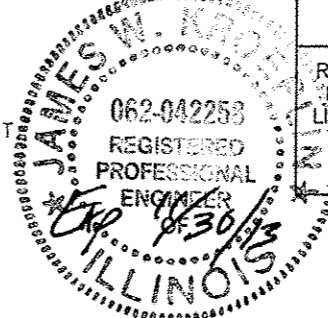
DATE
JAN. 18, 2013
PROJECT NO.
M0031-71-0102
SHEET NO.
1

McMAHON

ENGINEERS ARCHITECTS

1700 HUTCHINS ROAD, MACHESNEY PARK, IL 61115  
 Tel: (815) 636-9590 Fax: (815) 636-9591  
 www.mcmgrp.com

UTILITY LOCATIONS ARE PROVIDED FOR THE CONTRACTORS CONVENIENCE AND ARE BASED ON AVAILABLE INFORMATION. THE CONTRACTOR IS RESPONSIBLE FOR LOCATION AND PROTECTION OF UNDERGROUND UTILITIES. CONTACT J.U.L.I.E. 1-800-892-0123 FOR LOCATION OF UNDERGROUND UTILITIES.



JAMES W. KROEPF, P.E.  
 ILLINOIS REGISTERED PROFESSIONAL ENGINEER NO. 052-042258  
 DATE: 3/27/13

F.A. RITE	SECTION	COUNTY	TOTAL SHEETS	SHEET NO.
	10-00027-00-SW	WINNEBAGO	15	2
SRTS-4009(056)		ILLINOIS	CONTRACT NO. 85584	

**McMAHON**  
ENGINEERS ARCHITECTS  
170 HUTCHINS ROAD, MACHESNEY PARK, IL 61115  
Tel: (708) 349-1000  
www.mcmahon.com

McMahon provides this drawing and data, regardless of form, as is. It is the responsibility of the recipient to verify the accuracy of the information. The client and/or recipient shall hold McMahon harmless for any errors or omissions in the original drawing or data without prior written consent by McMahon.

NO.	DATE	REVISION
1	2/15/13	DOT CORRECTIONS
2	3/14/13	IDOT CORRECTIONS
3	4/08/13	IDOT CORRECTIONS

STATE OF ILLINOIS  
SAFE ROUTES TO SCHOOL SIDEWALK IMPROVEMENTS  
VILLAGE OF MACHESNEY PARK/CITY OF LOVES PARK

DESIGNED J.W.K.	DRAWN J.J.D.
SCALE NONE	
PROJECT NO. M0031-71-0102	
DATE JAN. 18, 2013	
SHEET NO.	

**SUMMARY OF QUANTITIES**  
**CONSTRUCTION TYPE CODE: 0021**

ITEM #	DESCRIPTION	UNIT	QUANTITY
20100110	TREE REMOVAL (6 TO 15 UNITS DIAMETER)	UNIT	12
20100500	TREE REMOVAL, ACRES	ACRE	0.03
20200100	EARTH EXCAVATION	CU YD	638
21101615	TOPSOIL FURNISH AND PLACE, 4"	SQ YD	2,420
25000100	SEEDING, CLASS 1	ACRE	0.5
25000400	NITROGEN FERTILIZER NUTRIENT	POUND	45
25000500	PHOSPHORUS FERTILIZER NUTRIENT	POUND	45
25000600	POTASSIUM FERTILIZER NUTRIENT	POUND	45
25100630	EROSION CONTROL BLANKET	SQ YD	2,420
28000510	INLET FILTERS	EACH	16
35101400	AGGREGATE BASE COURSE, TYPE B	TON	930
42300200	PORTLAND CEMENT CONCRETE DRIVEWAY PAVEMENT, 6 INCH	SQ YD	112
42400100	PORTLAND CEMENT CONCRETE SIDEWALK 4 INCH	SQ FT	18,989
42400800	DETECTABLE WARNINGS	SQ FT	267
44000200	DRIVEWAY PAVEMENT REMOVAL	SQ YD	418
44000600	SIDEWALK REMOVAL	SQ FT	5,744
44213200	SAW CUTS	FOOT	47
67100100	MOBILIZATION	L SUM	1
* 78000400	THERMOPLASTIC PAVEMENT MARKING - LINE 6"	FOOT	173
* 78000600	THERMOPLASTIC PAVEMENT MARKING - LINE 12"	FOOT	93
* 78005130	EPOXY PAVEMENT MARKING - LINE 6"	FOOT	143
* 78005150	EPOXY PAVEMENT MARKING - LINE 12"	FOOT	142
X7010216	TRAFFIC CONTROL AND PROTECTION, (SPECIAL)	L SUM	1
Z0004510	HOT-MIX ASPHALT DRIVEWAY PAVEMENT, 3"	SQ YD	235
* <b>XX008872</b>	<b>SOLAR POWERED PEDESTRIAN CROSSING SIGNAL SYSTEM COMPLETE</b>	EACH	2

\* SPECIALTY ITEMS

# GENERAL NOTES

1. All earthwork, roadway work, drainage work or storm sewer work shall be performed utilizing material and methods in strict accordance with the Illinois Department of Transportation (IDOT) "Standard Specifications for Road and Bridge Construction" latest edition, the standard detail sheets attached to these plans, and the specifications for these plans. Where there is a conflict, the standard detail sheets shall govern. All State, Municipal Agencies, and Public Works Department requirements and standards shall be strictly adhered to in work performed under this project.
2. The proposed improvements must be constructed in accordance with the engineering plans as approved by the Village of Machesney Park, the City of Loves Park, IDOT, and Winnebago County. The construction details as presented on these plans must be followed by the CONTRACTOR. Improvement representations as shown on these plans are as accurate as possible from the information available, however field revisions may be required to accommodate unforeseen circumstances - the ENGINEER shall be appraised of any necessary revisions with sufficient lead time allowed to properly consider and act upon said requests.
3. The utility locations, depths, etc., shown on these plans are approximate only, and shall be verified by the CONTRACTOR with all affected utility companies prior to initiating construction operations; the ENGINEER and OWNER assume no responsibility for the adequacy, sufficiency or exactness of these utility representations.
4. As part of the bidding procedure, the CONTRACTOR shall verify that the quantities for any items as presented in these plan documents are substantially correct; if discrepancies are detected, the CONTRACTOR shall notify the ENGINEER of the discrepancy a minimum of 48 hours prior to the bid date.
5. The CONTRACTOR shall indemnify the ENGINEER, the Village of Machesney Park, the City of Loves Park, Winnebago County, their agents, etc. from any and all liability with respect to the construction, installation and testing of the work required on this project. It shall be the sole responsibility of the CONTRACTOR to perform the work of this contract in a manner which strictly complies with any and all pertinent local, state or national construction and safety codes; the ENGINEER, OWNER, Village, City, and County are not responsible for ensuring compliance by the CONTRACTOR with said codes, and assume no liability for accidents, injuries, deaths, etc. or claims relating thereto which may result from lack of adherence to said codes. CONTRACTOR shall carry liability insurance naming the Village of Machesney Park, the City of Loves Park, Winnebago County, and ENGINEER as additional insured. Limits of liability shall be as outlined in the specifications for this project.
6. Prior to starting construction, the CONTRACTOR shall contact the office of J.U.L.I.E. at 800-892-0123 for exact field location of all utilities in the proximity of, and on, the project site; if there are any utilities which are not members of the J.U.L.I.E. system, the CONTRACTOR shall be solely responsible for determining this and requesting said utilities to field verify and mark pertinent utility locations.
7. CONTRACTOR shall notify the ENGINEER, Village of Machesney Park, the City of Loves Park, and Winnebago County at least 48-hours prior to start of construction in order to arrange for appropriate construction observation. Work performed or materials and equipment installed without observation may be considered unacceptable at the discretion of the ENGINEER, Village of Machesney Park, City of Loves Park, or Winnebago County, and may have to be replaced at no cost to the ENGINEER or OWNER.
8. Existing pavements, curbs, gutters, sidewalks, etc. to be removed under this contract shall be saw cut full depth or removed at a joint.
9. Should it be determined by the ENGINEER that the subgrade material is unsuitable on which to construct the roadway structure, the CONTRACTOR shall be responsible for removing the unsuitable material to the satisfaction of the ENGINEER and replacing same with stabilizing subbase consisting of coarse aggregate. CONTRACTOR will be paid according to unit price included in bid forms.
10. ENGINEER approved trench back fill materials as described in the specifications are required to be placed in utility trenches within the limits of pavement and 2-feet beyond the pavement. Cost of said backfill is considered incidental to the cost of the pertinent utility unless a specific pay item for the trench backfill is listed in the plans.
11. Extreme caution must be exercised regarding the compaction of all utility trenches, due to the existence of asbestos cement water mains in the area.
12. CONTRACTORS are advised that all mud and debris must be cleared from roadways at the end of each working day per requirements of the Village of Machesney Park, the City of Loves Park, and Winnebago County.
13. All valve boxes, vaults, structures, manholes or other frames requiring such attention shall be adjusted to final grades as determined acceptable by the ENGINEER. The maximum adjustment for any utility structure with adjusting rings is 8-inches, unless otherwise approved by the ENGINEER and the utility OWNER; any adjustment over 8-inches must incorporate additional barrel sections for the manhole, valve vault, etc.
14. The CONTRACTOR will be paid for materials and equipment successfully installed in accordance with the plans and specifications as measured or verified in place by the ENGINEER or his agent.
15. Any damage to existing valves, manholes, structures, utilities, sidewalks, curbs, gutters, pavements, etc. not called out specifically in the plans shall be repaired or replaced with equals without cost to the contract.
16. Restoration of existing roadways, right-of-way or private property are considered incidental to this project where not specifically called out on the plans. Any area for which restoration is required shall receive 4" minimum of approved topsoil, seeding, and mulch, or sod.

F.A. RTE	SECTION	COUNTY	TOTAL SHEETS	SHEET NO.
	10-00027-00-SW	WINNEBAGO	15	3
SRTS-4009(056)		ILLINOIS	CONTRACT NO. 85584	

**McMAHON**  
**ENGINEERS ARCHITECTS**  
 1100 N. WASHINGTON ST. SUITE 101  
 WINNEBAGO, IL 60093  
 TEL: (815) 885-8800 FAX: (815) 885-8801  
 WWW.MCMAHON.COM

McMahon provides this drawing and instruments of service. All rights including copyright are retained by McMahon. No part of this drawing or instruments of service may be reproduced, stored in a retrieval system, or transmitted in any form or by any means, electronic, mechanical, photocopying, recording, or by any information storage and retrieval system, without the prior written consent by McMahon.

NO.	DATE	REVISION
1	2/15/13	IDOT CORRECTIONS
2	3/14/13	IDOT CORRECTIONS
3	4/08/13	IDOT CORRECTIONS

**STATE OF ILLINOIS**  
**SAFE ROUTES TO SCHOOL SIDEWALK IMPROVEMENTS**  
**VILLAGE OF MACHESNEY PARK/CITY OF LOVES PARK**

DESIGNED J.W.K.	DRAWN J.J.D.
SCALE 1" = 5'	
PROJECT NO. M0031-71-0102	
DATE JAN. 18, 2013	
SHEET NO. <b>3</b>	

F.A. RTE	SECTION	COUNTY	TOTAL SHEETS	SHEET NO.
	10-00027-00-SW	WINNEBAGO	15	4
SRTS-4009(056) ILLINOIS		CONTRACT NO. 85584		

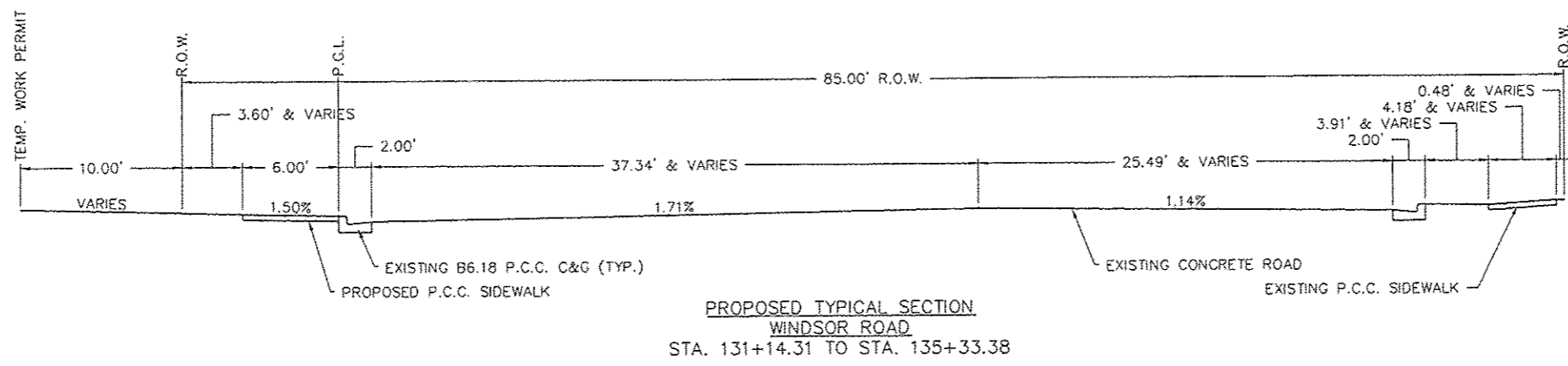
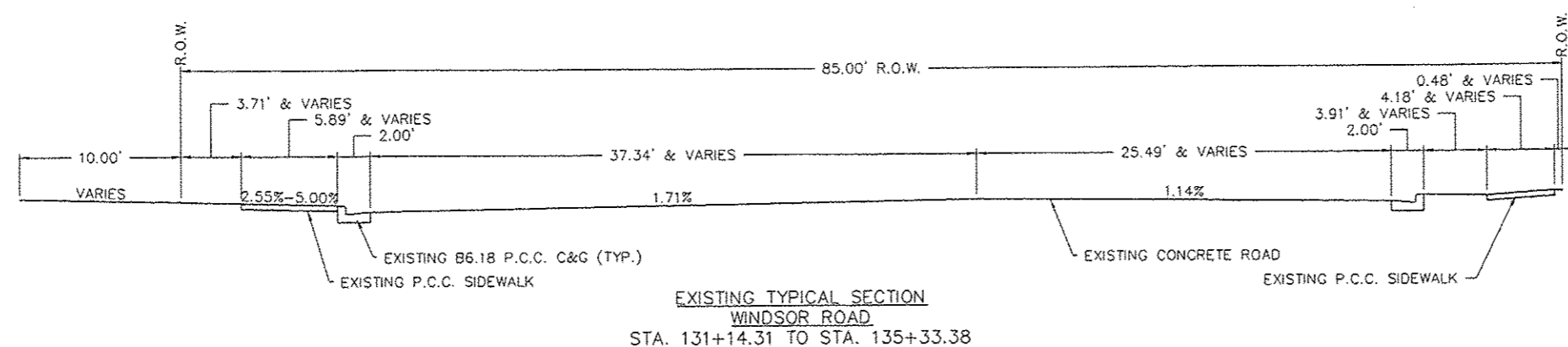
**McMAHON**  
**ENGINEERS ARCHITECTS**  
 1100 HUTCHINS ROAD, SUITE 200, BURLINGTON, ILLINOIS 61714  
 TEL: (312) 339-8600  
 WWW.MCMAP.COM

McMahon provides this drawing and data, regardless of form, as advisory only. It is not to be used for construction or for any other purpose without the written consent of McMahon. The client and/or recipient agrees to hold McMahon harmless for any errors or omissions, and to indemnify McMahon from and against all claims, damages, costs and expenses, including reasonable attorney's fees, arising out of or from the use of this drawing and data without prior written consent by McMahon.

NO.	DATE	REVISION
1	2/15/13	DOT CORRECTIONS
2	3/14/13	DOT CORRECTIONS
3	4/08/13	DOT CORRECTIONS

STATE OF ILLINOIS  
 SAFE ROUTES TO SCHOOL SIDEWALK IMPROVEMENTS  
 VILLAGE OF MACHESNEY PARK/CITY OF LOVES PARK

DESIGNED J.W.K.	DRAWN J.J.D.
SCALE 1 : 5	
PROJECT NO. M0031-71-0102	
DATE JAN. 18, 2013	
SHEET NO. <b>4</b>	



F.A. RTE.	SECTION	COUNTY	TOTAL SHEETS	SHEET NO.
10-00027-00-SW	WINNEBAGO	15	5	
SRTS-4009(056) ILLINOIS		CONTRACT NO. 85584		

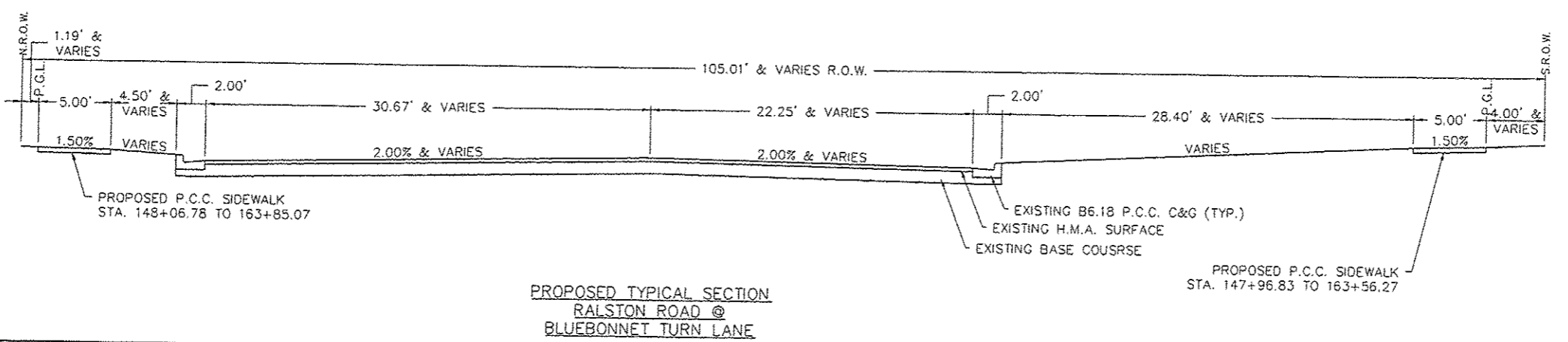
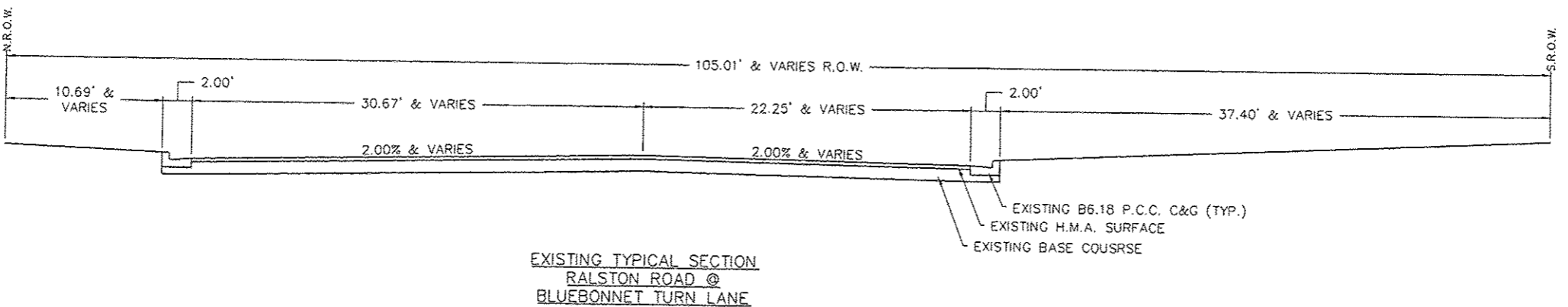
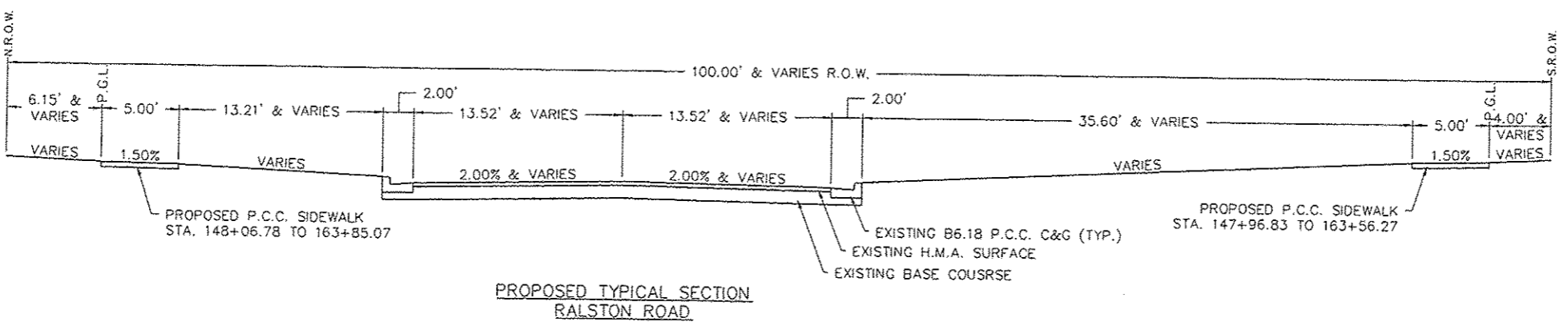
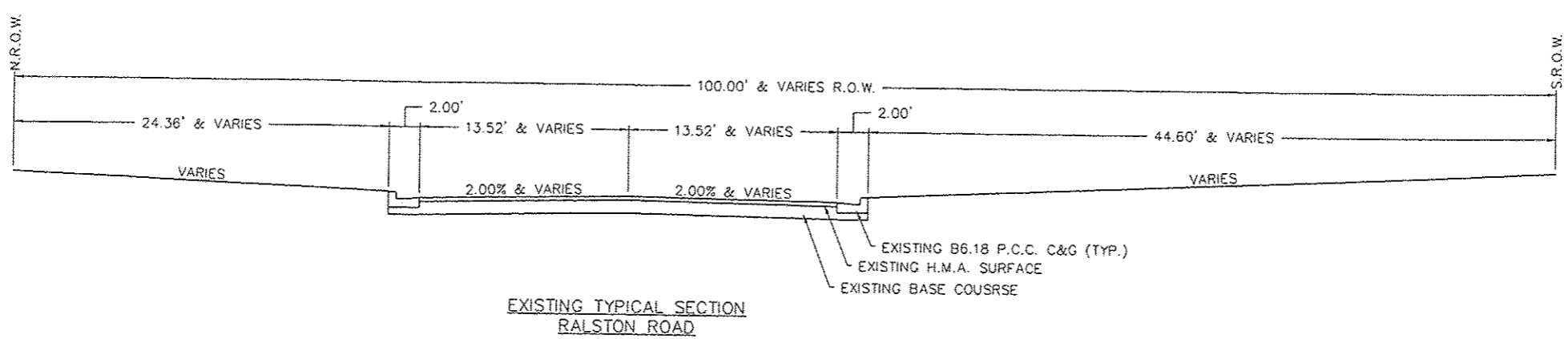
**McMAHON**  
**ENGINEERS ARCHITECTS**  
 1708 E. COOK ST. SUITE 200  
 DEERFIELD, ILL. 60015  
 TEL: (815) 850-8200 FAX: (815) 850-8201  
 www.mahon.com

McMahon provides this drawing and data, reports of boring and instruments of service. All rights in drawings and reports are retained by McMahon. No part of this drawing or report may be reproduced or transmitted in any form or by any means, electronic or mechanical, including photocopying, recording, or by any information storage and retrieval system, without the prior written consent of McMahon.

NO.	DATE	DESCRIPTION
1	2/15/13	IDOT CORRECTIONS
2	3/14/13	IDOT CORRECTIONS
3	4/08/13	IDOT CORRECTIONS

STATE OF ILLINOIS  
 SAFE ROUTES TO SCHOOL SIDEWALK IMPROVEMENTS  
 VILLAGE OF MACHESNEY PARK/CITY OF LOVES PARK

DESIGNED J.W.K.	DRAWN J.J.D.
SCALE 1 : 5	
PROJECT NO. M0031-71-0102	
DATE JAN. 18, 2013	
SHEET NO.	



F.A. RTE	SECTION	COUNTY	TOTAL SHEETS	SHEET NO.
	10-00027-00-SW	WINNEBAGO	15	6
SRTS-4009(056) ILLINOIS		CONTRACT NO. 85584		

**McMAHON**  
ENGINEERS ARCHITECTS  
1100 N. WASHINGTON ST. SUITE 200  
MADISON, IL 62602  
(618) 266-5000 FAX (618) 266-5001  
www.mcmahon.com

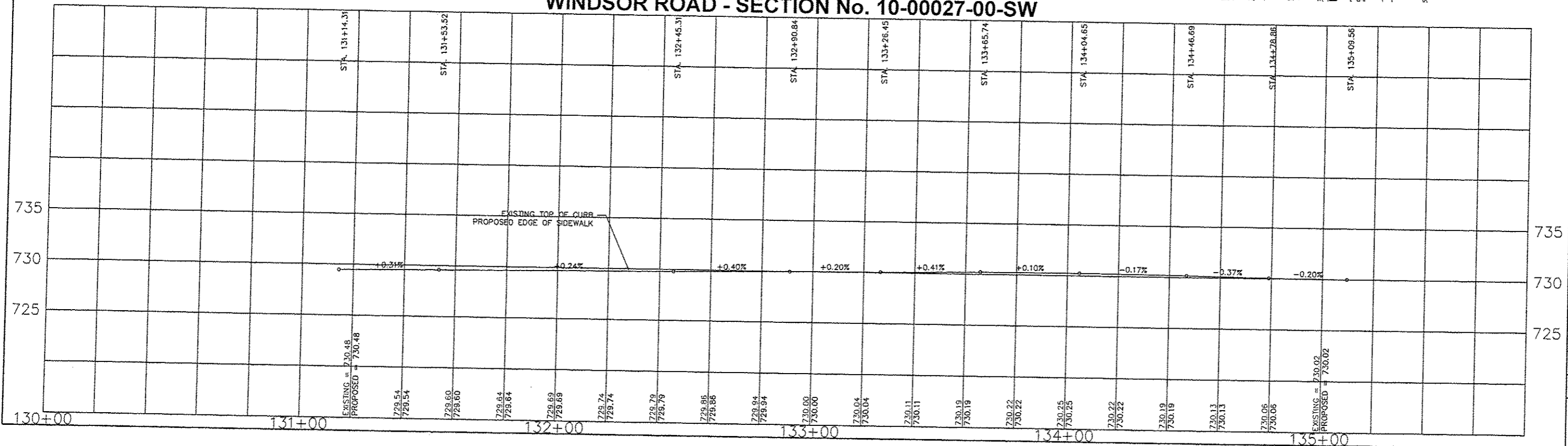
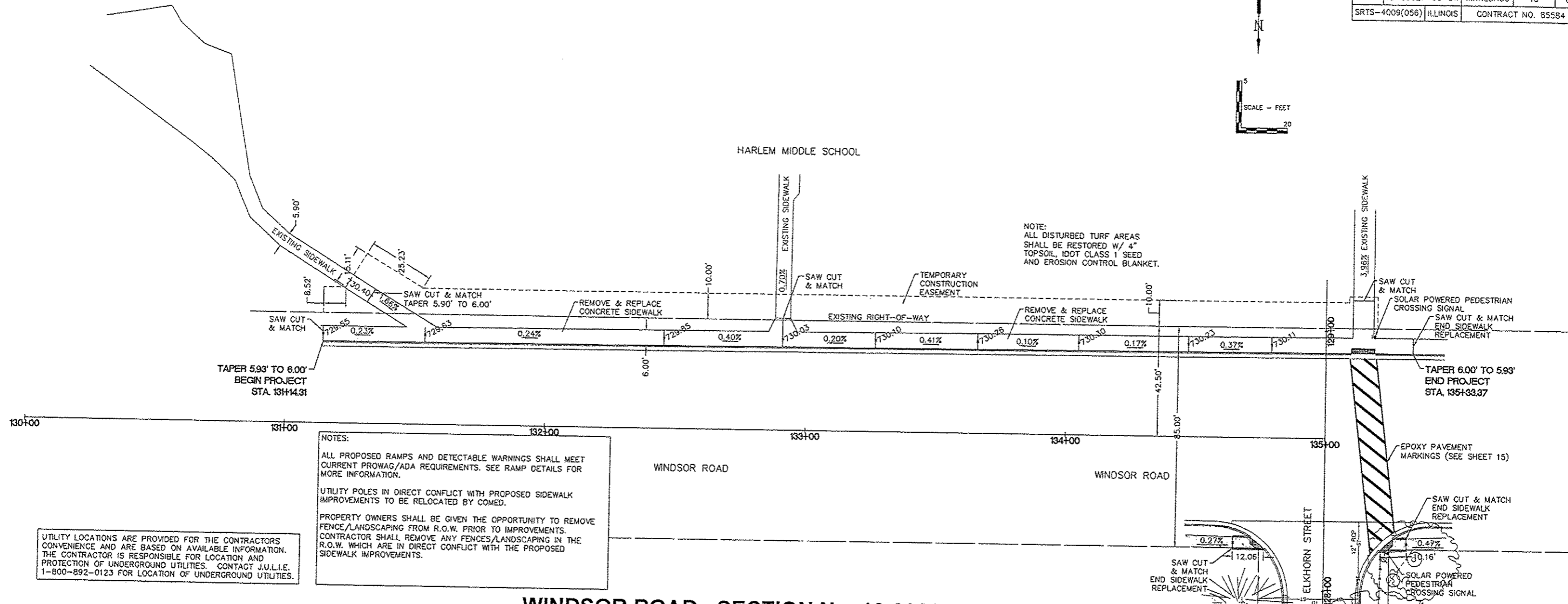
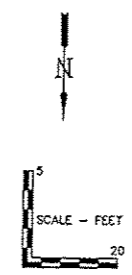
McMahon provides the drawing and data regardless of the drawing and data's purpose of use. All rights in the drawing and data are reserved by McMahon. No part of this drawing and data may be reproduced, stored in a retrieval system, or transmitted in any form or by any means, electronic, mechanical, photocopying, recording, or by any information storage and retrieval system, without the prior written consent of McMahon.

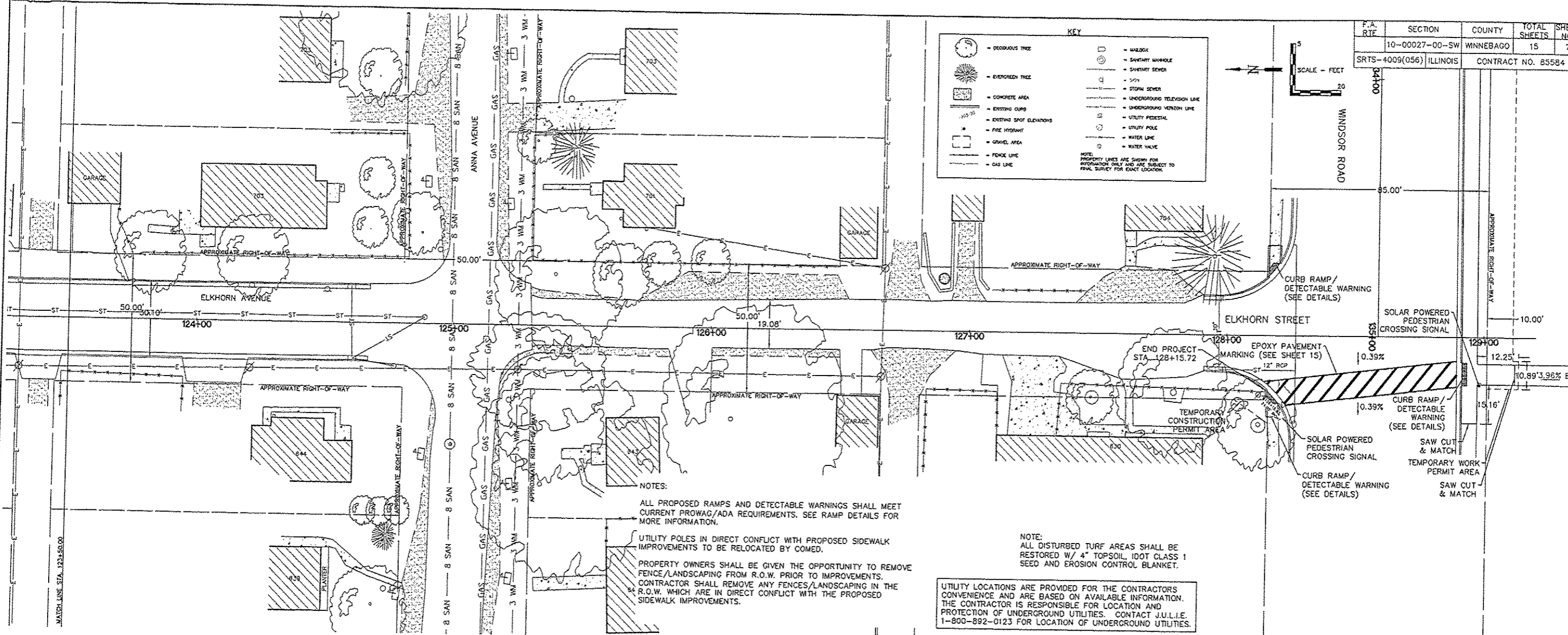
NO.	DATE	REVISION
1	2/15/13	IDOT CORRECTIONS
2	3/14/13	IDOT CORRECTIONS
3	4/08/13	IDOT CORRECTIONS

STATE OF ILLINOIS  
SAFE ROUTES TO SCHOOL SIDEWALK IMPROVEMENTS  
VILLAGE OF MACHESNEY PARK/CITY OF LOVES PARK

DESIGNED	J.W.K.	DRAWN	J.J.D.
SCALE		HORIZ. 1" = 20'	
VERT. 1" = 5'		PROJECT NO.	
M0031-71-0102		DATE	
JAN. 18, 2013		SHEET NO.	

6

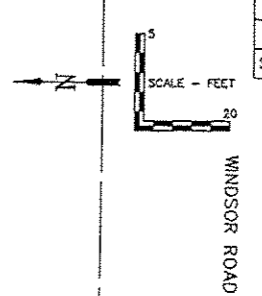




**KEY**

- DECIDUOUS TREE
- EVERGREEN TREE
- CONCRETE AREA
- EXISTING CURB
- EXISTING SPOT ELEVATIONS
- PAVE HIGHWAY
- GRAVEL AREA
- FENCE LINE
- GAS LINE
- WALKWAY
- SANITARY MANHOLE
- SANITARY SEWER
- 1/2" S
- STORM SEWER
- UNDERGROUND TELEPHONE LINE
- UNDERGROUND TELEVISION LINE
- UTILITY PEDESTAL
- UTILITY POLE
- WATER LINE
- WATER VALVE

NOTE: PROPERTY LINES ARE SHOWN FOR INFORMATION ONLY AND ARE SUBJECT TO FINAL SURVEY FOR EXACT LOCATION.



F.A. RITE	SECTION	COUNTY	TOTAL SHEETS	SHEET NO.
10-00027-00-SW	ILLINOIS	WINNEBAGO	15	7
SRTS-4009(056)		CONTRACT NO. 85584		

**McMAHON**  
ENGINEERS ARCHITECTS

1100 S. WINDSOR ROAD  
WINNEBAGO, ILLINOIS 61081  
TEL: (815) 232-0200 FAX: (815) 232-0201

McMahon reserves the drawing and design of this project. All rights in this drawing are reserved by McMahon. No part of this drawing may be reproduced, stored in a retrieval system, or transmitted in any form or by any means, electronic, mechanical, photocopying, recording, or by any information storage and retrieval system, without the prior written consent of McMahon.

NO.	DATE	REVISION
1	2/15/13	IDOT CORRECTIONS
2	3/14/13	IDOT CORRECTIONS
3	4/08/13	IDOT CORRECTIONS

**NOTES:**

ALL PROPOSED RAMPS AND DETECTABLE WARNINGS SHALL MEET CURRENT PROWAG/ADA REQUIREMENTS. SEE RAMP DETAILS FOR MORE INFORMATION.

UTILITY POLES IN DIRECT CONFLICT WITH PROPOSED SIDEWALK IMPROVEMENTS TO BE RELOCATED BY COMED.

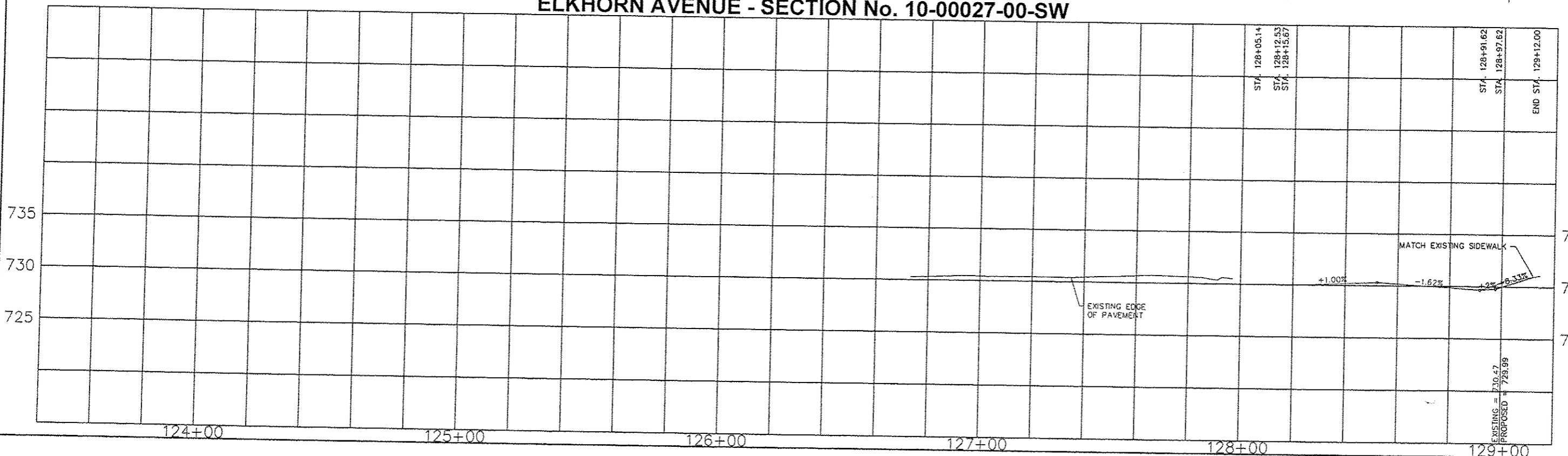
PROPERTY OWNERS SHALL BE GIVEN THE OPPORTUNITY TO REMOVE FENCE/LANDSCAPING FROM R.O.W. PRIOR TO IMPROVEMENTS. CONTRACTOR SHALL REMOVE ANY FENCES/LANDSCAPING IN THE R.O.W. WHICH ARE IN DIRECT CONFLICT WITH THE PROPOSED SIDEWALK IMPROVEMENTS.

**NOTE:**

ALL DISTURBED TURF AREAS SHALL BE RESTORED W/ 4" TOPSOIL, IDOT CLASS 1 SEED AND EROSION CONTROL BLANKET.

UTILITY LOCATIONS ARE PROVIDED FOR THE CONTRACTORS CONVENIENCE AND ARE BASED ON AVAILABLE INFORMATION. THE CONTRACTOR IS RESPONSIBLE FOR LOCATION AND PROTECTION OF UNDERGROUND UTILITIES. CONTACT J.U.L.I.E. 1-800-892-0123 FOR LOCATION OF UNDERGROUND UTILITIES.

**ELKHORN AVENUE - SECTION No. 10-00027-00-SW**



STATE OF ILLINOIS  
SAFE ROUTES TO SCHOOL SIDEWALK IMPROVEMENTS  
VILLAGE OF MACHESNEY PARK/CITY OF LOVES PARK

DESIGNED	DRAWN
J.W.K.	J.J.D.
SCALE	
HORIZ. 1" = 20'	
VERT. 1" = 5'	
PROJECT NO.	
MOO31-71-0102	
DATE	
JAN. 18, 2013	
SHEET NO.	

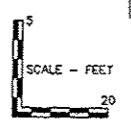
F.A. RT#	SECTION	COUNTY	TOTAL SHEETS	SHEET NO.
10-00027-00-SW	WINNEBAGO	15	8	
SRTS-4009(056) ILLINOIS		CONTRACT NO. 85584		

**McMAHON**  
ENGINEERS ARCHITECTS  
1700 HITCHCOCK ROAD, MACHESNEY PARK, IL 61115  
Tel: (815) 636-9550 Fax: (815) 636-9551  
www.mcmahon.com

**KEY**

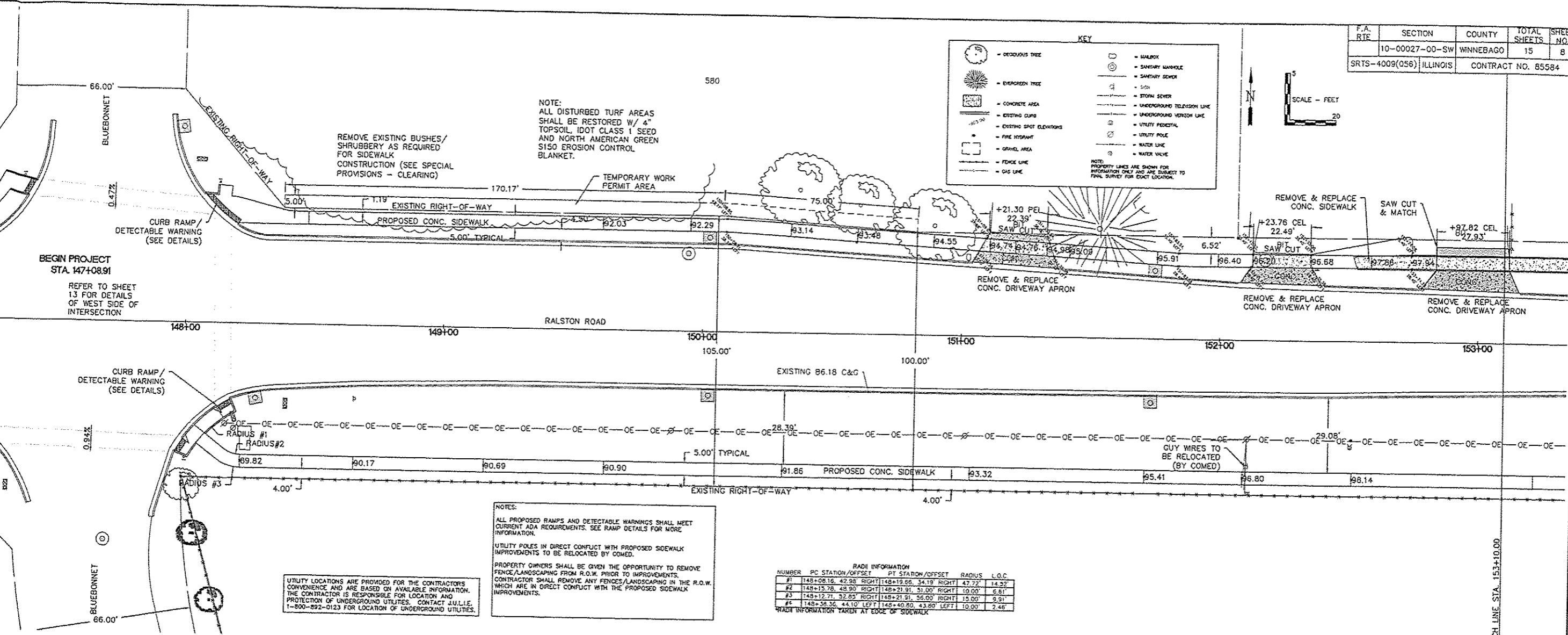
- DECIDUOUS TREE
- EVERGREEN TREE
- CONCRETE AREA
- EXISTING CURB
- EXISTING SPOT ELEVATIONS
- FIRE HYDRANT
- GRAVEL AREA
- FENCE LINE
- GAS LINE
- MANHOLE
- SANITARY MANHOLE
- SANITARY SEWER
- SEWER
- STORM SEWER
- UNDERGROUND TELEVISION LINE
- UNDERGROUND VERIZON LINE
- UTILITY PEDESTAL
- UTILITY POLE
- WATER LINE
- WATER VALVE

NOTE: PROPERTY LINES ARE SHOWN FOR INFORMATION ONLY AND ARE SUBJECT TO FINAL SURVEY FOR EXACT LOCATION.



NOTE:  
ALL DISTURBED TURF AREAS SHALL BE RESTORED W/ 4" TOPSOIL, IDOT CLASS 1 SEED AND NORTH AMERICAN GREEN SISO EROSION CONTROL BLANKET.

REMOVE EXISTING BUSHES/ SHRUBBERY AS REQUIRED FOR SIDEWALK CONSTRUCTION (SEE SPECIAL PROVISIONS - CLEARING)

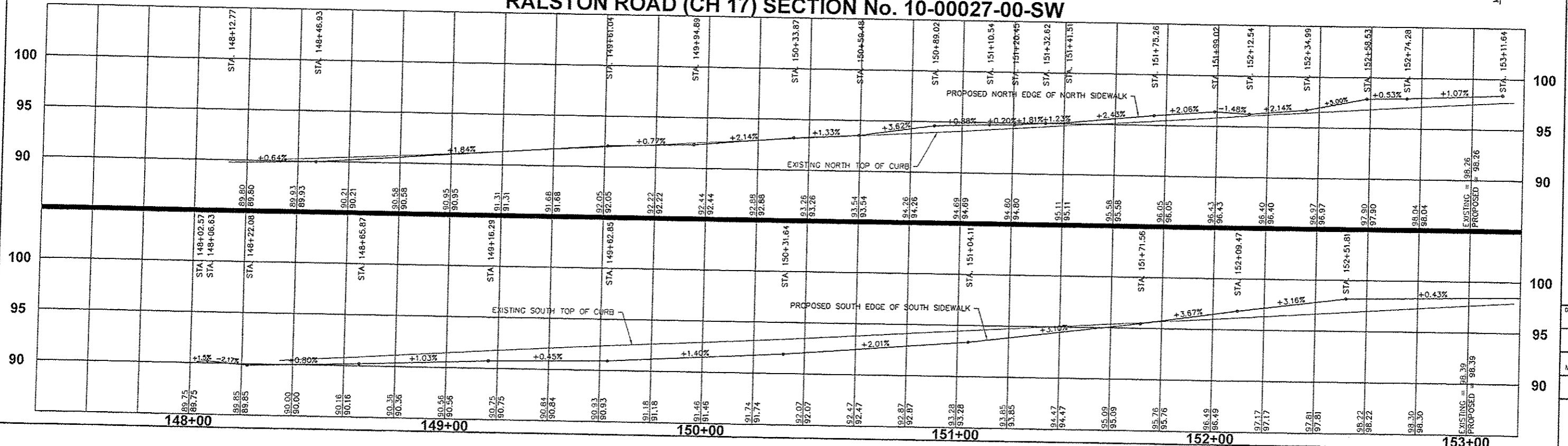


**RADI INFORMATION**

NUMBER	PC STATION/OFFSET	PT STATION/OFFSET	RADIUS	L.O.C.
#1	148+08.18, 42.50' RIGHT	148+19.66, 34.19' RIGHT	43.22'	14.32'
#2	148+15.78, 48.90' RIGHT	148+21.91, 51.00' RIGHT	10.00'	6.81'
#3	148+12.71, 52.85' RIGHT	148+21.91, 56.00' RIGHT	15.00'	9.31'
#4	148+38.36, 44.10' LEFT	148+40.80, 43.80' LEFT	10.00'	2.48'

\*RADI INFORMATION TAKEN AT EDGE OF SIDEWALK

**RALSTON ROAD (CH 17) SECTION No. 10-00027-00-SW**



STATE OF ILLINOIS  
SAFE ROUTES TO SCHOOL SIDEWALK IMPROVEMENTS  
VILLAGE OF MACHESNEY PARK/CITY OF LOVES PARK

DESIGNED J.W.K.	DRAWN J.J.D.
SCALE HORIZ. 1" = 20' VERT. 1" = 4'	
PROJECT NO. M0031-71-0102	
DATE JAN. 18, 2013	
SHEET NO. 8	



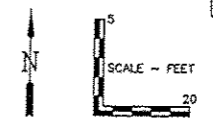
P.A. RTE	SECTION	COUNTY	TOTAL SHEETS	SHEET NO.
10-00027-00-SW	10-00027-00-SW	WINNEBAGO	15	9
SRTS-4009(056) ILLINOIS		CONTRACT NO. 85584		

**McMAHON**  
ENGINEERS ARCHITECTS  
1100 W. CHERRY ROAD, MACHESNEY PARK, IL 61115  
Tel: (815) 486-1100 Fax: (815) 486-1101  
www.mcmahon.com

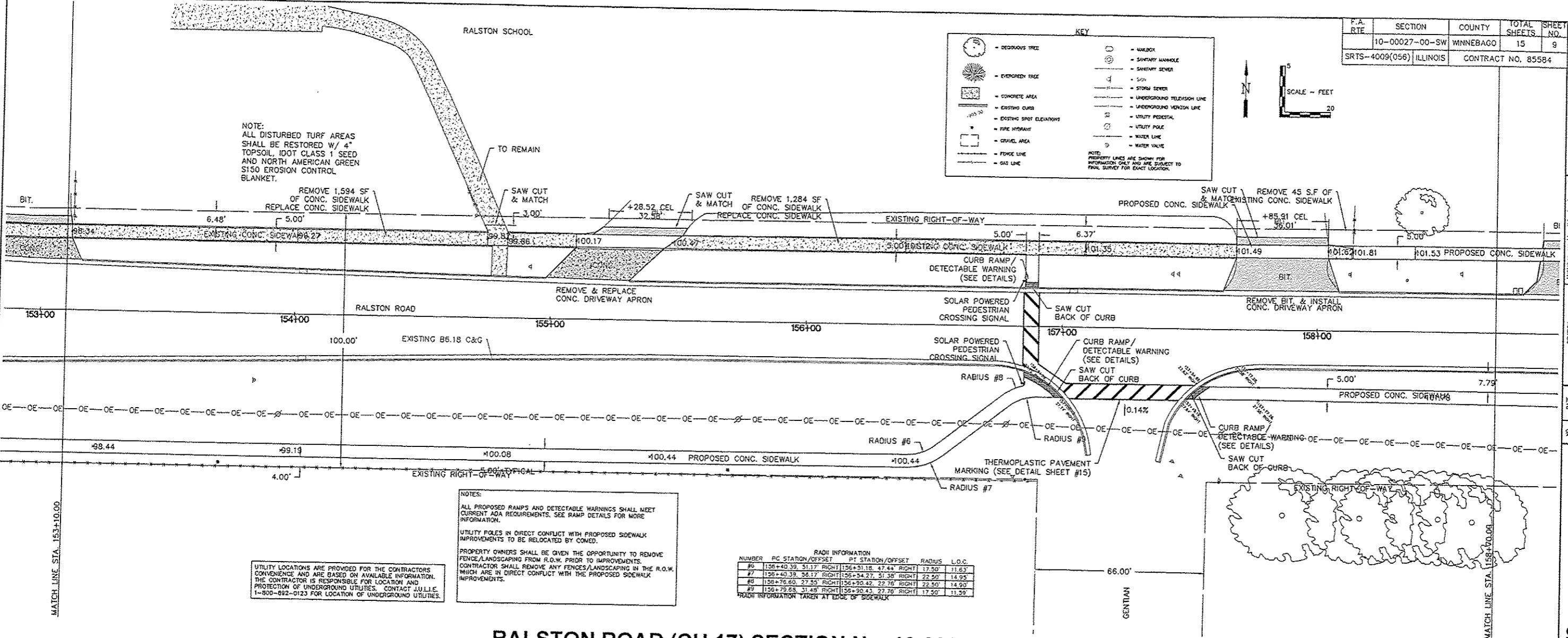
**KEY**

- DECIDUOUS TREE
- EVERGREEN TREE
- CONCRETE CURB
- EXISTING CURB
- EXISTING SPOT ELEVATIONS
- FIRE HYDRANT
- GRAVEL AREA
- FENCE LINE
- GAS LINE
- MANHOLE
- SAFETY MANHOLE
- SAFETY SEWER
- 5/8"
- STORM SEWER
- UNDERGROUND TELEVISION LINE
- UNDERGROUND WIRELESS LINE
- UTILITY PEDESTAL
- UTILITY POLE
- WATER LINE
- WATER VALVE

NOTE: PROPERTY LINES ARE SHOWN FOR INFORMATION ONLY AND ARE SUBJECT TO FINAL SURVEY FOR EXACT LOCATION.



NOTE:  
ALL DISTURBED TURF AREAS SHALL BE RESTORED W/ 4" TOPSOIL, IDOT CLASS 1 SEED AND NORTH AMERICAN GREEN S150 EROSION CONTROL BLANKET.



**NOTES:**  
ALL PROPOSED RAMPS AND DETECTABLE WARNINGS SHALL MEET CURRENT ADA REQUIREMENTS. SEE RAMP DETAILS FOR MORE INFORMATION.  
UTILITY POLES IN DIRECT CONFLICT WITH PROPOSED SIDEWALK IMPROVEMENTS TO BE RELOCATED BY COMED.  
PROPERTY OWNERS SHALL BE GIVEN THE OPPORTUNITY TO REMOVE FENCE/LANDSCAPING FROM R.O.W. PRIOR TO IMPROVEMENTS.  
CONTRACTOR SHALL REMOVE ANY FENCES/LANDSCAPING IN THE R.O.W. WHICH ARE IN DIRECT CONFLICT WITH THE PROPOSED SIDEWALK IMPROVEMENTS.

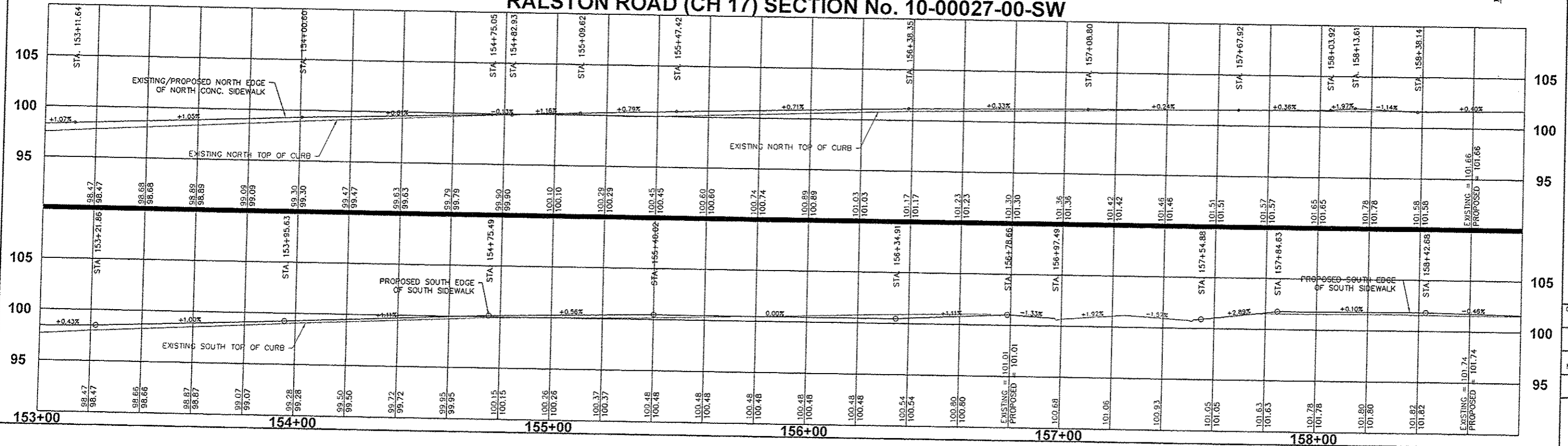
UTILITY LOCATIONS ARE PROVIDED FOR THE CONTRACTORS CONVENIENCE AND ARE BASED ON AVAILABLE INFORMATION. THE CONTRACTOR IS RESPONSIBLE FOR LOCATION AND PROTECTION OF UNDERGROUND UTILITIES. CONTACT JULLIE, 1-800-692-0123 FOR LOCATION OF UNDERGROUND UTILITIES.

**RADIUS INFORMATION**

NUMBER	PC STATION/OFFSET	PT STATION/OFFSET	RADIUS	L.O.C.
#6	156+40.39 31.17' RIGHT	156+51.18 47.44' RIGHT	17.50'	11.83'
#7	156+40.39 38.17' RIGHT	156+54.27 31.38' RIGHT	22.90'	14.95'
#8	158+76.80 27.55' RIGHT	158+90.42 22.76' RIGHT	22.50'	14.90'
#9	156+79.88 31.48' RIGHT	156+90.43 27.76' RIGHT	17.50'	11.30'

ROUND INFORMATION TAKEN AT EDGE OF SIDEWALK

**RALSTON ROAD (CH 17) SECTION No. 10-00027-00-SW**



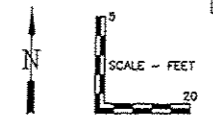
STATE OF ILLINOIS  
SAFE ROUTES TO SCHOOL SIDEWALK IMPROVEMENTS  
VILLAGE OF MACHESNEY PARK/CITY OF LOVES PARK

DESIGNED J.W.K.	DRAWN J.J.D.
SCALE HORIZ. 1" = 20' VERT. 1" = 5'	
PROJECT NO. MOQ31-71-0102	
DATE JAN. 18, 2013	
SHEET NO. 9	

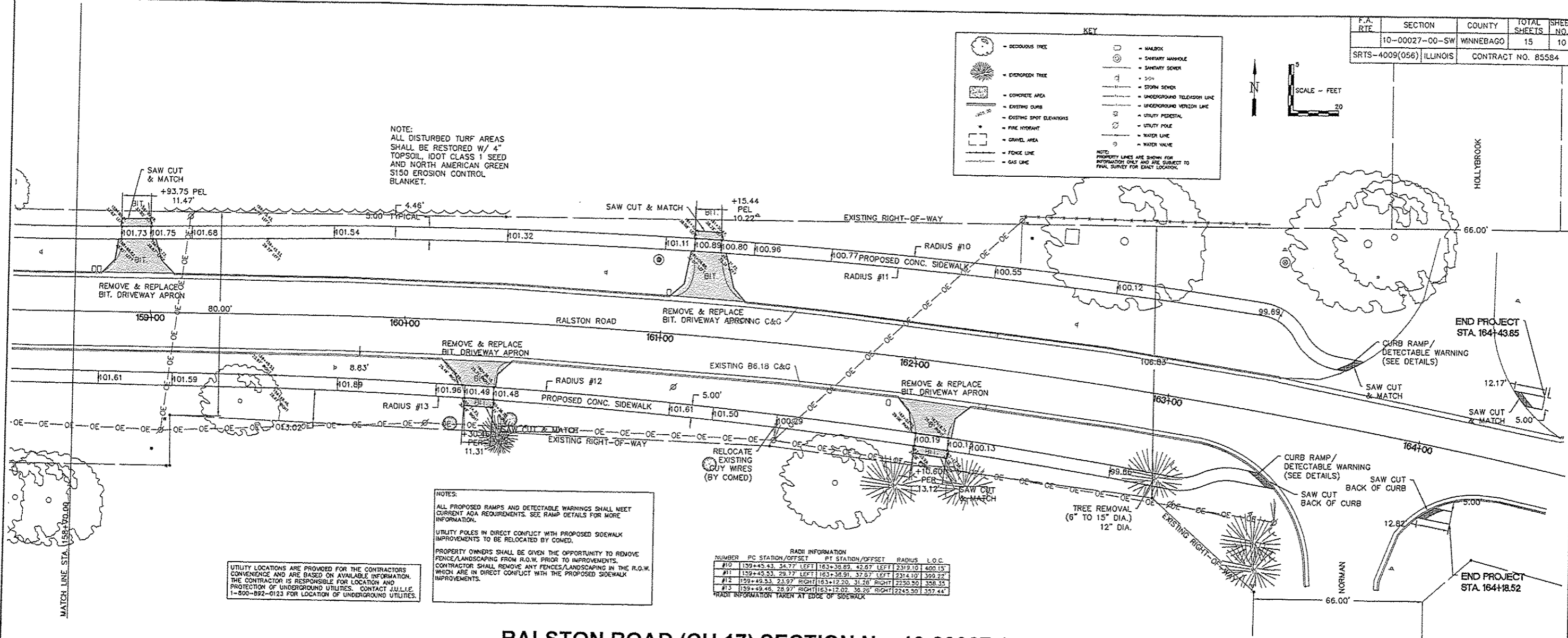
**KEY**

- DECIDUOUS TREE
- EVERGREEN TREE
- CONCRETE AREA
- EXISTING CURB
- EXISTING SPOT ELEVATIONS
- PAVE HYDRANT
- GRAVEL AREA
- FENCE LINE
- GAS LINE
- WALKWAY
- SEWER MANHOLE
- SEWER COVER
- STORM SEWER
- UNDERGROUND TELEVISION LINE
- UNDERGROUND TELEPHONE LINE
- UTILITY PEDestal
- UTILITY POLE
- WATER LINE
- WATER VALVE

NOTE: PROPERTY LINES ARE SHOWN FOR INFORMATION ONLY AND ARE SUBJECT TO FINAL SURVEY FOR EXACT LOCATION.



NOTE:  
ALL DISTURBED TURF AREAS SHALL BE RESTORED W/ 4" TOPSOIL, IDOT CLASS 1 SEED AND NORTH AMERICAN GREEN S150 EROSION CONTROL BLANKET.



NOTES:  
ALL PROPOSED RAMPS AND DETECTABLE WARNINGS SHALL MEET CURRENT ADA REQUIREMENTS. SEE RAMP DETAILS FOR MORE INFORMATION.  
UTILITY POLES IN DIRECT CONFLICT WITH PROPOSED SIDEWALK IMPROVEMENTS TO BE RELOCATED BY COMED.  
PROPERTY OWNERS SHALL BE GIVEN THE OPPORTUNITY TO REMOVE FENCE/LANDSCAPING FROM R.O.W. PRIOR TO IMPROVEMENTS.  
CONTRACTOR SHALL REMOVE ANY FENCES/LANDSCAPING IN THE R.O.W. WHICH ARE IN DIRECT CONFLICT WITH THE PROPOSED SIDEWALK IMPROVEMENTS.

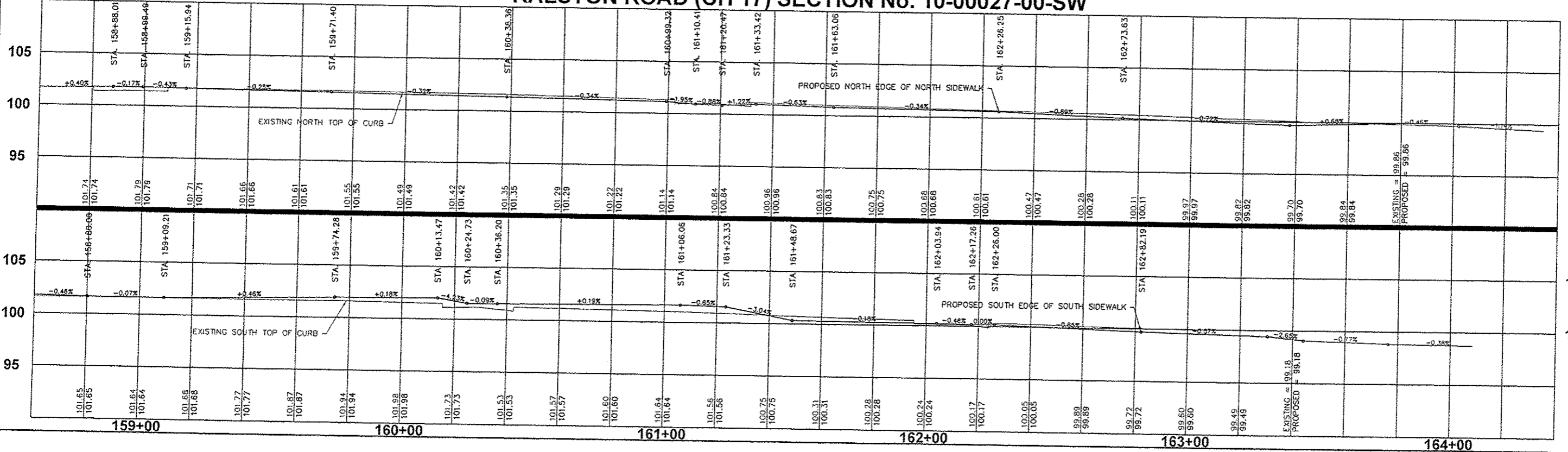
UTILITY LOCATIONS ARE PROVIDED FOR THE CONTRACTOR'S CONVENIENCE AND ARE BASED ON AVAILABLE INFORMATION. THE CONTRACTOR IS RESPONSIBLE FOR LOCATION AND PROTECTION OF UNDERGROUND UTILITIES. CONTACT JULLIE PEREIRA 1-800-892-0123 FOR LOCATION OF UNDERGROUND UTILITIES.

RADI INFORMATION

NUMBER	PC STATION/OFFSET	PT STATION/OFFSET	RADIUS	L.O.C.
#10	159+45.43 34.77' LEFT	163+38.89 42.67' LEFT	2319.10	400.15'
#11	159+45.53 28.77' LEFT	163+38.91 37.67' LEFT	2314.10'	399.22'
#12	159+49.53 23.97' RIGHT	163+12.20 31.26' RIGHT	2250.30	358.35'
#13	159+49.46 28.97' RIGHT	163+12.02 36.26' RIGHT	2245.30	357.44'

RADI INFORMATION TAKEN AT EDGE OF SIDEWALK

**RALSTON ROAD (CH 17) SECTION No. 10-00027-00-SW**



STATE OF ILLINOIS  
SAFE ROUTES TO SCHOOL SIDEWALK IMPROVEMENTS  
VILLAGE OF MACHESNEY PARK/CITY OF LOVES PARK

DESIGNED J.W.K.	DRAWN J.J.D.
SCALE HORIZ. 1" = 20' VERT. 1" = 5'	
PROJECT NO. M0031-71-0102	
DATE JAN. 18, 2013	
SHEET NO. <b>10</b>	

# CROSS SECTIONS SECTION No. 10-00027-00-SW

F.A. RTF	SECTION	COUNTY	TOTAL SHEETS	SHEET NO.
	10-00027-00-SW	WINNEBAGO	15	11
SRTS--4009(056) ILLINOIS		CONTRACT NO. 85584		

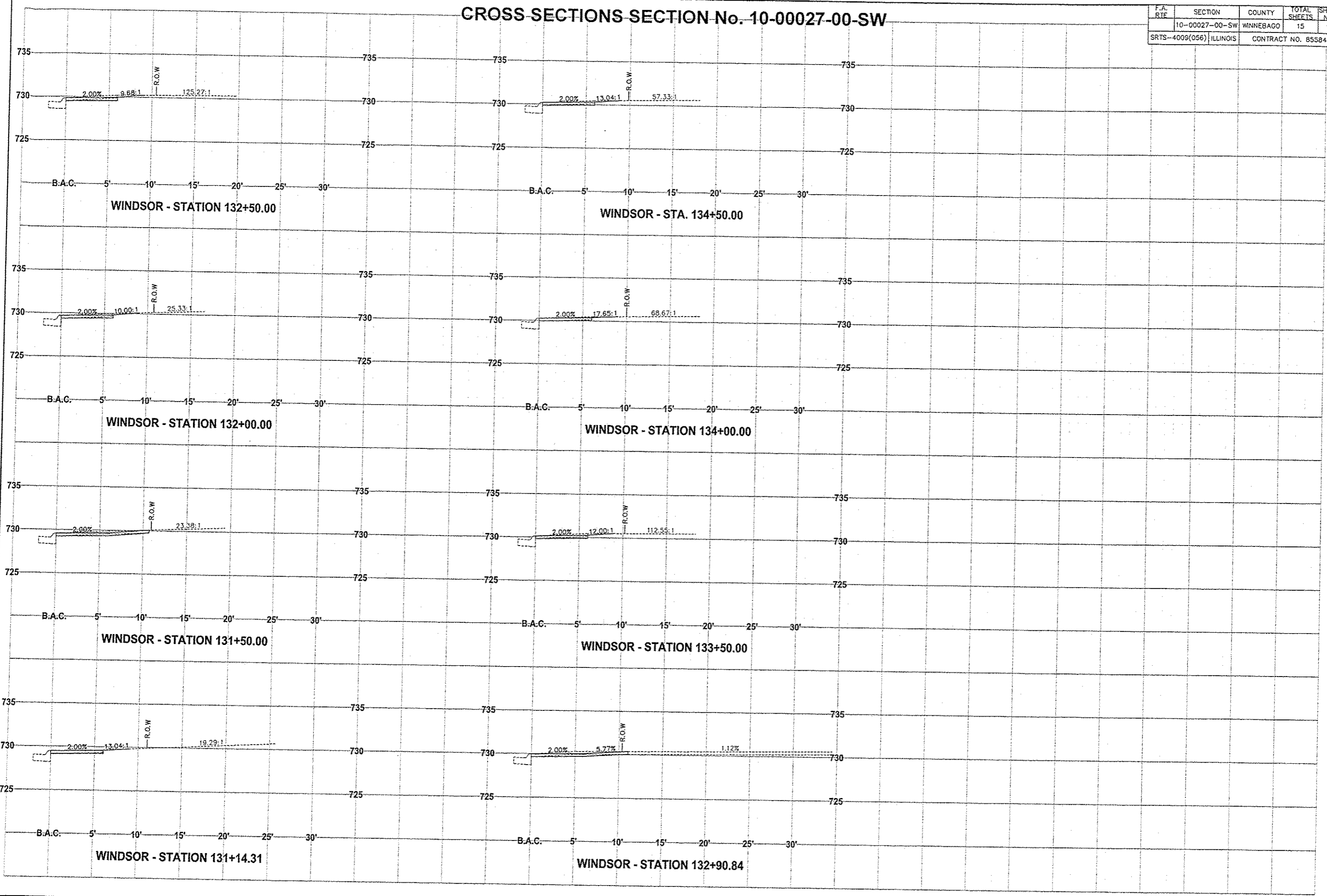
**McMAHON**  
ENGINEERS ARCHITECTS  
1700 HUNTERS ROAD, MACHESNEY PARK, E. 61115  
The City of Winnebago, IL

McMahon provides this drawing and all information contained herein as a service to the client. It is the client's responsibility to verify the accuracy of the information provided. McMahon and its staff shall not be held liable for any errors or omissions in this drawing or any consequences thereof. This drawing is the property of McMahon and shall not be reproduced or transmitted in any form or by any means, electronic, mechanical, photocopying, recording, or by any information storage and retrieval system, without the prior written consent by McMahon.

NO.	DATE	REVISION
1	2/15/13	IDOT CORRECTIONS
2	3/11/13	IDOT CORRECTIONS
3	4/05/13	IDOT CORRECTIONS

STATE OF ILLINOIS  
SAFE ROUTES TO SCHOOL SIDEWALK IMPROVEMENTS  
VILLAGE OF MACHESNEY PARK/CITY OF LOVES PARK

DESIGNED J.W.K.	DRAWN J.J.D.
SCALE HORIZ. 1" = 40' VERT. 1" = 5'	
PROJECT NO. M0031-71-0102	
DATE JAN. 18, 2013	
SHEET NO. 11	



X:\Machesney Park - M0031\Projects\SR\T\Plans\Bldg\Sheet 13 - Cross Sections\Windsor.dwg, 4/9/2013 12:01:33 PM, 1:2

# CROSS SECTIONS SECTION No. 10-00027-00-SW

F.A. RTE	SECTION	COUNTY	TOTAL SHEETS	SHEET NO.
	10-00027-00-SW	WINNEBAGO	15	12
SRTS-4009(058) ILLINOIS		CONTRACT NO. 85584		

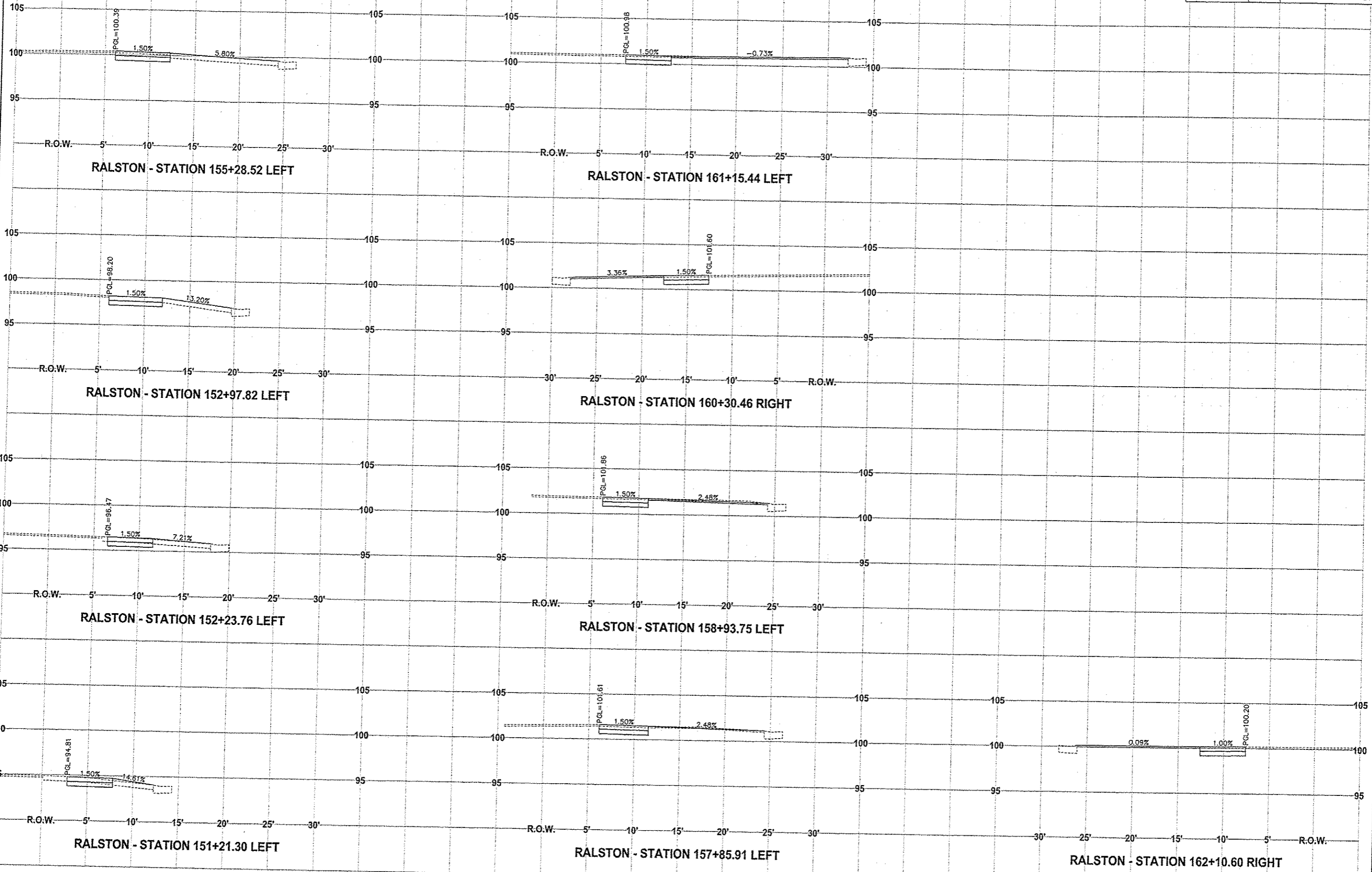
**McMAHON**  
ENGINEERS ARCHITECTS  
170 HORTON ROAD, MACHESNEY PARK, IL 61115  
Tel: (312) 351-0681  
www.mahon.com

McMahon provides this drawing and instruments of service. All rights including copyright are retained by McMahon. No part of this drawing may be reproduced, stored in a retrieval system, or transmitted in any form or by any means, electronic, mechanical, photocopying, recording, or by any information storage and retrieval system, without the prior written consent by McMahon.

NO.	DATE	REVISION
1	2/15/13	IDOT CORRECTIONS
2	3/14/13	IDOT CORRECTIONS
3	4/08/13	IDOT CORRECTIONS

STATE OF ILLINOIS  
SAFE ROUTES TO SCHOOL SIDEWALK IMPROVEMENTS  
VILLAGE OF MACHESNEY PARK/CITY OF LOVES PARK

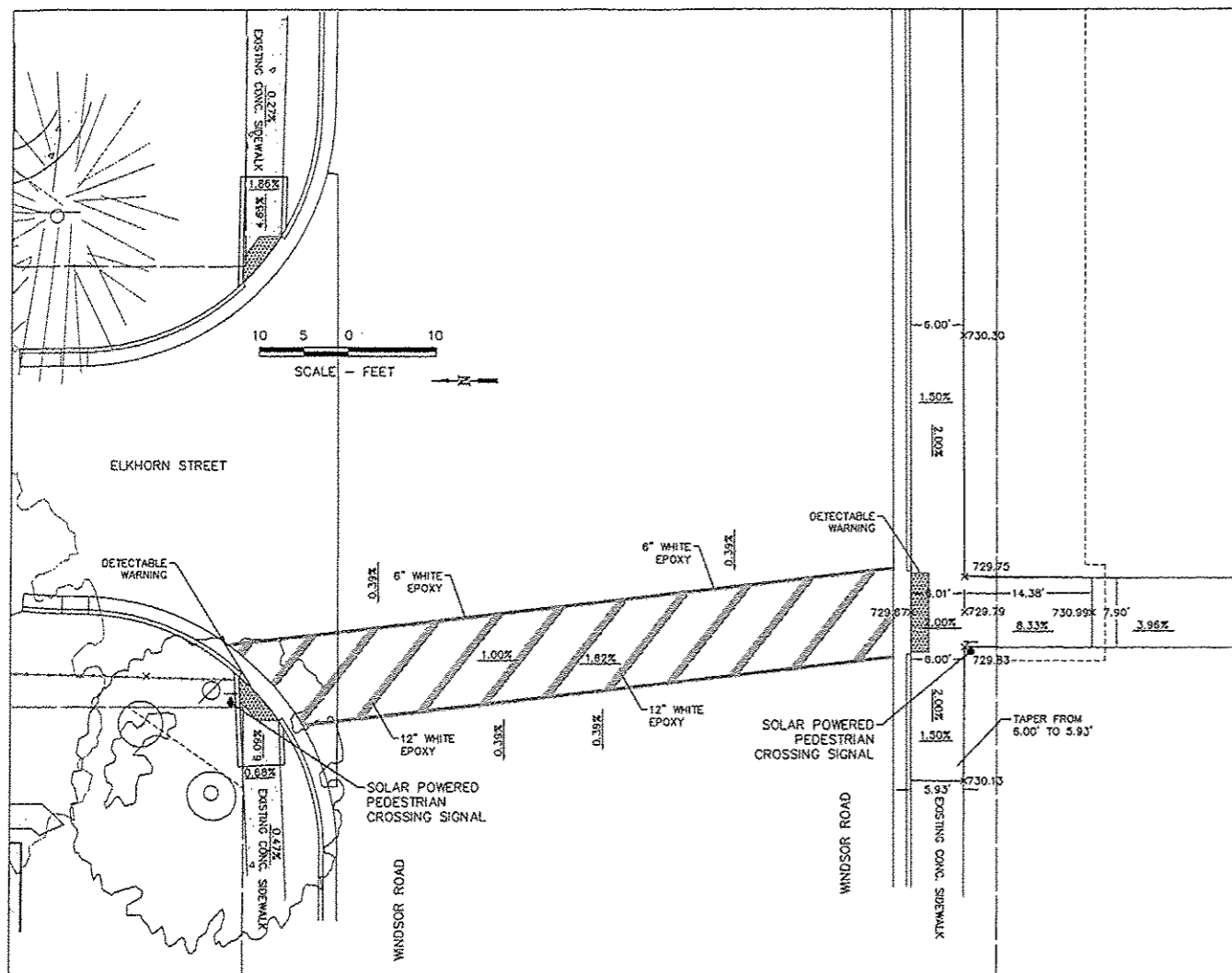
DESIGNED J.W.K.	DRAWN J.J.D.
SCALE HORZ. 1" = 5' VERT. 1" = 5'	
PROJECT NO. M0031-71-0102	
DATE JAN. 18, 2013	
SHEET NO.	



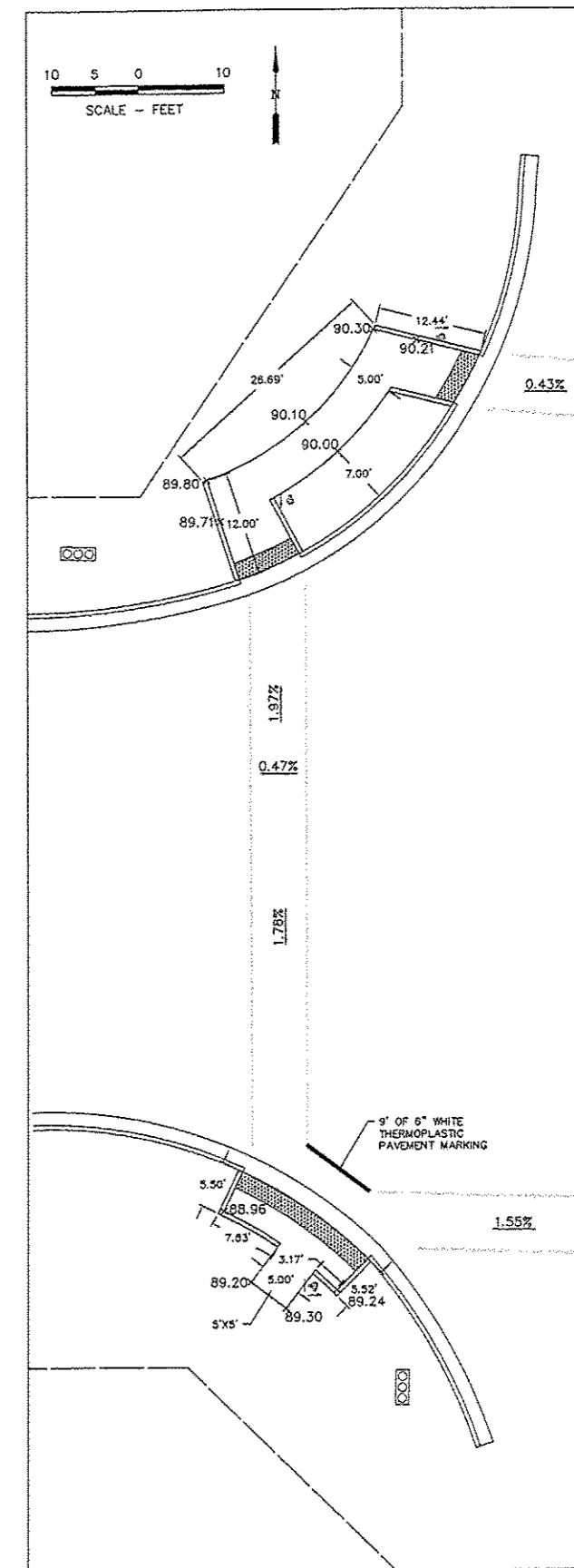
X:\Machesney Park - M0031\Projects\SRTS\Plans\Bidding\Sheet 12 - Cross Sections.dwg, 4/9/2013 12:00:49 PM, L2

ELKHORN/WINDSOR RAMPS SECTION No. 10-00027-00-SW

F.A. RTE	SECTION	COUNTY	TOTAL SHEETS	SHEET NO.
	10-00027-00-SW	WINNEBAGO	15	13
SRTS-4009(056) ILLINOIS		CONTRACT NO. 85584		



ELKHORN / WINDSOR  
TYPE A RAMP



RALSTON/BLUEBONNET  
WEST SIDE - TYPE A RAMP

McMAHON ENGINEERS ARCHITECTS  
1100 N. WASHINGTON ST. SUITE 100  
MILWAUKEE, WI 53233  
TEL: (414) 333-8800 FAX: (414) 333-8801  
www.mahon.com

NO.	DATE	REVISION
1	2/15/13	IDOT CORRECTIONS
2	3/14/13	IDOT CORRECTIONS
3	4/08/13	IDOT CORRECTIONS

STATE OF ILLINOIS  
SAFE ROUTES TO SCHOOL SIDEWALK IMPROVEMENTS  
VILLAGE OF MACHESNEY PARK/CITY OF LOVES PARK

DESIGNED J.W.K.	DRAWN J.J.D.
SCALE 1" = 10'	
PROJECT NO. M0031-71-0102	
DATE JAN. 18, 2013	
SHEET NO.	

**RALSTON RAMPS SECTION No. 10-0027-00-SW**

F.A. R.T.E.	SECTION	COUNTY	TOTAL SHEETS	SHEET NO.
	10-00027-00-SW	WINNEBAGO	15	14
SRTS-4009(056) ILLINOIS		CONTRACT NO. 85584		

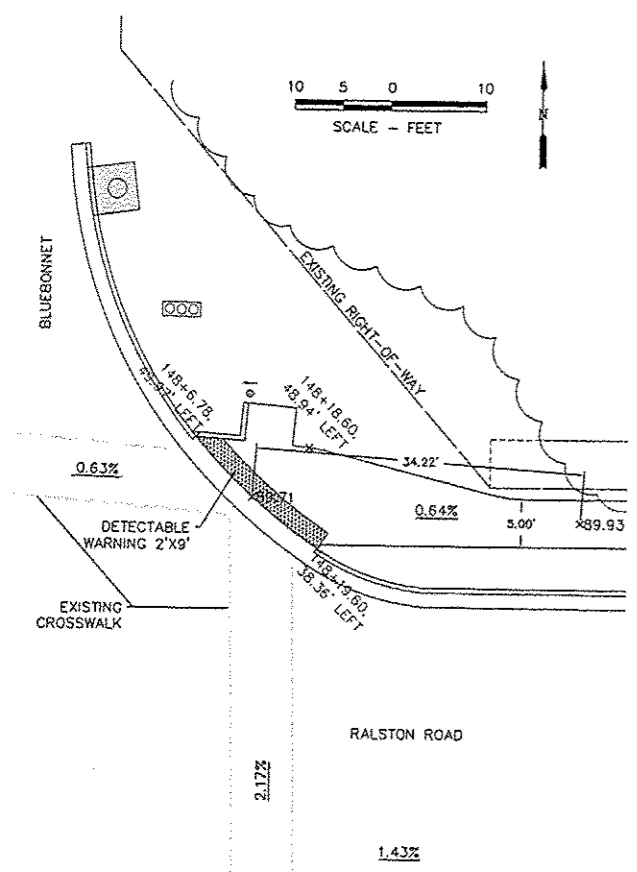
**McMAHON**  
ENGINEERS & ARCHITECTS  
1700 HUNTERS ROAD, MADISON PARK, IL 61115  
TEL: (312) 991-0881  
WWW.MCMAPROF.COM

McMahon provides this drawing and instruments of service. All rights including copyright are retained by McMahon. The client and/or recipient is permitted by law to infrequently use road markings, however, for any other use without the written consent of McMahon.

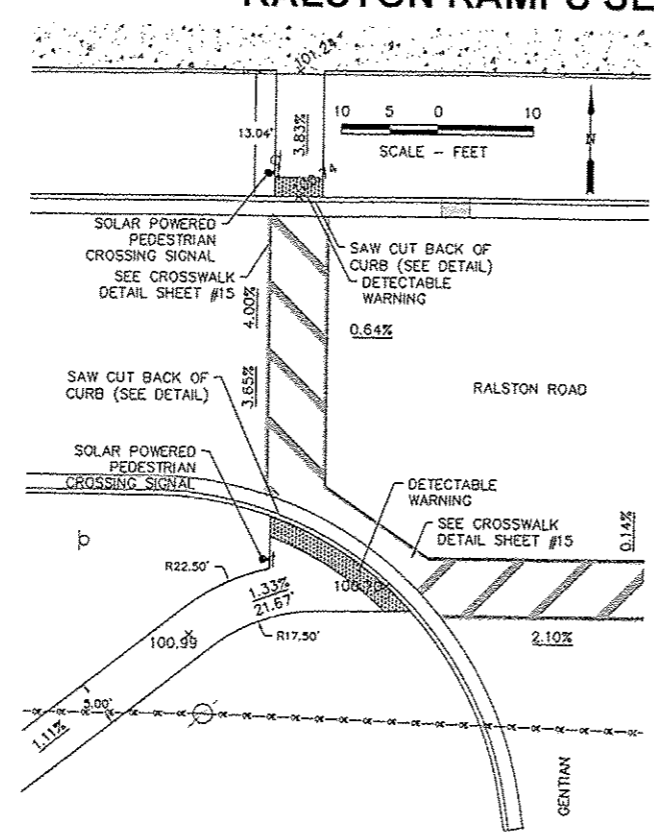
NO.	DATE	REVISION
1	2/15/13	DOT CORRECTIONS
2	3/14/13	DOT CORRECTIONS
3	4/08/13	DOT CORRECTIONS

STATE OF ILLINOIS  
SAFE ROUTES TO SCHOOL SIDEWALK IMPROVEMENTS  
VILLAGE OF MACHESNEY PARK/CITY OF LOVES PARK

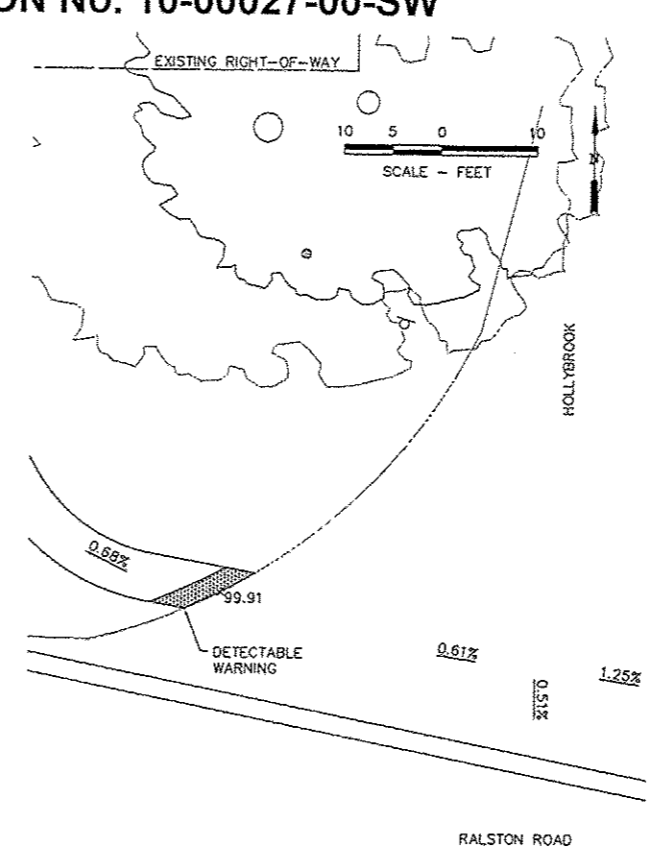
DESIGNED J.W.K.	DRAWN J.J.D.
SCALE 1" = 10'	
PROJECT NO. M0031-71-0102	
DATE JAN. 18, 2013	
SHEET NO.	



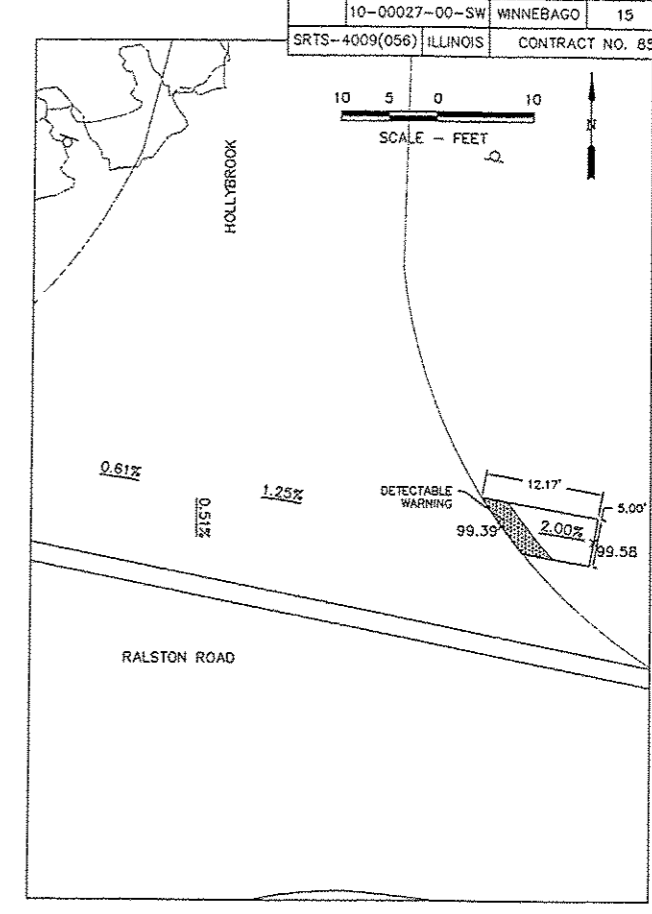
**NE QUADRANT RALSTON / BLUEBONNET**  
TYPE A RAMP



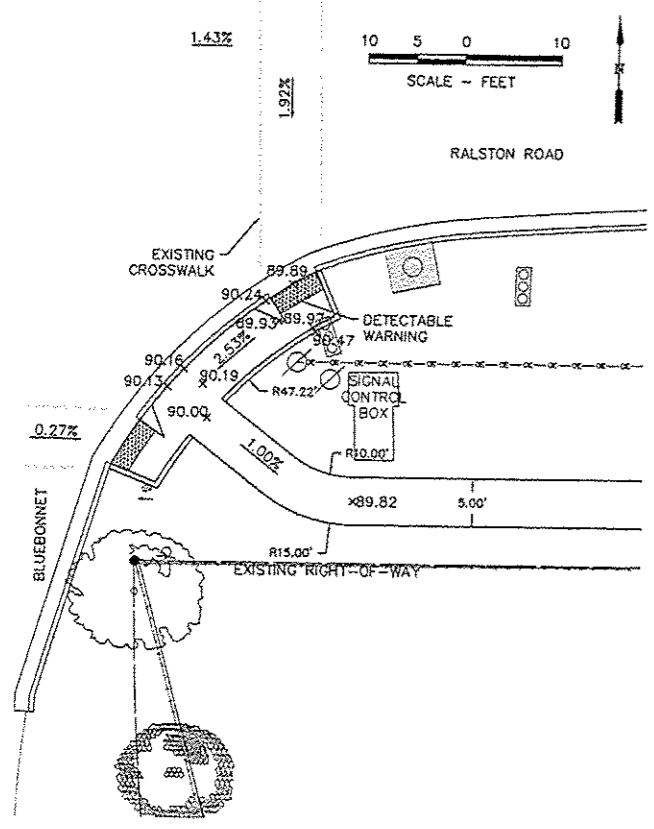
**SW QUADRANT RALSTON / GENTIAN**  
TYPE A RAMP



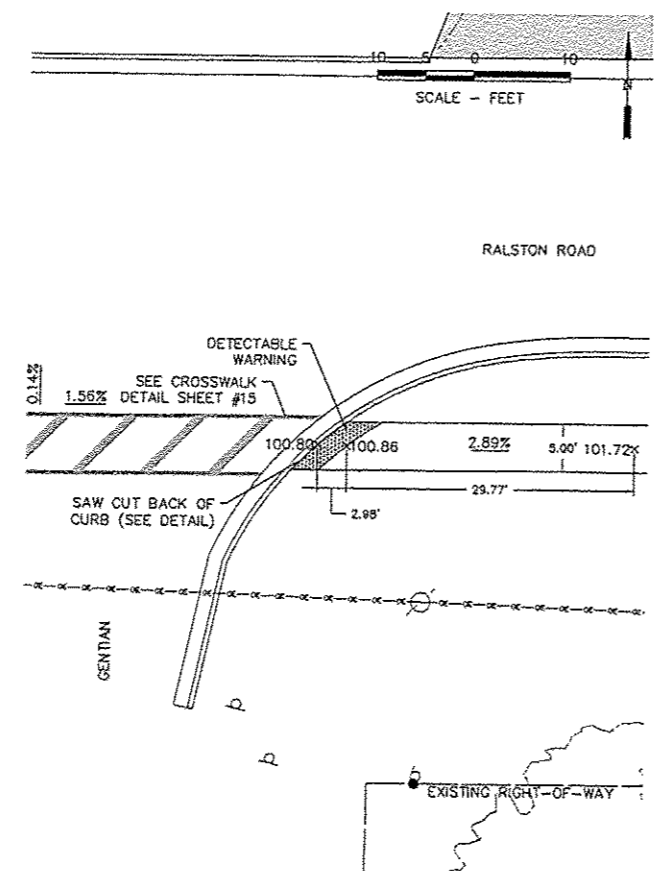
**NW QUADRANT RALSTON / HOLLYBROOK**  
TYPE A RAMP



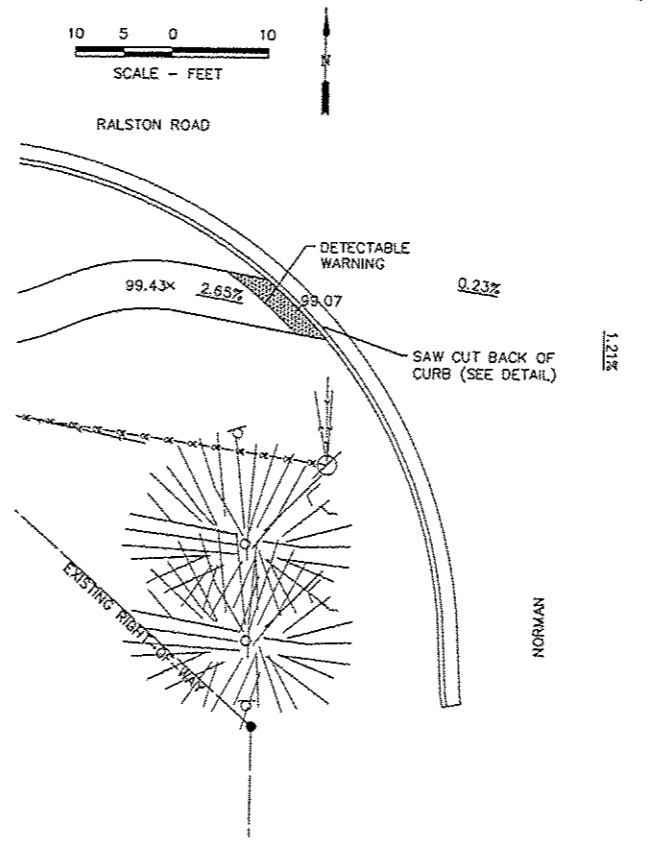
**NE QUADRANT RALSTON / HOLLYBROOK**  
TYPE A RAMP



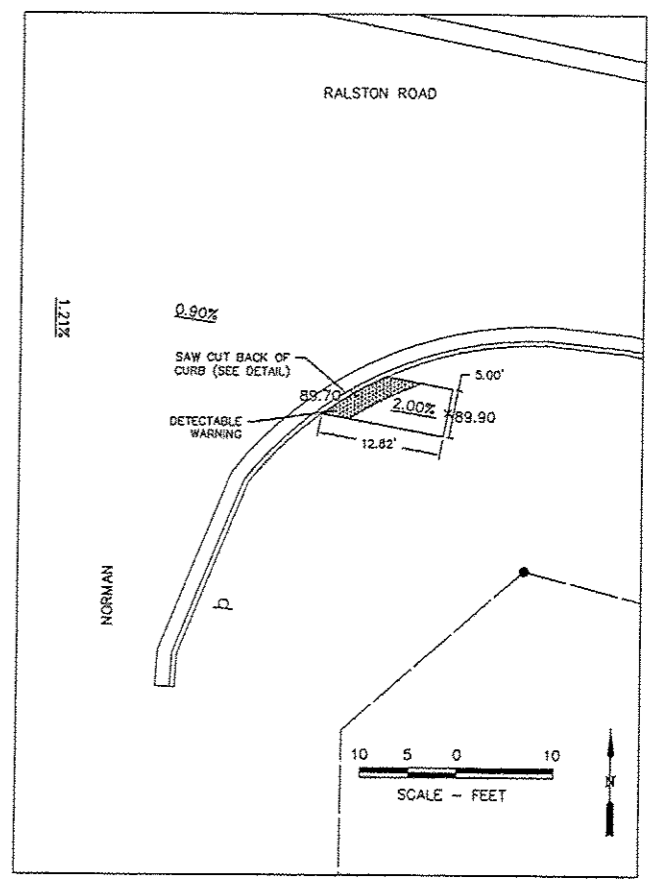
**SE QUADRANT RALSTON / BLUEBONNET**  
TYPE A RAMP



**SE QUADRANT RALSTON / GENTIAN**  
TYPE A RAMP



**SW QUADRANT RALSTON / NORMAN**  
TYPE A RAMP



**SE QUADRANT RALSTON / NORMAN**  
TYPE A RAMP

# DETAILS SECTION No. 10-00027-00-SW

F.A. RTE	SECTION	COUNTY	TOTAL SHEETS	SHEET NO.
	10-00027-00-SW	WINNEBAGO	15	15
SRTS-4009(056)		ILLINOIS	CONTRACT NO. 85684	

**McMAHON**  
ENGINEERS ARCHITECTS  
1700 HATCHERS ROAD, MACHESNEY PARK, IL 61115  
Tel: (815) 686-0000 Fax: (815) 686-9691  
www.mcmahon.com

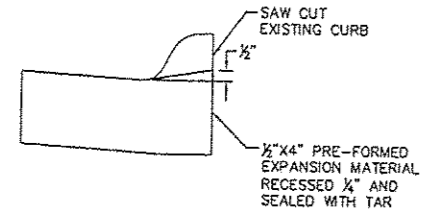
McMahon provides this drawing and all data, regardless of form, as advisory only. It is not to be used for construction without the client's approval. The client and/or recipient shall be responsible for obtaining all necessary permits and hold McMahon harmless for any and all claims, damages, or costs without prior written consent by McMahon.

NO.	DATE	REVISION
1	2/15/13	IDOT CORRECTIONS
2	3/14/13	IDOT CORRECTIONS
3	4/08/13	IDOT CORRECTIONS

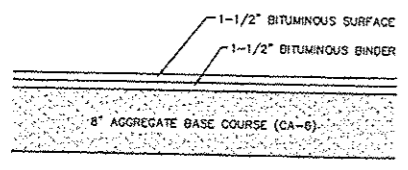
STATE OF ILLINOIS  
SAFE ROUTES TO SCHOOL SIDEWALK IMPROVEMENTS  
VILLAGE OF MACHESNEY PARK/CITY OF LOVES PARK

DESIGNED J.W.K.	DRAWN J.J.D.
SCALE NONE	
PROJECT NO. M0031-71-0102	
DATE JAN. 18, 2013	
SHEET NO.	

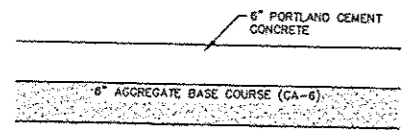
NOTES:  
TYPICAL WIDTH OF PROPOSED SIDEWALK IS 5- FEET, UNLESS OTHERWISE NOTED ON PLANS.  
THE MAXIMUM SLOPE OF RAMPS SHALL NOT EXCEED 8.33%.  
DETECTABLE WARNINGS FOR BOTH RALSTON AND ELKHORN SHALL MATCH EXISTING WARNINGS ALREADY IN PLACE.



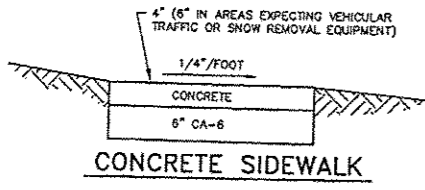
TYPICAL CURB DETAIL



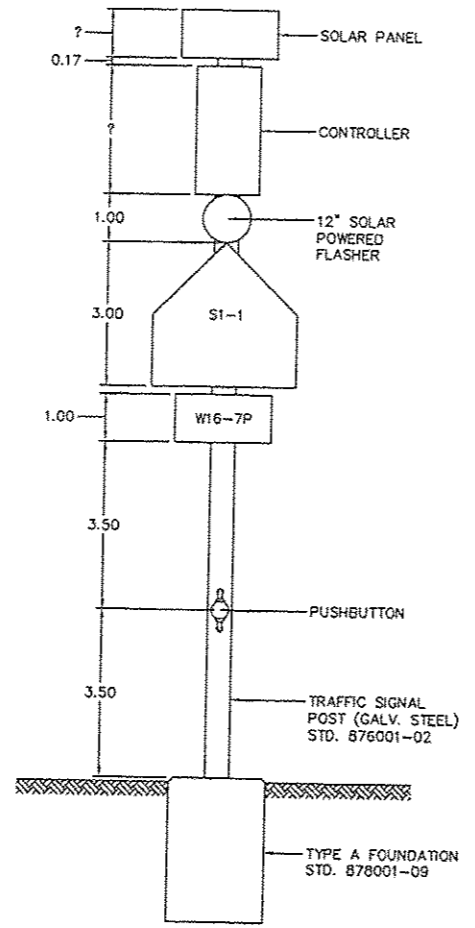
TYPICAL BIT. DRIVEWAY RESTORATION



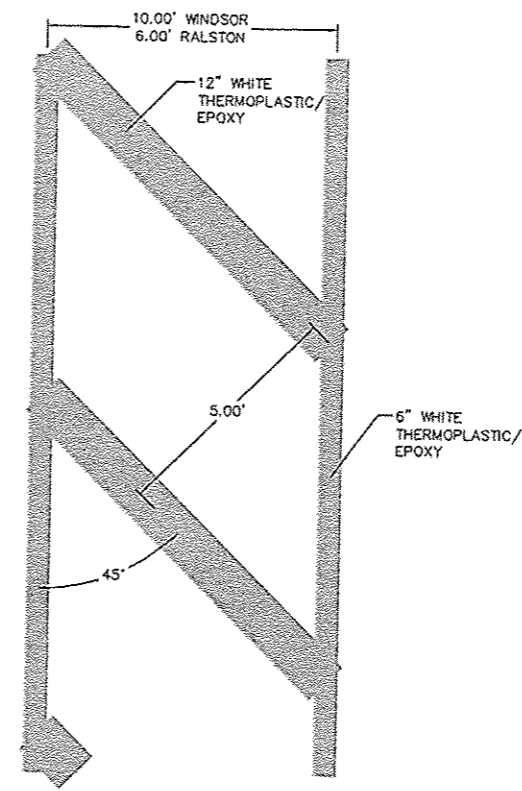
TYPICAL CONC. DRIVEWAY RESTORATION



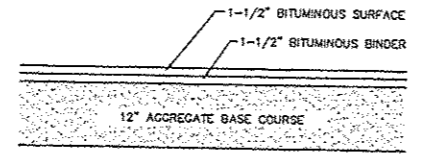
CONCRETE SIDEWALK



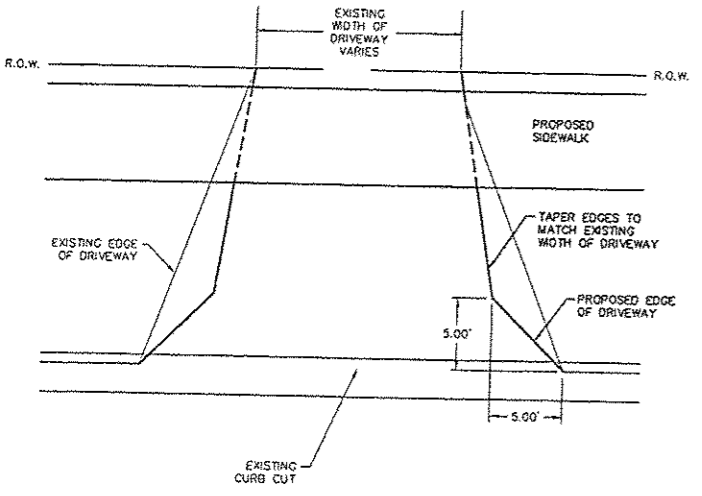
SOLAR POWERED PEDESTRIAN CROSSING SIGNAL SYSTEM COMPLETE (INCLUDES TWO UNITS PER SYSTEM)



TYPICAL CROSSWALK DETAIL



BITUMINOUS DRIVEWAY (SCHOOL DRIVE)  
STA. 152+23.76 (BEHIND SIDEWALK)  
STA. 152+97.82 (BEHIND SIDEWALK)  
STA. 155+28.52 (BEHIND SIDEWALK)  
STA. 157+85.91



GEOMETRIC DETAIL FOR DRIVEWAYS