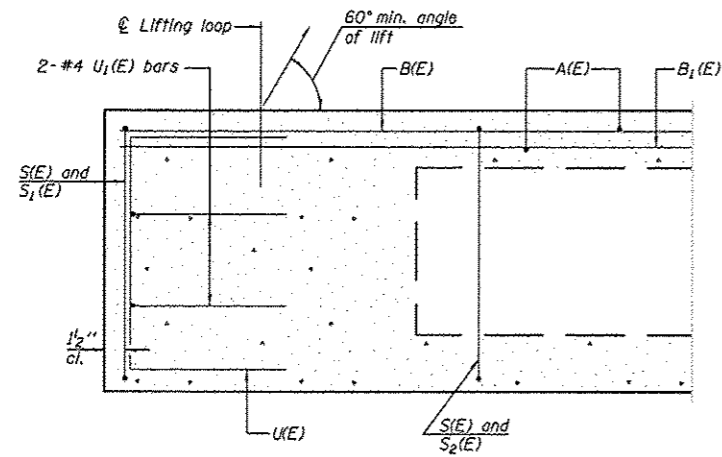
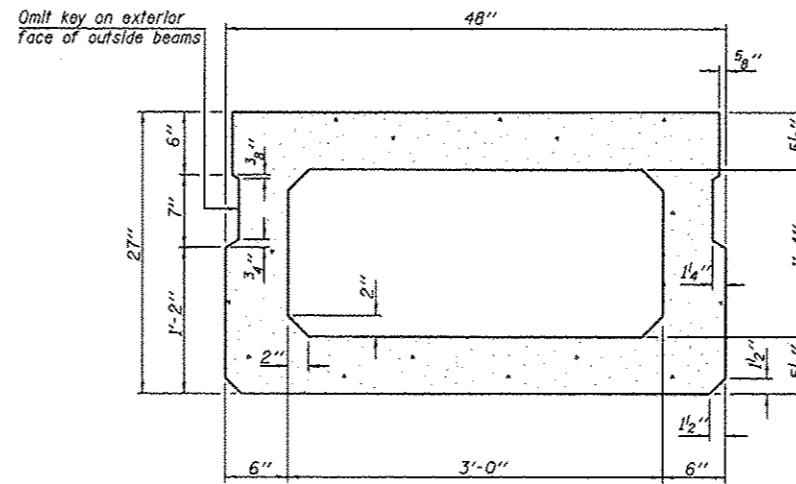


FAS ROUTE NO	SEC	COUNTY	TOTAL SHEETS	SHEET NO
-	*	STEPHENSON	14	5
ILLINOIS PROJECT BROS-0177(045)				
* 12-03120-00-BR				
CONTRACT NO. 85587				

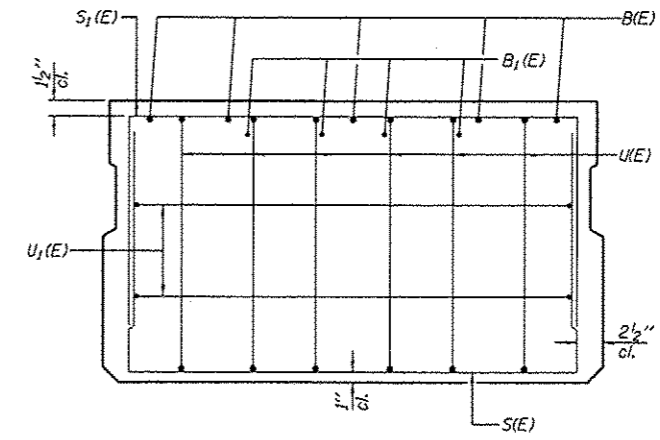
SCALE: 1" = 4'



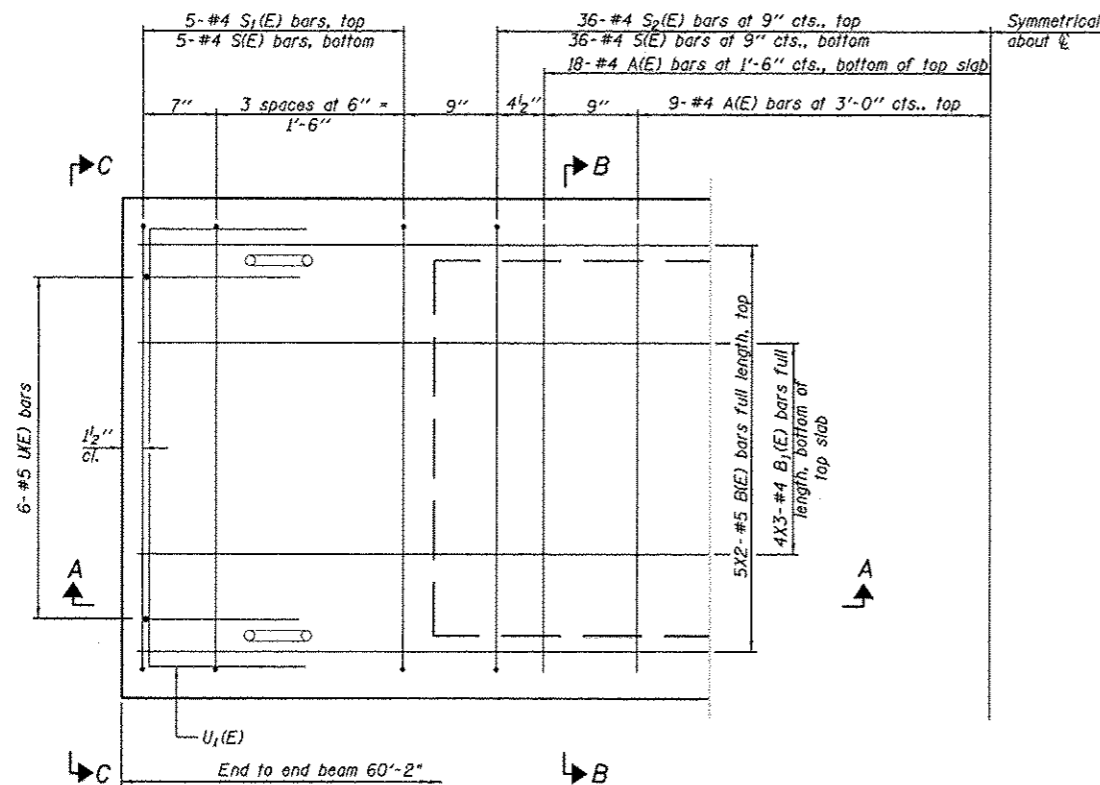
SECTION A-A



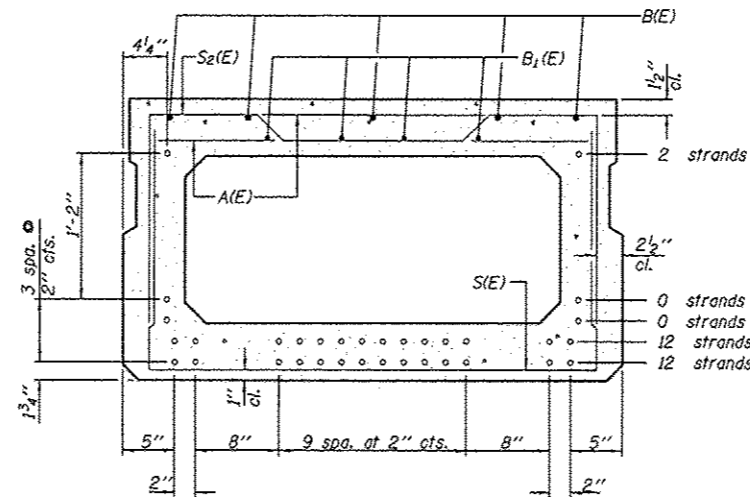
SECTION B-B  
(Showing dimensions)



VIEW C-C



PLAN VIEW



SECTION B-B

(Showing reinforcement and permissible strand locations)  
Note: Place the number of strands specified in each row symmetrically about the centerline of beam in the permissible strand locations shown.

BAR LIST  
ONE BEAM ONLY  
(For information only)

Bar	No.	Size	Length	Shape
A(E)	56	#4	3'-7"	—
B(E)	10	#5	31'-2"	—
B1(E)	12	#4	31'-0"	—
S(E)	82	#4	7'-5"	U
S1(E)	10	#4	6'-11"	U
S2(E)	72	#4	7'-2"	U
U(E)	12	#5	4'-6"	U
U1(E)	4	#4	6'-0"	U

Note: See sheet 6 of 14 for additional details and Bill of Material.

Note: Spacing of S(E) and S2(E) bars may be adjusted up to 4" in the immediate area of the transverse tie diaphragms to miss the block outs for the transverse ties.

MINIMUM BAR LAP

#4 bar = 2'-0"  
#5 bar = 2'-6"

REVISIONS	DATE

DESIGNED BY:	DAS
CHECKED BY:	MARKER
DATE:	
PROJECT:	
SCALE:	

**wendler**  
GROUNDING SOLUTIONS  
engineers - surveyors - scientists  
www.wendlerps.com    ph: 315.288.2261  
Illinois Professional Design Firm No. 034-00045

DECK BEAM DETAILS  
OF  
NORTH REES ROAD BRIDGE  
FOR  
STEPHENSON COUNTY

SHEET TITLE

DETAILS

JOB NUMBER  
2120077

DATE  
3/25/2013

SHEET NO.

5 of 14

S.N. 089-3286  
27" X 48" PPC DECK BEAMS  
CONCRETE OVERLAY DETAILS  
SECTION 12-03120-00-BR  
STEPHENSON COUNTY