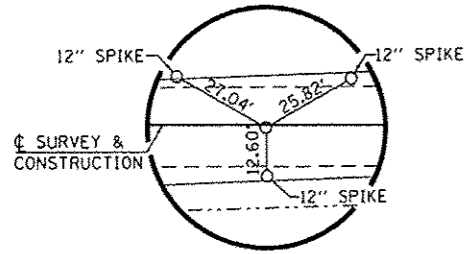
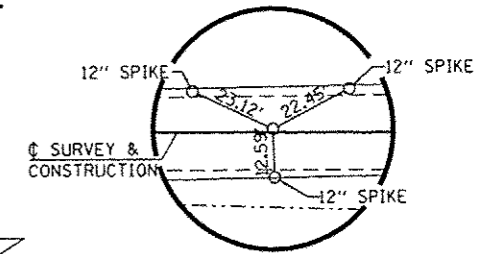


W. 1/2, N.E. 1/4, SECTION 8, T. 45 N., R. 4 E., 3RD P.M.

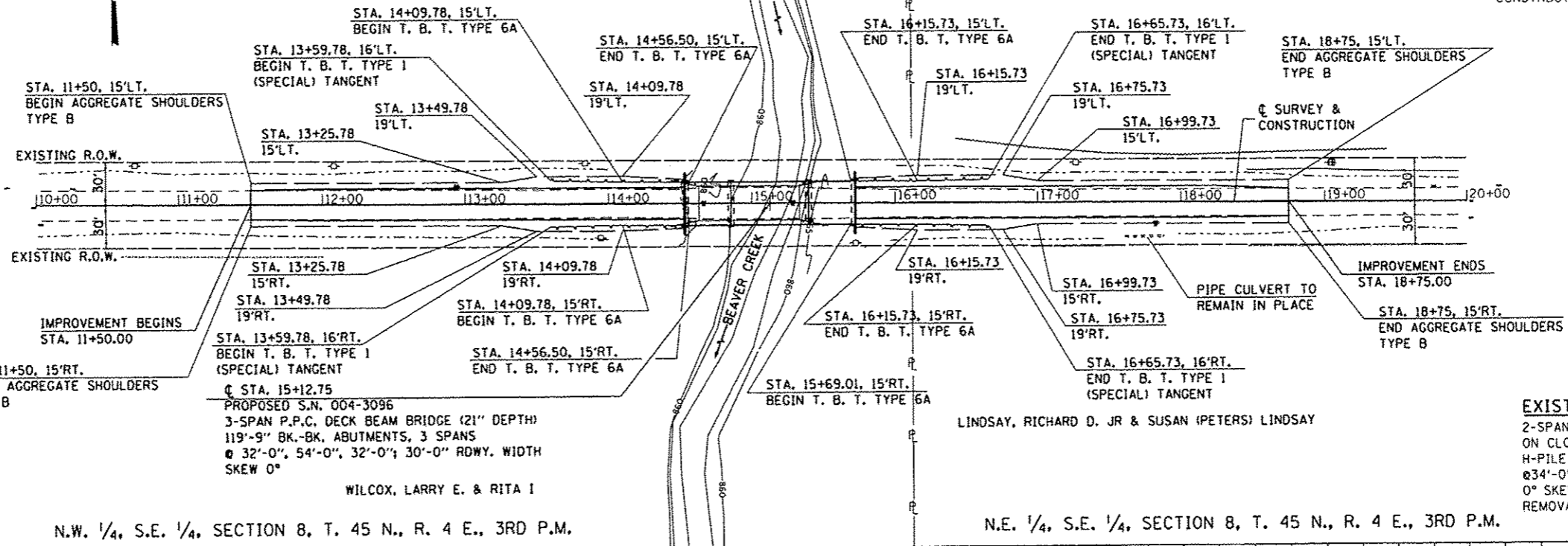
E. 1/2, N.E. 1/4, SECTION 8, T. 45 N., R. 4 E., 3RD P.M.



CONTROL POINT 5
0.70' RT. STA. 9+99.98
P.K. NAIL



CONTROL POINT 6
0.85' LT. STA. 20+00.01
P.K. NAIL



CHANNEL EXCAVATION

THE CHANNEL SHALL BE EXCAVATED AS SHOWN WITHIN THE LIMITS OF THE PROPOSED STRUCTURE THEN TAPER TO THE EXISTING CHANNEL AT THE R.O.W. LINES. SUITABLE EXCAVATION MATERIAL TO BE USED IN THE EMBANKMENT AS DIRECTED BY THE ENGINEER.

PROPOSED S.N. 004-3096
3-SPAN P.P.C. DECK BEAM BRIDGE (21' DEPTH)
119'-9" BK.-BK. ABUTMENTS, 3 SPANS
@ 32'-0", 54'-0", 32'-0"; 30'-0" ROWY. WIDTH
SKEW 0°

WILCOX, LARRY E. & RITA I

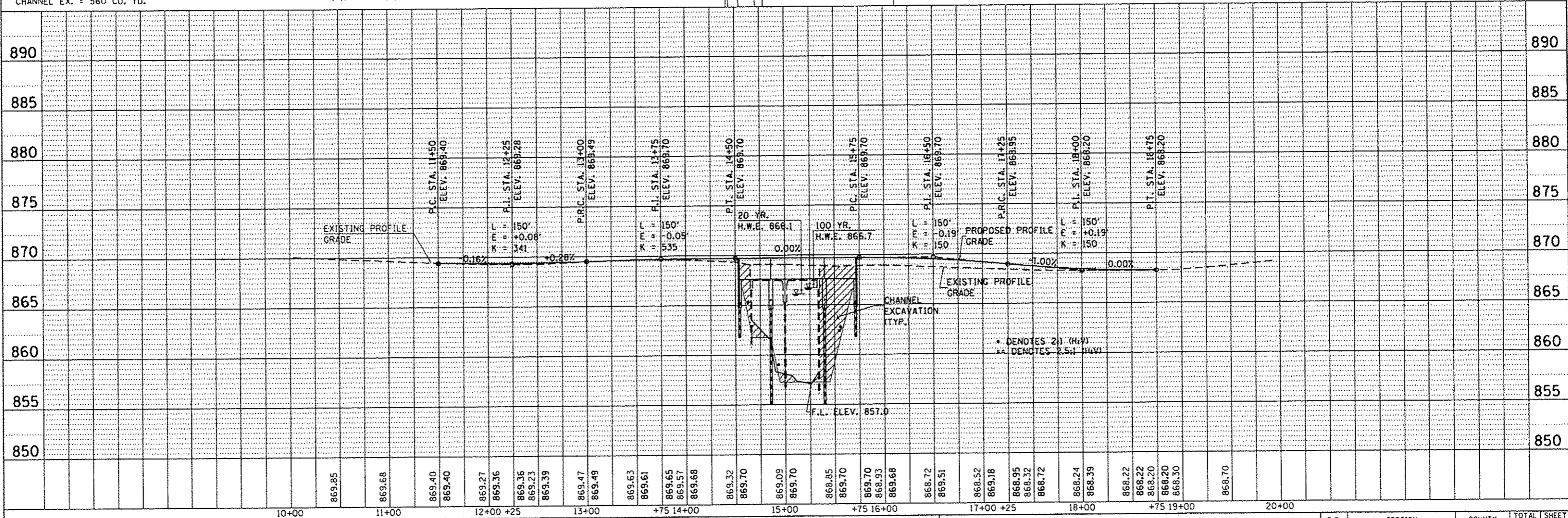
LINDSAY, RICHARD D. JR & SUSAN (PETERS) LINDSAY

EXISTING STRUCTURE NO. 004-3030
2-SPAN CONTINUOUS R.C. SLAB BRIDGE
ON CLOSE TIMBER ABUTMENTS & STEEL
H-PILE BENT PIER, 70'-6" BK.-BK. ABUTS., 2 SPANS
@ 34'-0", 24'-0" O.-O. DECK, 22'-0" ROWY.,
0° SKEW.
REMOVAL OF EXISTING STRUCTURES = 1 EACH

CHANNEL EX. = 560 CU. YD.

N.W. 1/4, S.E. 1/4, SECTION 8, T. 45 N., R. 4 E., 3RD P.M.

N.E. 1/4, S.E. 1/4, SECTION 8, T. 45 N., R. 4 E., 3RD P.M.



FILE NAME XXX-548.P&P.dgn	DESIGNED - G.J.C. DRAWN - A.D.S. CHECKED - R.D.F. DATE -	REVISED - REVISED - REVISED - REVISED -	4440 ASH GROVE SPRINGFIELD, IL. 62711 (217) 793-8600 www.fehr-graham.com	FEHR GRAHAM ENGINEERING & ENVIRONMENTAL ILLINOIS DESIGN FIRM NO. 104-003205	FREEPORT, IL ROCKFORD, IL ROCHELLE, IL SPRINGFIELD, IL MONROE, WJ	PLAN AND PROFILE - T.R. 33 (CENTERVILLE ROAD)	T.R. 33	SECTION 12-08120-00-BR	COUNTY BOONE	TOTAL SHEETS 26	SHEET NO. 4	CONTRACT NO. 85589	SCALE:	SHEET NO. OF SHEETS	STA. TO STA.	FED. ROAD DIST. NO.	ILLINOIS FED. AID PROJECT	12-540
------------------------------	---	--	---	--	---	---	------------	---------------------------	-----------------	--------------------	----------------	--------------------	--------	---------------------	--------------	---------------------	---------------------------	--------