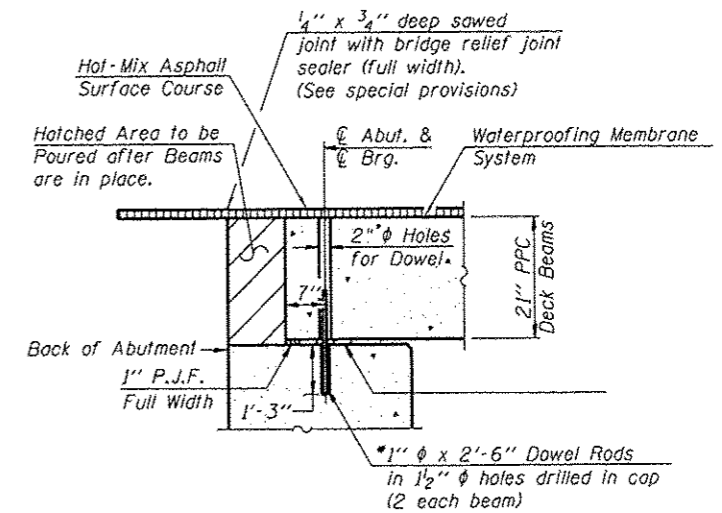
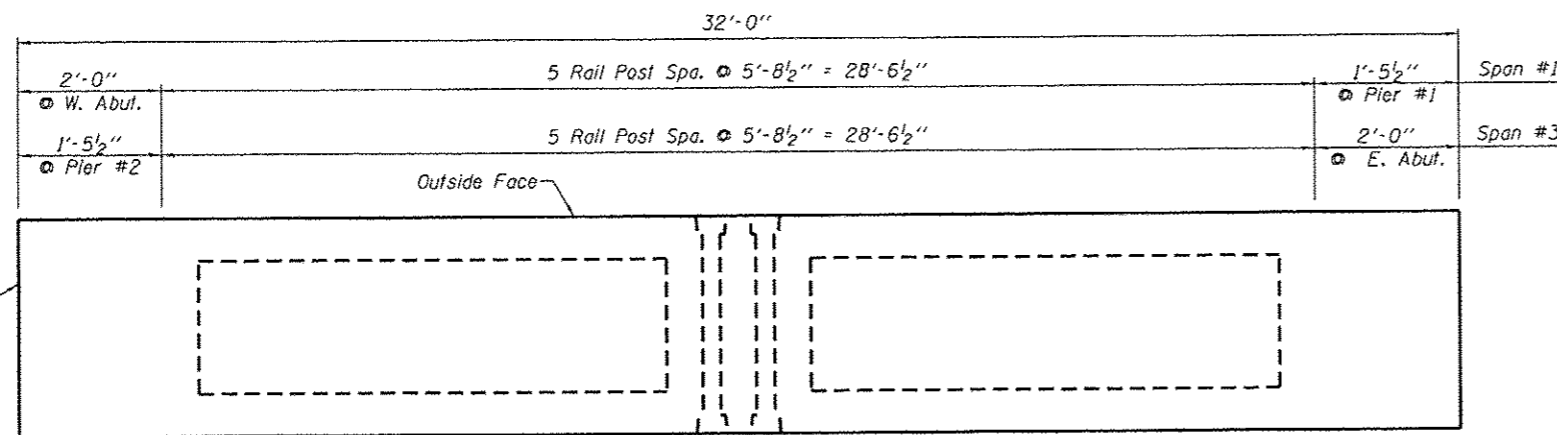


HALF CROSS SECTION

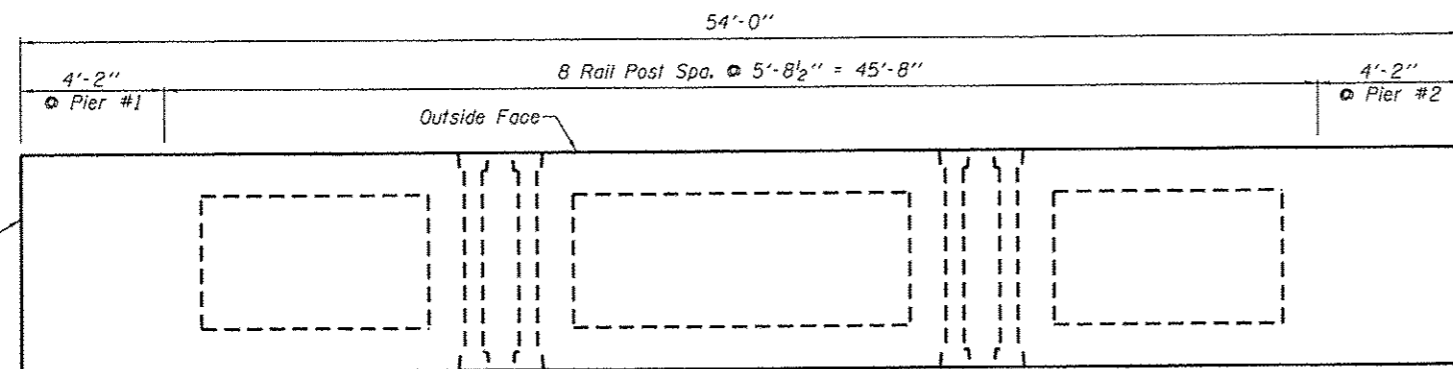


SEC. THRU ABUT.

\* Note: After beams are in place, 1/2" holes shall be drilled into the Substructure, and the dowel rods grouted in place and allowed to cure (Min. 24 Hrs.) prior to grouting shear key.

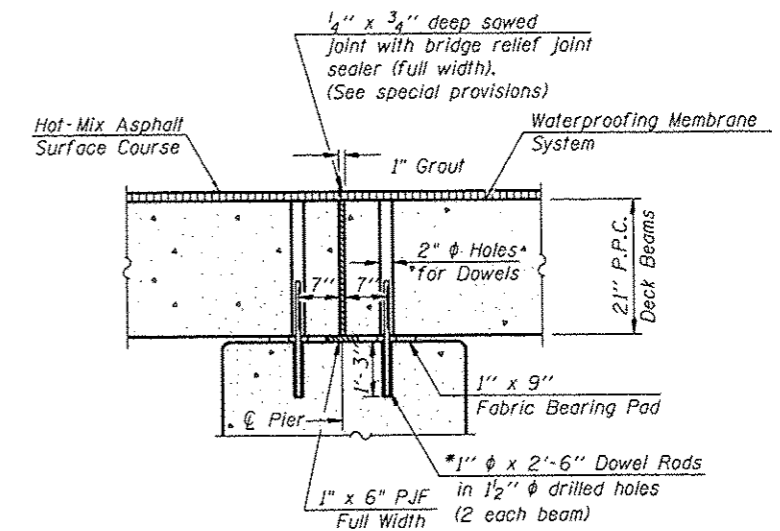


SPAN #1 OR #3

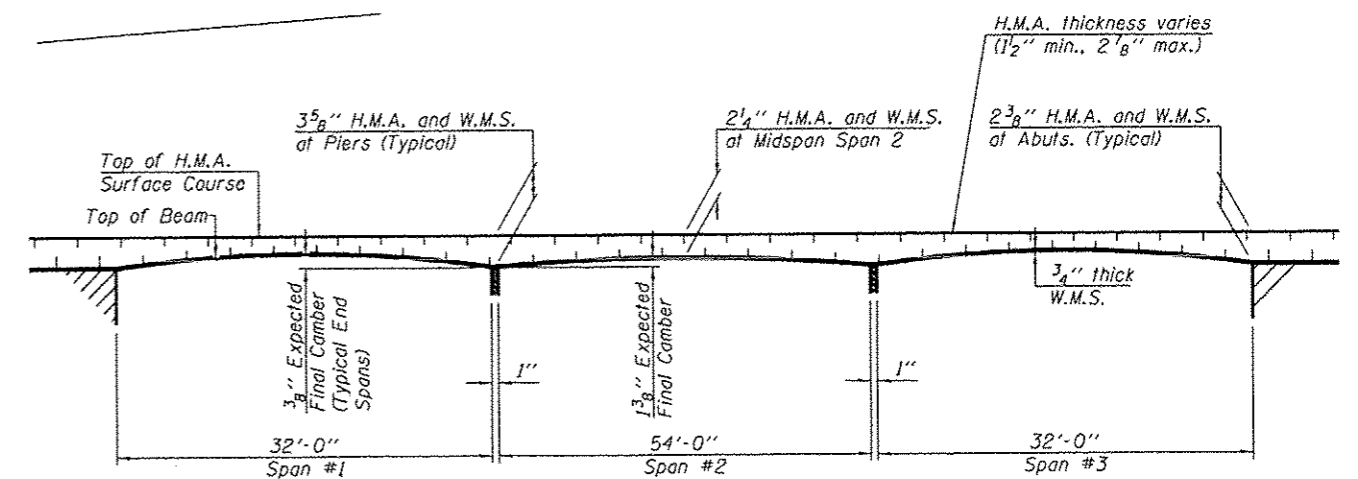


SPAN #2

RAIL POST SPACING PLAN



SEC. AT PIER



HOT-MIX ASPHALT SURFACE PROFILE

FILE NAME \* 12-540\_SUPERSTRUCTURE.dgn

USER NAME \* rfitzanko  
PLOT SCALE \* #SCALE#  
PLOT DATE \* 3/23/2013

DESIGNED - J.A.M.  
CHECKED - A.R.K.  
DRAWN - A.D.S.  
CHECKED -

REVISED -  
REVISED -  
REVISED -  
REVISED -

**FEHR GRAHAM**  
ENGINEERING & ENVIRONMENTAL  
ILLINOIS DESIGN FIRM NO. 181-003429

FREEDPORT, IL ROCKFORD, IL  
ROCHELLE, IL SPRINGFIELD, IL  
MORRIS, IL

SUPERSTRUCTURE  
S.N. 004-3096

SHEET NO. 3 OF 15 SHEETS

T.R.	SECTION	COUNTY	TOTAL SHEETS	SHEET NO.
33	12-08120-00-BR	BOONE	26	9
CONTRACT NO. 85589				

ILLINOIS FED. AID PROJECT