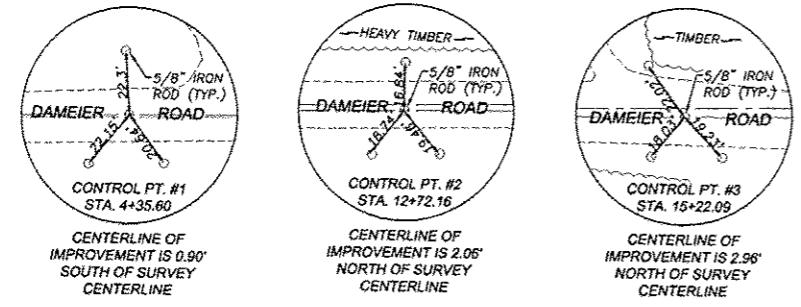
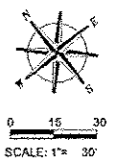


FAS ROUTE NO	SEC	COUNTY	TOTAL SHEETS	SHEET NO
-	*	STEPHENSON	16	3

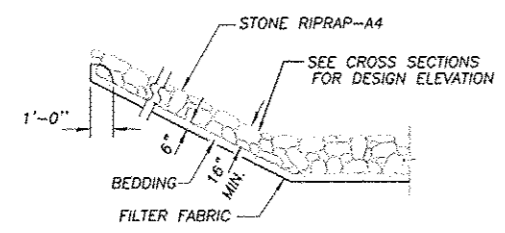
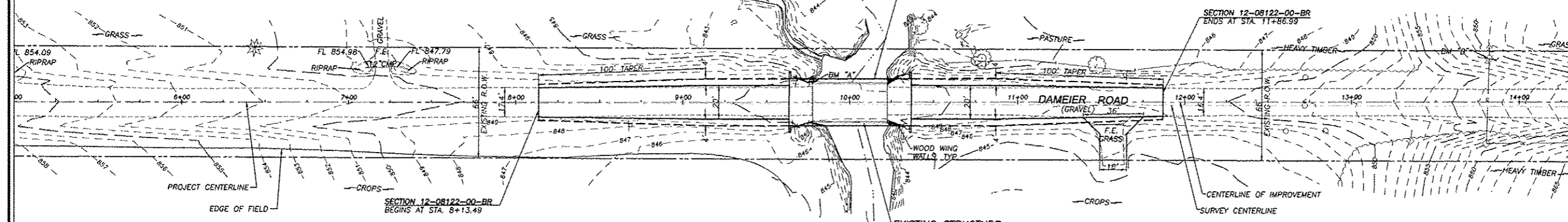
ILLINOIS PROJECT BROS-0177(044)
 * 12-08122-00-BR
 CONTRACT NO. 85590



BENCHMARKS
 BENCHMARK "A"
 SET CHISELED "C" AT NORTH CORNER OF EXISTING STRUCTURE
 ELEVATION: 851.32
 BENCHMARK "B"
 SET COTTON SPINDLE IN SOUTH FACE OF POWER POLE W/TRANSFORMER
 ±360' SE OF BRIDGE. NORTH ROW DAMEIER RD. NEAR HOUSE #11200
 ELEVATION: 861.44
 BENCHMARK "C"
 SET COTTON SPINDLE IN SOUTH FACE OF 1ST POWER POLE SE OF
 BRIDGE. SOUTH ROW DAMEIER RD. NEAR HOUSE #11208
 ELEVATION: 861.44

PROPOSED STRUCTURE
 STA. 10+00
 SINGLE SPAN BRIDGE
 73'-6" BK-BK, ABUTS, 28' WIDE
 33" DEEP PPC BK BEAMS 0' SKEW
 SPILL-THRU PILE BENT ABUTMENTS

EXISTING STRUCTURE
 STA. 10+00
 SINGLE SPAN PRECAST/PRESTRESSED
 CONCRETE DECK BRIDGE ON TIMBER
 PILING WITH CLOSED TIMBER BACKING
 ABUTMENTS & WINGS ±44' LONG
 0' SKEW



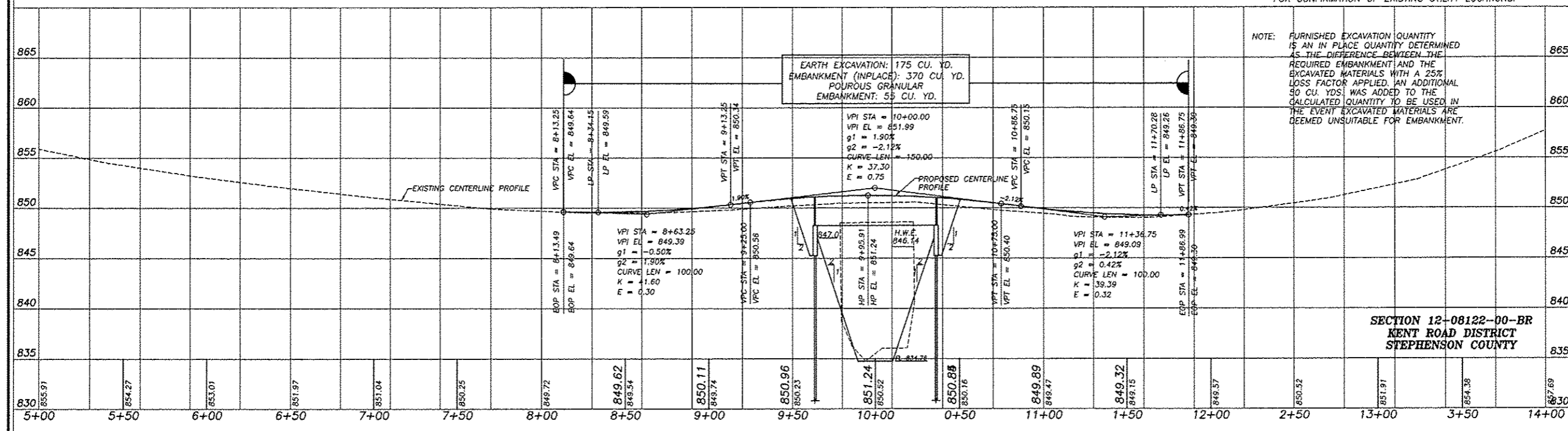
SCALES:
 1" = 30' HOR
 1" = 5' VER

**SECTION THRU STONE
 DUMPED RIPRAP**

NOTES
 ALL FENCES DISTURBED BY CONSTRUCTION ACTIVITIES SHALL BE
 RELOCATED AND RESTORED BY THE CONTRACTOR AS DIRECTED BY
 BY THE ENGINEER.
 (SEE SPECIAL PROVISIONS - COST CONSIDERED INCIDENTAL TO
 THE CONTRACT)

UTILITIES
 GAS: NICOR
 SCOTT PUFFER
 4651 LINDEN ROAD
 ROCKFORD, ILLINOIS 61109
 TELEPHONE: FRONTIER COMMUNICATIONS
 2239 NEWBERG ROAD
 BELVIDERE, ILLINOIS 61008
 ELECTRIC: COM ED
 123 ENERGY AVENUE
 ROCKFORD, ILLINOIS

THE LOCATIONS OF UTILITY FACILITIES AS SHOWN ON THESE
 PLANS ARE AN ESTIMATE AND NOT INTENDED AS FIELD
 LOCATIONS FOR CONSTRUCTION. THE CONTRACTOR IS
 RESPONSIBLE FOR CONTACTING ALL UTILITIES PRIOR TO
 CONSTRUCTION AND CALLING J.U.L.I.E. AT 800-892-0123
 FOR CONFIRMATION OF EXISTING UTILITY LOCATIONS.



**INFRASTRUCTURE IMPROVEMENTS
 OF
 BRIDGE REPLACEMENT - DAMEIER ROAD
 FOR
 STEPHENSON COUNTY**

**SHEET TITLE
 PLAN
 &
 PROFILE**

JOB NUMBER
 2120191

DATE
 04/10/2013

SHEET NO.

3 of 16

REVISIONS

REVISIONS

wendler
 wendler engineering services, inc.
 geotechnical solutions
 engineers - surveyors - scientists
 www.wendlereng.com ph: 815.283.2261
 800 Professional Office Bldg. No. 104-00048