

06-14-13 LETTING ITEM 172

STATE OF ILLINOIS
DEPARTMENT OF TRANSPORTATION
PLANS FOR PROPOSED
HIGHWAY BRIDGE PROGRAM
LASALLE COUNTY
SECTION 13-00727-00-BR
F.A.S. 270 (CH 19) OVER FIRST CREEK
PROJECT NO. BRS-0270(102)
JOB NUMBER C-93-061-13

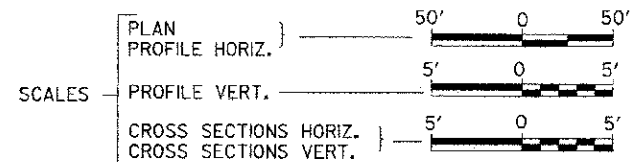
F.A.S. RTE.	SECTION	COUNTY	TOTAL SHEETS	SHEET NO.
270	13-00727-00-BR	LASALLE	13	1
FED. ROAD DIST. NO. 7		ILLINOIS	CONTRACT NO. 87556	

INDEX OF SHEETS

SHEET NO.	DESCRIPTION
1.	COVER SHEET
2.	GENERAL NOTES, DETAILS, TYPICAL SECTIONS
3.	SUMMARY OF QUANTITIES, SCHEDULES OF QUANTITIES
4.	TRAFFIC CONTROL PLAN
5.	EROSION CONTROL PLAN
6.	PLAN AND PROFILE
7.-10.	STRUCTURE PLANS AND SOIL BORING LOGS
11.-13.	CROSS SECTIONS

REQUIRED HIGHWAY STANDARDS

000001-06	STANDARD SYMBOLS, ABBREVIATIONS AND PATTERNS
280001-07	TEMPORARY EROSION CONTROL SYSTEMS
515001-03	NAME PLATE FOR BRIDGES
602301-03	INLET, TYPE A
604036-02	GRATE, TYPE 8
701901-02	TRAFFIC CONTROL DEVICES
780001-03	TYPICAL PAVEMENT MARKINGS
BLR 21-9	TYPICAL APPLICATION OF TRAFFIC CONTROL DEVICES FOR CONSTRUCTION ON RURAL LOCAL HIGHWAYS



EXISTING STRUCTURE SN 050-3028
 SINGLE SPAN REINFORCED CONCRETE SLAB
 SUPERSTRUCTURE WITH CONCRETE RAIL ON
 CONCRETE CLOSED ABUTMENTS,
 ±26'-0" BK TO BK AND ±28'-6" O TO O DECK,
 NO SKEW (TO BE REMOVED)

UTILITY COMPANIES

MENDOTA WATER & SEWER DEPARTMENT
 MENDOTA, ILLINOIS

COMCAST
 MOLINE, ILLINOIS

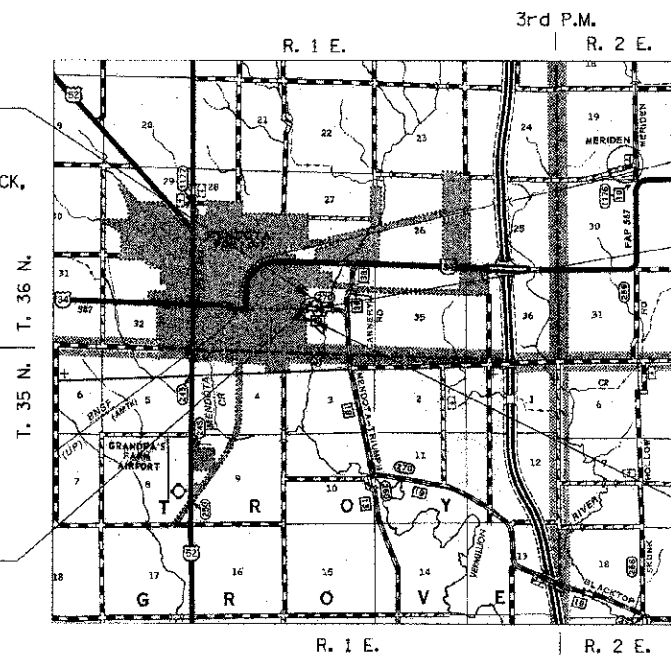
NICOR
 OTTAWA, ILLINOIS

COMMONWEALTH EDISON CO.
 JOLIET, ILLINOIS

FRONTIER COMMUNICATIONS
 SYCAMORE, ILLINOIS

J.U.L.I.E.
 JOINT UTILITY LOCATION INFORMATION FOR EXCAVATION
 1-800-892-0123
 OR 811

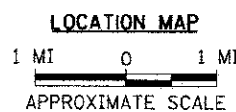
CONTRACT NO. 87556



SECTION 13-00727-00-BR
 BEGINS
 STATION 19+00.00

SECTION 13-00727-00-BR
 ENDS
 STATION 21+00.00

PROPOSED STRUCTURE SN 050-3599
 TRIPLE 12'x6' REINFORCED CONCRETE
 BOX CULVERT, 55'-11" O TO O HEADWALLS
 15° SKEW RT AH

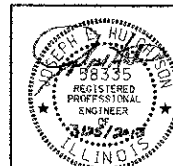


NET LENGTH OF PROJECT = 200.00 FEET = 0.038 MILES
 DESIGN CLASSIFICATION: MAJOR COLLECTOR (NON-URBAN)
 DESIGN ADT: 1575 (33)
 DESIGN SPEED: 50 MPH

Hutchison Engineering, Inc.
 JACKSONVILLE-SHOREWOOD-PEORIA

2013

JOB#3283



4-8-2013
 SIGNATURE

ENGINEERS SEAL

PLANS DESIGNED IN ACCORDANCE WITH BUREAU
 OF LOCAL ROADS AND STREETS MANUAL GUIDELINES
 FOR TWO LANE RURAL COLLECTORS - RECONSTRUCTION

APPROVED April 4 2013

Charmaine J. Keiser
 LA SALLE COUNTY ENGINEER

PASSED 4-8 2013

Don R. E...
 DISTRICT THREE ENGINEER OF
 LOCAL ROADS & STREETS

Released For
 Bid Based on
 Limited Review 4-8 2013

Paul D. Locton
 DEPUTY DIRECTOR OF HIGHWAYS,
 REGION TWO ENGINEER

STATE OF ILLINOIS
 DEPARTMENT OF TRANSPORTATION

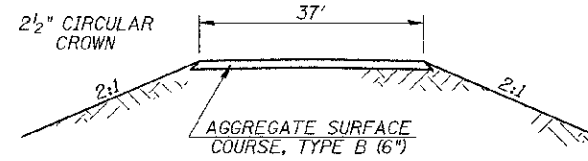
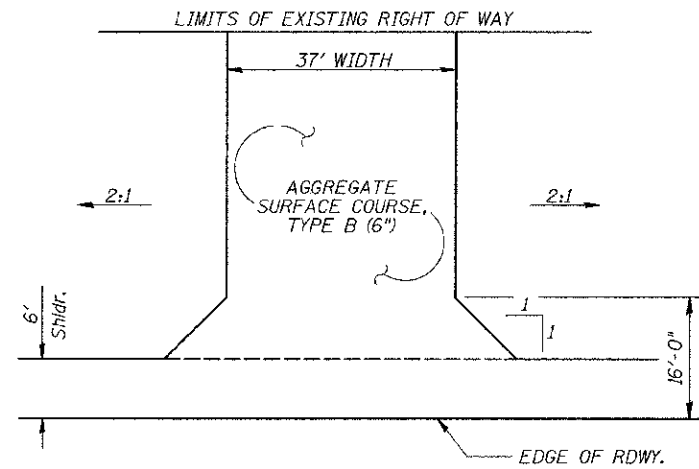
HOT-MIX ASPHALT MIXTURE REQUIREMENTS

	HMA BINDER	HMA SURFACE
PG GRADE	PG 64-22	PG 64-22
DESIGN AIR VOIDS	4% @ N50	4% @ N50
MIXTURE COMPOSITION	IL-19.0	IL-9.5
FRICTION AGGREGATE		MIXTURE C
DENSITY TEST METHOD	CORES	CORES

- * MATERIAL SHALL BE COMPACTED TO 93.0-97.4 PERCENT OF THE MAXIMUM THEORETICAL DENSITY, EXCEPT THAT WHEN PLACED AS FIRST LIFT ON AN UNIMPROVED SUBGRADE THE MINIMUM PERCENT COMPACTION SHALL BE 92.0 PERCENT. THE MAXIMUM THEORETICAL DENSITY SHALL BE DETERMINED FROM THE MOVING AVERAGE AS SPECIFIED IN THE QC/OA SPECIFICATION.
- ** WHEN MORE THAN 20% RAP IS USED, A SOFTER ASPHALT BINDER (PG 58-22) MAY BE REQUIRED AS DETERMINED BY THE ENGINEER.

**STRUCTURAL DESIGN INFORMATION
COUNTY HIGHWAY 19**

ROAD CLASSIFICATION: CLASS III 80,000 lb./20 YEAR DESIGN
 STRUCTURAL DESIGN TRAFFIC:
 PV = 1,312 SU = 104 MU = 75
 PERCENT OF STRUCTURAL DESIGN TRAFFIC IN DESIGN LANE:
 P = 88% S = 7% M = 5%
 MINIMUM SUBGRADE SUPPORT RATING: FAIR
 FLEXIBLE PAVEMENT DESIGN: MINIMUM IF = 0.40
 ASPHALT PAVEMENT THICKNESS: 7"
 SUB-BASE GRANULAR MATERIAL, TYPE A: 12"



FIELD/PRIVATE ENTRANCE
STA 20+39 LT

*** THE PROPOSED PAVEMENT STRUCTURE SHOWN SHALL BE PLACED IN THE AREA ABOVE THE EXCAVATION FOR CONSTRUCTION OF THE PROPOSED BOX CULVERT. THE PROPOSED PAVEMENT FROM THIS AREA TO THE PROJECT LIMITS SHALL BE HMA PAVEMENT PLACED OVER THE EXISTING HMA PAVEMENT TO THE PROPOSED PROFILE GRADE LINE WITH BUTT JOINTS AS DETAILED.

GENERAL NOTES

THE REMOVAL OF EXISTING ASPHALT SURFACE AND GRAVEL OR CRUSHED STONE BASE COURSE WHICH MAY BE NECESSARY FOR THE CONSTRUCTION OF THE NEW STRUCTURE SHALL BE REMOVED AS STRUCTURE EXCAVATION, WHICH IS INCLUDED IN THE COST OF CONCRETE BOX CULVERTS, AND NO COMPENSATION WILL BE ALLOWED FOR ADDITIONAL LABOR OR EQUIPMENT REQUIRED.

ALL WASTE OR UNDESIRABLE MATERIAL AS IDENTIFIED BY THE ENGINEER SHALL BE DISPOSED OF OUTSIDE THE LIMITS OF THE RIGHT OF WAY AT THE CONTRACTOR'S EXPENSE.

ALL EXISTING PRIVATELY OWNED UTILITIES REQUIRING ADJUSTMENT WILL BE MADE BY THE UTILITY COMPANY INVOLVED. WHERE NO PROVISIONS HAVE BEEN MADE FOR ADJUSTMENTS ON THE PLANS, NO ADDITIONAL COMPENSATION WILL BE ALLOWED DUE TO DELAYS OR INCONVENIENCES CAUSED BY THE SAID UTILITY ADJUSTMENTS.

THE PROFILE GRADE ELEVATIONS SHOWN ON THE PLAN AND PROFILE SHEETS AND IN THE STATION CROSS SECTIONS ARE TO THE TOP OF THE FINISHED SURFACE.

ALL EXISTING DRAINAGE STRUCTURES NOT BEING REMOVED BY THE CONTRACTOR THAT ARE DAMAGED DURING CONSTRUCTION SHALL BE REPLACED AT THE CONTRACTOR'S EXPENSE.

ANY REFERENCE TO STANDARDS THROUGHOUT THE PLANS SHALL BE INTERPRETED TO BE THE LATEST STANDARDS OF THE ILLINOIS DEPARTMENT OF TRANSPORTATION

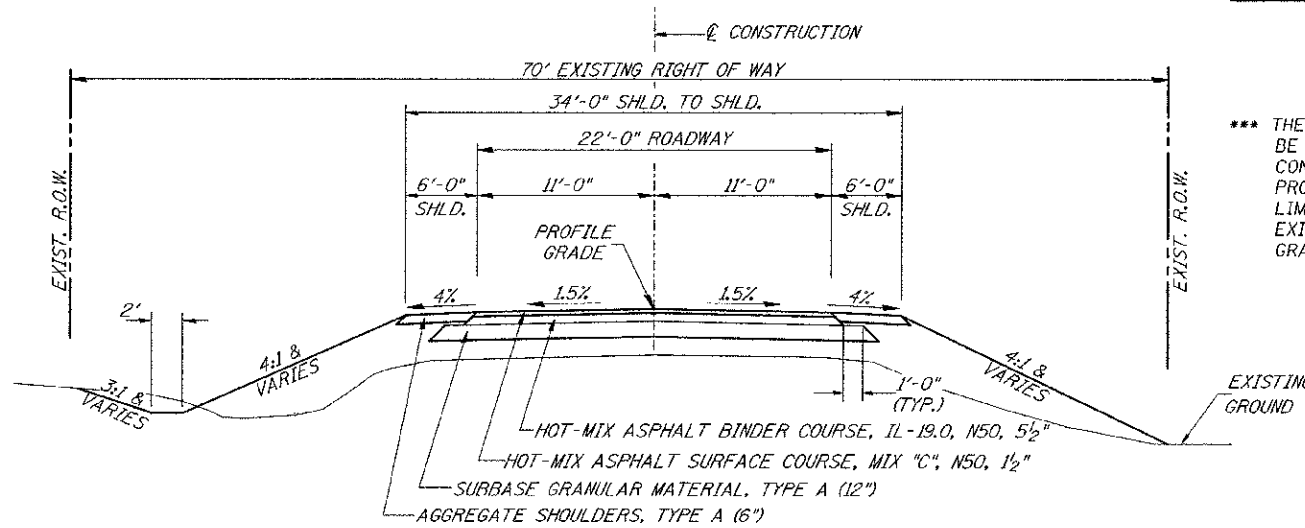
THE LOCATION OF UNDERGROUND UTILITIES SHOWN ON THE PLANS REPRESENTS THE BEST KNOWLEDGE OF THE COUNTY. IT SHALL BE THE CONTRACTOR'S RESPONSIBILITY TO VERIFY LOCATIONS OF UNDERGROUND INSTALLATIONS BEFORE STARTING CONSTRUCTION OPERATIONS. THE CONTRACTOR SHALL INDEMNIFY THE COUNTY, ITS OFFICERS AND EMPLOYEES AGAINST ALL CLAIMS DUE TO DAMAGE TO CORPORATE OR PRIVATE PROPERTY RESULTING FROM HIS CONSTRUCTION OPERATIONS AS DESCRIBED IN ARTICLES 107.20 AND 107.26 OF THE STANDARD SPECIFICATIONS.

THE CONTRACTOR MAY BE REQUIRED TO CONDUCT SOME OF HIS GRADING AND TRENCHING OPERATIONS AROUND TRANSMISSION POLES AND UNDER TRANSMISSION LINES. THE ADDED COST OF SO DOING SHALL BE INCLUDED IN THE COST OF EARTH EXCAVATION.

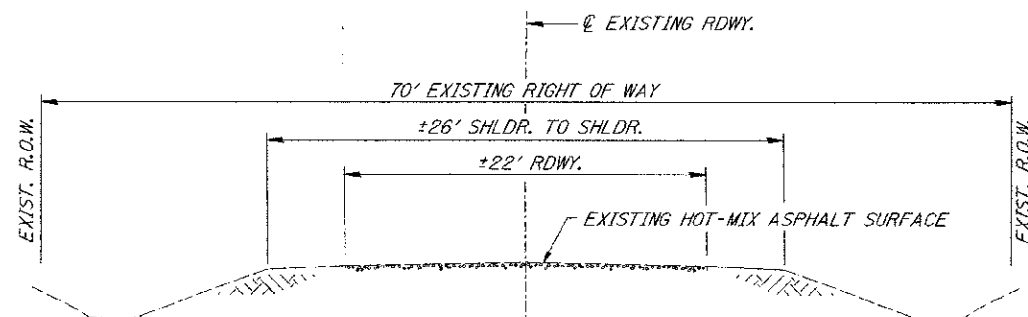
WHERE SECTION OR SUBSECTION MONUMENTS ARE ENCOUNTERED, THE ENGINEER SHALL BE NOTIFIED BEFORE SUCH MONUMENTS ARE REMOVED. THE CONTRACTOR SHALL PROTECT AND PRESERVE PROPERTY MARKERS UNTIL THE OWNER, AN AUTHORIZED SURVEYOR, OR AGENT, HAS WITNESSED OR OTHERWISE REFERENCED THEIR LOCATION.

THE FINAL SURFACE OF ALL DISTURBED/EMBANKMENT AREAS SHALL BE SEEDED. THE TOP 4 INCHES OF THE SEEDED AREAS SHALL BE COHESIVE VEGETATION SUSTAINING SOIL SUBJECT TO THE APPROVAL OF THE ENGINEER. THE COST OF SHAPING THE SLOPES AND PROVIDING VEGETATION SUSTAINING SOIL WILL NOT BE PAID FOR SEPARATELY BUT SHALL BE INCLUDED IN THE COST OF EARTH EXCAVATION. TOPSOIL MAY BE STRIPPED AND STOCKPILED FROM THE SITE OR HAULED IN FROM AN ALTERNATE LOCATION AS APPROVED BY THE ENGINEER.

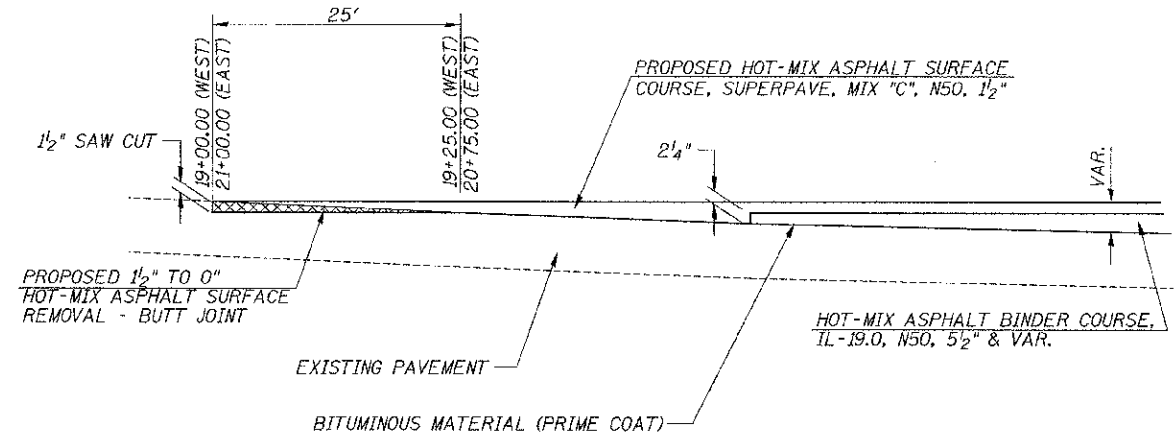
ALL ELEVATIONS SHOWN REFER TO AN U.S.G.S. MEAN SEA LEVEL DATUM.



PROPOSED TYPICAL SECTION ***
STA. 19+00.00 TO STA. 21+00.00
EXCEPT TRANSITIONS



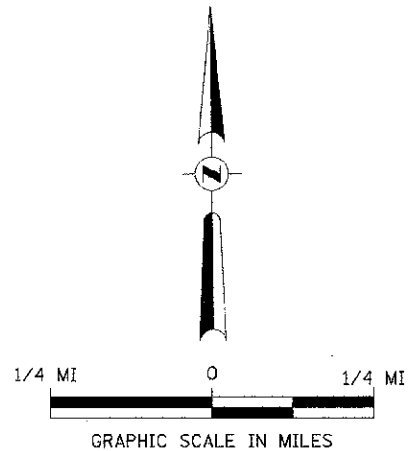
EXISTING TYPICAL SECTION



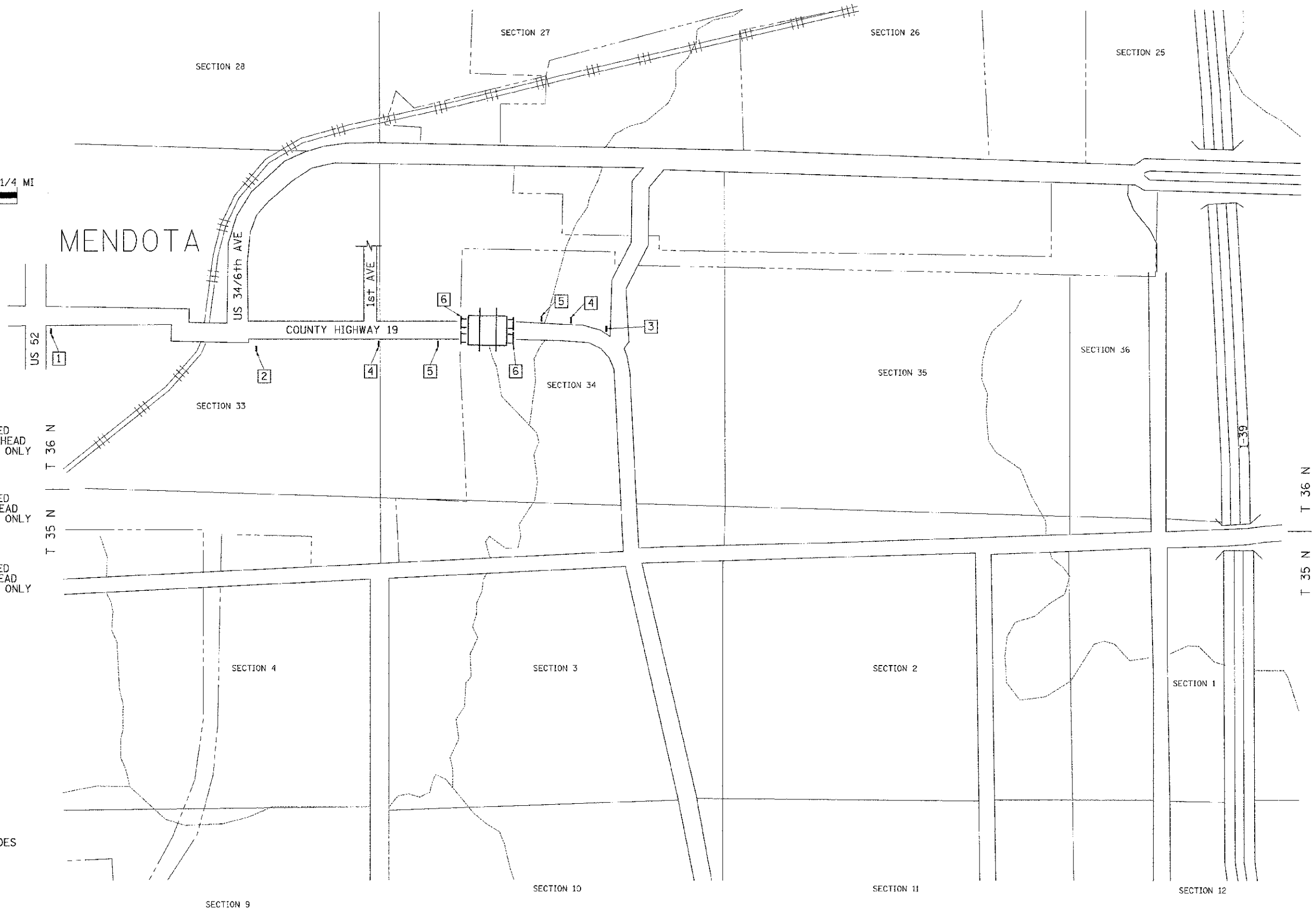
BUTT JOINT DETAIL

FILE NAME: V:\Brdg\3283-LeSalle\32831001.dgn	USER NAME: ethomas	DESIGNED: -	REVISED: -	<p>LASALLE COUNTY COUNTY HIGHWAY 19 OVER FIRST CREEK</p>	<p>GENERAL NOTES, DETAILS, TYPICAL SECTIONS</p>	F.A.S. RTE. 270	SECTION 13-00727-00-BR	COUNTY LASALLE	TOTAL SHEETS 13	SHEET NO. 2	
PLOT SCALE: 1/8" = 1'-0"	CHECKED: -	REVISED: -	SCALE: NONE			SHEET NO. 1 OF 1 SHEETS	STA. 19+00.00 TO STA. 21+00.00	FED. ROAD DIST. NO. 7	ILLINOIS	FED. AID PROJECT BRS-0270102	CONTRACT NO. 87556
PLOT DATE: 3/22/2013	DATE: -	REVISED: -									

R 1 E, 3rd PM



MENDOTA



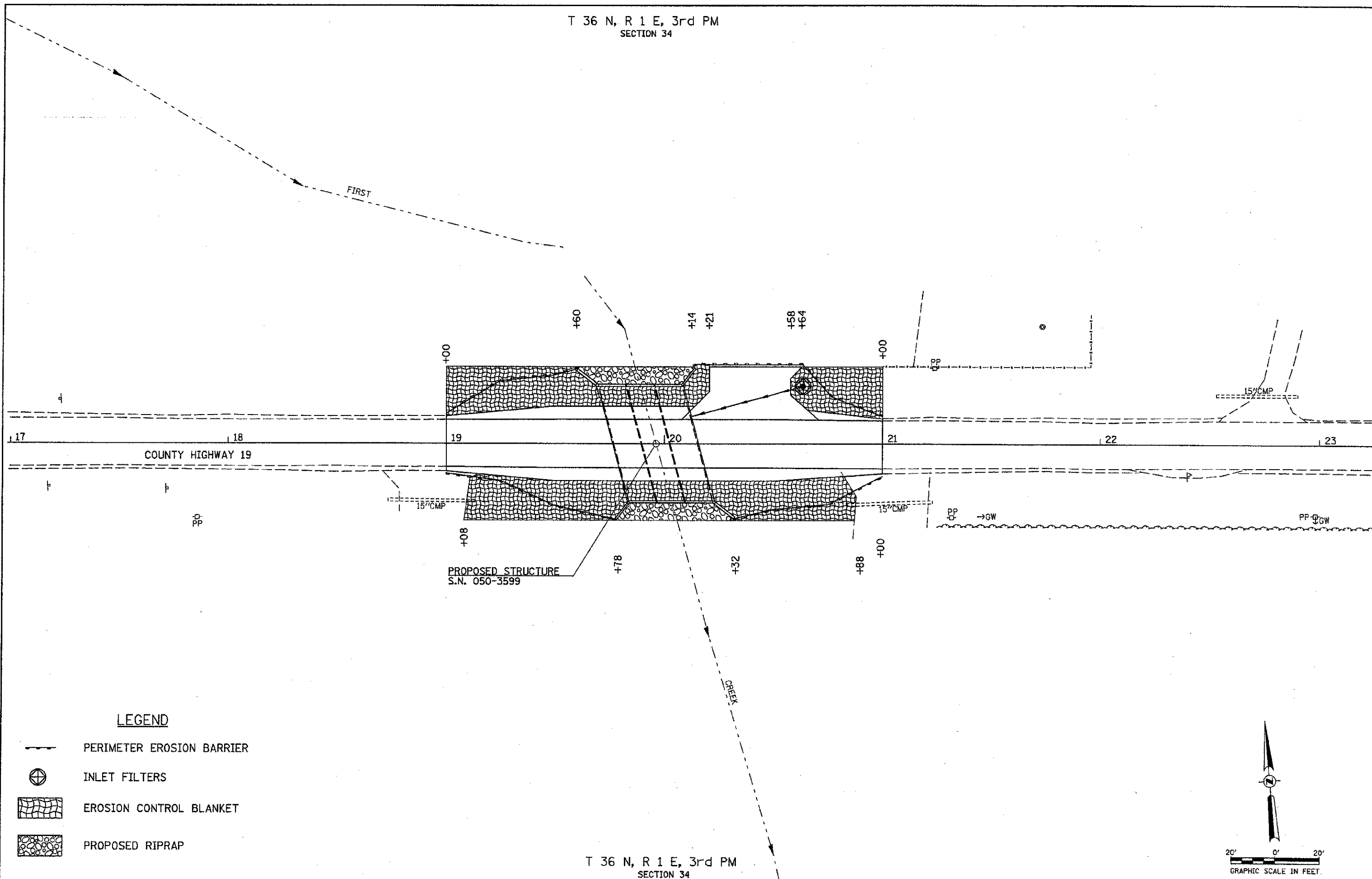
- 1 ROAD CLOSED 1 1/4 MILES AHEAD LOCAL TRAFFIC ONLY
R11-3
- 2 ROAD CLOSED 3/4 MILE AHEAD LOCAL TRAFFIC ONLY
R11-3
- 3 ROAD CLOSED 1/2 MILE AHEAD LOCAL TRAFFIC ONLY
R11-3
- 4 ROAD CLOSED AHEAD
W20-3
- 5 ROAD CLOSED 500 FT
W20-3
- 6 TYPE III BARRICADES

SEE STANDARD BLR 21 AND SPECIAL PROVISIONS





R 1 E, 3rd PM

FILE NAME = W:\Bridge\3283-1\05\1\3283-001.dgn	USER NAME = ctvcrnao	DESIGNED -	REVISED -	LASALLE COUNTY COUNTY HIGHWAY 19 OVER FIRST CREEK	TRAFFIC CONTROL PLAN		F.A.S. RTE. 270	SECTION 13-00727-00-BR	COUNTY LASALLE	TOTAL SHEETS 13	SHEET NO. 4
PLOT SCALE = 1/8" = 1'	PLOT DATE = 3/22/2013	DRAWN -	REVISED -		SCALE: NONE	SHEET NO. 1 OF 1 SHEETS	STA. 19+00.00 TO STA. 21+00.00	CONTRACT NO. 87556		FED. ROAD DIST. NO. 7 ILLINOIS	
		CHECKED -	REVISED -				FED. AID PROJECT BRS-027002				
		DATE -	REVISED -								

T 36 N, R 1 E, 3rd PM
SECTION 34

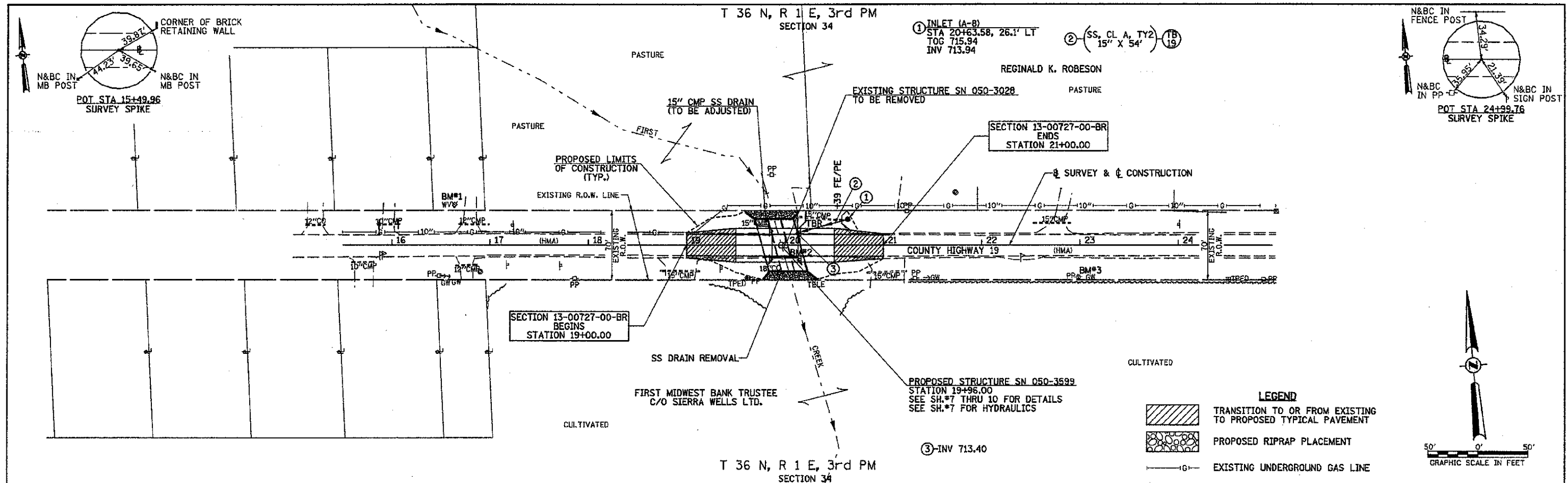


LEGEND

-  PERIMETER EROSION BARRIER
-  INLET FILTERS
-  EROSION CONTROL BLANKET
-  PROPOSED RIPRAP

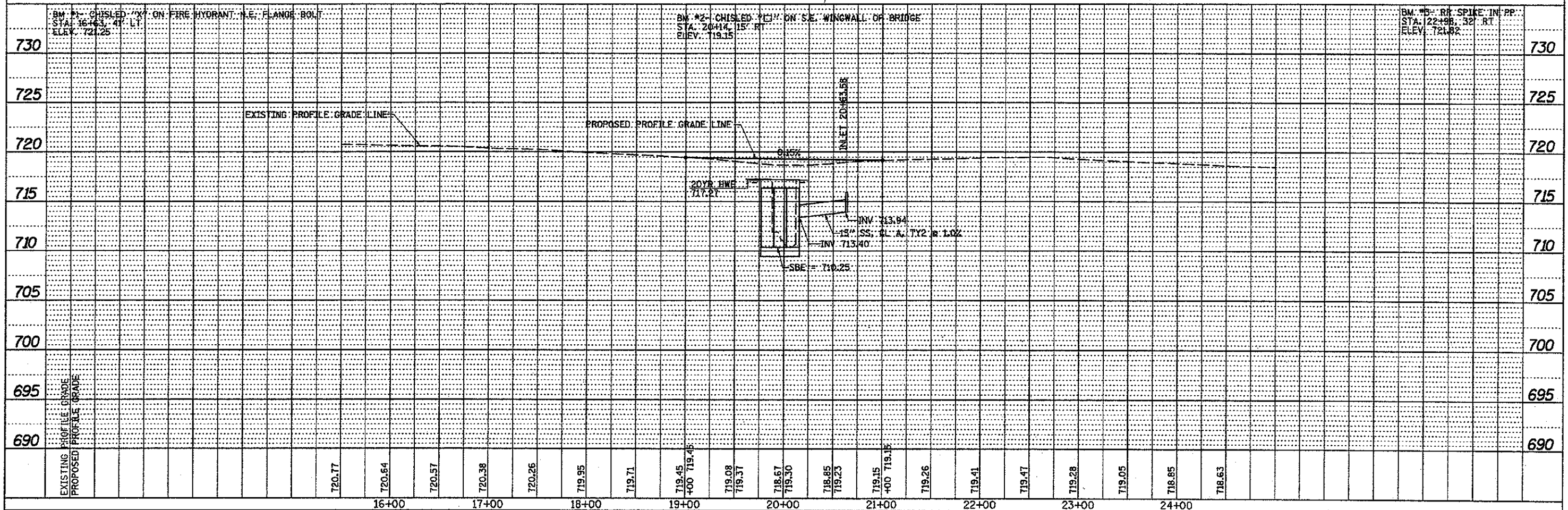
T 36 N, R 1 E, 3rd PM
SECTION 34

FILE NAME = V:\Bridges\3283-Lasalle\32838201\final.dgn	USER NAME = jhutchison	DESIGNED -	REVISED -	LASALLE COUNTY COUNTY HIGHWAY 19 OVER FIRST CREEK	EROSION CONTROL PLAN	F.A.S. R.T.E.	SECTION	COUNTY	TOTAL SHEETS	SHEET NO.	
	PLOT SCALE = 1/8" = 20' / IN.	DRAWN -	REVISED -			270	13-00727-00-BR	LASALLE	13	5	
	PLOT DATE = 5/1/2013	CHECKED -	REVISED -			SCALE: 1" = 20' SHEET NO. 1 OF 1 SHEETS STA. 19+00.00 TO STA. 21+00.00		CONTRACT NO. 87556			
		DATE -	REVISED -			FED. ROAD DIST. NO. 7 (ILLINOIS) FED. AID PROJECT BR5-0270002					



DATE	
BY	
REVISIONS	
1. DATE	
2. BY	
3. DESCRIPTION	
PLAN	
NOTE BOOK NO.	
PROJECT NAME	

DATE	
BY	
REVISIONS	
1. DATE	
2. BY	
3. DESCRIPTION	
PROFILE	
NOTE BOOK NO.	
PROJECT NAME	



FILE NAME = V:\Brdge\3283-Lasalle\3283p881\1.mxd	USER NAME = jhutchison	DESIGNED -	REVISED -	LASALLE COUNTY COUNTY HIGHWAY 19 OVER FIRST CREEK	PLAN AND PROFILE	F.A.S. RTE.	SECTION	COUNTY	TOTAL SHEETS	SHEET NO.	
SHT_PLN.PDF	PLOT SCALE = 1/8"=1'-0"	DRAWN -	REVISED -			270	13-00727-00-BR	LASALLE	13	6	
	PLOT DATE = 5/1/2013	CHECKED -	REVISED -			SCALE: 1"=50'		SHEET 1 OF 1 SHEETS		STA. 19+00.00 TO STA. 21+00.00	
		DATE -	REVISED -			CONTRACT NO. 87556		FED. ROAD DIST. NO. 7 (ILLINOIS) FED. AID PROJECT BRS-0270102			

B.M.: Chisled "X" on Fire Hydrant
N.E. Flange Bolt
Sta. 16+63, 41' Lt
Elev. 721.25

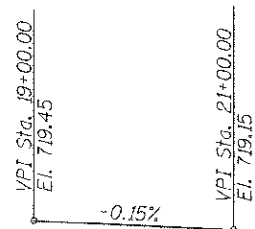
B.M.: RR Spike in Power Pole
Sta. 22+98, 32' Rt
Elev. 721.82

Existing Structure:
Single span reinforced concrete slab superstructure on concrete closed abutments. The structure is ±26'-0" back to back of abutments, ±28'-6" cut to out of deck, and is not skewed.
Str. No. 050-3028

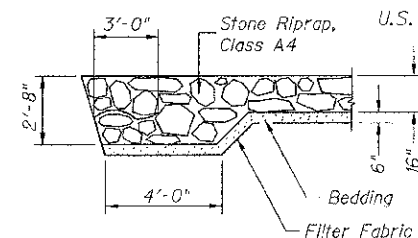
Salvage: None

Road to be closed to traffic during construction.

* Unsuitable Material Removal and Replacement with P.G.E. Limits are 2' outside the bottom slab and extends the length of the barrel.



PROFILE GRADE



SECTION A-A

FIRST CREEK
BUILT 201 BY
LASALLE COUNTY
SEC. 13-00727-00-BR
C.H. 19 STATION 19+96.00
F.A. PROJ. BRS-0270(102)
STR. NO. 050-3599 LOADING HL-93

NAME PLATE

Locate Name Plate at South Headwall
S.W. Corner of Culvert (See Std. 515001)

WATERWAY INFORMATION

Drainage Area = 2.63 Sq. Mi.		Low Grade Elev. = 719.15 @ Sta. 21+00.00							
Flood	Freq. Yr.	Q C.F.S.	Opening Sq. Ft. Exist.	Prop.	Nat. H.W.E.	Head - Ft. Exist.	Prop.	Headwater El. Exist.	Prop.
Design	20	1,051	149	216	717.27	0.47	0.11	717.74	717.38
Base	100	1,590	149	216	717.82	1.80	0.74	719.62	718.56

DESIGN SPECIFICATIONS

2012 AASHTO LRFD Bridge Design Specifications

DESIGN STRESSES

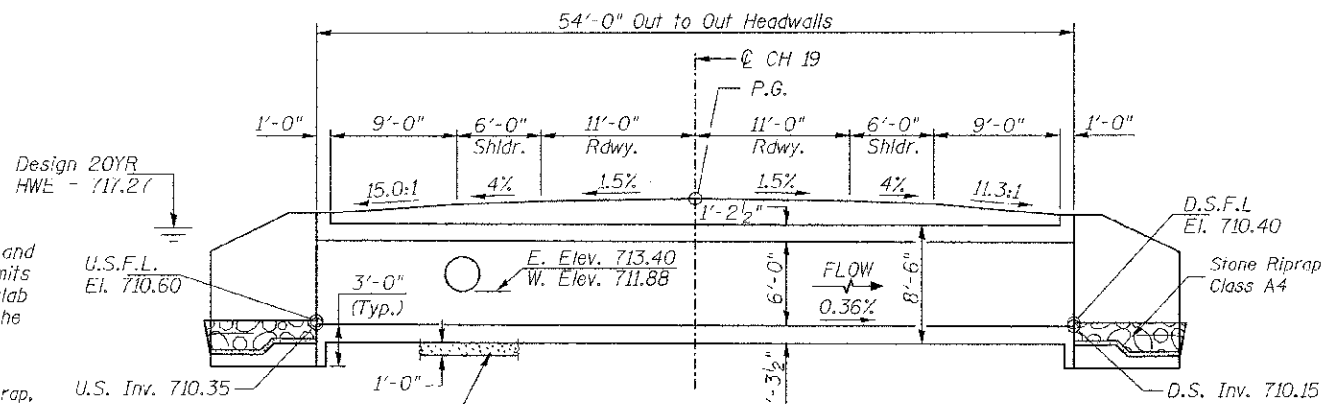
FIELD UNITS

$f'_c = 3,500$ psi
 $f_y = 60,000$ psi (Reinforcement)

LOADING HL-93

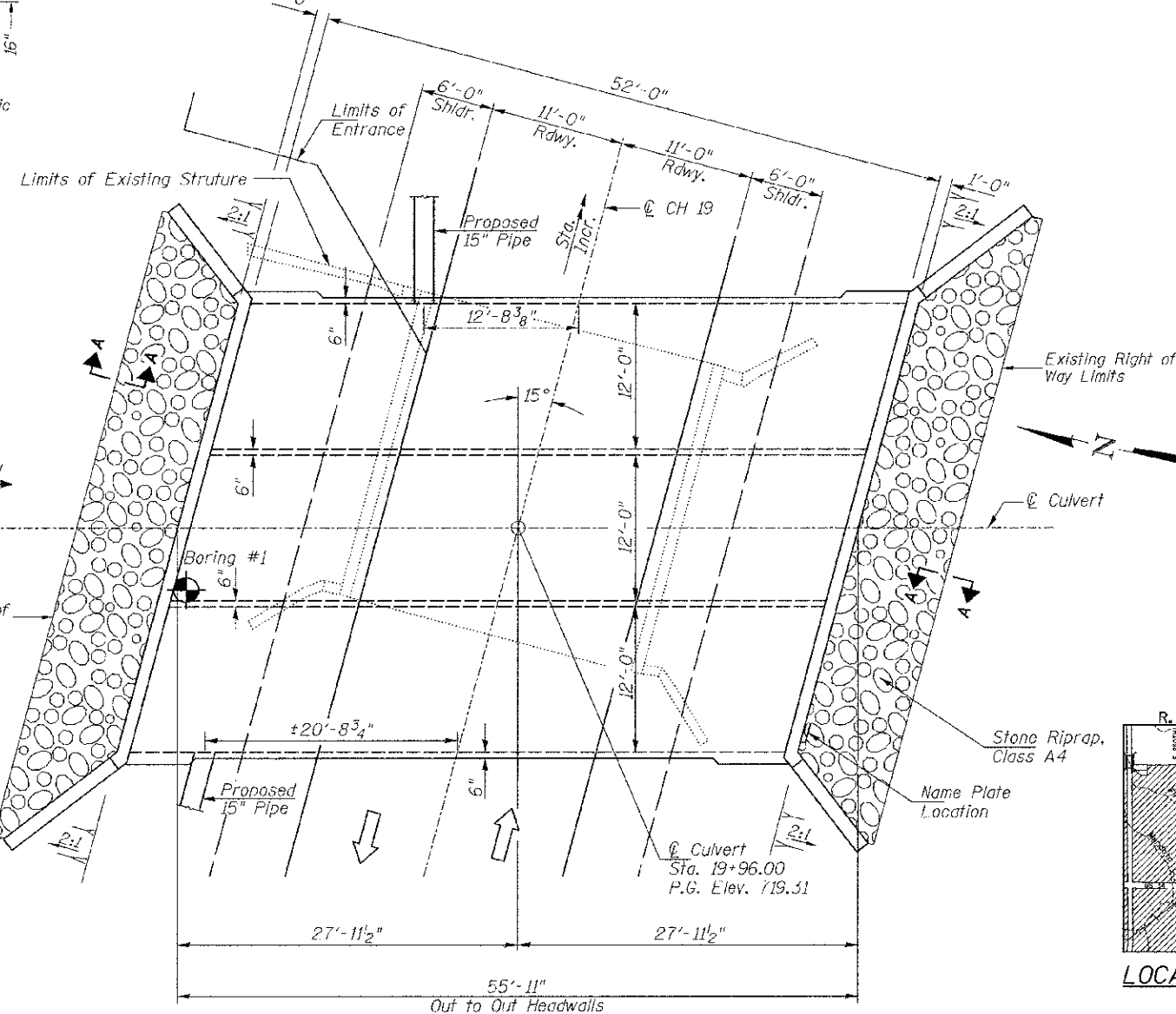
Allow 50#/sq. ft. for future wearing surface.

DESIGNED	NPH
CHECKED	CTM
DRAWN	RMD
CHECKED	NPH/CTM



LONGITUDINAL SECTION

Dimensions are at Rt.L's to C Roadway



PLAN

GENERAL NOTES

Reinforcement Bars shall conform to the requirements of ASTM A 706 Grade 60.
For backfilling and embankment see Standard Specifications.
All construction joints shall be bonded.
Exposed concrete edges shall have a 3/4" chamfer unless otherwise noted.
Precast culvert option will not be allowed.
Layout of stone riprap may be varied in the field to suit ground conditions as directed by the Engineer.
Excavation behind existing abutment walls shall be performed to balance front and back soil pressure before removing the existing superstructure.
A distance of half the length of the wingwall, but not less than 6 feet of the barrel shall be poured monolithically with the wingwall.
All excavation required for construction of the culvert in accordance with the Standard Specifications shall be included in the cost of Concrete Box Culverts.
Areas of excavation required for removal of the existing structure or construction of the new culvert shall be backfilled with Porous Granular Embankment up to the top of slab elevation. See Special Provisions for more detailed information.

TOTAL BILL OF MATERIAL

ITEM	UNIT	TOTAL
Concrete Box Culverts	CU YD	240.9
Reinforcement Bars	POUND	35,140
① Removal of Existing Structures	EACH	1
Name Plates	EACH	1
Stone Riprap, Class A4	SQ YD	85
Filter Fabric	SQ YD	85
Removal & Disposal of Unsuitable Material	CU YD	90
① Porous Granular Embankment	CU YD	315

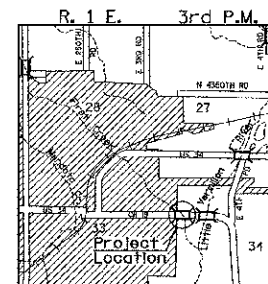
① See Special Provisions

DESIGN SCOUR TABLE

Location	Upstream	Downstream
Design Scour Elevation	710.35	710.15

I certify that to the best of my knowledge, information and belief, this bridge design is structurally adequate for the design loading shown on the plans. The design is an economical one for the style of structure and complies with requirements of the current AASHTO Standard Specification for Highway Bridges.
This design complies with all requirements of the current AASHTO Guide Specifications for Seismic Design of highway bridges.

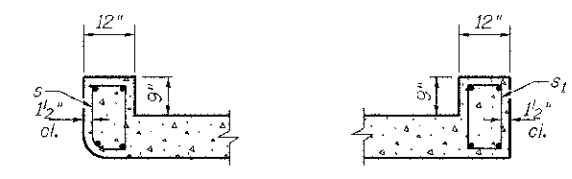
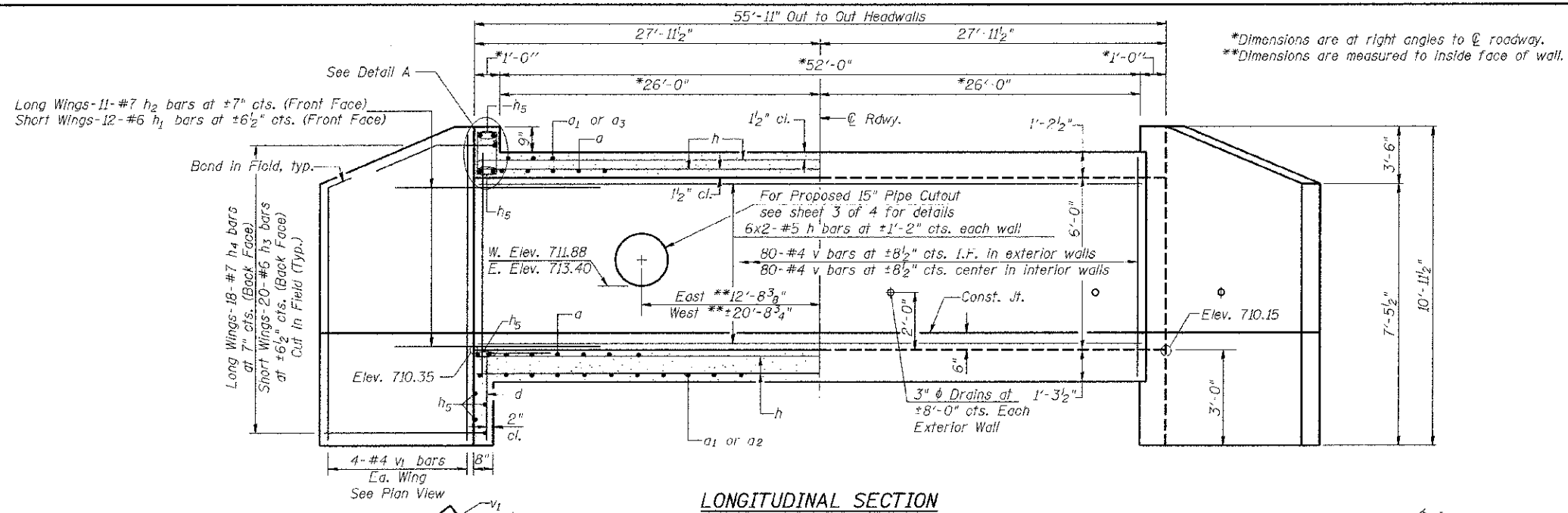
[Signature]
Illinois Structural No. 6440
Expires 11/30/2014



LOCATION SKETCH

GENERAL PLAN & ELEVATION

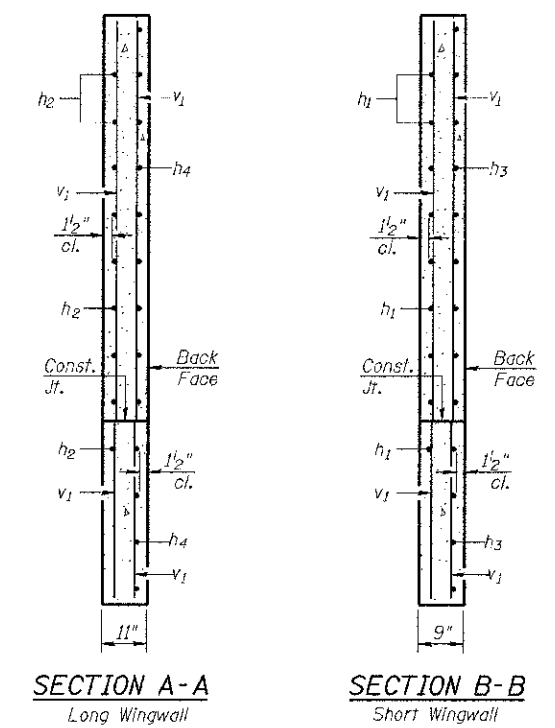
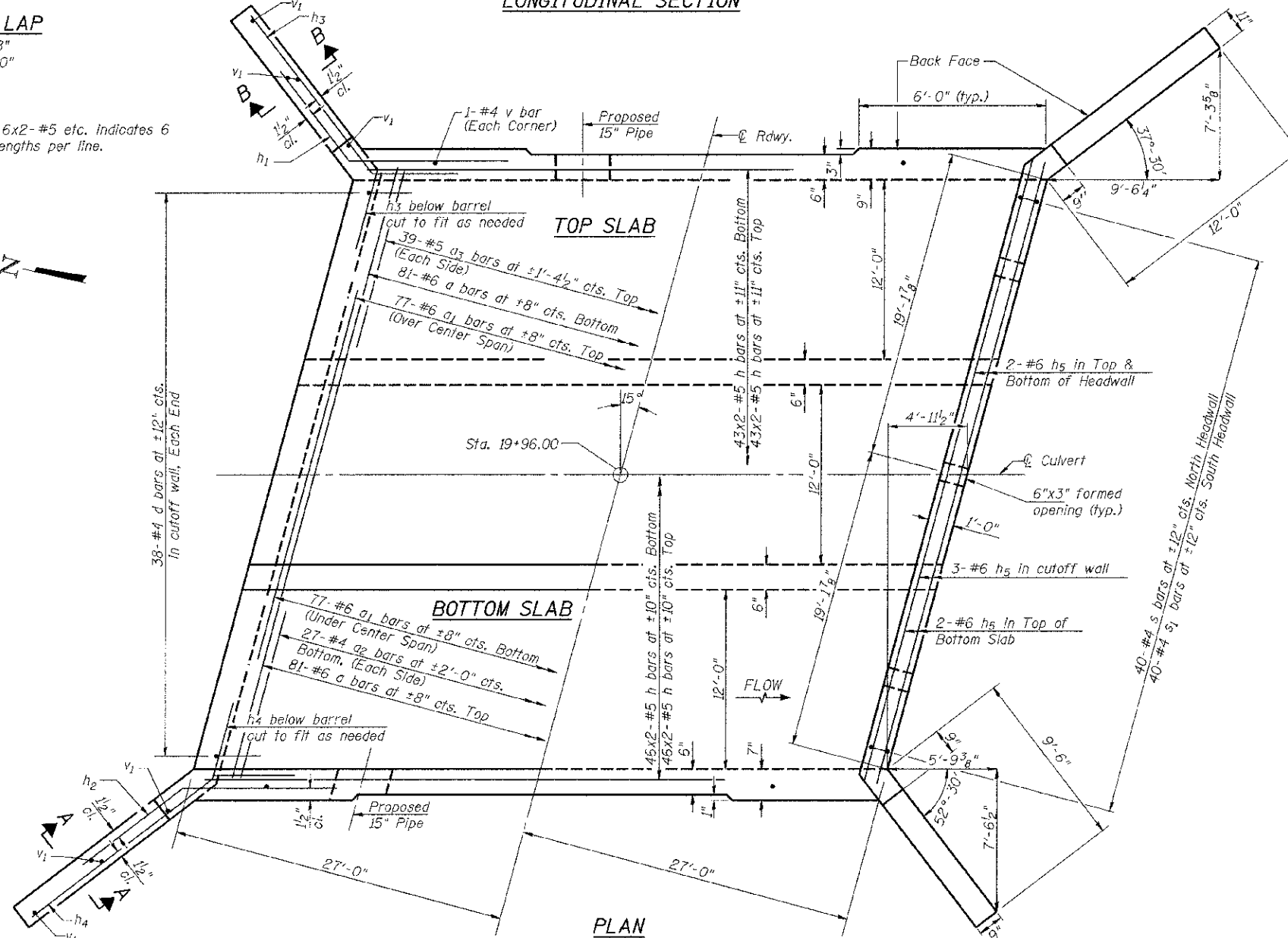
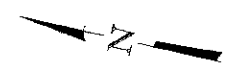
SHEET NO. 1	F.A.S. RTE. 270	SECTION 13-00727-00-BR	COUNTY LASALLE	TOTAL SHEETS 13	SHEET NO. 7
4 SHEETS	S.N. 050-3599		CONTRACT NO. 87556		
FED. ROAD DIST. NO. 7 ILLINOIS		FED. AID PROJECT BRS-0270(102)			



MIN. BAR LAP

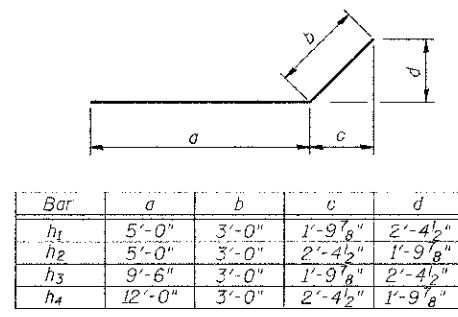
- #5 = 1'-8"
- #6 = 2'-0"

Notes:
Bars indicated thus 6x2-#5 etc. indicates 6 lines of bars with 2 lengths per line.



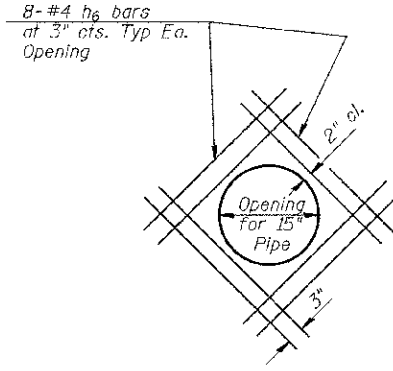
CULVERT DETAILS

SHEET NO. 2	F.A.S. RTE.	SECTION	COUNTY	TOTAL SHEETS	SHEET NO.
	270	13-00727-00-BR	LASALLE	13	8
4 SHEETS	S.N. 050-3599		CONTRACT NO. 87556		
	FED. ROAD DIST. NO. 7 ILLINOIS		FED. AID PROJECT BRS-0270(102)		

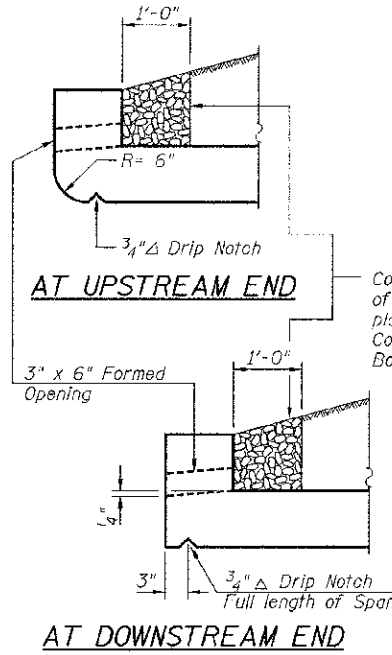


Bar	a	b	c	d
h ₁	5'-0"	3'-0"	1'-9 1/8"	2'-4 1/2"
h ₂	5'-0"	3'-0"	2'-4 1/2"	1'-9 1/8"
h ₃	9'-6"	3'-0"	1'-9 1/8"	2'-4 1/2"
h ₄	12'-0"	3'-0"	2'-4 1/2"	1'-9 1/8"

BARS h₁, h₂, h₃, & h₄

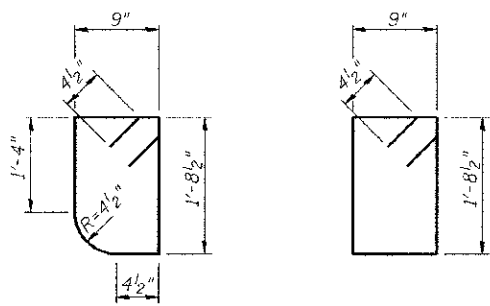


OPENING DETAIL FOR 15" PIPE CULVERTS
See Sheet 2 of 4 for location.
Cut reinforcement to miss opening.

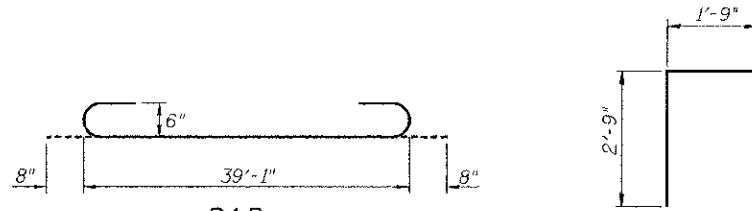


Coarse aggregate full length of both headwalls. To be placed by Grading Contractor. Cost Included with Concrete Box Culverts.

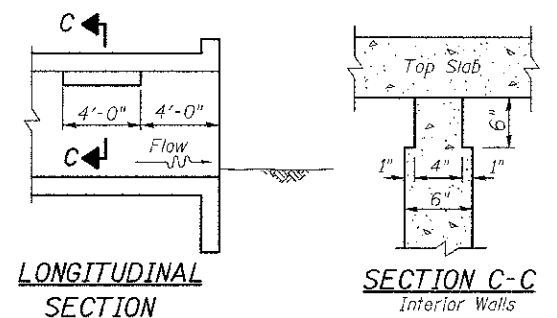
DRAIN DETAIL



BAR s **BAR s₁**



BAR a **BAR d**

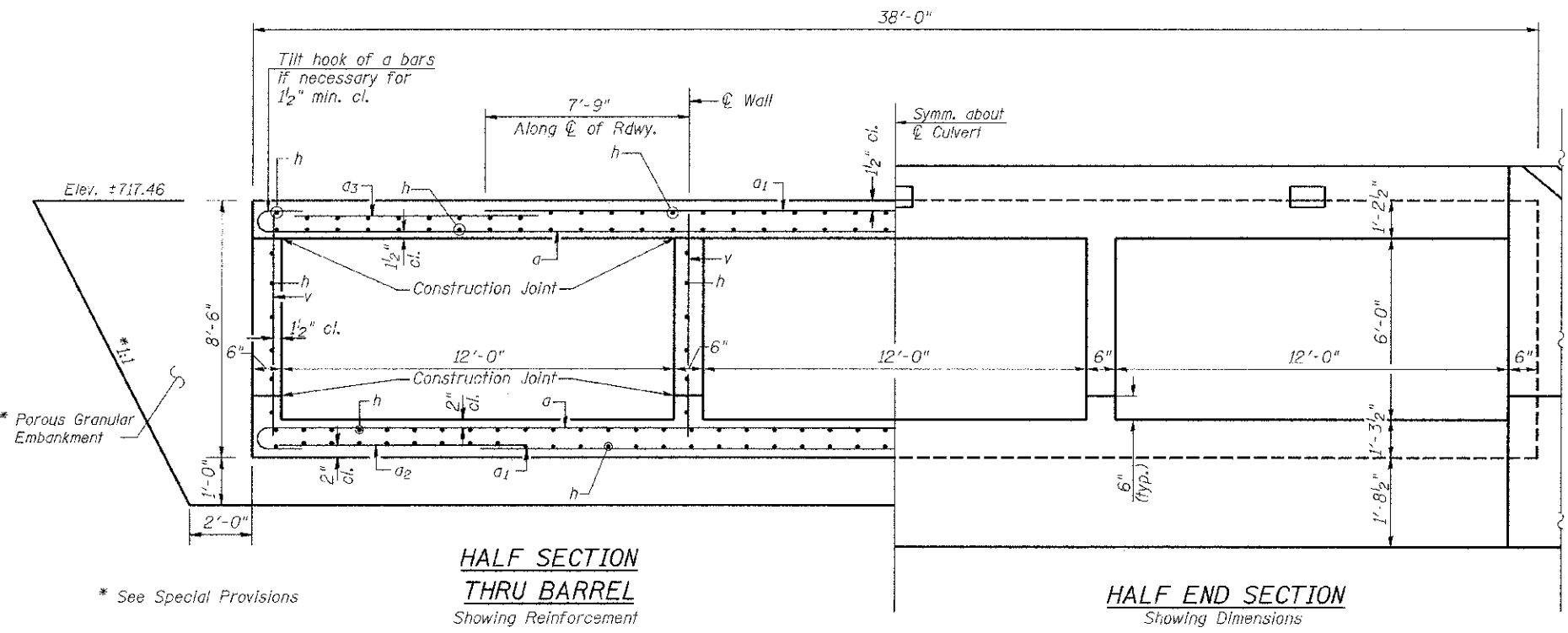


LONGITUDINAL SECTION **SECTION C-C Interior Walls**

Note: Notch by rough-finished board attached to and removed with formwork, each interior wall. (Do not chamfer)
PHOEBE NESTING SITE DETAIL
(Downstream End Only - Cost included with Concrete Box Culverts)

BILL OF MATERIAL

Bar	No.	Size	Length	Shape	
a	162	#6	40'-5"	C	
a ₁	154	#6	28'-0"	—	
a ₂	54	#4	6'-3"	—	
a ₃	78	#5	6'-7"	—	
d	76	#4	4'-6"	Γ	
h	404	#5	28'-8"	—	
h ₁	24	#6	8'-0"	—	
h ₂	22	#7	8'-0"	—	
h ₃	40	#6	12'-6"	—	
h ₄	36	#7	15'-0"	—	
h ₅	10	#6	38'-6"	—	
h ₆	16	#4	3'-6"	—	
s	40	#4	5'-6"	⌋	
s ₁	40	#4	5'-8"	⌋	
v	324	#4	8'-2"	—	
v ₁	16	#4	10'-8"	—	
Concrete Box Culverts				CU YD	240.9
Reinforcement Bars				FOUND	35,140



HALF SECTION THRU BARREL
Showing Reinforcement

HALF END SECTION
Showing Dimensions

SHEET NO. 3	F.A.S. RTE.	SECTION	COUNTY	TOTAL SHEETS	SHEET NO.
	270	13-00727-00-BR	LASALLE	13	9
4 SHEETS	S.N. 050-3599		CONTRACT NO. 87556		
	FED. ROAD DIST. NO. 7 ILLINOIS		FED. AID PROJECT BRS-0270(102)		

CULVERT DETAILS



Midwest Testing Services, Inc.
3705 Progress Blvd.
Peru, IL 61354

BORING LOG

Sheet 1 of 2

Phone: 815-223-6696
Fax: 815-223-6659
e-mail: mts37@comcast.net

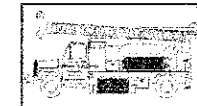
Client: Hutchison Engineering, Inc.
Project Name: Section 13-00727-00-BR
Project Site: CH-19 Over First Creek
LaSalle County, Illinois

Boring No. B-1
Surface Elev. 715.20
Auger Depth 36' Rotary Depth NA
Start Date 02/19/13 Finish Date 02/19/13

Location: 25' Left of Station 19+82

(DEPTH) ELEV.	DESCRIPTION OF MATERIALS	Graphic Log	Depth in feet	SAMPLES						DRILLED BY	REMARKS
				Sample No.	Sample Type	Qu (TSF)	N Value (Blows)	Bulge / Shear	Moisture (%)		
715.20										Randy Safranski CME-55	
714.20	Stiff Brown Silty Clay		1								
713.20			2								
712.20			3	1	SS	1.4	8	B	22		
711.20	Very Stiff Brownish Gray Clay Till		4								
710.20			5								
709.20			6	2	SS	2.1	10	B	20		
708.20			7								
707.20			8	3	SS	2.5	14	B	18		
706.20	Very Stiff Gray Clay Till With Sand Seams		9								
705.20			10								
704.20			11	4	SS	2.0	11	B	19		
703.20			12								
702.20			13	5	SS	2.3	13	B	18		
701.20			14								
700.20			15								
699.20			16	6	SS	2.1	11	B	20		
698.20	Very Stiff Gray Clay Till		17								
697.20			18	7	SS	2.3	12	B	16		
696.20			19								
695.20			20	8	SS	2.1	12	B	18		

Groundwater Data: Static water at elevation 700.5
Comments:



Midwest Testing Services, Inc.
3705 Progress Blvd.
Peru, IL 61354

BORING LOG

Sheet 2 of 2

Phone: 815-223-6696
Fax: 815-223-6659
e-mail: mts37@comcast.net

Client: Hutchison Engineering, Inc.
Project Name: Section 13-00727-00-BR
Project Site: CH-19 Over First Creek
LaSalle County, Illinois

Boring No. B-1
Surface Elev. 715.20
Auger Depth 36' Rotary Depth NA
Start Date 02/19/13 Finish Date 02/19/13

Location: 25' Left of Station 19+82

(DEPTH) ELEV.	DESCRIPTION OF MATERIALS	Graphic Log	Depth in feet	SAMPLES						DRILLED BY	REMARKS
				Sample No.	Sample Type	Qu (TSF)	N Value (Blows)	Bulge / Shear	Moisture (%)		
694.20										Randy Safranski CME-55	
693.20	Stiff Gray Clay Till		22								
692.20			23	9	SS	1.8	9	B	22		
691.20			24								
690.20			25	10	SS	1.9	9	B	22		
689.20			26								
688.20	Very Stiff Gray Clay Till		27								
687.20			28	11	SS	2.0	10	B	20		
686.20			29								
685.20			30	12	SS	2.1	10	B	21		
684.20			31								
683.20	Medium Gray Fine Sand		32								
682.20			33	13	SS	---	17	---	---		
681.20			34								
680.20			35	14	SS	---	15	---	---		
679.20			36								
678.20			37								
677.20			38								
676.20			39								
675.20			40								
674.20			41								

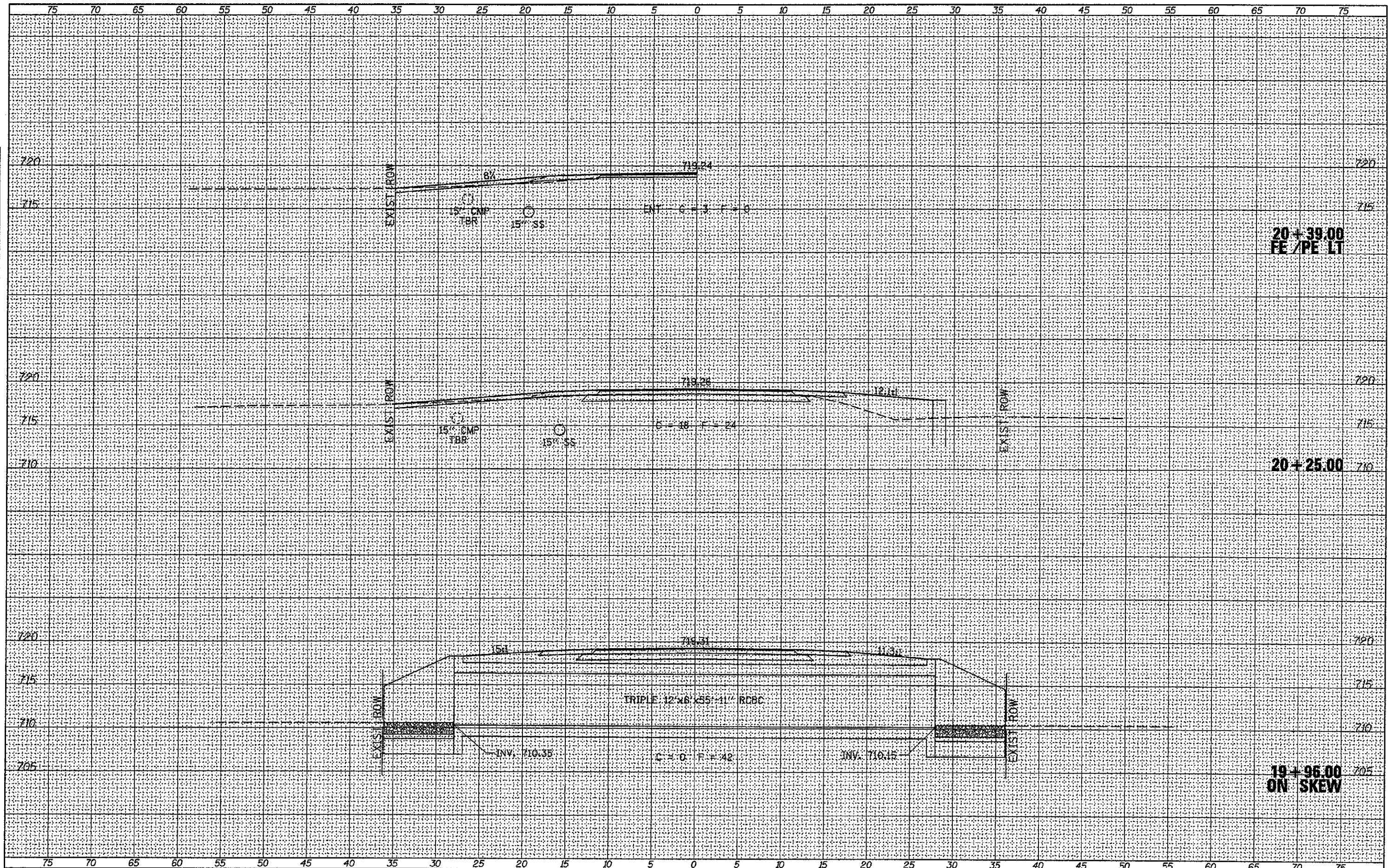
Groundwater Data: Static water at elevation 700.5
Comments:

SOIL BORING LOGS

SHEET NO. 4	F.A.S. RTE.	SECTION	COUNTY	TOTAL SHEETS	SHEET NO.
	270	13-00727-00-BR	LASALLE	13	10
4 SHEETS	S.N. 050-3599		CONTRACT NO. 87556		
FED. ROAD DIST. NO. 7 ILLINOIS			FED. AID PROJECT BRS-0270(102)		

DATE	
BY	
DESIGNED	
DRAWN	
CHECKED	
DATE	
REVISIONS	
NO.	
FINAL SURVEY	
NOTE BOOK	
NO.	
AREAS CHECKED	

DATE	
BY	
DESIGNED	
DRAWN	
CHECKED	
DATE	
REVISIONS	
NO.	
ORIGINAL SURVEY	
NOTE BOOK	
NO.	
AREAS CHECKED	



**20+39.00
FE / PE LT**

20+25.00

**19+96.00
ON SKEW**

FILE NAME -
W:\b\1dga\3283-Lasalle\3283xhstafinal.dgn

USER NAME = j_hutchison
DESIGNED -
DRAWN -
CHECKED -
DATE -

DESIGNED -
DRAWN -
CHECKED -
DATE -

REVISED -
REVISED -
REVISED -
REVISED -

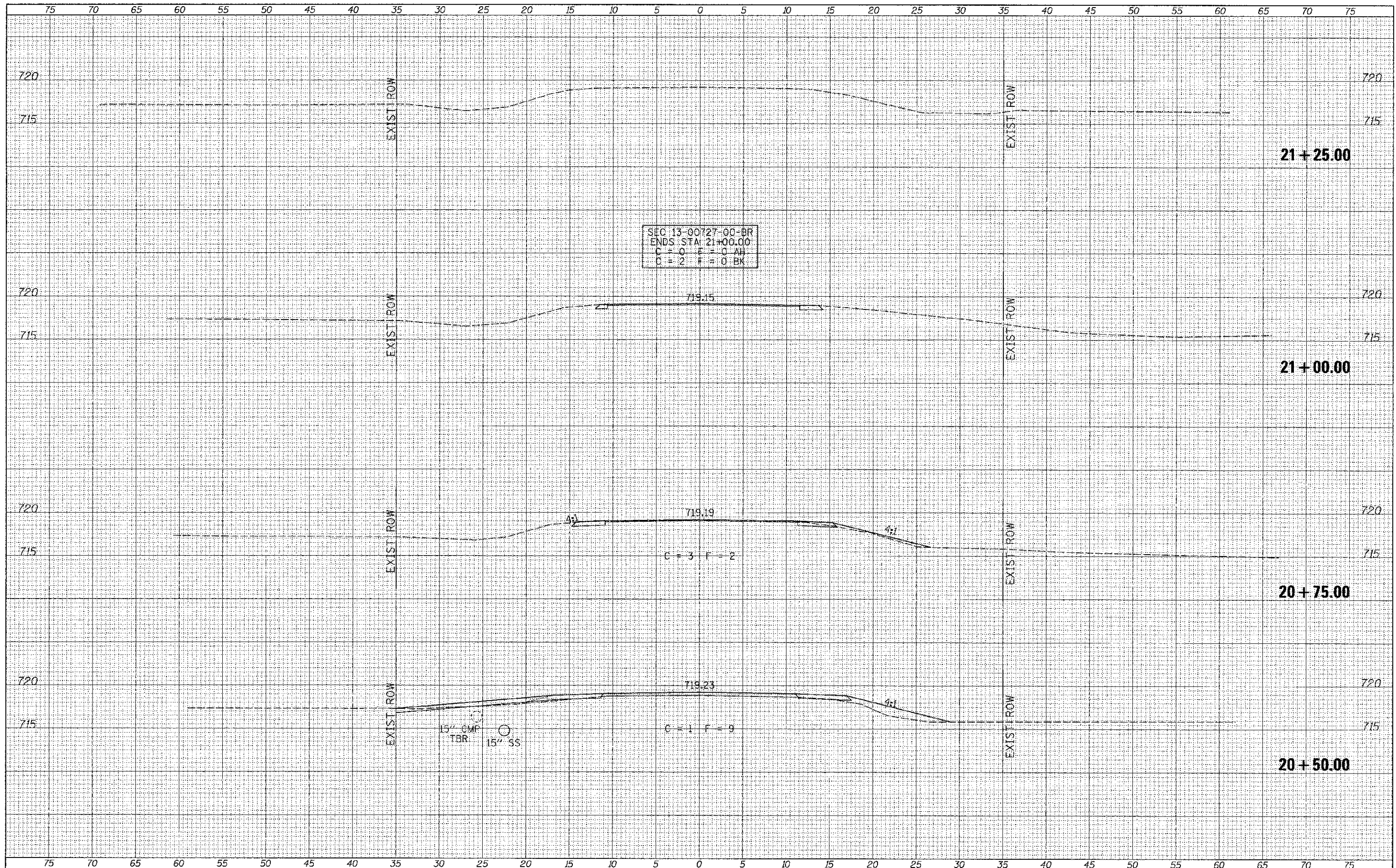
**LASALLE COUNTY
COUNTY HIGHWAY 19
OVER FIRST CREEK**

CROSS SECTIONS
SCALE: 1"=5'
SHEET 2 OF 3 SHEETS
STA. 19+96.00 TO STA. 20+39.00

F.A.S. RTE.	SECTION	COUNTY	TOTAL SHEETS	SHEET NO.
270	13-00T21-00-BR	LASALLE	13	12
			CONTRACT NO. 87556	
			FED. ROAD DIST. NO. 7 ILLINOIS	
			FED. AID PROJECT BR5-027010D	

DATE	
BY	
FINAL SURVEY	
REVISIONS	
PLOTTED	
TEMPLATE	
NOTE BOOK	
AREAS	
AREAS CHECKED	

DATE	
BY	
ORIGINAL SURVEY	
REVISIONS	
PLOTTED	
TEMPLATE	
NOTE BOOK	
AREAS	
AREAS CHECKED	



SEC 13-00727-00-BR
 ENDS STA: 21+00.00
 C = 0 F = 0 AH
 C = 2 F = 0 BK

FILE NAME =	USER NAME = cthomas	DESIGNED -	REVISED -	LASALLE COUNTY COUNTY HIGHWAY 19 OVER FIRST CREEK	CROSS SECTIONS			F.A.S. RTE. 270	SECTION 13-00727-00-BR	COUNTY LASALLE	TOTAL SHEETS 13	SHEET NO. 13
V:\B-101\3203-a\101\3203\101\101.dgn	FLIGHT SCALE = 5.0000 / 1 in.	DRAWN -	REVISED -									
MODEL NAME =	PILOT DATE = 3/27/2013	CHECKED -	REVISED -		SCALE: 1"=5'	SHEET 3	OF 3	SHEETS	STA. 20+50.00	TO STA. 21+25.00	FED. ROAD DIST. NO. 7 ILLINOIS	FED. AID PROJECT BR5-0270(102)
		DATE -	REVISED -		CONTRACT NO. 87556							