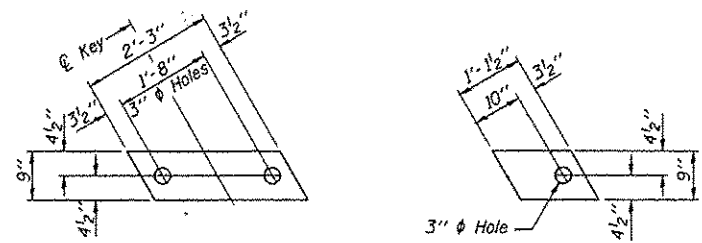


ROUTE NO.	SECTION	COUNT	NO. SHEETS	SHEET
FAS452	#	FULTON	26	10
FED. ROAD DIST. NO.		FULTON PROJECT		

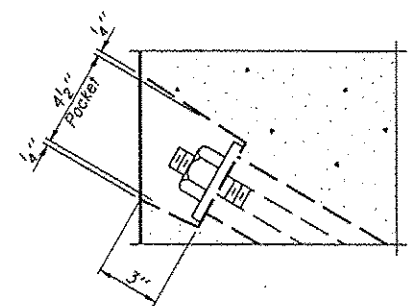
\* 09-00130-05-BR



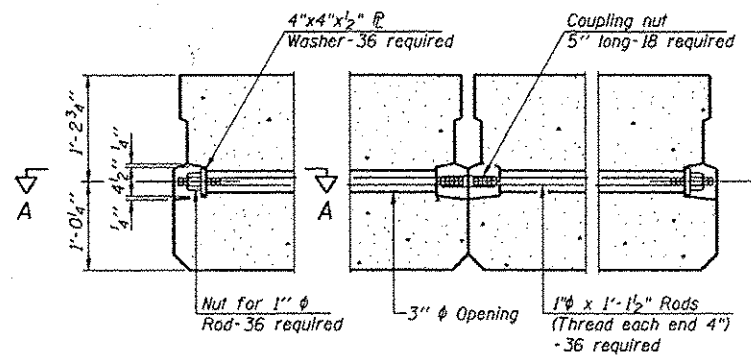
**FABRIC BEARING PAD (Interior)**  
**FABRIC BEARING PAD (Exterior)**

**FIXED**

**NOTES:**  
All bearing pads shall be 1" thick  
Omit holes when using expansion bearings  
Expansion bearing shall be bonded to the substructure.

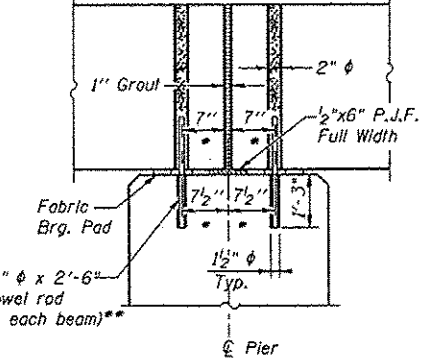


**SECTION A-A**



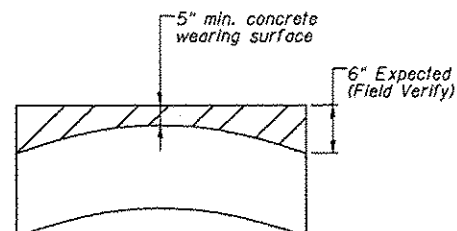
**TYPICAL TRANSVERSE TIE ASSEMBLY**

1" Joint shall be packed with a very dry mix of 2:1 sand and P.C. mortar.  
1" Dimension may vary plus or minus to accommodate tolerance in beam lengths.



**SECTION AT PIER**

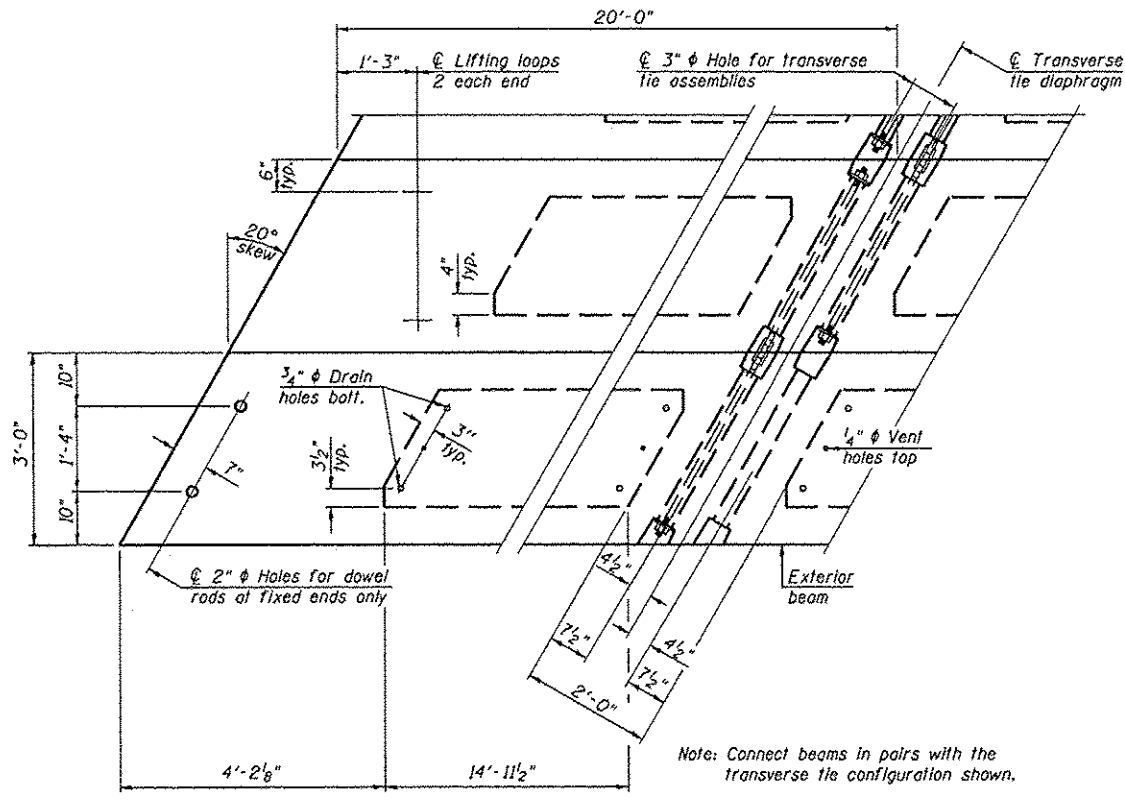
\* Perpendicular to C of abutment or pier  
\*\* Dowel rods to be grouted after beams are in place and prior to grouting the shear keys



**CAMBER DIAGRAM**  
Along Center of Beam

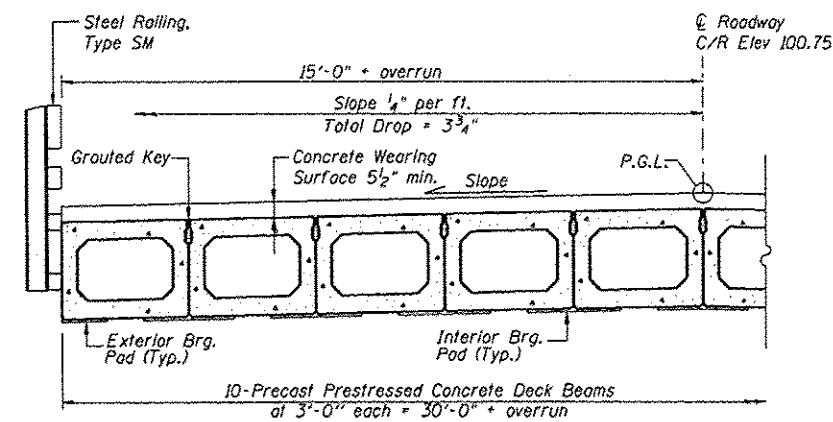
**NOTES**

Prestressing steel shall be uncoated high strength, low relaxation 7-wire strand, Grade 270. The nominal diameter shall be 1/2" and the nominal cross-sectional area shall be 0.153 sq. in. The 1" rods in the transverse tie assembly shall be tightened to a snug fit and the threads set. Pockets on exterior faces of bridge shall be filled with grout after transverse tie assembly is in place.  
Reinforcement bars shall conform to ASTM A 706, Grade 60. (See Special Provisions).  
Two 1/8" fabric adjusting shims of the dimensions of the exterior bearing pad shall be provided for each bearing pad location.  
A minimum 2 1/2" lifting pin shall be used to engage the lifting loops during handling.  
Corrosion Inhibitor, per Article 1020.05(b)(12) and 1021.06 of the Standard Specifications, shall be used in the concrete for precast prestressed concrete deck beams.  
Compressive strength of prestressed concrete, f'c, shall be 6000 psi.  
Compressive strength of prestressed concrete at release, f'ci, shall be 5000 psi.

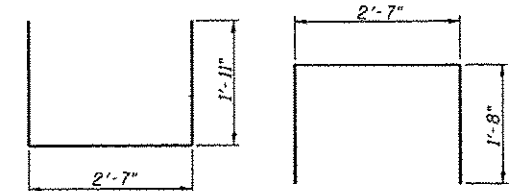


**PLAN VIEW**

Note: Connect beams in pairs with the transverse tie configuration shown.

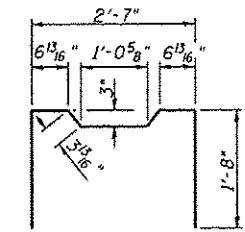


**HALF CROSS SECTION**

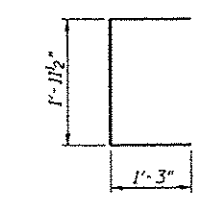


**BAR S1(E)**

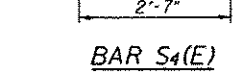
**BAR S2(E)**



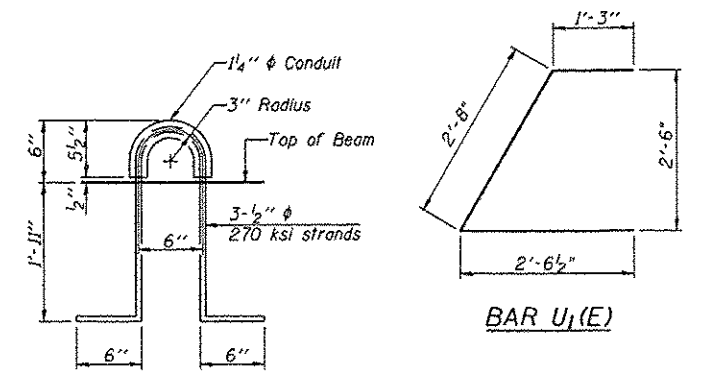
**BAR S3(E)**



**BAR S4(E)**



**BAR U1(E)**



**LIFTING LOOP DETAIL**

**BILL OF MATERIAL**  
**SPANS 1 AND 3**

Precast Prestressed Conc. Deck Bms. (27" depth)	Sq. Ft.	1677
---	---------	------

**27" x 36" PPC DECK BEAM**  
**STRUCTURE NO. 092-3457**  
**SPAN 2**

PD-2736-LD 11/1/09

DSGN	K.J. Hoffmann				
DR	K.J. Hoffmann				
CHK	J.R. Wolf				
APVD	A. Frauenhoffer	NO.	DATE	REVISION	BY



**FRAUENHOFFER & ASSOCIATES**  
A division of Engineering Resource Associates, Inc.  
Consulting Engineers, Scientists, & Surveyors

3002 CROSSING COURT  
CHAMPAIGN, IL 61822  
PHONE (217) 351-6268  
FAX (217) 355-1902

**SUPERSTRUCTURE DETAILS (SHEET 4 OF 4)**  
FAS 452 (CH2) OVER LASWELL BRANCH OF PUT CREEK  
SEC 08-00130-05-BR  
FULTON COUNTY

SHEET	10
DWG NO.	9029SUP.dgn
DATE	DEC 2012
PROJ NO.	9029