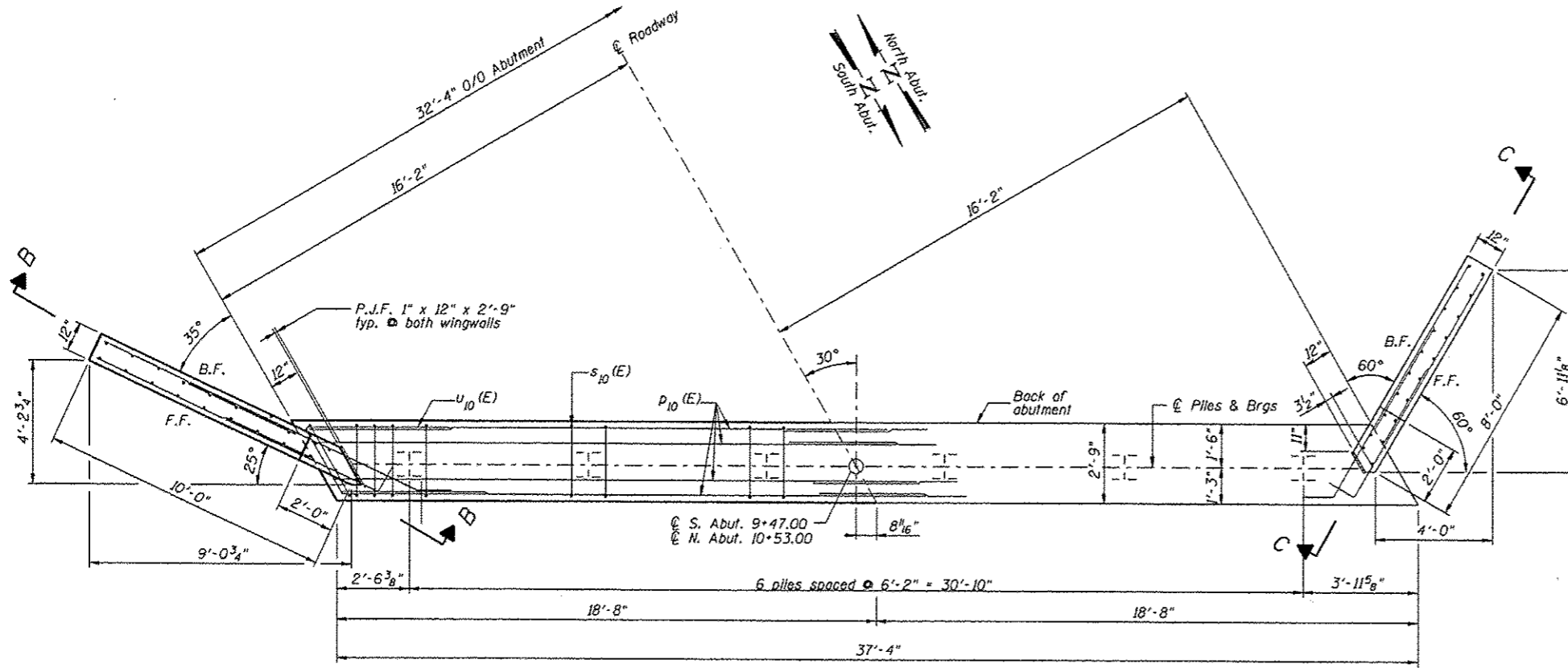
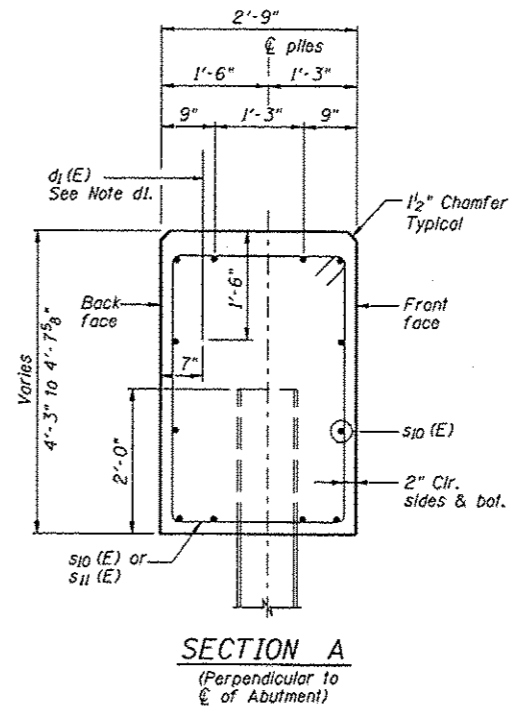


ROUTE NO.	SECTION	EDDITY	DATE	SHEET
FAS452	*	FULTON	26	12
FED. ROAD DIST. NO. 1		ILLINOIS FED. AID PROJECT		

* 09-00130-05-BR



PLAN
(Symmetrical about \hat{C} Abutment)

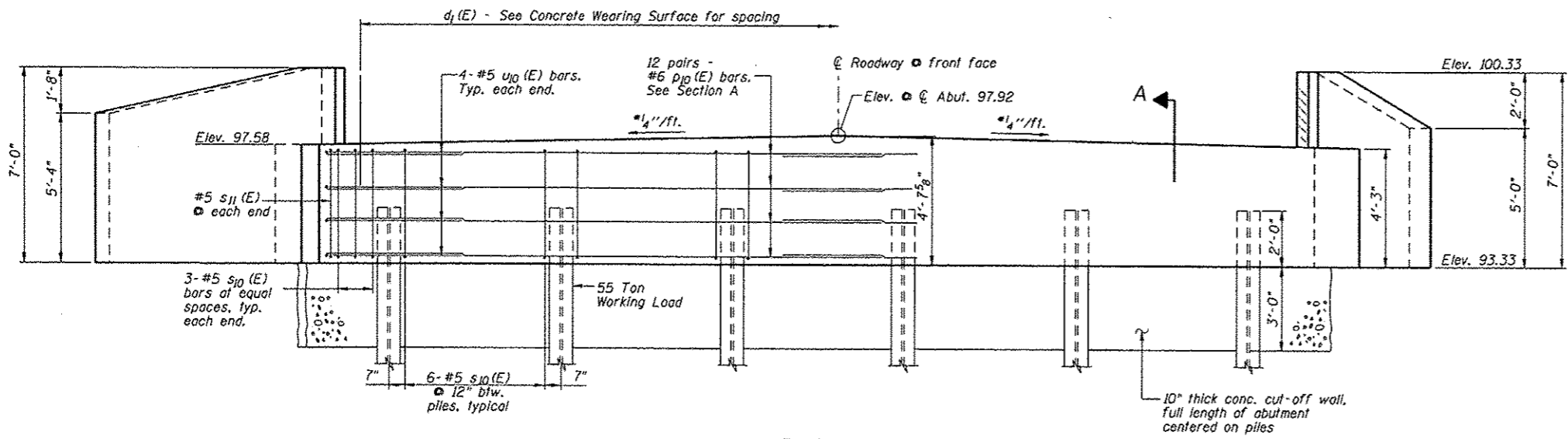


SECTION A
(Perpendicular to \hat{C} of Abutment)

Note d1: Bar d1(E) is included in the Concrete Wearing Surface. Full height of bar is not shown.

BILL OF MATERIAL - 2 ABUTS.

Bar	No.	Size	Length	Shape
h11 (E)	10	# 6	7'-0"	—
h12 (E)	10	# 5	8'-0"	—
h13 (E)	10	# 7	10'-1"	—
h14 (E)	10	# 5	7'-4"	—
h15 (E)	2	# 5	9'-8"	—
h16 (E)	2	# 5	8'-9"	—
h17 (E)	2	# 5	6'-2"	—
h18 (E)	2	# 5	5'-3"	—
h19 (E)	2	# 5	9'-9"	—
h20 (E)	2	# 5	8'-10"	—
h21 (E)	10	# 6	6'-3"	—
h22 (E)	10	# 5	6'-9"	—
h23 (E)	10	# 7	8'-0"	—
h24 (E)	10	# 5	6'-6"	—
h25 (E)	2	# 5	7'-4"	—
h26 (E)	2	# 5	7'-1"	—
h27 (E)	2	# 5	4'-7"	—
h28 (E)	2	# 5	4'-4"	—
h29 (E)	2	# 5	7'-11"	—
h30 (E)	2	# 5	7'-8"	—
d10 (E)	48	# 6	20'-6"	—
s10 (E)	72	# 5	13'-5"	—
s11 (E)	4	# 5	14'-2"	—
u10 (E)	16	# 5	12'-7"	—
v1 (E)	20	# 4	6'-9"	—
v2 (E)	4	# 4	6'-7"	—
v3 (E)	4	# 4	6'-4"	—
v4 (E)	4	# 4	6'-2"	—
v5 (E)	4	# 4	5'-11"	—
v6 (E)	4	# 4	5'-9"	—
v7 (E)	4	# 4	5'-6"	—
v8 (E)	4	# 4	5'-4"	—
v9 (E)	4	# 4	5'-1"	—
v10 (E)	4	# 4	6'-6"	—
v11 (E)	4	# 4	6'-3"	—
v12 (E)	4	# 4	5'-11"	—
v13 (E)	4	# 4	5'-8"	—
v14 (E)	4	# 4	5'-4"	—
v15 (E)	4	# 4	5'-1"	—
v16 (E)	4	# 4	4'-10"	—
Concrete Structures		Cu. Yds.	41.6	
Reinforcement Bars, Epoxy Coated		Lbs.	4130	
Test Pile, Steel HPIx42		Each	2	
Furnish Steel Piles HPIx42		Foot	330	
Driving Piles		Foot	330	
Pile Shoes		Each	12	
Name Plate		Each	1	
Concrete Cut-off Wall		Cu. Yds.	6.9	
Structure Excavation		Cu. Yds.	225	
Controlled Low-Strength Material		Cu. Yds.	105	



ELEVATION
Front Projection
(Symmetrical about \hat{C} Roadway)
* Perpendicular to Roadway

DSGNK. J. Hoffmann					
DR K. J. Hoffmann					
CHK J.R. Wolf					
APVD J.A. Fraenhoffer	NO.	DATE	REVISION	BY	APVD

FRAUENHOFER & ASSOCIATES
A division of Engineering Resource Associates, Inc.
Consulting Engineers, Scientists, & Surveyors

3002 CROSSING COURT
CHAMPAIGN, IL 61822
PHONE (217) 351-6268
FAX (217) 355-1902

ABUTMENT DETAILS (SHEET 1 OF 2)		SHEET 12
FAS 452 (CH2) OVER LASWELL BRANCH OF PUT CREEK		DWG NO. 9029ABT.dgn
SEC 08-00130-05-BR		DATE DEC 2012
FULTON COUNTY		PROJ NO. 9029