

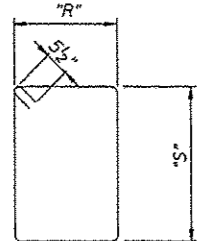
ROUTE NO.	SECTION	COUNTY	SHEET	TOTAL SHEETS
FAS452		FULTON	26	13
FED. ROAD DIST. NO. 7		FULTON PROJECT		

09-00130-05-BR

PILE DATA

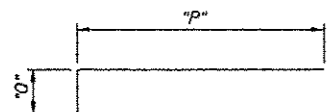
Type: Steel HP 10 x 42
 Nominal Required Bearing: 335 kips
 Factored Resistance Available: 184.5 kips
 Estimated Length: 33 ft.
 No. Required: 5 @ North Abutment
 5 @ South Abutment
 Test Piles: 1 @ North Abutment
 1 @ South Abutment

Note: The Steel H-piles shall be according to AASHTO M270 Grade 50.



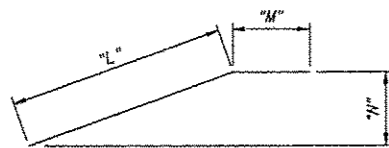
s₁₀(E) & s₁₁(E) BARS

Bar	"R"	"S"
s ₁₀ (E)	2'-5"	3'-10"
s ₁₁ (E)	2'-9 1/2"	3'-10"



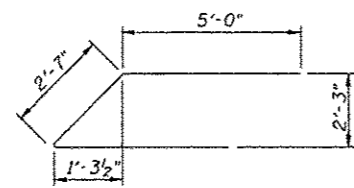
h₁₁(E) & h₂₁(E) BARS

Bar	"P"	"Q"
h ₁₁ (E)	6'-0"	12"
h ₂₁ (E)	5'-3"	12"

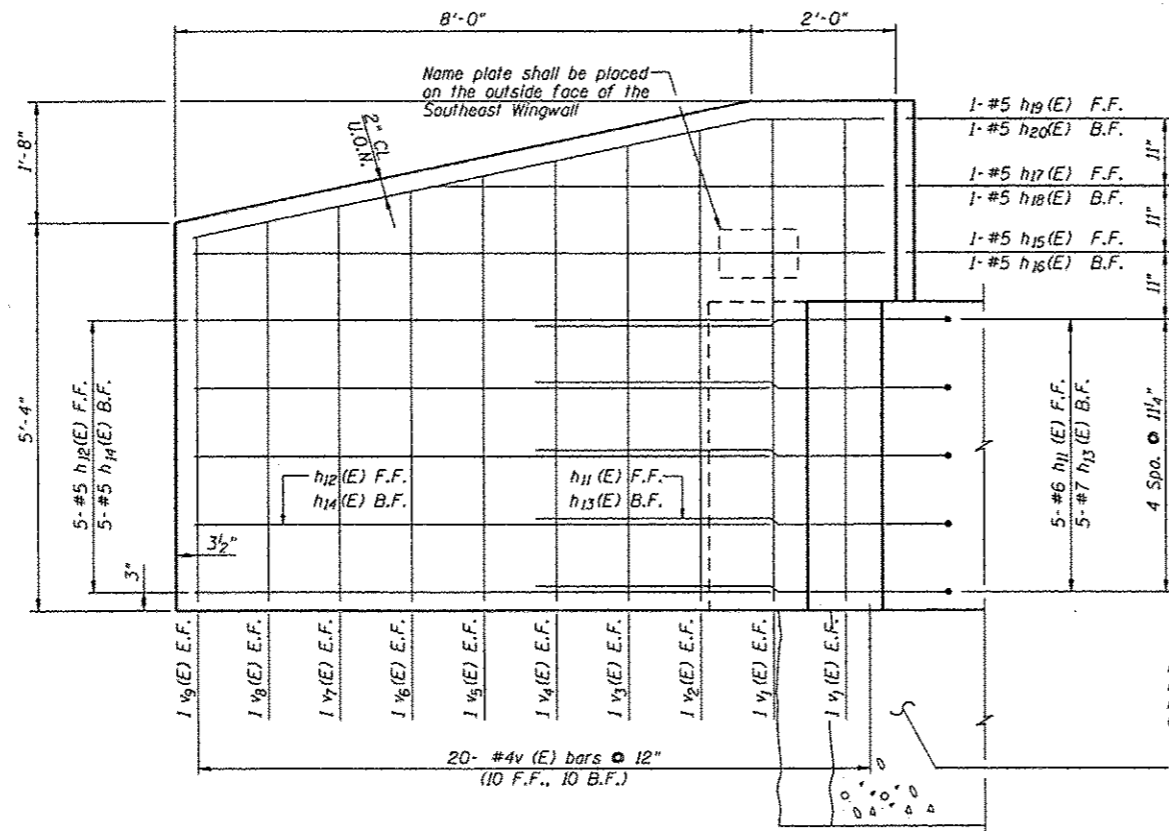


h₁₃(E), h₁₉(E), h₂₀(E), h₂₃(E), h₂₉(E), & h₃₀(E) BARS

Bar	"L"	"M"	"N"
h ₁₃ (E)	8'-11"	1'-2"	3'-9"
h ₁₉ (E)	7'-11"	1'-10"	1'-7 1/2"
h ₂₀ (E)	7'-11"	11"	1'-7 1/2"
h ₂₃ (E)	6'-10"	1'-2"	3'-5"
h ₂₉ (E)	6'-1"	1'-10"	1'-11 1/4"
h ₃₀ (E)	6'-1"	1'-7"	1'-11 1/4"

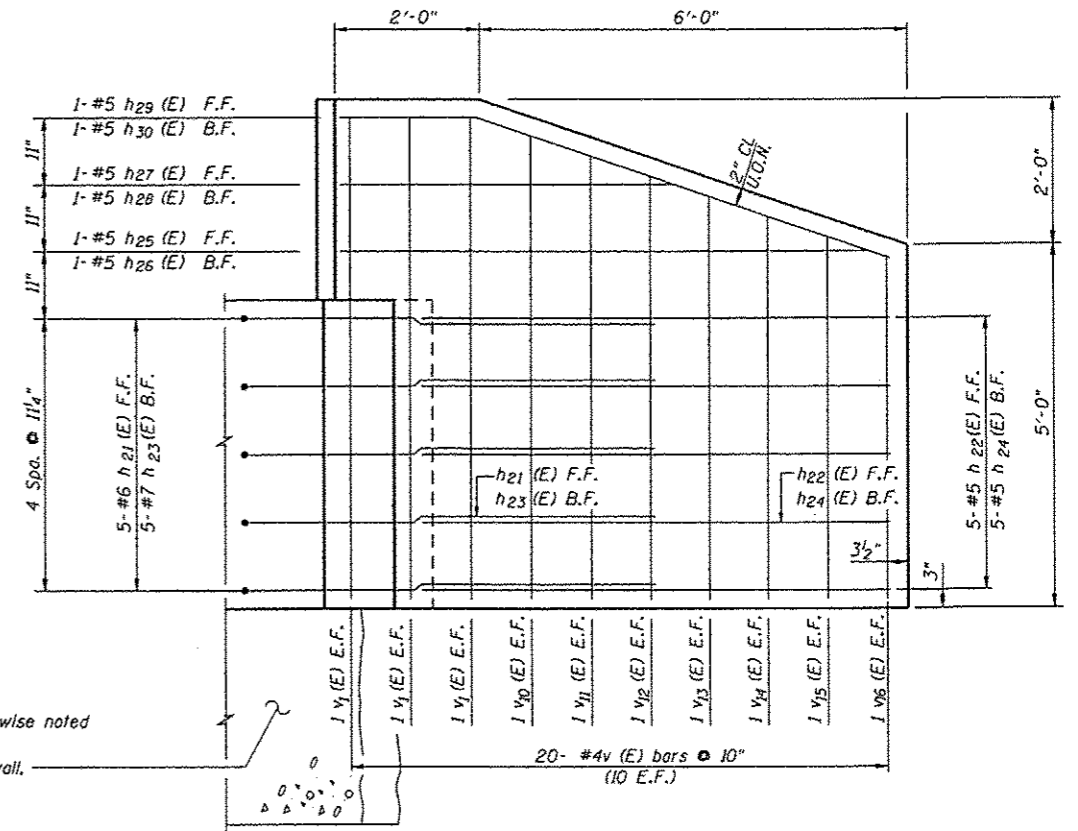


BAR u₁₀(E)



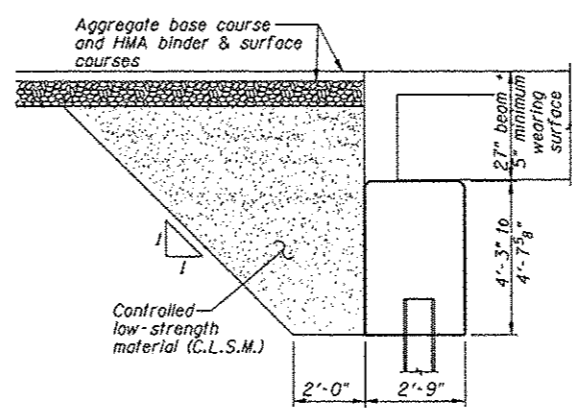
ELEV. B-B

Wingwalls shall be poured after beams are in place.



ELEV. C-C

Wingwalls shall be poured after beams are in place.



DETAIL BEHIND ABUTMENT

DSGN	K.J. Hoffmann				
DR	K.J. Hoffmann				
CHK	J.R. Wolf				
APVD	J.A. Fraenhoffer	NO.	DATE	REVISION	BY

FRAUENHOFER & ASSOCIATES
 A division of Engineering Resource Associates, Inc.
 Consulting Engineers, Scientists, & Surveyors

3002 CROSSING COURT
 CHAMPAIGN, IL 61822
 PHONE (217) 351-5258
 FAX (217) 355-1902

ABUTMENT DETAILS (SHEET 2 OF 2)		SHEET 13
FAS 452 (CH2) OVER LASWELL BRANCH OF PUT CREEK		DWG NO. 9029ABT.dgn
SEC 08-00130-05-BR		DATE DEC 2012
FULTON COUNTY		PROJ NO. 9029