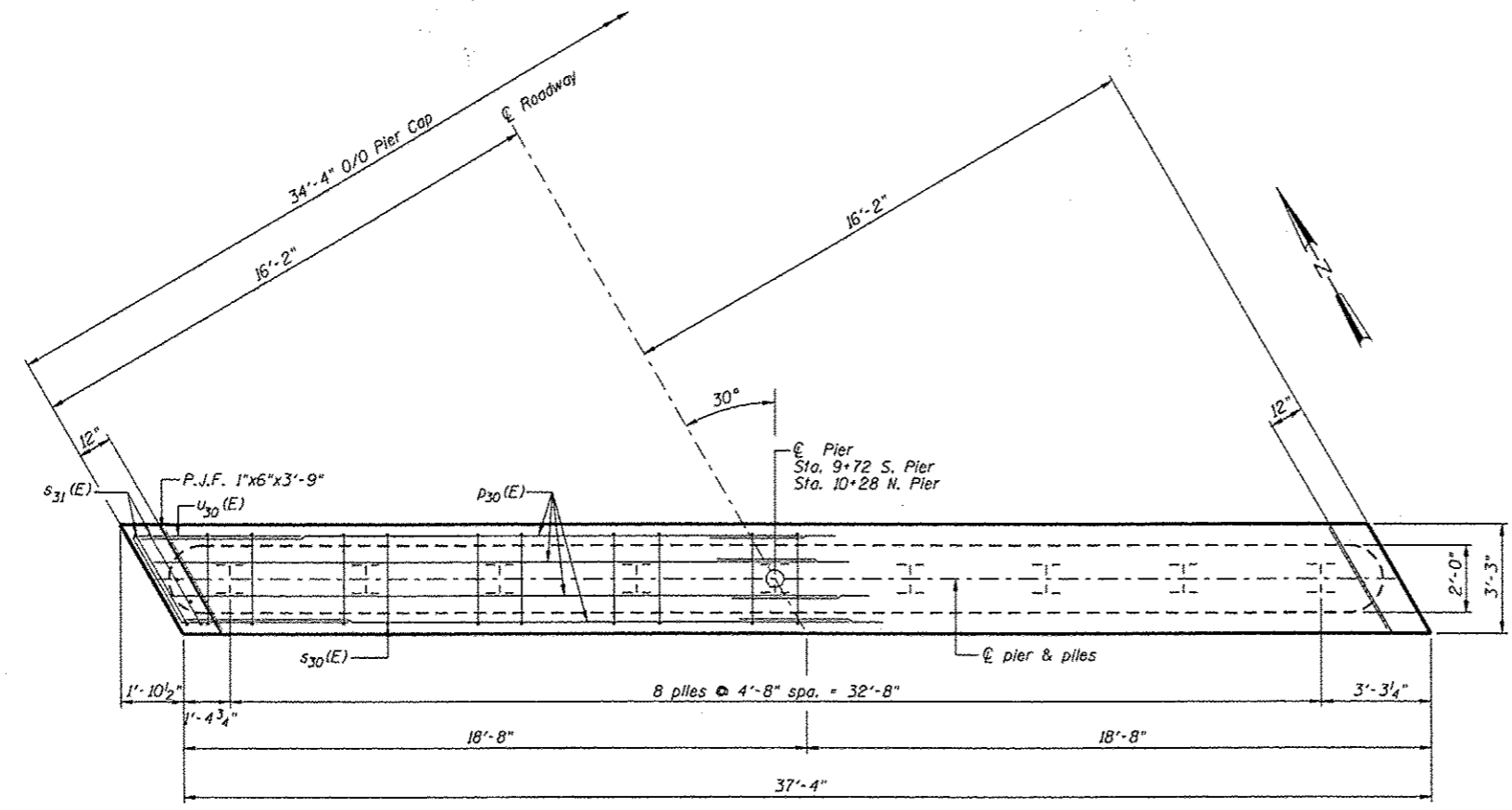


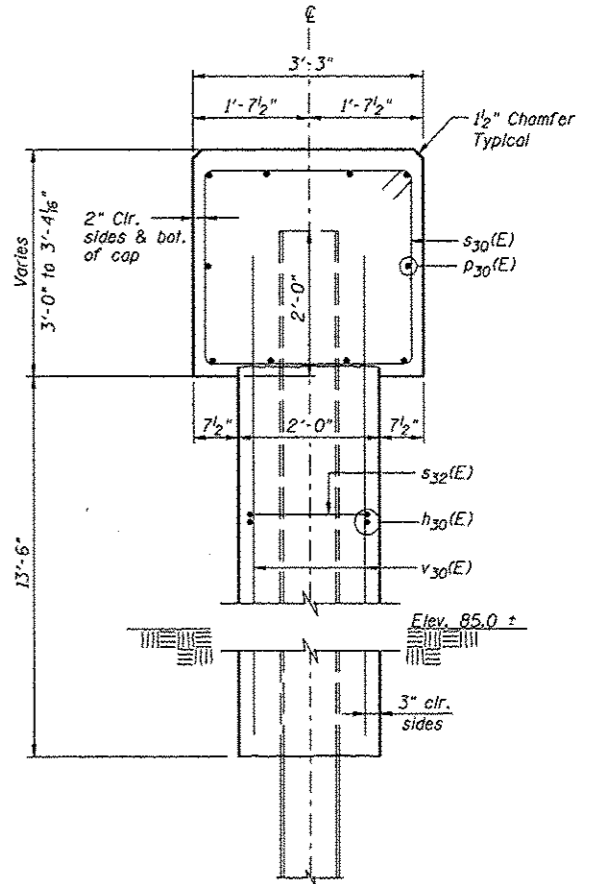
| ROUTE NO. | SECTION | COUNTY | SHEET NO. | TOTAL SHEETS |
|-----------------------|---------|----------|-----------|------------------|
| FAS452 | | FULTON | 26 | 14 |
| FED. ROAD DIST. NO. 7 | | ILLINOIS | | FED. AID PROJECT |

* 09-00130-05-BR

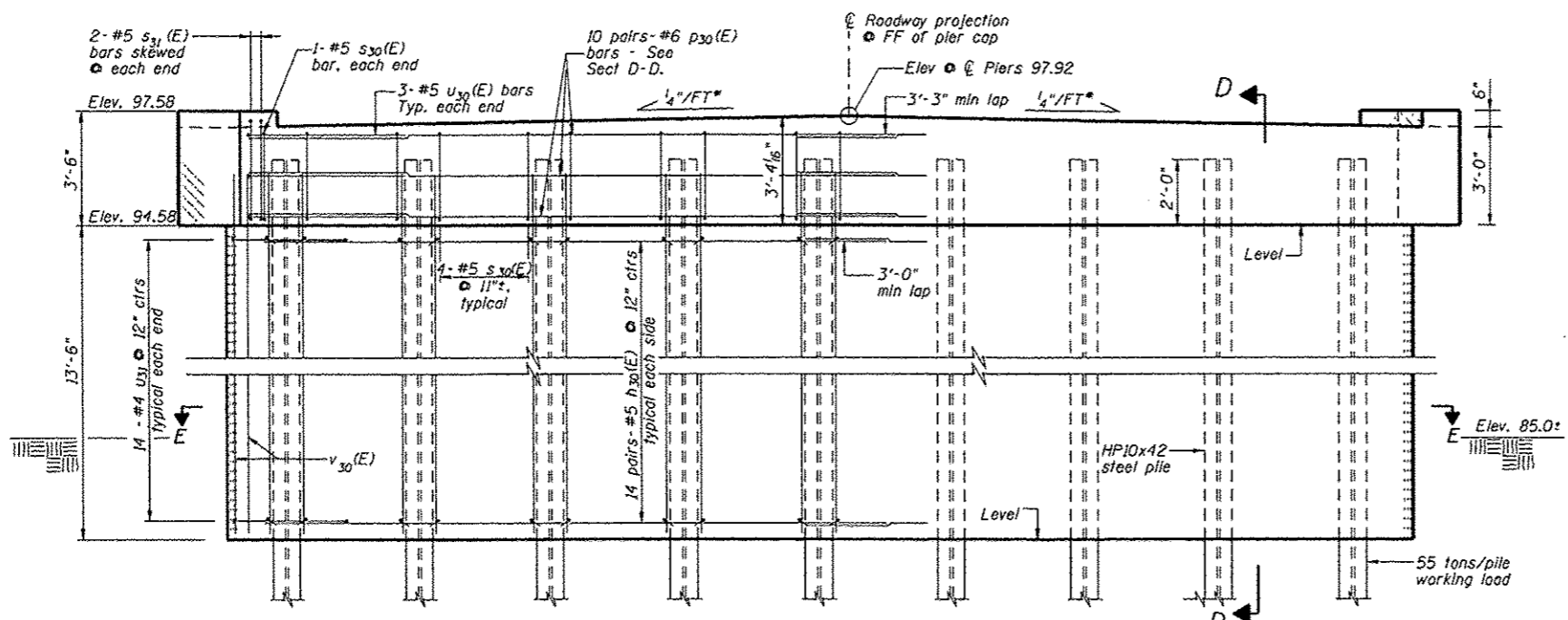


PLAN
(Symmetrical about \bar{C} Pier)

NOTE: All edges shall have standard $\frac{1}{4}$ " chamfer, except as noted.



SECTION D-D
(Perpendicular to \bar{C} of Pier)



ELEVATION

Front Projection
(Symmetrical about \bar{C} Roadway)
* Perpendicular to Roadway

| | | | | | |
|------|------------------|-----|------|----------|----|
| DSGN | J. Hoffmann | | | | |
| DR | K.J. Hoffmann | | | | |
| CHK | J.R. Wolf | | | | |
| APVD | J.A. Fraunhoffer | NO. | DATE | REVISION | BY |

FRAUENHOFER & ASSOCIATES
A division of Engineering Resource Associates, Inc.
Consulting Engineers, Scientists, & Surveyors

3002 CROSSING COURT
CHAMPAIGN, IL 61822
PHONE (217) 351-6268
FAX (217) 355-1902

| | | |
|---|--|----------------------|
| PIER DETAILS (SHEET 1 OF 2) | | SHEET 14 |
| FAS 452 (CH2) OVER LASWELL BRANCH OF PUT CREEK SEC 08-00130-05-BR FULTON COUNTY | | DWG NO. 9029PIER.dgn |
| | | DATE DEC 2012 |
| | | PROJ NO. 9029 |