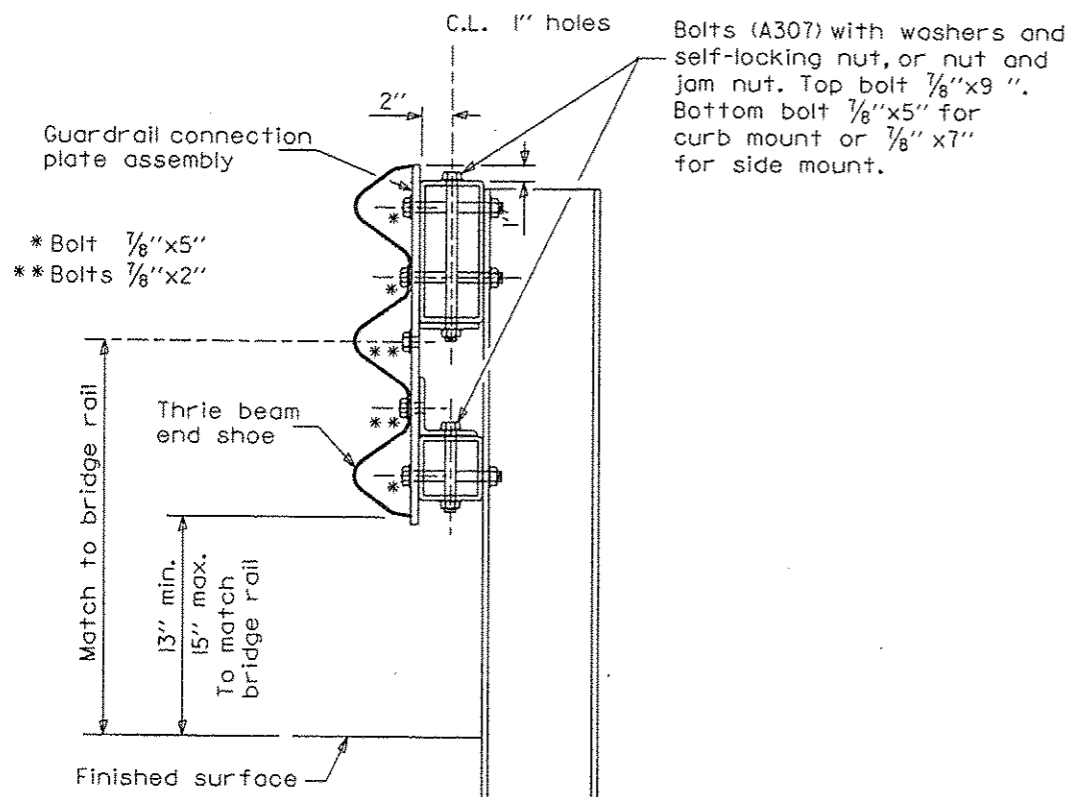
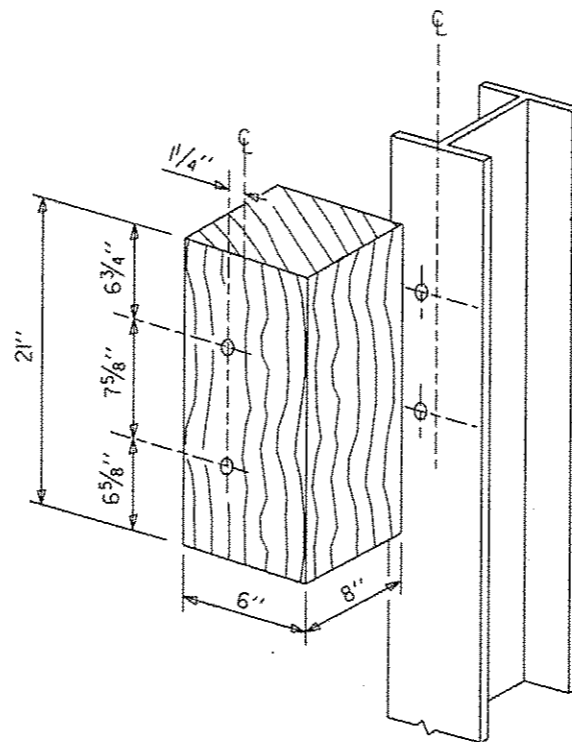


| ROUTE NO.             | SECTION | COUNTY                      | SHEETS | SHEET |
|-----------------------|---------|-----------------------------|--------|-------|
| FAS452                | *       | FULTON                      | 26     | 23    |
| FED. ROAD DIST. NO. 7 |         | ILL. PROJ. FED. AID PROJECT |        |       |

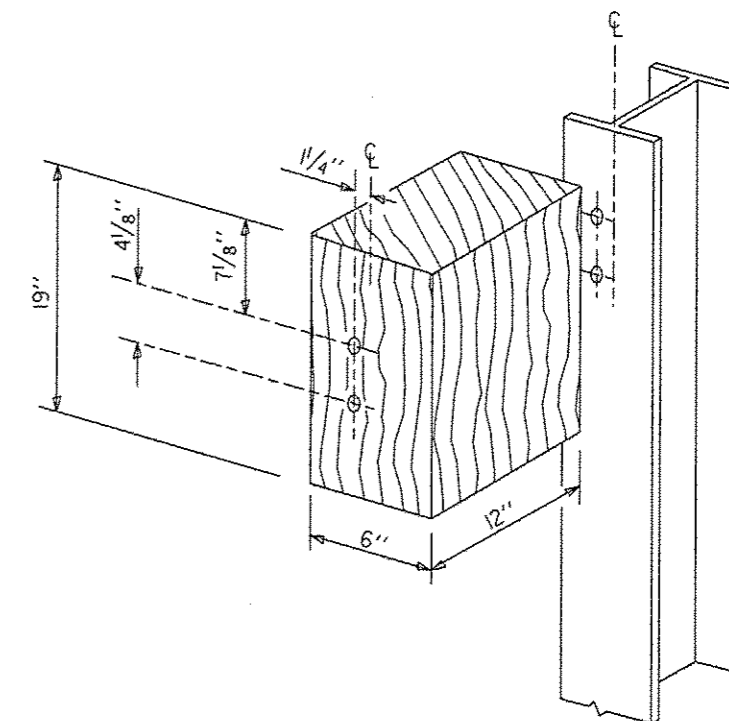
\* 08-00130-05-BR



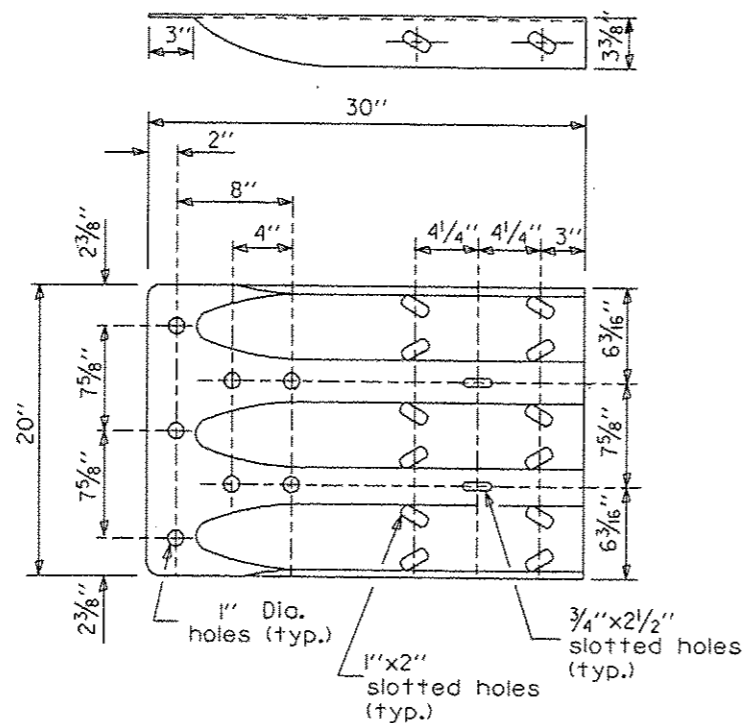
SECTION C-C



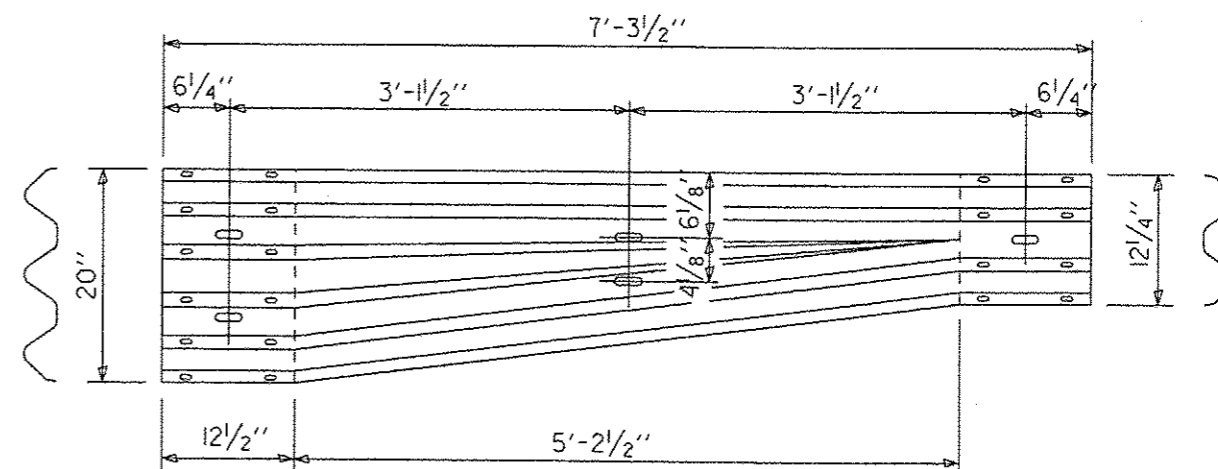
POSTS I-II WOOD BLOCKOUT DETAIL



POSTS 12-13 WOOD BLOCKOUT DETAIL



MODIFIED THRIE BEAM END SHOE DETAIL



TRANSITION SECTION  
(10 gauge rail element)

|      |                |     |      |          |    |
|------|----------------|-----|------|----------|----|
| DSGN | K.J. Hoffmann  |     |      |          |    |
| DR   | K.J. Hoffmann  |     |      |          |    |
| CHK  | J.R. Wolf      |     |      |          |    |
| APVD | A. Fraenhoffer | NO. | DATE | REVISION | BY |

**FRAUENHOFER & ASSOCIATES**  
A division of Engineering Resource Associates, Inc.  
Consulting Engineers, Scientists, & Surveyors

3002 CROSSING COURT  
CHAMPAIGN, IL 61822  
PHONE (217) 351-6268  
FAX (217) 355-1902

TRAFFIC BARRIER TERMINAL TYPE 6A (SPECIAL)  
FAS 452 (CH2) OVER LASWELL BRANCH OF PUT CREEK  
SEC 08-00130-05-BR  
FULTON COUNTY

|          |             |
|----------|-------------|
| SHEET    | 23          |
| DWG NO.  | 9029-6A.dgn |
| DATE     | DEC 2012    |
| PROJ NO. | 9029        |