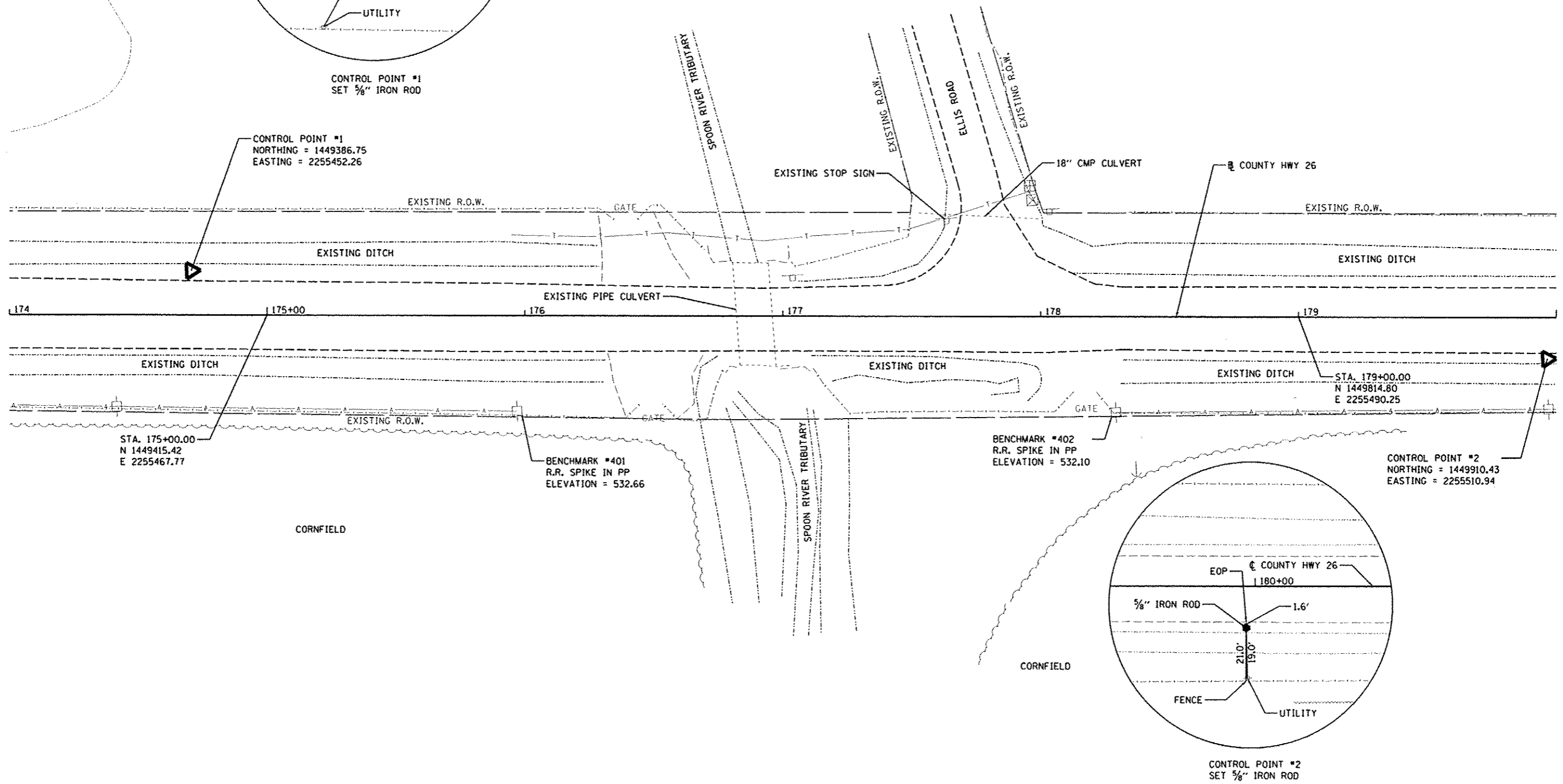
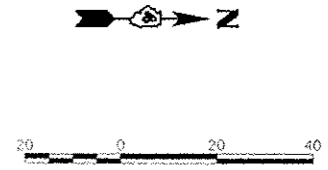


CONTROL POINT #1
SET 5/8" IRON ROD



CONTROL POINT #1
NORTHING = 1449386.75
EASTING = 2255452.26

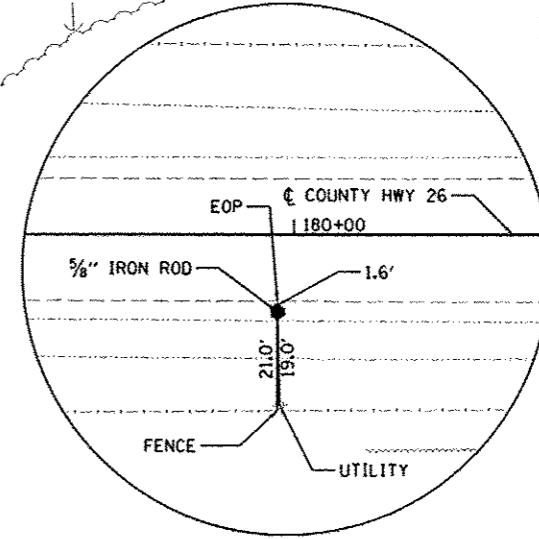
STA. 175+00.00
N 1449415.42
E 2255467.77

BENCHMARK #401
R.R. SPIKE IN PP
ELEVATION = 532.66

BENCHMARK #402
R.R. SPIKE IN PP
ELEVATION = 532.10

CONTROL POINT #2
NORTHING = 1449910.43
EASTING = 2255510.94

STA. 179+00.00
N 1449814.80
E 2255490.25



CONTROL POINT #2
SET 5/8" IRON ROD

© Copyright Hanson Professional Services, Inc. 2013
HANSON
 Hanson Professional Services, Inc.

DESIGNED	3/26/13
DRAWN	3/27/13
CHECKED	3/27/13
REVIEWED	3/27/13

FILE NAME =	USER NAME = andr08846	DESIGNED - KNB	REVISED -
cr:\pawse\work\do_not_delete\dm48234\04	08137-ah-A18801.dgn	DRAWN - SIP	REVISED -
Default	Default	CHECKED - CAL	REVISED -
		DATE - 3-26-13	REVISED -

STATE OF ILLINOIS
DEPARTMENT OF TRANSPORTATION

FULTON CO HWY 26 ALIGNMENT, BENCHMARK AND TIES PLAN			
SCALE: 1"=20'	SHEET 5	OF 23 SHEETS	STA. 174+00 TO STA. 180+00

F.A. RTE.	SECTION	COUNTY	TOTAL SHEETS	SHEET NO.
CH26	11-00143-00-BR	FULTON	23	5
CONTRACT NO. 89597			[ILLINOIS] FED. AID PROJECT BROS 0057 (032)	