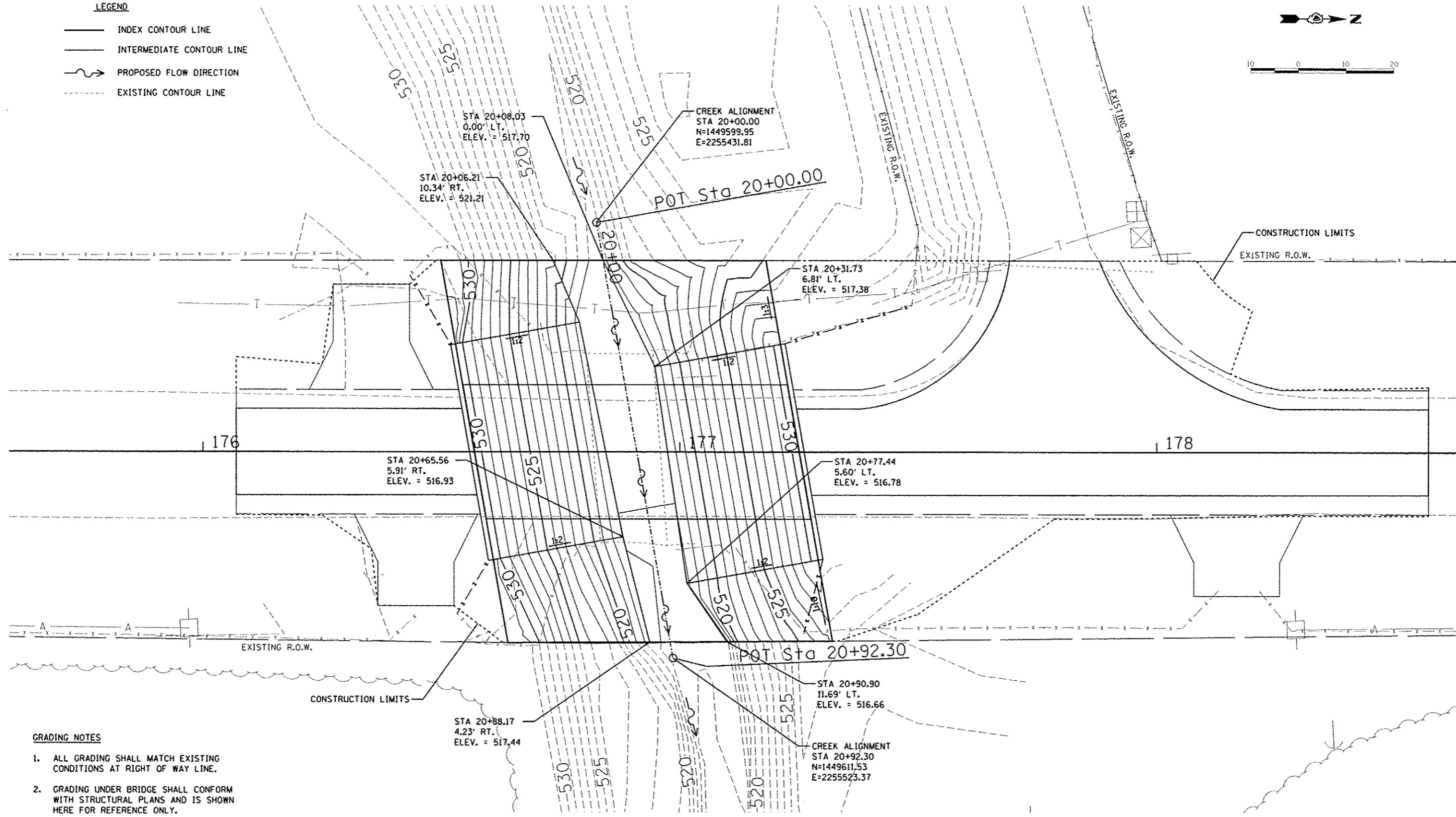
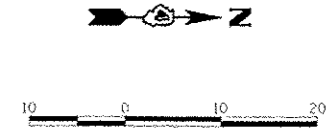


**LEGEND**

- INDEX CONTOUR LINE
- - - INTERMEDIATE CONTOUR LINE
- PROPOSED FLOW DIRECTION
- - - EXISTING CONTOUR LINE



**GRADING NOTES**

1. ALL GRADING SHALL MATCH EXISTING CONDITIONS AT RIGHT OF WAY LINE.
2. GRADING UNDER BRIDGE SHALL CONFORM WITH STRUCTURAL PLANS AND IS SHOWN HERE FOR REFERENCE ONLY.
3. STATION/OFFSET/ELEVATION CALLOUTS DEFINING BOTTOM OF CHANNEL ARE APPROXIMATE.
4. SEE BRIDGE PLANS FOR CROSS SECTIONS OF RIPRAP AREA.

© Copyright Hanson Professional Services Inc. 2013  
**HANSON**  
 Hanson Professional Services Inc.

LAYOUT	ANS	1/20/13
DRAWN	SIP	2/1/13
REVIEWED	WSE	1/30/13

FILE NAME : c:\pwise\work\4do\dot\delete\dm40234\04	USER NAME : andar.00046	DESIGNED - MGO	REVISOR -
	3/0137-sht-grd-001.dgn	DRAWN - SIP	REVISOR -
		CHECKED - CAL	REVISOR -
		DATE - 3-26-13	REVISOR -

**STATE OF ILLINOIS**  
**DEPARTMENT OF TRANSPORTATION**

SCALE: 1"=10'	SHEET 9	OF 23	SHEETS	STA. 176+00	TO STA. 178+00
---------------	---------	-------	--------	-------------	----------------

F.A. RTE.	SECTION	COUNTY	TOTAL SHEETS	SHEET NO.
CH26	11-00143-00-BR	FULTON	23	9
CONTRACT NO. 89597			ILLINOIS FED. AID PROJECT BR05 0057 0032	