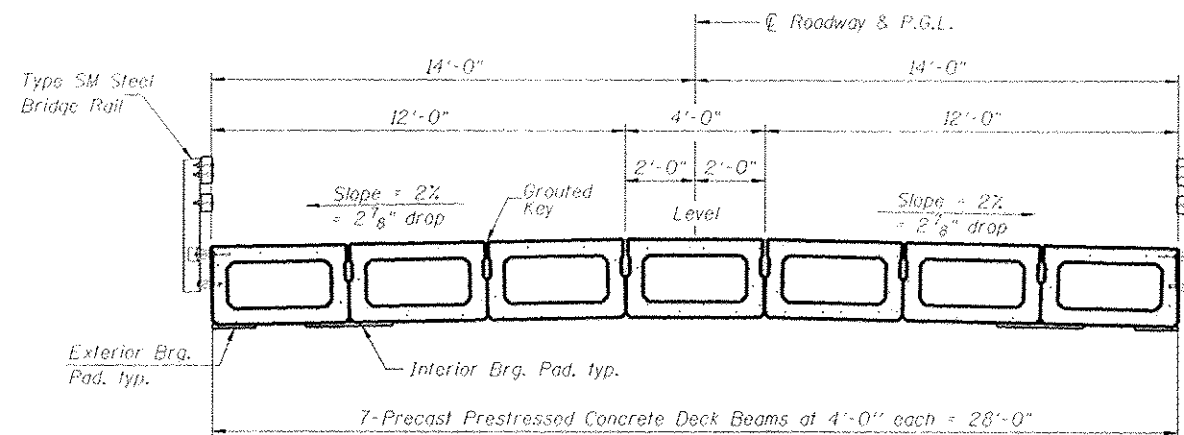
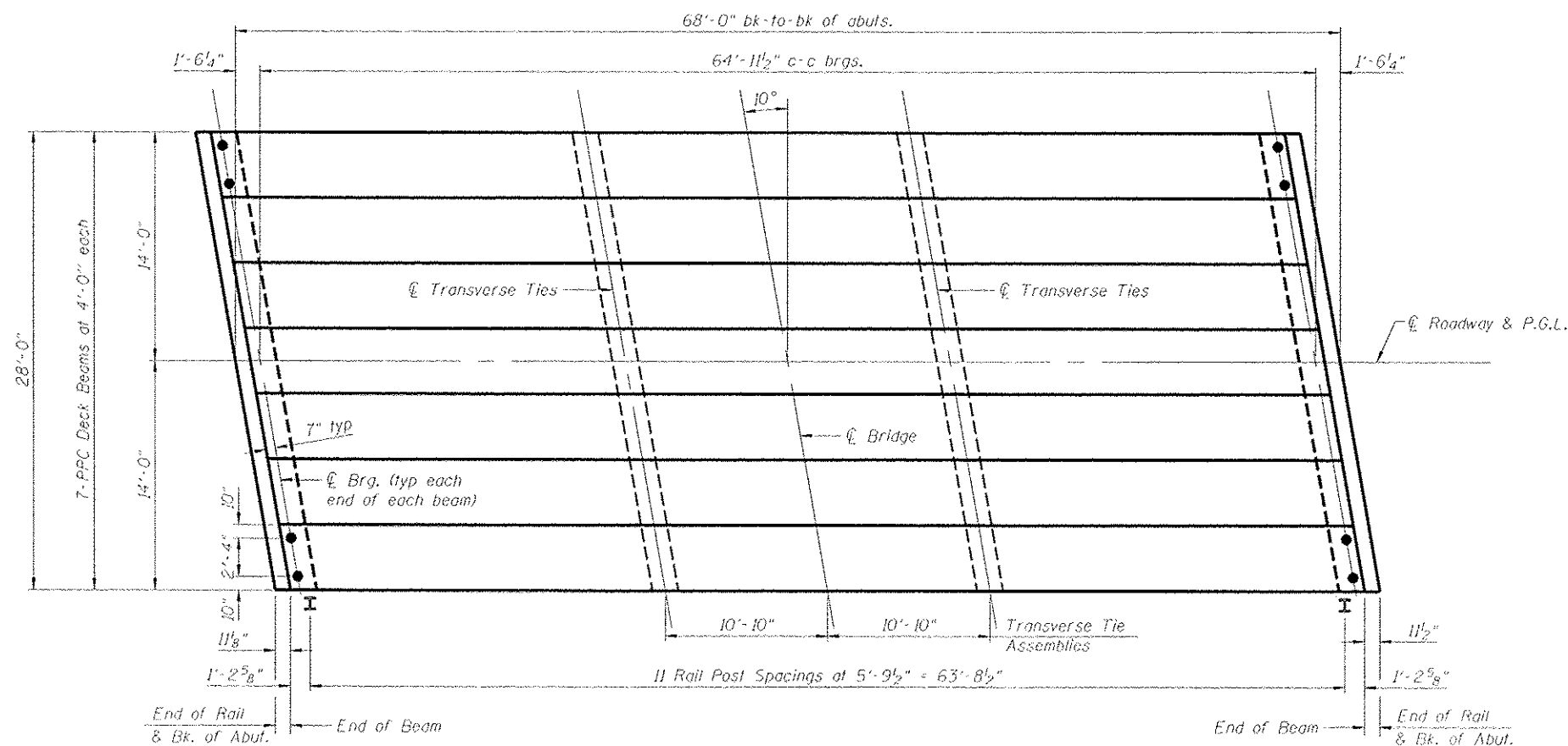


**ELEVATION**

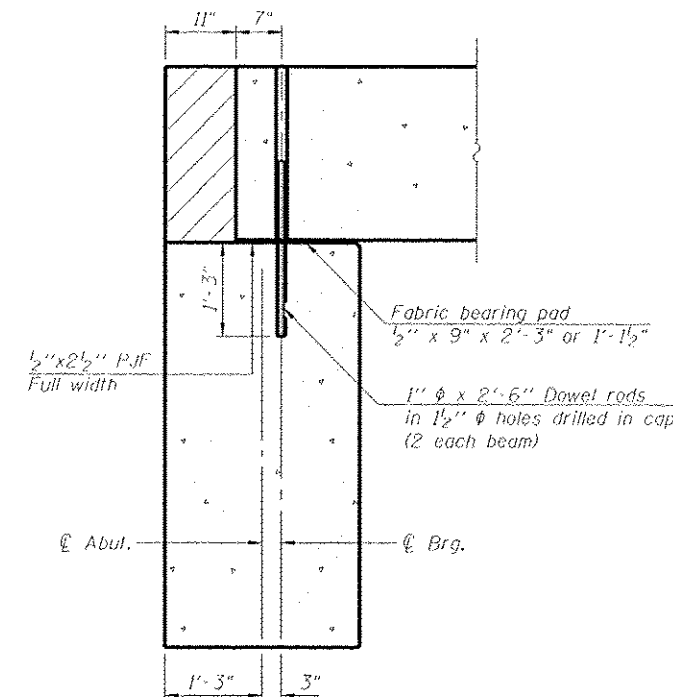
(All Dimensions along  $\bar{C}$  of beam)



**CROSS SECTION**



**PLAN**



**SECTION THRU ABUTMENT**

(All Dimensions at right angle to abut.)

**NOTES**

- After beams have been erected, holes shall be drilled into substructure and anchor dowels placed. Dowel holes shall be filled with non-shrink grout to top of beam and allowed to cure min. 24 hours prior to grouting the shear keys. Longitudinal keys shall be grouted.
- The bearing seat surfaces shall be adjusted by shimming to assure firm and even bearing.
- See sheet 5 of 9 for bearing pad details.
- Hatched area to be poured after deck beams are in place, and will be paid for as Concrete Structures.

**PCC DECK BEAM SUPERSTRUCTURE  
STRUCTURE NUMBER 029-3240**

PROFESSIONAL DESIGN FIRM LICENSE #184-001084

© Copyright Hanson Professional Services Inc. 2013



JOB NO. 10L0137  
DATE 3/22/13

SHEET NO. 3  
9 SHEETS

| CH  | SECTION        | COUNTY | TOTAL SHEETS | SHEET NO. |
|---|----------------|--------|--------------|-----------|
| 26  | 11-00143-00-BR | Fulton | 23           | 12        |
| CONTRACT NO. 89597                              |                |        |              |           |
| FED. ROAD DIST. NO. 2 ILLINOIS FED. AID PROJECT |                |        |              |           |

03/27/2013  
c:\aw\lee\_werk\work\delve\dms4825610293240-89597-5003-Superstructure.dgn

|         |     |        |
|---------|-----|--------|
| DATE    | BY  | CHKD   |
| 3/22/13 | MSM | JSM/13 |
| 3/22/13 | MSM |        |
| 3/22/13 | MSM |        |