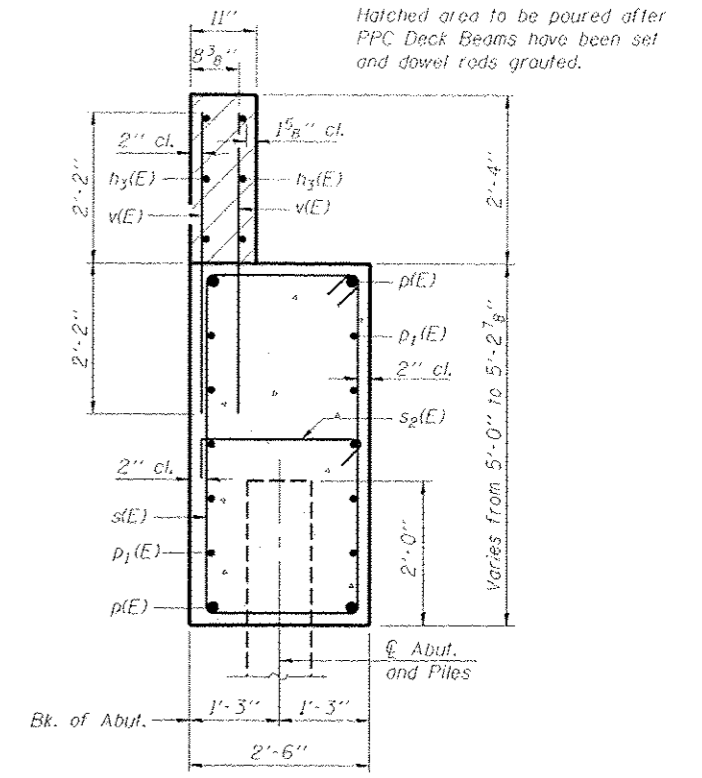
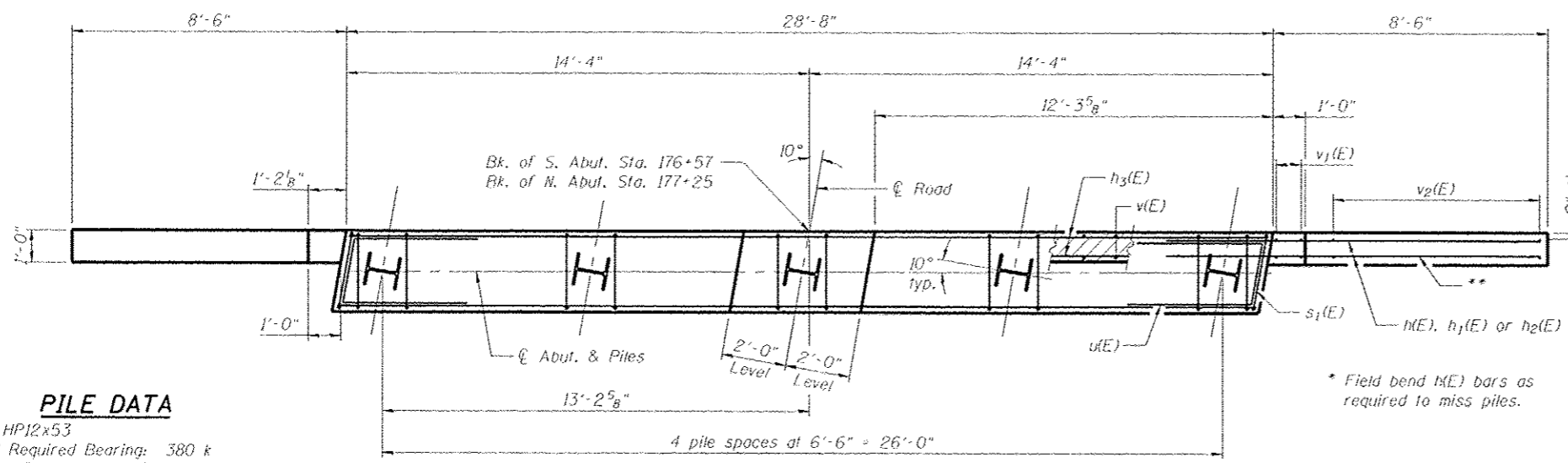


ELEVATION



SEC. THRU ABUT.
Dimensions at right angles to abutment



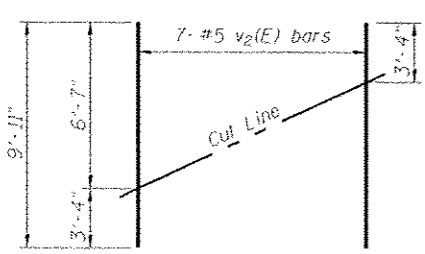
PLAN

PILE DATA

Type: HP12x53
 Nominal Required Bearing: 380 k
 Factored Resistance Available: 209 k
 Est. Length: 55 ft. (N. Abut.) 59 ft. (S. Abut.)
 No. Production Piles: 8 (4 ea. abut.)
 No. Test Piles: 2 (1 ea. abut.)

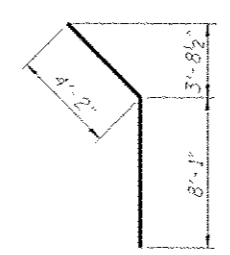
BILL OF MATERIAL FOR TWO ABUTMENTS

Bar	No.	Size	Length	Shape
h ₃ (E)	56	#6	11'-6"	—
h ₂ (E)	16	#5	7'-3"	—
h ₂ (E)	8	#5	12'-3"	—
h ₃ (E)	12	#5	28'-4"	—
p ₁ (E)	8	#8	28'-4"	—
p ₂ (E)	20	#5	28'-4"	—
s ₁ (E)	44	#5	14'-7"	□
s ₂ (E)	4	#5	14'-8"	□
s ₂ (E)	20	#5	3'-2"	└┘
u(E)	24	#6	9'-9"	└┘
v(E)	116	#5	4'-4"	—
v ₁ (E)	16	#5	7'-0"	—
v ₂ (E)	28	#5	9'-11"	—
Structure Excavation			Cu. Yd.	167
Concrete Structures			Cu. Yd.	39.0
Reinforcement Bars, Epoxy Coated			Pound	4,820
Furnishing Steel Piles, HP 12x53			Foot	456
Driving Piles			Foot	456
Test Pile, Steel HP 12x53			Each	2
Pile Shoes			Each	8

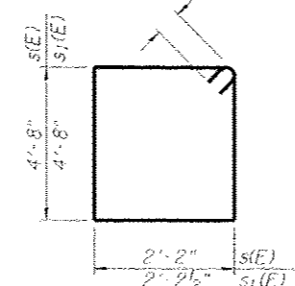


FIELD CUTTING DIAGRAM

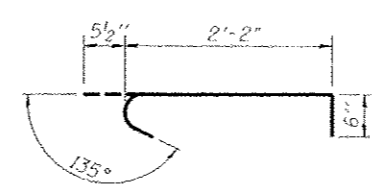
Order v₂(E) full length. Cut as shown and use remainder of bars in opposite face.



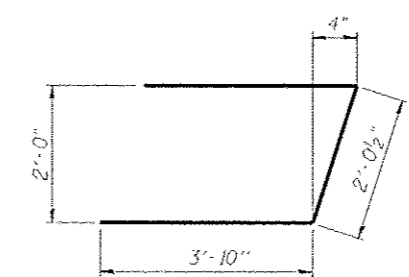
BAR h₂(E)



BAR s(E) & s₁(E)



BAR s₂(E)



BAR u(E)

ABUTMENTS

STRUCTURE NUMBER 029-3240

PROFESSIONAL DESIGN FIRM LICENSE #184-001084

© Copyright Hanson Professional Services Inc. 2013



10/0137
3/22/13

SHEET NO. 7
9 SHEETS

CH	SECTION	COUNTY	TOTAL SHEETS	SHEET NO.
26	11-00143-00-BR	Fulton	23	16
CONTRACT NO. 89597				
FED. ROAD DIST. NO. 2 ILLINOIS FED. AID PROJECT				

03/27/2013
c:\pwworking\hanson\proj\029-3240-001084.dwg

LAYOUT	SMA	1/10/13
DRAWN	MSM	3/22/13
REVIEWED	SMA	3/22/13