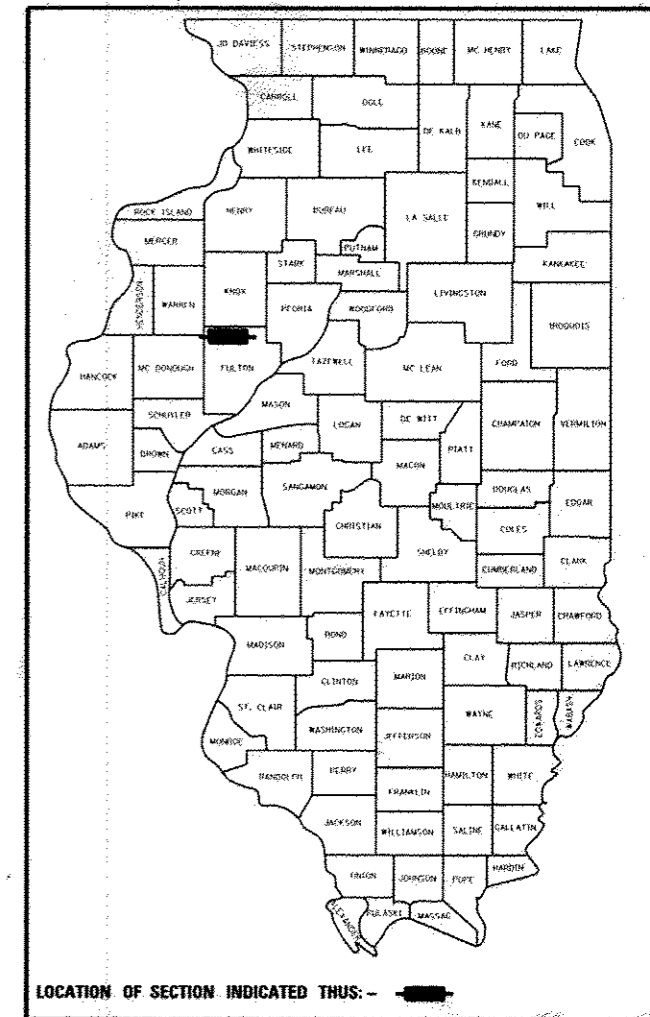


1. COVER
2. GENERAL NOTES AND LEGEND
3. SUMMARY AND SCHEDULE OF QUANTITIES
4. TYPICAL SECTIONS
5. ALIGNMENT, BENCHMARKS, AND TIES
6. DEMOLITION PLAN
7. PLAN AND PROFILE
8. EROSION CONTROL PLAN
9. GRADING PLAN
10. GENERAL PLAN AND ELEVATION
11. GENERAL NOTES AND RIPRAP DETAILS
12. PCC DECK BEAM SUPERSTRUCTURE
13. 27" X 48" PCC DECK BEAM
14. 27" X 48" PCC DECK BEAM DETAILS
15. STEEL RAILING, TYPE SM
16. ABUTMENTS
17. HP PILE DETAILS
18. BORING LOGS
19. ROADWAY - CROSS SECTIONS
20. ROADWAY - CROSS SECTIONS
21. ROADWAY - CROSS SECTIONS
22. CREEK - CROSS SECTIONS
23. CREEK - CROSS SECTIONS

STATE OF ILLINOIS
DEPARTMENT OF TRANSPORTATION
DIVISION OF HIGHWAYS
**PLANS FOR PROPOSED
BRIDGE REPLACEMENT**

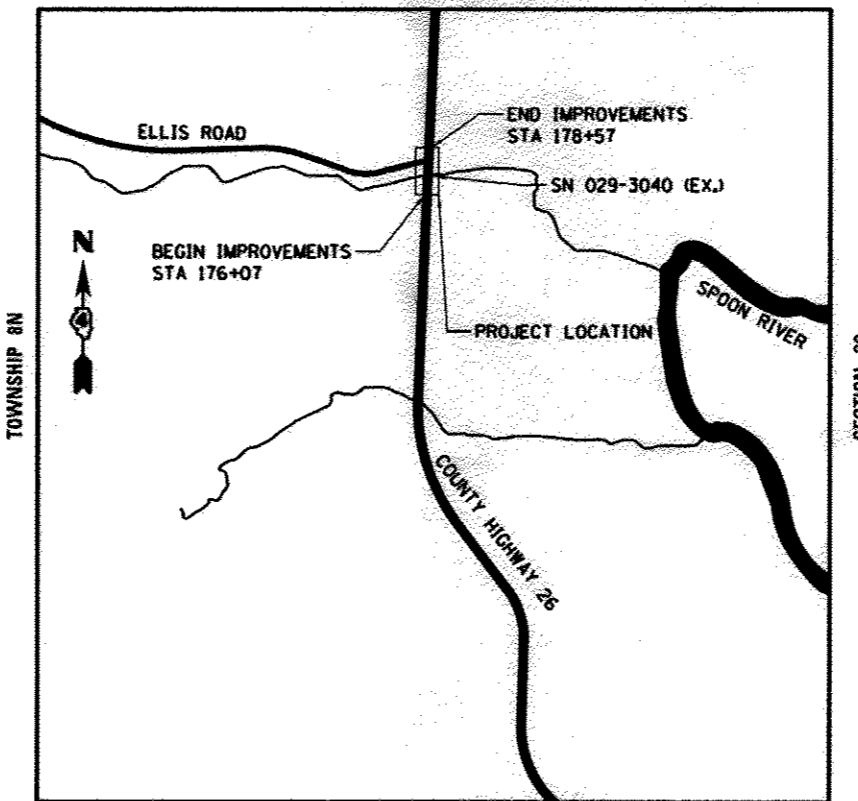
COUNTY HIGHWAY 26
OVER UNNAMED TRIBUTARY OF THE SPOON RIVER
FULTON COUNTY
HIGHWAY BRIDGE PROGRAM
SECTION 11-00143-00-BR
PROJECT NO. BROS-0057 (033)
JOB NO. C-94-031-11

F.A. RTE.	SECTION	COUNTY	TOTAL SHEETS	SHEET NO.
CH26	11-00143-00-BR	FULTON	23	1
ILLINOIS CONTRACT NO. 00597				



LIST OF STANDARDS

- | | |
|-------------|---|
| 000001-06 | STANDARD SYMBOLS, ABBREVIATIONS AND PATTERNS |
| 001001-02 | AREAS OF REINFORCEMENT BARS |
| 280001-07 | TEMPORARY EROSION CONTROL SYSTEMS |
| 515001-03 | NAME PLATES FOR BRIDGES |
| 635001-01 | DELINEATORS |
| 701006-04 | OFFROAD OPERATIONS, 2L, 2W, 15' TO 24" FROM PAVEMENT EDGE |
| 701901-02 | TRAFFIC CONTROL DEVICES |
| B.L.R. 21-9 | TYPICAL APPLICATION OF TRAFFIC CONTROL DEVICES FOR CONSTRUCTION ON RURAL LOCAL HIGHWAYS |
| B.L.R. 22-7 | TYPICAL APPLICATION OF TRAFFIC CONTROL DEVICES FOR CONSTRUCTION ON RURAL LOCAL HIGHWAYS |



RANGE 2E
GROSS LENGTH = 250 FT. = 0.05 MILE
NET LENGTH = 250 FT. = 0.05 MILE

J.U.L.I.E.
JOINT UTILITY LOCATION INFORMATION FOR EXCAVATION
1-800-892-0123
OR 811

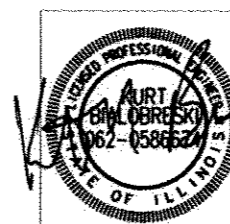


FULL SIZE PLANS HAVE BEEN PREPARED USING STANDARD ENGINEERING SCALES. REDUCED SIZED PLANS WILL NOT CONFORM TO STANDARD SCALES. IN MAKING MEASUREMENTS ON REDUCED PLANS, THE ABOVE SCALES MAY BE USED.

ADT (2010) = 50, SU/MU=0%
HIGHWAY CLASS: IV
FUNCTIONAL CLASSIFICATION: LOCAL ROAD
DESIGN SPEED: 30 MPH
DESIGN POLICY: BLR MANUAL

CAT* 033323-00

**PRINTED BY THE AUTHORITY
OF THE STATE OF ILLINOIS**



DATE SIGNED: 3/27/2013
LIC. EXP. DATE: 11/30/2013
HANSON

APPROVED *March 19 2013*
William C. Kuhn
COUNTY ENGINEER

PASSED *03/27 2013*
[Signature]
DISTRICT ENGINEER OF LOCAL ROADS & STREETS

Releasing For Bid Based on Limited Review *March 28 2013*
[Signature]
DEPUTY DIRECTOR OF HIGHWAYS,
REGION THREE ENGINEER
STATE OF ILLINOIS
DEPARTMENT OF TRANSPORTATION

DATE: 3/19/13

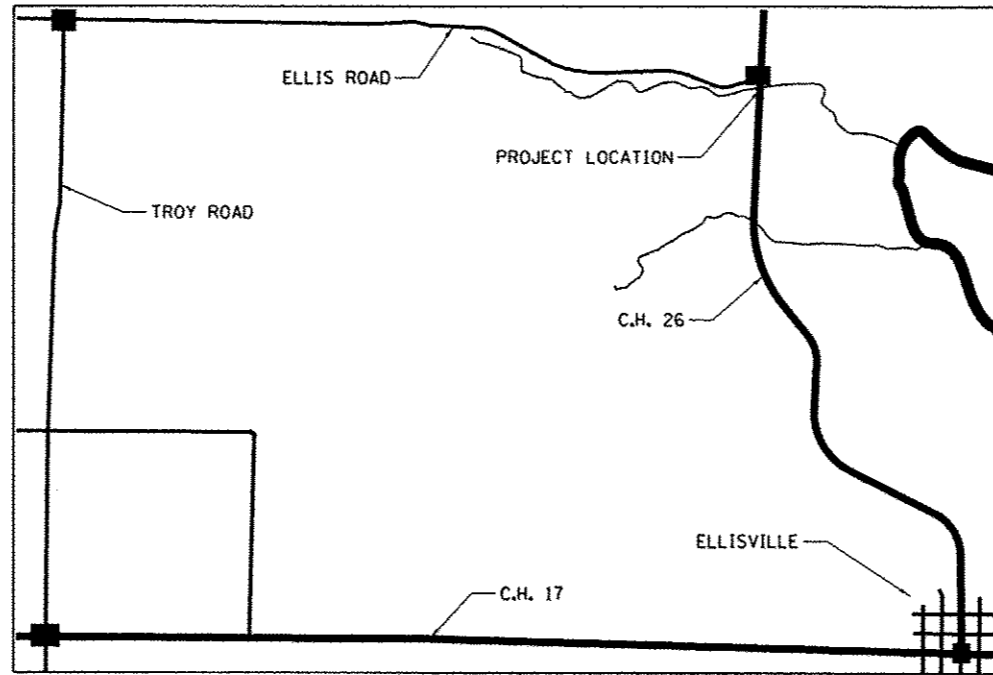
© Copyright Hanson Professional Services Inc. 2013

HANSON
Hanson Professional Services Inc.
7625 N. University St., Suite 200
Peoria, Illinois 61614
Offices Nationwide

GENERAL NOTES

1. THE CONSTRUCTION SHALL BE GOVERNED BY THE "STANDARD SPECIFICATIONS FOR ROAD AND BRIDGE CONSTRUCTION IN ILLINOIS", CURRENT EDITION.
2. ALL REFERENCES TO THE "DEPARTMENT" OR "ENGINEER" IN THE I.D.O.T. STANDARD SPECIFICATIONS SHALL BE CONSTRUED TO MEAN THE OWNER OR HIS AGENT.
3. WHERE SECTION, SUB-SECTION, SUBDIVISION, OR PROPERTY MONUMENTS ARE ENCOUNTERED, THE ENGINEER SHALL BE NOTIFIED BEFORE SUCH MONUMENTS ARE REMOVED. THE CONTRACTOR SHALL PROTECT AND PRESERVE ALL PROPERTY MARKERS UNTIL AN OWNER OR AUTHORIZED SURVEYOR HAS WITNESSED OR REFERENCED THEIR LOCATION.
4. THE CONTRACTOR SHALL FIELD VERIFY ALL DIMENSIONS AND EXISTING CONDITIONS PRIOR TO CONSTRUCTION AND NOTIFY THE ENGINEER OF ANY DISCREPANCY IMMEDIATELY.
5. THE CONTRACTOR SHALL BE RESPONSIBLE FOR REPAIRS TO ANY UTILITY LINES AND EXISTING IMPROVEMENTS TO REMAIN THAT ARE DAMAGED AS A RESULT OF THE WORK.
6. ALL SECTIONS, DETAILS AND NOTES SHOWN ON THE DRAWINGS ARE INTENDED TO BE TYPICAL AND SHALL APPLY TO SIMILAR SITUATIONS ELSEWHERE, UNLESS OTHERWISE SHOWN.
7. ALL THE ELEVATIONS, STATIONS, AND OFFSETS SHOWN ON THE PLANS SHALL BE FIELD VERIFIED BY THE CONTRACTOR PRIOR TO CONSTRUCTION.
8. THE CONTRACTOR IS RESPONSIBLE FOR OBTAINING ALL NECESSARY PERMITS.
9. EXCESS MATERIAL, IF NOT USED FOR OTHER ON-SITE PURPOSES, SHALL BE HAULED OFF-SITE AT CONTRACTOR'S EXPENSE.
10. THE WORK AREA SHALL BE POSITIVELY DRAINED DURING CONSTRUCTION. FINAL GRADES SHALL BE PROTECTED AGAINST DAMAGE FROM EROSION, SEDIMENTATION, AND TRAFFIC.
11. THE OWNER RESERVES THE RIGHT TO REDUCE ANY QUANTITY OR DELETE PAY ITEMS FROM THIS CONTRACT. NO ADDITIONAL COMPENSATION WILL BE ALLOWED.
12. APPLICATION RATES:
NUTRIENTS: 90 LB/ACRE
13. THE CONTRACTOR SHALL USE ANY ON SITE MATERIAL DEEMED SUITABLE BY THE ENGINEER BEFORE ANY NEW FILL IS HAULED TO THE SITE.

14. CONTRACTOR SHALL BE RESPONSIBLE FOR LOCATING ALL EXISTING UNDERGROUND UTILITIES PRIOR TO EXCAVATION.
15. CONTRACTORS BIDDING THIS PROJECT SHALL VISIT THE SITE BEFORE BIDDING.
16. A DETOUR ROUTE WILL BE MARKED AND SIGNS WILL BE INSTALLED PER STANDARD 701901-02 AND BLR 22-7 AT INTERSECTIONS NOTED ON THE MAP BELOW.



17. THE REMOVAL AND REPLACEMENT OF ANY EXISTING SIGNS AND SIGN POSTS DEEMED TO BE OBSTRUCTIONS TO CONSTRUCTION ACTIVITIES OR LISTED IN THE SCHEDULE OF QUANTITIES SHALL BE INCLUDED IN THE COST OF REMOVE EXISTING STRUCTURES.

LEGEND

- ▲ CONTROL POINT
- ⊞ EXISTING TELEPHONE PEDESTAL
- EXISTING GUY
- EXISTING POWER POLE
- ⊥ EXISTING SIGN
- ⊠ EXISTING R.O.W. MARKER
- TELEPHONE
- PIPE CULVERT
- OVERHEAD ELECTRIC
- FENCE
- EXISTING R.O.W.
- EXISTING CROPLINE

UTILITIES

MID CENTURY TELEPHONE CO-OP
285 MID CENTURY LANE
FAIRVIEW, IL 61432
ATTN: JERRY FOX
309-778-8611

UTILITY NOTE

THE LOCATIONS OF THOSE BURIED AND ABOVEGROUND UTILITIES SHOWN ARE APPROXIMATE, ARE SHOWN FOR CONTRACTOR INFORMATIONAL USE ONLY, AND ARE NOT TO BE REFERENCED FOR CONSTRUCTION PURPOSES. THE IMPLIED PRESENCE OR ABSENCE OF UTILITIES IS NOT TO BE CONSTRUED BY THE OWNER, ENGINEER, CONTRACTOR, OR SUBCONTRACTORS TO BE AN ACCURATE AND COMPLETE REPRESENTATION OF UTILITIES THAT MAY OR MAY NOT EXIST ON THE CONSTRUCTION SITE. BURIED AND ABOVEGROUND UTILITY LOCATION, IDENTIFICATION, AND MARKING ARE THE SOLE RESPONSIBILITY OF THE CONTRACTOR. REROUTING, DISCONNECTION, PROTECTION, ETC. OF ANY UTILITIES MUST BE COORDINATED AMONG THE CONTRACTOR, UTILITY COMPANY, AND OWNER. SITE SAFETY, INCLUDING THE AVOIDANCE OF HAZARDS, ASSOCIATED WITH BURIED AND ABOVEGROUND UTILITIES REMAIN THE SOLE RESPONSIBILITY OF THE CONTRACTOR.

© Copyright Hanson Professional Services Inc. 2013
HANSON
 Hanson Professional Services Inc.

DATE	BY
1/10/13	1/10/13
2/1/13	2/1/13
3/25/13	3/25/13

FILE NAME	USER NAME	DESIGNED	REVIS	STATE OF ILLINOIS DEPARTMENT OF TRANSPORTATION	FULTON CO HWY 26 GENERAL NOTES AND LEGEND	F.A. RTE.	SECTION	COUNTY	TOTAL SHEETS	SHEET NO.	
0:\passe_work\do_not_delete\40234104	anuter.02846	DRAWN	REVIS			CH26	11-00143-00-BR	FULTON	23	2	
Default	BL0137-8810-generals.dwg	CHECKED	REVIS			CONTRACT NO. 89597					
	BL01 DATE	DATE	REVIS			ILLINOIS FED. AID PROJECT BR05 0057 10321					
	BL01 DATE	3-26-13		SCALE: N/A	SHEET 2 OF 23 SHEETS	STA.	TO STA.				



SUMMARY OF QUANTITIES			
ITEM NUMBER	ITEM	UNIT	QUANTITY
20200100	EARTH EXCAVATION	CU YD	1497
21101625	TOPSOIL FURNISH AND PLACE, 6"	SQ YD	449
25100630	EROSION CONTROL BLANKET	SQ YD	288
28000400	PERIMETER EROSION BARRIER	FOOT	572
28000500	INLET AND PIPE PROTECTION	EACH	2
28100211	STONE RIPRAP, CLASS A6	TON	1239
28200200	FILTER FABRIC	SQ YD	598
40200800	AGGREGATE SURFACE COURSE, TYPE B	TON	380
48101200	AGGREGATE SHOULDERS, TYPE B	TON	55
50100100	REMOVAL OF EXISTING STRUCTURES	EACH	1
50200100	STRUCTURE EXCAVATION	CU YD	284
50300225	CONCRETE STRUCTURES	CU YD	39
50300300	PROTECTIVE COAT	SQ YD	321
50400505	PRECAST PRESTRESSED CONCRETE DECK BEAMS (27" DEPTH)	SQ FT	1852
50800205	REINFORCEMENT BARS, EPOXY COATED	POUND	4820
Δ 50901050	STEEL RAILING, TYPE SM	FOOT	136
51201600	FURNISHING STEEL PILES HP12X53	FOOT	456
51202305	DRIVING PILES	FOOT	456
51203600	TEST PILE STEEL HP12X53	EACH	2
51204650	PILE SHOES	EACH	10
51500100	NAME PLATES	EACH	1
59100100	GEOCOMPOSITE WALL DRAIN	SQ YD	47
Δ 66500105	WOVEN WIRE FENCE, 4'	FOOT	74
67100100	MOBILIZATION	L SUM	1
* X5420618	PIPE CULVERTS TO BE CLEANED 18"	FOOT	50
* X5860110	GRANULAR BACKFILL FOR STRUCTURES	CU YD	138
* X7010216	TRAFFIC CONTROL AND PROTECTION, (SPECIAL)	L SUM	1
* XX006343	SEEDING (COMPLETE)	SQ YD	449
Z0013798	CONSTRUCTION LAYOUT	L SUM	1
* Z0022800	FENCE REMOVAL	FOOT	137
* Z0046304	PIPE UNDERDRAINS FOR STRUCTURES 4"	FOOT	170
* XXXX881	MULCH	SQ YD	161

Δ SPECIALTY ITEMS

SIGN REMOVAL SCHEDULE			
			SIGN REMOVAL
STATION	OFFSET	LT/RT	EACH
177+03.77	14.71	LT	1
TOTAL			1

EARTHWORK SUMMARY				
LOCATION	20200100		EMBANKMENT CU YD	EARTHWORK BALANCE WASTE (+) OR SHORTAGE (-) CU YD
	EARTH EXCAVATION CU YD	EXCAVATION TO BE USED IN EMBANKMENT ADJUSTED FOR SHRINKAGE CU YD		
SOUTH OF BRIDGE				
176+07.00	176+55.92	50	37	0
NORTH OF BRIDGE				
177+26.08	178+57.00	164	123	18
CREEK AND BRIDGE				
176+55.92	177+26.08	1283	962	1
TOTAL		1497	1122	19

INLET AND PIPE PROTECTION SCHEDULE			
			28000500 INLET AND PIPE PROTECTION EACH
STATION	OFFSET	LT/RT	EACH
177+52.68	39.79	LT	1
177+99.18	37.76	LT	1
TOTAL			2

LAYOUT: KNB / JAS/01
DRAWN: CJP / 2/1/11
CHECKED: CJP / 3/22/11
DATE: 3/22/11

FILE NAME: c:\pwwork\work\do\l\del\ta\del\40234\114	USER NAME: order\DR46	DESIGNED: KNB	REVISED:
		DRAWN: SIP	REVISED:
		CHECKED: CAL	REVISED:
		DATE: 3-26-13	REVISED:

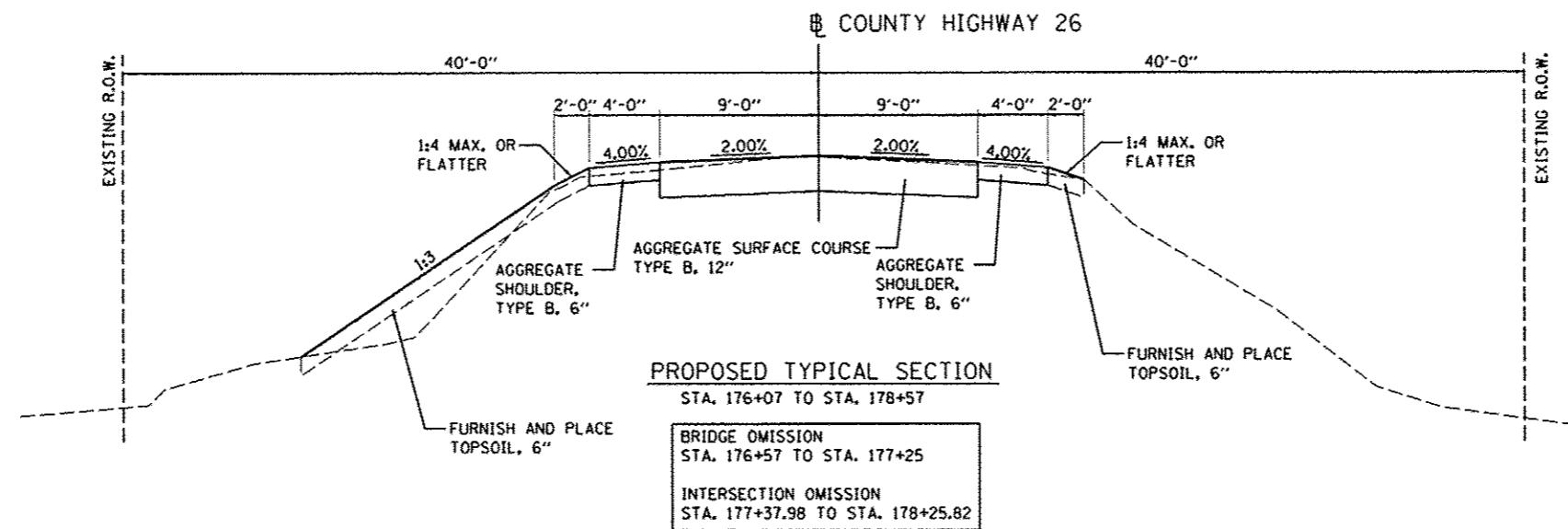
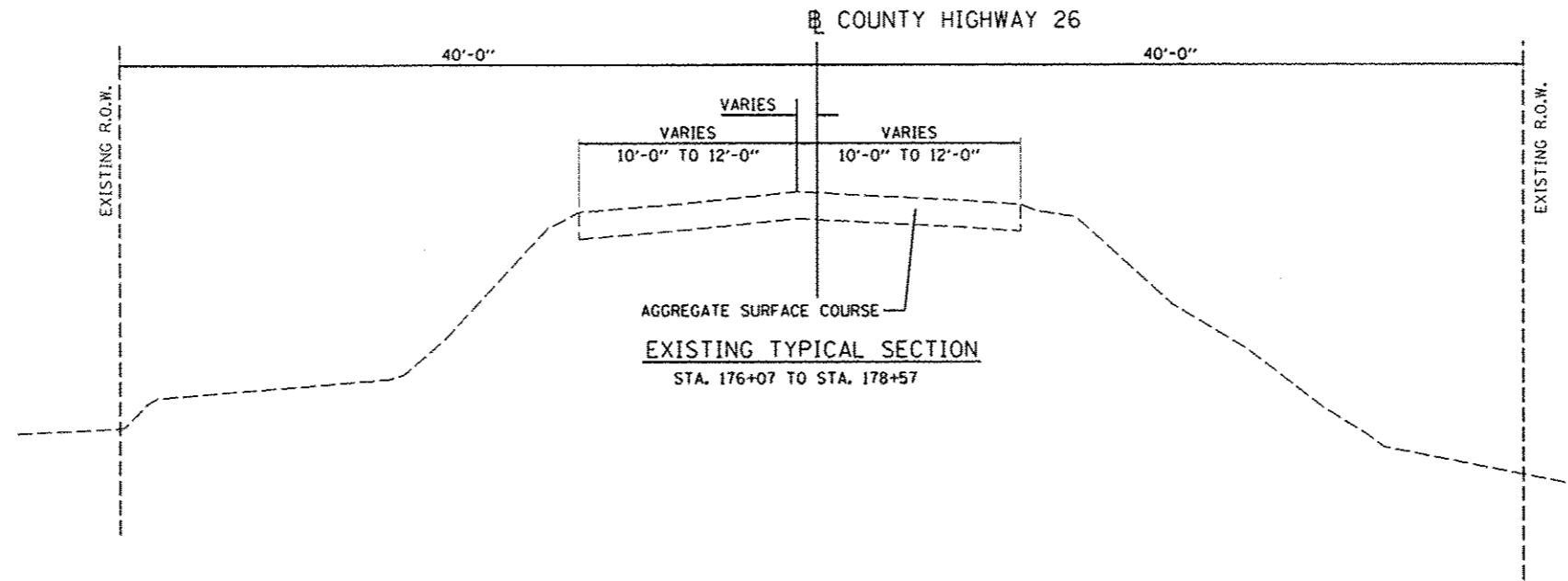
STATE OF ILLINOIS
DEPARTMENT OF TRANSPORTATION

FULTON CO HWY 26
SUMMARY OF QUANTITIES & SCHEDULES

SCALE: N/A SHEET 3 OF 23 SHEETS STA. TO STA.

F.A. RTE.	SECTION	COUNTY	TOTAL SHEETS	SHEET NO.
CH26	11-00143-00-BR	FULTON	23	3
CONTRACT NO.			89597	

ILLINOIS FED. AID PROJECT BR05 0057 10327



DATE	1/21/13
BY	JW
REVISION	2/1/13
BY	JW
REVISION	3/25/13

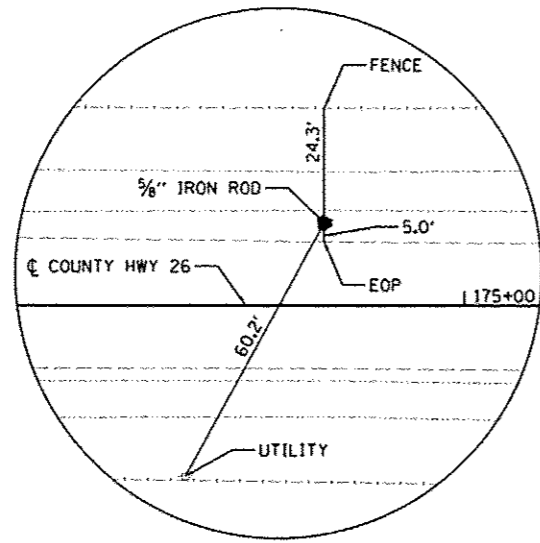
FILE NAME	USER NAME	DESIGNED	REVISED
\\pwwse-work\do.net\delto\des48234\04	andor00646	KNB	-
PL0137-sht-typicA1R84.dgn		SIP	-
PLOT SCALE = 20.0000 1/ in.		CAL	-
DATE		3-26-13	-

**STATE OF ILLINOIS
 DEPARTMENT OF TRANSPORTATION**

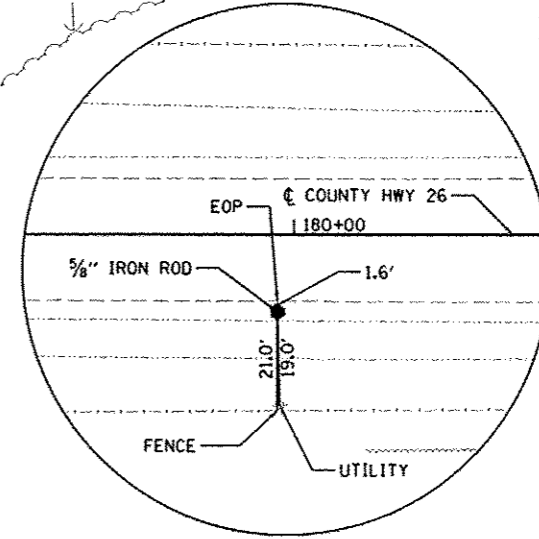
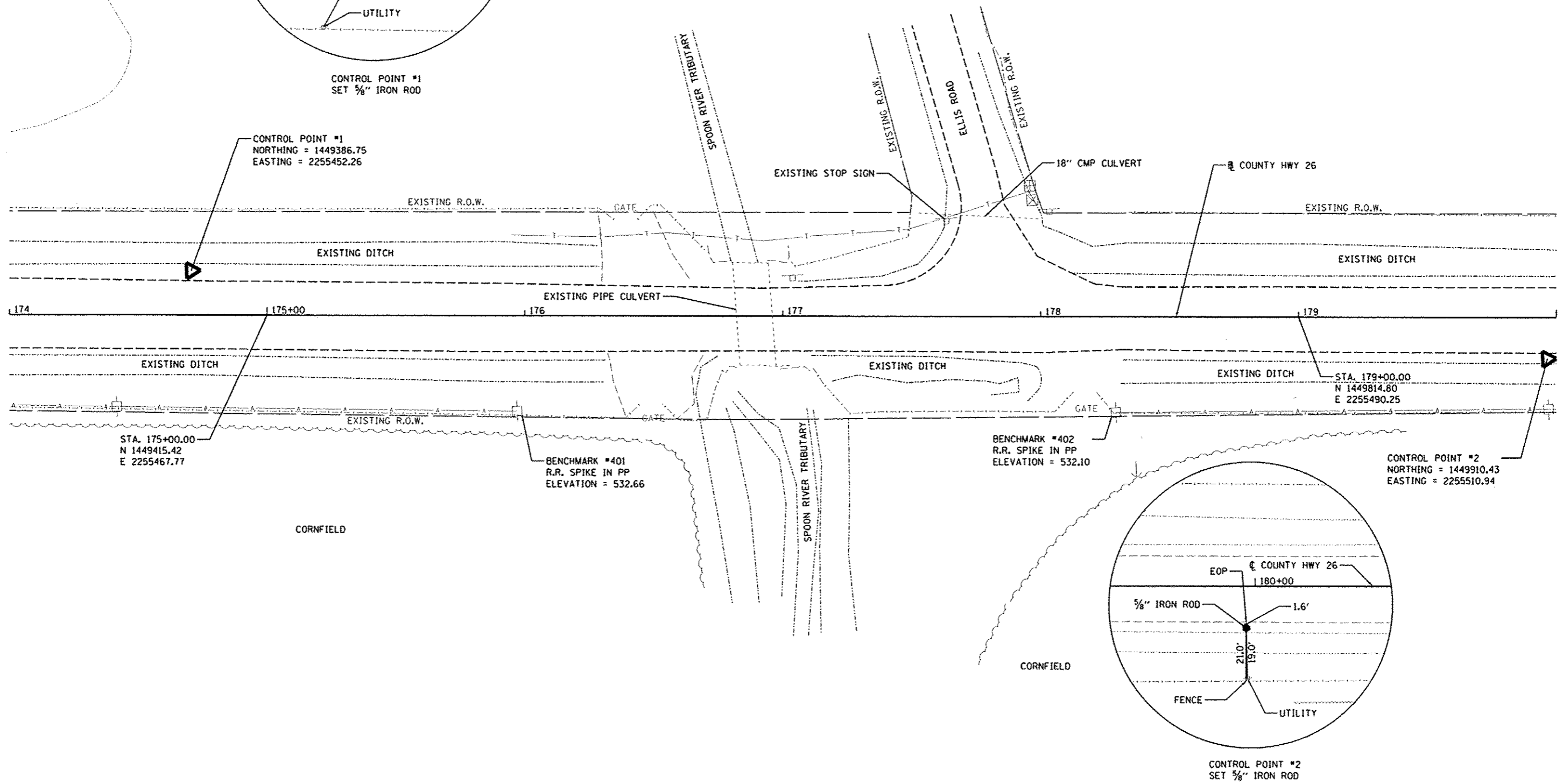
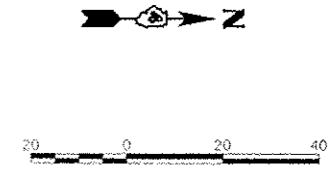
**FULTON CO HWY 26
 TYPICAL SECTIONS**

SCALE: 1"=20' SHEET 4 OF 23 SHEETS STA. TO STA.

F.A. RTE.	SECTION	COUNTY	TOTAL SHEETS	SHEET NO.
CH26	11-00143-00-BR	FULTON	23	4
CONTRACT NO.			89597	
ILLINOIS FED. AID PROJECT BR05 0057 (032)				



CONTROL POINT #1
SET 5/8" IRON ROD



CONTROL POINT #2
SET 5/8" IRON ROD

© Copyright Hanson Professional Services, Inc. 2013
HANSON
 Hanson Professional Services, Inc.

DESIGNED	3/26/13
DRAWN	3/27/13
CHECKED	3/27/13
REVIEWED	3/27/13

FILE NAME =	USER NAME = andr00846	DESIGNED - KNB	REVISED -
cr:\pawse_wrk\do_not_delete\dm48234\04	08137-ah-A18801.dgn	DRAWN - SIP	REVISED -
Default	PLOT SCALE = 3/8"=1'-0"	CHECKED - CAL	REVISED -
	PLOT DATE = 8/27/2013	DATE - 3-26-13	REVISED -

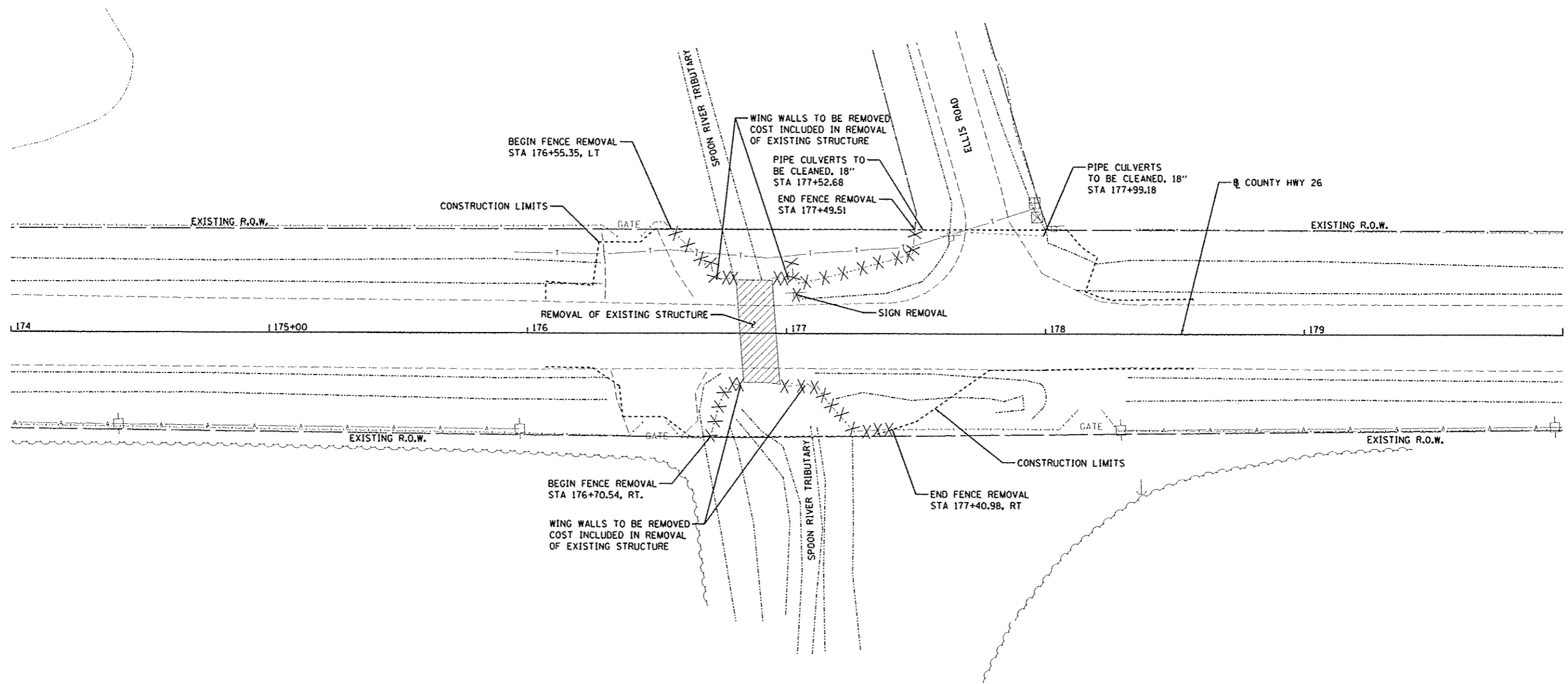
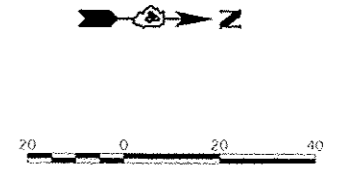
STATE OF ILLINOIS
DEPARTMENT OF TRANSPORTATION

FULTON CO HWY 26
ALIGNMENT, BENCHMARK AND TIES PLAN

SCALE: 1"=20'
 SHEET 5 OF 23 SHEETS STA. 174+00 TO STA. 180+00

F.A. RTE.	SECTION	COUNTY	TOTAL SHEETS	SHEET NO.
CH26	11-00143-00-BR	FULTON	23	5
		CONTRACT NO.	89597	
ILLINOIS FED. AID PROJECT BR05 0057 (032)				

- LEGEND**
- X-X-X FENCE REMOVAL
 - REMOVAL OF EXISTING STRUCTURE
 - X SIGN REMOVAL



© Copyright Hanson Professional Services Inc. 2013
HANSON
 Hanson Professional Services Inc.

LAYOUT	NOV 12/2013
DRAWN	SIP 2/1/13
REVIEWED	KNB 3/25/13

FILE NAME : c:\p\110137\110137.dwg	USER NAME : ender90046	DESIGNED : KNB	REVISED : -
Default		DRAWN : SIP	REVISED : -
		CHECKED : CAL	REVISED : -
		DATE : 3-26-13	REVISED : -

STATE OF ILLINOIS
DEPARTMENT OF TRANSPORTATION

FULTON CO HWY 26
DEMOLITION PLAN

SCALE: 1"=20' SHEET 6 OF 23 SHEETS STA. 174+00 TO STA. 180+00

F.A. RTE.	SECTION	COUNTY	TOTAL SHEETS	SHEET NO.
CH26	11-00143-00-BR	FULTON	23	6
CONTRACT NO. 89597			ILLINOIS FED. AID PROJECT BR05 0057 (032)	

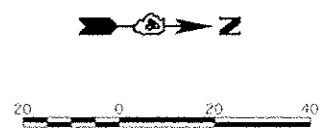
DATE	
BY	
NO.	
PLAN	
NO.	
DATE	
BY	
NO.	
DATE	
BY	
NO.	

© Copyright Hanson Professional Services Inc. 2013
HANSON
 Hanson Professional Services Inc.

DATE	
BY	
NO.	
PROFILE	
NO.	
DATE	
BY	
NO.	

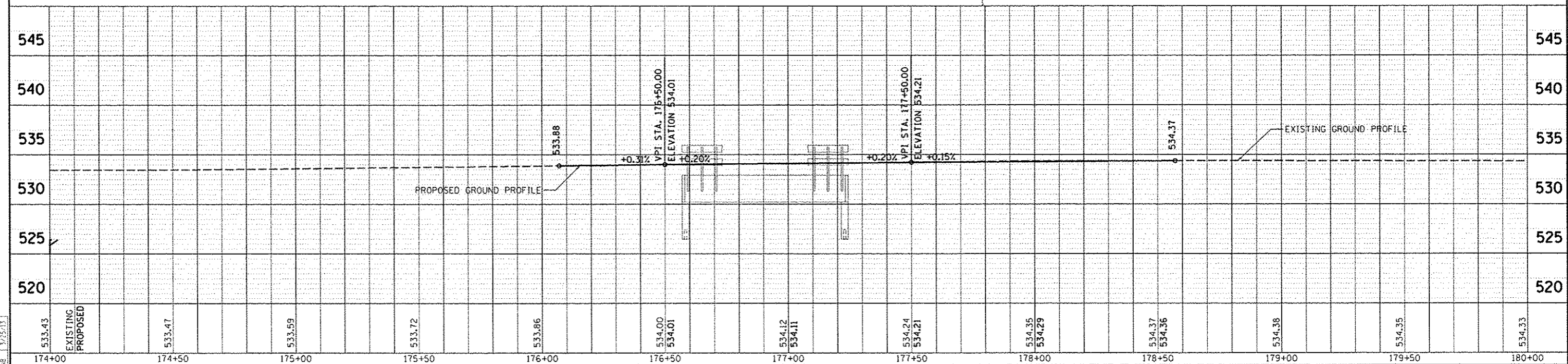
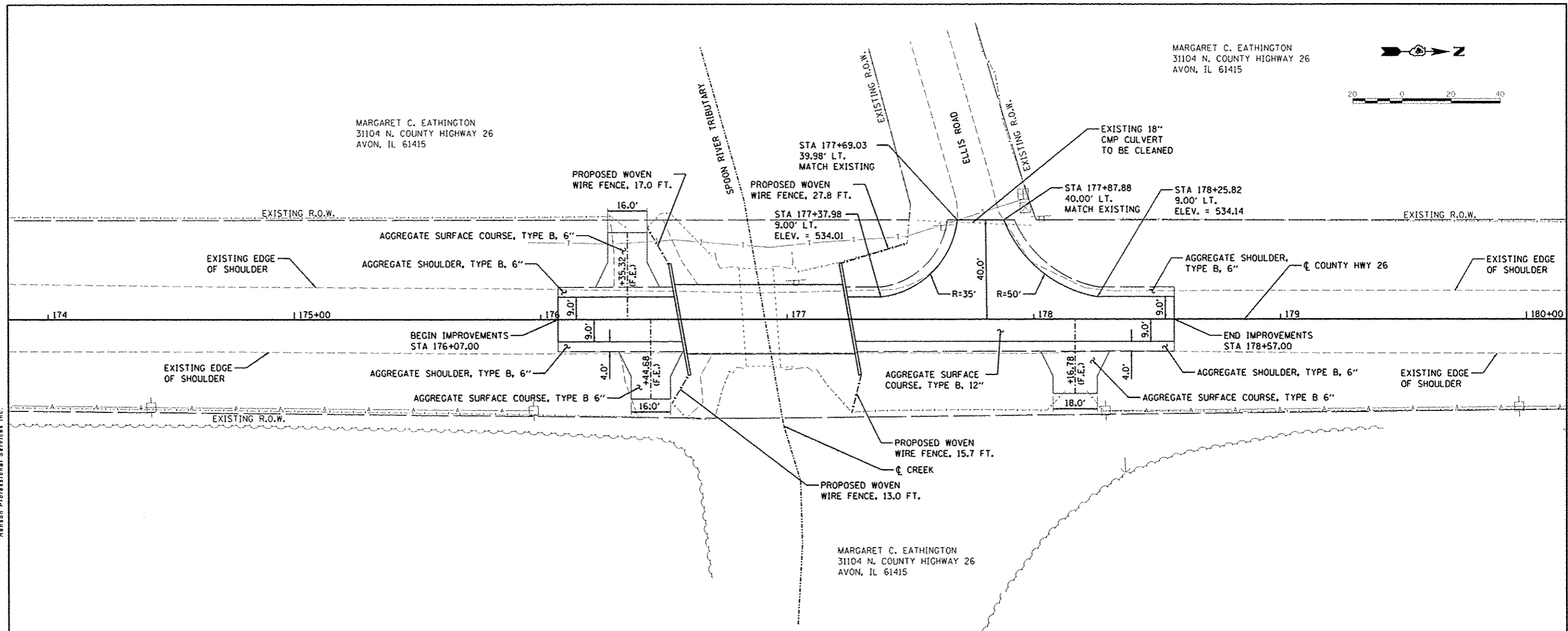
DATE	1/20/13
BY	JMB
NO.	2/1/13
DATE	3/25/13
BY	JMB
NO.	

MARGARET C. EATHINGTON
 31104 N. COUNTY HIGHWAY 26
 AVON, IL 61415






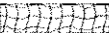
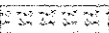
MARGARET C. EATHINGTON
 31104 N. COUNTY HIGHWAY 26
 AVON, IL 61415

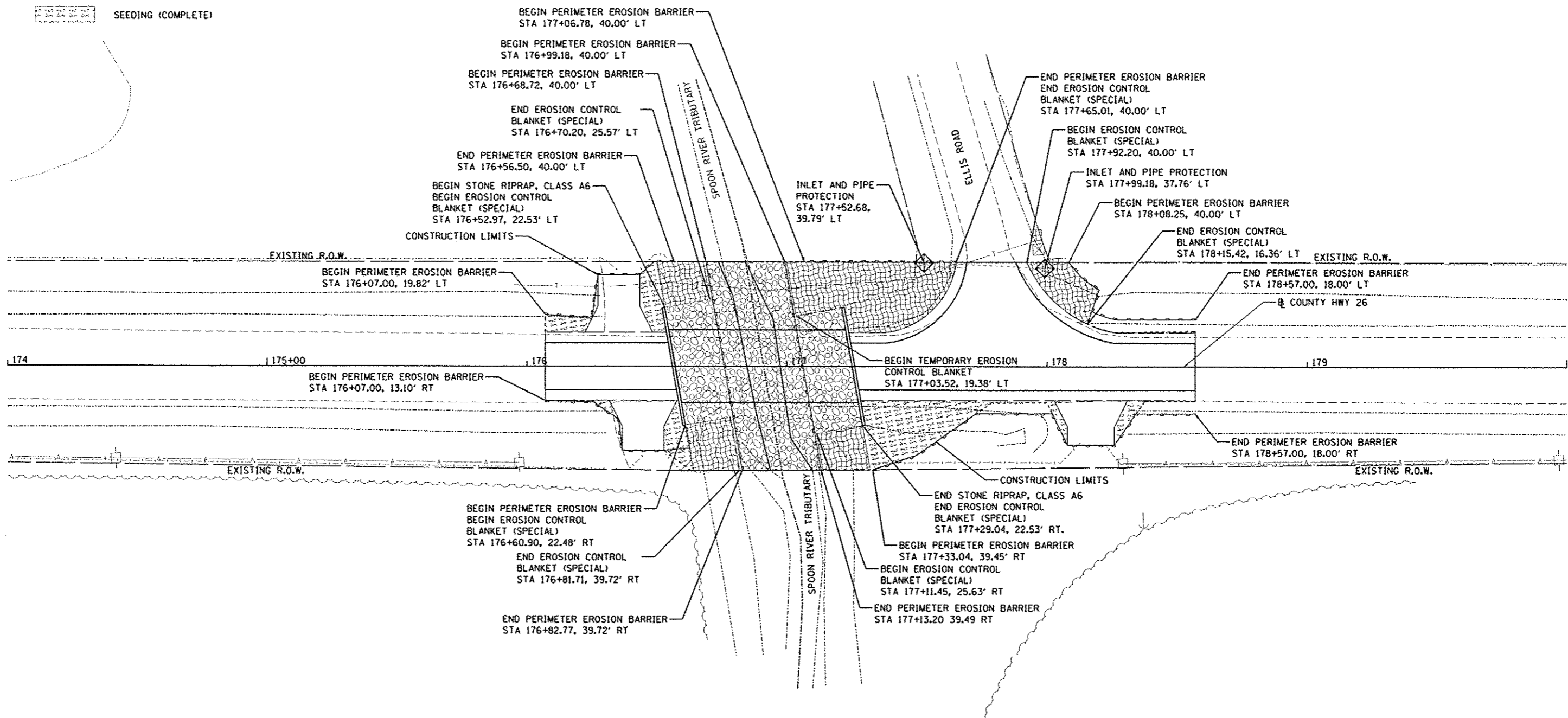
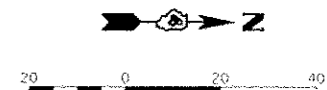
MARGARET C. EATHINGTON
 31104 N. COUNTY HIGHWAY 26
 AVON, IL 61415



533.43	EXISTING	533.47	533.59	533.72	533.86	534.00 534.01	534.12 534.11	534.24 534.21	534.35 534.29	534.37 534.36	534.38	534.35	534.33		
174+00		174+50	175+00	175+50	176+00	176+50	177+00	177+50	178+00	178+50	179+00	179+50	180+00		
FILE NAME: c:\pwise_work\do_not_delete\dm\48234\DWG\13				USER NAME: mcf-20846				DESIGNED: KNB				REVISED: -			
DRAWN: SIP				CHECKED: CAL				DATE: 3-26-13				REVISED: -			
PROJECT: 11-00143-00-BR				SECTION: 11-00143-00-BR				COUNTY: FULTON				TOTAL SHEETS: 23			
SHEET: 7				CONTRACT NO.: 89597				SCALE: 1"=20'				SHEET 7 OF 23 SHEETS			
STA. 174+00				TO STA. 180+00				ILLINOIS FED. AID PROJECT				DRGS 6057 (03/2)			

LEGEND

-  INLET AND PIPE PROTECTION
-  PERIMETER EROSION BARRIER
-  STONE RIPRAP, CLASS A6
FILTER FABRIC
-  EROSION CONTROL BLANKET (SPECIAL)
-  SEEDING (COMPLETE)



© Copyright Hanson Professional Services, Inc. 2013
HANSON
 Hanson Professional Services, Inc.

LAYOUT	ANS	1/20/13
DRAWN	SIP	2/1/13
CHECKED	CAL	3/26/13
REVIEWED	ANS	3/26/13

FILE NAME >	USER NAME >	DESIGNED -	REVISED -
\\ns\work\do_not_delete\des48234\04	andor00846	MGO	
	AL0537\gls-er-00801.dgn	DRAWN -	REVISED -
		SIP	
		CHECKED -	REVISED -
		CAL	
		DATE -	REVISED -
		3-26-13	

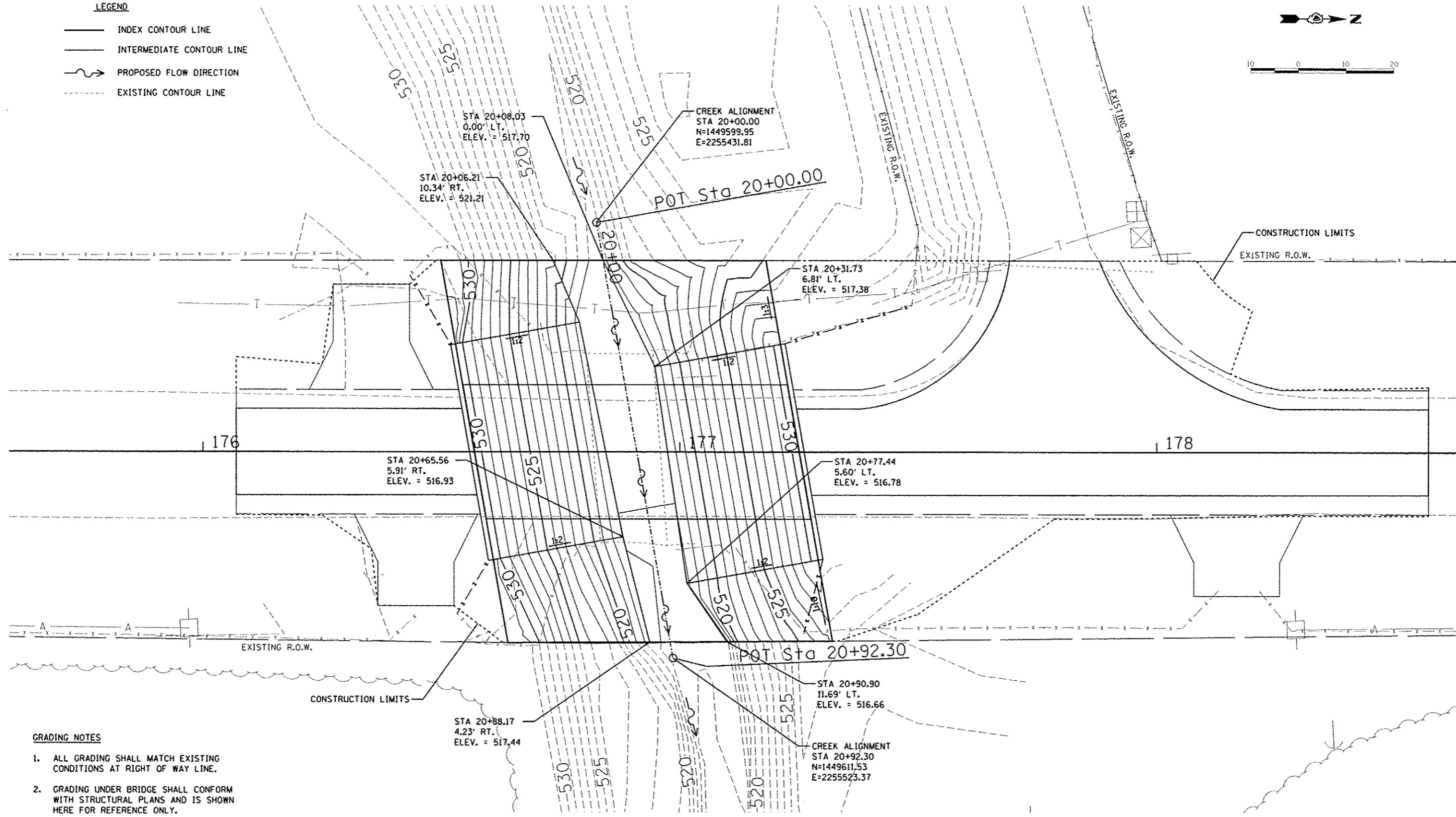
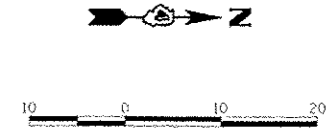
**STATE OF ILLINOIS
DEPARTMENT OF TRANSPORTATION**

FULTON CO HWY 26 EROSION CONTROL PLAN	
SCALE: 1"=20'	SHEET 8 OF 23 SHEETS
STA. 174+00	TO STA. 180+00

F.A. RTE.	SECTION	COUNTY	TOTAL SHEETS	SHEET NO.
CH26	11-00143-00-BR	FULTON	23	8
CONTRACT NO. 89597				
ILLINOIS FED. AID PROJECT BR65 0657 (632)				

LEGEND

- INDEX CONTOUR LINE
- - - INTERMEDIATE CONTOUR LINE
- PROPOSED FLOW DIRECTION
- - - EXISTING CONTOUR LINE



GRADING NOTES

1. ALL GRADING SHALL MATCH EXISTING CONDITIONS AT RIGHT OF WAY LINE.
2. GRADING UNDER BRIDGE SHALL CONFORM WITH STRUCTURAL PLANS AND IS SHOWN HERE FOR REFERENCE ONLY.
3. STATION/OFFSET/ELEVATION CALLOUTS DEFINING BOTTOM OF CHANNEL ARE APPROXIMATE.
4. SEE BRIDGE PLANS FOR CROSS SECTIONS OF RIPRAP AREA.

© Copyright Hanson Professional Services Inc. 2013
HANSON
 Hanson Professional Services Inc.

LAYOUT	ANS	1/20/13
DRAWN	SIP	2/1/13
REVIEWED	WSE	1/22/13

FILE NAME : c:\pwise\work\4do\dot\delete\4ms40234\04	USER NAME : andar.00046	DESIGNED - MGO	REVISOR -
	3/0137-sht-grd-001.dgn	DRAWN - SIP	REVISOR -
		CHECKED - CAL	REVISOR -
		DATE - 3-26-13	REVISOR -

STATE OF ILLINOIS
DEPARTMENT OF TRANSPORTATION

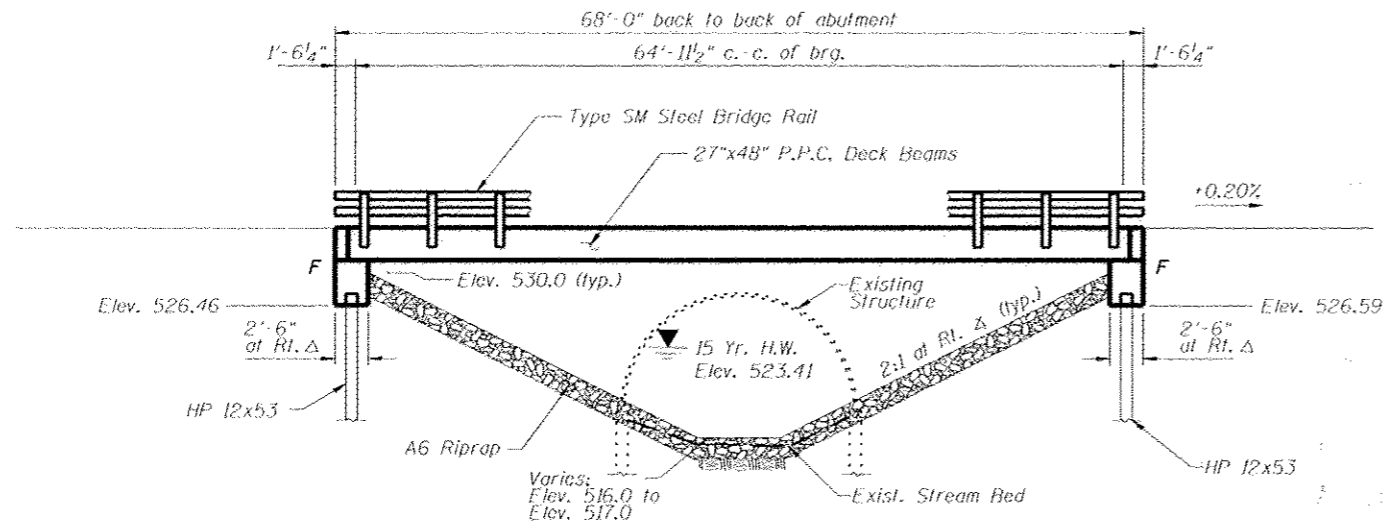
FULTON CO HWY 26 GRADING PLAN	
SCALE: 1"=10'	SHEET 9 OF 23 SHEETS
STA. 176+00	TO STA. 178+00

F.A. RTE.	SECTION	COUNTY	TOTAL SHEETS	SHEET NO.
CH26	11-00143-00-BR	FULTON	23	9
CONTRACT NO. 89597			ILLINOIS FED. AID PROJECT BR05 0057 0032	

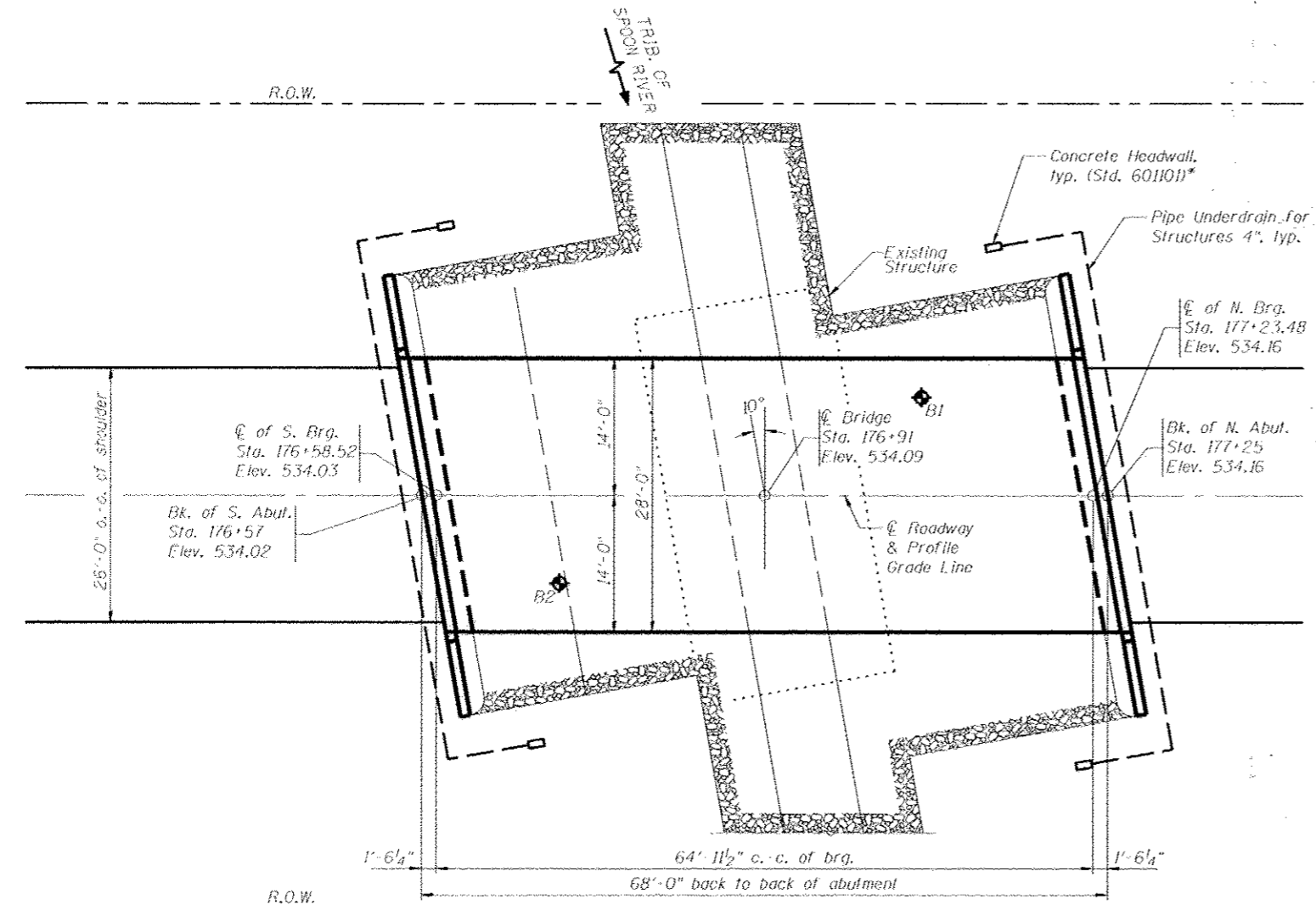
B.M. - Railroad spike in power pole southeast of bridge, Sta. 175+97.09, 36.86' Rt., Elev. 532.66

Existing Structure - Structure No. 029-3040 was constructed in 1953 as Section 45 MFT and consists of a semi-circular, corrugated metal arch culvert on concrete foundation walls. The culvert width is approximately 21 feet, face-to-face of walls. The length of the culvert is approximately 40 feet, end-to-end.

Salvage - None



ELEVATION



PLAN

* Cost of Concrete Headwall included in the cost of Pipe Underdrains for Structures 4".

TRIB. OF SPOON RIVER
BUILT 20... BY
FULTON COUNTY
SEC. 11-00143-00-BR
CH 26 STATION 176+91
STR. NO. 029-3240 LOADING HL-93

LETTERING FOR NAME PLATE

Locate Name Plate at Northwest Corner of Bridge (See Std. 515001)

DESIGN SCOUR ELEVATION TABLE

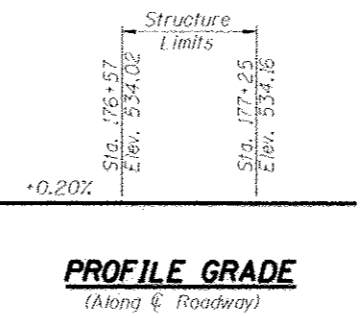
Design Scour Elevation (ft.)	N. Abut.	S. Abut.
	526.59	526.46

WATERWAY INFORMATION

Drainage Area - 2.2 Sq. Mi.		Low Grade Elev. = 534.1'					
Flood	Freq. Yr.	Q C.F.S.	Opening Sq. Ft.	Nat. H.W.E.	Head Fl.	Headwater El.	
Design	15	1010	92	121	523.41	0.78	524.19
Base	100	1690	159	186	525.38	1.70	527.08

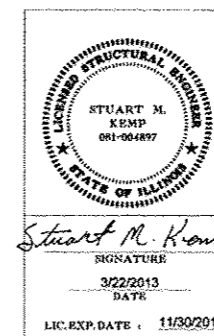
TOTAL BILL OF MATERIAL

Item	Unit	Super	Sub.	Total
Stone Riprap, Class A6	Tons	---	12.39	12.39
Filter Fabric	Sq. Yd.	---	598	598
Structure Excavation	Cu. Yd.	---	284	284
Concrete Structures	Cu. Yd.	---	39.0	39.0
Protective Coat	Sq. Yd.	321	---	321
Precast Prestressed Concrete Deck Beams (27" Depth)	Sq. Ft.	1852	---	1852
Reinforcement Bars, Epoxy Coated	Pound	---	4820	4820
Steel Bridge Rail, Type SM	Foot	136	---	136
Furnishing Steel Pile HP12x53	Foot	---	456	456
Driving Piles	Foot	---	456	456
Test Pile, Steel HP12x53	Each	---	2	2
Pile Shoes	Each	---	10	10
Name Plates	Each	1	---	1
Geocomposite Wall Drain	Sq. Yd.	---	47	47
Granular Backfill for Structures	Cu. Yd.	---	138	138
Pipe Underdrains for Structures 4"	Foot	---	170	170



PROFILE GRADE

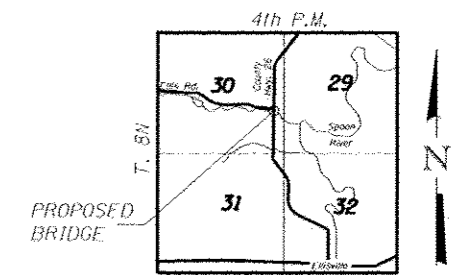
(Along Centerline of Roadway)



Stuart M. Kemp
SIGNATURE
3/22/2013
DATE

LIC. EXP. DATE: 11/30/2014

"I certify that to the best of my knowledge, information and belief, this bridge design is structurally adequate for the design loading shown on the plans. The design is an economical one for the style of structure and complies with requirements of the current 'AASHTO Standard Specifications for Highway Bridges.'"



LOCATION SKETCH

DESIGN SPECIFICATIONS

2012 AASHTO LRFD Bridge Design Specifications - 6th edition

LOADING HL-93

Allow 50 #/sq. ft. for future wearing surface.

DESIGN STRESSES

Super: $f'_c = 6,000$ p.s.i. (P.P.C. Deck Beams)
 $f'_{ci} = 5,000$ p.s.i.
 $f'_s = 270,000$ p.s.i. ($\frac{1}{2}$ " ϕ Strand)
 $f'_{si} = 201,960$ p.s.i. ($\frac{1}{2}$ " ϕ Strand)
 $f_y = 60,000$ p.s.i.
Sub: $f'_c = 3,500$ p.s.i.
 $f_y = 60,000$ p.s.i.

SEISMIC DATA

Seismic Performance Zone (SPZ) = 2
Design Spectral Acceleration at 1.0 sec (SD1) = 0.159
Design Spectral Acceleration at 0.2 sec (SD2) = 0.259
Soil Site Class = E

INDEX OF SHEETS

1. General Plan & Elevation
2. General Notes and Riprap Details
3. P.P.C. Deck Beam Superstructure
4. 24"x48" P.P.C. Deck Beam
5. 24"x48" P.P.C. Deck Beam Details
6. Steel Railing, Type SM
7. Abutments
8. HP Pile Details
9. Boring Logs

**GENERAL PLAN AND ELEVATION
STRUCTURE NUMBER 029-3240**

PROFESSIONAL DESIGN FIRM LICENSE #184-001084

© Copyright Hanson Professional Services Inc. 2013

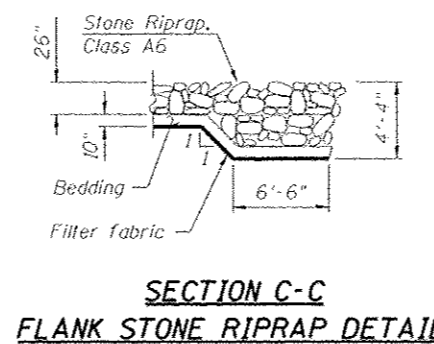
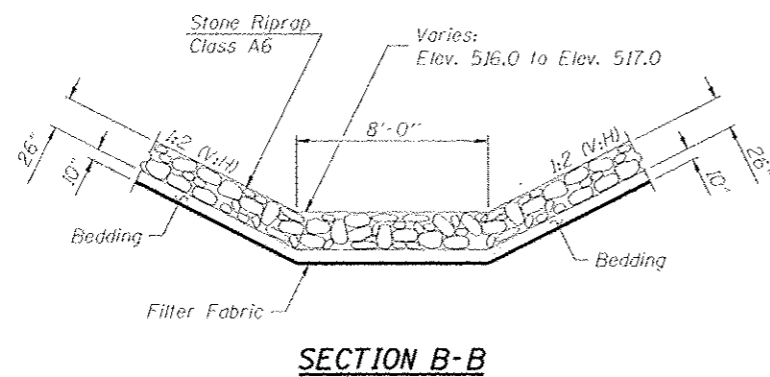
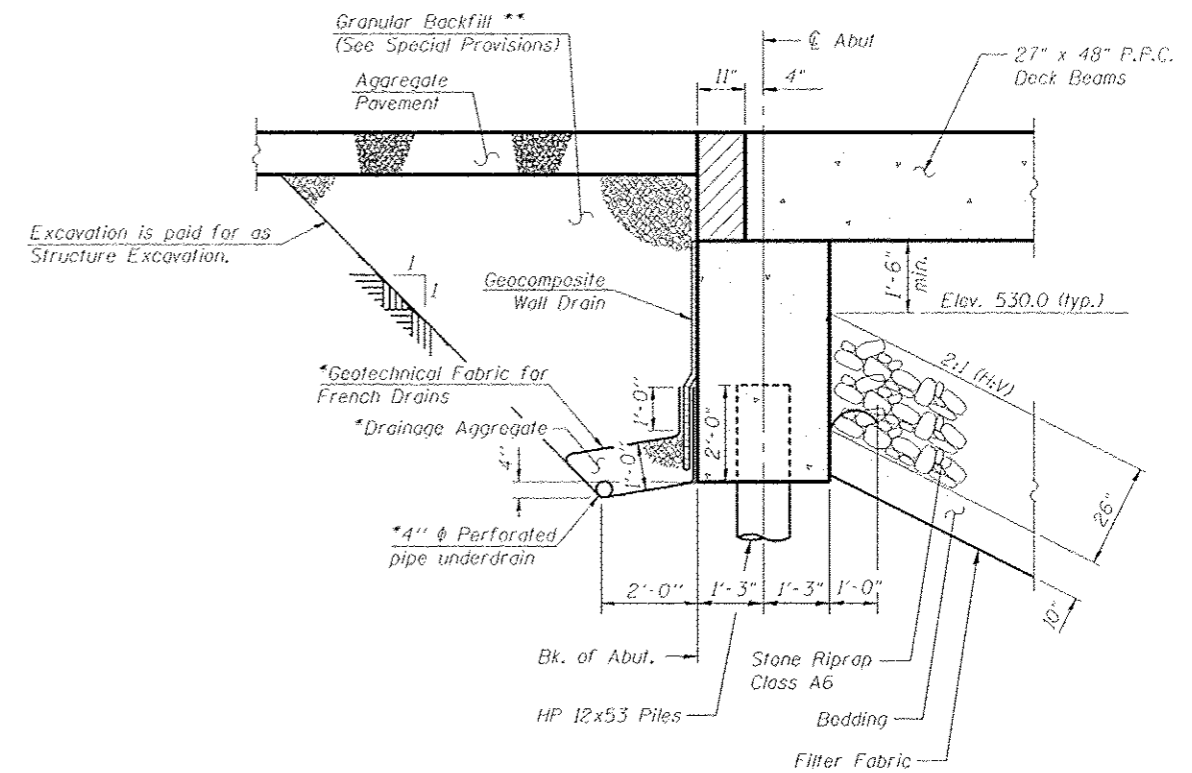
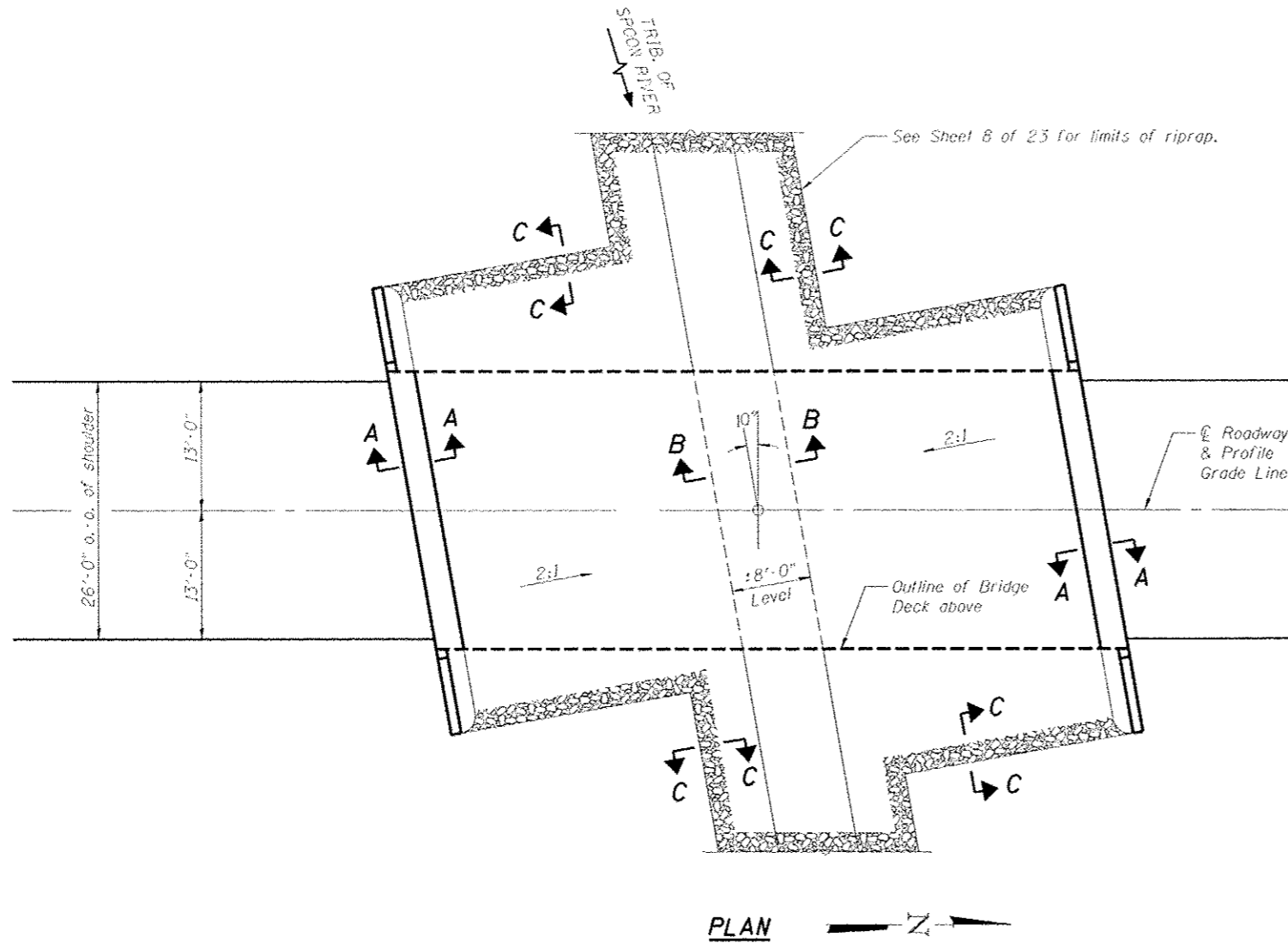


PROJECT NO. 1010137
SHEET NO. 1
9 SHEETS
DATE 3/22/13

CH	SECTION	COUNTY	TOTAL SHEETS	SHEET NO.
26	11-00143-00-BR	Fulton	25	10
CONTRACT NO. 89597				
FED. ROAD DIST. NO. 2 ILLINOIS FED. AID PROJECT				

GENERAL NOTES

1. Reinforcement bars designated (E) shall be epoxy coated.
2. Layout of slope protection system may be varied in the field to suit ground conditions as directed by the Engineer.
3. Protective coat shall be applied to the top of the deck and to the top and exposed face of the wingwalls.



**SECTION A-A
SECTION THRU ABUTMENT**

Dimensions of right angles to abutment

* Included in the cost of Pipe Underdrains for Structures. (See Special Provisions)

** Granular Backfill shall be compacted to the Engineer's satisfaction.

Note:
All drainage system components shall extend to 2'-0" from the end of each wingwall except outlet pipes shall extend as shown on sheet 1 of 9. The pipes shall drain into concrete headwalls. (See Article 601.05 of the Standard Specifications and Highway Standard 601101).

**GENERAL NOTES AND RIP RAP DETAILS
STRUCTURE NUMBER 029-3240**

03/27/2013
 03/27/2013
 03/27/2013
 03/27/2013

DATE	SW	1/20/13
DATE	AW	3/22/13
DATE	CE/RE/PE	3/22/13

PROFESSIONAL DESIGN FIRM LICENSE #184-001084

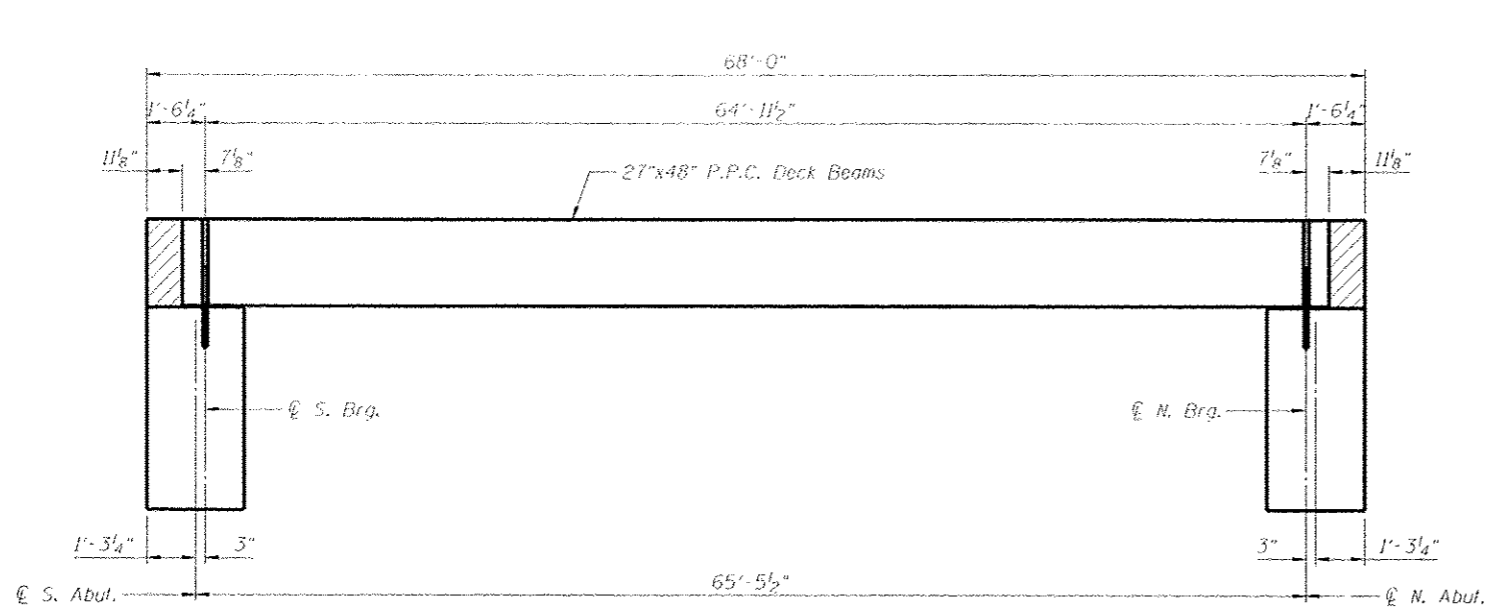
© Copyright Hanson Professional Services Inc. 2013



JOB NO.
10L0137
DATE
3/22/13

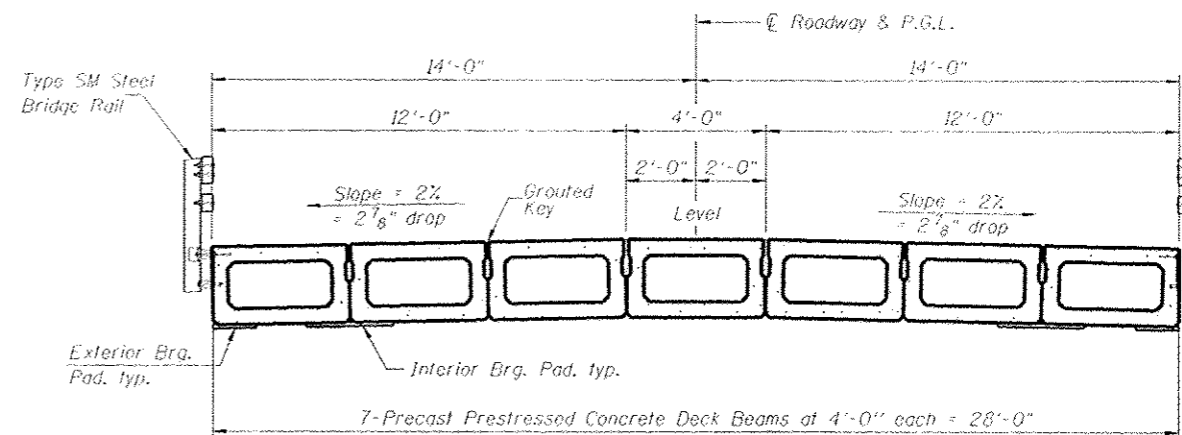
SHEET NO. 2
9 SHEETS

CH	SECTION	COUNTY	TOTAL SHEETS	SHEET NO.
26	11-00143-00-BR	Fulton	23	11
CONTRACT NO. 89597				
FED. ROAD DIST. NO. 2 ILLINOIS FED. AID PROJECT				

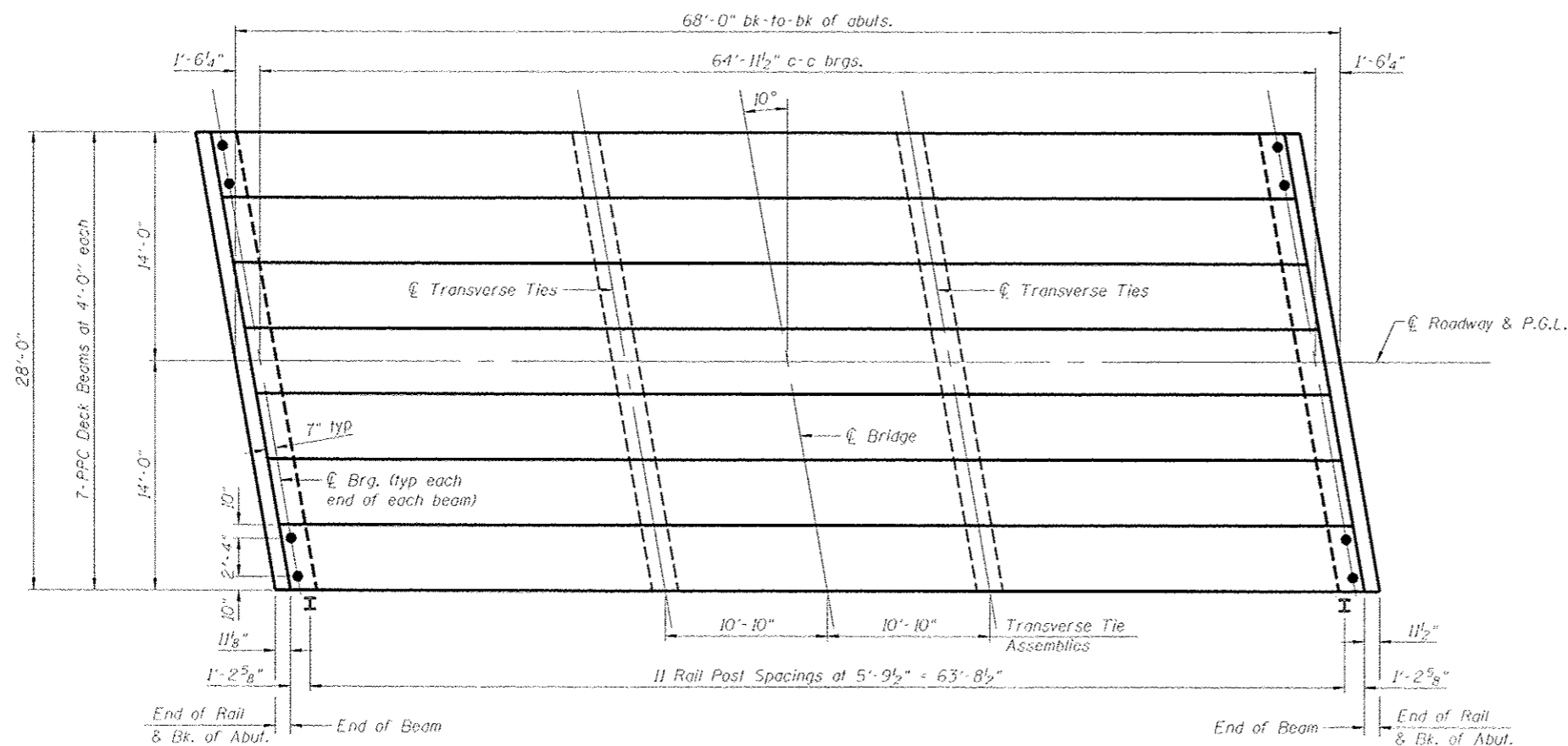


ELEVATION

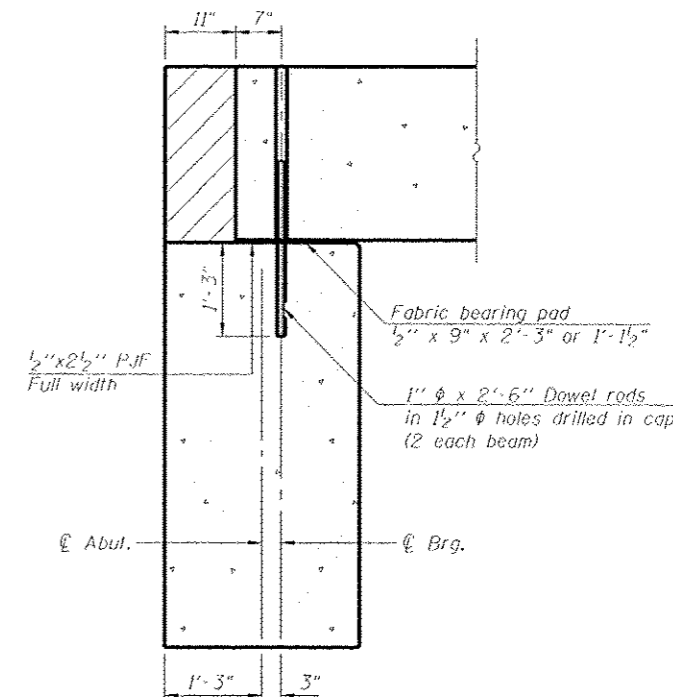
(All Dimensions along \bar{C} of beam)



CROSS SECTION



PLAN



SECTION THRU ABUTMENT

(All Dimensions at right angle to abut.)

NOTES

- After beams have been erected, holes shall be drilled into substructure and anchor dowels placed. Dowel holes shall be filled with non-shrink grout to top of beam and allowed to cure min. 24 hours prior to grouting the shear keys. Longitudinal keys shall be grouted.
- The bearing seat surfaces shall be adjusted by shimming to assure firm and even bearing.
- See sheet 5 of 9 for bearing pad details.
- Hatched area to be poured after deck beams are in place, and will be paid for as Concrete Structures.

**PCC DECK BEAM SUPERSTRUCTURE
STRUCTURE NUMBER 029-3240**

PROFESSIONAL DESIGN FIRM LICENSE #184-001084

© Copyright Hanson Professional Services Inc. 2013



Hanson Professional Services Inc.

JOB NO. 10L0137

SHEET NO. 3

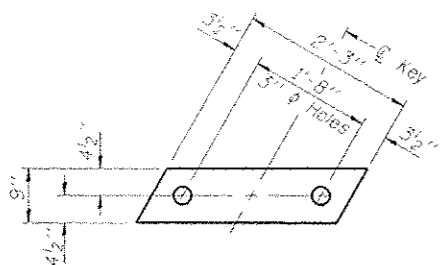
9 SHEETS

DATE 3/22/13

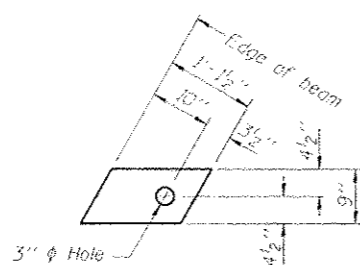
CH	SECTION	COUNTY	TOTAL SHEETS	SHEET NO.
26	11-00143-00-BR	Fulton	23	12
CONTRACT NO. 89597				
FED. ROAD DIST. NO. 2 ILLINOIS FED. AID PROJECT				

03/27/2013
c:\aw\lee_werk\work\delaware\delaware\0293240-89597-5003-Superstructure.dgn

DATE	BY	CHKD
3/22/13	MSM	JSM/13
3/22/13	MSM	
3/22/13	MSM	



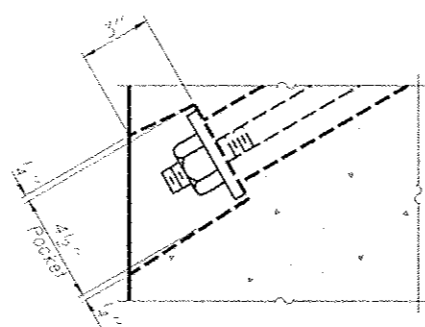
FABRIC BEARING PAD
(Interior)



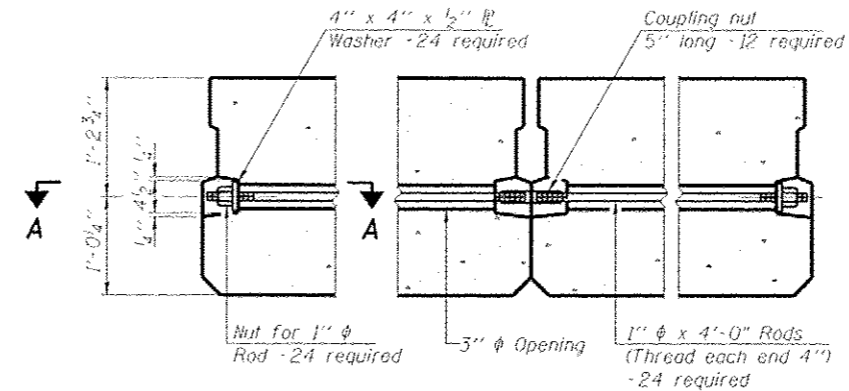
FABRIC BEARING PAD
(Exterior)

FIXED

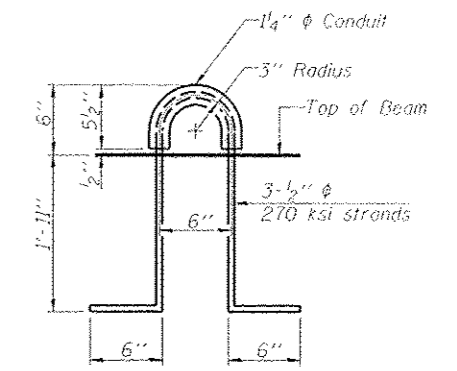
Notes:
All bearing pads shall be 1" thick.
Omit holes when using expansion bearings.
Expansion bearing pad shall be bonded to the substructure.



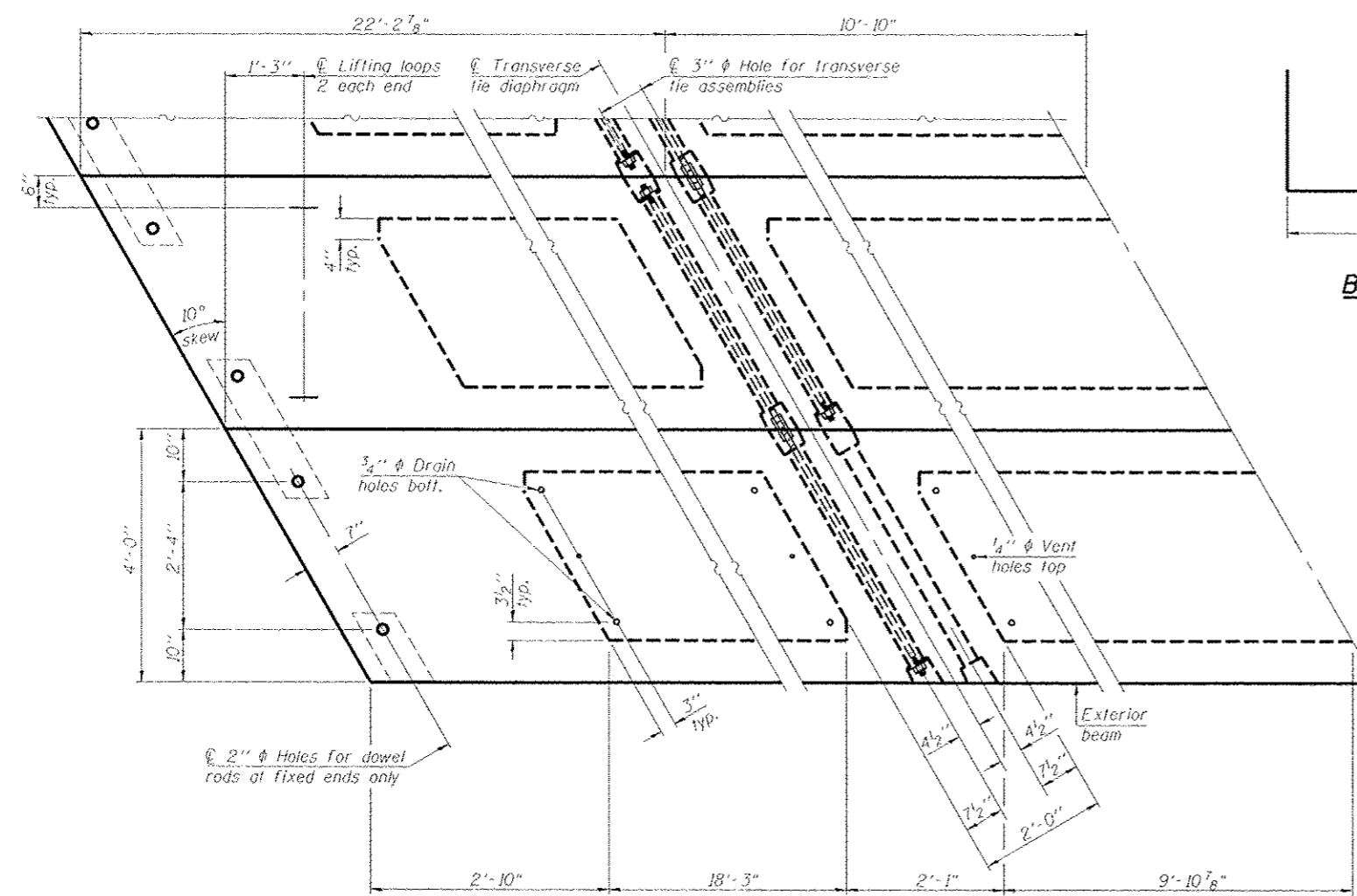
SECTION A-A



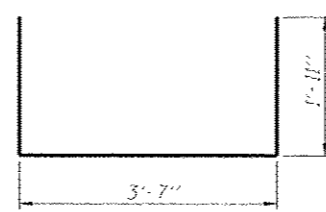
TYPICAL TRANSVERSE TIE ASSEMBLY



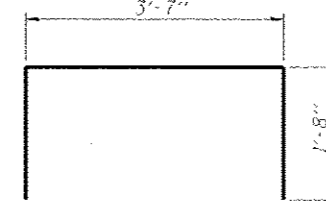
LIFTING LOOP DETAIL



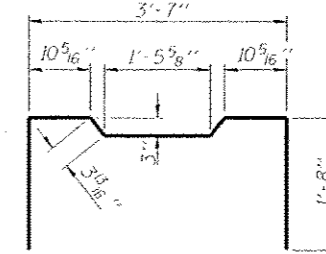
PLAN VIEW



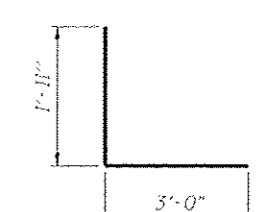
BAR S(E)



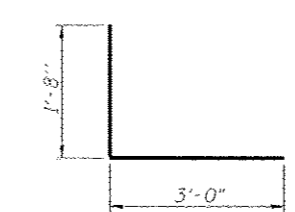
BAR S1(E)



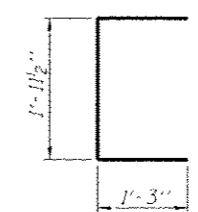
BAR S2(E)



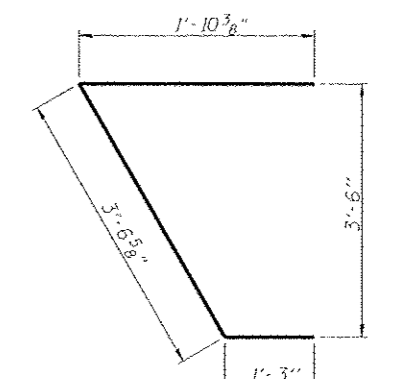
BAR S3(E)



BAR S4(E)



BAR U(E)



BAR U1(E)

NOTES

Prestressing steel shall be uncoated high strength, low relaxation 7-wire strand, Grade 270. The nominal diameter shall be 1/2" and the nominal cross-sectional area shall be 0.153 sq. in.
The 1" rods in the transverse tie assembly shall be tightened to a snug fit and the threads set.
Pockets on exterior faces of bridge shall be filled with grout after transverse tie assembly is in place.
Reinforcement bars shall conform to ASTM A 706, Grade 60. (See Special Provisions).
Two 1/2" fabric adjusting shims of the dimensions of the exterior bearing pad shall be provided for each bearing pad location.
A minimum 2 1/2" lifting pin shall be used to engage the lifting loops during handling.
Corrosion Inhibitor, per Article 1020.05(b)(12) and 1021.06 of the Standard Specifications, shall be used in the concrete for precast prestressed concrete deck beams.
Compressive strength of prestressed concrete, f'c, shall be 6000 psi.
Compressive strength of prestressed concrete at release, f'ci, shall be 5000 psi.

Note: Connect beams in pairs with the transverse tie configuration shown.

BILL OF MATERIAL

Precast Prestressed Conc. Deck Bms. (27" depth)	Sq. Ft.	1852
---	---------	------

27" x 48" PPC DECK BEAM DETAILS
STRUCTURE NUMBER 029-3240

PROFESSIONAL DESIGN FIRM LICENSE #184-001084

© Copyright Hanson Professional Services Inc. 2013

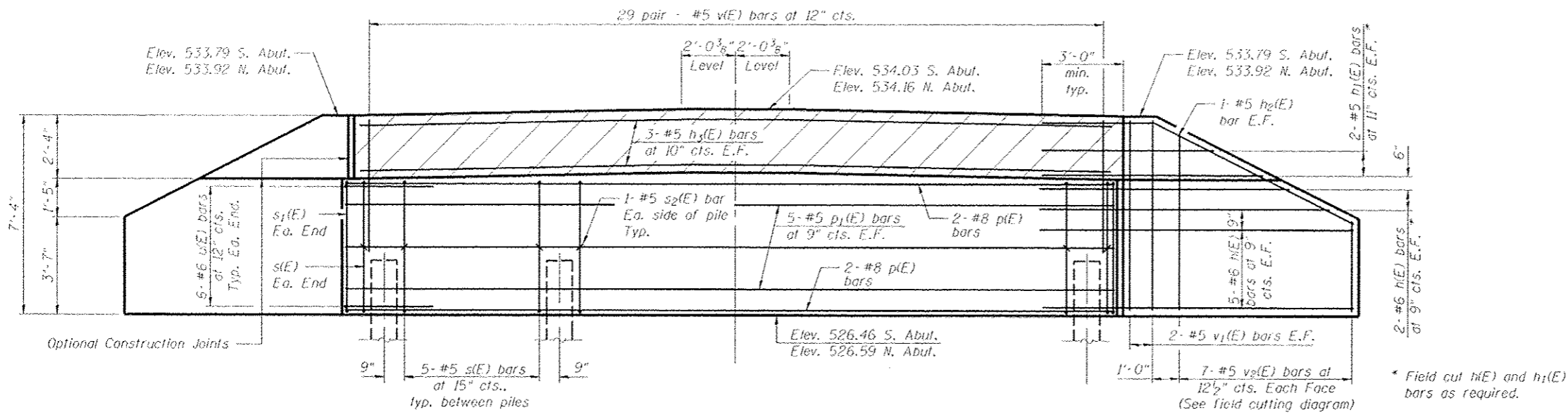
Hanson Professional Services Inc.

NO. 1010137	SHEET NO. 5
DATE 3/22/13	9 SHEETS

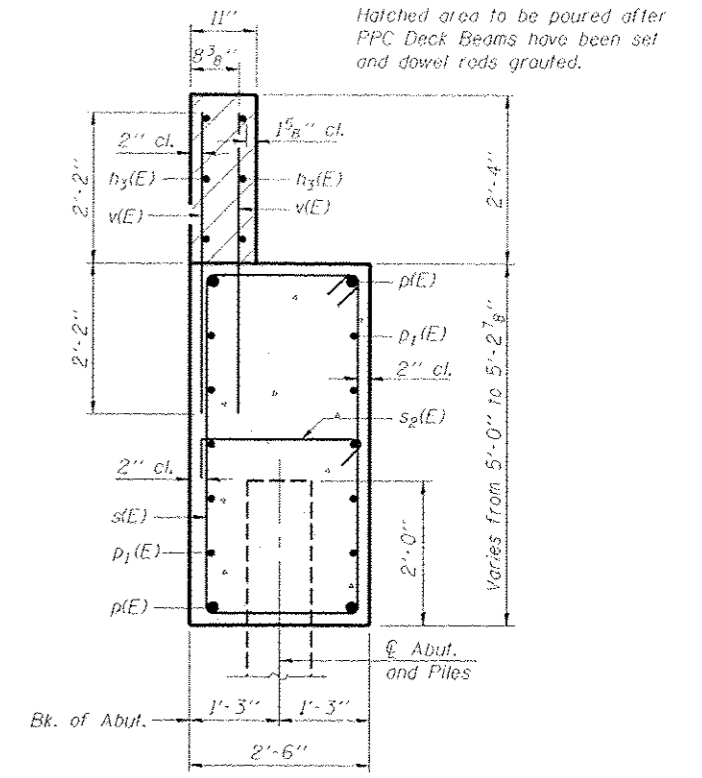
CH	SECTION	COUNTY	TOTAL SHEETS	SHEET NO.
26	11-00143-00-BR	Fulton	23	14
CONTRACT NO. 89597				
FED. ROAD DIST. NO. 2 ILLINOIS FED. AID PROJECT				

03/27/2013 c:\workspace\proj\10_1416\plans\029-3240-89597-SC05-Superstr_Deck2.dwg

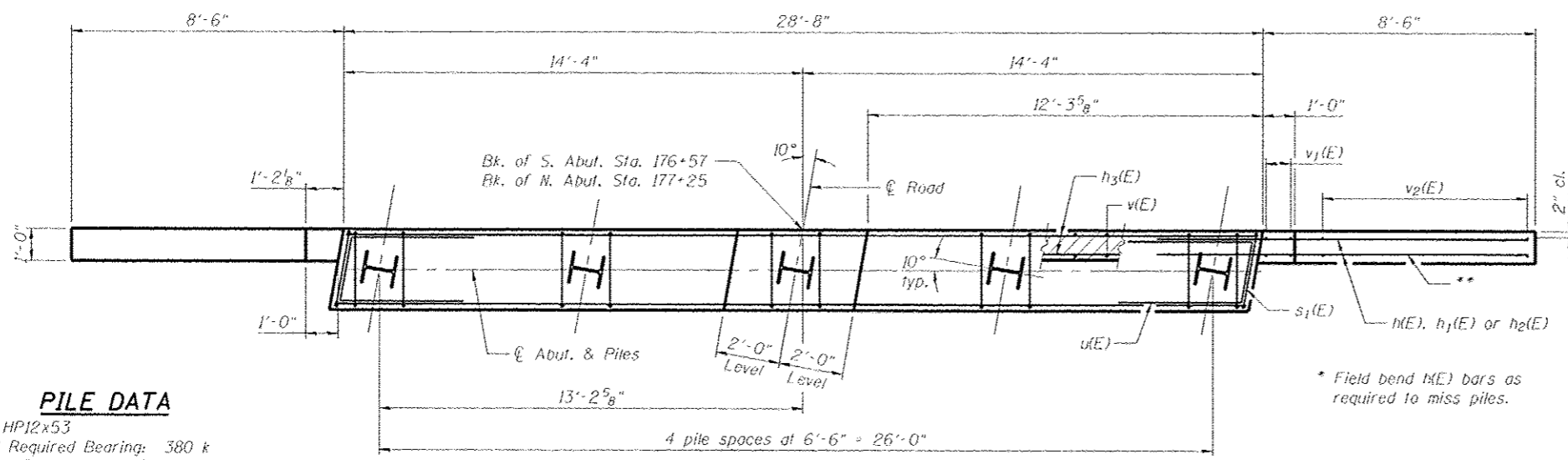
SCALE	DATE
SMA 1/20/13	3/22/13
MDM 3/22/13	
FEJ/EAC	3/22/13



ELEVATION



SEC. THRU ABUT.
Dimensions at right angles to abutment



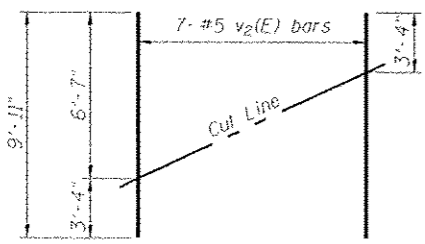
PLAN

PILE DATA

Type: HP12x53
 Nominal Required Bearing: 380 k
 Factored Resistance Available: 209 k
 Est. Length: 55 ft. (N. Abut.) 59 ft. (S. Abut.)
 No. Production Piles: 8 (4 ea. abut.)
 No. Test Piles: 2 (1 ea. abut.)

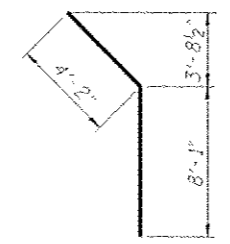
BILL OF MATERIAL FOR TWO ABUTMENTS

Bar	No.	Size	Length	Shape
h(E)	56	#6	11'-6"	—
h1(E)	16	#5	7'-3"	—
h2(E)	8	#5	12'-3"	—
h3(E)	12	#5	28'-4"	—
p(E)	8	#8	28'-4"	—
p1(E)	20	#5	28'-4"	—
s(E)	44	#5	14'-7"	□
s1(E)	4	#5	14'-8"	□
s2(E)	20	#5	3'-2"	└┘
u(E)	24	#6	9'-9"	└┘
v(E)	116	#5	4'-4"	—
v1(E)	16	#5	7'-0"	—
v2(E)	28	#5	9'-11"	—
Structure Excavation		Cu. Yd.	167	
Concrete Structures		Cu. Yd.	39.0	
Reinforcement Bars, Epoxy Coated		Pound	4,820	
Furnishing Steel Piles, HP 12x53		Foot	456	
Driving Piles		Foot	456	
Test Pile, Steel HP 12x53		Each	2	
Pile Shoes		Each	8	

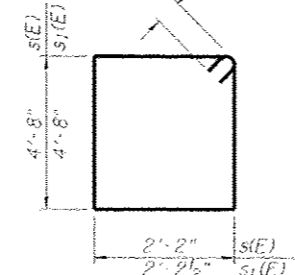


FIELD CUTTING DIAGRAM

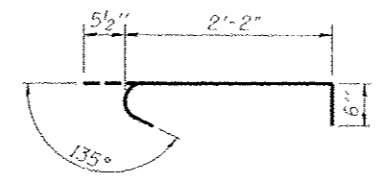
Order v2(E) full length. Cut as shown and use remainder of bars in opposite face.



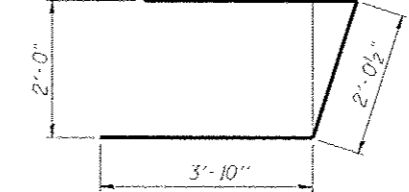
BAR h2(E)



BAR s(E) & s1(E)



BAR s2(E)



BAR u(E)

ABUTMENTS
STRUCTURE NUMBER 029-3240

PROFESSIONAL DESIGN FIRM LICENSE #184-001084
 © Copyright Hanson Professional Services Inc. 2013

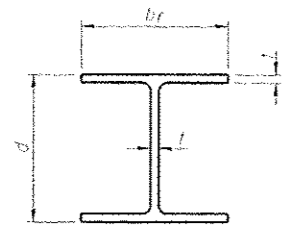
HANSON
Hanson Professional Services Inc.

10/0137 SHEET NO. 7
 9 SHEETS
 3/22/13

CH	SECTION	COUNTY	TOTAL SHEETS	SHEET NO.
26	11-00143-00-BR	Fulton	23	16
CONTRACT NO. 89597				
FED. ROAD DIST. NO. 2 ILLINOIS FED. AID PROJECT				

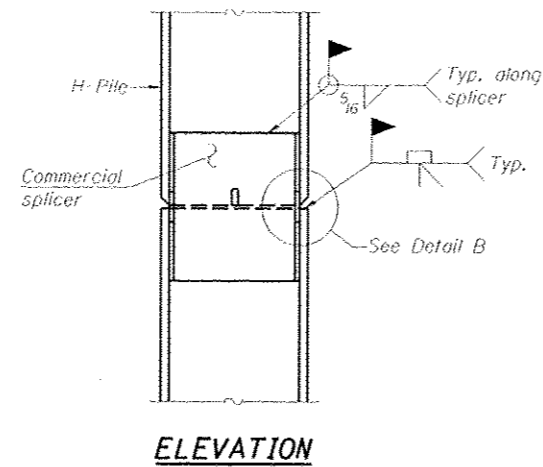
03/27/2013
 c:\pwworking\hanson\proj\029-3240-89597-SC07-Abutment.dwg

LAYOUT	SMA	1/10/13
DRAWN	MSM	3/22/13
REVIEWED	SMA	3/22/13

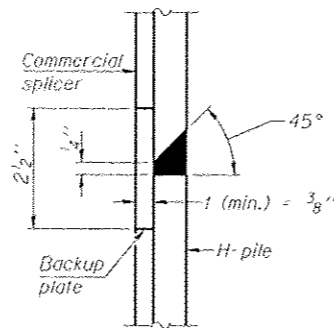


STEEL PILE TABLE

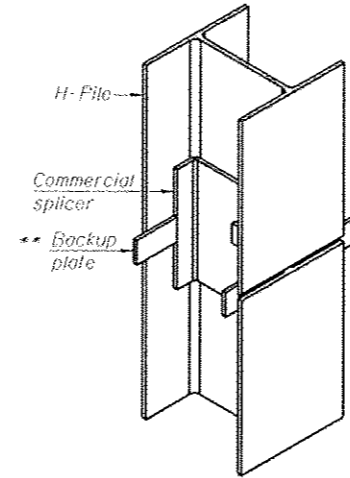
Designation	Depth d	Flange width br	Web and Flange thickness t	Encasement diameter A
HP 14x117	14 1/4"	14 7/8"	13/16"	30"
x102	14"	14 3/4"	1/16"	30"
x89	13 7/8"	14 3/4"	5/8"	30"
x73	13 5/8"	14 5/8"	1/2"	30"
HP 12x84	12 1/4"	12 1/4"	1/16"	24"
x74	12 1/8"	12 1/4"	5/8"	24"
x63	12"	12 1/8"	1/2"	24"
x53	11 3/4"	12"	7/16"	24"
HP 10x57	10"	10 1/4"	3/16"	24"
x42	9 3/4"	10 1/8"	7/16"	24"
HP 8x36	8"	8 9/8"	7/16"	18"



ELEVATION

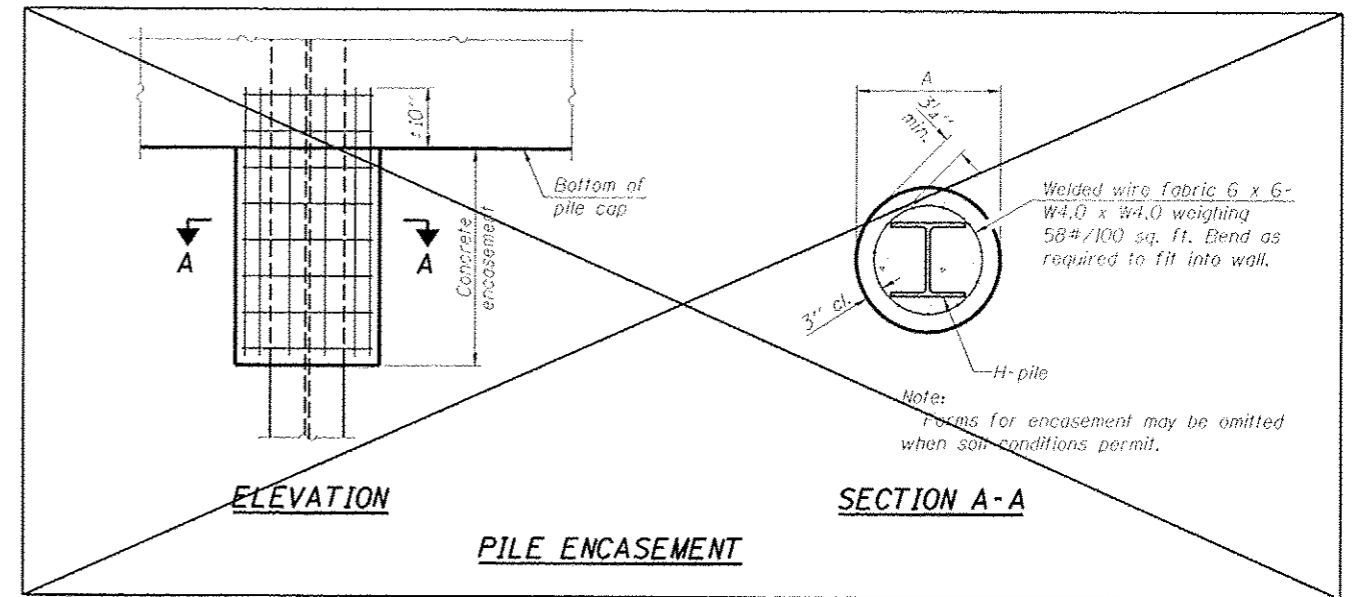


DETAIL "B"



ISOMETRIC VIEW

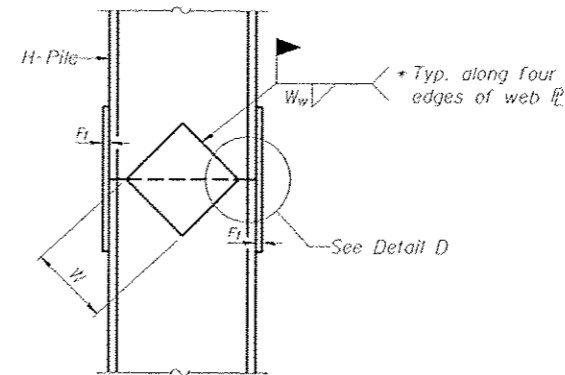
WELDED COMMERCIAL SPLICE



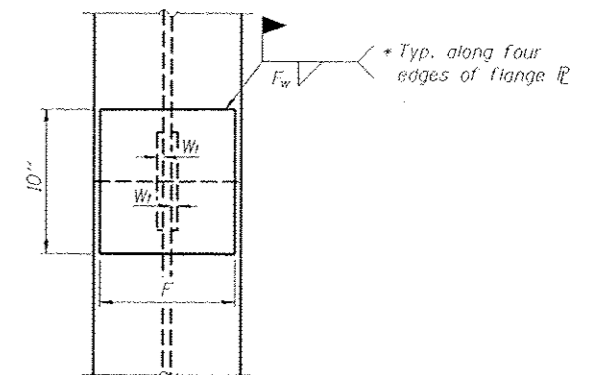
ELEVATION

SECTION A-A

PILE ENCASEMENT



ELEVATION



END VIEW

WELDED PLATE FIELD SPLICE

Designation	F	F _t	F _w	W	W _t	W _w
HP 14x117	12 1/2"	1"	7/8"	7 3/4"	5/8"	1/2"
x102	12 1/2"	7/8"	3/4"	7 3/4"	5/8"	1/2"
x89	12 1/2"	3/4"	1/16"	7 3/4"	5/8"	1/2"
x73	12 1/2"	5/8"	9/16"	7 3/4"	5/8"	1/2"
HP 12x84	10"	7/8"	1/16"	6 1/2"	5/8"	1/2"
x74	10"	7/8"	1/16"	6 1/2"	5/8"	1/2"
x63	10"	5/8"	1/2"	6 1/2"	1/2"	3/8"
x53	10"	5/8"	1/2"	6 1/2"	1/2"	3/8"
HP 10x57	8"	3/4"	9/16"	5 1/4"	1/2"	3/8"
x42	8"	5/8"	9/16"	5 1/4"	1/2"	3/8"
HP 8x36	7"	5/8"	7/16"	4 1/4"	1/2"	3/8"

Note:
The steel H-piles shall be according to AASHTO M270 Grade 50.

PROFESSIONAL DESIGN FIRM LICENSE #184-001084

© Copyright Hanson Professional Services Inc. 2013



REV. NO. 10/0137

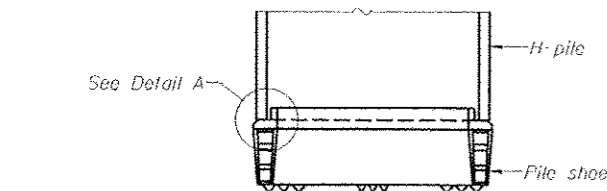
DATE 3/22/13

SHEET NO. 8

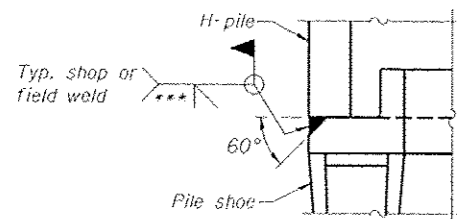
9 SHEETS

CH	SECTION	COUNTY	TOTAL SHEETS	SHEET NO.
26	11-00143-00-BR	Fulton	23	17
CONTRACT NO. 89597				
FED. ROAD DIST. NO. 2 ILLINOIS FED. AID PROJECT				

**HP PILE DETAILS
STRUCTURE NUMBER 029-3240**

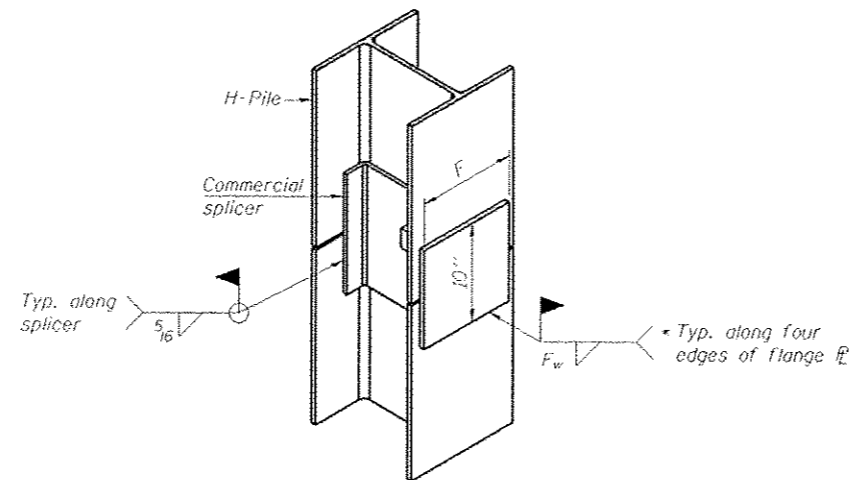


ELEVATION



DETAIL A

H-PILE SHOE ATTACHMENT



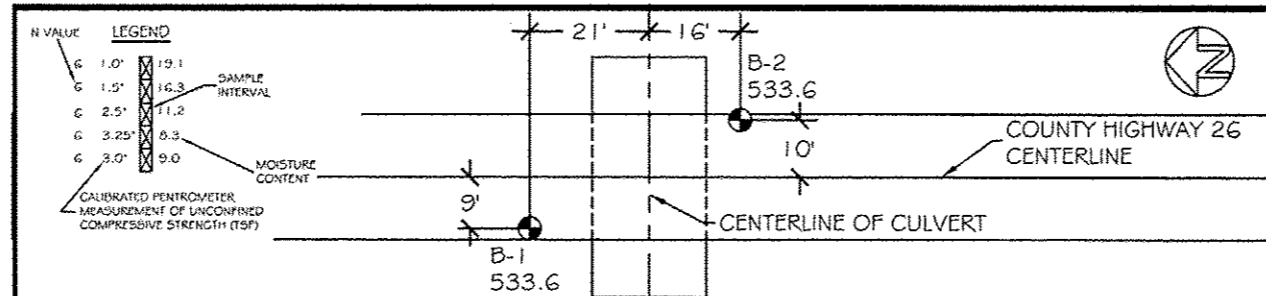
ISOMETRIC VIEW

WELDED COMMERCIAL SPLICE ALTERNATE

- * Interrupt welds 1/4" from end of web and/or each flange.
- ** Remove portions of backup plates that extend outside the flanges.
- *** Weld size per pile shoe manufacturer (5/16" min.).

03/27/2013 c:\pwise\work\166\ref_des\hpdetails\029-3240-89597-5008-H-Piles.dgn

LAYOUT	SM	1/13/13
DRAWN	MM	3/22/13
REVIEWED	SM	3/22/13



ELEVATION	B-1		B-2	
	Soil Description	Penetration (N)	Soil Description	Penetration (N)
530	SANDY LOAM	4	SANDY LOAM	1.25
	SILTY CLAY LOAM	1.5	SANDY LOAM	18
	SILTY LOAM	3	SANDY LOAM	22
	SANDY LOAM	2	SANDY LOAM	21
	SANDY LOAM	4	SANDY LOAM	22
520	SILTY CLAY LOAM	4	SANDY LOAM	27
	SANDY LOAM	2	SANDY LOAM	28
	SILTY CLAY LOAM	3	SANDY LOAM	27
	SILTY LOAM	2	SANDY LOAM	24
510	SANDY LOAM	3	SANDY LOAM	31
	SILTY CLAY LOAM	0	SANDY LOAM	31
	SILTY CLAY LOAM	2	SANDY LOAM	31
500	SANDY LOAM	13	SANDY LOAM	18
	SILTY LOAM	2	SAND	21
490	SAND	9	SAND	14
480	SHALE	39	SHALE	9
470	SHALE	100/6'	SHALE	100/6'

SCALE: 0 15 30
BORING ELEVATIONS PROVIDED BY HANSON ENGINEERS

BORING LOCATION PLAN GEOTECHNICAL EXPLORATION BRIDGE STRUCTURE 029-3040 COUNTY HIGHWAY 26 ELLISVILLE TOWNSHIP FULTON COUNTY, ILLINOIS	 TESTING SERVICE CORPORATION 1701 W. MARKET STREET, SUITE B BLOOMINGTON, ILLINOIS 61701	DRAWN BY: MKR
		CHECKED BY: DPR
		TSC JOB: 76,963
		DATE: 7-8-2011

BORING LOGS
STRUCTURE NUMBER 029-3240

PROFESSIONAL DESIGN FIRM LICENSE #184-001084		SHEET NO. 9		CH	SECTION	COUNTY	TOTAL SHEETS	SHEET NO.
© Copyright Hanson Professional Services Inc. 2013		9 SHEETS		26	11-00143-00-BR	Fulton	23	18
 Hanson Professional Services Inc.		DATE: 3/22/13		CONTRACT NO. 89597				
				FED. ROAD DIST. NO. 2 ILLINOIS FED. AID PROJECT				

03/27/2013
 c:\pwworkspace\hanson\projects\029-3240-89597-3009-br-log.dwg

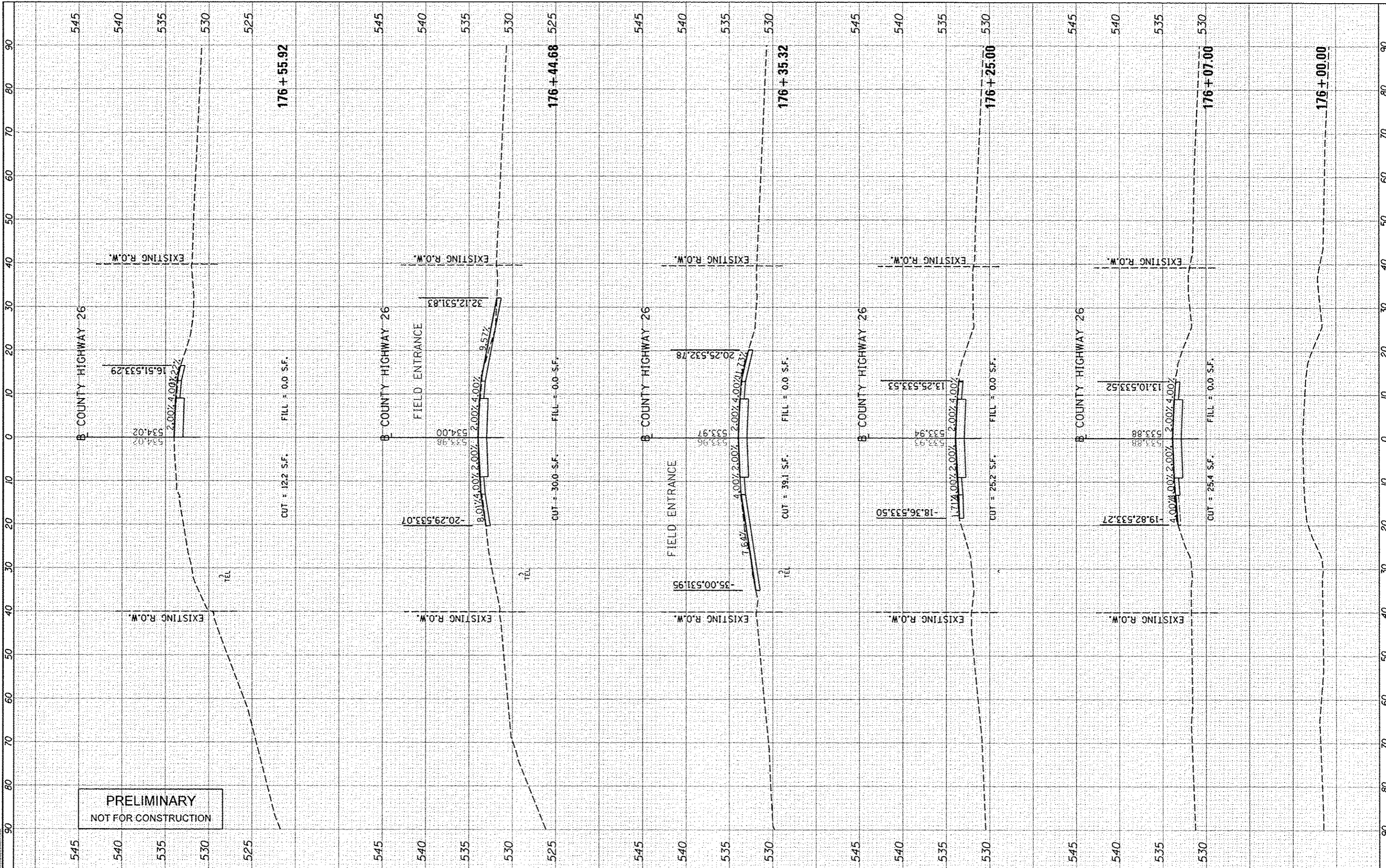
LAYOUT	SM	1/10/13
DRAWN	MM	3/22/13
REVIEWED	SM	3/22/13

DATE	
BY	
FOR	
SUPERVISOR	
PROJECT	
NOTE BOOK	
AREA	
CHECKED	



DATE	
BY	
FOR	
SUPERVISOR	
PROJECT	
NOTE BOOK	
AREA	
CHECKED	

DATE	1/20/13
BY	2/1/13
FOR	2/1/13
SUPERVISOR	
PROJECT	
NOTE BOOK	
AREA	
CHECKED	



PRELIMINARY
NOT FOR CONSTRUCTION

FILE NAME: c:\pwise\work\do_not_delete\dm40234\04181\0137
USER NAME: andr02046
SHT: sch1081.dgn
PLOT SCALE: 20.0000 / in.
PLOT DATE: 03/27/2013

DESIGNED - MGD
DRAWN - MGD
CHECKED - CAL
DATE - 3-26-13

REVISED -
REVISED -
REVISED -
REVISED -

STATE OF ILLINOIS
DEPARTMENT OF TRANSPORTATION

FULTON CO HWY 26
ROADWAY - CROSS SECTIONS
SCALE: 1"=20'
SHEET OF SHEETS: STA. 176+00.00 TO STA. 176+55.92

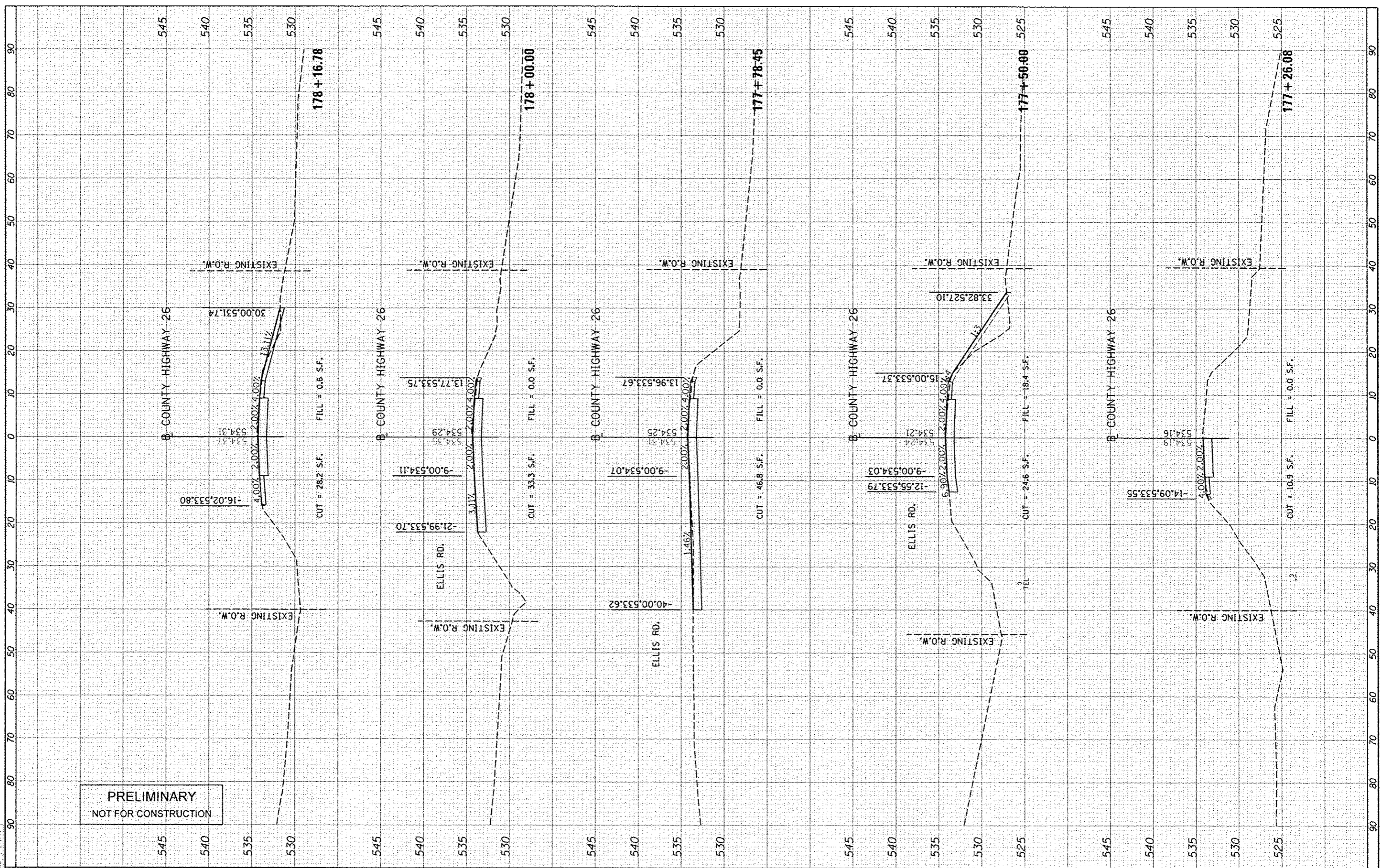
F.A. RTE.	SECTION	COUNTY	TOTAL SHEETS	SHEET NO.
CH26	11-00143-00-BR	FULTON	23	19
CONTRACT NO.			89597	
ILLINOIS: PEG. AND PROJECT BROS 0057 10329				

FINAL	DATE
DESIGNED	
DRAWN	
CHECKED	
REVIEWED	
DATE	



DESIGNED	DATE
DRAWN	
CHECKED	
REVIEWED	
DATE	

USER	DATE
DESIGNED	
DRAWN	
CHECKED	
REVIEWED	
DATE	



**PRELIMINARY
NOT FOR CONSTRUCTION**

**STATE OF ILLINOIS
DEPARTMENT OF TRANSPORTATION**

**FULTON CO HWY 26
ROADWAY - CROSS SECTIONS**

FILE NAME: ...
USER NAME: ...
DESIGNED: MGD
DRAWN: MGD
CHECKED: CAL
DATE: 3-26-13

REVISIONS:
REVISED: -
REVISED: -
REVISED: -
REVISED: -

SCALE: 1"=20'
SHEET OF SHEETS
STA. 177+26.08 TO STA. 178+16.78

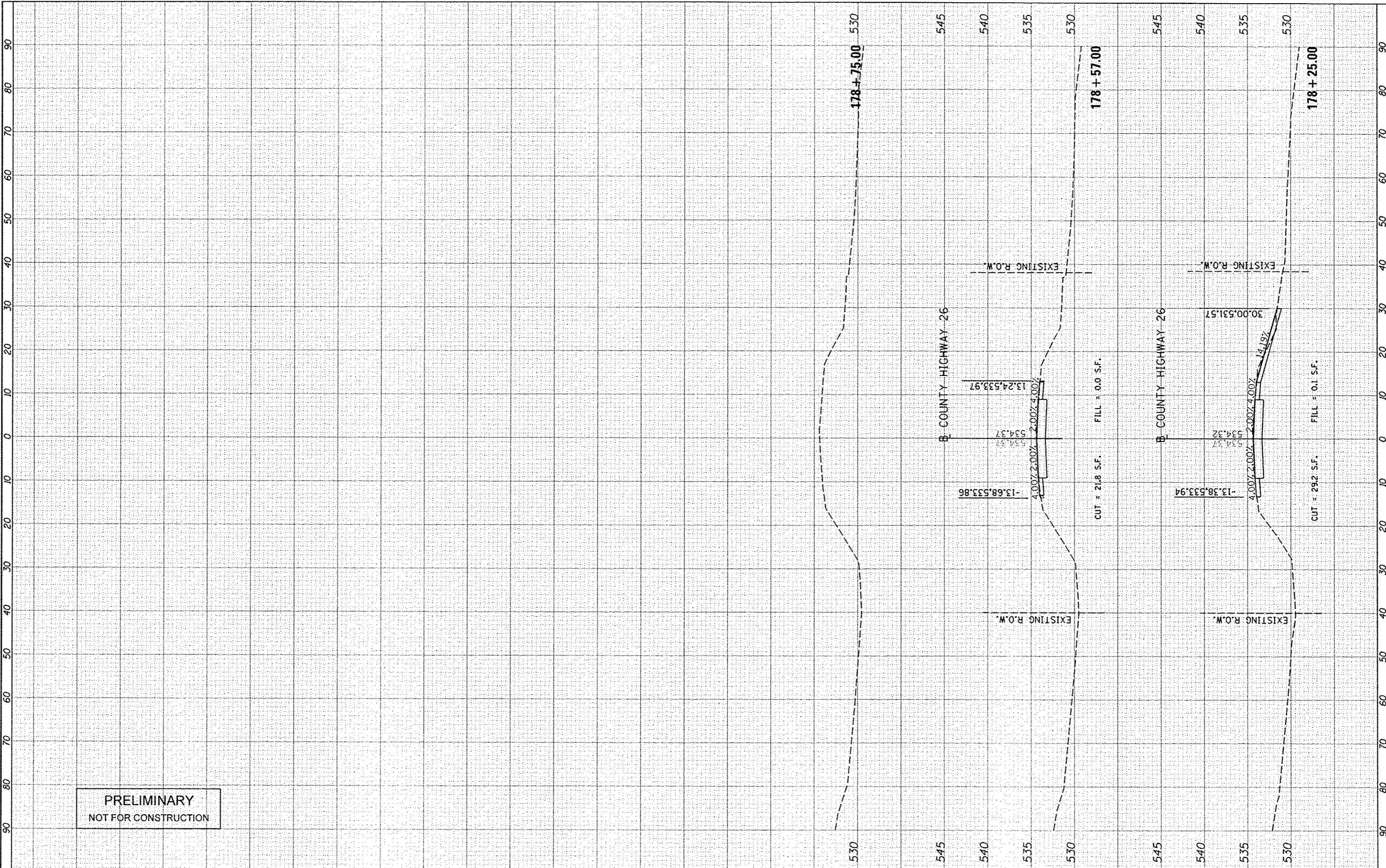
F.A. RTE. CH26
SECTION 11-00143-00-BR
COUNTY FULTON
TOTAL SHEETS 23
SHEET NO. 20
CONTRACT NO. 89597
ILLINOIS FED. AID PROJECT BROS 0057 (032)

DATE	
BY	
STARTED	
SURVEY	
NOTE BOOK	
AREA	
AREAS CHECKED	



DATE	
BY	
STARTED	
SURVEY	
NOTE BOOK	
AREA	
AREAS CHECKED	

DATE	
BY	
STARTED	
SURVEY	
NOTE BOOK	
AREA	
AREAS CHECKED	



**PRELIMINARY
NOT FOR CONSTRUCTION**

FILE NAME	USER NAME
USER NAME	andrew00946
DATE	3-26-13

DESIGNED	- MGD	REVISED	-
DRAWN	- MGD	REVISED	-
CHECKED	- CAL	REVISED	-
DATE	- 3-26-13	REVISED	-

**STATE OF ILLINOIS
DEPARTMENT OF TRANSPORTATION**

**FULTON CO HWY 26
ROADWAY - CROSS SECTIONS**

SCALE: 1"=20' SHEET OF SHEETS STA. 178+25.00 TO STA. 178+75.00

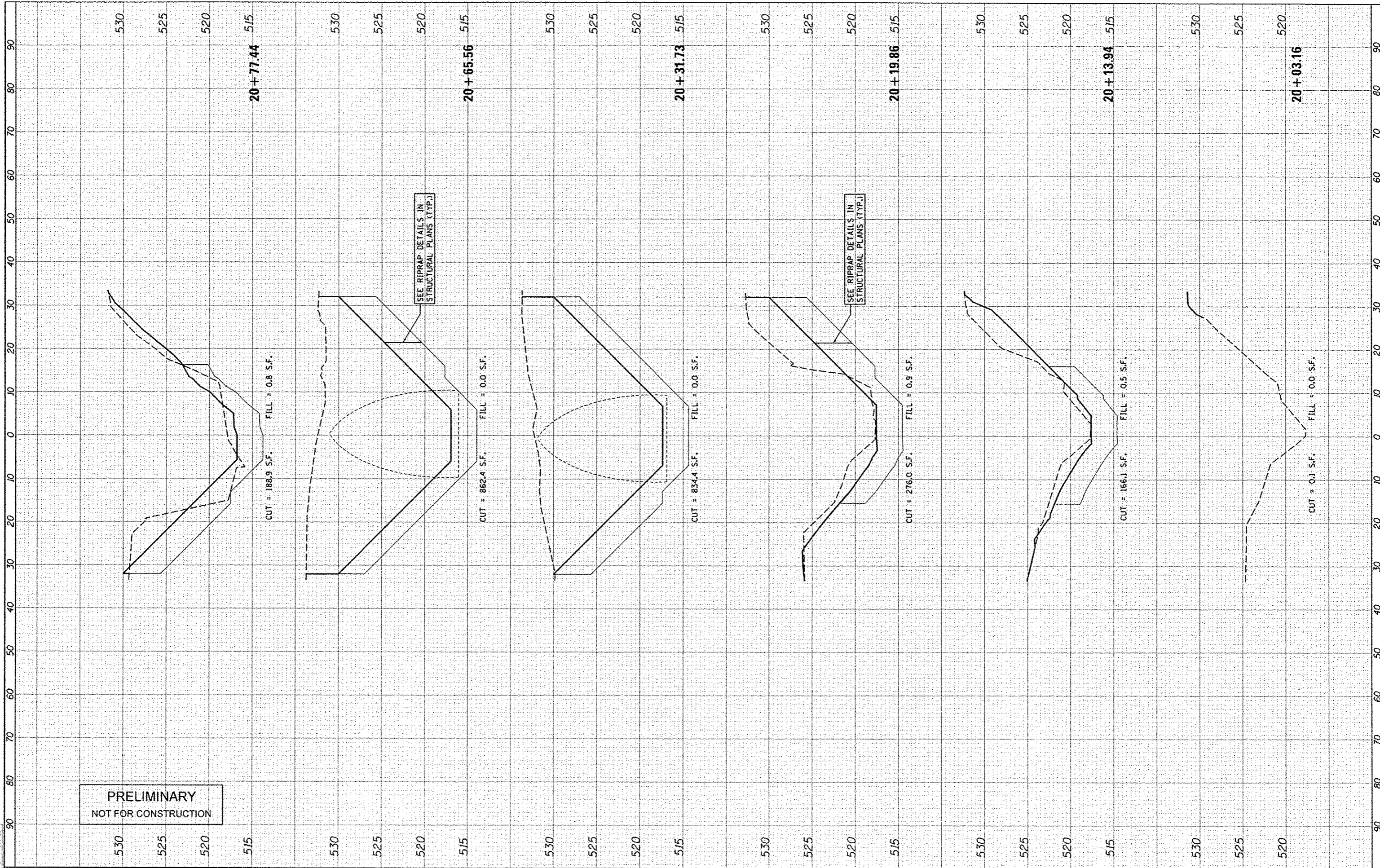
F.A. RTE.	SECTION	COUNTY	TOTAL SHEETS	SHEET NO.
CH26	11-00143-00-BR	FULTON	23	21
			CONTRACT NO. 89597	
ILLINOIS FED. AID PROJECT BRGS 0057 0032				

DATE	
SCALE	
PROJECT	
NO. OF SHEETS	
DATE	
SCALE	
PROJECT	
NO. OF SHEETS	



DATE	
SCALE	
PROJECT	
NO. OF SHEETS	
DATE	
SCALE	
PROJECT	
NO. OF SHEETS	

DATE	
SCALE	
PROJECT	
NO. OF SHEETS	



PRELIMINARY
NOT FOR CONSTRUCTION

FILE NAME: c:\wise_work\do_not_delete\dwg\48234\04\10137.dwg
 USER NAME: andrew02846
 PLOT SCALE: 20.0000 / in.
 PLOT DATE: 4/3/2013

DESIGNED - MGD
 DRAWN - MGD
 CHECKED - CAL
 DATE - 3-26-13

REVISED -
 REVISED -
 REVISED -
 REVISED -

STATE OF ILLINOIS
DEPARTMENT OF TRANSPORTATION

FULTON CO HWY 26
CREEK - CROSS SECTIONS

SCALE: 1"=20' SHEET OF SHEETS STA. 20+03.16 TO STA. 20+77.44

F.A. RTE.	SECTION	COUNTY	TOTAL SHEETS	SHEET NO.
CH26	11-00143-00-BR	FULTON	23	22
CONTRACT NO.			89597	
ILLINOIS FEED. AID PROJECT BROS 0057 0032				

