

F.A.P. RTE.	SECTION	COUNTY	TOTAL SHEETS	SHEET NO.
332	(16,17,18)RS-2	LAWRENCE	40	1
		ILLINOIS	CONTRACT NO. 94977	

**STATE OF ILLINOIS
DEPARTMENT OF TRANSPORTATION
DIVISION OF HIGHWAYS**

**PROPOSED
HIGHWAY PLANS**

FOR INDEX OF SHEETS, SEE SHEET NO. 2

STATION EQUATIONS:
 STA. 38+05.46 (BK) = STA. 38+15.72 (AH)
 STA. 64+73.00 (BK) = STA. 57+11.10 (AH)
 STA. 141+92.10 (BK) = STA. 142+10.78 (AH)
 STA. 299+15.58 (BK) = STA. 299+00.44 (AH)

PAVING OMISSIONS:
 STA. 54+73 TO STA. 63+18
 STA. 83+10 TO STA. 86+85
 STA. 253+20 TO STA. 255+40
 STA. 304+28 TO STA. 304+46

ADT = 4,297 (2009)

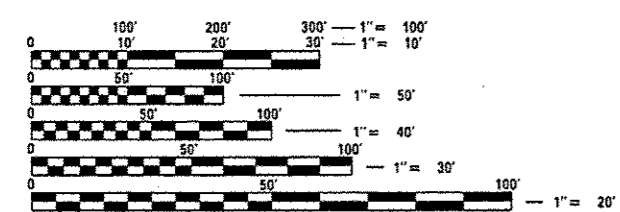
**F.A.P. ROUTE 332 (IL. RTE. 1)
SECTION (16,17,18)RS-2
PROJECT NHPP-0332(112)
RESURFACING (3P)
LAWRENCE COUNTY**

C-97-025-03

FAP ROUTE 332 (IL RTE 1)
SECTION (16,17,18)RS-2
LAWRENCE COUNTY
ENDS STA. 440+73

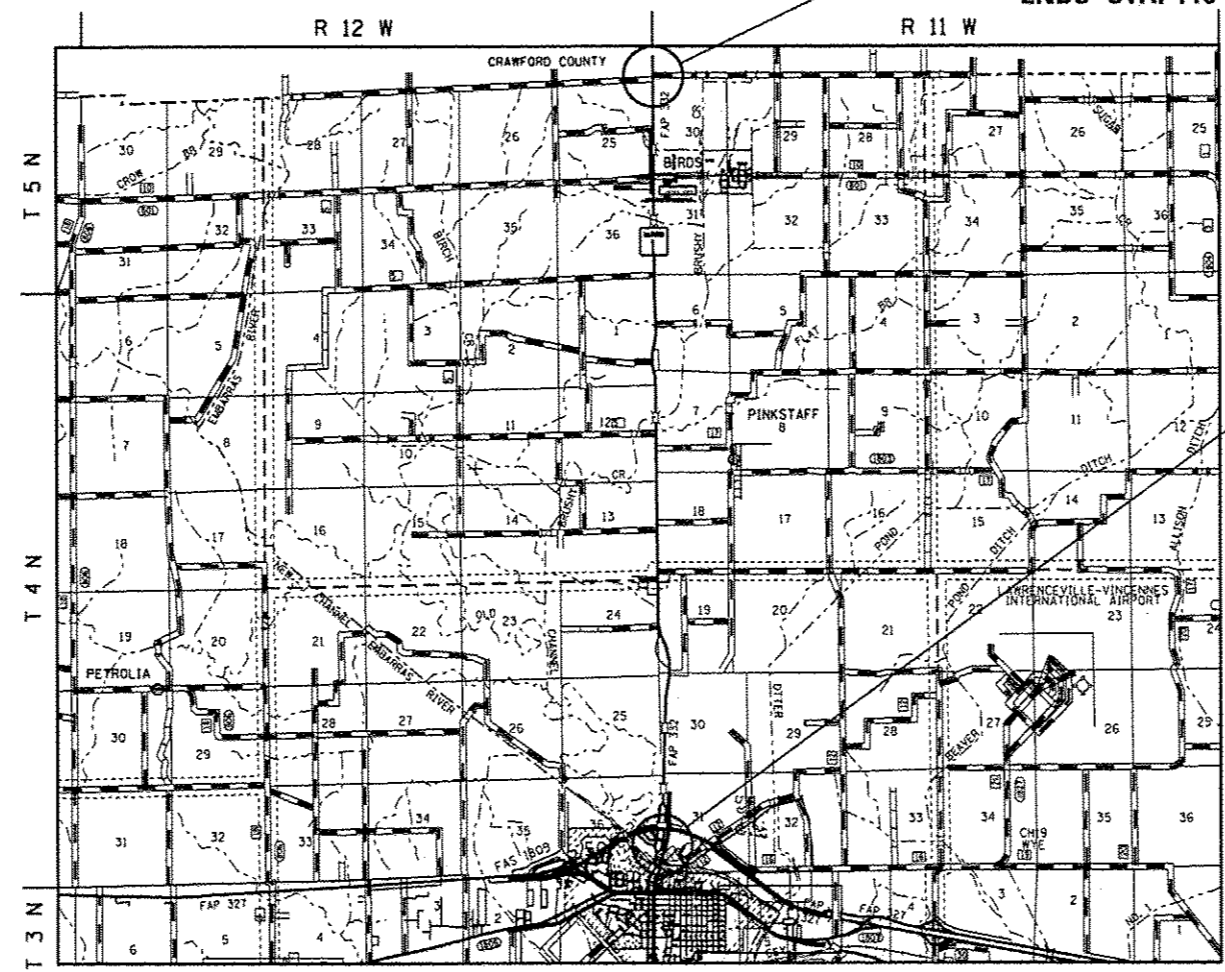


FAP ROUTE 332 (IL RTE 1)
SECTION (16,17,18)RS-2
LAWRENCE COUNTY
BEGINS STA. 23+85



FULL SIZE PLANS HAVE BEEN PREPARED USING STANDARD ENGINEERING SCALES. REDUCED SIZED PLANS WILL NOT CONFORM TO STANDARD SCALES. IN MAKING MEASUREMENTS ON REDUCED PLANS, THE ABOVE SCALES MAY BE USED.

J.U.L.I.E.
JOINT UTILITY LOCATION INFORMATION FOR EXCAVATION
1-800-892-0123
OR 811



GROSS LENGTH = 42,437 FT. = 8.04 MILES
NET LENGTH = 40,978 FT. = 7.76 MILES

PROJECT ENGINEER: TOM RONAN
PROJECT MANAGER: BRETT WALKER
PHONE: (217)-342-8314
CONTRACT NO. 94977

STATE OF ILLINOIS
DEPARTMENT OF TRANSPORTATION
DIVISION OF HIGHWAYS

SUBMITTED Oct 19 20 12
Roger L. Driscoll, JCS
DEPUTY DIRECTOR OF HIGHWAYS, REGION ENGINEER

March 22 20 13
John D. Baramy, PE, JCS
ENGINEER OF DESIGN AND ENVIRONMENT

March 22 20 13
Omur Osman, PE, JCS
DIRECTOR OF HIGHWAYS, CHIEF ENGINEER

**PRINTED BY THE AUTHORITY
OF THE STATE OF ILLINOIS**