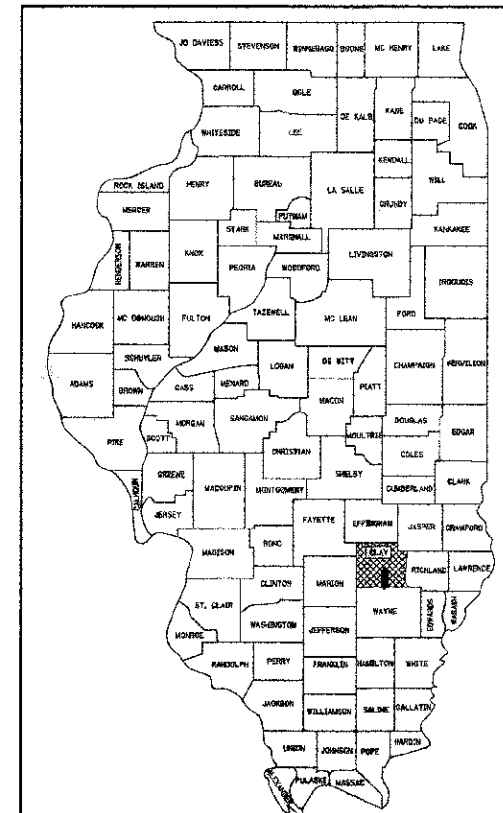


STATE OF ILLINOIS
DEPARTMENT OF TRANSPORTATION

PLANS FOR PROPOSED
HIGHWAY BRIDGE PROGRAM

TR 212A (SOUTH STANFORD ROAD)
RACCOON CREEK
SECTION 99-04125-00-BR
PROJECT NO. BROS-025(074)
HARTER ROAD DISTRICT
CLAY COUNTY
JOB NO. C-97-065-12



LOCATION OF SECTION INDICATED THUS: -

INDEX OF SHEETS

1. COVER SHEET
2. SUMMARY OF QUANTITIES, GENERAL NOTES, AND TYPICAL SECTIONS
3. PLAN AND PROFILE OF ROADWAY
4. GENERAL PLAN AND ELEVATION
- 5.-8. PRECAST PRESTRESSED CONCRETE DECK BEAM DETAILS
9. STEEL RAILING, TYPE S1 DETAILS
10. ABUTMENT DETAILS
11. PIER DETAILS
12. HP PILE DETAILS
- 13.-15. CROSS SECTIONS OF ROADWAY

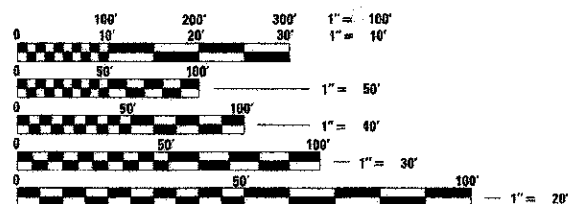
HIGHWAY STANDARDS

- 000001-06 STANDARD SYMBOLS, ABBREVIATIONS AND PATTERNS
- 280001-07 TEMPORARY EROSION CONTROL SYSTEMS
- 515001-03 NAME PLATE FOR BRIDGES
- 635006-03 REFLECTOR AND TERMINAL MARKER PLACEMENT
- 665001-02 WOVEN WIRE FENCE
- 701901-02 TRAFFIC CONTROL DEVICES
- BLR 21-5 TYPICAL APPLICATION OF TRAFFIC CONTROL DEVICES FOR CONSTRUCTION ON RURAL LOCAL HIGHWAYS

SOIL BORINGS (SEE SPECIFICATIONS)

DESIGN CLASSIFICATION: RURAL LOCAL ROAD

ADT₂₀₁₁ : 150
ADT₂₀₃₁ : 200
DESIGN SPEED - 30 MPH

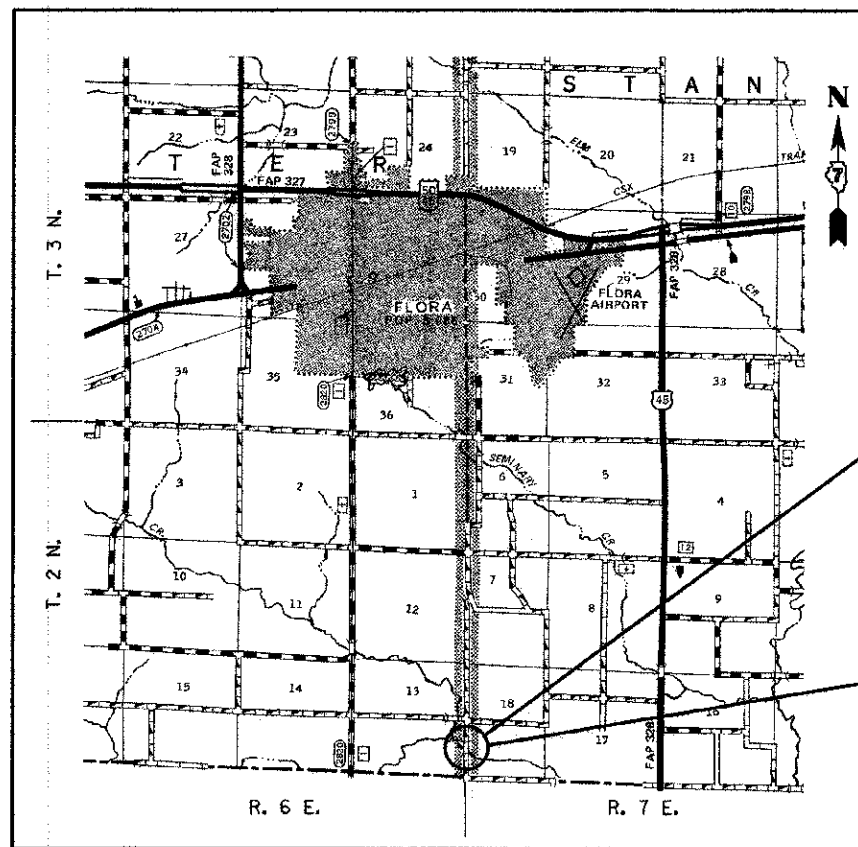


FULL SIZE PLANS HAVE BEEN PREPARED USING STANDARD ENGINEERING SCALES. REDUCED SIZED PLANS WILL NOT CONFORM TO STANDARD SCALES, IN MAKING MEASUREMENTS ON REDUCED PLANS, THE ABOVE SCALES MAY BE USED.

J.U.L.I.E.
JOINT UTILITY LOCATING INFORMATION FOR EXCAVATORS
1-800-892-0123 or 811 Website: <http://www.illinois1call.com>



Gary L. Hahn 02-21-2013
GARY L. HAHN
CENTRALIA, ILLINOIS
ILLINOIS LICENSED PROFESSIONAL
ENGINEER NO. 62-42606
EXPIRES NOV. 30, 2013



SECTION BEGINS
STA. 45+75.72

SECTION 99-04125-00-BR INCLUDES THE CONSTRUCTION OF A THREE SPAN PRECAST PRESTRESSED CONCRETE DECK BEAM BRIDGE CARRYING TR 212A OVER RACCOON CREEK, 122'-8" BK. TO BK. ABUTMENTS X 24' WIDE, 0° SKEW. EXISTING STRUCTURE NO. 013-3162 PROPOSED STRUCTURE NO. 013-3239

SECTION ENDS
STA. 53+80.00

LOCATION: NEAR THE NE CORNER, SE 1/4, SE 1/4, SECTION 13, T2N, R6E, 3RD P.M.
NET LENGTH OF PROJECT: 804.28 FT = 0.152 MI

CLAY COUNTY HIGHWAY DEPARTMENT	
APPROVED	<i>Feb 22</i> , 2013 <i>Michael R. Quardt</i> CLAY COUNTY, COUNTY ENGINEER
PASSED	<i>2-28</i> , 2013 <i>Maurice East</i> DISTRICT SEVEN ENGINEER OF LOCAL ROADS & STREETS
RELEASING FOR BID BASED ON LIMITED REVIEW	<i>2-28</i> , 2013 <i>Roger L. Hinchell</i> DEPUTY DIRECTOR OF HIGHWAYS, REGION FOUR ENGINEER

PRINTED BY THE AUTHORITY
OF THE STATE OF ILLINOIS

CONTRACT NO. 95704

ROUTE	SECTION	COUNTY	TOTAL SHEETS	SHEET NO.
TR 212A	99-04125-00-BR	CLAY	15	1
CONTRACT NO. 95704				
RAAI JOB NO. 51611		ILLINOIS FED. AID PROJECT		