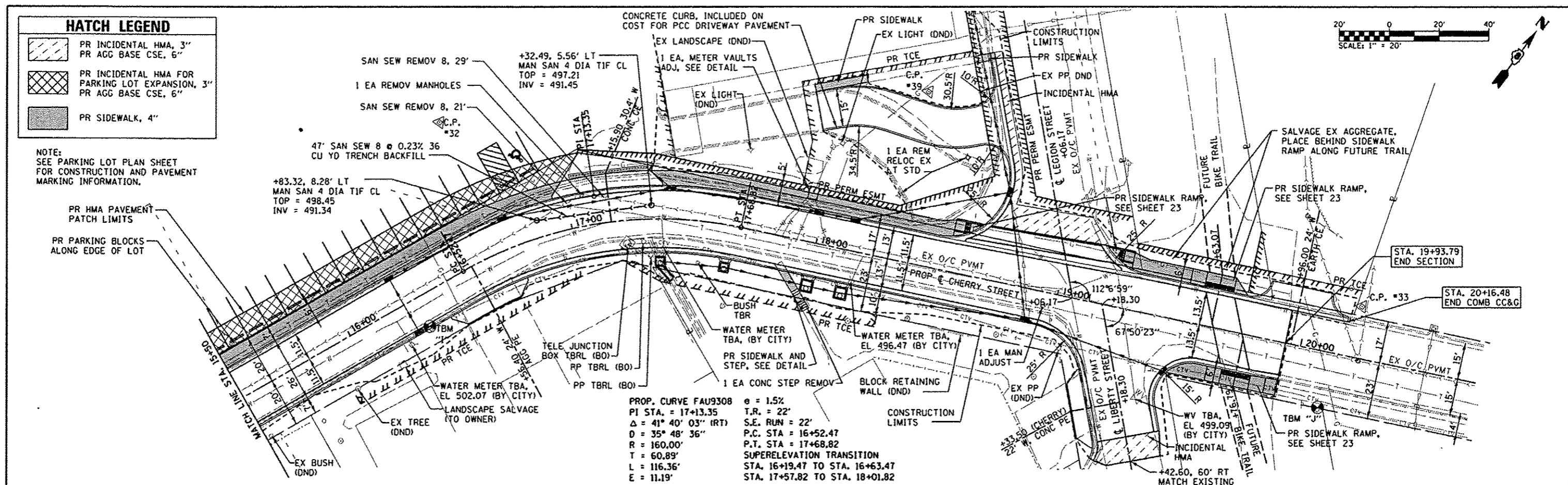
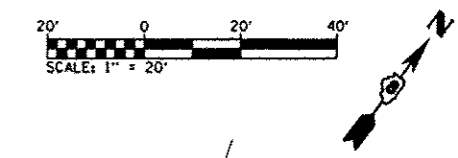


**HATCH LEGEND**

- 
- 
- 

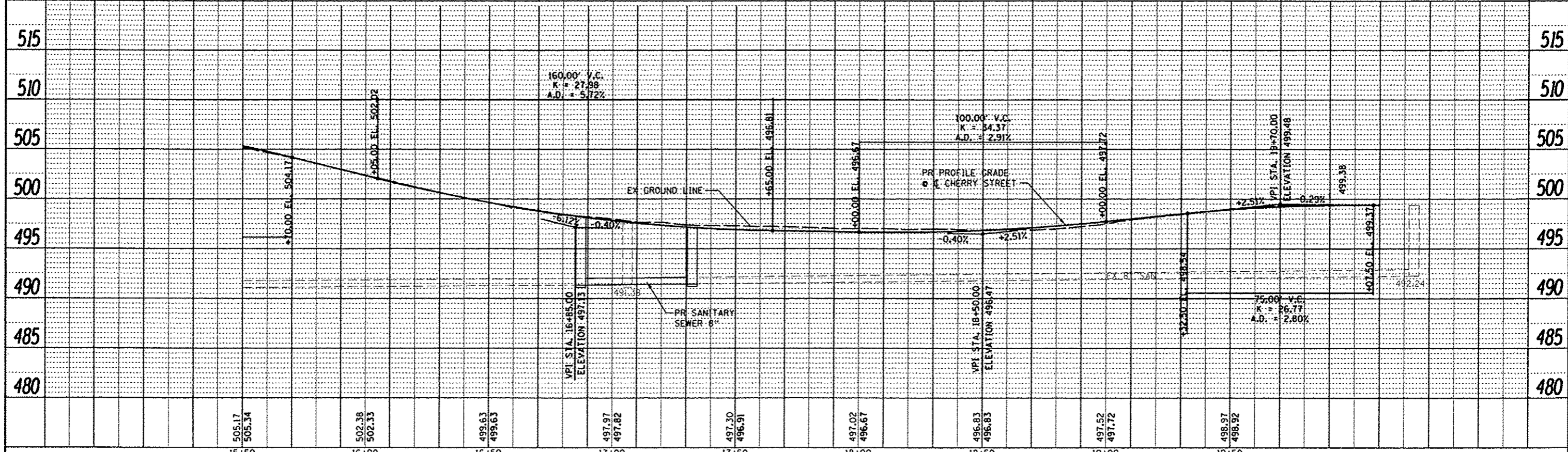
NOTE:  
SEE PARKING LOT PLAN SHEET  
FOR CONSTRUCTION AND PAVEMENT  
MARKING INFORMATION.

DATE	
BY	
REVISIONS	
NO.	
DESCRIPTION	



DATE	
BY	
REVISIONS	
NO.	
DESCRIPTION	

520	TBM "I" BM IN PP NORTH OF HOUSE # 218 STA. 16+29.75, 12.63' RT, ELEV = 503.29	C.P. # 32 - N. 647135.55, E. 2287740.92 PK NAIL STA. 16+68.16, 57.97' LT ELEV. 500.32	C.P. # 39 - N. 647263.97, E. 2287892.19 SET SPINDLE STA. 18+31.77, 69.26' LT ELEV. 498.49	TBM "J" BM IN PP NE QUAD OF CHERRY ST. AND LIBERTY ST. STA. 20+11.89, 22.72' RT, ELEV = 502.50	C.P. # 33 - N. 647299.36, E. 2288084.13 IRON BAR WITH CAP STA. 20+20.83, 20.78' LT ELEV. 499.49
-----	---	---	---	--	---



FILE NAME 0820012-shr.ppl.dgn	USER NAME default	DESIGNED WAM	REVISED -	<b>STATE OF ILLINOIS DEPARTMENT OF TRANSPORTATION</b>		<b>ROADWAY PLAN AND PROFILE SHEETS</b>		F.A.U. RTE. 9308	SECTION 08-00046-00-PV	COUNTY MONROE	TOTAL SHEETS 37	SHEET NO. 11			
	PLOT TIME 12:29:29 PM	DRAWN WAM	REVISED -					SCALE: 1" = 20'		SHEET 2 OF 2 SHEETS		STA. 15+50.00 TO STA. 20+00.00		CONTRACT NO. 97518	
	PLOT SCALE 1/8" = 1' / IN.	CHECKED -	REVISED -					ILLINOIS FED. AID PROJECT							
	PLOT DATE 3/28/2013	DATE -	REVISED -												