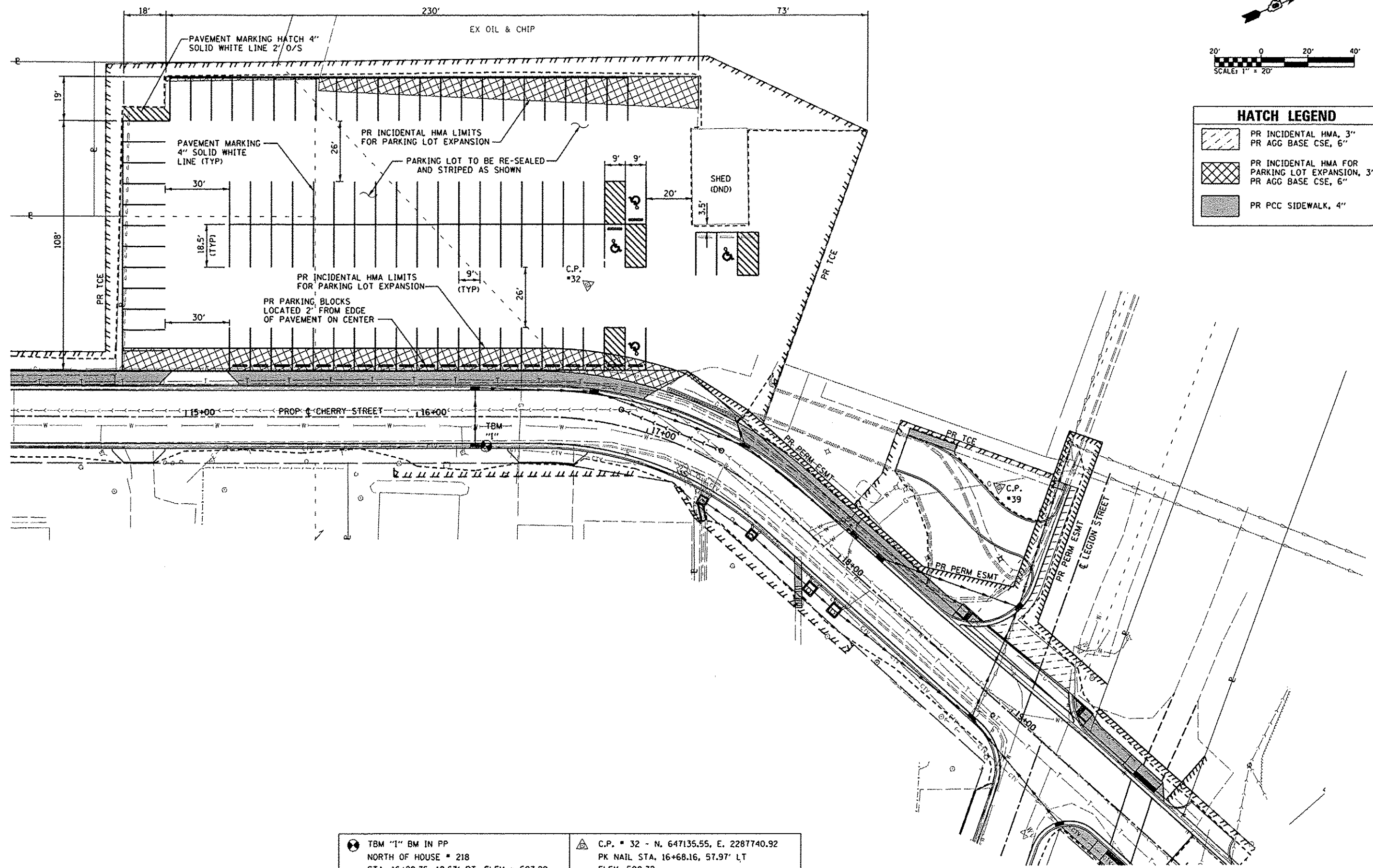


HATCH LEGEND	
	PR INCIDENTAL HMA, 3" PR AGG BASE CSE, 6"
	PR INCIDENTAL HMA FOR PARKING LOT EXPANSION, 3" PR AGG BASE CSE, 6"
	PR PCC SIDEWALK, 4"



<p>⊙ TBM "1" BM IN PP NORTH OF HOUSE # 218 STA. 16+29.75, 12.63' RT. ELEV = 503.29</p>	<p>⚠ C.P. # 32 - N. 647135.55, E. 2287740.92 PK NAIL STA. 16+68.16, 57.97' LT ELEV. 500.32</p>
--	--

FILE NAME *	0828012-sh1.ppl.dgn
USER NAME *	default
PLOT TIME *	12:39:59 PM
PLOT SCALE *	48.0000' / IN.
PLOT DATE *	3/20/2013

DESIGNED -	REVISÉ -
DRAWN -	REVISÉ -
CHECKED -	REVISÉ -
DATE -	REVISÉ -

DESIGNED -	REVISÉ -
DRAWN -	REVISÉ -
CHECKED -	REVISÉ -
DATE -	REVISÉ -

**STATE OF ILLINOIS
DEPARTMENT OF TRANSPORTATION**

PARKING LOT PLAN

SCALE: 1" = 20' SHEET 1 OF 1 SHEETS STA. TO STA.

F.A.U. RTE.	SECTION	COUNTY	TOTAL SHEETS	SHEET NO.
9308	08-00046-00-PV	MONROE	37	12
CONTRACT NO. 97518			ILLINOIS FED. AID PROJECT	