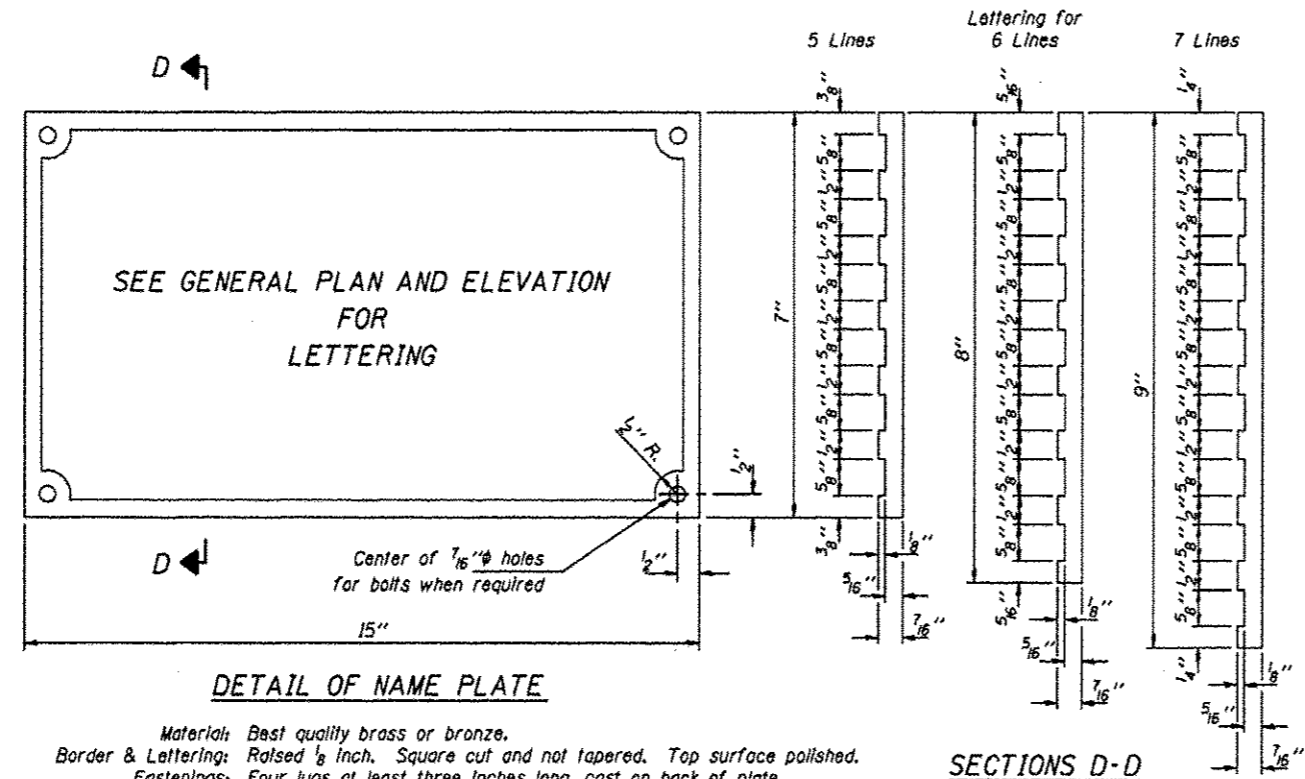


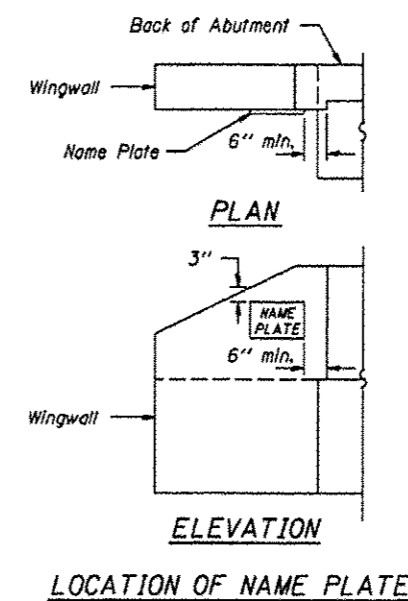
ROUTE	SECTION	COUNTY	TOTAL SHEETS	SHEET NO.
TR 88A	10-01197-00-BR	UNION	12	10
PROJECT NO. BROS-181(65)			CONTRACT NO. 99480	



DETAIL OF NAME PLATE

Material: Best quality brass or bronze.
 Border & Lettering: Raised $\frac{1}{8}$ inch. Square cut and not tapered. Top surface polished.
 Fastenings: Four lugs at least three inches long, cast on back of plate.

SECTIONS D-D



LOCATION OF NAME PLATE

NAME PLATES
 TOWNSHIP ROUTE 88A (BARTSCH LANE)
 TRIBUTARY TO CLEAR CREEK
 SECTION 10-01197-00-BR
 UNION COUNTY
 STRUCTURE NO. 091-3237