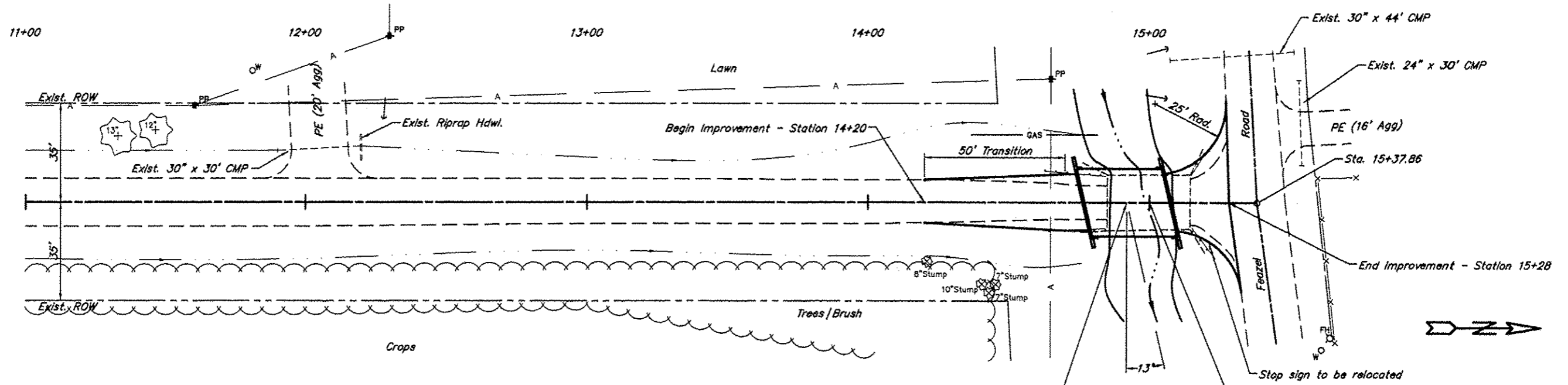


ROUTE	SECTION	COUNTY	TOTAL SHEETS	SHEET NO.
TR 164	10-08119-00-BR	SALINE	13	2
PROJECT NO. BROS-165(38)			CONTRACT NO. 98489	

B.M. - Paint mark on N end of SE wing
 10' Rt. Station 14+85
 Assumed Elev. 385.00

Existing Structure - Cast in place concrete deck
 on steel stringers with closed concrete
 abutments. 18.1' Wide x 30.5' Long



SCALES:
 1" = 40' HOR
 1" = 10' VER

Tree Removal

Sta.	Offset	Unit Dia.
14+21	21' Lt.	8
14+40	29' Rt.	10
14+43	32' Lt.	7
14+45	29' Lt.	7

Note: All trees listed are stumps.

Station 14+92 - Single span precast
 prestressed concrete deck beam bridge
 31'-7 3/4" bk-bk Abutments
 Skewed 13' Rt. Forward

Existing structure to be removed.
 Removal of the existing guard rail
 to be included with the structure
 removal.

