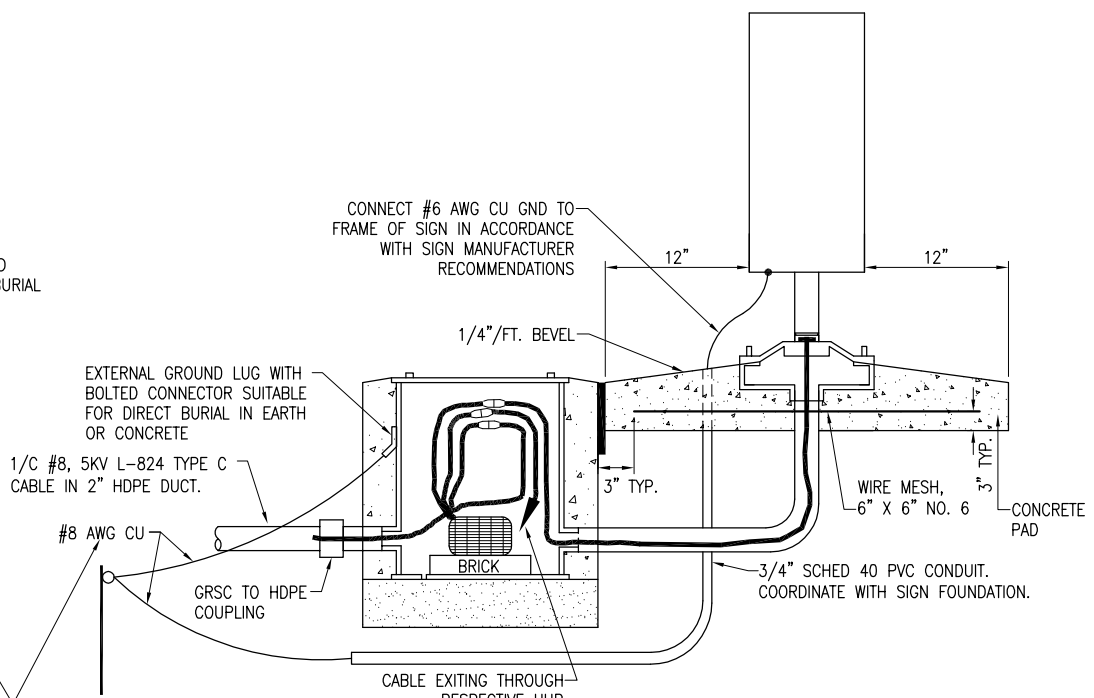
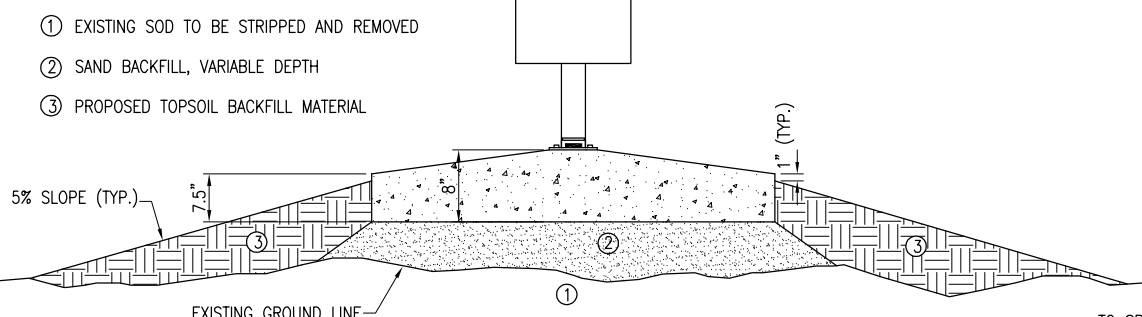


OPTION 1 ELEVATION
(NOT TO SCALE)



OPTION 2 ELEVATION
(NOT TO SCALE)

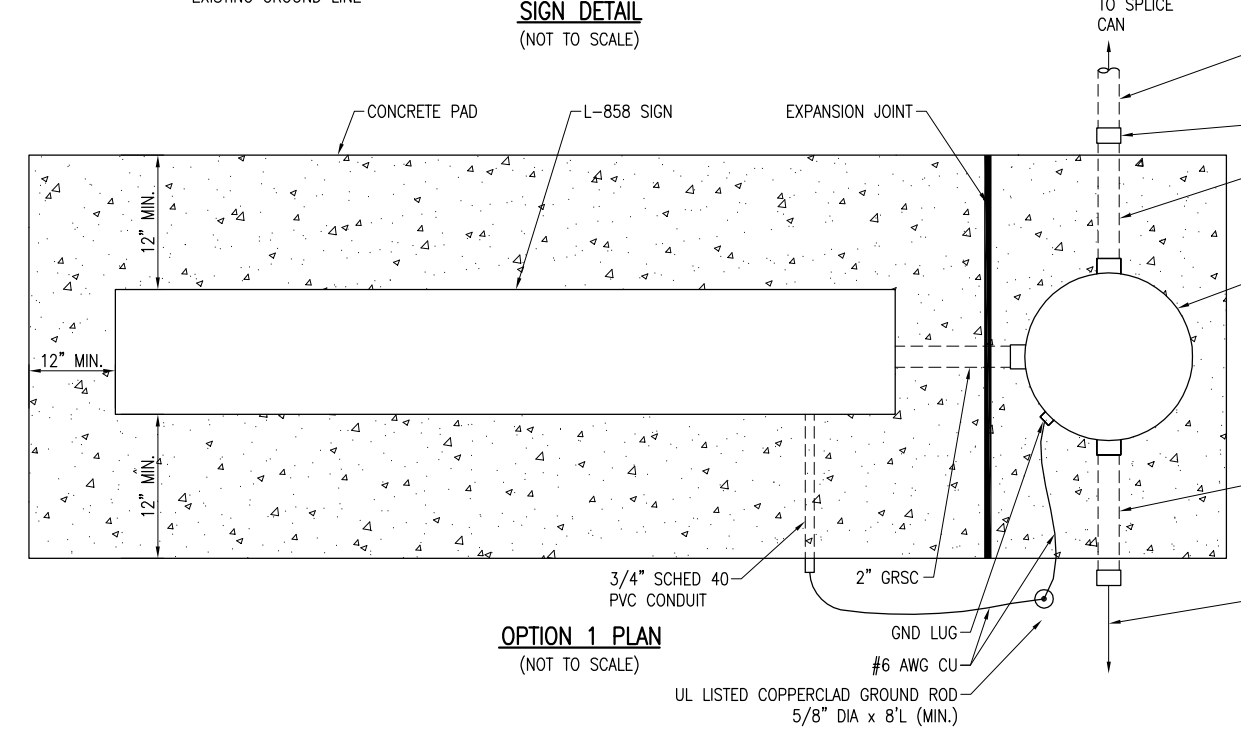


SIGN DETAIL
(NOT TO SCALE)

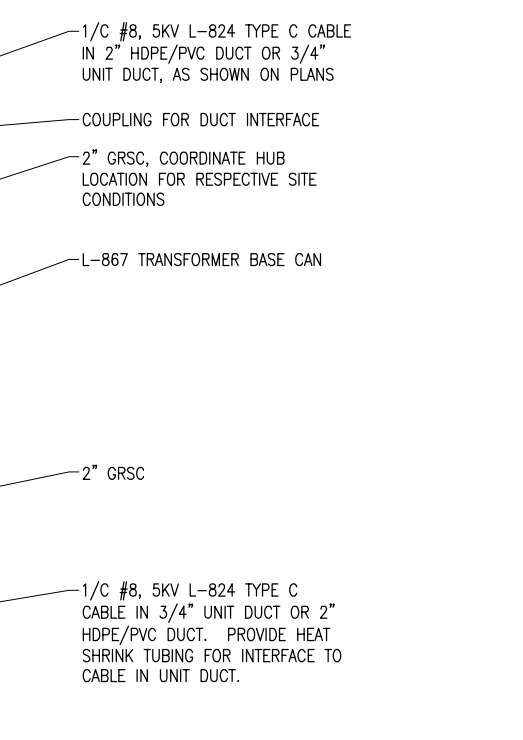
PER FAA AC 150/5340-30G DESIGN AND INSTALLATION DETAILS FOR AIRPORT VISUAL AIDS, A LIGHT BASE GROUND MUST BE INSTALLED AT EACH LIGHT FIXTURE. A LIGHT BASE GROUND SHALL BE INSTALLED AT EACH STAKE MOUNTED LIGHT AND EACH TRANSFORMER BASE/LIGHT CAN ASSOCIATED WITH RUNWAY LIGHTS, TAXIWAY LIGHTS, AND LIGHTED TAXI GUIDANCE SIGNS. THE LIGHT BASE GROUND SHALL BE A #6 AWG BARE COPPER CONDUCTOR CONNECTED TO THE GROUND LUG ON THE RESPECTIVE L-867 TRANSFORMER BASE/LIGHT CAN, TAXI SIGN FRAME, OR MOUNTING STAKE AND A 3/8-INCH DIAMETER BY 8-FOOT LONG (MINIMUM) UL LISTED COPPER CLAD GROUND ROD. ALSO BOND THE SIGN FRAME TO THE GROUND ROD WITH A #6 AWG BARE COPPER CONDUCTOR.

GENERAL NOTES

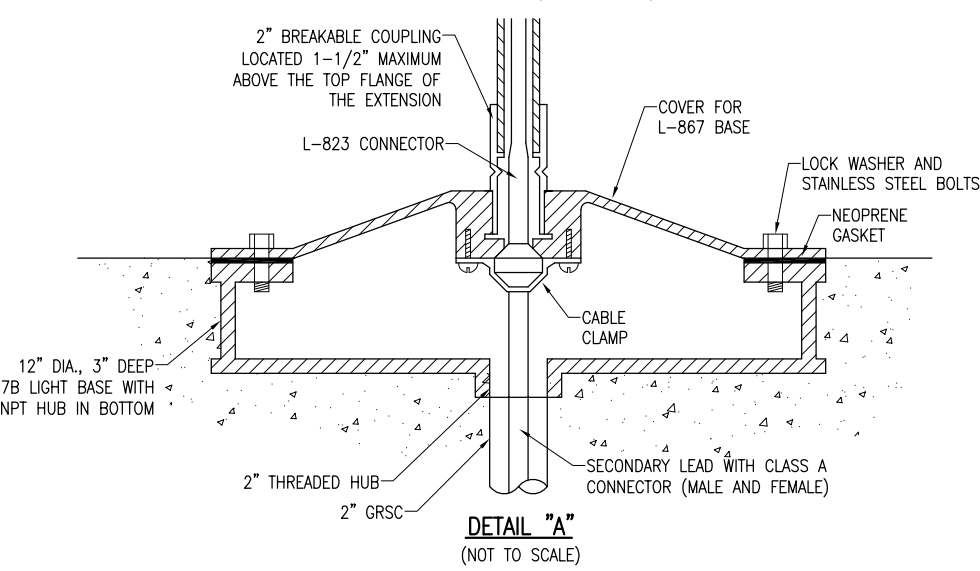
1. SEE LIGHTING LAYOUT SHEET FOR SIGN LEGEND, LOCATION, TYPE, SIZE, STYLE, AND CLASS.
2. SEE ELECTRICAL NOTES SHEETS.



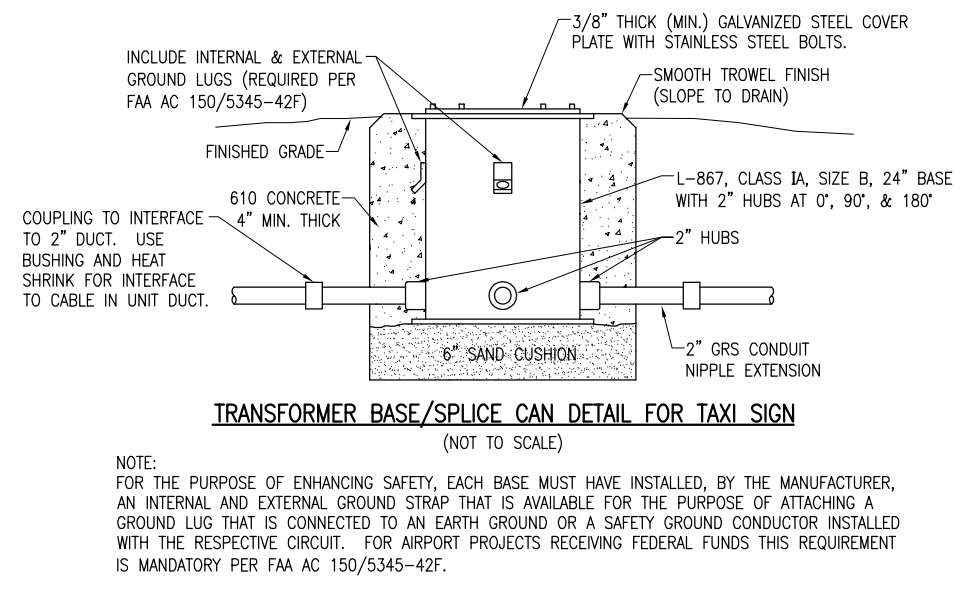
OPTION 1 PLAN
(NOT TO SCALE)



TRANSFORMER BASE/SPLICE CAN DETAIL FOR TAXI SIGN
(NOT TO SCALE)



DETAIL "A"
(NOT TO SCALE)



NOTE:
FOR THE PURPOSE OF ENHANCING SAFETY, EACH BASE MUST HAVE INSTALLED, BY THE MANUFACTURER, AN INTERNAL AND EXTERNAL GROUND STRAP THAT IS AVAILABLE FOR THE PURPOSE OF ATTACHING A GROUND LUG THAT IS CONNECTED TO AN EARTH GROUND OR A SAFETY GROUND CONDUCTOR INSTALLED WITH THE RESPECTIVE CIRCUIT. FOR AIRPORT PROJECTS RECEIVING FEDERAL FUNDS THIS REQUIREMENT IS MANDATORY PER FAA AC 150/5345-42F.

1. EXISTING SOD TO BE STRIPPED AND REMOVED
2. SAND BACKFILL, VARIABLE DEPTH
3. PROPOSED TOPSOIL BACKFILL MATERIAL

FEB 05, 2013 4:39 PM HAGL000382
pw:\sps-sv306\hanson\Documents\12\120062\120062\120062\CAD\120062\120062.dwg

| REVISION | DATE |
|----------|------|
| | |
| | |
| | |

LITCHFIELD MUNICIPAL AIRPORT
LITCHFIELD, ILLINOIS
BLOCK GRANT PROJ.: 3-17-0063-B19
IL PROJ.: 31F-4194

| | | | |
|---------------------------|--------------------------|---------------------|----------------|
| Hanson Proj. No. 12A0062D | Filename: E-503-DETL.dwg | Scale: NOT TO SCALE | Date: 01/11/13 |
| LAYOUT | KNL | 12/31/12 | |
| DRAWN | BAK | 01/03/13 | |
| REVIEWED | CAH/KNL | 01/10/13 | |

HANSON
Professional Services Inc. 2013
Hanson Professional Services Inc.
1525 South Sixth Street
Springfield, Illinois 62703-2986
Ph: (217) 788-2450 Fax: (217) 788-2503
www.hanson-inc.com
Offices Nationwide

REALIGN TAXIWAY "A"
ELECTRICAL DETAILS
SHEET 3
29 of 42 sheets