

CONSTRUCTION PLANS FOR OLNEY-NOBLE AIRPORT OLNEY, RICHLAND COUNTY, ILLINOIS REPLACE THE LIGHTS AND CABLES ON RUNWAY 11-29

SCOPE OF WORK

THIS PROJECT CONSISTS OF THE REMOVAL AND REPLACEMENT OF THE MEDIUM INTENSITY RUNWAY LIGHTS AND CABLE ON RUNWAY 11-29. THIS PROJECT INCLUDES THE INSTALLATION OF MEDIUM INTENSITY TAXIWAY LIGHTS ON BOTH TURNAROUNDS LOCATED ON RUNWAY 11-29 AS WELL AS TAXI GUIDANCE SIGNS AT THE INTERSECTION WITH RUNWAY 3-21.

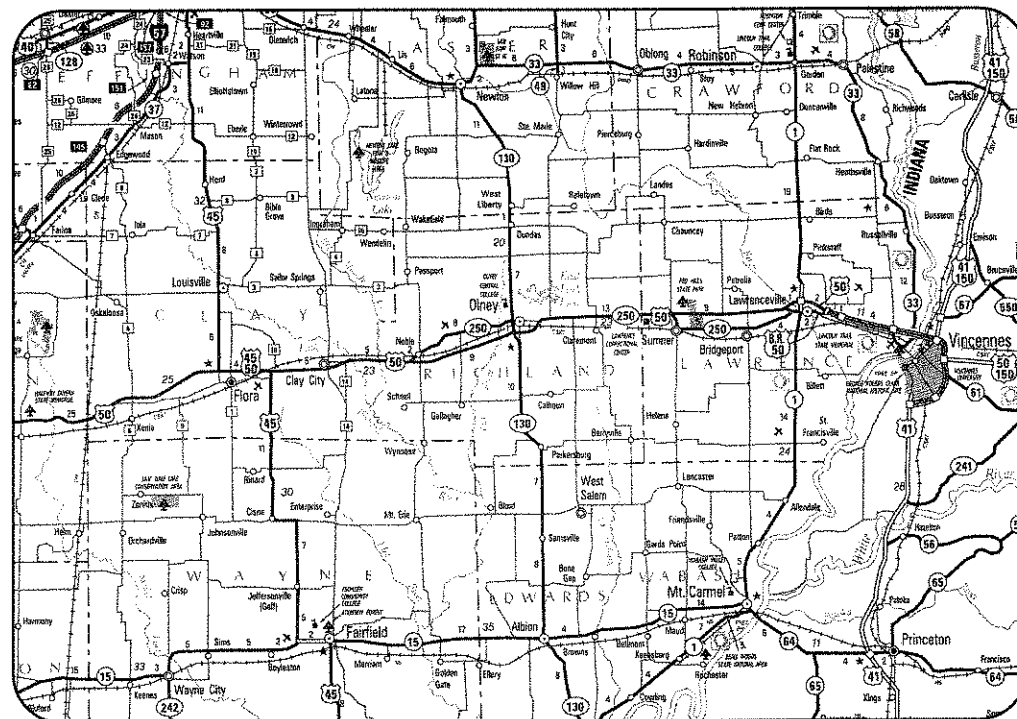
ADDITIVE ALTERNATE NO. 1

ADDITIVE ALTERNATE NO. 1 WILL CONSIST OF THE UPGRADE OF THE MEDIUM INTENSITY RUNWAY LIGHTS TO TYPE L-861 (L) WITH LED (LIGHT EMITTING DIODE) ILLUMINATION, UPGRADE OF THE MEDIUM INTENSITY THRESHOLD LIGHTS TO TYPE L-861E(L) WITH LED ILLUMINATION, UPGRADE OF THE MEDIUM INTENSITY TAXIWAY LIGHTS TO TYPE L-861T(L) WITH LED ILLUMINATION AND UPGRADE OF THE TAXI GUIDANCE SIGNS TO TYPE L-858(L) WITH LED ILLUMINATION.

ILL. PROJ.: OLY-4254
BLOCK GRANT: 3-17-0076-B13
LATITUDE: 38° 44' 00"
LONGITUDE: 88° 10' 33"
ELEVATION: 481.0' M.S.L.
DATE: DECEMBER 14, 2012



LOCATION OF COUNTY



LOCATION



COVERING
ELECTRICAL
DESIGN



COVERS
CIVIL DESIGN



Hanson Professional Services Inc.
ELECTRICAL ENGINEER

Submitted by: *Kevin N. Lightfoot* ENG'R

Date Submitted: 4/10/2013

Lics. Exp. Date: NOVEMBER 30, 2013



Hanson Professional Services Inc.

Submitted by: *Charles A. Hagloch* ENG'R

Date Submitted: 4/10/2013

Lics. Exp. Date: NOVEMBER 30, 2013

OLNEY-NOBLE AIRPORT AUTHORITY

Approved: _____ CHAIRMAN

Date: _____

Approved: *Sue Meichels* SECRETARY

Date: 12-07-12

REVISION	DATE

OLNEY-NOBLE AIRPORT
OLNEY, ILLINOIS

Hanson Proj. No. 12A0054	11/08/12
Filename: G-001-CVR.dwg	BAK
Scale: NOT TO SCALE	BAK
Date: 12/14/2012	CAH/KNL
LAYOUT	12/05/12
DRAWN	11/08/12
REVIEWED	12/05/12

HANSON
Hanson Professional Services Inc.
1524 South Sixth Street
Springfield, Illinois 62703-2886
PH: (217) 789-2450 Fax: (217) 788-2503
www.hanson-inc.com
Offices Nationwide

REPLACE MIRLON
RUNWAY 11-29

COVER SHEET

APR 10, 2013 3:14 PM R:\CADD\394
p:\s\sp\394\hanson.com\hanson\Projects\Documents\12\oln\12A0054\12A0054\CAD\Airport\Sheet\G-001-CVR

IL PROJ.: OLY-4254 BLOCK GRANT: 3-17-0076-B13

SUMMARY OF QUANTITIES

ITEM NO.	DESCRIPTION	UNIT	TOTAL QUANTITIES	AS BUILT QUANTITIES
AR108158	1/C #8 5 KV UG CABLE IN UD	L.F.	12,056	
AR110013	3" DIRECTIONAL BORE	L.F.	282	
AR125410	MITL-STAKE MOUNTED	EACH	33	
AR125444	TAXI GUIDANCE SIGN, 4 CHARACTER	EACH	2	
AR125505	MIRL, STAKE MOUNTED	EACH	30	
AR125510	MIRL, BASE MOUNTED	EACH	12	
AR125540	MI THRESHOLD LIGHT STAKE MTD	EACH	14	
AR125901	REMOVE STAKE MOUNTED LIGHT	EACH	40	
AR125902	REMOVE BASE MOUNTED LIGHT	EACH	10	
AR150510	ENGINEER'S FIELD OFFICE	L.S.	1	
AR150520	MOBILIZATION	L.S.	1	

SUMMARY OF QUANTITIES - ADDITIVE ALTERNATE NO. 1

ITEM NO.	DESCRIPTION	UNIT	TOTAL QUANTITIES	AS BUILT QUANTITIES
AS800412	4 CHARACTER SIGN LED UPGRADE	EACH	2	
AS800413	MIRL LED UPGRADE	EACH	42	
AS800414	MI THRESHOLD LIGHT LED UPGRADE	EACH	14	
AS800592	MITL LED UPGRADE	EACH	33	

GENERAL NOTES:

QUANTITIES
PAYMENT WILL BE MADE UNDER THE ITEM NUMBERS, DESCRIPTIONS AND UNITS NOTED IN THE ABOVE TABLE IN ACCORDANCE WITH THE BASIS OF PAYMENT FOR EACH RESPECTIVE WORK ITEM COMPLETED AND ACCEPTED BY THE ENGINEER.

CERTIFIED PAYROLLS
THE RESIDENT ENGINEER CANNOT FORWARD CONSTRUCTION REPORTS TO THE ILLINOIS DIVISION OF AERONAUTICS FOR PROCESSING UNTIL ALL CERTIFIED PAYROLLS FOR THE PERIOD HAVE BEEN RECEIVED.

MATERIAL CERTIFICATIONS
COMPLETED WORK CANNOT BE PLACED ON A CONSTRUCTION REPORT UNTIL ALL MATERIAL CERTIFICATIONS FOR THAT PAY ITEM HAVE BEEN RECEIVED, REVIEWED AND ACCEPTED BY THE RESIDENT ENGINEER.

RUNWAY CLOSURE SCHEDULING
THE CONTRACTOR SHALL NOTIFY THE AIRPORT MANAGER SEVEN DAYS IN ADVANCE OF THE COMMENCEMENT OF WORK, WHICH WOULD NECESSITATE THE CLOSING OF THE RUNWAY OR CLOSING OF THE AIRPORT.

UTILITY NOTE

THE LOCATION, SIZE, AND TYPE OF MATERIAL OF EXISTING UNDERGROUND AND/OR ABOVEGROUND UTILITIES INDICATED ON THE PLANS ARE NOT REPRESENTED AS BEING ACCURATE, SUFFICIENT OR COMPLETE. NEITHER THE OWNER NOR THE ENGINEER ASSUMES ANY RESPONSIBILITY WHATEVER IN RESPECT TO THE ACCURACY, COMPLETENESS, OR SUFFICIENCY OF THE INFORMATION. THERE IS NO GUARANTEE, EITHER EXPRESSED OR IMPLIED, THAT THE LOCATIONS, SIZE AND TYPE OF MATERIAL OF EXISTING UNDERGROUND UTILITIES INDICATED ARE REPRESENTATIVE OF THOSE TO BE ENCOUNTERED IN THE CONSTRUCTION. IT SHALL BE THE CONTRACTOR'S RESPONSIBILITY TO DETERMINE THE ACTUAL LOCATION OF ALL SUCH FACILITIES, INCLUDING SERVICE CONNECTIONS TO UNDERGROUND UTILITIES. PRIOR TO CONSTRUCTION, THE CONTRACTOR SHALL NOTIFY THE UTILITY COMPANIES OF HIS OPERATIONAL PLANS AND SHALL OBTAIN FROM THE RESPECTIVE UTILITY COMPANIES DETAILED INFORMATION AND ASSISTANCE RELATIVE TO THE LOCATION OF THEIR FACILITIES AND THE WORKING SCHEDULE OF THE COMPANIES FOR REMOVAL OR ADJUSTMENT WHERE REQUIRED. IN THE EVENT AN UNEXPECTED UTILITY INTERFERENCE IS ENCOUNTERED DURING CONSTRUCTION, THE CONTRACTOR SHALL IMMEDIATELY NOTIFY THE UTILITY COMPANY OF JURISDICTION. THE OWNER'S REPRESENTATIVE AND/OR THE RESIDENT ENGINEER SHALL ALSO BE IMMEDIATELY NOTIFIED. ANY DAMAGE TO SUCH MAINS AND SERVICES SHALL BE RESTORED TO SERVICE AT ONCE AND PAID FOR BY THE CONTRACTOR AT NO ADDITIONAL COST TO THE CONTRACT. ALL UTILITY CABLES AND LINES SHALL BE LOCATED BY THE RESPECTIVE UTILITY. **CONTACT JULIE (JOINT UTILITY LOCATION INFORMATION FOR EXCAVATORS) FOR UTILITY INFORMATION, PHONE: 1-800-892-0123.** CONTACT THE FAA (FEDERAL AVIATION ADMINISTRATION) FOR ASSISTANCE IN LOCATING FAA CABLES AND UTILITIES. LOCATION OF FAA POWER, CONTROL, AND COMMUNICATION CABLES SHALL BE COORDINATED WITH AND/OR LOCATED BY THE FAA. ALSO CONTACT AIRPORT DIRECTOR/MANAGER AND AIRPORT PERSONNEL FOR ASSISTANCE IN LOCATING UNDERGROUND AIRPORT CABLES AND/OR UTILITIES. ALSO COORDINATE WORK WITH ALL ABOVEGROUND UTILITIES.

J.U.L.I.E. INFORMATION

COUNTY _____ RICHLAND
CITY _____ OLNEY
TOWNSHIP _____ NOBLE
SECTION NO. _____ 2
ADDRESS _____ OLNEY-NOBLE AIRPORT
P.O. BOX 717
OLNEY, ILLINOIS 62450



**Know what's below.
Call before you dig.**

INDEX TO SHEETS

SHEET NO.	DESCRIPTION
1	COVER SHEET
2	SUMMARY OF QUANTITIES AND INDEX TO SHEETS
3	PROPOSED SAFETY PLAN
4	EXISTING ELECTRICAL PLAN STA. 100+00 TO STA. 127+00
5	EXISTING ELECTRICAL PLAN STA. 127+00 TO STA. 141+00
6	PROPOSED ELECTRICAL PLAN STA. 100+00 TO STA. 127+00
7	PROPOSED ELECTRICAL PLAN STA. 127+00 TO STA. 141+00
8	AIRFIELD LIGHTING NOTES AND SCHEDULES
9	ELECTRICAL DETAILS SHEET 1
10	ELECTRICAL DETAILS SHEET 2
11	ELECTRICAL DETAILS SHEET 3
12	ELECTRICAL DETAILS SHEET 4
13	ELECTRICAL NOTES SHEET 1
14	ELECTRICAL NOTES SHEET 2
15	ELECTRICAL LEGEND, ABBREVIATIONS & NOTES
16	HIGH VOLTAGE WIRING SCHEMATIC FOR RUNWAY 11-29
17	GROUNDING DETAILS
18	GROUNDING NOTES

REVISION

DATE

**OLNEY-NOBLE AIRPORT
OLNEY, ILLINOIS**

IL PROJ.: OLY-4254 BLOCK GRANT: 3-17-0076-B13

Hanson Proj. No. 12A0054

Filename G-002-FLP.dwg

Scale NOT TO SCALE

Date 12/14/2012

LAYOUT BAK 11/08/12

DRAWN BAK 11/08/12

REVIEWED CAH 12/05/12



© Copyright Hanson Professional Services Inc. 2013
Hanson Professional Services Inc.
1525 South Sixth Street
Springfield, Illinois 62703-2886
Ph: (217) 788-2450 Fax: (217) 788-2503
www.hanson-inc.com
Offices Nationwide

REPLACE MIRL ON
RUNWAY 11-29

SUMMARY OF QUANTITIES
AND INDEX TO SHEETS

AIRPORT SECURITY NOTE

AIRPORT SECURITY WILL BE MAINTAINED AT ALL TIMES. THE CONTRACTOR WILL CLOSE AND LOCK THE EXISTING GATE IN THE HAUL ROUTE AT THE END OF EACH WORKING DAY.

HEIGHT OF CONSTRUCTION EQUIPMENT

THE MAXIMUM ANTICIPATED HEIGHT OF THE CONSTRUCTION EQUIPMENT WILL BE 25 FEET. THE TALLEST EQUIPMENT IS EXPECTED TO BE A LINE OR CONCRETE TRUCK.

NOTE

ALL CONSTRUCTION/OPERATIONS ARE TO BE PERFORMED IN ACCORDANCE WITH FAA ADVISORY CIRCULAR (AC) 150/5370-2F "OPERATIONAL SAFETY ON AIRPORTS DURING CONSTRUCTION" AND AC 150/5300-13A "AIRPORT DESIGN".

ALL CONSTRUCTION EQUIPMENT ON THE AIRPORT SHALL BE MARKED, LIGHTED AND/OR FLAGGED IN ACCORDANCE WITH AC 150/5210-5 AND 70/7460-1.

HAUL ROUTE AND VEHICLE PARKING

THE CONTRACTOR WILL USE THE DESIGNATED HAUL ROUTE AND PARKING AREA AS SHOWN ON THIS SHEET. THE PROPOSED PARKING AREA WILL BE 200' X 200'. THE CONTRACTOR WILL BE REQUIRED TO MAINTAIN THE PROPOSED HAUL ROUTE AND PARKING AREA THROUGHOUT THE COURSE OF THE PROJECT. ANY AREAS DAMAGED OUTSIDE OF THESE AREAS WILL BE REPAIRED BY THE CONTRACTOR AND AT THE CONTRACTOR'S OWN EXPENSE. AT THE CONCLUSION OF THE PROJECT THE CONTRACTOR WILL RESTORE THE PARKING AREA AND HAUL ROUTE TO THEIR ORIGINAL STATE. RESTORATION OF THE HAUL ROUTE AND PARKING AREA WILL BE CONSIDERED INCIDENTAL TO THE PROJECT AND NO ADDITIONAL COMPENSATION WILL BE ALLOWED.

CONTRACTOR RESPONSIBILITIES

THE CONTRACTOR'S EQUIPMENT PARKING AND STORAGE AREA WILL BE AS SHOWN ON THIS SHEET. THE CONTRACTOR'S EMPLOYEES WILL PARK THEIR VEHICLES IN THIS AREA. ONLY CONTRACTOR VEHICLES WILL BE ALLOWED OUTSIDE THIS AREA.

THE CONTRACTOR AND HIS EMPLOYEES WILL BE RESTRICTED TO THE WORK AREA AND ALL OTHER AREAS OF THE AIRPORT ARE "OFF LIMITS" TO THEM.

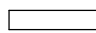





ALL WORK PERFORMED SHALL BE DONE IN A ORDERLY AND EFFECTIVE MANNER TO MINIMIZE RUNWAY CLOSURE.

NO TRENCHES OR HOLES WILL REMAIN OPEN OVERNIGHT.

BARRICADES AND TRAFFIC CONES

IT WILL BE THE CONTRACTOR'S RESPONSIBILITY TO PLACE AND MAINTAIN BARRICADES AND TRAFFIC CONES AS SHOWN AND AS DIRECTED BY THE AIRPORT MANAGER. THE BARRICADES WILL BE EQUIPPED WITH RED FLASHING OR RED STEADY-BURN LIGHTS AND 20" SQUARE ORANGE FLAGS. THE BARRICADES, THEIR MAINTENANCE, PLACEMENT AND REMOVAL WILL BE CONSIDERED AS AN INCIDENTAL ITEM TO THE CONTRACT AND NO ADDITIONAL COMPENSATION WILL BE ALLOWED. INCLUDE BARRICADES FOR TAXIWAYS TO COORDINATE WITH THE RESPECTIVE RUNWAY CLOSURE. WHEN TAXIWAYS ARE CLOSED PLACE BARRICADES AT EACH END OF TAXIWAY AS NEEDED. WHEN BOTH RUNWAYS ARE CLOSED BARRICADES SHALL BE PLACED ON ALL TAXIWAYS LEADING TO THE RUNWAYS.

LEGEND

-  EXISTING IMPROVEMENTS
-  PROPOSED IMPROVEMENTS
-  EXISTING BUILDINGS
-  PROPOSED HAUL ROUTE AND EQUIPMENT PARKING AREA
-  PROPOSED BARRICADES WHEN RWY. 11-29 IS CLOSED
-  PROPOSED BARRICADES WHEN RWY. 3-21 IS CLOSED

SCOPE OF WORK

THIS PROJECT CONSISTS OF THE REMOVAL AND REPLACEMENT OF THE MEDIUM INTENSITY RUNWAY LIGHTS AND CABLE ON RUNWAY 11-29. ASSOCIATED WORK INCLUDES INSTALLATION OF MEDIUM INTENSITY TAXIWAY LIGHTS ON BOTH TURNAROUNDS LOCATED ON RUNWAY 11-29 AS WELL AS TAXI GUIDANCE SIGNS AT THE INTERSECTION WITH RUNWAY 3-21.

ADDITIVE ALTERNATE NO. 1

ADDITIVE ALTERNATE NO. 1 WILL CONSIST OF THE UPGRADE OF THE MEDIUM INTENSITY RUNWAY LIGHTS TO TYPE L-861(L) WITH LED (LIGHT EMITTING DIODE) ILLUMINATION, UPGRADE OF THE MEDIUM INTENSITY THRESHOLD LIGHTS TO TYPE L-861E(L) WITH LED ILLUMINATION, UPGRADE OF THE MEDIUM INTENSITY TAXIWAY LIGHTS TO TYPE L-861T(L) WITH LED ILLUMINATION AND UPGRADE TO THE TAXI GUIDANCE SIGNS TO TYPE L-858(L) WITH LED ILLUMINATION.

EROSION CONTROL

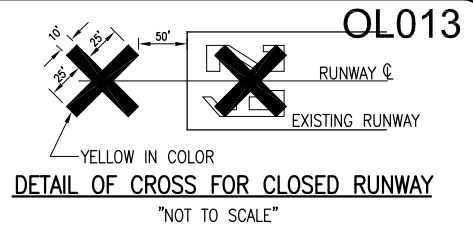
THIS PROJECT WILL DISTURB LESS THAN 1 ACRE OF LAND, THEREFORE NO N.P.D.E.S. PERMIT WILL BE REQUIRED.

AIRCRAFT OPERATION LINE

THE CONTRACTOR WILL LOCATE THIS LINE AT THE START OF CONSTRUCTION AND WILL PLACE FLAGGED LATHE EVERY 150' ALONG IT. THIS LINE WILL BE THE LIMITS THAT ALL CONTRACTOR PERSONNEL MAY VENTURE WHEN A RUNWAY IS NOT CLOSED. THE CONTRACTOR WILL MAINTAIN THE LATHE LINE FOR RUNWAYS.

CRITICAL POINT DATA

POINT NO. 1	POINT NO. 2
LATITUDE: 38° 43' 19.46"	LATITUDE: 38° 43' 18.99"
LONGITUDE: 89° 10' 26.49"	LONGITUDE: 89° 10' 24.58"
ELEVATION: 471.4 M.S.L.	ELEVATION: 471.1 M.S.L.



NOTE:

COST OF CONSTRUCTING, PLACING, MAINTAINING AND REMOVING CROSSES WILL BE CONSIDERED INCIDENTAL TO THE CONTRACT AND NO ADDITIONAL COMPENSATION WILL BE ALLOWED. THE CROSSES WILL BE YELLOW IN COLOR AND SHALL BE MADE OF A SUITABLE MATERIAL AS APPROVED BY THE AIRPORT MANAGER. THE CROSSES WILL BE PLACED OVER THE NUMERALS AND SECURED IN A MANNER APPROVED BY THE MANAGER. THE PROPOSED CROSSES WILL BE PLACED EACH DAY THE RUNWAY IS CLOSED AND REMOVED WHEN THE RUNWAY IS RE-OPENED. THE CONTRACTOR WILL BE RESPONSIBLE FOR THE PLACEMENT AND REMOVAL OF THE CROSSES. NO ADDITIONAL COMPENSATION WILL BE ALLOWED.

PROPOSED SAFETY PLAN

GENERAL - THE OLNEY-NOBLE AIRPORT IS COMPRISED OF TWO RUNWAYS. THE PROPOSED CONSTRUCTION WILL NECESSITATE CLOSING BOTH RUNWAYS. ANY TIME THE CONTRACTOR IS WORKING WITHIN 75' OF A RUNWAY CENTERLINE THAT RUNWAY WILL BE CLOSED. RUNWAY 11-29 SHALL BE CLOSED AT THE START OF THIS PROJECT AND WILL REMAINED CLOSED THROUGHOUT THE CONSTRUCTION WEEK. THE CONTRACTOR SHALL BACKFILL ALL HOLES AND TRENCHES AT THE END OF EACH DAY AND MOVE ALL EQUIPMENT AND MATERIAL AT LEAST 250 FEET FROM RUNWAY 11-29'S CENTERLINE. AT THE END OF THE CONSTRUCTION WEEK THE CONTRACTOR WILL OPEN RUNWAY 11-29 TO "DAY TIME OPERATIONS ONLY". PRIOR TO OPENING THE RUNWAY A REPRESENTATIVE OF THE AIRPORT, THE CONTRACTOR AND THE RESIDENT ENGINEER WILL INSPECT RUNWAY 11-29 TO BE SURE THE PAVEMENT IS CLEAN, ALL HOLES HAVE BEEN BACKFILLED AND ALL EQUIPMENT/MATERIAL IS AT LEAST 250 FEET FROM THE RUNWAY CENTERLINE. RUNWAY 3-21 SHALL BE CLOSED ONLY FOR THE WORK LOCATED WITHIN THE INTERSECTION OF THE TWO RUNWAYS. RUNWAY 3-21 SHALL BE RE-OPENED AT THE END OF EACH CONSTRUCTION DAY. ALL LIGHTING CIRCUITS SHALL BE OPERATIONAL ON RUNWAY 3-21 PRIOR TO THE CONTRACTOR LEAVING FOR THE DAY/WEEKEND. WHEN THE CONTRACTOR IS WORKING WITHIN 66 FEET OF A TAXIWAY CENTERLINE THE TAXIWAY SHALL BE CLOSED. NO WORK SHALL OCCUR WITHIN 66 FEET OF AN ACTIVE TAXIWAY CENTERLINE. ALL WORK INCLUDED IN OPENING AND CLOSING THE RUNWAY/TAXIWAY WILL BE CONSIDERED INCIDENTAL TO THE PROJECT AND NO ADDITIONAL COMPENSATION WILL BE ALLOWED.

OPEN TRENCHES OR EXCAVATIONS ARE NOT PERMITTED WITHIN THE RUNWAY OR TAXIWAY SAFETY AREAS WHILE THE RESPECTIVE RUNWAY OR TAXIWAY IS OPEN. SMOOTH GRADE ALL AREAS WITHIN THE SAFETY AREA TO THE SATISFACTION OF THE RESIDENT ENGINEER/RESIDENT PROJECT REPRESENTATIVE PRIOR TO RE-OPENING THE RUNWAY OR TAXIWAY. IF THE RUNWAY OR TAXIWAY MUST BE OPENED BEFORE EXCAVATIONS ARE BACKFILLED, COVER THE EXCAVATIONS APPROPRIATELY. COVERINGS FOR OPEN TRENCHES OR EXCAVATIONS MUST BE OF SUFFICIENT STRENGTH TO SUPPORT THE HEAVIEST AIRCRAFT OPERATING ON THE RUNWAY/TAXIWAY.

IDENTIFICATION - WHEN THE CONTRACTORS VEHICLES AND EQUIPMENT ARE ON THE AIRPORT THEY SHALL BE PROPERLY MARKED WITH THREE (3') FOOT SQUARE CHECKERED FLAGS (INTERNATIONAL ORANGE AND WHITE). THE CONTRACTOR WILL ALSO PROVIDE WORKERS WITH SOME TYPE OF TAG OR GARMENT TO IDENTIFY THE PERSON AS BEING PART OF THE CONSTRUCTION CREW.

RADIO CONTROL - THE CONTRACTOR WILL BE REQUIRED TO BE IN TWO-WAY RADIO CONTACT (123.00 MHz.) WITH THE AIRPORT UNICOM. THIS WILL KEEP THE CONTRACTOR IN CONSTANT CONTACT WITH THE OLNEY-NOBLE AIRPORT AND ENABLE THE AIRPORT TO IMMEDIATELY CONTACT THE CONTRACTOR IN CASE OF AN AERONAUTIC EMERGENCY THAT WOULD REQUIRE ACTION BY THE CONTRACTOR AND/OR HIS PERSONNEL.

150-ENGINEER'S FIELD OFFICE NOTES

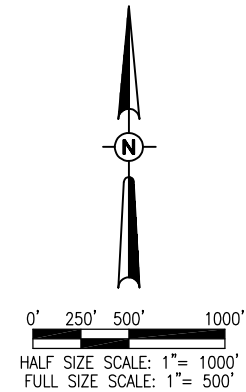
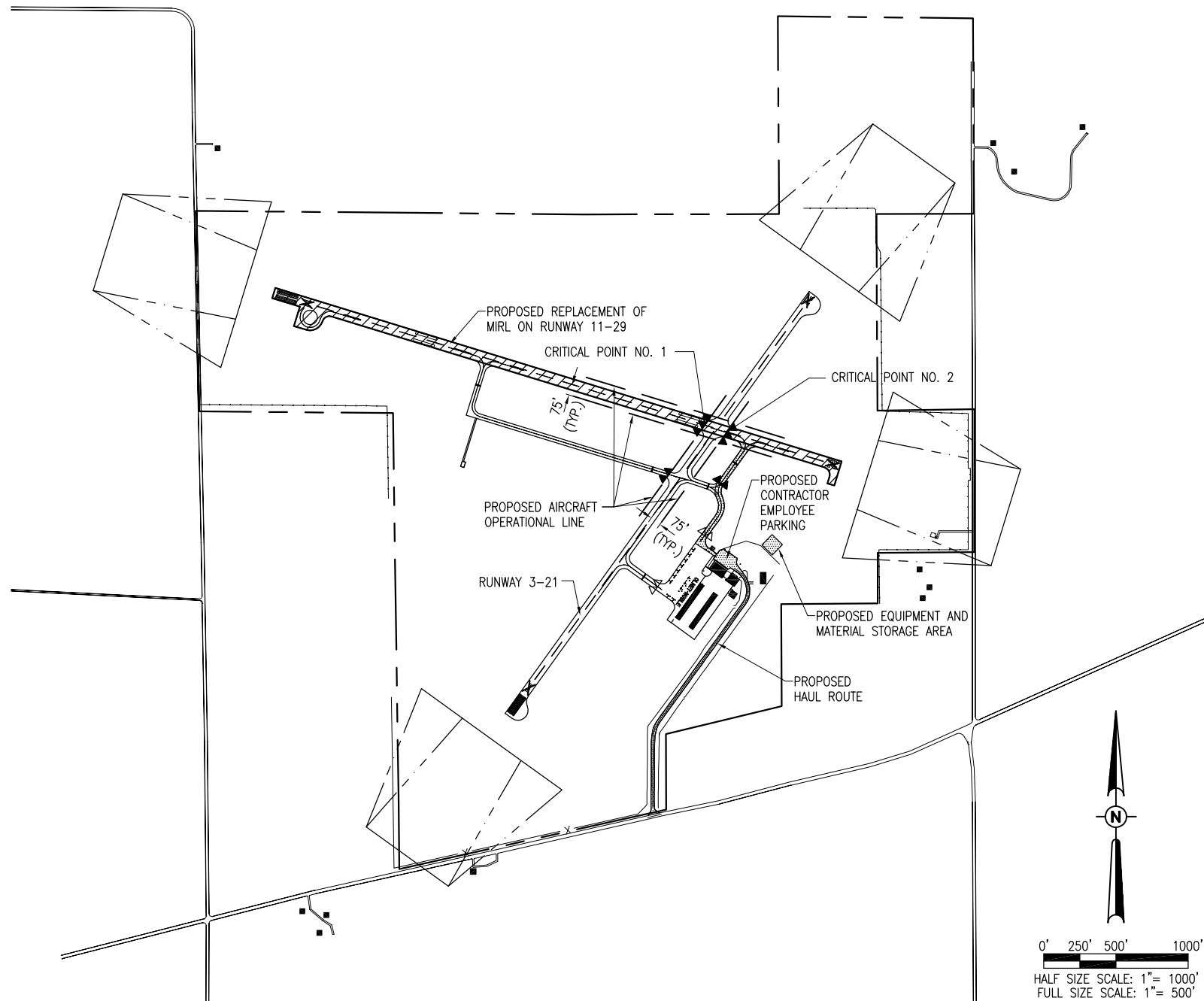
THE PROPOSED ENGINEER'S FIELD OFFICE WILL BE FURNISHED, MAINTAINED, AND REMOVED IN ACCORDANCE WITH ITEM AR150510 "ENGINEER'S FIELD OFFICE" AS STATED ON PAGE 49 OF THE STANDARD SPECIFICATIONS FOR CONSTRUCTION OF AIRPORTS APRIL 1, 2012.

THE LOCATION OF THE PROPOSED ENGINEER'S FIELD OFFICE WILL BE DETERMINED AT THE PRE-CONSTRUCTION MEETING.


THE ENGINEERING FIRM WILL MAKE PAYMENT FOR ALL LONG DISTANCE TELEPHONE CALLS IN EXCESS OF ONE HUNDRED DOLLARS (\$100.00) PER MONTH.

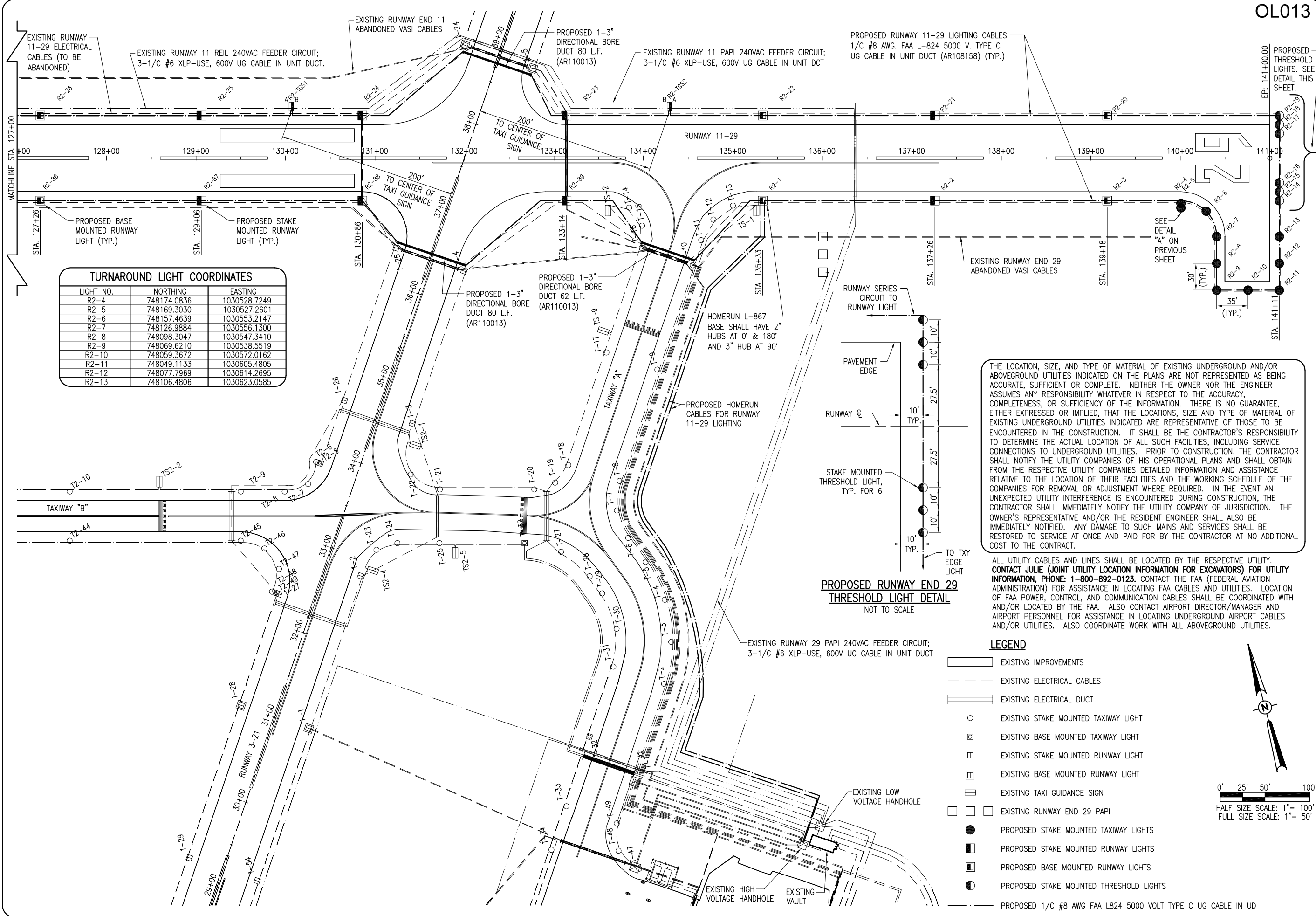
THE CONTRACTOR WILL FURNISH A WIRELESS PHONE TO THE RESIDENT ENGINEER FOR HIS EXCLUSIVE USE FOR THE DURATION OF THIS PROJECT. THE RESIDENT ENGINEER WILL USE THIS PHONE FOR PROJECT BUSINESS ONLY. THE CONTRACTOR WILL BE RESPONSIBLE FOR ALL CHARGES ASSOCIATED WITH THIS CELL PHONE.

THE PROPOSED ENGINEER'S FIELD OFFICE WILL BE PAID FOR UNDER ITEMS: AR150510 ENGINEER'S FIELD OFFICE _____ 1 L.S.



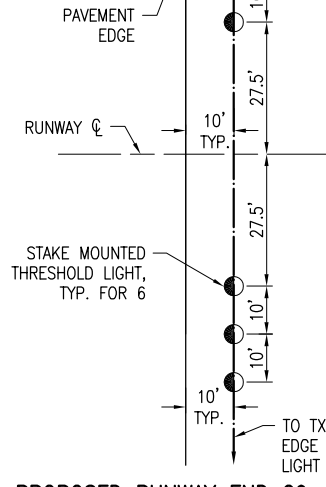
APR 10, 2013 2:47 PM K:\CADD\394 Projects\Documents\12\120054\120054.dwg (V:\port\Sheet) G-003-SFY

REVISION					
DATE					
OLNEY-NOBLE AIRPORT OLNEY, ILLINOIS					
BLOCK GRANT: 3-17-0076-B13 IL PROJ.: OLY-4254					
Hanson Proj. No. 12A0054 Filename: G-003-SFY.dwg Scale: 1" = 500' Date: 12/14/2012	LAYOUT	BAK	11/08/12	DRAWN	BAK
	REVIEWED	CAH	12/05/12		
 <p style="font-size: x-small;">© Copyright Hanson Professional Services Inc. 2013 Hanson Professional Services Inc. 1525 South Sixth Street Springfield, Illinois 62703-2986 Ph: (217) 788-2450 Fax: (217) 788-2503 www.hanson-inc.com Offices Nationwide</p>					
REPLACE MRL ON RUNWAY 11-29			PROPOSED SAFETY PLAN		
3					
3 of 18 sheets					



TURNAROUND LIGHT COORDINATES

LIGHT NO.	NORTHING	EASTING
R2-4	748174.0836	1030528.7249
R2-5	748169.3030	1030527.2601
R2-6	748157.4639	1030553.2147
R2-7	748126.9884	1030556.1300
R2-8	748098.3047	1030547.3410
R2-9	748069.6210	1030538.5519
R2-10	748059.3672	1030572.0162
R2-11	748049.1133	1030605.4805
R2-12	748077.7969	1030614.2695
R2-13	748106.4806	1030623.0585

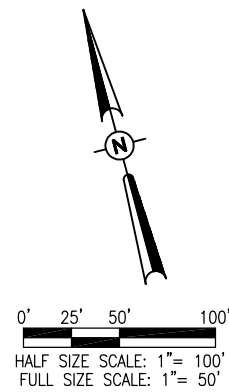


THE LOCATION, SIZE, AND TYPE OF MATERIAL OF EXISTING UNDERGROUND AND/OR ABOVEGROUND UTILITIES INDICATED ON THE PLANS ARE NOT REPRESENTED AS BEING ACCURATE, SUFFICIENT OR COMPLETE. NEITHER THE OWNER NOR THE ENGINEER ASSUMES ANY RESPONSIBILITY WHATEVER IN RESPECT TO THE ACCURACY, COMPLETENESS, OR SUFFICIENCY OF THE INFORMATION. THERE IS NO GUARANTEE, EITHER EXPRESSED OR IMPLIED, THAT THE LOCATIONS, SIZE AND TYPE OF MATERIAL OF EXISTING UNDERGROUND UTILITIES INDICATED ARE REPRESENTATIVE OF THOSE TO BE ENCOUNTERED IN THE CONSTRUCTION. IT SHALL BE THE CONTRACTOR'S RESPONSIBILITY TO DETERMINE THE ACTUAL LOCATION OF ALL SUCH FACILITIES, INCLUDING SERVICE CONNECTIONS TO UNDERGROUND UTILITIES. PRIOR TO CONSTRUCTION, THE CONTRACTOR SHALL NOTIFY THE UTILITY COMPANIES OF HIS OPERATIONAL PLANS AND SHALL OBTAIN FROM THE RESPECTIVE UTILITY COMPANIES DETAILED INFORMATION AND ASSISTANCE RELATIVE TO THE LOCATION OF THEIR FACILITIES AND THE WORKING SCHEDULE OF THE COMPANIES FOR REMOVAL OR ADJUSTMENT WHERE REQUIRED. IN THE EVENT AN UNEXPECTED UTILITY INTERFERENCE IS ENCOUNTERED DURING CONSTRUCTION, THE CONTRACTOR SHALL IMMEDIATELY NOTIFY THE UTILITY COMPANY OF JURISDICTION. THE OWNER'S REPRESENTATIVE AND/OR THE RESIDENT ENGINEER SHALL ALSO BE IMMEDIATELY NOTIFIED. ANY DAMAGE TO SUCH MAINS AND SERVICES SHALL BE RESTORED TO SERVICE AT ONCE AND PAID FOR BY THE CONTRACTOR AT NO ADDITIONAL COST TO THE CONTRACT.

ALL UTILITY CABLES AND LINES SHALL BE LOCATED BY THE RESPECTIVE UTILITY. **CONTACT JULIE (JOINT UTILITY LOCATION INFORMATION FOR EXCAVATORS) FOR UTILITY INFORMATION, PHONE: 1-800-892-0123.** CONTACT THE FAA (FEDERAL AVIATION ADMINISTRATION) FOR ASSISTANCE IN LOCATING FAA CABLES AND UTILITIES. LOCATION OF FAA POWER, CONTROL, AND COMMUNICATION CABLES SHALL BE COORDINATED WITH AND/OR LOCATED BY THE FAA. ALSO CONTACT AIRPORT DIRECTOR/MANAGER AND AIRPORT PERSONNEL FOR ASSISTANCE IN LOCATING UNDERGROUND AIRPORT CABLES AND/OR UTILITIES. ALSO COORDINATE WORK WITH ALL ABOVEGROUND UTILITIES.

LEGEND

- EXISTING IMPROVEMENTS
- EXISTING ELECTRICAL CABLES
- EXISTING ELECTRICAL DUCT
- EXISTING STAKE MOUNTED TAXIWAY LIGHT
- EXISTING BASE MOUNTED TAXIWAY LIGHT
- EXISTING STAKE MOUNTED RUNWAY LIGHT
- EXISTING BASE MOUNTED RUNWAY LIGHT
- EXISTING TAXI GUIDANCE SIGN
- EXISTING RUNWAY END 29 PAPI
- PROPOSED STAKE MOUNTED TAXIWAY LIGHTS
- PROPOSED STAKE MOUNTED RUNWAY LIGHTS
- PROPOSED BASE MOUNTED RUNWAY LIGHTS
- PROPOSED STAKE MOUNTED THRESHOLD LIGHTS
- PROPOSED 1/C #8 AWG FAA L824 5000 VOLT TYPE C UG CABLE IN UD



REVISION

DATE	REVISION

OLNEY-NOBLE AIRPORT
OLNEY, ILLINOIS

IL PROJ.: OLY-4254 BLOCK GRANT: 3-17-0076-B13

Hanson Proj. No. 12A0054
Filename: C-142-ELEC.dwg
Scale: 1" = 50'
Date: 12/14/2012

LAYOUT	BAK	11/12/12
DRAWN	BAK	11/12/12
REVIEWED	CAH	12/05/12

HANSON
Professional Services Inc. 2013
Hanson Professional Services Inc.
1525 South Sixth Street
Springfield, Illinois 62703-2986
Ph: (217) 788-2450 Fax: (217) 788-2503
www.hanson-inc.com
Offices Nationwide

REPLACE MIRL ON
RUNWAY 11-29

PROPOSED ELECTRICAL
PLAN STA. 127+00 TO
STA. 141+00.67

7

7 of 18 sheets

APR 10, 2013 2:53 PM KINCAD00394
pw:\sps-svr306\hanson.dom\hanson Projects\Documents\12A0054\12A0054D\CAD\Airport\Sheet\C-142-ELEC

TAXI GUIDANCE SIGN NOTES


1. THE PROPOSED TAXI GUIDANCE SIGNS SHALL CONFORM TO ADVISORY CIRCULAR 150/5345 44J (OR LATEST ISSUE IN FORCE) AND BE FAA-APPROVED FOR TYPE L-858Y OR L-858Y(L) DIRECTION, DESTINATION, AND BOUNDARY SIGNS (BLACK LEGEND ON YELLOW BACKGROUND); TYPE L-858R OR L-858R(L) MANDATORY INSTRUCTION SIGN (BLACK OUTLINE ON OUTSIDE EDGE OF WHITE LEGEND ON RED BACKGROUND); AND/OR TYPE L-858L OR L-858L(L) LOCATION SIGN (YELLOW LEGEND AND BORDER ON BLACK BACKGROUND). THE SIGNS SHALL BE SIZE 1, 18-IN. SIGN FACE WITH A 12-IN. LEGEND; STYLE 2, POWERED FROM A 4.8 TO 6.6 AMP SERIES LIGHTING CIRCUIT; CLASS 2, FOR OPERATION FROM -40 DEGREES F TO 131 DEGREES F; MODE 2, TO WITHSTAND WIND LOADS OF 200 M.P.H., BASE-MOUNTED, DOUBLE-SIDED, AS SPECIFIED ON THE PLANS.
 2. THE PROPOSED TAXI GUIDANCE SIGNS SHALL BE LOCATED SUCH THAT THE CLOSEST SIDE OF THE SIGN IS 15' FROM THE PAVEMENT EDGE.
 3. THE PROPOSED TAXI GUIDANCE SIGNS WILL BE PAID FOR UNDER THE FOLLOWING ITEMS:
AR125444 TAXI GUIDANCE SIGN, 4 CHARACTER _____ PER EACH.
- AND ADDITIVE ALTERNATE FOR UPGRADE TO LED TYPE ILLUMINATION
AS800412 4 CHARACTER SIGN LED UPGRADE _____ PER EACH.

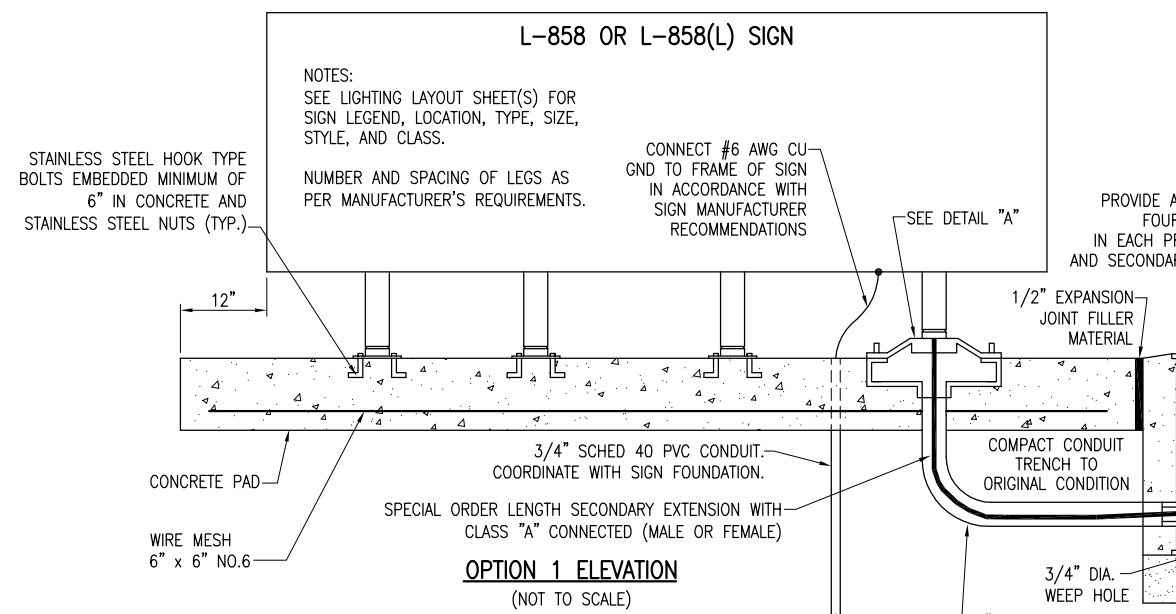
AIRFIELD LIGHTING NOTES

1. ALL WORK, POWER OUTAGES, AND/OR SHUT DOWN OF EXISTING SYSTEMS SHALL BE COORDINATED WITH THE AIRPORT DIRECTOR/MANAGER. ONCE SHUT DOWN, THE CIRCUITS SHALL BE LABELED AS SUCH TO PREVENT ACCIDENTAL ENERGIZING OF THE RESPECTIVE CIRCUITS. ALL PERSONNEL SHALL FOLLOW U.S. DEPARTMENT OF LABOR OCCUPATIONAL SAFETY & HEALTH ADMINISTRATION (OSHA) 29 CFR PART 1910 OCCUPATIONAL SAFETY & HEALTH STANDARDS FOR ELECTRICAL SAFETY AND LOCKOUT/TAGOUT PROCEDURES INCLUDING, BUT NOT LIMITED TO 29 CFR SECTION 1910.147 THE CONTROL OF HAZARDOUS ENERGY (LOCKOUT/TAGOUT).
2. CONTRACTOR SHALL FIELD VERIFY EXISTING SITE CONDITIONS. CONTRACTOR SHALL FIELD VERIFY RESPECTIVE CIRCUITS AND POWER SOURCES PRIOR TO REMOVING OR DISCONNECTING THE RESPECTIVE AIRFIELD LIGHTING, NAVAID, OR OTHER DEVICE.
3. PROPOSED RUNWAY, THRESHOLD, AND TAXIWAY LIGHTS SHALL BE PLACED 10' (FT.) FROM THE PAVEMENT EDGE UNLESS SHOWN OTHERWISE ON THESE CONSTRUCTION DRAWINGS. PROPOSED TAXI GUIDANCE SIGNS SHALL BE LOCATED SUCH THAT THE CLOSEST SIDE OF THE SIGN IS 15' FROM THE PAVEMENT EDGE, UNLESS SHOWN OTHERWISE.
4. PROPOSED RUNWAY LIGHTS, THRESHOLD LIGHTS, TAXIWAY LIGHTS, GUIDANCE SIGNS, OTHER AIRFIELD LIGHTING, SPLICE CANS, HANDHOLES, MANHOLES, ELECTRICAL DUCTS, AND CABLE SHALL BE INSTALLED AT THE LOCATIONS SHOWN AND IN COMPLIANCE WITH THE SPECIFICATIONS, SPECIAL PROVISIONS, RESPECTIVE DETAILS, AND MANUFACTURER'S RECOMMENDATIONS.
5. PROPOSED CABLE FOR RUNWAY AND TAXIWAY LIGHTING SHALL BE INSTALLED APPROXIMATELY 10' FROM THE PAVEMENT EDGE. CABLES SHALL BE PLACED A MINIMUM OF 18" BELOW FINISHED GRADE.
6. THE PROPOSED RUNWAY AND TAXIWAY LIGHTING CABLE SHALL BE 1/C, #8 AWG, FAA L-824, 5000 VOLT, TYPE C UNDERGROUND CABLE IN UNIT DUCT.
7. IN AREAS WHERE THERE IS A CONGESTION OF CABLES OR WHERE THE PROPOSED CABLE CROSSES AN EXISTING CABLE, THE CONTRACTOR IS REQUIRED TO HAND DIG THE TRENCH NECESSARY FOR THE PROPOSED CABLE. AT OTHER LOCATIONS, THE PROPOSED CABLE MAY BE TRENCHED OR PLOWED INTO PLACE. HAND DIGGING, TRENCHING AND/OR PLOWING WILL BE CONSIDERED INCIDENTAL TO THE PROPOSED CABLES AND NO ADDITIONAL COMPENSATION WILL BE ALLOWED.
8. PROPOSED RUNWAY LIGHTS SHALL BE FITTED WITH LENSES IN ACCORDANCE WITH THE "LIGHT LENS SCHEDULE". ALL PROPOSED TAXIWAY LIGHTS WILL BE FITTED WITH 360° BLUE LENSES.
9. ALL PROPOSED RUNWAY, THRESHOLD, AND TAXIWAY LIGHTS SHALL BE TAGGED BY THE CONTRACTOR IN ACCORDANCE WITH THE LIGHT NUMBERS SHOWN ON THESE CONSTRUCTION DRAWINGS.
10. SEE "TAXI GUIDANCE SIGN SCHEDULE" FOR INFO ON SIGN LEGENDS.
11. THE CONTRACTOR SHALL SECURE, IDENTIFY AND PLACE ALL TEMPORARY EXPOSED WIRING IN CONDUIT, DUCT OR UNIT DUCT TO PREVENT ELECTROCUTION AND FIRE IGNITION SOURCES AS PER THE REQUIREMENTS OF FAA AC 150/5370-2F, PART 218, PARAGRAPH C. ALL LABOR, MATERIALS, AND TIME NECESSARY TO COMPLY WITH THIS REQUIREMENT SHALL BE CONSIDERED INCIDENTAL TO THE CONTRACT AND NO ADDITIONAL COMPENSATION WILL BE ALLOWED.
12. HOMERUN CABLES FOR A RESPECTIVE CIRCUIT THAT ARE INSTALLED IN CONDUIT OR DUCT SHALL BE RUN TOGETHER IN THE SAME RACEWAY OR DUCT.
13. EXISTING AIRFIELD LIGHTING CABLES (SCHEDULED FOR REPLACEMENT) IN AREAS OF NEW WORK SHALL BE DISCONNECTED & REMOVED WHERE IN CONFLICT WITH NEW CONSTRUCTION. IN OTHER AREAS CABLES MAY BE ABANDONED IN PLACE.
14. THE CONTRACTOR IS REQUIRED TO FILL IN ALL HOLES AND DEPRESSIONS RESULTING FROM THE NEW WORK, WITH EARTH MATERIAL. THE AREAS SHALL BE COMPACTED TO PREVENT FUTURE SETTLEMENT AND FERTILIZED, SEEDED, AND MULCHED IN ACCORDANCE WITH ITEMS 901 AND 908 RESPECTIVELY.
15. NO CONNECTION TO AN ACTIVE LIGHTING CIRCUIT WILL BE BROKEN UNTIL THE CIRCUIT HAS BEEN TURNED OFF IN ACCORDANCE WITH NOTE 1.

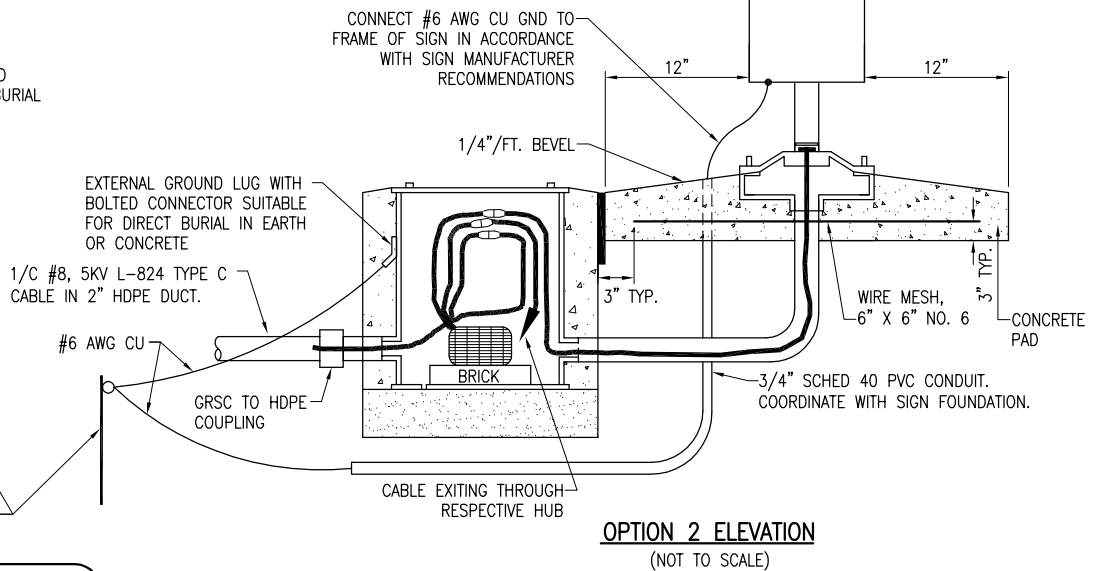
LIGHT LENS SCHEDULE FOR RUNWAY 1-19		
LIGHT NUMBERS	LENS	ORIENTATION
R2-1 TO R2-3	CLEAR WHITE/YELLOW	YELLOW SIDE FACING WEST
R2-4 TO R2-13	BLUE	- - -
R2-14 TO R2-19	RED/GREEN	RED SIDE FACING WEST (TOWARDS THRESHOLD)
R2-20 TO R2-29	CLEAR WHITE/YELLOW	YELLOW SIDE FACING WEST
R2-30 TO R2-40	CLEAR WHITE	- - -
R2-41 TO R2-48	RED/GREEN	RED SIDE FACING EAST (TOWARDS THRESHOLD)
R2-49	CLEAR WHITE	- - -
R2-50 TO R2-54	BLUE	- - -
R2-55	CLEAR WHITE	- - -
R2-56 TO R2-73	BLUE	- - -
R2-74 TO R2-82	CLEAR WHITE	- - -
R2-83 TO R2-89	CLEAR WHITE/YELLOW	YELLOW SIDE FACING WEST

TAXI GUIDANCE SIGN SCHEDULE			
SIGN NUMBERS	LOCATION	SIDE A	SIDE B
R2-TGS1	INTERSECTION OF RUNWAY 11 WITH RUNWAY 21-3	21-3	BLANK
R2-TGS2	INTERSECTION OF RUNWAY 29 WITH RUNWAY 3-21	3-21	BLANK

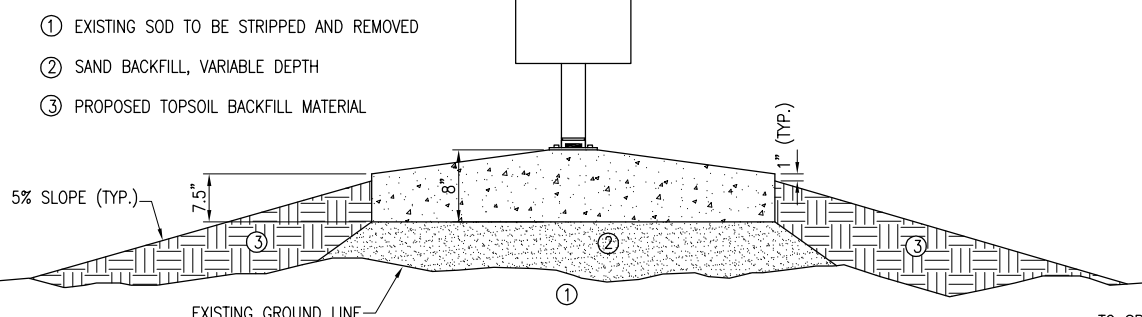
REVISION					
DATE					
OLNEY-NOBLE AIRPORT OLNEY, ILLINOIS					
IL PROJ.: OLY-4254 BLOCK GRANT: 3-17-0076-B13					
Hanson Proj. No. 12A0054	Filename: C-142-ELEC.dwg	Scale: 1" = 50'	Date: 12/14/2012	BAK 11/12/12	BAK 11/12/12
LAYOUT	DRAWN	REVIEWED	CAH	12/05/12	
 <small>© Copyright Hanson Professional Services Inc. 2013 Hanson Professional Services Inc. 1525 South Sixth Street Springfield, Illinois 62703-2886 Ph: (217) 788-2450 Fax: (217) 788-2503 www.hanson-inc.com Offices Nationwide</small>					
REPLACE MIRL ON RUNWAY 11-29			AIRFIELD LIGHTING NOTES AND SCHEDULES		
<div style="display: flex; justify-content: space-between; align-items: center;"> 8 8 of 18 sheets </div>					



OPTION 1 ELEVATION
(NOT TO SCALE)



OPTION 2 ELEVATION
(NOT TO SCALE)

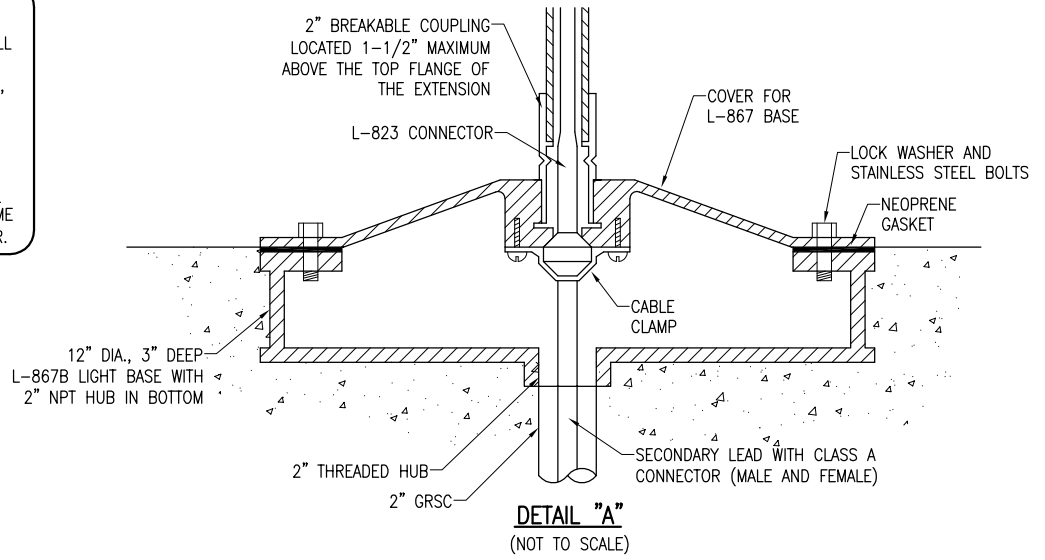


SIGN DETAIL
(NOT TO SCALE)

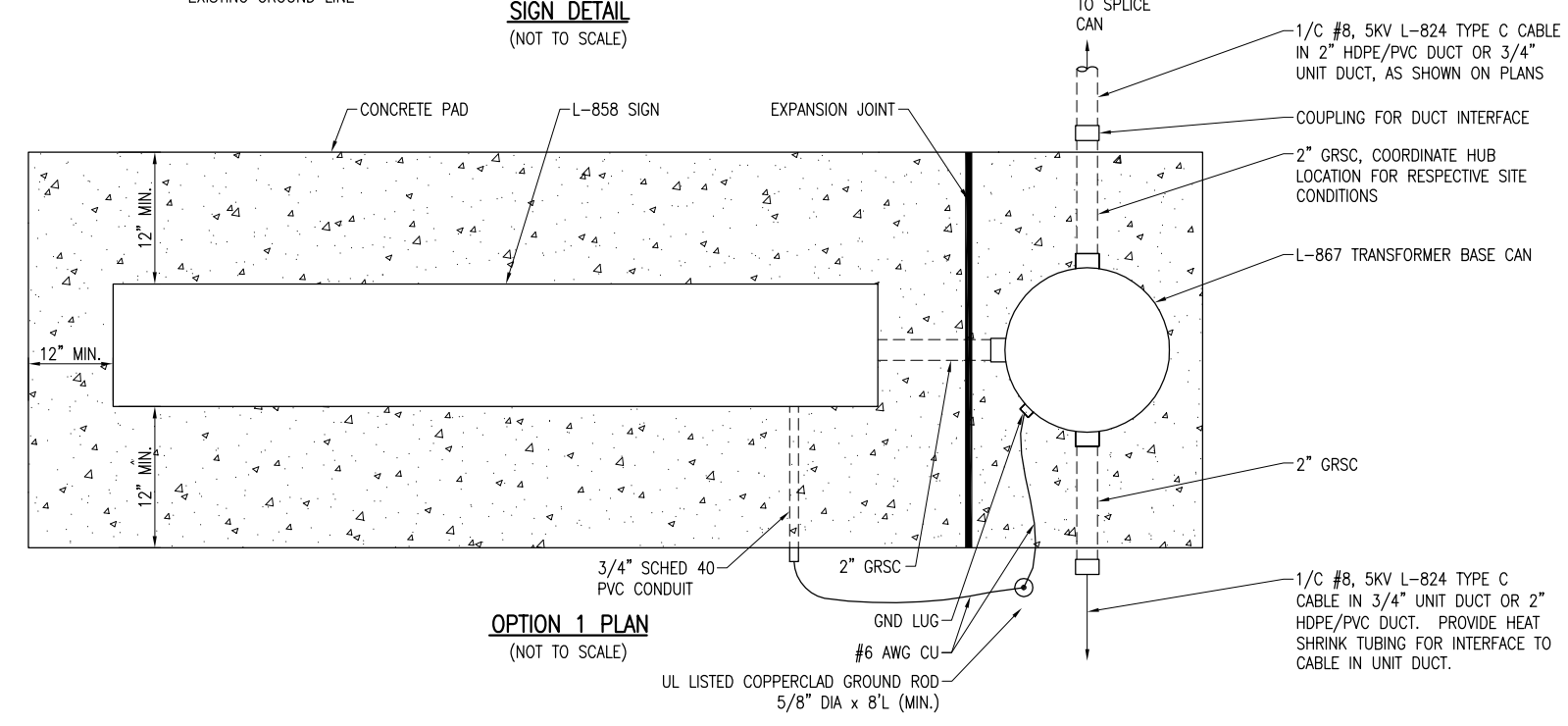
PER FAA AC 150/5340-30G DESIGN AND INSTALLATION DETAILS FOR AIRPORT VISUAL AIDS, A LIGHT BASE GROUND MUST BE INSTALLED AT EACH LIGHT FIXTURE. A LIGHT BASE GROUND SHALL BE INSTALLED AT EACH STAKE MOUNTED LIGHT AND EACH TRANSFORMER BASE/LIGHT CAN ASSOCIATED WITH RUNWAY LIGHTS, TAXIWAY LIGHTS, AND LIGHTED TAXI GUIDANCE SIGNS. THE LIGHT BASE GROUND SHALL BE A #6 AWG BARE COPPER CONDUCTOR CONNECTED TO THE GROUND LUG ON THE RESPECTIVE L-867 TRANSFORMER BASE/LIGHT CAN, TAXI SIGN FRAME, OR MOUNTING STAKE AND A 3/8-INCH DIAMETER BY 8-FOOT LONG (MINIMUM) UL LISTED COPPER CLAD GROUND ROD. ALSO BOND THE SIGN FRAME TO THE GROUND ROD WITH A #6 AWG BARE COPPER CONDUCTOR.

GENERAL NOTES

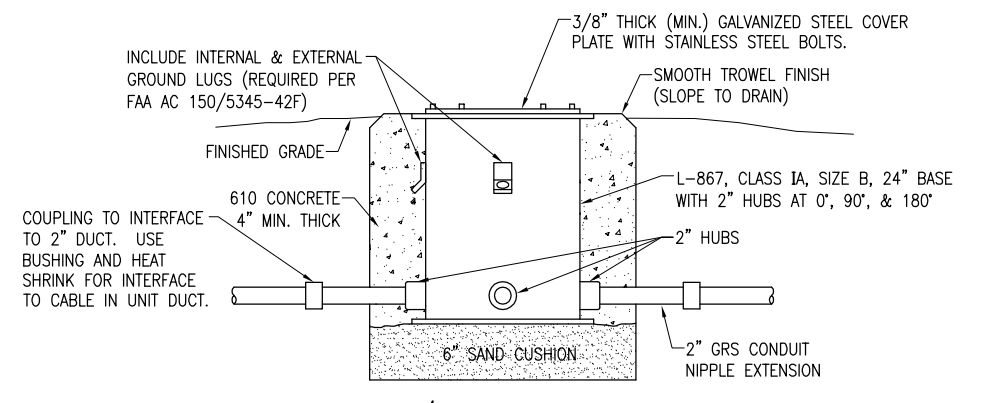
- SEE LIGHTING LAYOUT SHEET FOR SIGN LEGEND, LOCATION, TYPE, SIZE, STYLE, AND CLASS.
- SEE ELECTRICAL NOTES SHEETS.



DETAIL "A"
(NOT TO SCALE)



OPTION 1 PLAN
(NOT TO SCALE)



TRANSFORMER BASE/SPLICE CAN DETAIL FOR TAXI SIGN
(NOT TO SCALE)

NOTE:
FOR THE PURPOSE OF ENHANCING SAFETY, EACH BASE MUST HAVE INSTALLED, BY THE MANUFACTURER, AN INTERNAL AND EXTERNAL GROUND STRAP THAT IS AVAILABLE FOR THE PURPOSE OF ATTACHING A GROUND LUG THAT IS CONNECTED TO AN EARTH GROUND OR A SAFETY GROUND CONDUCTOR INSTALLED WITH THE RESPECTIVE CIRCUIT. FOR AIRPORT PROJECTS RECEIVING FEDERAL FUNDS THIS REQUIREMENT IS MANDATORY PER FAA AC 150/5345-42F.

REVISION	DATE

**OLNEY-NOBLE AIRPORT
OLNEY, ILLINOIS**

IL PROJ.: OLY-4254 BLOCK GRANT: 3-17-0076-B13

Hanson Proj. No. 12A0054	FILENAME E-503-DETL.dwg	Scale NOT TO SCALE	Date 12/14/2012
LAYOUT	KNL	11/20/12	
DRAWN	BAK	11/20/12	
REVIEWED	KNL	12/05/12	

HANSON
Professional Services Inc. 2013
1525 South Sixth Street
Springfield, Illinois 62703-2986
Ph: (217) 788-2450 Fax: (217) 788-2503
www.hanson-inc.com
Offices Nationwide

**REPLACE MRL ON
RUNWAY 11-29**

**ELECTRICAL DETAILS
SHEET 3**

APR 10, 2013 3:00 PM KINC00394
pw:\sps-sv306\hanson\Projects\Documents\12\olob\12A0054\12A0054D\CAD\Airport\Sheet\E-503-DETL

