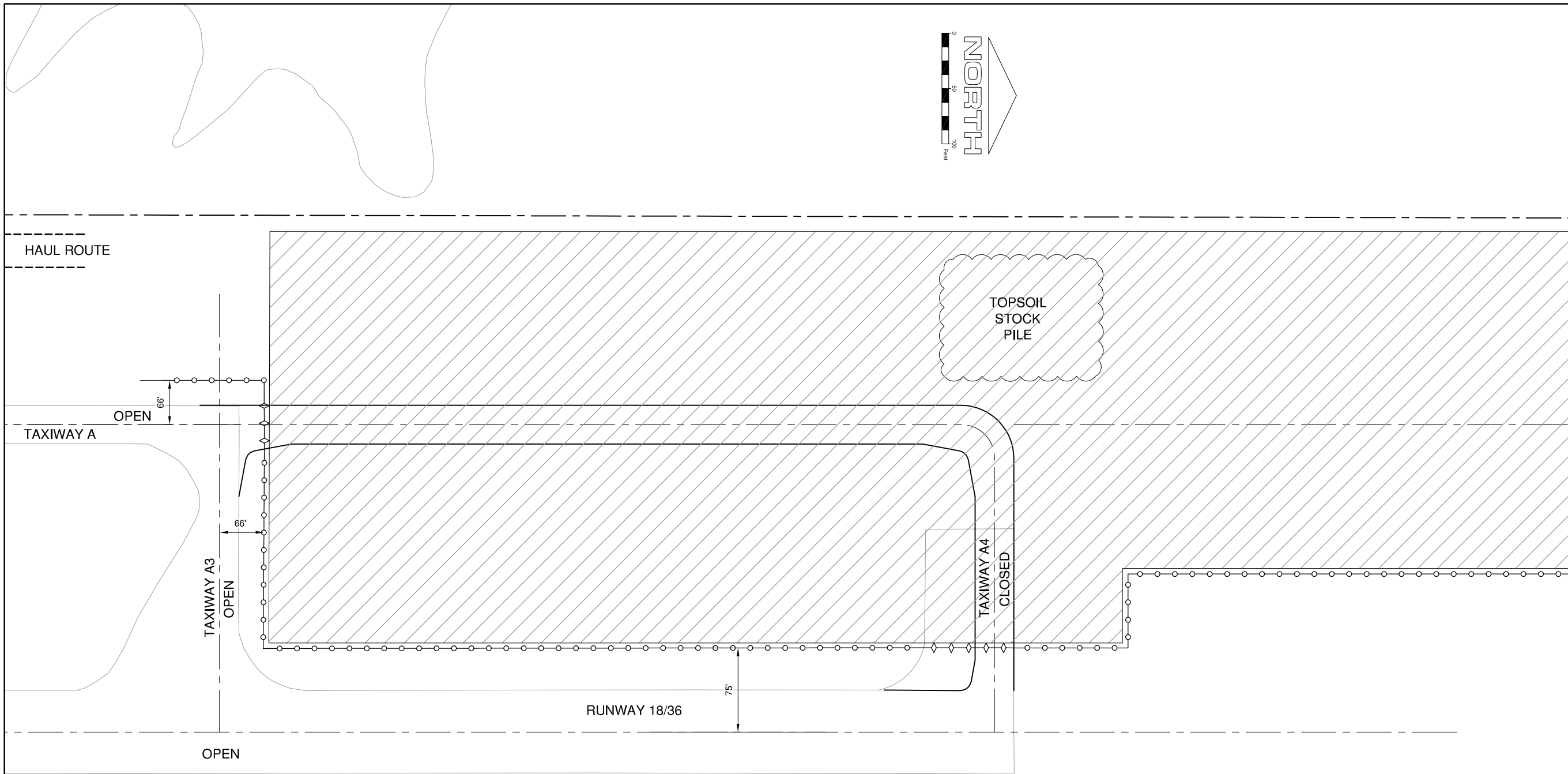
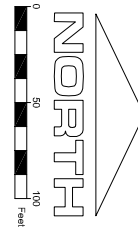


**SP023**

REVISIONS		
NUMBER	BY	DATE

0 1 2  
 THIS BAR IS EQUAL TO 2"  
 AT FULL SCALE (34X22).



**SPARTA COMMUNITY AIRPORT  
 HUNTER FIELD  
 SPARTA, ILLINOIS**

**TAXIWAY EXTENSION  
 CONSTRUCTION ACTIVITY PLAN 1**

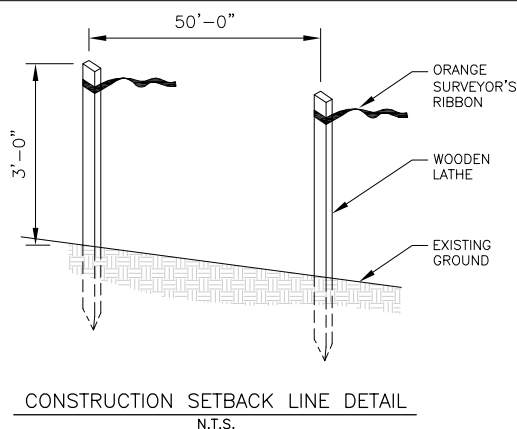
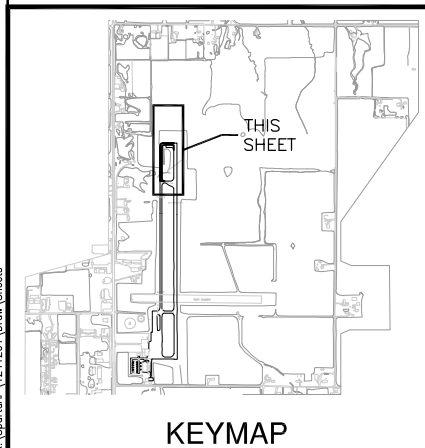
© Copyright CMT, Inc.  
**CMT**  
 CRAWFORD, MURPHY & TILLY, INC.  
 CONSULTING ENGINEERS  
 License No. 184-000613



DESIGN BY: CBG  
 DRAWN BY: CMT  
 CHECKED BY: CET  
 APPROVED BY: CET  
 DATE: MARCH 1, 2013  
 JOB No: 1241201

IL. PROJ. NO. SAR-4224  
 SBG NO. 3-17-0094-B11

SHEET 04 OF 28 SHEETS



**PHASE 1 NOTES:**

1. CONTRACTOR SHALL ACCESS SITE FROM HAUL ROUTE SHOWN .
2. CONTRACTOR SHALL PLACE BARRICADES & SET BACK LINE PRIOR TO BEGINNING WORK IN THIS PHASE.
3. WORK IN THIS PHASE SHALL CONSIST OF EMBANKMENT EXCAVATION, PAVEMENT CONSTRUCTION, DRAINAGE IMPROVEMENTS, TURFING & ELECTRICAL IMPROVEMENTS.

**LEGEND**

- WORK AREA
- CONTRACTOR'S ACCESS
- CONTRACTOR'S HAUL ROUTE
- PROPERTY LINE
- CONSTRUCTION SET BACK STAKES
- BARRICADES

K:\Sparta\1241201\Draw\Sheets