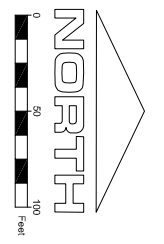


**LEGEND**

- NEW STAKE MOUNTED TAXIWAY LIGHT
- ◻ NEW BASE MOUNTED TAXIWAY LIGHT
- ▲ NEW REIL LOCATION
- ▬ NEW TAXIWAY GUIDANCE SIGN
- NEW TAXIWAY CIRCUIT
- EXISTING TAXIWAY CIRCUIT
- NEW RUNWAY CIRCUIT
- EXISTING RUNWAY CIRCUIT
- P EXISTING PAPI POWER CABLE
- ▬ NEW DUCT BANK



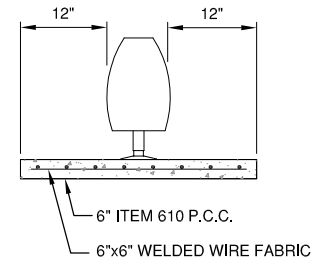
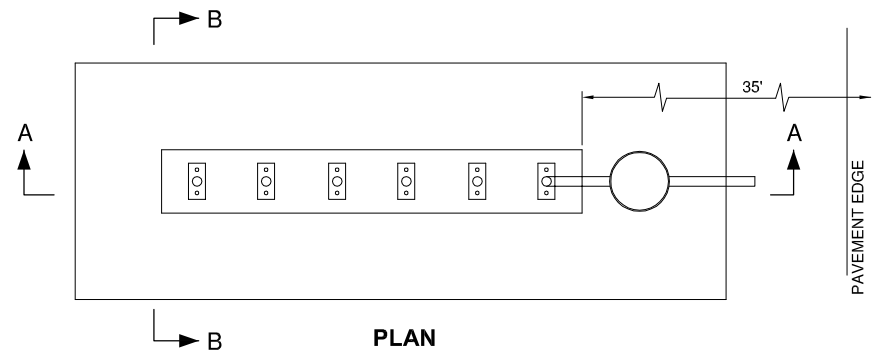
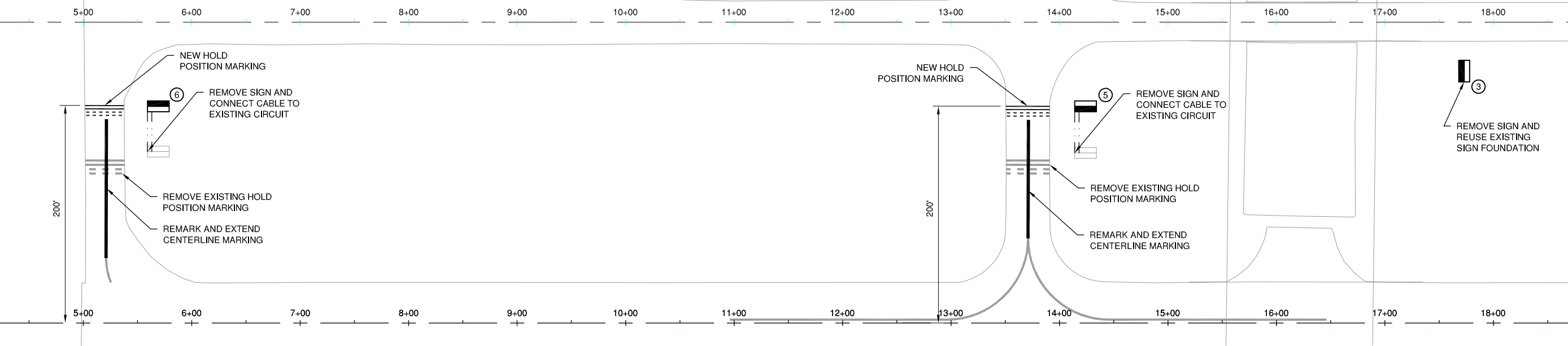
FILE: SAR4224-ES102.dwg  
 UPDATE BY: Chris Groth  
 PLOT DATE: 4/26/2013 2:21 PM

SAR-V-ALAE  
 SAR-C-SPAL  
 SAR-V-AL  
 SAR-E-AL  
 KEYMAP  
 SAR-C-MP

**SP023**

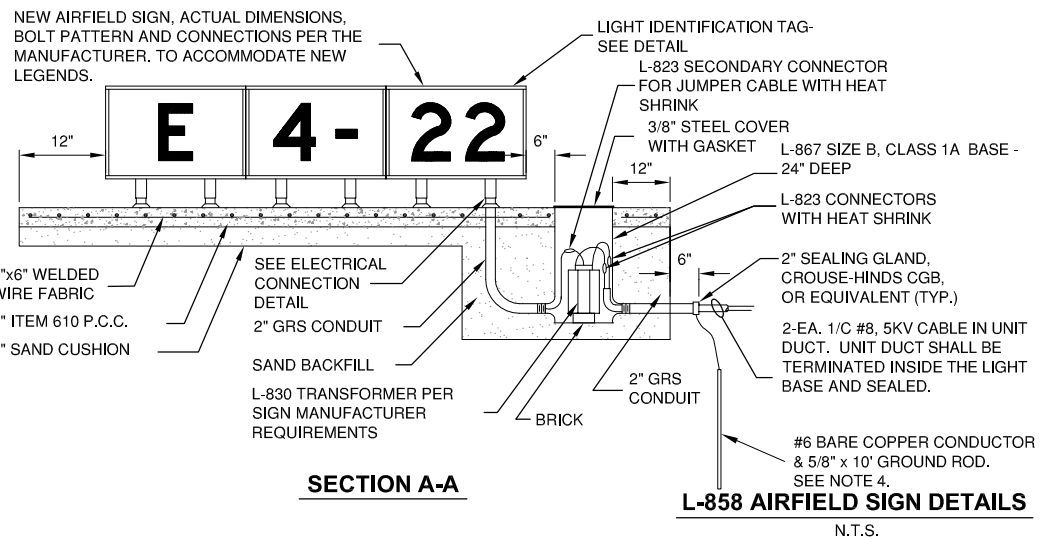
REVISIONS		
NUMBER	BY	DATE

0 1 2  
 THIS BAR IS EQUAL TO 2"  
 AT FULL SCALE (34X22).

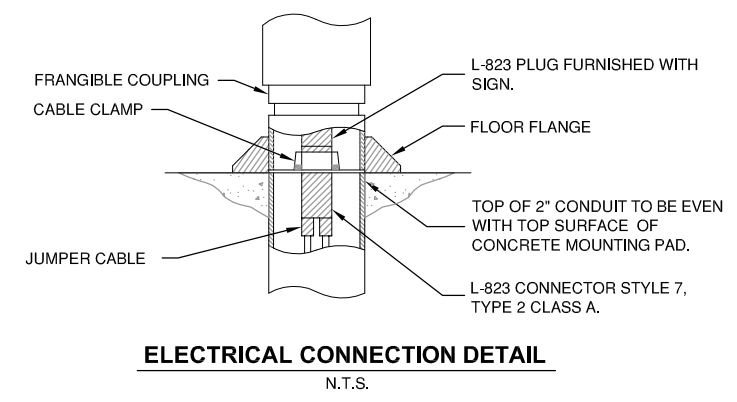


**AIRFIELD SIGN NOTES**

1. TRANSFORMER WATTAGE SHALL BE AS REQUIRED BY SIGN MANUFACTURER.
2. SIGN LEGEND SHALL BE AS SHOWN IN THE PLANS.
3. SIGNS SHALL BE SIZE 1, STYLE 2 OR 3, CLASS 2.
4. SEE "NEW BASE MOUNTED EDGE LIGHT" DETAIL FOR GROUNDING DETAILS.



**SECTION B-B**



SPARTA COMMUNITY AIRPORT  
 HUNTER FIELD  
 SPARTA, ILLINOIS

TAXIWAY EXTENSION  
 ELECTRICAL LAYOUT AND LIGHTING PLAN 2

© Copyright CMT, Inc.  
**CMT**  
 CRAWFORD, MURPHY & TILLY, INC.  
 CONSULTING ENGINEERS  
 License No. 184-000613

DESIGN BY:	CBG
DRAWN BY:	CMT
CHECKED BY:	CET
APPROVED BY:	CET
DATE:	MARCH 1, 2013
JOB No:	1241201
IL PROJ. NO.	SAR-4224
SBG NO.	3-17-0094-B11
SHEET	13 OF 28 SHEETS

K:\Sparta\1241201\Drawn\Sheets