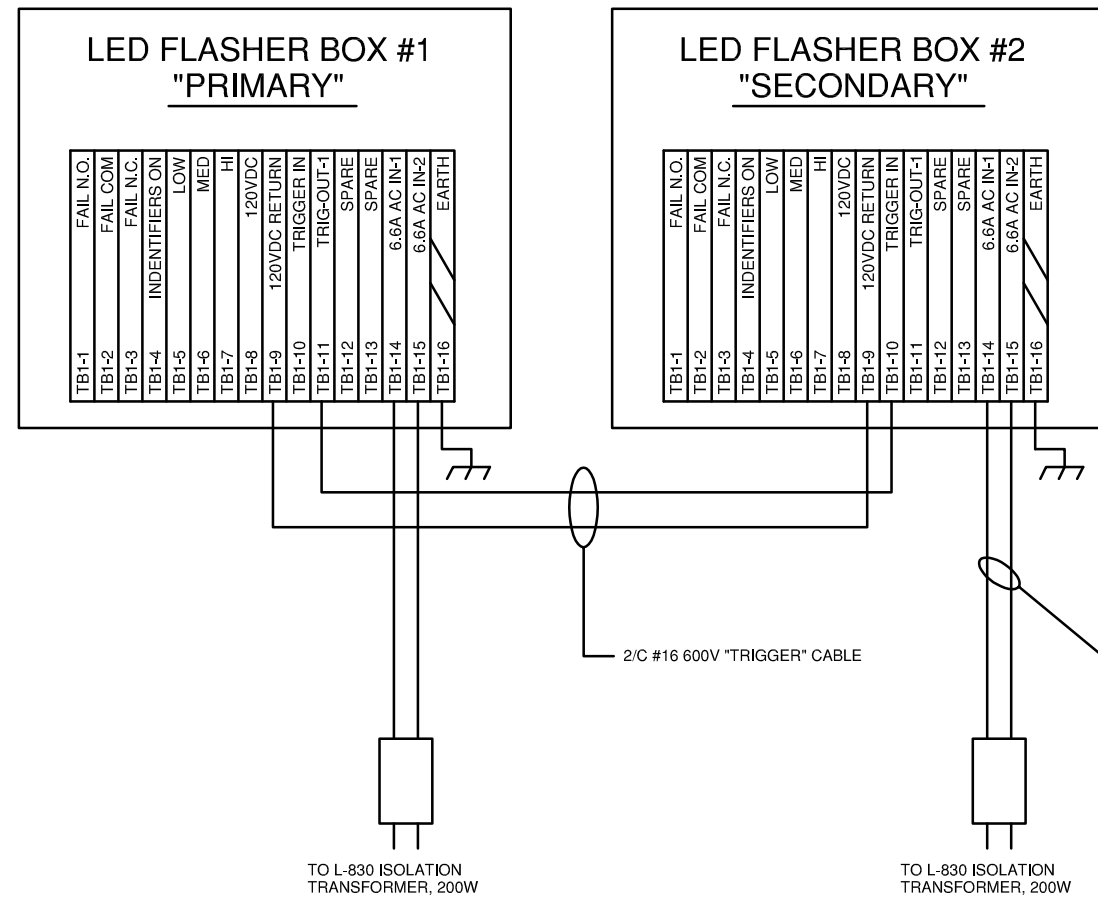
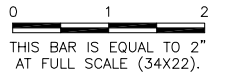
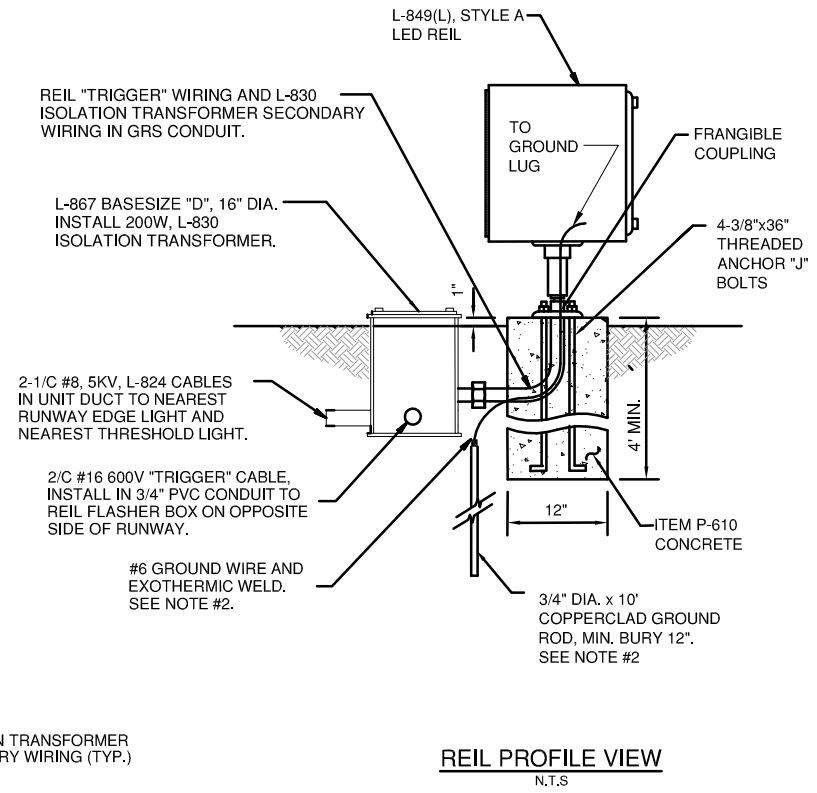


**SP023**

REVISIONS		
NUMBER	BY	DATE



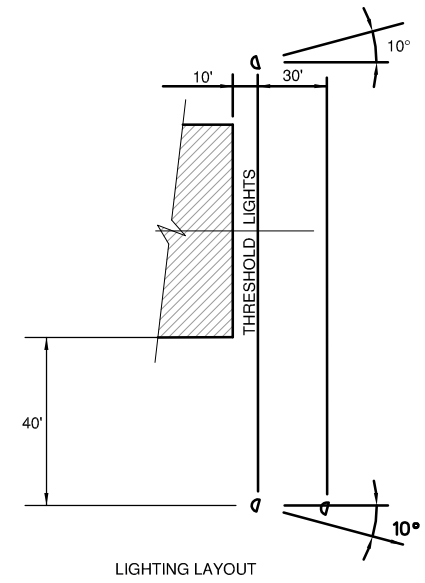
**REIL EXTERNAL WIRING DIAGRAM**  
 N.T.S.



**REIL PROFILE VIEW**  
 N.T.S.

**REIL PLAN VIEW**  
 N.T.S.

- NOTES:**
- LOCATE LIGHTS 40' AHEAD OF RUNWAY THRESHOLD
  - LIGHTS ARE ELEVATED 3° ABOVE HORIZONTAL.



**LIGHTING LAYOUT**

**REIL WIRING NOTES**

- REIL WIRING SHOWN IS BASED ON ONE MANUFACTURER. REQUIRED REIL WIRING FROM ANOTHER REIL MANUFACTURER MAY VARY FROM WIRING SHOWN. CONTRACTOR SHALL OBTAIN REIL WIRING DIAGRAM FROM MANUFACTURER OF REIL TO BE INSTALLED AND VERIFY REIL WIRING PRIOR TO INSTALLATION OF WIRING. INCLUDE WIRING DIAGRAM WITH REIL SUBMITTAL.
- INSTALL A GROUND RING AROUND EACH REIL LIGHT BOX INSTALLATION, USING #6 BARE COPPER GROUND WIRE ATTACHED TO A MINIMUM OF TWO GROUND RODS, INCLUDING GROUND ROD SHOWN.

**REIL DETAILS**  
 N.T.S.

**SPARTA COMMUNITY AIRPORT  
 HUNTER FIELD  
 SPARTA, ILLINOIS**

**TAXIWAY EXTENSION  
 ELECTRICAL DETAILS 3**

© Copyright CMT, Inc.  
**CMT**  
 CRAWFORD, MURPHY & TILLY, INC.  
 CONSULTING ENGINEERS  
 License No. 184-000613

DESIGN BY:	CBG
DRAWN BY:	CMT
CHECKED BY:	CET
APPROVED BY:	CET
DATE:	MARCH 1, 2013
JOB No:	1241201
IL PROJ. NO.	SAR-4224
SBG NO.	3-17-0094-B11
SHEET	16 OF 28 SHEETS