

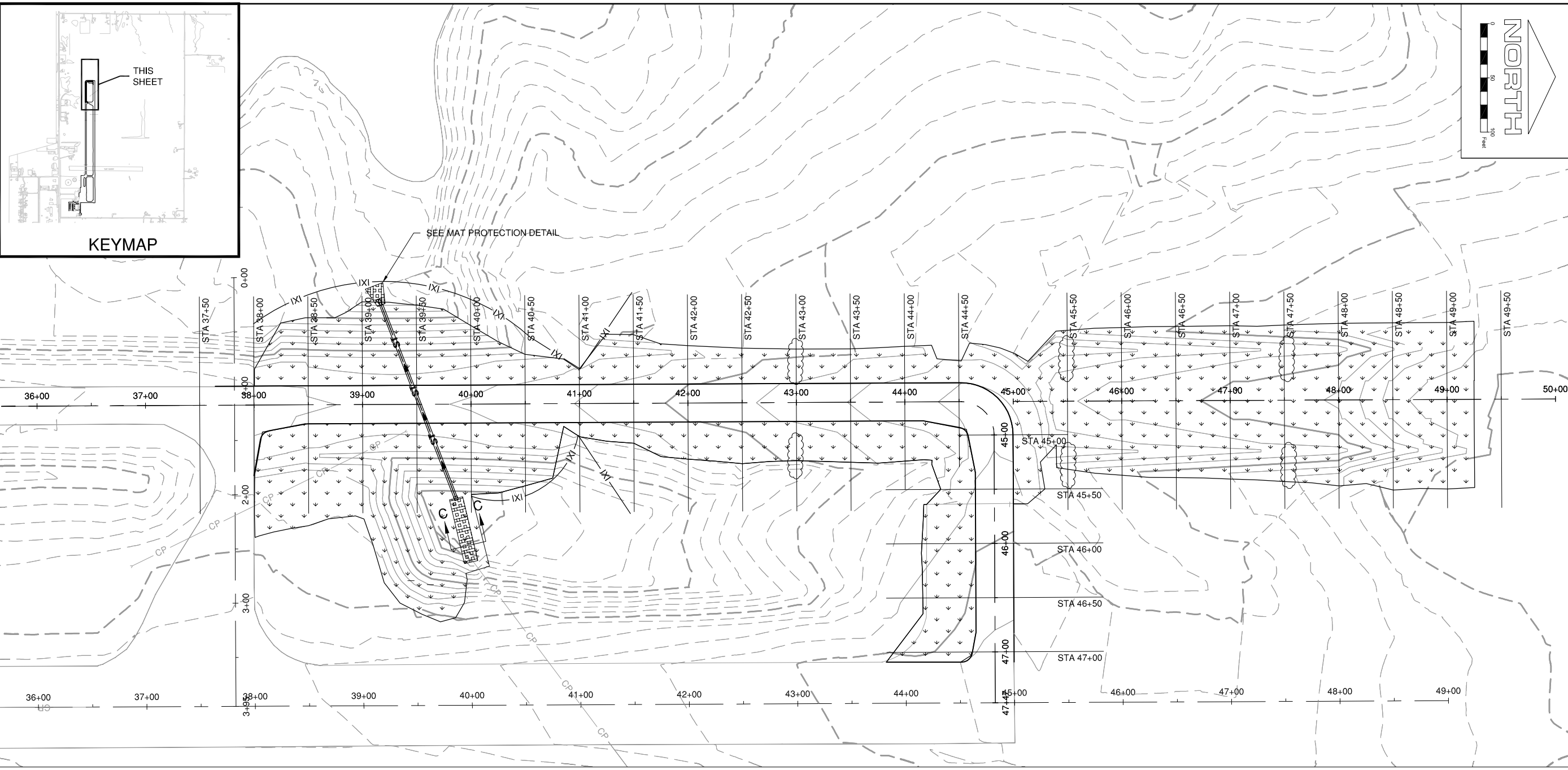
FILE: SAR4224-CG101.dwg
 UPDATE BY: Chris Groth
 PLOT DATE: 4/26/2013 2:23 PM

SAR-V-LAER
 SAR-C-SPAL
 SAR-V-AL
 KEYMAP
 SAR-CP701

SP023

| REVISIONS | | |
|-----------|----|------|
| NUMBER | BY | DATE |
| | | |
| | | |
| | | |

0 1 2
 THIS BAR IS EQUAL TO 2"
 AT FULL SCALE (34X22).



**SPARTA COMMUNITY AIRPORT
 HUNTER FIELD
 SPARTA, ILLINOIS**

**TAXIWAY EXTENSION
 EROSION CONTROL AND INDEX TO
 CROSS SECTIONS**

- NOTES**
- 1000 SY OF EXCELSIOR BLANKET (AR908520) HAS BEEN ADDED FOR USE AT LOCATIONS DETERMINED BY THE RESIDENT ENGINEER.

LEGEND

| | |
|---------|-------------------------|
| — IXI — | SILT FENCE |
| | TIED CONCRETE BLOCK MAT |
| | STRAW WATTLE |
| | SEEDING AND MULCH |

© Copyright CMT, Inc.

CMT
 CRAWFORD, MURPHY & TILLY, INC.
 CONSULTING ENGINEERS
 License No. 184-000613

| | |
|-------------------------------------------------|-----------------|
| DESIGN BY: | CBG |
| DRAWN BY: | CMT |
| CHECKED BY: | CET |
| APPROVED BY: | CET |
| DATE: | MARCH 1, 2013 |
| JOB No: | 1241201 |
| IL. PROJ. NO. SAR-4224 SBG NO. 3-17-0094-B11 | |
| SHEET | 20 OF 28 SHEETS |

K:\Sparta\1241201\Draw\Sheets