

**SP023**

REVISIONS		
NUMBER	BY	DATE

0 1 2  
 THIS BAR IS EQUAL TO 2"  
 AT FULL SCALE (34X22).

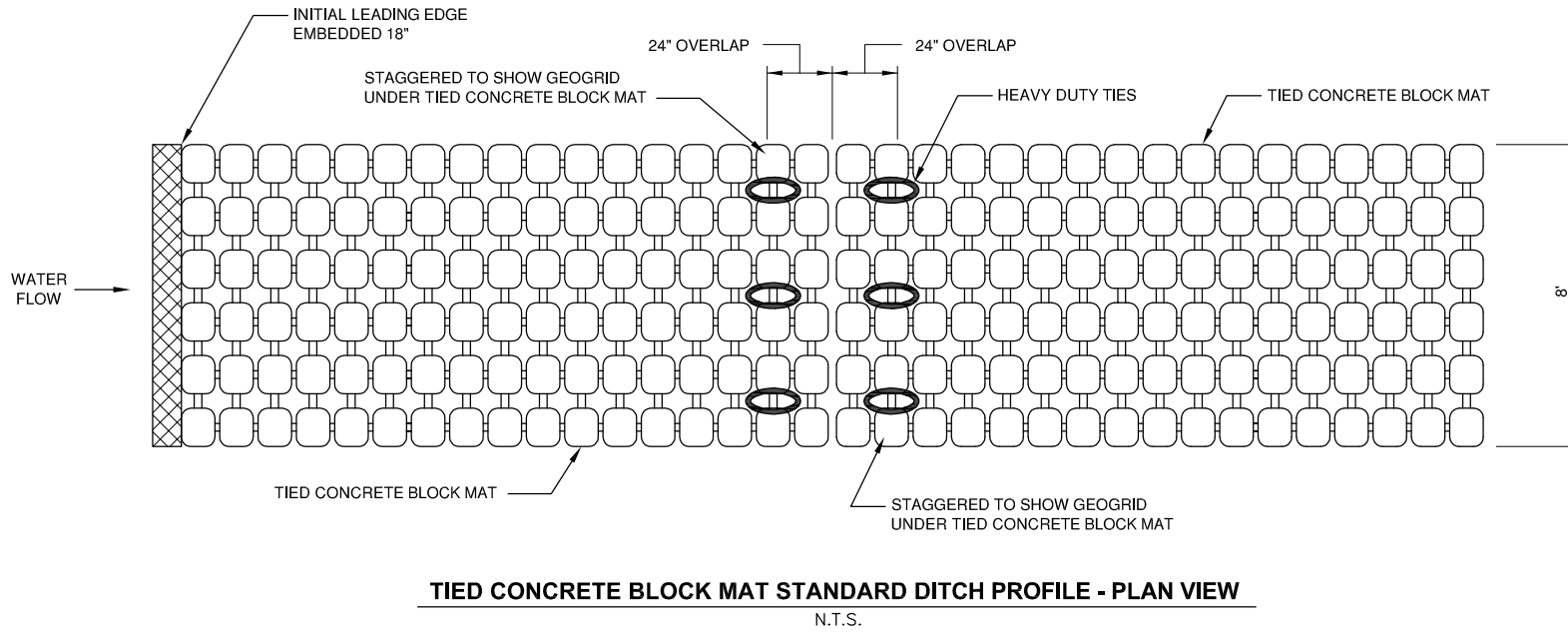
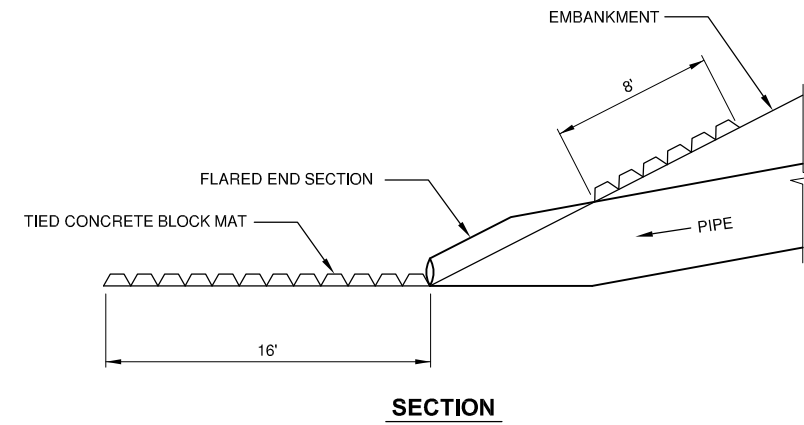
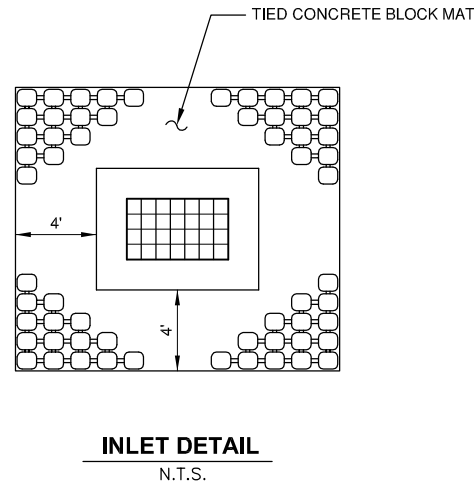
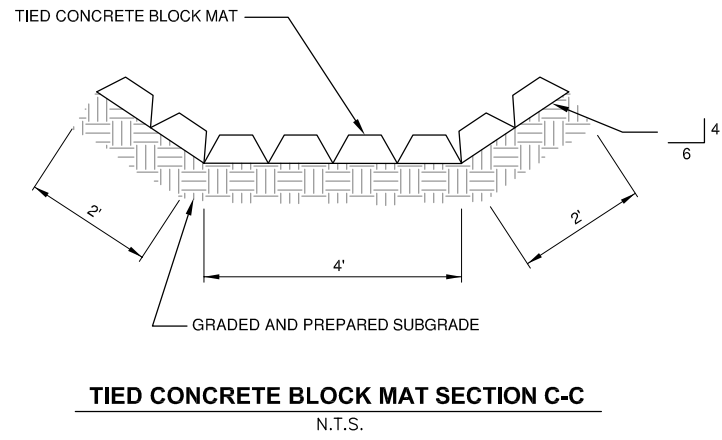
SPARTA COMMUNITY AIRPORT  
 HUNTER FIELD  
 SPARTA, ILLINOIS

TAXIWAY EXTENSION  
 EROSION CONTROL DETAILS 2

© Copyright CMT, Inc.



DESIGN BY:	CBG
DRAWN BY:	CMT
CHECKED BY:	CET
APPROVED BY:	CET
DATE:	MARCH 1, 2013
JOB No:	1241201
IL. PROJ. NO. SAR-4224 SBG NO. 3-17-0094-B11	
SHEET 22	OF 28 SHEETS



**NOTES**

1. GRADE A RADIAL CHANNEL SO THAT WATER WILL FLOW DOWN THE CENTER OF THE CHANNEL AND BE CONTAINED TO THE CHANNEL. ALL SUBGRADE SURFACES PREPARED FOR PLACEMENT OF MATS SHALL BE SMOOTH AND FREE OF ALL ROCKS, STICKS, ROOTS, OTHER PROTRUSIONS, OR DEBRIS OF ANY KIND. THE PREPARED SURFACE SHALL PROVIDE A FIRM UNYIELDING FOUNDATION FOR THE MATS WITH NO SHARP OR ABRUPT BREAKS IN THE GRADE.
2. APPLY SEED DIRECTLY TO THE PREPARED SOIL PRIOR TO TIED CONCRETE BLOCK MAT INSTALLATION. USE SEED PER ITEM 901.
3. INSTALL TIED CONCRETE BLOCK MAT ROLLS. SECTIONS OF MAT WITH SEAMS PERPENDICULAR TO THE WATER FLOW ARE CONNECTED VIA A GEOGRID SEAM. LONGITUDINAL JOINTS DO NOT REQUIRE CONNECTING. THE SEAMS CONSIST OF A 4' SECTION OF HIGH STRENGTH GEOGRID THE WIDTH OF THE CHANNEL. 24" OF THE SEAM GOES UNDERNEATH THE UPSTREAM SECTION OF MAT, 24" LAYS UNDER THE DOWNSTREAM SECTION OF MAT. THE SEAM IS THEN TIED TO THE UPSTREAM OF MAT AND DOWNSTREAM SECTION OF MAT USING HEAVY DUTY TIES IN 1' INCREMENTS ACROSS THE SEAM. TIES CONSIST OF 1/4" ZIP TIES.
4. THE INITIAL LEADING EDGE OF TIED CONCRETE BLOCK MAT IS EMBEDDED 18" VERTICALLY INTO THE GROUND TO SERVE AS AN ANCHOR TRENCH.

