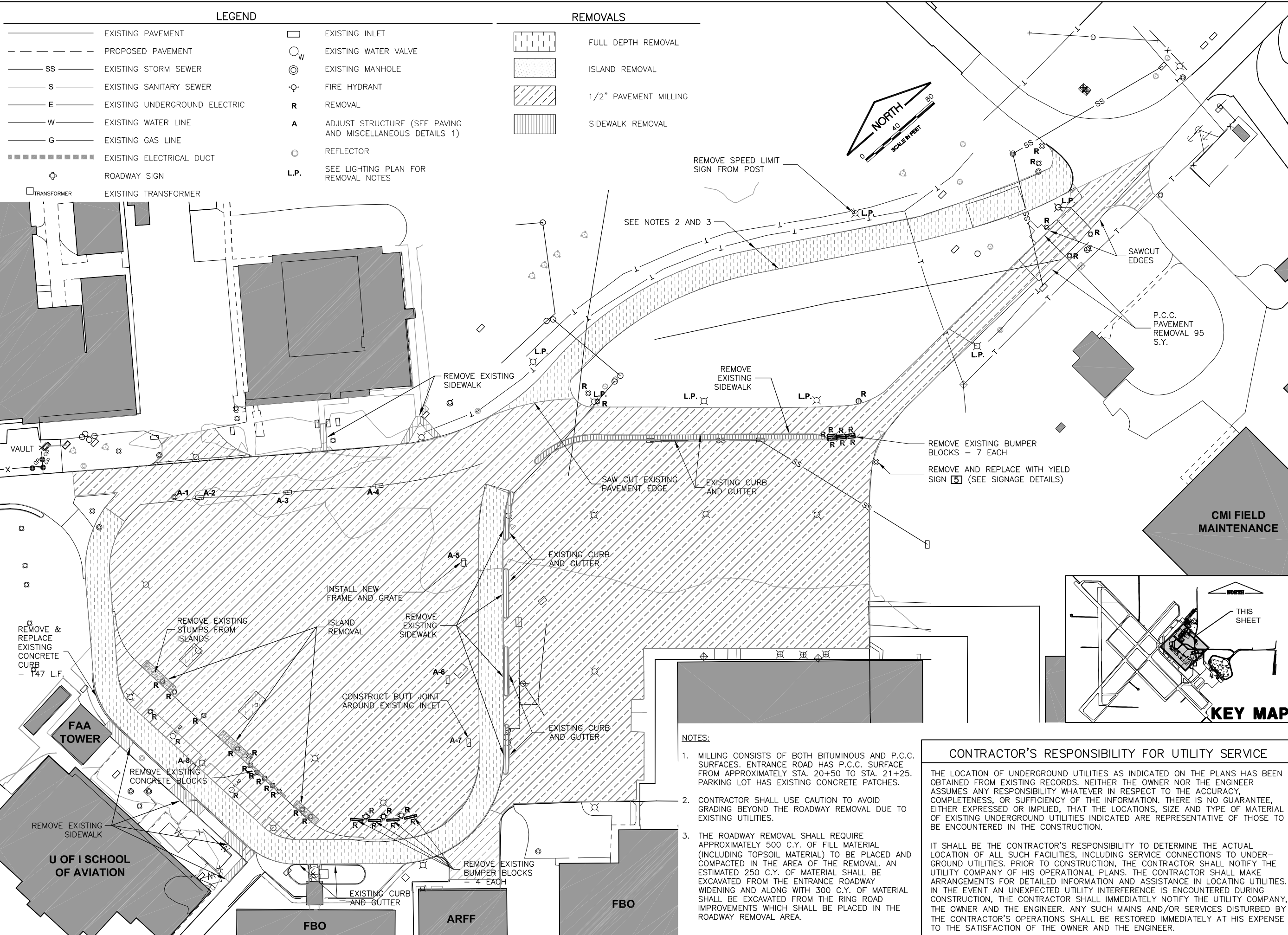


UN052

REVISIONS		
NUMBER	BY	DATE

0 1 2
THIS BAR IS EQUAL TO 2"
AT FULL SCALE (34X22).



**UNIVERSITY OF ILLINOIS
WILLARD AIRPORT
SAVOY, ILLINOIS**

**RELOCATE ENTRANCE ROADWAY &
REHABILITATE OLD TERMINAL PARKING LOT
EXISTING CONDITIONS &
REMOVALS**

© Copyright CMT, Inc.

CMT
CRAWFORD, MURPHY & TILLY, INC.
CONSULTING ENGINEERS
License No. 184-000613

KEY MAP

THIS SHEET

- NOTES:**
- MILLING CONSISTS OF BOTH BITUMINOUS AND P.C.C. SURFACES. ENTRANCE ROAD HAS P.C.C. SURFACE FROM APPROXIMATELY STA. 20+50 TO STA. 21+25. PARKING LOT HAS EXISTING CONCRETE PATCHES.
 - CONTRACTOR SHALL USE CAUTION TO AVOID GRADING BEYOND THE ROADWAY REMOVAL DUE TO EXISTING UTILITIES.
 - THE ROADWAY REMOVAL SHALL REQUIRE APPROXIMATELY 500 C.Y. OF FILL MATERIAL (INCLUDING TOPSOIL MATERIAL) TO BE PLACED AND COMPACTED IN THE AREA OF THE REMOVAL. AN ESTIMATED 250 C.Y. OF MATERIAL SHALL BE EXCAVATED FROM THE ENTRANCE ROADWAY WIDENING AND ALONG WITH 300 C.Y. OF MATERIAL SHALL BE EXCAVATED FROM THE RING ROAD IMPROVEMENTS WHICH SHALL BE PLACED IN THE ROADWAY REMOVAL AREA.

CONTRACTOR'S RESPONSIBILITY FOR UTILITY SERVICE

THE LOCATION OF UNDERGROUND UTILITIES AS INDICATED ON THE PLANS HAS BEEN OBTAINED FROM EXISTING RECORDS. NEITHER THE OWNER NOR THE ENGINEER ASSUMES ANY RESPONSIBILITY WHATEVER IN RESPECT TO THE ACCURACY, COMPLETENESS, OR SUFFICIENCY OF THE INFORMATION. THERE IS NO GUARANTEE, EITHER EXPRESSED OR IMPLIED, THAT THE LOCATIONS, SIZE AND TYPE OF MATERIAL OF EXISTING UNDERGROUND UTILITIES INDICATED ARE REPRESENTATIVE OF THOSE TO BE ENCOUNTERED IN THE CONSTRUCTION.

IT SHALL BE THE CONTRACTOR'S RESPONSIBILITY TO DETERMINE THE ACTUAL LOCATION OF ALL SUCH FACILITIES, INCLUDING SERVICE CONNECTIONS TO UNDERGROUND UTILITIES. PRIOR TO CONSTRUCTION, THE CONTRACTOR SHALL NOTIFY THE UTILITY COMPANY OF HIS OPERATIONAL PLANS. THE CONTRACTOR SHALL MAKE ARRANGEMENTS FOR DETAILED INFORMATION AND ASSISTANCE IN LOCATING UTILITIES. IN THE EVENT AN UNEXPECTED UTILITY INTERFERENCE IS ENCOUNTERED DURING CONSTRUCTION, THE CONTRACTOR SHALL IMMEDIATELY NOTIFY THE UTILITY COMPANY, THE OWNER AND THE ENGINEER. ANY SUCH MAINS AND/OR SERVICES DISTURBED BY THE CONTRACTOR'S OPERATIONS SHALL BE RESTORED IMMEDIATELY AT HIS EXPENSE TO THE SATISFACTION OF THE OWNER AND THE ENGINEER.

DESIGN BY:	CBG
DRAWN BY:	CMT
CHECKED BY:	KLB
APPROVED BY:	CET
DATE:	4/19/2013
JOB No:	11059-05-00
IL PROJ. NO.	CMI-4269
SHEET 13 OF 38 SHEETS	