

STATE OF ILLINOIS
DEPARTMENT OF TRANSPORTATION

F.A. RTE.	SECTION	COUNTY	TOTAL SHEETS	SHEET NO.
		ILLINOIS	14	1

*D7 GUARDRAIL END SECTIONS 2019
**EDWARDS, WABASH & WAYNE

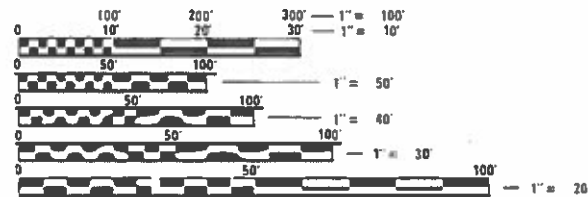
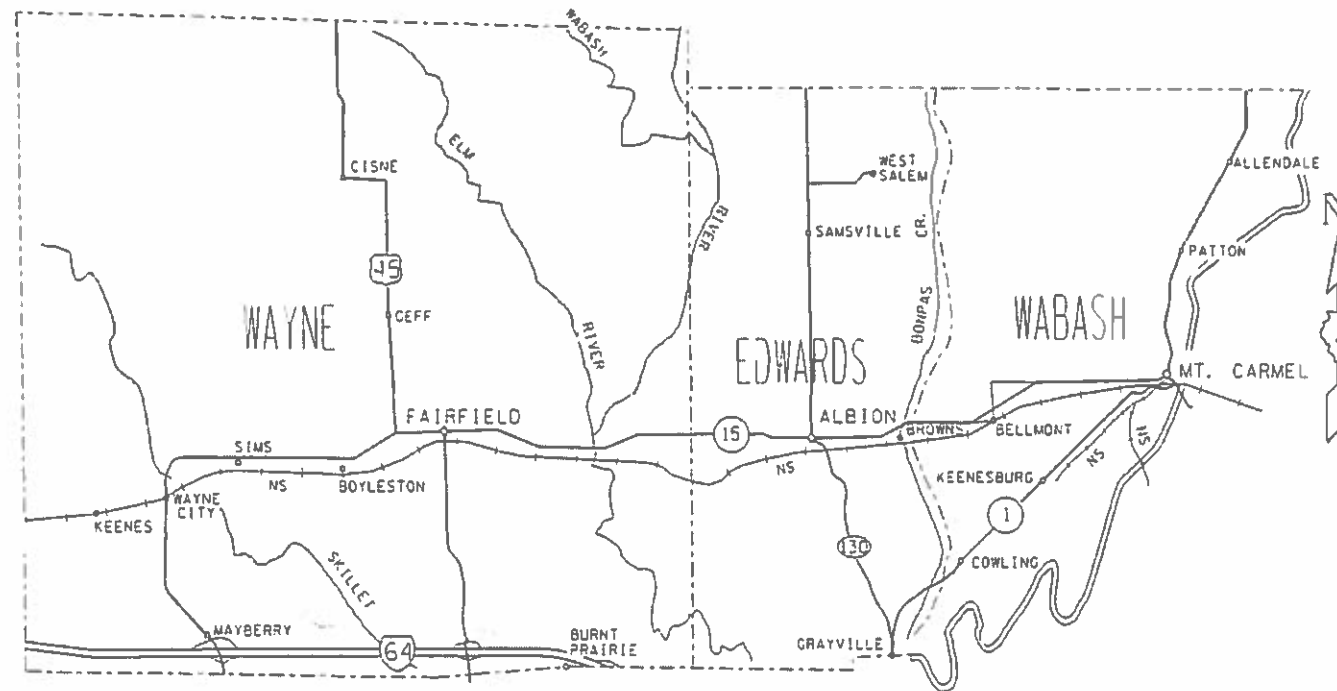
D-97-012-19

FOR INDEX OF SHEETS, SEE SHEET NO. 2

PROPOSED HIGHWAY PLANS

VARIOUS ROUTES
SECTION D7 GUARDRAIL END SECTIONS 2019-2
PROJECT HSIP-Q9KU(300)
VARIOUS COUNTIES (EDWARDS, WABASH & WAYNE)

C-97-023-19



FULL SIZE PLANS HAVE BEEN PREPARED USING STANDARD ENGINEERING SCALES. REDUCED SIZED PLANS WILL NOT CONFORM TO STANDARD SCALES. IN MAKING MEASUREMENTS ON REDUCED PLANS, THE ABOVE SCALES MAY BE USED.

J.U.L.I.E.
JOINT UTILITY LOCATION INFORMATION FOR EXCAVATION
1-800-892-0123
OR 811

PROJECT ENGINEER BRIAN LEWIS
PROJECT MANAGER

CONTRACT NO. 74895

STATE OF ILLINOIS
DEPARTMENT OF TRANSPORTATION

SUBMITTED March 28 2019
Jeffrey M. Smith
May 10 2019
ENGINEER OF DESIGN AND ENVIRONMENT

May 10 2019
DIRECTOR OF HIGHWAYS PROJECT IMPLEMENTATION

PRINTED BY THE AUTHORITY
OF THE STATE OF ILLINOIS

GENERAL NOTES

THIS PROJECT CONSISTS OF REMOVAL AND REPLACEMENT OF GUARDRAIL, PLACEMENT OF AGGREGATE, EXTENSION OF CULVERTS, ETC. ON VARIOUS ROUTES IN EDWARDS, WABASH AND WAYNE COUNTIES.

THE AGGREGATE QUANTITIES ARE ROUGH ESTIMATES. THE CONTRACTOR SHALL CONSULT THE RESIDENT ENGINEER FOR CLOSER ESTIMATES OF THE QUANTITIES REQUIRED AT EACH LOCATION. THE PURPOSE OF THE AGGREGATE IS TO FLATTEN THE SHOULDER SLOPE AS SHOWN ON STANDARD 630301 AND TO FILL AROUND PROPOSED CULVERT EXTENSIONS.

THE CONTRACTOR SHALL ENDEAVOR TO REPLACE IN THE SAME DAY ANY GUARDRAIL REMOVED ON THAT DAY.

LIGHTED BARRICADES SHALL BE PLACED AT ANY LOCATION AT WHICH GUARDRAIL HAS BEEN REMOVED AND NOT REPLACED ON THE SAME DAY AND/OR AT ANY LOCATION WHERE THE GUARDRAIL INSTALLATION IS NOT COMPLETE.

NO LANE CLOSURES WILL BE ALLOWED TO REMAIN OVERNIGHT.

LENGTHS OF GUARDRAIL TYPE A WERE CALCULATED ASSUMING A TYPE 1 TERMINAL LENGTH OF 50 FEET WITH 37.5 FEET CONTRIBUTING TO LENGTH OF NEED. IF THE CONTRACTOR ELECTS TO PROVIDE A TYPE 1 TERMINAL SHORTER THAN THIS THE CONTRACTOR SHALL PROVIDE AND ERECT AT NO COST TO THE DEPARTMENT TYPE A RAIL SUFFICIENT TO MAKE UP THE DIFFERENCE.

COVER ON PROPOSED PRECAST BOX CULVERTS IS ONE FOOT OR LESS. COVER ON PROPOSED PRECAST PIPE CULVERTS IS BETWEEN TWO AND THREE FEET.

1	COVER SHEET
2	INDEX OF SHEETS AND GENERAL NOTES
3-4	SUMMARY OF QUANTITIES
5	EDWARDS COUNTY MAP
6	EDWARDS COUNTY QUANTITIES
7	WABASH COUNTY MAP
8	WABASH COUNTY QUANTITIES
9	WAYNE COUNTY MAP
10-12	WAYNE COUNTY QUANTITIES
13-14	CULVERT EXTENSION DETAILS

THE FOLLOWING STANDARDS ARE A PART OF THESE PLANS AND ARE INCLUDED FOLLOWING THE LAST NUMBERED SHEET OF THE PLANS.

- 542301-03 PRECAST REINFORCED CONCRETE FLARED END SECTION
- 630001-12 STEEL PLATE BEAM GUARDRAIL
- 630106-02 LONG-SPAN GUARDRAIL OVER CULVERT
- 630111 WEAK POST GUARDRAIL ATTACHED TO CULVERT
- 630301-09 SHOULDER WIDENING FOR TYPE 1 GUARDRAIL TERMINALS
- 631011-10 TRAFFIC BARRIER TERMINAL, TYPE 2
- 631031-15 TRAFFIC BARRIER TERMINAL, TYPE 6
- 631032-09 TRAFFIC BARRIER TERMINAL, TYPE 6A
- 631033-07 TRAFFIC BARRIER TERMINAL, TYPE 6B
- 701001-02 OFF-ROAD OPERATIONS, 2L, 2W, MORE THAN 15' AWAY
- 701006-05 OFF-ROAD OPERATIONS, 2L, 2W, 15' TO 24" FROM PAVEMENT EDGE
- 701011-04 OFF-ROAD MOVING OPERATIONS, 2L, 2W, DAY ONLY
- 701101-05 OFF-ROAD OPERATIONS, MULTILANE, 15' TO 24" FROM PAVEMENT EDGE
- 701106-02 OFF-ROAD OPERATIONS, MULTILANE, MORE THAN 15' AWAY
- 701201-05 LANE CLOSURE, 2L, 2W, DAY ONLY, FOR SPEEDS >= 45 MPH
- 701301-04 LANE CLOSURE, 2L, 2W, SHORT TIME OPERATIONS
- 701400-09 APPROACH TO LANE CLOSURE, FREEWAY/EXPRESSWAY
- 701406-12 LANE CLOSURE, FREEWAY/EXPRESSWAY, DAY OPERATIONS ONLY
- 701426-09 LANE CLOSURE, MULTILANE, INTERMITTENT OR MOVING OPERATIONS, FOR SPEEDS >= 45 MPH
- 701501-06 URBAN LANE CLOSURE, 2L 2W, UNDIVIDED
- 701601-09 URBAN LANE CLOSURE, MULTILANE, 1W OR 2W, WITH NONTRAVERSABLE MEDIAN
- 701901-08 TRAFFIC CONTROL DEVICES
- 725001-01 OBJECT AND TERMINAL MARKERS
- 782006 GUARDRAIL AND BARRIER WALL REFLECTOR MOUNTING DETAILS

REV. - MS

MODEL: Default
FILE: M:\MS - Planning\room.dat\illinois.gov\PIWDOT\Documents\DOT_Offices\District_7\Projects\74895\CADD\data\CAD\sheets\D74895-shc-genote.dgn

USER NAME = steffenmk	DESIGNED -	REVISED -	STATE OF ILLINOIS DEPARTMENT OF TRANSPORTATION	GENERAL NOTES INDEX OF SHEETS			F.A. RTE.	SECTION	COUNTY	TOTAL SHEETS	SHEET NO.
DRAWN -	REVISED -						*		14	2	
PLOT SCALE = 100.0000' / in.	CHECKED -	REVISED -					CONTRACT NO. 74895				
PLOT DATE = 3/29/2019	DATE -	REVISED -		SCALE:	SHEET	OF	SHEETS	STA.	TO	STA.	ILLINOIS FED. AID PROJECT

* D7 GUARDRAIL END SECTIONS 2019-2

EDWARDS, WABASH, WAYNE

90% FED
10% STATE
VARIOUS COUNTIES

90% FED
10% STATE
VARIOUS COUNTIES

SUMMARY OF QUANTITIES			TOTAL QUANTITIES	CONSTRUCTION TYPE CODE		
CODE NO	ITEM	UNIT		EDWARDS 0021	WABASH 0021	WAYNE 0021
50800105	REINFORCEMENT BARS	POUND	522			522
54001006	BOX CULVERT END SECTIONS, CULVERT NO. 6	EACH	2			2
54001007	BOX CULVERT END SECTIONS, CULVERT NO. 7	EACH	2			2
54002020	EXPANSION BOLTS 3/4 INCH	EACH	88			88
54010303	PRECAST CONCRETE BOX CULVERTS 3' X 3'	FOOT	22			22
54010404	PRECAST CONCRETE BOX CULVERTS 4' X 4'	FOOT	22			22
54213675	PRECAST REINFORCED CONCRETE FLARED END SECTIONS 30"	EACH	4			4
54248510	CONCRETE COLLAR	CU YD	13.4			13.4
542A0235	PIPE CULVERTS, CLASS A, TYPE 1 30"	FOOT	22			22
63000001	STEEL PLATE BEAM GUARDRAIL, TYPE A, 6 FOOT POSTS	FOOT	3225	525	100	2600
63000003	STEEL PLATE BEAM GUARDRAIL, TYPE A, 9 FOOT POSTS	FOOT	2095		275	1820
63000009	STEEL PLATE BEAM GUARDRAIL, TYPE B, 9 FOOT POSTS	FOOT	100		100	

SUMMARY OF QUANTITIES			TOTAL QUANTITIES	CONSTRUCTION TYPE CODE		
CODE NO	ITEM	UNIT		EDWARDS 0021	WABASH 0021	WAYNE 0021
63000054	WEAK POST GUARDRAIL ATTACHED TO CULVERT CASE V	FOOT	344			344
63000055	WEAK POST GUARDRAIL ATTACHED TO CULVERT CASE VI	FOOT	107			107
63000370	LONG-SPAN GUARDRAIL OVER CULVERT, 25 FT SPAN	FOOT	88			88
63100045	TRAFFIC BARRIER TERMINAL, TYPE 2	EACH	1			1
63100085	TRAFFIC BARRIER TERMINAL, TYPE 6	EACH	26	3	2	21
63100167	TRAFFIC BARRIER TERMINAL, TYPE 1 (SPECIAL) TANGENT	EACH	70	9	10	51
63100169	TRAFFIC BARRIER TERMINAL, TYPE 1 (SPECIAL) FLARED	EACH	2	1		1
63200310	GUARDRAIL REMOVAL	FOOT	8689	1021	2146	5522
67100100	MOBILIZATION	L SUM	1	0.15	0.25	0.6
72501000	TERMINAL MARKER - DIRECT APPLIED	EACH	72	10	10	52
78200005	GUARDRAIL REFLECTORS, TYPE A	EACH	117	16	16	85
X4811900	AGGREGATE SHOULDERS (SPECIAL)	TON	289		9	280

MODEL: Default
 FILE: Model - Publications\room.dwg
 PLOT DATE: 3/29/2019
 PROJECT: 74895-CD-Data\CAD\Drawings\DOT - Office\Drawings\74895-CD-500.dgn

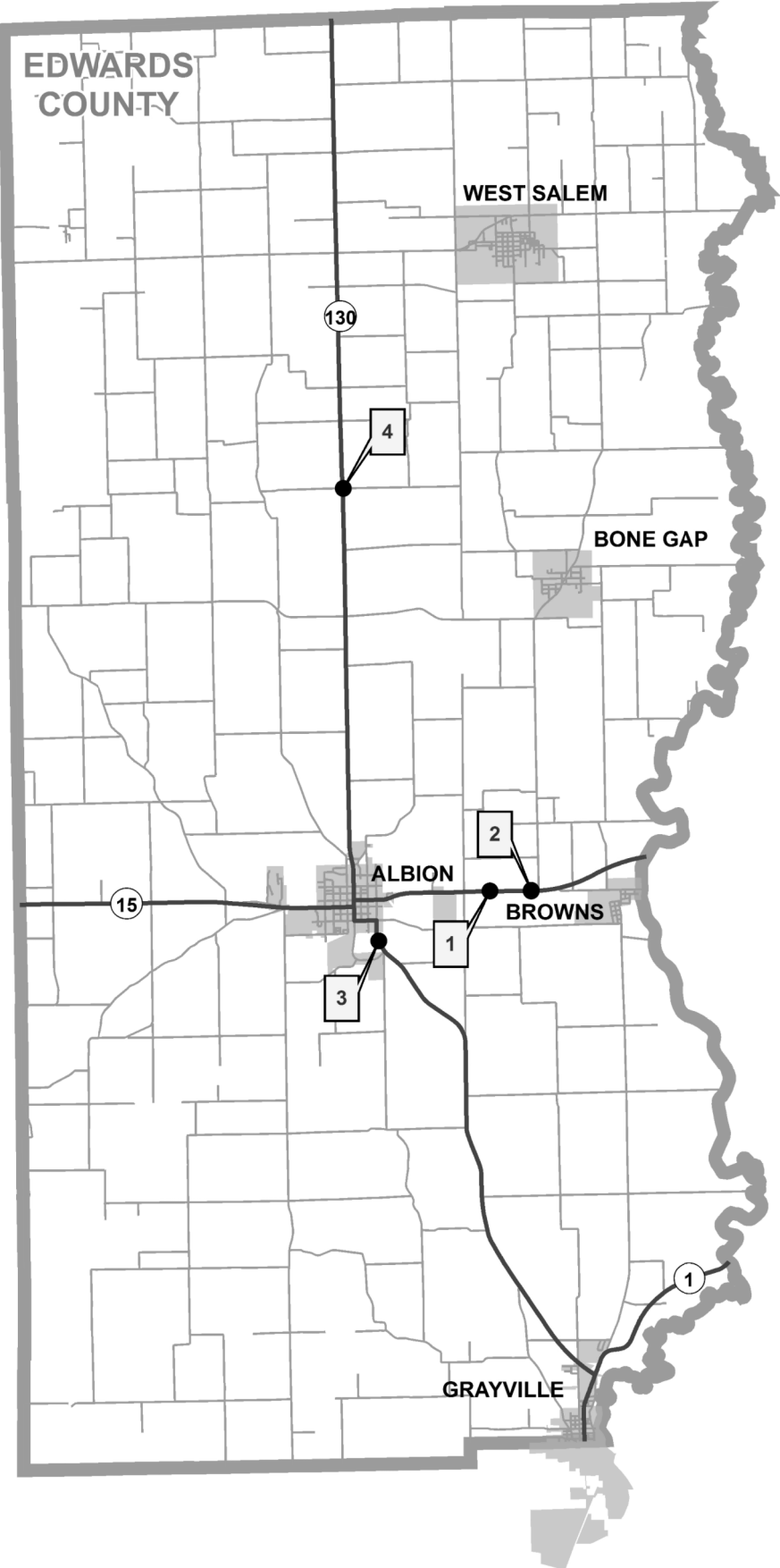
USER NAME = steffenmk	DESIGNED -	REVISED -
PLOT SCALE = 100.0000' / in.	DRAWN -	REVISED -
PLOT DATE = 3/29/2019	CHECKED -	REVISED -
	DATE -	REVISED -

**STATE OF ILLINOIS
DEPARTMENT OF TRANSPORTATION**

SUMMARY OF QUANTITIES

SCALE: SHEET 1 OF 2 SHEETS STA. TO STA.

F.A. RTE.	SECTION	COUNTY	TOTAL SHEETS	SHEET NO.
	*		14	3
			CONTRACT NO. 74895	



MODEL: Default
 FILE: \\nas101.pw.state.il.us\pub\rooms\dat\illinois\pwr\WIDOT\Documents\DOT_Offices\District_7\Projects\74895\CADD\Drawings\74895-shcdplan.dgn

* EDWARDS, WABASH, & WAYNE
 ** D7 GUARDRAIL END SECTIONS 2019-2

USER NAME = steffemk	DESIGNED -	REVISED -
	DRAWN -	REVISED -
PLOT SCALE = 100,0000' / in.	CHECKED -	REVISED -
PLOT DATE = 3/29/2019	DATE -	REVISED -

STATE OF ILLINOIS
DEPARTMENT OF TRANSPORTATION

EDWARDS COUNTY GUARDRAIL MAP

SCALE: SHEET OF SHEETS STA. TO STA.

F.A. RTE.	SECTION	COUNTY	TOTAL SHEETS	SHEET NO.
	**	*	14	5
CONTRACT NO. 74895				
ILLINOIS FED. AID PROJECT				

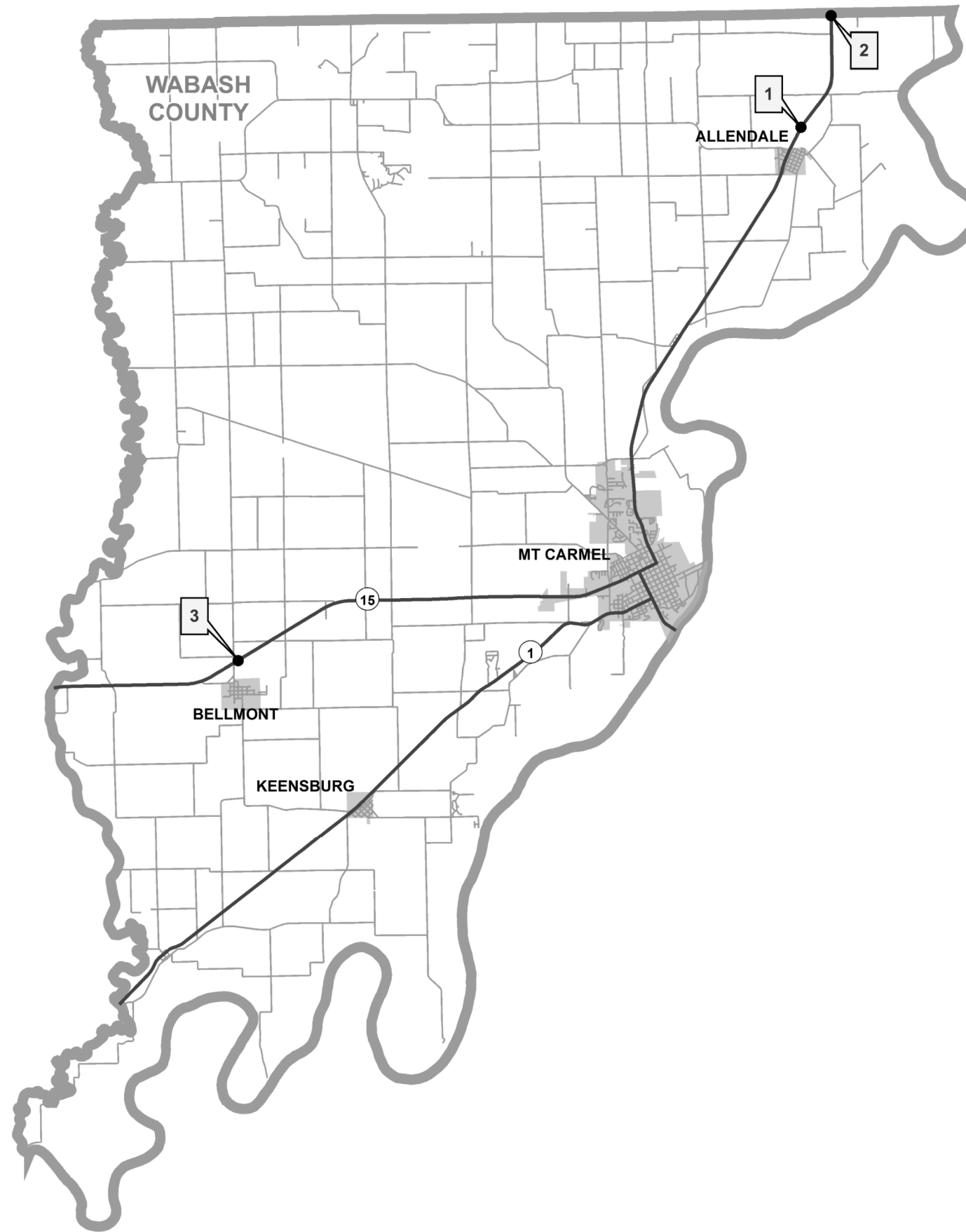
MODEL: Default
 FILE: \\blm1c2.pw.uspbarn.com\data\illinois.gov\PWIDOT\Documents\DOT_Offices\IDirect_7\Projects\74895\CADD\data\CADDsheets\DOT_74895-shc-schedule.dgn

Map Location	GIS Guardrail ID	Route	Terminal Location	Structure No./Intersection	Latitude	Longitude	Guardrail Removal (Foot)	Traffic Barrier Terminal Type 1 (Special) Tangent (Each)	Traffic Barrier Terminal Type 1 (Special) Flared (Each)	Steel Plate Beam Guardrail, Type A 6 Foot Posts (Foot)	Steel Plate Beam Guardrail, Type A 9 Foot Posts (Foot)	Steel Plate Beam Guardrail, Type B 9 Foot Posts (Foot)	Traffic Barrier Terminal Type 2 (Each)	Traffic Barrier Terminal Type 6 (Each)	Traffic Barrier Terminal Type 6A (Special) (Each)	Traffic Barrier Terminal Type 6B (Special) (Each)	Aggregate Shoulders (Special) (Ton)	Terminal Marker - Direct Applied	Guardrail Reflectors, Type A
1	0240010	IL 15	NW Quad	024-2005	38.37978792	-88.01870204	113	1		62.5								1	2
	0240012	IL 15	SE Quad	024-2005	38.37963169	-88.01783785	113	1		62.5								1	2
2	0240013	IL 15	SW Quad	024-2006	38.37957780	-88.00818046	238	1		62.5								1	2
	0240015	IL 15	NE Quad	024-2006	38.37972146	-88.00733787	113	1		62.5								1	2
	0240016	IL 15	SE Quad	024-2006	38.37957479	-88.00734048		1		25.0								1	1
3	0240021	IL 130	SE Quad	024-0005	38.36948735	-88.04963291	178	1		100.0			1					1	2
	0240022	IL 130	SW Quad	024-0005	38.36963088	-88.04989412	116	1		87.5			1					1	2
	0240023	IL 130	NW Quad	024-0005	38.37035437	-88.05017756	102		1	12.5			1					1	1
4	0240033	IL 130	NE Quad	024-7018	38.46786340	-88.05657028	25	1		12.5								1	1
	0240035	IL 130	SW Quad	024-7018	38.46790540	-88.05694407	25	1		37.5								1	1
					Edwards	TOTALS:	1021	9	1	525	0	0	0	3	0	0	0	10	16

Notes: Location 1: Remove existing rail to joint at first post attached to structure.

Location 2: Reuse existing posts attached to structure, install new blockouts at correct height.
 Removal for 0240016 included in 0240013.

USER NAME = steffenmk DESIGNED - DRAWN - PLOT SCALE = 100,0000 ' / in. CHECKED - PLOT DATE = 3/29/2019 DATE -	REVISED - REVISED - REVISED - REVISED -	STATE OF ILLINOIS DEPARTMENT OF TRANSPORTATION	EDWARDS COUNTY QUANTITY SCHEDULE	F.A. RTE.	SECTION	COUNTY	TOTAL SHEETS	SHEET NO.
SCALE:	SHEET 1			OF 1	SHEETS	STA.	TO STA.	ILLINOIS



MODEL: Default
 FILE: \\nas101.pw.state.il.us\pub\baronm.d\at\illinois.gov\PI\DOT\Documents\DOT_Offices\District_7\Projects\74895\CADD\data\CAD\sheet\74895-sht-dba.dgn

* EDWARDS, WABASH, & WAYNE
 ** D7 GUARDRAIL END SECTIONS 2019-2

USER NAME = steffenmk	DESIGNED -	REVISED -
	DRAWN -	REVISED -
PLOT SCALE = 100,0000 ' / in.	CHECKED -	REVISED -
PLOT DATE = 3/29/2019	DATE -	REVISED -

**STATE OF ILLINOIS
 DEPARTMENT OF TRANSPORTATION**

WABASH COUNTY GUARDRAIL MAP

SCALE: SHEET OF SHEETS STA. TO STA.

F.A. RTE.	SECTION	COUNTY	TOTAL SHEETS	SHEET NO.
	**	*	14	7
CONTRACT NO. 74895				
ILLINOIS FED. AID PROJECT				

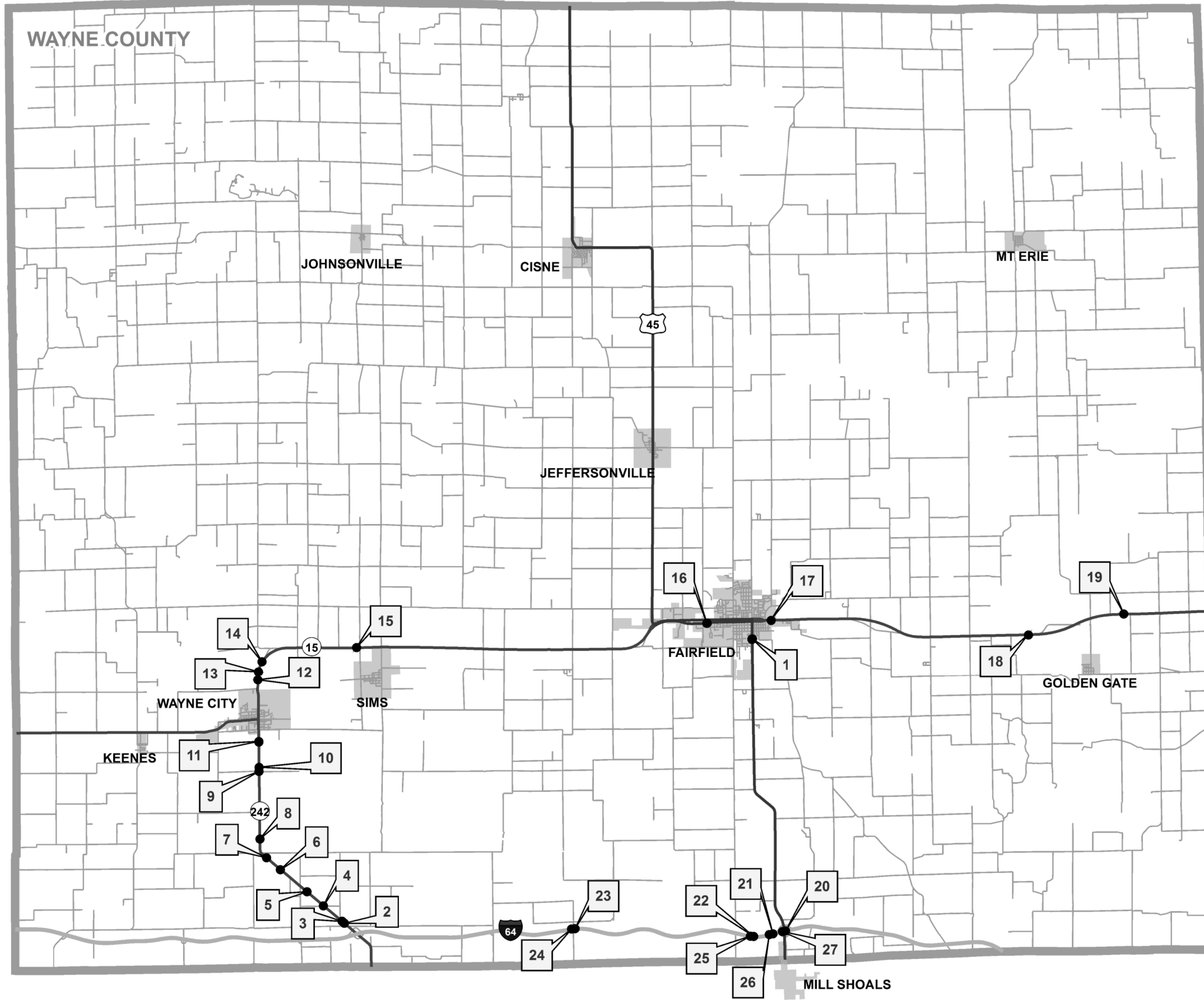
MODEL: Default
 FILE: \\blm1c1-pub\pub\arcom\ada\illinois.gov\PI\DOT\Documents\DOT_Offices\Illinet\7\Projects\74895\CADD\data\CAD\sheet\074895-shc-schedule.dgn

Map Location	GIS Guardrail ID	Route	Terminal Location	Structure No/Intersection	Latitude	Longitude	Guardrail Removal (Foot)	Traffic Barrier Terminal Type 1 (Special) Tangent (Each)	Traffic Barrier Terminal Type 1 (Special) Flared (Each)	Steel Plate Beam Guardrail, Type A 6 Foot Posts (Foot)	Steel Plate Beam Guardrail, Type A 9 Foot Posts (Foot)	Steel Plate Beam Guardrail, Type B 9 Foot Posts (Foot)	Traffic Barrier Terminal Type 2 (Each)	Traffic Barrier Terminal Type 6 (Each)	Traffic Barrier Terminal Type 6A (Special) (Each)	Traffic Barrier Terminal Type 6B (Special) (Each)	Aggregate Shoulders (Special) (Ton)	Terminal Marker - Direct Applied	Guardrail Reflectors, Type A
1	0930017	IL 1	SE Quad	093-2003	38.53586476	-87.70685729		1		25.0	50.0	25.0					4	1	2
	0930018	IL 1	SW Quad	093-2003	38.53608143	-87.70690001	538	1			25.0							1	1
	0930019	IL 1	NE Quad	093-2003	38.53719681	-87.70584672		1			25.0						4	1	1
	0930020	IL 1	NW quad	093-2003	38.53734623	-87.70590421	563	1		25.0	50.0	25.0						1	2
2	0930022	IL 1	SW Quad	093-0001	38.56698298	-87.69471911	160	1		87.5			1					1	2
	0930023	IL 1	NE Quad	093-0001	38.56841377	-87.69452839	160	1		87.5			1				1	1	2
3	0930039	IL 15	SW Quad	093-0010	38.39277919	-87.90993923	363	1		25.0						1		1	2
	0930040	IL 15	NW Quad	093-0010	38.39293587	-87.90993022	363	1								1		1	1
	0930041	IL 15	NE Quad	093-0010	38.39344026	-87.90882342		1		25.0						1		1	2
	0930042	IL 15	SE Quad	093-0010	38.39328443	-87.90883428		1								1		1	1
				Wabash	TOTALS:		2146	10	0	100	275	100	0	2	0	4	9	10	16

Notes: Location 1: Removal quantity for two Guardrail ID's
 Reuse posts attached to culvert top slab. Install new blockouts at correct height. (Paid as Type A, 6 foot posts.)

Location 3: Removal quantity for two Guardrail ID's

USER NAME = steffemk	DESIGNED -	REVISED -	STATE OF ILLINOIS DEPARTMENT OF TRANSPORTATION	WABASH COUNTY QUANTITY SCHEDULE				F.A. RTE.	SECTION	COUNTY	TOTAL SHEETS	SHEET NO.
	DRAWN -	REVISED -							*		14	8
PLOT SCALE = 100,0000' / in.	CHECKED -	REVISED -						CONTRACT NO. 74895				
PLOT DATE = 3/29/2019	DATE -	REVISED -						SCALE:	SHEET 1	OF 1 SHEETS	STA.	TO STA.



MODEL: Default
 FILE: \\nashville.pw.state.il.us\pub\baronm.d\at\illinois.gov\PI\DOT\Documents\DOT_Offices\District 7\Projects\74895\CADD\Drawings\74895-sht-clan.dgn

* EDWARDS, WABASH, & WAYNE
 ** D7 GUARDRAIL END SECTIONS 2019-2

USER NAME = steffemk	DESIGNED -	REVISED -
	DRAWN -	REVISED -
PLOT SCALE = 100,0000' / in.	CHECKED -	REVISED -
PLOT DATE = 3/29/2019	DATE -	REVISED -

STATE OF ILLINOIS
DEPARTMENT OF TRANSPORTATION

WAYNE COUNTY GUARDRAIL MAP

SCALE: SHEET OF SHEETS STA. TO STA.

F.A. RTE.	SECTION	COUNTY	TOTAL SHEETS	SHEET NO.
	**	*	14	9
CONTRACT NO. 74895				
ILLINOIS FED. AID PROJECT				

MODEL: Default
 FILE: \\blm01c-pub\pub\baronm.dwg
 PROJECT: \\blm01c-pub\pub\baronm.dwg
 OFFICE: \\blm01c-pub\pub\baronm.dwg
 DATE: 4/24/2019

Map Location	GIS Guardrail ID		Route	Terminal Location	Structure No/Intersection	Latitude	Longitude	Guardrail Removal (Foot)	Traffic Barrier Terminal Type 1 (Special) Tangent (Each)	Traffic Barrier Terminal Type 1 (Special) Flared (Each)	Traffic Barrier Terminal Type 2 (Each)	Steel Plate Beam Guardrail, Type A 6 Foot Posts (Foot)	Steel Plate Beam Guardrail, Type A 9 Foot Posts (Foot)	Traffic Barrier Terminal Type 6 (Each)	Traffic Barrier Terminal Type 6A (Special) (Each)	Traffic Barrier Terminal Type 6B (Special) (Each)	Weak Post Guardrail Attached to Culvert Case V (Foot)	Weak Post Guardrail Attached to Culvert Case VI (Foot)	Long Span Guardrail Over Culvert, 25 FT Span (Foot)	Steel Plate Beam Guardrail (Short Radius) (Foot)	Aggregate Shoulders (Special) (Ton)	Terminal Marker - Direct Applied (Each)	Guardrail Reflectors, Type A (Each)	
1	0960113	US 45	SW Quad	096-7038	38.37224843	-88.35996848	33	1									37.5					1	1	
	0960114	US 45	NW Quad	096-7038	38.37243040	-88.35996407	33	1				62.5											1	1
	0960115	US 45	NE Quad	096-7038	38.37243093	-88.35983172	33	1															1	1
	0960116	US 45	SE Quad	096-7038	38.37224951	-88.35983265	33	1									37.5						1	1
2	0960121	IL 242	SE Quad	Box N of 100N	38.27189996	-88.55020526	38	1				125.0					28						1	2
	0960122	IL 242	SW Quad	Box N of 100N	38.27184122	-88.55029739	38	1				62.5											1	1
	0960123	IL 242	NW Quad	Box N of 100N	38.27197756	-88.55049742	38	1				125.0					28						1	2
	0960124	IL 242	NE Quad	Box N of 100N	38.27203785	-88.55040703	38	1				62.5											1	1
3	0960125	IL 242	SE Quad	Box S of Mayberry Rd	38.27262920	-88.55126900	38														5			
	0960126	IL 242	SW Quad	Box S of Mayberry Rd	38.27254691	-88.55132516	38														5			
	0960127	IL 242	NW Quad	Box S of Mayberry Rd	38.27268265	-88.55152608	38														5			
	0960128	IL 242	NE Quad	Box S of Mayberry Rd	38.27276674	-88.55146838	38														5			
4	0960129	IL 242	SW Quad	096-7057	38.27831977	-88.55973903	38					25.0					40.5			13				1
	0960130	IL 242	SE Quad	096-7057	38.27839276	-88.55966181	38	1				62.5											1	1
	0960131	IL 242	NE Quad	096-7057	38.27852893	-88.55986256	38	1				62.5					40.5						1	1
	0960132	IL 242	NW Quad	096-7057	38.27845836	-88.55993803	38	1				125.0									8	1	2	
5	0960133	IL 242	SE Quad	Box S of 715E	38.28355424	-88.56718781	32														5			
	0960134	IL 242	SW Quad	Box S of 715E	38.28348597	-88.56726849	32														7			
	0960135	IL 242	NW Quad	Box S of 715E	38.28360046	-88.56743428	32														7			
	0960136	IL 242	NE Quad	Box S of 715E	38.28366866	-88.56735579	32														5			
6	0960137	IL 242	SW Quad	Box N of 690E	38.29171353	-88.57926407	38														5			
	0960138	IL 242	SE Quad	Box N of 690E	38.29181788	-88.57923217	38														6			
	0960139	IL 242	NE Quad	Box N of 690E	38.29195446	-88.57943260	38														5			
	0960140	IL 242	NW Quad	Box N of 690E	38.29185005	-88.57946450	38														6			

Notes: Location 1: Reuse 3 existing posts attached to structure directly over box culvert opening on west end.
 Locations 3, 5 & 6: See sheet numbers 12 & 13 for details of culvert extensions.

USER NAME = steffenmk	DESIGNED -	REVISED -	STATE OF ILLINOIS DEPARTMENT OF TRANSPORTATION	WAYNE COUNTY QUANTITY SCHEDULE				F.A. RTE.	SECTION	COUNTY	TOTAL SHEETS	SHEET NO.
	DRAWN -	REVISED -									14	10
PLOT SCALE = 100.0000' / in.	CHECKED -	REVISED -						CONTRACT NO. 74895				
PLOT DATE = 4/24/2019	DATE -	REVISED -		SCALE:	SHEET 1	OF 3 SHEETS	STA.	TO STA.	ILLINOIS FED. AID PROJECT		EDWARDS, WABASH, WAYNE	

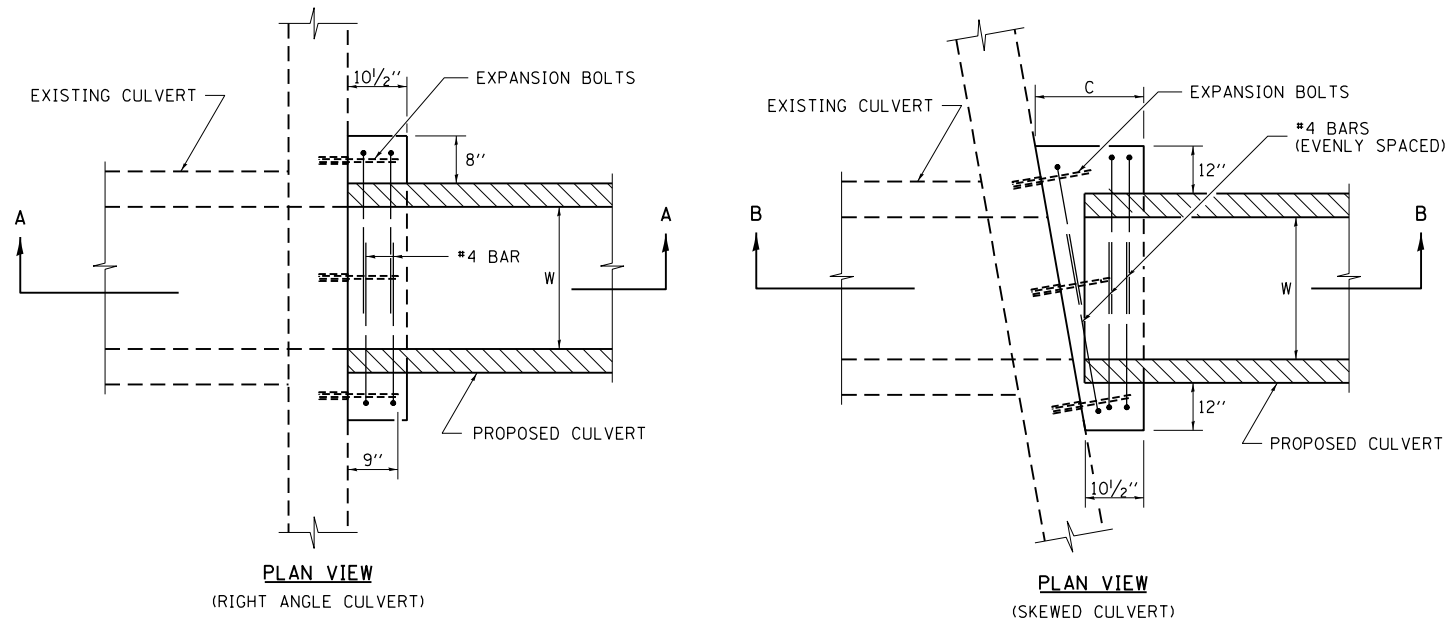
MODEL: Default
 FILE: \\nrcs-prodpubshare.com\data\links\gov\PIWDOT\Documents\DOT_Offices\Illinois\74895\CADD\data\CADD\sheet\074895-shc-schedule.dgn

Map Location	CIS Guardrail ID	Route	Terminal Location	Structure No./Intersection	Latitude	Longitude	Guardrail Removal (Foot)	Traffic Barrier Terminal Type 1 (Special) Tangent (Each)	Traffic Barrier Terminal Type 1 (Special) Flared (Each)	Traffic Barrier Terminal Type 2 (Each)	Steel Plate Beam Guardrail, Type A 6 Foot Posts (Foot)	Steel Plate Beam Guardrail, Type A 9 Foot Posts (Foot)	Traffic Barrier Terminal Type 6 (Each)	Traffic Barrier Terminal Type 6A (Special) (Each)	Traffic Barrier Terminal Type 6B (Special) (Each)	Weak Post Guardrail Attached to Culvert Case V (Foot)	Weak Post Guardrail Attached to Culvert Case VI (Foot)	Long Span Guardrail Over Culvert, 25 FT Span (Foot)	Steel Plate Beam Guardrail (Short Radius) (Foot)	Aggregate Shoulders (Special) (Ton)	Terminal Marker - Direct Applied (Each)	Guardrail Reflectors, Type A (Each)	
13	0960181	IL 15	SE Quad	096-0003	38.36279434	-88.58794160	160	1			75.0		1								1	1	
	0960184	IL 15	NW Quad	096-0003	38.36427742	-88.58778419	170	1			75.0		1									1	1
14	0960185	IL 15	SE Quad	096-0004	38.36672152	-88.58640984	160	1			75.0		1									1	1
	0960187	IL 15	NW Quad	096-0004	38.36760485	-88.58592486	59		1				1									1	1
15	0960197	IL 15	SW Quad	096-2008	38.37181801	-88.54287894	188	1			75.0			1								1	1
	0960198	IL 15	NW Quad	096-2008	38.37193734	-88.54266376	126	1			25.0			1								1	1
	0960199	IL 15	NE Quad	096-2008	38.37193429	-88.54152538	165	1			75.0			1								1	1
	0960200	IL 15	SE Quad	096-2008	38.37181592	-88.54165411	126	1			25.0			1								1	1
16	0960213	IL 15 EB	SW Quad	096-7076	38.37841412	-88.38066564	26	1														1	
	0960214	IL 15 EB	SE Quad	096-7076	38.37846698	-88.38049468	26			1							32						1
17	0960221	IL 15	NE Quad	096-2007	38.37916911	-88.35112559	38	1						1								1	1
18	0960232	IL 15	NE Quad	096-0010	38.37200889	-88.22970846	116	1			25.0		1									1	1
	0960235	IL 15	SW Quad	096-0010	38.37184917	-88.23483334	203	1			75.0		1									1	1
19	0960248	IL 15	SW Quad	096-0061	38.37855207	-88.18944550	228	1			75.0		1								8	1	1
	0960249	IL 15	NW Quad	096-0061	38.37865835	-88.18909496	128	1			25.0		1								8	1	1
	0960250	IL 15	SE Quad	096-0061	38.37855907	-88.18702375	128	1			25.0		1								8	1	1
	0960251	IL 15	NE Quad	096-0061	38.37866168	-88.18667582	228	1			75.0		1								8	1	1
20	0969303	I 64 WB	SE Quad	096-0053	38.26620628	-88.34699675	160	1			225.0		1									1	4
21	0969305	I 64 WB	SE Quad	096-0050	38.26519917	-88.35305046	160	1			225.0		1									1	4
22	0969307	I 64 WB	SE Quad	096-0048	38.26436190	-88.36190042	180	1			225.0		1									1	4
23	0969313	I 64 WB	SE Quad	096-0040	38.26843436	-88.44394608	180	1			225.0		1									1	4
24	0969320	I 64 EB	NW Quad	096-0039	38.26829877	-88.44552385	180	1			225.0		1									1	4
25	0969326	I 64 EB	NW Quad	096-0047	38.26449394	-88.36338799	180	1			225.0		1									1	4
26	0969328	I 64 EB	NW Quad	096-0049	38.26493512	-88.35468855	185	1			225.0		1									1	4
27	0969330	I 64 EB	NW Quad	096-0059	38.26592644	-88.348861706	162	1			225.0		1									1	4
					Wayne	TOTALS:	5522	51	1	1	2600.0	1820.0	21	5	0	344	107	88	38	280	52	85	

Location 16: Contractor shall provide at no additional cost 4" thick treated wood spacers for lower mounting points of posts attached to structure.

USER NAME = stefenmk	DESIGNED -	REVISED -	STATE OF ILLINOIS DEPARTMENT OF TRANSPORTATION	WAYNE COUNTY QUANTITY SCHEDULE			F.A. RTE.	SECTION	COUNTY	TOTAL SHEETS	SHEET NO.
	DRAWN -	REVISED -						*		14	12
PLOT SCALE = 100.0000' / in.	CHECKED -	REVISED -					CONTRACT NO. 74895				
PLOT DATE = 4/24/2019	DATE -	REVISED -					SCALE:	SHEET 3	OF 3 SHEETS	STA.	TO STA.

DETAIL OF CONCRETE COLLAR FOR BOX CULVERT EXTENSIONS

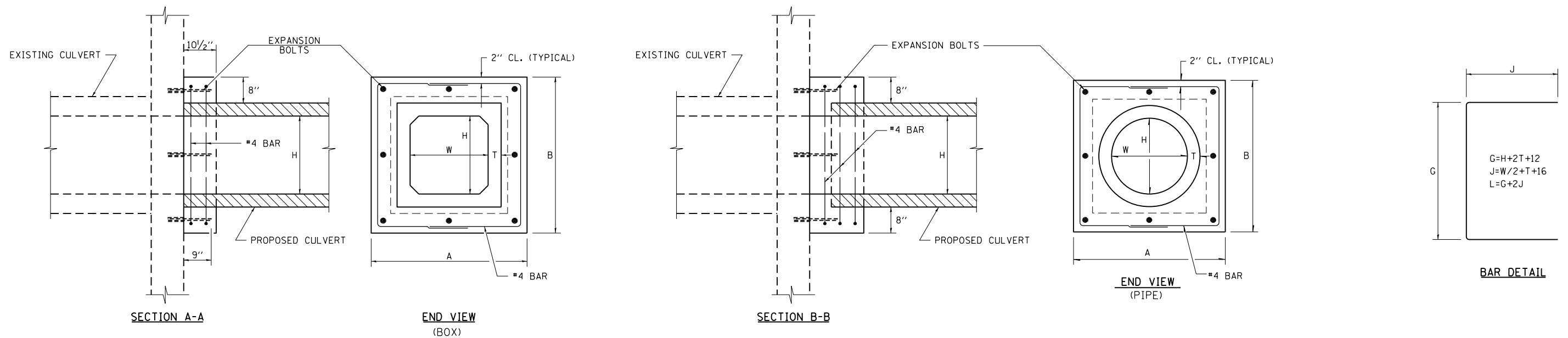


NOTE: PIPE OR BOX MAY BE BEVELED TO MATCH EXISTING BOX SKEW ANGLE
 LOCATIONS # 3 & 6 HAVE 30 DEG. SKEW, LOCATION # 7 HAS 45 DEG. SKEW

CONCRETE COLLAR SCHEDULE

LOC. NUMBER	DIMENSIONS						REINFORCEMENT BARS					EXTENSION		CONC. COLLAR C. Y.	EXP. BOLTS EACH
	A	B	C	W	H	T	G	J	L	NUMBER BARS	POUND	LENGTH FT.	END SECTIONS EACH		
	IN	IN	IN	IN	IN	IN	IN	IN	IN	EA					
3	61	53	46	30	30	3.5	49	34.5	118	12	79	12	2	2.6	16
5	53	53	N/A	30	30	3.5	49	34.5	118	8	53	10	2	0.8	16
6	68	60	50	36	36	4	56	38	132	12	176	22	2	2.8	24
7	82	74	92.5	48	48	5	70	45	160	12	214	22	2	7.2	32

NOTES: EXPANSION BOLTS SHALL CONSIST OF SELF-DRILLING EXPANSION SHIELDS AND HOOKED BOLTS. HOOKED BOLTS SHALL EXTEND A MINIMUM OF 9" INTO THE NEW CONCRETE. QUANTITIES INCLUDE BOTH SIDES OF ROAD AT EACH LOCATION. LOCATIONS #3 & #5 USE 30" PIPE, #6 REQUIRES 3X3 BOX, #7 REQUIRES 4X4 BOX



MODEL: Default
 FILE: h:\m\c\p\pub\h\room\dat\illinois.gov\PI\DOT\Documents\DOT_Offices\Illinet\74895\CADD\Drawings\74895-sch-detailed.dgn

USER NAME = steffemk	DESIGNED -	REVISED -
PLOT SCALE = 100.0000' / in.	DRAWN -	REVISED -
PLOT DATE = 3/29/2019	CHECKED -	REVISED -
	DATE -	REVISED -

**STATE OF ILLINOIS
 DEPARTMENT OF TRANSPORTATION**

**CULVERT EXTENSION DETAILS
 WAYNE COUNTY**

SCALE: SHEET OF SHEETS STA. TO STA.

F.A. RTE.	SECTION	COUNTY	TOTAL SHEETS	SHEET NO.
	*		14	13
CONTRACT NO. 74895				

