

STATE OF ILLINOIS  
DEPARTMENT OF TRANSPORTATION

F.A.P. R.T.E.	SECTION	COUNTY	TOTAL SHEETS	SHEET NO.
327		CLAY	8	1
		ILLINOIS	CONTRACT NO. 74901	

D-97'018'19



FOR INDEX OF SHEETS, SEE SHEET NO. 2

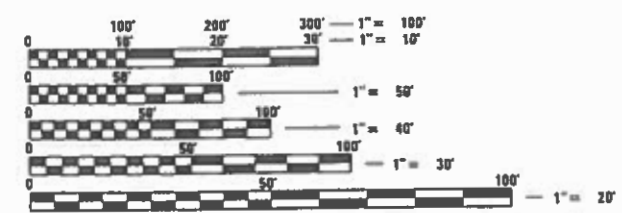
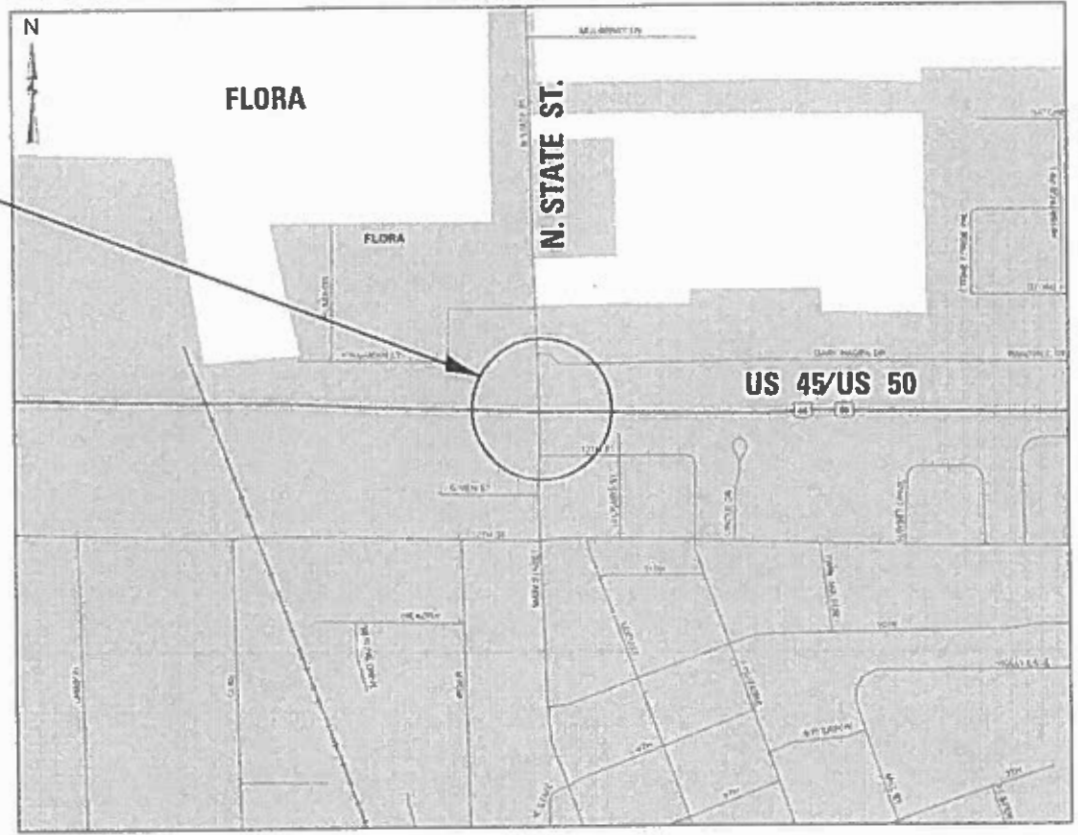
**PROPOSED  
HIGHWAY PLANS**

FAP ROUTE 327 (US 45 & US 50)  
SECTION D7 SIGNAL MODERNIZATION 2019-1  
PROJECT NHPP-H1JX(105)  
TRAFFIC SIGNAL MODERNIZATION  
CLAY COUNTY

C-97-030-19

ADT = 7,500 (2017)

PROJECT LOCATION



FULL SIZE PLANS HAVE BEEN PREPARED USING STANDARD ENGINEERING SCALES. REDUCED SIZED PLANS WILL NOT CONFORM TO STANDARD SCALES. IN MAKING MEASUREMENTS ON REDUCED PLANS, THE ABOVE SCALES MAY BE USED.

J.U.L.I.E.  
JOINT UTILITY LOCATION INFORMATION FOR EXCAVATORS  
1-800-892-0123  
OR 811

PROJECT ENGINEER: ROB MACKLIN  
PROJECT MANAGER: ROB MACKLIN

CONTRACT NO. 74901

STATE OF ILLINOIS  
DEPARTMENT OF TRANSPORTATION

SUBMITTED MARCH 21 2019  
Jeffrey M Smith  
REGIONAL ENGINEER

May 10 2019  
[Signature]  
ENGINEER OF DESIGN AND ENVIRONMENT

May 19 2019  
[Signature]  
DIRECTOR OF HIGHWAYS PROJECT IMPLEMENTATION

PRINTED BY THE AUTHORITY  
OF THE STATE OF ILLINOIS

036

TRAFFIC SIGNAL GENERAL NOTES

THE EXISTING UTILITY LINES ARE SHOWN ON THE PLANS TO INDICATE THEIR PRESENCE AND APPROXIMATE LOCATION. THE CONTRACTOR SHALL VERIFY THE EXACT LOCATION OF ALL UNDERGROUND UTILITIES PRIOR TO BEGINNING CONSTRUCTION. CALL J.U.L.I.E. AT 811. THE TRAFFIC SIGNAL UTILITY LINES WILL BE LOCATED BY THE CONTRACTOR.

THE TRAFFIC SIGNAL ENGINEER AT THE ILLINOIS DEPARTMENT OF TRANSPORTATION SHALL BE NOTIFIED AT 217-342-8291 AT LEAST 72 HOURS PRIOR TO TURNING ON ANY FLASHER OR CONTROLLER UNIT.

THE CONTRACTOR SHALL ARRANGE FOR A FACTORY OR SUPPLIER REPRESENTATIVE TO BE PRESENT AT THE INTERSECTION WHEN THE SIGNALS ARE TURNED ON. THE REPRESENTATIVE SHALL MAKE CERTAIN THAT ALL EQUIPMENT OPERATES TO THE SATISFACTION OF THE ENGINEER.

A 2 FOOT MINIMUM, 6 FOOT DESIRABLE, HORIZONTAL CLEARANCE SHALL BE MAINTAINED FROM THE BACK OF CURB TO THE EDGE OF HANDHOLES, JUNCTION BOXES AND SIGNAL POST FOUNDATIONS. A 5 FOOT MINIMUM HORIZONTAL CLEARANCE SHALL BE MAINTAINED FROM THE BACK OF THE CURB TO ALL MAST ARM FOUNDATIONS. CONTROLLER FOUNDATIONS SHALL BE LOCATED AS FAR FROM THE BACK OF THE CURB AS POSSIBLE TO PROTECT THE CONTROLLER CABINET.

ALL THREADS OF BOLTS USED IN ASSEMBLY OF TRAFFIC SIGNAL COMPONENTS SHALL BE COATED WITH A NON-LEAD BASED ANTI-SEIZE COMPOUND, SIMILAR TO LEAD PLATE, PRIOR TO ASSEMBLY.

THE NUMBER OF CONDUCTORS FOR ELECTRIC CABLES AS SHOWN ON THE PLANS SHALL BE THE MINIMUM NUMBER OF CONDUCTORS FURNISHED FOR EACH LOCATION. THE CONTRACTOR MAY SUBSTITUTE AN ELECTRIC CABLE WITH MORE CONDUCTORS THAN SPECIFIED BUT NO ADDITIONAL COMPENSATION WILL BE MADE FOR THE EXTRA CONDUCTORS.

ALL NEW TRAFFIC SIGNAL WIRING SHALL EXTEND FROM CONTROLLER TO SIGNAL. SPLICES IN HANDHOLES WILL NOT BE ALLOWED.

ALL MAST ARM MOUNTED SIGNAL HEADS ON AN INDIVIDUAL MAST ARM SHALL BE MOUNTED SO THAT THE RED INDICATIONS ARE LEVEL WITH EACH OTHER.

ALL MAST ARM MOUNTED SIGNAL HEADS SHALL BE MOUNTED AS TO ALIGN WITH THE CENTER OF THE LANE UNLESS OTHERWISE SHOWN ON THE PLANS.

INDEX OF SHEETS

SHEET NO	TITLE
1	COVER SHEET
2	GENERAL NOTES, INDEX OF SHEETS, LIST OF STANDARDS
3-4	SUMMARY OF QUANTITIES
5	DETAILS
6	TRAFFIC SIGNAL PLANS-UTILITY LAYOUT
7	TRAFFIC SIGNAL PLANS-SIGNAL LAYOUT
8	TRAFFIC SIGNAL PLANS-CABLE LAYOUT

THE FOLLOWING STANDARDS ARE A PART OF THESE PLANS AND ARE INCLUDED FOLLOWING THE LAST NUMBERED SHEET OF THE PLANS.

000001-07	STANDARD SYMBOLS, ABBREVIATIONS, AND PATTERNS
001006	DECIMAL OF AN INCH AND OF A FOOT
606301-04	PC CONCRETE ISLANDS AND MEDIANS
701006-05	OFF-ROAD OPERATIONS, 2L, 2W, 15' TO 24" FROM PAVEMENT EDGE
701201-05	LANE CLOSURE, 2L, 2W, DAY ONLY, FOR SPEEDS >= 45 MPH
701701-10	URBAN LANE CLOSURE, MULTILANE INTERSECTION
701901-08	TRAFFIC CONTROL DEVICES
720001-01	SIGN PANEL MOUNTING DETAILS
720006-04	SIGN PANEL ERECTION DETAILS
720016-04	MAST ARM MOUNTED STREET NAME SIGNS
780001-05	TYPICAL PAVEMENT MARKINGS
805001-01	ELECTRICAL SERVICE INSTALLATION DETAILS
814001-03	HANDHOLES
814006-02	DOUBLE HANDHOLES
857001-01	STANDARD PHASE DESIGNATION DIAGRAMS AND PHASE SEQUENCES
873001-02	TRAFFIC SIGNAL GROUNDING & BONDING
877001-07	STEEL MAST ARM ASSEMBLY AND POLE 16' THROUGH 55'
878001-10	CONCRETE FOUNDATION DETAILS
880006-01	TRAFFIC SIGNAL MOUNTING DETAILS
886001-01	DETECTOR LOOP INSTALLATIONS
886006-01	TYPICAL LAYOUTS FOR DETECTION LOOPS

REV. - MS

FILE NAME =	USER NAME = steffennik	DESIGNED -	REVISED -	<b>STATE OF ILLINOIS DEPARTMENT OF TRANSPORTATION</b>	<b>INDEX OF SHEETS &amp; GENERAL NOTES</b>	F.A.P. RTE.	SECTION	COUNTY	TOTAL SHEETS	SHEET NO.
pw:\planroom.dot.illinois.gov\PWIDOT\Documents\IDOT Offices\District 7\Projects\74901\CDRAWING\CAD\sheets\0774901-sht-genote.dgn	DESIGNED -	REVISED -	327				CLAY	8	2	
Default	PLOT SCALE = 20.0000' / in.	CHECKED -	REVISED -			CONTRACT NO. 74901				
	PLOT DATE = 3/22/2019	DATE -	REVISED -			SCALE:	SHEET OF SHEETS STA. TO STA.	ILLINOIS FED. AID PROJECT		

80% FED  
20% STATE

80% FED  
20% STATE

SUMMARY OF QUANTITIES			TOTAL QUANTITIES	CONSTRUCTION TYPE CODE		
CODE NO	ITEM	UNIT		0021		
60618300	CONCRETE MEDIAN SURFACE, 4 INCH	SO FT	745	745		
67100100	MOBILIZATION	L SUM	1	1		
70100450	TRAFFIC CONTROL AND PROTECTION, STANDARD	L SUM	1	1		
	701201					
70102635	TRAFFIC CONTROL AND PROTECTION, STANDARD	L SUM	1	1		
	701701					
80500100	SERVICE INSTALLATION, TYPE A	EACH	1	1		
81028310	UNDERGROUND CONDUIT, PVC, 3/4" DIA.	FOOT	264	264		
81028320	UNDERGROUND CONDUIT, PVC, 1" DIA.	FOOT	690	690		
81028350	UNDERGROUND CONDUIT, PVC, 2" DIA.	FOOT	220	220		
81028390	UNDERGROUND CONDUIT, PVC, 4" DIA.	FOOT	392	392		
81028410	UNDERGROUND CONDUIT, PVC, 6" DIA.	FOOT	10	10		
81400730	HANDHOLE, COMPOSITE CONCRETE	EACH	5	5		
81400740	DOUBLE HANDHOLE, COMPOSITE CONCRETE	EACH	1	1		
81500120	GULFBOX JUNCTION, COMPOSITE CONCRETE	EACH	2	2		

SUMMARY OF QUANTITIES			TOTAL QUANTITIES	CONSTRUCTION TYPE CODE		
CODE NO	ITEM	UNIT		0021		
81500130	GULFBOX JUNCTION REMOVAL	EACH	2	2		
85700200	FULL-ACTUATED CONTROLLER AND TYPE IV CABINET	EACH	1	1		
87301245	ELECTRIC CABLE IN CONDUIT, SIGNAL NO. 14 5C	FOOT	3355	3355		
87301305	ELECTRIC CABLE IN CONDUIT, LEAD-IN, NO. 14	FOOT	1665	1665		
	1 PAIR					
87301805	ELECTRIC CABLE IN CONDUIT, SERVICE, NO. 6	FOOT	20	20		
	2 C					
87301900	ELECTRIC CABLE IN CONDUIT, EQUIPMENT	FOOT	682	682		
	GROUNDING CONDUCTOR, NO. 6 1C					
87502480	TRAFFIC SIGNAL POST, GALVANIZED STEEL 14 FT.	EACH	6	6		
87700200	STEEL MAST ARM ASSEMBLY AND POLE, 32 FT.	EACH	2	2		
87700230	STEEL MAST ARM ASSEMBLY AND POLE, 38 FT.	EACH	2	2		
87800100	CONCRETE FOUNDATION, TYPE A	FOOT	18	18		
87800200	CONCRETE FOUNDATION, TYPE D	FOOT	3.5	3.5		
87800415	CONCRETE FOUNDATION, TYPE E 36-INCH DIAMETER	FOOT	44	44		

MODEL: Default  
 FILE: Model: Pub\publansroom.dwg  
 I:\Projects\74901\CADData\CAD\Drawings\DOT\Office\Drawings\74901\ehs-500.dgn

USER NAME = steffenmk	DESIGNED -	REVISED -
	DRAWN -	REVISED -
PLOT SCALE = 100.0000' / in.	CHECKED -	REVISED -
PLOT DATE = 3/22/2019	DATE -	REVISED -

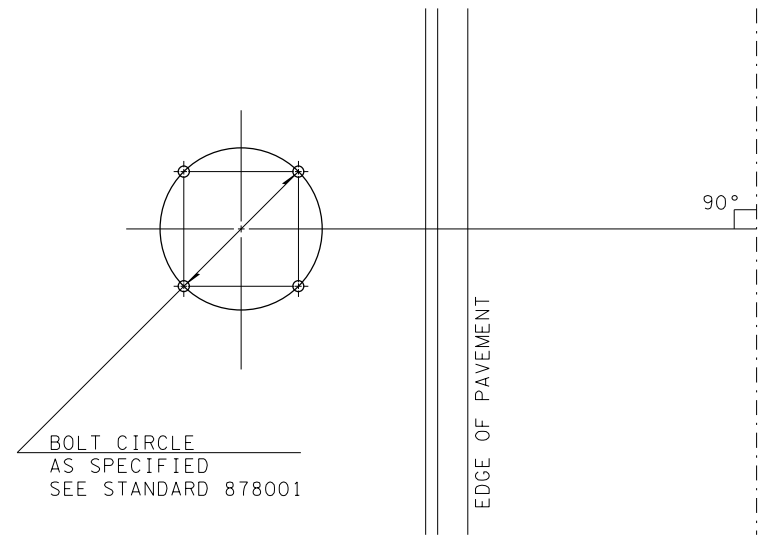
**STATE OF ILLINOIS  
DEPARTMENT OF TRANSPORTATION**

**SUMMARY OF QUANTITIES**

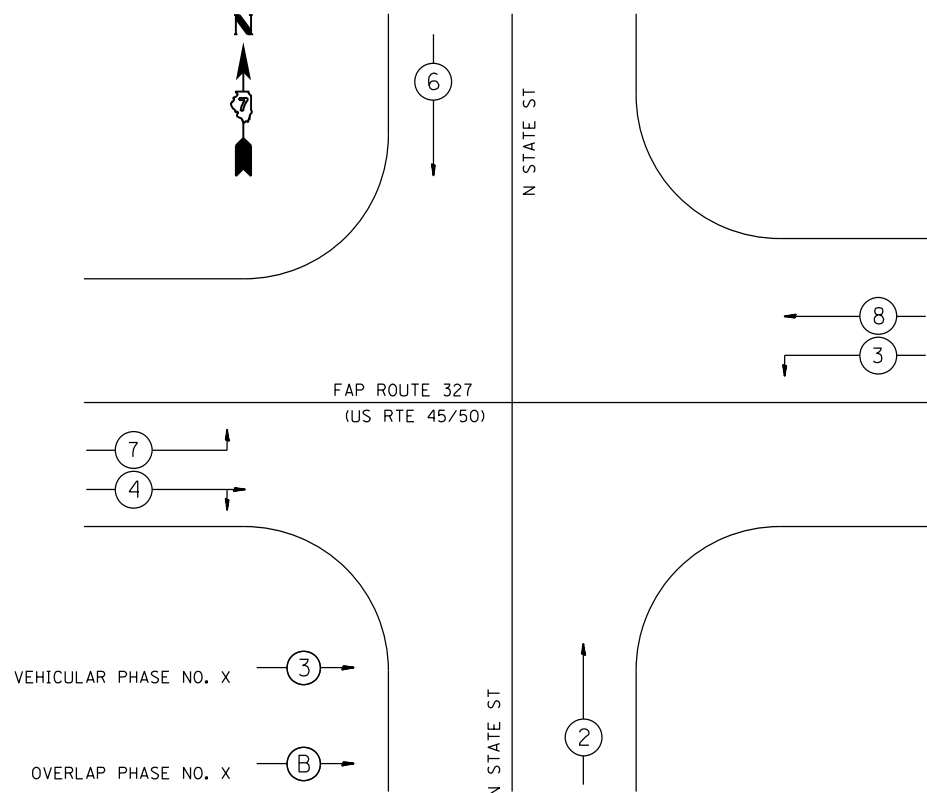
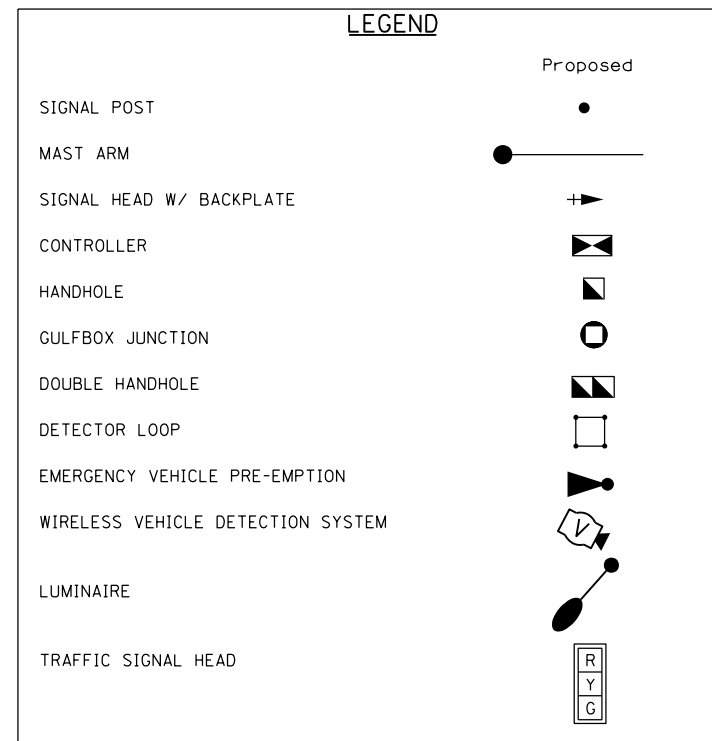
SCALE: SHEET OF SHEETS STA. TO STA.

F.A.P. RTE.	SECTION	COUNTY	TOTAL SHEETS	SHEET NO.
327	*	CLAY	8	3
CONTRACT NO. 74901				
ILLINOIS FED. AID PROJECT				

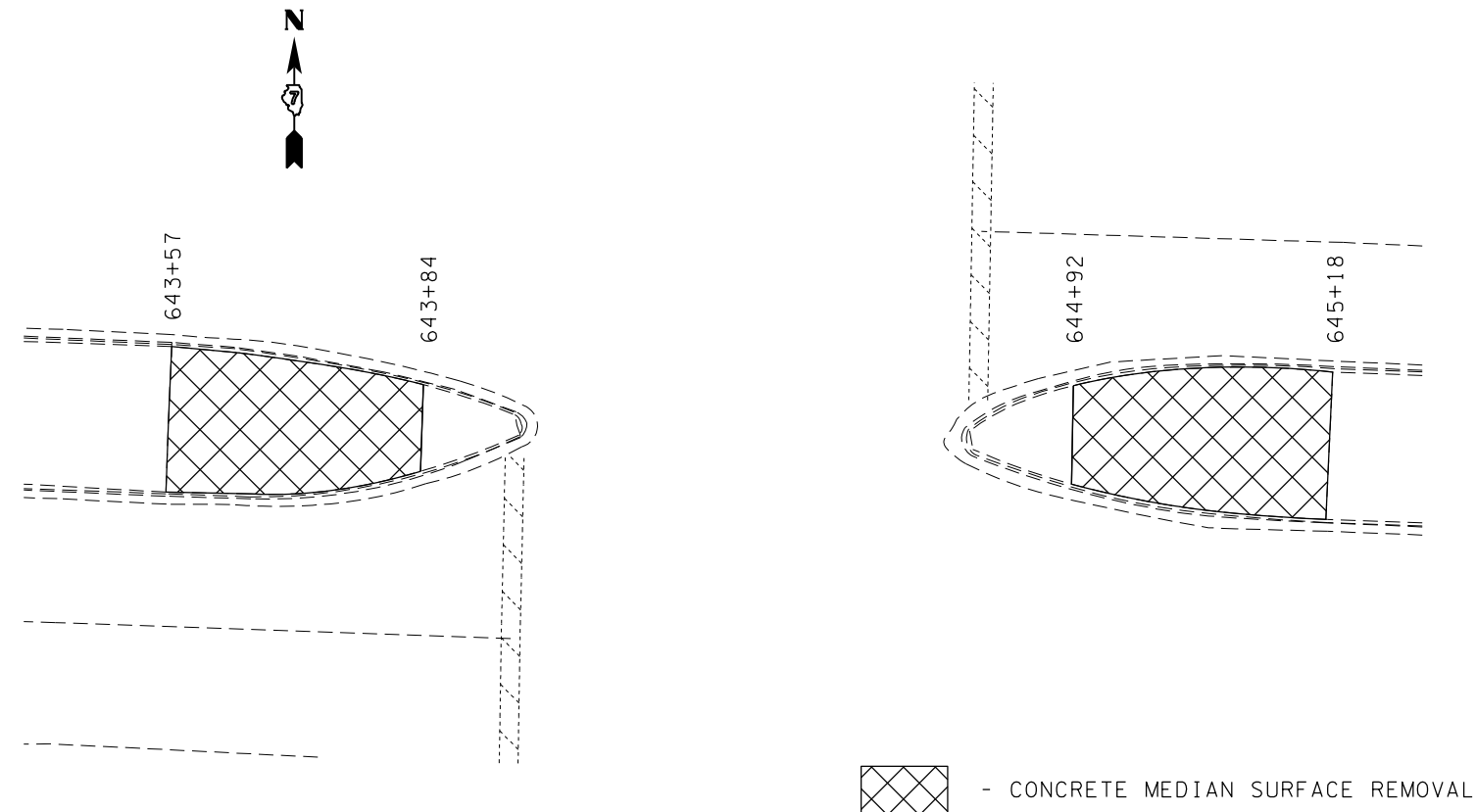




DETAIL OF MAST ARM FOUNDATION BOLT PATTERN



PHASE DESIGNATION DIAGRAM



MEDIAN DETAILS

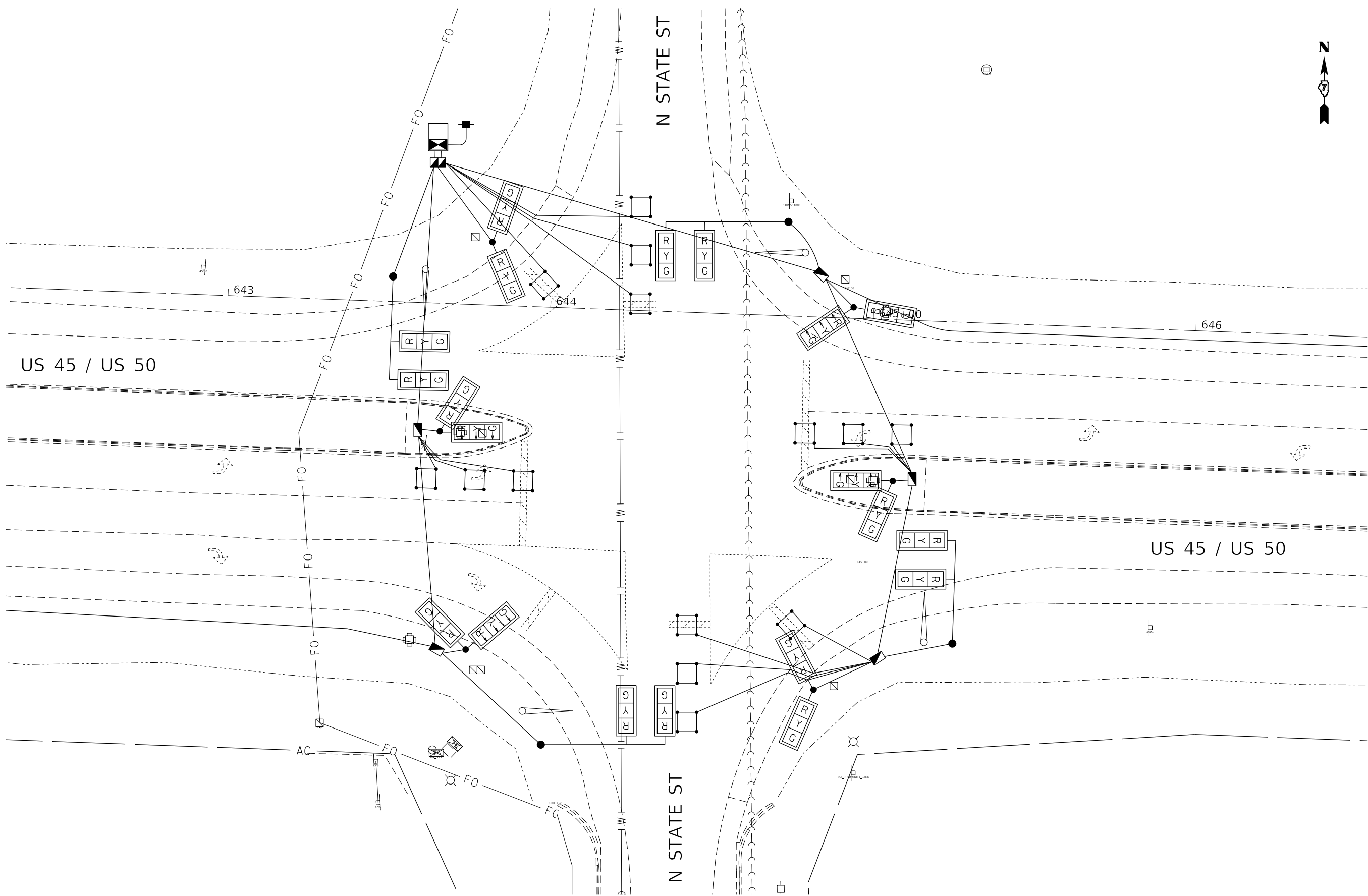
FILE NAME =	USER NAME = steffenmk	DESIGNED -	REVISED -
pw:\planroom.dot.illinois.gov\PIDOT\Documents\IDOT Offices\District 7\Projects\74901\CAD\CAD sheets\0774901-sht-details.dgn		REVISION	REVISION
Default	PLOT SCALE = 20.0000' / in.	CHECKED -	REVISED -
	PLOT DATE = 3/22/2019	DATE -	REVISED -

STATE OF ILLINOIS  
DEPARTMENT OF TRANSPORTATION

DETAILS

SCALE: SHEET OF SHEETS STA. TO STA.

F.A.P. RTE.	SECTION	COUNTY	TOTAL SHEETS	SHEET NO.
327	•	CLAY	8	5
CONTRACT NO. 74901			ILLINOIS FED. AID PROJECT	



MODEL: Default  
 FILE: Model: Project\Roadwork\Documents\DOT\_Offices\Drawings\74901\CADDData\CADDsheets\74901-1-sch-plan.dgn

USER NAME = steffemk	DESIGNED -	REVISED -
	DRAWN -	REVISED -
PLOT SCALE = 30.0000' / in.	CHECKED -	REVISED -
PLOT DATE = 3/22/2019	DATE -	REVISED -

**STATE OF ILLINOIS**  
**DEPARTMENT OF TRANSPORTATION**

<b>US 45 / US 50 &amp; N STATE ST</b>			
<b>UTILITY LAYOUT</b>			
SCALE:	SHEET	OF SHEETS	STA. TO STA.

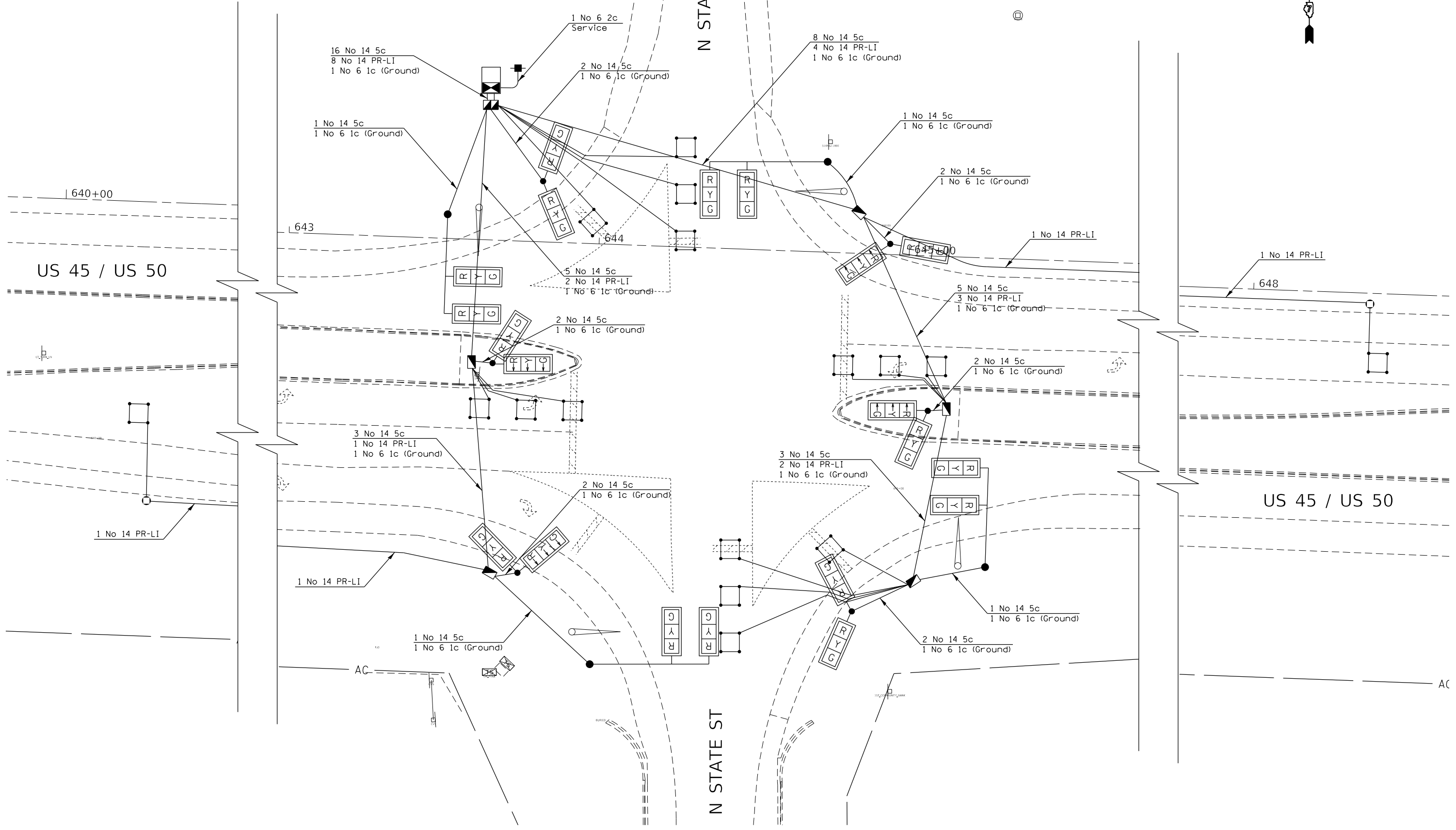
F.A.P. RTE.	SECTION	COUNTY	TOTAL SHEETS	SHEET NO.
327	*	CLAY	8	6
CONTRACT NO. 74901				
ILLINOIS FED. AID PROJECT				





N STATE ST

N STATE ST



US 45 / US 50

US 45 / US 50

MODEL: Default  
 FILE: \\blm1c:\pub\baronm.dwg  
 PROJECT: 74901\CAD\Drawings\DOT\_Offices\Drawings\74901-1-sig-blm.dgn

USER NAME = steffenmk	DESIGNED -	REVISED -
	DRAWN -	REVISED -
PLOT SCALE = 30.0000" / in.	CHECKED -	REVISED -
PLOT DATE = 3/22/2019	DATE -	REVISED -

**STATE OF ILLINOIS  
DEPARTMENT OF TRANSPORTATION**

**US 45 / US 50 & N STATE ST  
CABLE LAYOUT**

SCALE: SHEET OF SHEETS STA. TO STA.

F.A.P. RTE. 327	SECTION *	COUNTY CLAY	TOTAL SHEETS 8	SHEET NO. 8
CONTRACT NO. 74901			ILLINOIS FED. AID PROJECT	