

STATE OF ILLINOIS
DEPARTMENT OF TRANSPORTATION

FAP AYE	SECTION	COUNTY	TOTAL SHEETS	SHEET NO
821	(13-2,13,13Z)RS-7	JEFFERSON	24	1
		ILLINOIS	CONTRACT NO 78727	

D-99-034-19



FOR INDEX OF SHEETS, SEE SHEET NO. 3
FOR SUMMARY OF QUANTITIES, SEE SHEET NO. 5

TRAFFIC DATA - (2017 ADT)
IL 15 - 19,500 WITH 6.4% TRUCKS

POSTED SPEED LIMITS
35 MPH AND 40 MPH

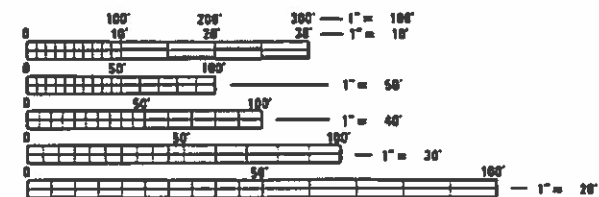
TOWNSHIPS
SHILOH
MOUNT VERNON

DESIGN DESIGNATION
22,190(20) OTHER PRINCIPAL ARTERIAL 3.25 (FD-20)

COORDINATE SYSTEM:
EPSG: 102671 - NAD 1983
STATE PLANE ILLINOIS EAST FIPS 1201 EAST

STATION EQUATIONS

STA. 564+83.45 BK = STA. 564+89.51 AH
 STA. 584+41.68 BK = STA. 584+40.70 AH
 STA. 594+72.11 BK = STA. 594+69.74 AH



FULL SIZE PLANS HAVE BEEN PREPARED USING STANDARD ENGINEERING SCALES. REDUCED SIZED PLANS WILL NOT CONFORM TO STANDARD SCALES. IN MAKING MEASUREMENTS ON REDUCED PLANS, THE ABOVE SCALES MAY BE USED.

J.U.L.I.E.
JOINT UTILITY LOCATION INFORMATION FOR EXCAVATORS
1-800-892-0123
OR 811

PROJECT ENGINEER: SUSAN POE
PROJECT DESIGNER: NATHAN TAYLOR

CONTRACT NO. 78727

PROPOSED HIGHWAY PLANS

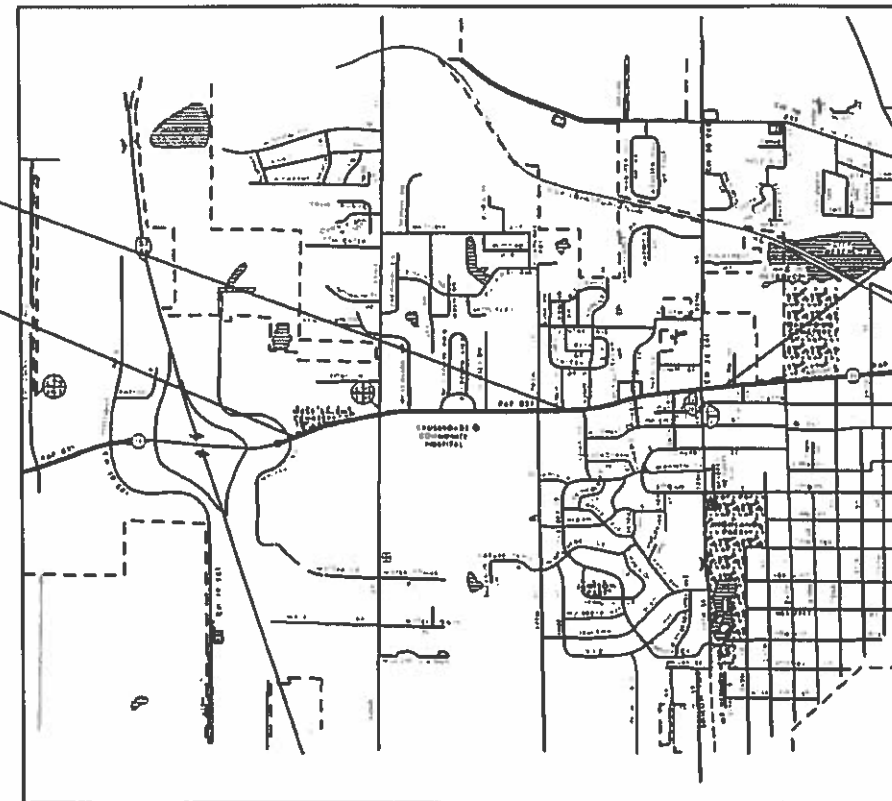
FAP ROUTE 821 (IL ROUTE 15)
SECTION (13-2,13,13Z)RS-7
PROJECT NHPP-ETXF(792)
HMA RESURFACING
JEFFERSON COUNTY

C-99-056-19

STRUCTURE
041-7070

BEGIN PROJECT IL 15
STA 543+46

END PROJECT IL 15
STA 612+60



T 2 S

R 2 E

GROSS LENGTH = 6911.29 FT. = 1.31 MILE
NET LENGTH = 6911.29 FT. = 1.31 MILE

STATE OF ILLINOIS
DEPARTMENT OF TRANSPORTATION

SUBMITTED March 28 2019
Kurtz Robinson REGIONAL ENGINEER

May 10 2019 or E.A. ETC
ENGINEER OF DESIGN AND ENVIRONMENT

Paul P. Chaf
DIRECTOR OF HIGHWAYS PROJECT IMPLEMENTATION

PRINTED BY THE AUTHORITY
OF THE STATE OF ILLINOIS

MOBILE DEBOUT
FILE NAME: P:\Projects\13-2.13.13Z\RS-7\13-2.13.13Z\DOT-Office\District_9\Project\13-2.13.13Z\CADD\13-2.13.13Z\Sheet\13-2.13.13Z-SHA-CW-SHA-Isdcs.dwg

Prepared By: Charles Stein
DISTRICT STUDIES & PLANS ENGINEER

Examined By: _____
DISTRICT LAND ACQUISITION ENGINEER

Examined By: Carrie Nelson
DISTRICT PROGRAM DEVELOPMENT ENGINEER

Examined By: Keel Nohy
DISTRICT OPERATIONS ENGINEER

Examined By: Keith Roberts
DISTRICT PROJECT IMPLEMENTATION ENGINEER

Examined By: Douglas Telford
DISTRICT CONSTRUCTION ENGINEER

Examined By: _____
DISTRICT MATERIALS ENGINEER

USER NAME = taylornd	DESIGNED - _____	REVISED - _____
PLOT SCALE = 2 0000' / 1" = 20000	DRAWN - _____	REVISED - _____
PLOT DATE = 3/22/2019	CHECKED - _____	REVISED - _____
	DATE - _____	REVISED - _____

**STATE OF ILLINOIS
DEPARTMENT OF TRANSPORTATION**

SIGNATURE SHEET

SCALE: _____ SHEET 2 OF 24 SHEETS STA. _____ TO STA. _____

F.A.P. RTE.	SECTION	COUNTY	TOTAL SHEETS	SHEET NO.
821	(13-2.13.13Z)RS-7	JEFFERSON	24	2
CONTRACT NO. 78727				
ILLINOIS FED. AID PROJECT				

INDEX OF SHEETS

SHEET NO	DESCRIPTION
1	COVER SHEET
2	SIGNATURE SHEET
3	INDEX OF SHEETS, GENERAL NOTES, LIST OF STANDARDS, AND MTD CROSSING RESTRICTIONS
4	MIX DESIGNS
5-7	SUMMARY OF QUANTITIES
8	TYPICAL SECTION
9-16	SCHEDULE OF QUANTITIES
17-22	PAVEMENT MARKING
23	TEMPORARY HOT-MIX ASPHALT TRANSITIONS
24	ROUGH GROOVED SURFACE AND UNEVEN LANE SIGNS, AND DETECTOR LOOPS

GENERAL NOTES

QUANTITIES SHOWN IN THE PLANS FOR PATCHING ARE ESTIMATES. THE ACTUAL AMOUNT OF PATCHING REQUIRED WILL BE DETERMINED BY THE ENGINEER.

THERE ARE NO AVAILABLE WASTE SITES ON THE EXISTING RIGHT OF WAY WITHIN THE PROJECT LIMITS. DISPOSAL WILL BE THE RESPONSIBILITY OF THE CONTRACTOR AND WASTE MUST BE DISPOSED OF IN ACCORDANCE WITH ARTICLE 202.03 OF THE STANDARD SPECIFICATIONS.

FACTORS USED FOR ESTIMATING PLAN QUANTITIES ARE AS FOLLOWS AND SHALL NOT BE USED FOR THE BASIS OF FINAL QUANTITIES:

ALL HOT MIX ASPHALT	2.016 TONS/CU.YD.
ALL AGGREGATE	2.05 TONS/CU.YD.

THE THICKNESS OF HOT MIX ASPHALT MIXTURE SHOWN ON THE PLANS IS THE NOMINAL THICKNESS. DEVIATIONS FROM THE NOMINAL THICKNESS WILL BE PERMITTED WHEN SUCH DEVIATIONS OCCUR DUE TO IRREGULARITIES IN THE EXISTING SURFACE OR BASE ON WHICH THE HOT MIX ASPHALT MIXTURE IS PLACED.

THE QUANTITY OF SHORT TERM PAVEMENT MARKING SHOWN IN THE PLANS IS BASED ON ONE APPLICATION EACH FOR THE HMA SURFACE REMOVAL, SURFACE COURSE, AND BINDER COURSE.

THE CONTRACTOR SHALL STAMP STATIONING IN THE PROPOSED HOT MIX ASPHALT SURFACE AT 300 FT INTERVALS ON ALTERNATING SIDES OF THE PAVEMENT AND AS DIRECTED BY THE ENGINEER. THE STATION SYMBOL STAMPS USED SHALL BE FURNISHED BY THE CONTRACTOR. THEY SHALL BE 5 1/2 IN. TALL, OF A DESIGN APPROVED BY THE ENGINEER, AND SHALL REMAIN THE PROPERTY OF THE CONTRACTOR.

PRIOR TO PLACEMENT OF THE FINAL PAVEMENT MARKINGS THE RESIDENT ENGINEER SHALL CONTACT THE BUREAU OF OPERATIONS AND ARRANGE FOR INSPECTION AND APPROVAL OF THE PAVEMENT MARKING LAYOUT.

AFTER A LIFT OF HOT MIX ASPHALT HAS BEEN PLACED, THE LANE SHALL REMAIN CLOSED TO TRAFFIC UNTIL THE NEW MAT HAS COOLED TO 150 DEGREES FAHRENHEIT.

THE CONTRACTOR SHALL NOTIFY THE ENGINEER OF TRAFFIC OPERATIONS 72 HOURS PRIOR TO THE SHUT-DOWN OR CUTTING OF EXISTING DETECTOR LOOPS.

THE CONTRACTOR SHALL COMPLETE ALL PATCHING PRIOR TO THE HOT MIX ASPHALT SURFACE REMOVAL.

THE FURNISHING AND INSTALLATION OF THE 1 1/4 IN. CONDUIT WITH ITS TRENCHING AND BACKFILL FROM THE LOOP SAWCUT TO THE SPLICE POINT SHALL BE INCLUDED IN THE LOOP INSTALLATION UNLESS SHOWN OTHERWISE ON THE PLANS.

THE LOCATION OF THE DETECTOR LOOPS, AS SHOWN ON THE PLANS, MAY BE ADJUSTED TO FIT FIELD CONDITIONS AS DIRECTED BY THE ENGINEER OF TRAFFIC OPERATIONS.

ALL DETECTOR LOOPS SHALL BE INSTALLED PRIOR TO RESURFACING.

THE 6'X6' DETECTOR LOOPS SHALL BE TYPE I AND EACH DETECTOR LOOP SHALL HAVE 4 TURNS OF LOOP WIRE. THE DETECTOR LOOPS SHALL BE INSTALLED IN ACCORDANCE WITH THE APPLICABLE PORTIONS OF SECTION 886 OF THE STANDARD SPECIFICATIONS FOR TRAFFIC CONTROL ITEMS.

COMMITMENTS: NONE

LIST OF STANDARDS

000001-07	STANDARD SYMBOLS, ABBREVIATIONS AND PATTERNS
001001-02	AREAS OF REINFORCEMENT BARS
001006	DECIMAL OF AN INCH AND OF A FOOT
442201-03	CLASS C AND D PATCHES
701101-05	OFF RD OPERATIONS, MULTILANE, 15' (4.5 m) TO 24" (600 mm) FROM PAVEMENT EDGE
701106-02	OFF RD OPERATIONS, MULTILANE, MORE THAN 15' (4.5 m) AWAY
701427-05	LANE CLOSURE, MULTILANE, INTERMITTENT OR MOVING OPER., FOR SPEEDS < 40 MPH
701602-10	URBAN LANE CLOSURE, MULTILANE, 2W WITH BIDIRECTIONAL LEFT TURN LANE
701701-10	URBAN LANE CLOSURE, MULTILANE INTERSECTION
701901-08	TRAFFIC CONTROL DEVICES
780001-05	TYPICAL PAVEMENT MARKINGS
781001-04	TYPICAL APPLICATIONS RAISED REFLECTIVE PAVEMENT MARKERS
886001-01	DETECTOR LOOP INSTALLATIONS
886006-01	TYPICAL LAYOUTS FOR DETECTION LOOPS

MTD CROSSING RESTRICTIONS TABLE

SN & CENTERLINE STATION ROUTE (FAP 821 IL 15)	STRUCTURE SIZE	MTD CROSSING RESTRICTIONS
SN 041-7070 (STA. 586+94.5)	11FT W X 5 FT H	EMPTIED

MODEL: D:\p1\p1.dwg
 FILE NAME: \p1\p1.dwg
 PROJECT: \p1\p1.dwg
 USER: jaylornrd
 DATE: 3/28/2019

USER NAME = jaylornrd	DESIGNED -	REVISED -	STATE OF ILLINOIS DEPARTMENT OF TRANSPORTATION	INDEX OF SHEETS, LIST OF STANDARDS, GENERAL NOTES, AND MTD CROSSING RESTRICTIONS		F.A.P. RTE: 821	SECTION: (13-2-13-13Z)RS-7	COUNTY: JEFFERSON	TOTAL SHEETS: 24	SHEET NO.: 3			
PLOT SCALE = 2 0000' / in	DRAWN -	REVISED -				SCALE: _____	SHEET 3 OF 24 SHEETS	STA. _____ TO STA. _____	ILLINOIS FED. AID PROJECT				
PLOT DATE = 3/28/2019	CHECKED -	REVISED -											
	DATE -	REVISED -											

MIX DESIGN - SURFACE COURSE

LOCATIONS	HOT-MIX ASPHALT SURFACE COURSE
MIXTURE USE(S):	POLYMERIZED HOT-MIX ASPHALT SURFACE COURSE, MIX D, N90
AB/PG:	SBS PG76-22
ABR % (MAX):	SEE SPECIAL PROVISION
DESIGN AIR VOIDS:	4.0%, 90 GYRATION DESIGN
MIXTURE COMPOSITION (GRADATION MIXTURE)	IL-9.5mm
FRICTION AGGREGATE:	D SURFACE
MIXTURE WEIGHT:	112 LBS/SQ YD/IN
QUALITY MANAGEMENT PROGRAM:	QCP
SUBLOT SIZE:	TBD

MIX DESIGN - LEVELING BINDER

LOCATIONS	HOT-MIX ASPHALT LEVELING BINDER
MIXTURE USE(S):	POLYMERIZED HOT-MIX ASPHALT LEVELING BINDER, N90 FINE GRADED
AB/PG:	SBS PG76-22
ABR % (MAX):	SEE SPECIAL PROVISION
DESIGN AIR VOIDS:	4.0%, 30 GYRATION DESIGN
MIXTURE COMPOSITION (GRADATION MIXTURE)	IL-9.5mm FINE GRADED
FRICTION AGGREGATE:	NONE
MIXTURE WEIGHT:	112 LBS/SQ YD/IN
QUALITY MANAGEMENT PROGRAM:	QCP
SUBLOT SIZE:	TBD

MOF: Default
 FILE NAME: p:\highway\road\da\illinois\pwr\pwr\DOT\Documents\DOT_Offices\Districts\Project\131812\7CAD\Output\CAD\Sheet\131812\SMR\Typ_Sch_Ties_Creep\11\mest.dgn

USER NAME = tayford	DESIGNED - _____	REVISED - _____	STATE OF ILLINOIS DEPARTMENT OF TRANSPORTATION	MIX DESIGNS	F.A.P. RTE	SECTION	COUNTY	TOTAL SHEETS	SHEET NO.
PLOT SCALE = 100.0000' / in	DRAWN - _____	REVISED - _____			921	(13-2,13,13Z)RS-7	JEFFERSON	24	4
PLOT DATE = 3/28/2019	CHECKED - _____	REVISED - _____			CONTRACT NO. 78727				
DATE - _____	REVISED - _____	REVISED - _____			SCALE: _____	SHEET 4	OF 24	SHEETS	STA. _____
					ILLINOIS FED. AID PROJECT				

SUMMARY OF QUANTITIES

COUNTY: JEFFERSON
 ROUTE: IL 15
 FUNDING: 80% FEDERAL 20% STATE
 LOCATION: URBAN

CODE NUMBER	ITEM DESCRIPTION	UNIT	TOTAL QUANTITY 0005
40600290	BITUMINOUS MATERIALS (TACK COAT)	POUND	32,857
40600847	POLYMERIZED LEVELING BINDER (MACHINE METHOD), IL-9.5FG, N90	TON	2,045
40600990	TEMPORARY RAMP	SQ YD	893
40603545	POLYMERIZED HOT-MIX ASPHALT SURFACE COURSE, MIX "D", N90	TON	4,090
44000158	HOT-MIX ASPHALT SURFACE REMOVAL, 2 1/4"	SQ YD	48,677
44201827	CLASS D PATCHES, TYPE II, 15 INCH	SQ YD	45
44201831	CLASS D PATCHES, TYPE III, 15 INCH	SQ YD	82
44201833	CLASS D PATCHES, TYPE IV, 15 INCH	SQ YD	631
67000400	ENGINEER'S FIELD OFFICE, TYPE A	CAL MO	4
67100100	MOBILIZATION	L SUM	1
70102632	TRAFFIC CONTROL AND PROTECTION, STANDARD 701602	L SUM	1
70102635	TRAFFIC CONTROL AND PROTECTION, STANDARD 701701	L SUM	1
70107025	CHANGEABLE MESSAGE SIGN	CAL DA	14

REV. - MS

MODR: The path
 FILE NAME: \\p10001\dot\documents\DOT_Offices\Director_9\Projects\1318727\KAD\Drawings\1318727\Drawings\1318727\Drawings\1318727.dgn

USER NAME = g31-gnd	DESIGNED -	REVISED -	STATE OF ILLINOIS DEPARTMENT OF TRANSPORTATION	SUMMARY OF QUANTITIES			F.A.R. RTE	SECTION	COUNTY	TOTAL SHEETS	SHEET NO.
PLOT SCALE = 2.0000 1/4"	DRAWN -	REVISED -		SCALE	SHEET 5	OF 24 SHEETS	STA.	TO STA.	JEFFERSON	24	5
PLOT DATE = 3/28/2019	CHECKED -	REVISED -		CONTRACT NO. 78727							
	DATE -	REVISED -		ILLINOIS FED. AID PROJECT							

SUMMARY OF QUANTITIES - CONT

COUNTY: JEFFERSON
 ROUTE: IL 15
 FUNDING: 80% FEDERAL 20% STATE
 LOCATION: URBAN

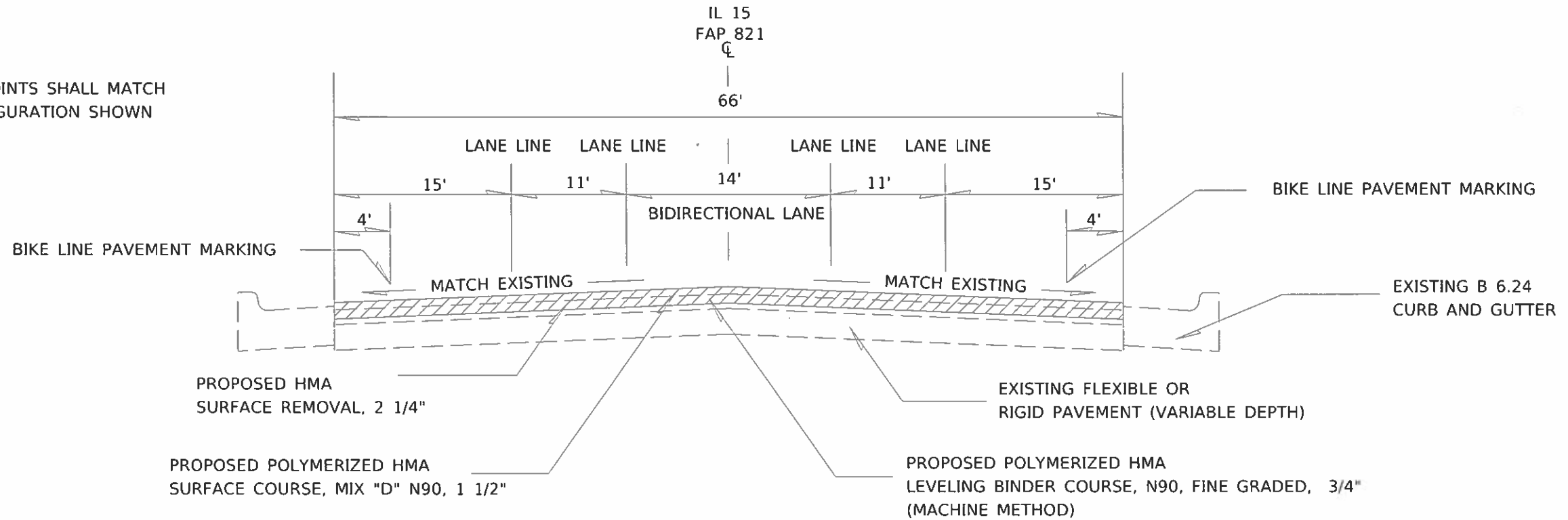
CODE NUMBER	ITEM DESCRIPTION	UNIT	TOTAL QUANTITY 0005
* 88600100	DETECTOR LOOP, TYPE I	FOOT	5,897
89502375	REMOVE EXISTING TRAFFIC SIGNAL EQUIPMENT	EACH	1
X0327980	PAVEMENT MARKING REMOVAL - WATER BLASTING	SQ FT	13,142
Z0033700	LONGITUDINAL JOINT SEALANT	FOOT	27,645
Z0034105	MATERIAL TRANSFER DEVICE	TON	6,135



MODEL: Delwin
 FILE NAME: p:\webroom\del_illinois\pwr\pwr000\Documents\100T_011k\101\Draw_9\Project\13727\CAD\CAD.dwg\CD\accs\1005\...SNA.Cov_Seg_1005.dgn

REV. - MS

LONGITUDINAL PAVEMENT JOINTS SHALL MATCH THE PROPOSED LANE CONFIGURATION SHOWN ON THE TYPICAL SECTIONS



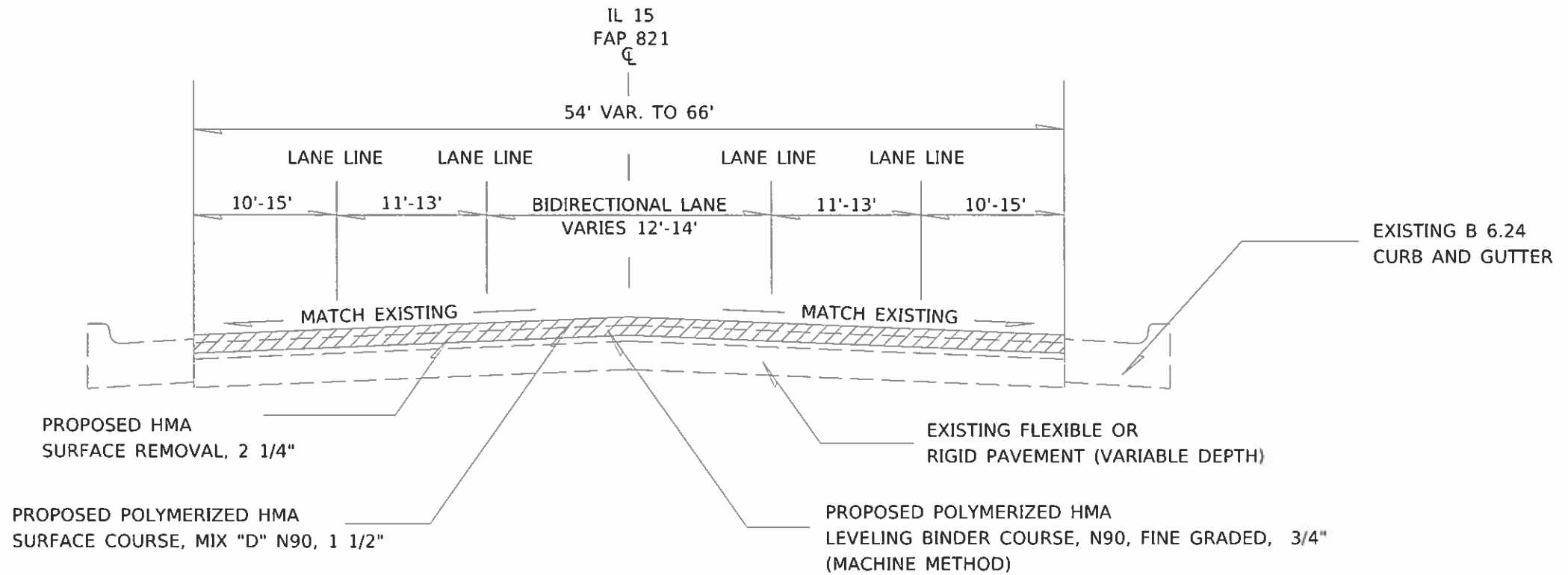
TO BE USED

STA. 543+46 TO STA. 590+26.18

LONGITUDINAL JOINT SEALANT (Z0033700) - SHALL BE APPLIED UNDER THE SURFACE COURSE UNDER EACH LANE LINE

STATION EQUATIONS

- 564+83.45 BK = 564+89.51 AH
- 584+41.68 BK = 584+40.70 AH
- 594+72.11 BK = 594+69.74 AH



TO BE USED

STA. 590+26.18 TO STA. 612+60

LONGITUDINAL JOINT SEALANT (Z0033700) - SHALL BE APPLIED UNDER THE SURFACE COURSE UNDER EACH LANE LINE

MODIFIED BY: [unreadable] FILE NAME: [unreadable]

USER NAME = taylord	DESIGNED -	REVISED -
PLOT SCALE = 20.0000 / in	DRAWN -	REVISED -
PLOT DATE = 5/11/2019	CHECKED -	REVISED -
	DATE -	REVISED -

**STATE OF ILLINOIS
DEPARTMENT OF TRANSPORTATION**

TYPICAL SECTION

SCALE _____ SHEET 8 OF 24 SHEETS STA. 543+46 TO STA. 612+60

F.A.P. RTE.	SECTION	COUNTY	TOTAL SHEETS	SHEET NO.
821	(13-2.13.13ZRS-7)	JEFFERSON	24	8
CONTRACT NO. 78727				
ILLINOIS FED. AID PROJECT				

IL 15 (F.A.P. 821) MAINLINE RESURFACING SCHEDULE

LOCATION STATION TO STATION				LENGTH	ROADWAY WIDTH	HMA SUR. REMOV.	HOT-MIX ASP. SUR. CSE., MIX D N 90	HOT MIX ASPHALT BINDER COURSE, N90	BIT. MAT. (TACK COAT)	TEMPORARY RAMPS
				FOR INFORMATIONAL PURPOSE ONLY		(2 1/4")	(1 1/2")	(3/4")		
				(FT)	(FT)	(SQ YD)	(TON)	(TON)	(LBS)	(SQ YD)
MAINLINE: STA.543+46 TO 612+60										
	543+46.00	TO	543+46.00	0	65	0	0	0	0	68
	543+46.00	TO	564+83.45	2,137	66	15,675	1,317	658	10,580	
	564+89.51	TO	584+41.68	1,952	66	14,316	1,203	601	9,663	
	584+40.70	TO	590+26.18	585	66	4,294	361	180	2,898	
RT	590+26.18	TO	594+72.11	446	30	1,486	125	63	1,003	
LT	590+26.18	TO	591+22.32	96	33	353	30	15	238	
LT	591+22.32	TO	594+74.11	352	30	1,173	99	49	792	
LT	594+74.11	TO	594+74.11	0	27	0	0	0	0	
	594+69.74	TO	604+40.47	971	54	5,824	489	245	3,931	
	604+40.47	TO	606+94.33	254	59	1,664	140	70	1,123	
	606+94.33	TO	609+99.25	305	64	2,168	182	91	1,464	
LT	608+16.00	TO	608+64.00	48	5	27	2	1	18	
	609+99.25	TO	612+40.00	241	59	1,578	133	66	1,065	
	612+40.00	TO	612+60.00	20	54	120	10	5	81	
	612+60.00	TO	612+60.00	0	54	0	0	0	0	55
MAINLINE TOTALS						48,677	4,090	2,045	32,857	123

MODEL - Default
 FILE - Model - 3044104000.dwg
 PROJECT - 821
 SHEET - 9
 DATE - 4/5/2019

USER NAME = poesi	DESIGNED -	REVISED -
	DRAWN -	REVISED -
PLOT SCALE = 100.0000' / in.	CHECKED -	REVISED -
PLOT DATE = 4/5/2019	DATE -	REVISED -

**STATE OF ILLINOIS
DEPARTMENT OF TRANSPORTATION**

**RESURFACING
SCHEDULE**

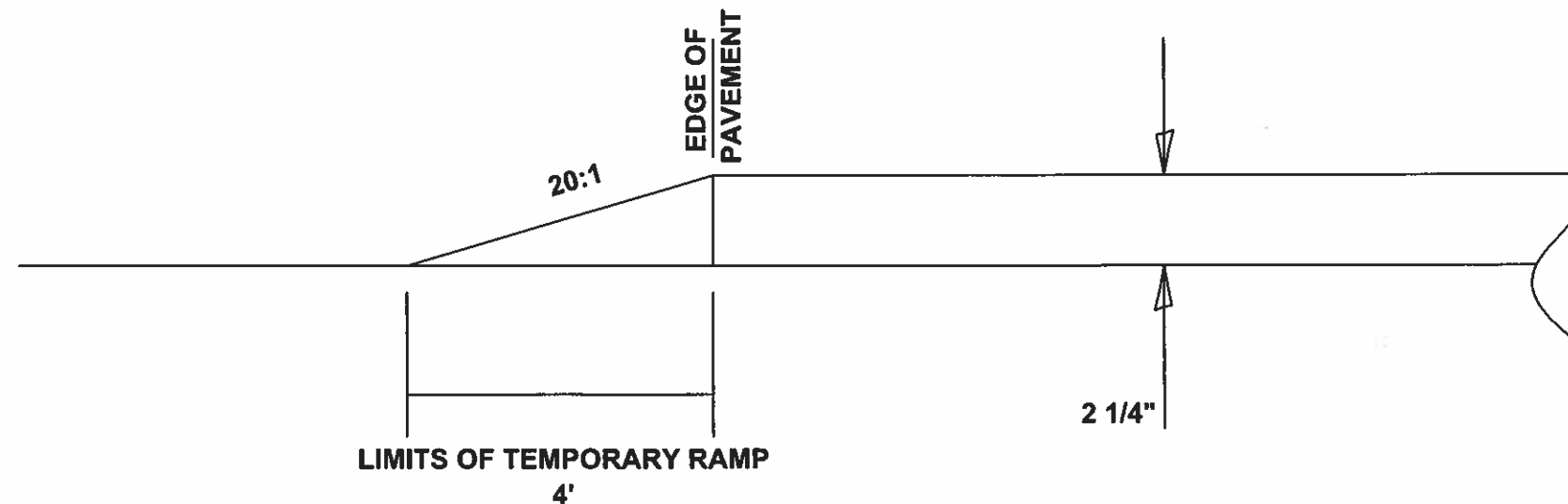
SCALE: SHEET 9 OF 24 SHEETS STA. TO STA.

F.A.P. RTE.	SECTION	COUNTY	TOTAL SHEETS	SHEET NO.
821	(13-2,13,13Z)RS-7	JEFFERSON	24	9
CONTRACT NO. 78727				
		ILLINOIS	FED. AID PROJECT	

TEMPORARY RAMPS FOR SIDEROADS

LOCATION			LENGTH	TEMPORARY RAMP
IL 15 (FAP 821)			FOOT	SQ YD
STATION	LT/RT	INTERSECTING STREET		
557+42	LT	42ND ST	160	71
557+42	RT	42ND ST	160	71
562+13	LT	DAVIS AVE	59	26
567+20	LT	CROWN VIEW	80	36
572+78	LT	CROWN VIEW	70	31
572+78	RT	CROSSROADS PLAZA	99	44
574+50	LT	SUNSET DR	65	29
582+89	LT	34TH ST	104	46
582+89	RT	34TH ST	157	70
585+53	LT	33RD ST	63	28
589+90	RT	32ND ST	60	27
590+75	LT	32ND ST	60	27
595+23	LT	31ST ST	28	12
598+04	LT	30TH ST	166	74
598+04	RT	30TH ST	118	52
601+88	LT	29TH ST	55	24
604+06	RT	28TH ST	56	25
608+40	LT	27TH ST	62	28
608+51	RT	27TH ST	110	49
TOTALS				770

TEMPORARY RAMPS FOR SIDEROADS DETAIL



MODIFIED: D:\civ\p\19\autocad\illinois.gov\FW\DOT\Documents\1\DOT_Docs\1518727\CA\Drawings\821\821_S1R1_Typ_Sch_Ten_Crossp\821_S1R1.dwg
 FILE NAME: p:\19\autocad\illinois.gov\FW\DOT\Documents\1\DOT_Docs\1518727\CA\Drawings\821\821_S1R1_Typ_Sch_Ten_Crossp\821_S1R1.dwg

USER NAME = taylornd PLOT SCALE = 100.0000 / in. PLOT DATE = 3/28/2019	DESIGNED - _____ DRAWN - _____ CHECKED - _____ DATE - _____	REVISED - _____ REVISED - _____ REVISED - _____ REVISED - _____	STATE OF ILLINOIS DEPARTMENT OF TRANSPORTATION	TEMPORARY RAMP SIDEROAD SCHEDULE	F.A.P. RTE. 821 SECTION 113-2.13.13ZRS-7 COUNTY JEFFERSON TOTAL SHEETS 24 SHEET NO. 10	CONTRACT NO. 78727 ILLINOIS FED. AID PROJECT
--	--	--	---	---	--	---

PAVEMENT MARKING SCHEDULE - CONT

LOCATION STATION TO STATION	STATION LT/RT	LENGTH	THERMOPLASTIC PAVEMENT MARKING						LETTERS AND SYMBOLS SQ FT	REMARKS			
			LINE 4"			LINE 12"	LINE 24"						
			YELLOW		SKIP DASH	WHITE		YELLOW			WHITE		
			DBL SOLID FOOT	SOLID FOOT		SOLID FOOT	SKIP DASH FOOT					FOOT	FOOT
ILLINOIS 15													
585+89 TO 594+72	LT	883		883	221					BIDIRECTIONAL LEFT TURN LANE			
594+70 TO 594+93	LT	23		23	6					BIDIRECTIONAL LEFT TURN LANE			
586+09 TO 594+72	RT	863		863	216					BIDIRECTIONAL LEFT TURN LANE			
594+70 TO 595+12	RT	42		42	11					BIDIRECTIONAL LEFT TURN LANE			
587+61 TO 587+61								17.6		TWO WAY LEFT TURN ARROWS			
590+00 TO 590+00								17.6		TWO WAY LEFT TURN ARROWS			
592+77 TO 592+77								17.6		TWO WAY LEFT TURN ARROWS			
594+54 TO 594+54								17.6		TWO WAY LEFT TURN ARROWS			
594+93 TO 597+68	LT	275	550							DOUBLE YELLOW TRANSITION AND TURN LN			
595+12 TO 596+47	RT	140	280							DOUBLE YELLOW TRANSITION			
594+93 TO 596+47							70			SOLID YELLOW TRANSITION LAYOUTS			
596+47 TO 597+68	RT	121			121					EB LEFT TURN LANE LINE			
596+52 TO 596+52								8.8		LEFT TURN ARROW			
597+03 TO 597+03								8.8		LEFT TURN ARROW			
597+56 TO 597+56								8.8		LEFT TURN ARROW			
597+68 TO 597+68									40	EB STOP BAR			
597+72 TO 597+72					144					CROSSWALK 4" WHITE LINES ON SKEW			
598+75 TO 598+75					114					CROSSWALK 4" WHITE LINES ON SKEW			
598+79 TO 598+79									40	WB STOP BAR			
598+79 TO 608+15	LT	936								WB LANE LINE			
598+79 TO 608+15	RT	936								EB LANE LINE			
598+79 TO 600+00	LT	121			121					WB LEFT TURN LANE LINE			
598+79 TO 601+71	RT	292	584							DOUBLE YELLOW TRANSITION AND TURN LN			
598+91 TO 598+91								8.8		LEFT TURN ARROW			
599+43 TO 599+43								8.8		LEFT TURN ARROW			
599+93 TO 599+93								8.8		LEFT TURN ARROW			
600+11 TO 601+47	RT	140	280							DOUBLE YELLOW TRANSITION			
600+11 TO 601+71							71			SOLID YELLOW TRANSITION LAYOUTS			
601+47 TO 605+20	LT	373		373	93					BIDIRECTIONAL LEFT TURN LANE			
601+71 TO 605+38	RT	367		367	92					BIDIRECTIONAL LEFT TURN LANE			
602+05 TO 602+05								17.6		TWO WAY LEFT TURN ARROWS			
604+60 TO 604+60								17.6		TWO WAY LEFT TURN ARROWS			
605+20 TO 608+15	LT	295	590							DOUBLE YELLOW TRANSITION AND TURN LN			
605+38 TO 606+73	RT	134	268							DOUBLE YELLOW TRANSITION			
605+20 TO 606+73							70			SOLID YELLOW TRANSITION LAYOUTS			
606+90 TO 608+15	RT	125			125					EB LEFT TURN LANE LINE			
608+15 TO 608+15									40	EB STOP BAR			
606+95 TO 606+95								8.8		LEFT TURN ARROW			
607+45 TO 607+45								8.8		LEFT TURN ARROW			
608+04 TO 608+04								8.8		LEFT TURN ARROW			
608+76 TO 608+76										CROSSWALK 4" WHITE LINES ON SKEW			
608+80 TO 608+80									40	WB STOP BAR			
608+80 TO 612+60	LT	380								WB LANE LINE			
608+80 TO 612+60	RT	380								EB LANE LINE			
608+80 TO 610+06	LT	126			126					WB LEFT TURN LANE LINE			
SUBTOTALS			2552	2552	638	751	658	211	160	185			
TOTALS								211	160	185			

MODIFIED: Derbort
 FILE NAME: \\p1anzen\cor_illinois\p1anzen\Documents\DOT\Office\Drawings\Illinois\151822\CA\Drawings\151822\151822_S18_Typ_Sch_Tier_Cropall\Illinois.sgm

USER NAME = taylormd	DESIGNED - _____	REVISED - _____	STATE OF ILLINOIS DEPARTMENT OF TRANSPORTATION	PAVEMENT MARKING SCHEDULE - CONT	F.A.P. RTE	SECTION	COUNTY	TOTAL SHEETS	SHEET NO.	
PLOT SCALE = 100.0000' / in.	DRAWN - _____	REVISED - _____			821	(13-2,13,132)R5-7	JEFFERSON	24	13	
PLOT DATE = 3/28/2019	CHECKED - _____	REVISED - _____			SCALE _____ SHEET 13 OF 24 SHEETS STA _____ TO STA _____		CONTRACT NO. 78727			
	DATE - _____	REVISED - _____			ILLINOIS FED. AID PROJECT					

PAVEMENT MARKING SCHEDULE - CONT

LOCATION STATION TO STATION	STATION LT/RT	LENGTH	THERMOPLASTIC PAVEMENT MARKING							LETTERS AND SYMBOLS SQ FT	REMARKS
			LINE 4"					LINE 12"	LINE 24"		
			YELLOW			WHITE		YELLOW	WHITE		
			DBL SOLID FOOT	SOLID FOOT	SKIP DASH FOOT	SOLID FOOT	SKIP DASH FOOT				
ILLINOIS 15											
608+80 TO 611+79	RT	299	598								DOUBLE YELLOW TRANSITION AND TURN LN
608+92 TO 608+92										8.8	LEFT TURN ARROW
609+44 TO 609+44										8.8	LEFT TURN ARROW
609+95 TO 609+95										8.8	LEFT TURN ARROW
610+17 TO 611+56		139	278								DOUBLE YELLOW TRANSITION
610+17 TO 611+79								76			SOLID YELLOW TRANSITION LAYOUTS
611+56 TO 612+60	LT	104		104	26						BIDIRECTIONAL LEFT TURN LANE
611+79 TO 612+60	RT	81		81	20						BIDIRECTIONAL LEFT TURN LANE
612+52 TO 612+52										17.6	TWO WAY LEFT TURN ARROWS
543+46 TO 556+75	LT	1329				1329					SOLID WHITE LINE - FOR BIKE LANE
543+46 TO 556+55	RT	1309				1309					SOLID WHITE LINE - FOR BIKE LANE
543+71 TO 543+71	LT									11.2	BIKE LANE W ARROW SYMBOL
544+46 TO 544+46	RT									11.2	BIKE LANE W ARROW SYMBOL
551+12 TO 551+12	RT									11.2	BIKE LANE W ARROW SYMBOL
552+28 TO 552+28	LT									11.2	BIKE LANE W ARROW SYMBOL
556+00 TO 556+00	RT									11.2	BIKE LANE W ARROW SYMBOL
556+58 TO 556+58	LT									11.2	BIKE LANE W ARROW SYMBOL
558+39 TO 566+80	LT	841				841					SOLID WHITE LINE - FOR BIKE LANE
558+23 TO 559+30	RT	107				107					SOLID WHITE LINE - FOR BIKE LANE
559+30 TO 561+20	RT	190					95				2 X (SOLID WHITE SKIP DASH) 3' STRIPE 9' SPACING
561+20 TO 561+79	RT	59				118					2 X SOLID WHITE LINE -FOR BIKE LANE
562+58 TO 566+74	RT	416				416					SOLID WHITE LINE - FOR BIKE LANE
558+35 TO 558+35	RT									11.2	BIKE LANE W ARROW SYMBOL
558+53 TO 558+53	LT									11.2	BIKE LANE W ARROW SYMBOL
559+26 TO 559+23	RT									11.2	BIKE LANE W ARROW SYMBOL
561+50 TO 561+50	RT									11.2	BIKE LANE W ARROW SYMBOL
561+80 TO 561+80	LT									11.2	BIKE LANE W ARROW SYMBOL
562+76 TO 562+76	RT									11.2	BIKE LANE W ARROW SYMBOL
566+22 TO 566+22	RT									11.2	BIKE LANE W ARROW SYMBOL
566+64 TO 566+64	LT									11.2	BIKE LANE W ARROW SYMBOL
567+68 TO 582+34	LT	1466				1466					SOLID WHITE LINE - FOR BIKE LANE
567+91 TO 582+00	RT	1409				1409					SOLID WHITE LINE - FOR BIKE LANE
568+09 TO 568+09	LT									11.2	BIKE LANE W ARROW SYMBOL
568+13 TO 568+13	RT									11.2	BIKE LANE W ARROW SYMBOL
572+26 TO 572+26	LT									11.2	BIKE LANE W ARROW SYMBOL
573+25 TO 573+25	RT									11.2	BIKE LANE W ARROW SYMBOL
581+67 TO 581+67	RT									11.2	BIKE LANE W ARROW SYMBOL
582+16 TO 582+16	LT									11.2	BIKE LANE W ARROW SYMBOL
583+48 TO 586+16	LT	270				270					SOLID WHITE -FOR BIKE LANE
583+94 TO 589+58	RT	564				564					SOLID WHITE -FOR BIKE LANE
583+91 TO 583+91	LT									11.2	BIKE LANE W ARROW SYMBOL
584+20 TO 584+20	RT									11.2	BIKE LANE W ARROW SYMBOL
586+05 TO 586+05	LT									11.2	BIKE LANE W ARROW SYMBOL
588+19 TO 588+19	RT									11.2	BIKE LANE W ARROW SYMBOL
SUBTOTALS			876	185	46	7829	95	76	0	313	
TOTALS					9031			76	0	313	

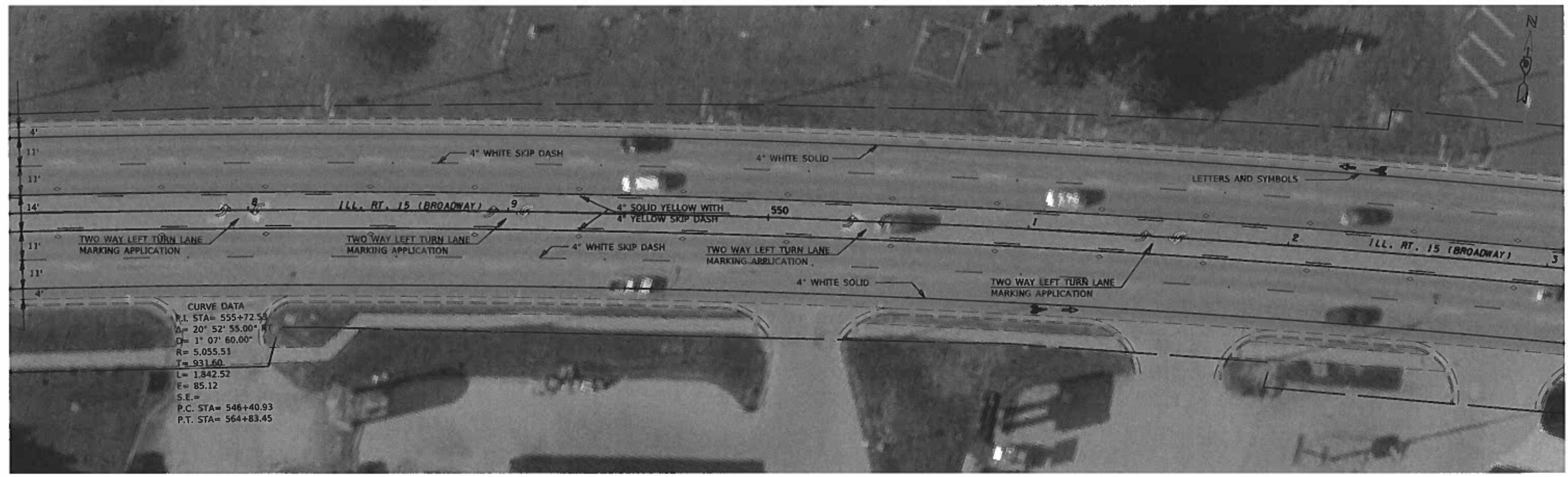
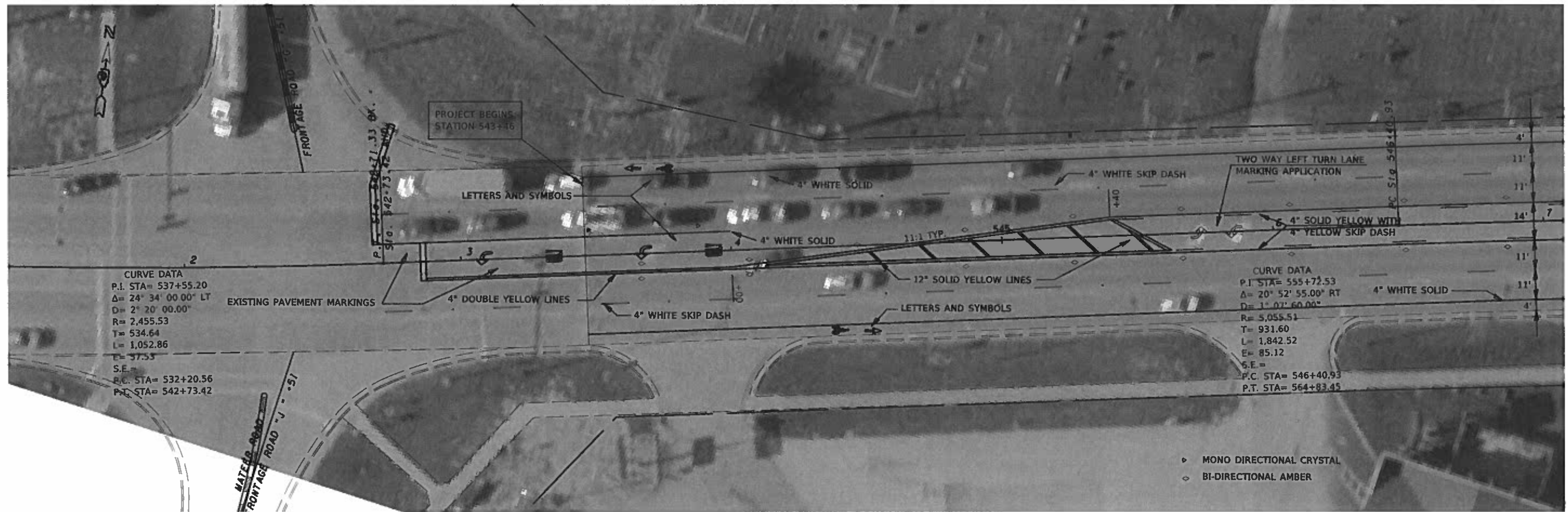
MDPF1: The built FILE NAME and Yearname will Illinois.gov 2019/03/20 Document: 1503 Office: Bureau 9 Bureau: 151872724:0:Data:CAD:Items:10928272:Sheet:14.dgn

DETECTOR LOOP SCHEDULE

LOCATION STATION TO STATION	EOP TO LOOP	BETWEEN LOOPS AND/OR LENGTH OF LOOP RUN	LOOP AMOUNT	DETECTOR LOOP, TYPE I	REMARKS
	FOOT	FOOT	FOOT	FOOT	
IL 15 WESTBOUND LANES					
545+26	4	7	48	59	2 - 6'X6'
IL 15 EASTBOUND LANES					
554+53	4	8	48	60	2 - 6'X6'
556+93		152	312	464	(6) - 20'x6'
IL 15 WESTBOUND LANES					
557+82		144	312	456	(6) - 20'x6'
560+19	4	7	48	59	2 - 6'X6'
IL 15 EASTBOUND LANES					
564+33	4	7	48	59	2 - 6'X6'
566+43		237	312	549	(6) - 20'x6'
IL 15 WESTBOUND LANES					
567+60		220	312	532	(6) - 20'x6'
570+04	4	7	48	59	2 - 6'X6'
IL 15 EASTBOUND LANES					
580+25	4	7	48	59	2 - 6'X6'
582+50		236	312	548	(6) - 20'x6'
IL 15 WESTBOUND LANES					
583+30		187	312	499	(6) - 20'x6'
585+62	4	7	48	59	2 - 6'X6'
IL 15 EASTBOUND LANES					
595+55		27	48	75	2 - 6'X6'
597+65		240	312	552	(6) - 20'x6'
IL 15 WESTBOUND LANES					
598+83		210	312	522	(6) - 20'x6'
601+65		58	48	106	2 - 6'X6'
IL 15 EASTBOUND LANES					
605+88	4	7	48	59	2 - 6'X6'
608+15		208	312	520	(6) - 20'x6'
IL 15 WESTBOUND LANES					
608+80		230	312	542	(6) - 20'x6'
611+76	4	7	48	59	2 - 6'X6'
TOTAL				5897	

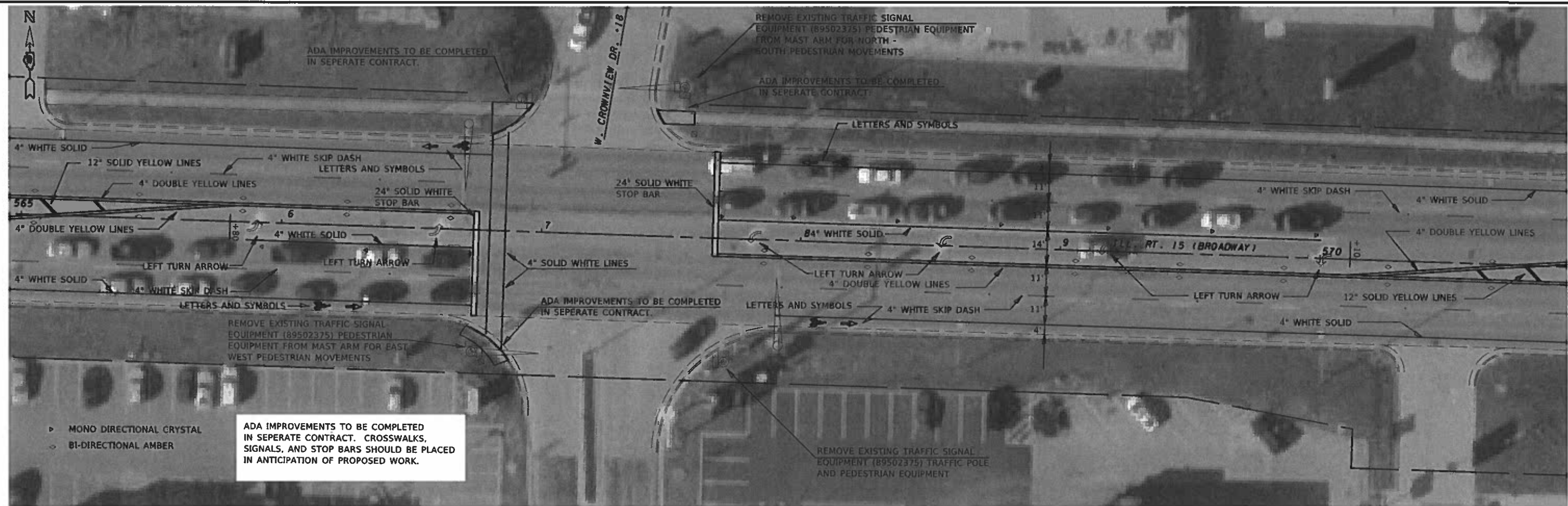
MODIFY: D:\a\it... FILE NAME: ... ILLINOIS DEPARTMENT OF TRANSPORTATION

USER NAME = taylornd	DESIGNED - _____	REVISED - _____	STATE OF ILLINOIS DEPARTMENT OF TRANSPORTATION	DETECTOR LOOP SCHEDULE	F.A.P. RTE. = 821	SECTION = (13-2.13.13Z)RS-7	COUNTY = JEFFERSON	TOTAL SHEETS = 24	SHEET NO. = 16		
PLOT SCALE = 100.0000' / in.	CHECKED - _____	REVISED - _____			SCALE: _____	SHEET 16 OF 24 SHEETS	STA. _____	TO STA. _____	CONTRACT NO. 78727		
PLOT DATE = 3/28/2019	DATE - _____	REVISED - _____			ILLINOIS FED. AID PROJECT						

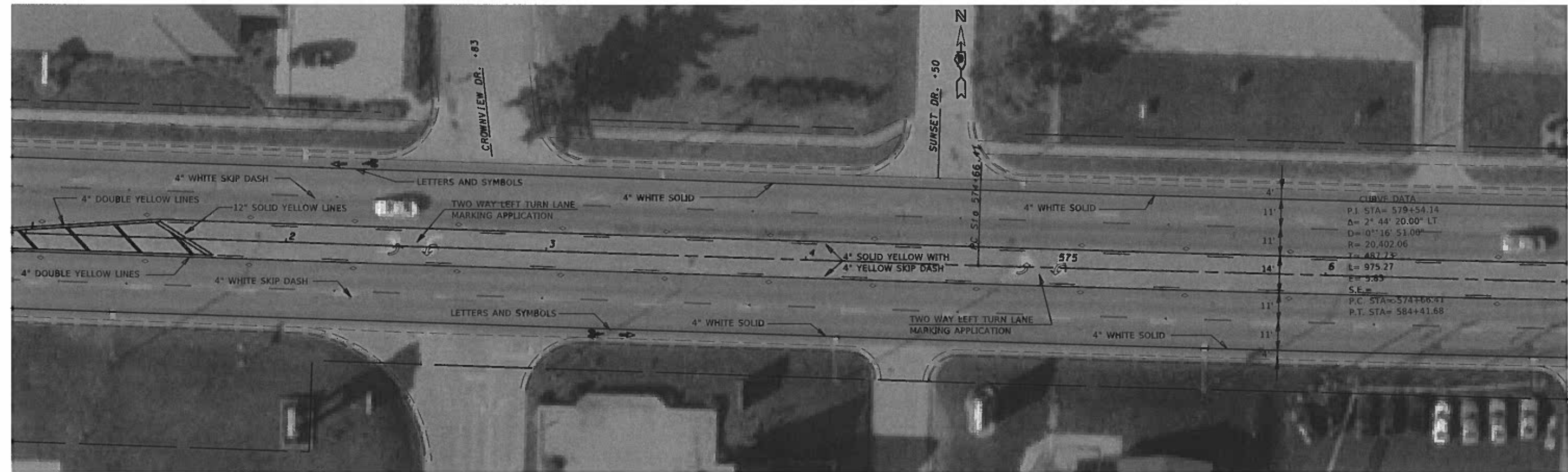


MODFL: Default
 FILE NAME: C:\Program Files\Autodesk\MapGuide\Projects\13-2-13\132JRS-7\132JRS-7.dwg

USER NAME = taylornd	DESIGNED =	REVISED =	STATE OF ILLINOIS DEPARTMENT OF TRANSPORTATION	PAVEMENT MARKING		F.A.P. RTE = 821	SECTION = (13-2.13.132JRS-7)	COUNTY = JEFFERSON	TOTAL SHEETS = 24	SHEET NO. = 17			
PLOT SCALE = 40.0000' / in	DRAWN =	REVISED =				SCALE: _____ SHEET 17 OF 24 SHEETS STA _____ TO STA _____		CONTRACT NO. 78727					
PLOT DATE = 4/30/2019	CHECKED =	REVISED =				ILLINOIS FED. AID PROJECT							
DATE =	DATE =	DATE =											



ADA IMPROVEMENTS TO BE COMPLETED IN SEPERATE CONTRACT. CROSSWALKS, SIGNALS, AND STOP BARS SHOULD BE PLACED IN ANTICIPATION OF PROPOSED WORK.



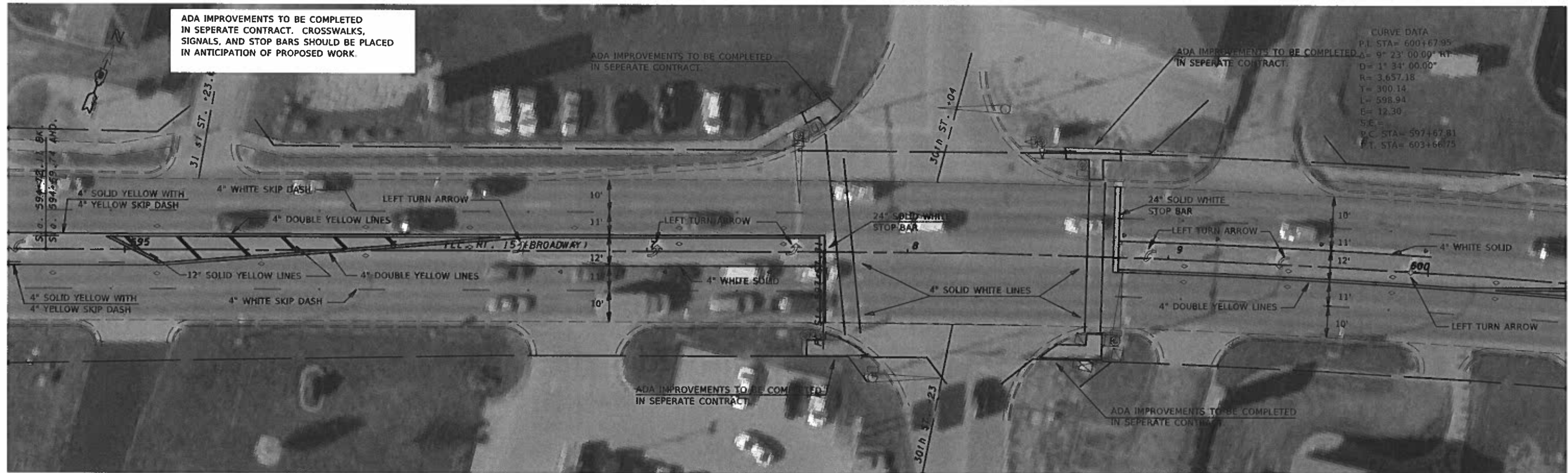
CURVE DATA

P.I. STA	= 579+54.14
Δ	= 2° 44' 20.00" LT
D	= 0° 16' 51.00"
R	= 20,402.06
T	= 487.72'
L	= 975.27'
E	= 5.83'
S.E.	=
P.C. STA	= 574+66.41
P.T. STA	= 584+41.68

MODEL: Detail; FILE NAME: PavementMarking.dwg; PLOT DATE: 4/30/2019; USER: jayland; PROJECT: 13-2.13.132(RS-7); COUNTY: JEFFERSON; CONTRACT NO. 78727

USER NAME = jayland PLOT SCALE = 40 0000' / in PLOT DATE = 4/30/2019	DESIGNED - DRAWN - CHECKED - DATE -	REVISED - REVISED - REVISED - REVISED -	STATE OF ILLINOIS DEPARTMENT OF TRANSPORTATION	PAVEMENT MARKING SCALE _____ SHEET 19 OF 24 SHEETS STA. _____ TO STA. _____	<table border="1"> <tr> <th>F.A.P. RTE</th> <th>SECTION</th> <th>COUNTY</th> <th>TOTAL SHEETS</th> <th>SHEET NO.</th> </tr> <tr> <td>821</td> <td>(13-2.13.132)RS-7</td> <td>JEFFERSON</td> <td>24</td> <td>19</td> </tr> </table>	F.A.P. RTE	SECTION	COUNTY	TOTAL SHEETS	SHEET NO.	821	(13-2.13.132)RS-7	JEFFERSON	24	19
F.A.P. RTE	SECTION	COUNTY	TOTAL SHEETS	SHEET NO.											
821	(13-2.13.132)RS-7	JEFFERSON	24	19											

ILLINOIS FED. AID PROJECT



MODEL: D:\cadd\pav\pavm\pavm.dwg
 FILE NAME: pavm.dwg
 PLOT DATE: 11/20/19
 PLOT SCALE: 1/4" = 100'-0"
 PLOT DATE: 11/20/19

USER NAME = layl@nd	DESIGNED -	REVISED -
PLOT SCALE = 1/4" = 100'-0"	DRAWN -	REVISED -
PLOT DATE = 11/20/19	CHECKED -	REVISED -
	DATE -	REVISED -

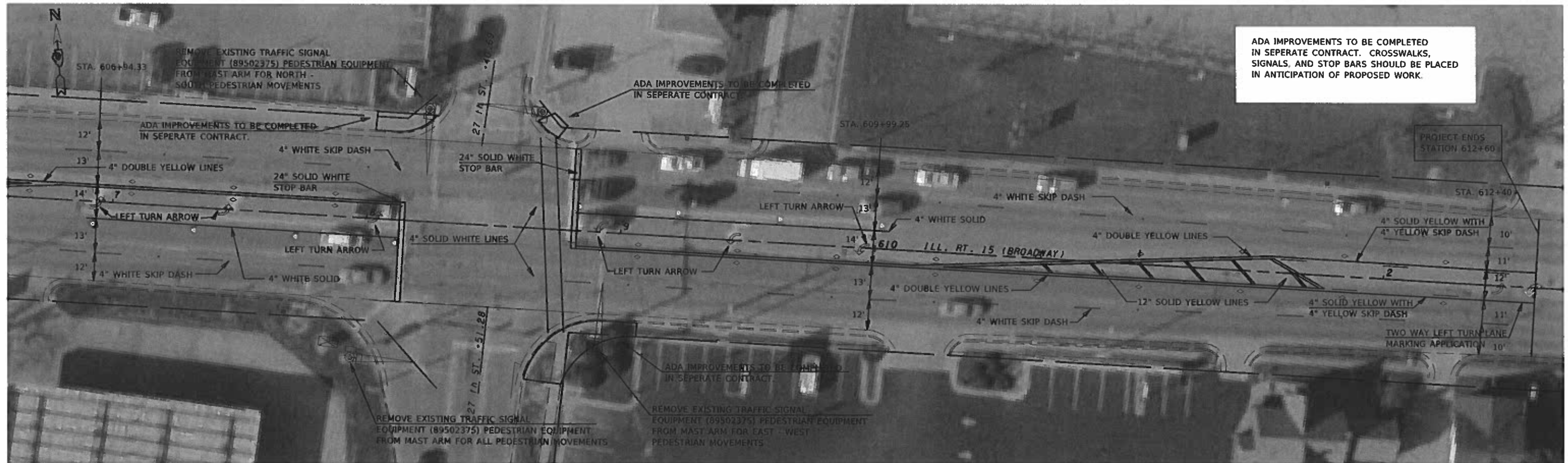
**STATE OF ILLINOIS
 DEPARTMENT OF TRANSPORTATION**

PAVEMENT MARKING

SCALE: SHEET 21 OF 24 SHEETS STA. TO STA.

F.A.P. RTE	SECTION	COUNTY	TOTAL SHEETS	SHEET NO.
821	(13-2.13.13Z)RS-7	JEFFERSON	24	21
CONTRACT NO. 78727				

ILLINOIS FED. AID PROJECT



ADA IMPROVEMENTS TO BE COMPLETED IN SEPERATE CONTRACT. CROSSWALKS, SIGNALS, AND STOP BARS SHOULD BE PLACED IN ANTICIPATION OF PROPOSED WORK.

M:\PROJECTS\2019\78727\Drawings\78727-13-132\78727-13-132-SHG-Retry-Details.dwg
 PLOT DATE = 4/30/2019
 USER NAME = taylormj
 DESIGNED -
 DRAWN -
 CHECKED -
 DATE -
 REVISED -
 REVISED -
 REVISED -
 REVISED -
 STATE OF ILLINOIS
 DEPARTMENT OF TRANSPORTATION
 SCALE: SHEET 22 OF 24 SHEETS STA. TO STA.
 F.A.P. RTE. SECTION COUNTY TOTAL SHEETS SHEET NO.
 821 (13-2.13.132)RS-7 JEFFERSON 24 22
 CONTRACT NO. 78727
 ILLINOIS FED. AID PROJECT

USER NAME = taylormj	DESIGNED -	REVISED -
PLOT SCALE = 40.0000' / in	DRAWN -	REVISED -
PLOT DATE = 4/30/2019	CHECKED -	REVISED -
	DATE -	REVISED -

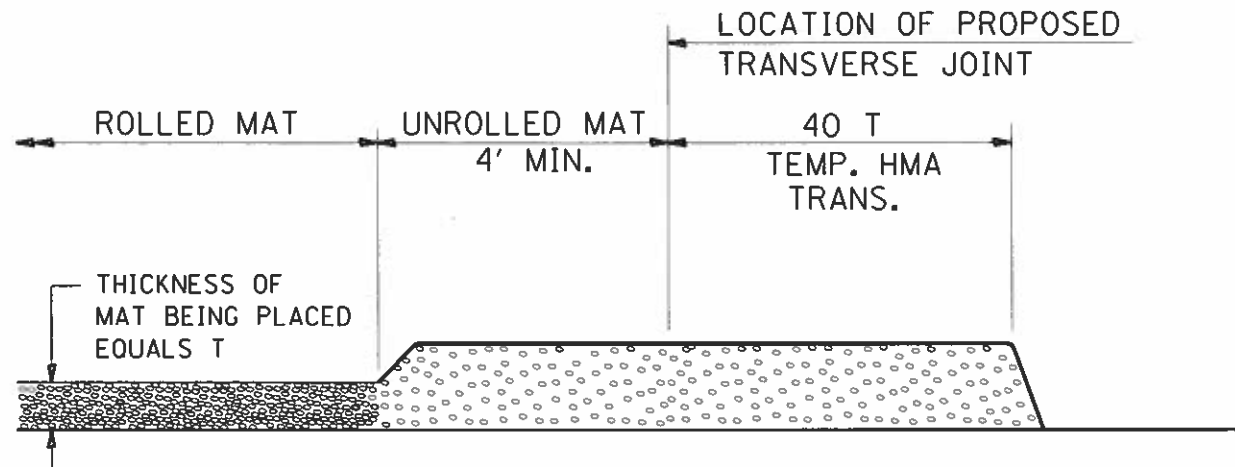
**STATE OF ILLINOIS
DEPARTMENT OF TRANSPORTATION**

PAVEMENT MARKING

SCALE: SHEET 22 OF 24 SHEETS STA. TO STA.

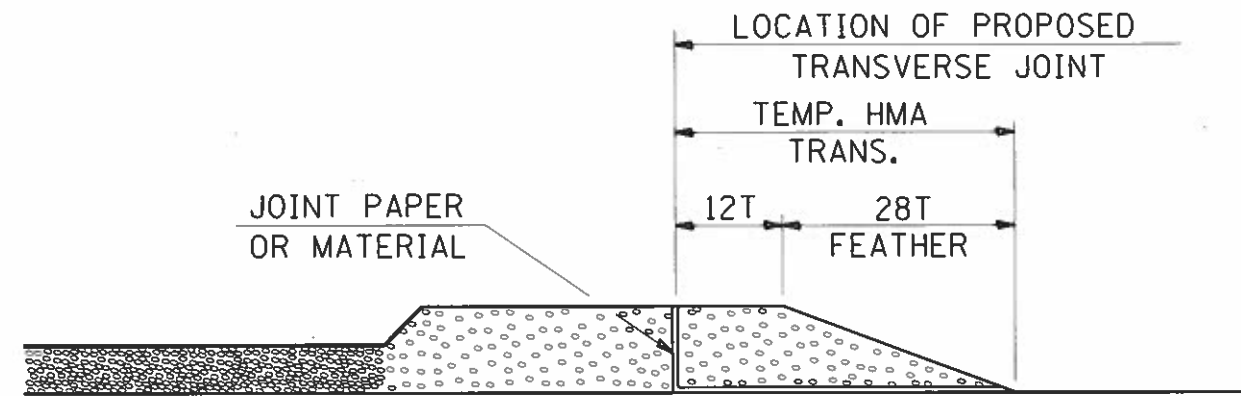
F.A.P. RTE.	SECTION	COUNTY	TOTAL SHEETS	SHEET NO.
821	(13-2.13.132)RS-7	JEFFERSON	24	22
CONTRACT NO. 78727				
ILLINOIS FED. AID PROJECT				

TEMPORARY HOT-MIX ASPHALT TRANSITIONS



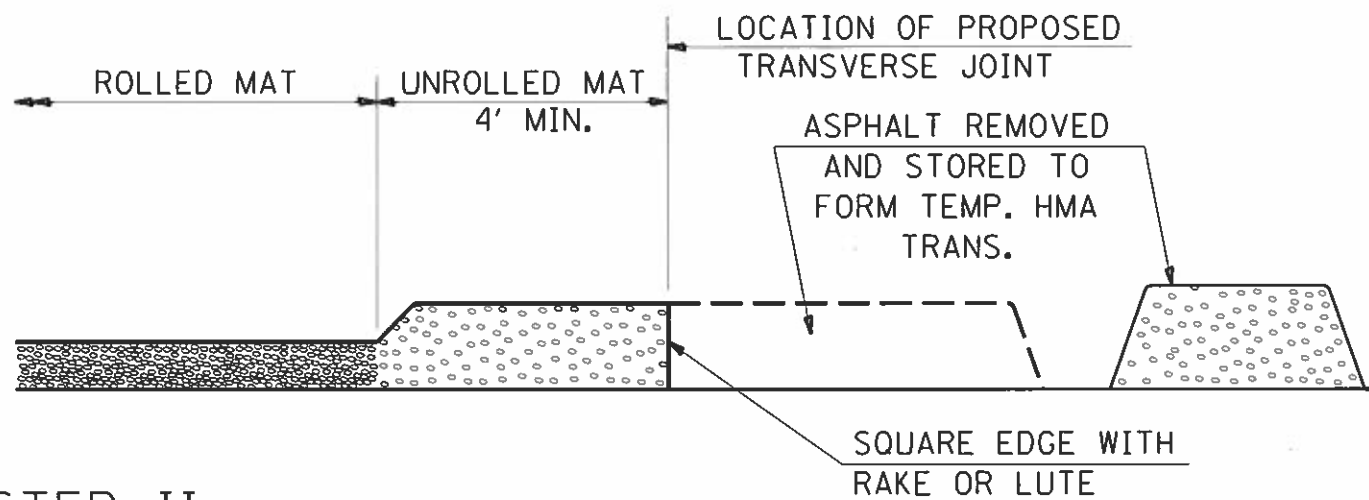
STEP I

1. PLACE HOT-MIX ASPHALT MAT, LENGTH 40 TIMES THE THICKNESS OF THE MAT BEING PLACED PAST THE PROPOSED TRANSVERSE JOINT LOCATION USING NORMAL OPERATING PROCEDURES.
2. EXTREME CARE SHOULD BE TAKEN TO MAINTAIN ENOUGH MATERIAL IN FRONT OF THE SCREED TO MAINTAIN REQUIRED PAVING DEPTH.



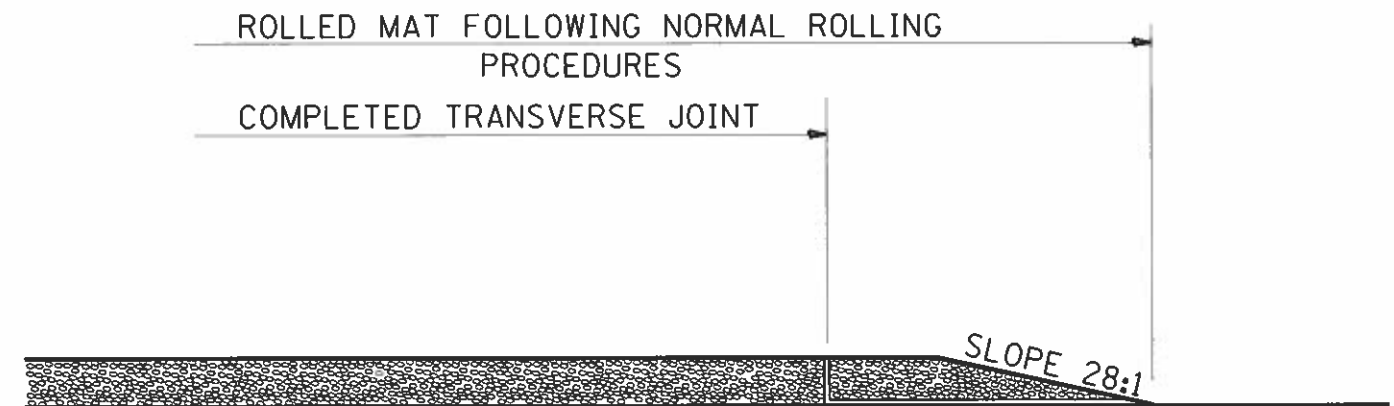
STEP III

1. JOINT PAPER OR OTHER PRESELECTED JOINT MATERIAL IS THEN PLACED IN THE CLEARED AREA AND THE EXCESS ASPHALT USED TO HAND FORM A TRANSITION TO THE DIMENSIONS SHOWN ABOVE.
2. NOTE THAT IN CONSTRUCTING THE TRANSITION, THE MAT DEPTH IS CONTINUED AS PART OF THE TRANSITION BEFORE FORMING THE FEATHER.



STEP II

1. MOVE THE PAVER OUT OF THE WAY AND REMOVE THE ASPHALT FROM THE AREA OF THE PROPOSED TEMPORARY HOT-MIX ASPHALT TRANSITION.
2. SQUARE UP THE END OF THE MAT WITH A RAKE OR LUTE.
3. NOTE THAT THE MAT WITHIN 4' OF THE END OF JOINT IS NOT TO BE ROLLED AT THIS TIME.



STEP IV

1. COMPLETE TEMPORARY TRANSITION BY ROLLING.
2. TO RESUME PAVING, AT THE JOINT, REMOVE TEMPORARY TRANSITION AND DISPOSE OF THE MATERIAL ACCORDING TO ART. 202.03 OF THE STD. SPECS. (COST INCLUDED IN THE CONTRACT).
3. CONSTRUCTING THE TEMPORARY TRANSITIONS WILL NOT BE PAID FOR SEPARATELY IN ACCORDANCE WITH ARTICLE 406.14 OF THE STANDARD SPECIFICATIONS.

STD. 9-26

REVISIONS

REDRAWN	2-15-89
REVISED	8-16-94
REVISED	01-09-07
RESIZED	05-8-08
REVISED	05-16-13

MODPL - Default
 FILE NAME pm:\p\blucom\del.illinois.gov\PWINDOT\Documents\DOT_Offices\blucom\9\Projects\132\132\RS-7\SHG-Rdwy Det.13.dgn

USER NAME = taylormd	DESIGNED -	REVISED -
PLOT SCALE = 75.0000' = 1" = 150.0000'	DRAWN -	REVISED -
PLOT DATE = 3/28/2019	CHECKED -	REVISED -
	DATE -	REVISED -

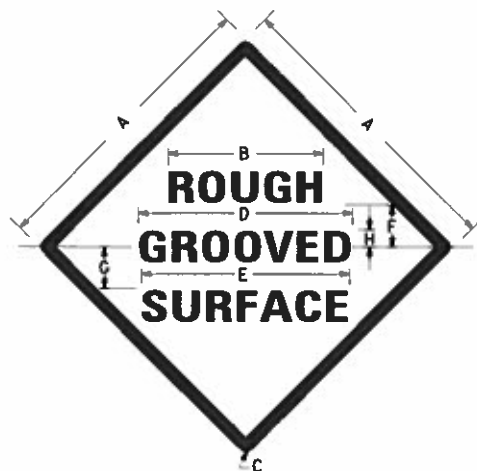
STATE OF ILLINOIS
DEPARTMENT OF TRANSPORTATION

PAVEMENT DETAILS

SCALE: N.T.S. SHEET 23 OF 24 SHEETS STA. TO STA.

F.A.P. RTE.	SECTION	COUNTY	TOTAL SHEETS	SHEET NO.
871	(13-2.13.132)RS-7	JEFFERSON	24	23
ILLINOIS FED. AID PROJECT			CONTRACT NO. 78727	

ILLINOIS STANDARD



COLORS:

LEGEND AND BORDER- BLACK NON-REFLECTORIZED
 BACKGROUND- ORANGE REFLECTORIZED

SIGN SIZE	DIMENSIONS							
	A	B	C	D	E	F	G	H
48X48	48.0	24.1	3.0	34.0	33.0	6.0	13.0	3.5

SIGN SIZE	SERIES LINES			MARGIN	BORDER	BLANK STD.
	1	2	3			
48X48	7C	7C	7C	0.8	1.2	B4-48D

ALL DIMENSIONS IN INCHES

NOTES:

PRIOR TO ALLOWING TRAFFIC ON ANY PORTION OF THE ROADWAY THAT HAS BEEN COLDMILLED, THE CONTRACTOR SHALL HAVE ERECTED "ROUGH GROOVED SURFACE" SIGNS THAT CONFORM TO THE ABOVE DETAILS. A MINIMUM OF ONE SIGN AT EACH END OF THE IMPROVEMENT WILL BE REQUIRED. THE CONTRACTOR SHALL MAINTAIN THE "ROUGH GROOVED SURFACE" SIGNS UNTIL THE COLDMILLED SURFACE IS COVERED WITH LEVELING BINDER OR SURFACE COURSE.

IF AT ANY TIME THE SIGNS ARE IN PLACE BUT NOT APPLICABLE, THEY SHALL BE TURNED FROM THE VIEW OF MOTORISTS OR COVERED AS DIRECTED BY THE ENGINEER.

THE COST OF FURNISHING, ERECTING, MAINTAINING, AND REMOVING THE REQUIRED SIGNS SHALL BE INCLUDED IN THE CONTRACT.

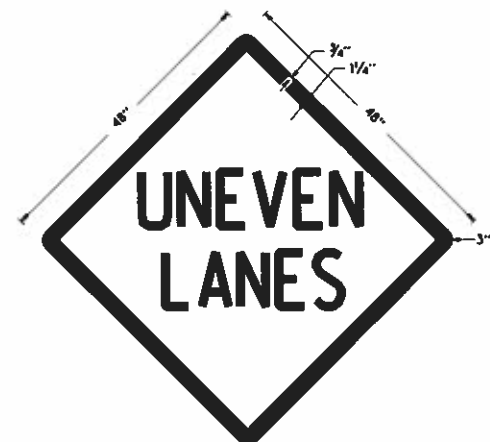
REVISIONS

REDRAWN	2-15-89
REVISED	4-6-93
REVISED	3-27-08
REVIEWED	5-17-13

STD. 9-39

UNEVEN LANES SIGN

W8-11 (48" x 48")



COLORS:

LEGEND AND BORDER - BLACK NON-REFLECTORIZED
 BACKGROUND - ORANGE REFLECTORIZED

NOTE: PRIOR TO ALLOWING TRAFFIC ON ANY PORTION OF THE ROADWAY THAT HAS BEEN COLDMILLED OR BEFORE RESURFACING OPERATIONS BEGIN, THE CONTRACTOR SHALL HAVE ERECTED "UNEVEN PAVEMENT" SIGNS THAT CONFORM TO THE ABOVE DETAILS. A MINIMUM OF ONE SIGN AT EACH END OF THE IMPROVEMENT WILL BE REQUIRED. THE CONTRACTOR SHALL MAINTAIN THE "UNEVEN PAVEMENT" SIGNS UNTIL THE RESURFACING OPERATIONS ARE COMPLETED.

IF AT ANY TIME THE SIGNS ARE IN PLACE BUT NOT APPLICABLE, THEY SHALL BE TURNED FROM THE VIEW OF MOTORISTS OR COVERED AS DIRECTED BY THE ENGINEER.

THE COST OF FURNISHING, ERECTING, MAINTAINING, AND REMOVING THE REQUIRED SIGNS SHALL BE INCLUDED IN THE CONTRACT.

REVISIONS

DRAWN	2-15-89
REVISED	4-06-93
REDESIGNED	7-27-04
RESIZED	5-08-08
REVIEWED	5-17-13

STD. 9-41

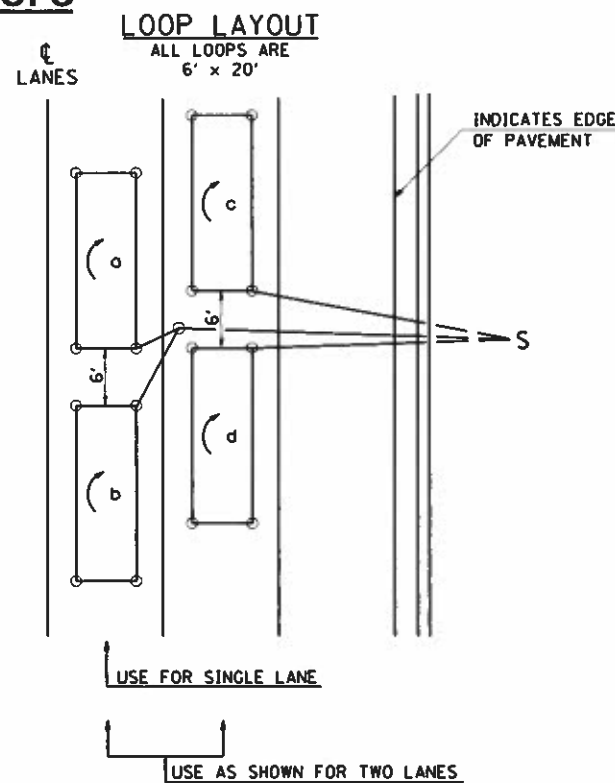
DETAIL OF DETECTOR LOOPS

NOTES

1. THE DETECTOR LOOPS SHALL BE TYPE I. EACH DETECTOR LOOP SHALL HAVE 3 TURNS OF LOOP WIRE AND BE INSTALLED IN ACCORDANCE WITH THE APPLICABLE PORTIONS OF SECTION 886 OF THE STANDARD SPECIFICATIONS FOR TRAFFIC CONTROL ITEMS.
2. BEGINNING LEAD WIRES SHALL BE CONNECTED TO THE BLACK LEAD AND THE ENDING LEAD WIRES SHALL BE CONNECTED TO THE WHITE LEAD OF THE TWIN TWISTED FEED CABLES AT THE SPLICE POINT.
3. WHERE THE LOOPS ARE INSTALLED PRIOR TO RESURFACING, THE LOOP CORNERS SHALL BE DIAGONALLY CUT.

LOOP LEGEND

- CLOCKWISE ROTATION FOR LOOP WIRES
- INDICATES SPLICE POINT FOR DETECTOR LOOP LEAD
- INDICATES 2" CORE-DRILL



DETAIL 6' x 20' DETECTOR LOOPS

REVISIONS

REDRAWN	5-13-02
REVISED	10-21-05
REVISED	3-26-08
REDRAWN	3-16-11
REVISED	4-12-13

STD. 9-92

USER NAME = taylornd	DESIGNED -	REVISED -
PLOT SCALE = 75.0000' / in	DRAWN -	REVISED -
PLOT DATE = 3/28/2019	CHECKED -	REVISED -
	DATE -	REVISED -

STATE OF ILLINOIS
 DEPARTMENT OF TRANSPORTATION

PAVEMENT DETAILS

SCALE: N.T.S. SHEET 24 OF 24 SHEETS STA. TO STA.

F.A.P. RTE.	SECTION	COUNTY	TOTAL SHEETS	SHEET NO.
021	(13.2.13.132)R5-7	JEFFERSON	24	24
				CONTRACT NO. 78727
ILLINOIS FED. AID PROJECT				