

STATE OF ILLINOIS  
DEPARTMENT OF TRANSPORTATION

F.A.I. RTE.	SECTION	COUNTY	TOTAL SHEETS	SHEET NO.
80	(50-2)1-4	LASALLE	25	1
		ILLINOIS	CONTRACT NO. 66J74	

# PROPOSED HIGHWAY PLANS

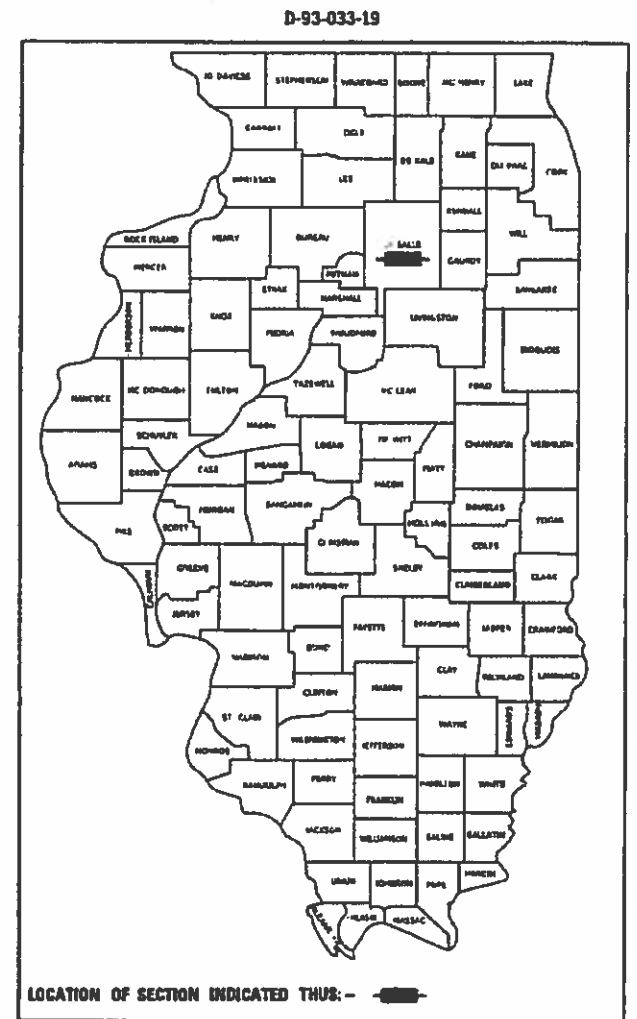
FAI ROUTE 80 (I-80)  
SECTION (50-2)1-4  
PROJECT NHPP-SFHJ(115)  
ROADWAY TEMPORARY CROSSOVER  
LASALLE COUNTY

C-93-054-19

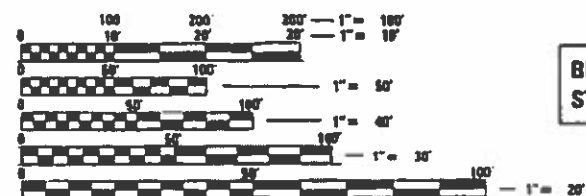
### INDEX OF SHEETS

- 1 COVER SHEET
- 2 GENERAL NOTES & HIGHWAY STANDARDS
- 3-5 SUMMARY OF QUANTITIES
- 6-8 TYPICAL SECTIONS
- 9-11 SCHEDULE OF QUANTITIES
- 12 ALIGNMENTS AND BENCHMARKS
- 13 TEMPORARY EXIT RAMP ELEVATIONS AND OFFSETS
- 14 MEDIAN CLOSURE DETAIL
- 15 EROSION AND SEDIMENT CONTROL
- 16-19 DETAILS
- 20-25 TEMPORARY CROSSOVERS CROSS SECTIONS

FOR LIST OF HIGHWAY STANDARDS, SEE SHEET NO. 2



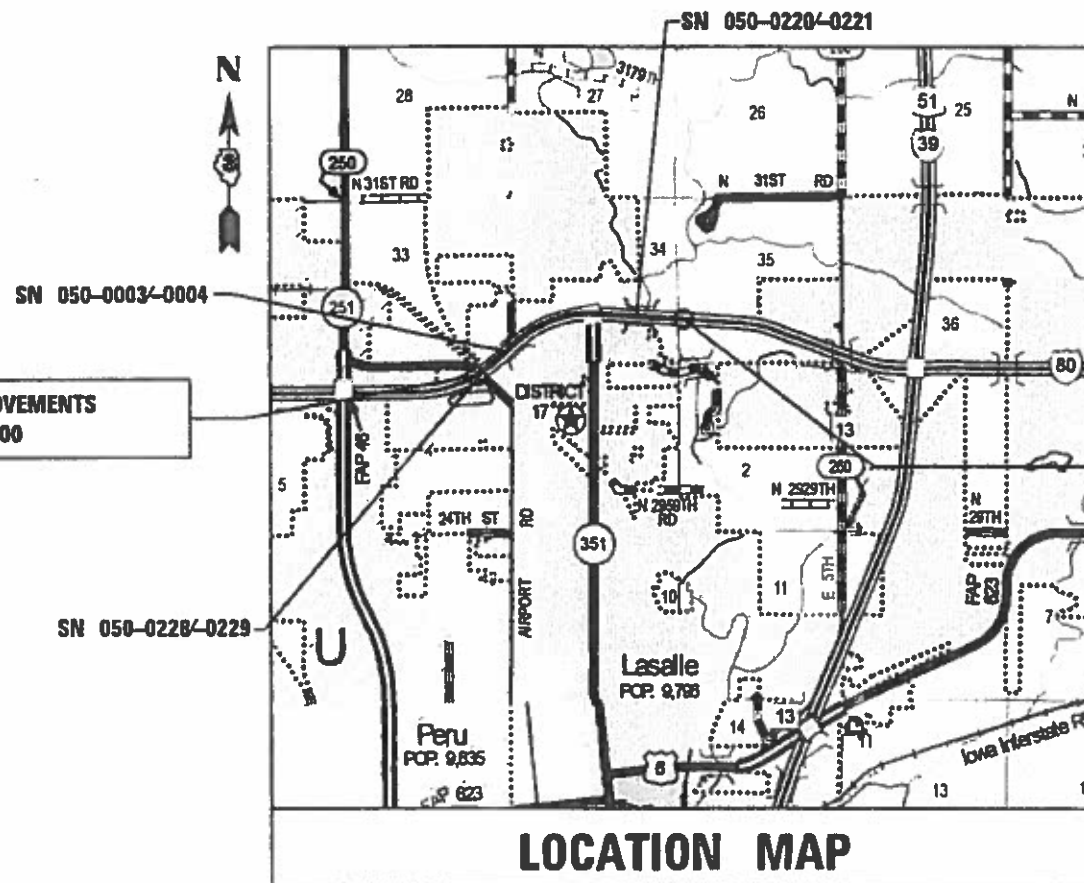
FUNCTIONAL CLASSIFICATION  
INTERSTATE (URBAN)  
2017 ADT = 32,900  
P.V.=58.5% S.U.=4.7% M.U.=36.8%



FULL SIZE PLANS HAVE BEEN PREPARED USING STANDARD ENGINEERING SCALES. REDUCED SIZED PLANS WILL NOT CONFORM TO STANDARD SCALES. IN MAKING MEASUREMENTS ON REDUCED PLANS, THE ABOVE SCALES MAY BE USED.

J.U.L.I.E.  
JOINT UTILITY LOCATION INFORMATION FOR EXCAVATION  
1-800-892-0123  
OR 611

PROJECT ENGINEER JOSEPH E. KANNEL, P.E.  
UNIT CHIEF MICHELE S. LINDEMANN, P.E.  
DISTRICT 3 NO. (815)434-6131  
CONTRACT NO. 66J74



GROSS LENGTH = 5922.22 FT. = 1.122 MILE  
NET LENGTH = 5922.22 FT. = 1.122 MILE



*Gerald Scott Nall*  
Gerald Scott Nall, Illinois P.E. 082-047550  
Expires 11/30/2019

STATE OF ILLINOIS  
DEPARTMENT OF TRANSPORTATION

SUBMITTED 3/22 20 19

*Karin Haddock*  
REGIONAL ENGINEER

*May 10 20 19*  
ENGINEER OF DESIGN AND ENVIRONMENT

*Paul J. [Signature]*  
DIRECTOR OF HIGHWAYS PROJECT IMPLEMENTATION

PRINTED BY THE AUTHORITY  
OF THE STATE OF ILLINOIS



2351 SOUTH DIRKSEN PARKWAY  
SPRINGFIELD, ILLINOIS 62703  
217-679-0563 (P) / 217-679-2204 (F)  
www.quiggeengineering.com

**GENERAL NOTES**

1. THE THICKNESS OF HMA SHOWN ON THE PLANS IS THE NOMINAL THICKNESS. DEVIATIONS FROM THE NOMINAL THICKNESS WILL BE PERMITTED WHEN SUCH DEVIATIONS OCCUR DUE TO IRREGULARITIES IN THE EXISTING SURFACE OR BASE ON WHICH THE HMA IS PLACED.
2. EXCEPT AS NOTED ON THE PLANS, PAVEMENT GRADES SHOWN ARE AT THE TOP OF PAVEMENT SURFACES.
3. BEFORE ORDERING PIPE CULVERTS OR PIPE DRAINS, THE CONTRACTOR SHALL CONSULT THE ENGINEER FOR EXACT LENGTHS.
4. THE ENGINEER WILL BE THE SOLE JUDGE CONCERNING CURING TIME FOR THE VARIOUS HMA LIFTS.
5. FOR STABILIZATION, ALL TYPE III BARRICADES WILL REQUIRE A MINIMUM OF FOUR SAND BAGS PER BARRICADE.
6. SEEDING WILL NOT BE PERMITTED AT ANY TIME WHEN THE GROUND IS FROZEN, WET, OR IN AN UNTILLABLE CONDITION. LOCATIONS TO BE SEEDED WILL BE DETERMINED BY THE ENGINEER.
7. THE FINISHED EARTHWORK SHALL HAVE A VEGETATION SUSTAINING SOIL COVERING THE TOP FOUR INCHES ( 100 MILLIMETERS) IN AREAS TO BE SEEDED OR SODDED. THE VEGETATION SUSTAINING SOIL REQUIRED WILL NOT BE PAID FOR SEPARATELY BUT WILL BE INCLUDED IN THE COST OF FURNISHED EXCAVATION.
8. ALL ELEVATIONS REFERRING TO U.S.G.S. MEAN SEA LEVEL DATUM.
9. ABANDONED UNDERGROUND UTILITIES THAT CONFLICT WITH CONSTRUCTION SHALL BE DISPOSED OF OUTSIDE THE LIMITS OF THE RIGHT OF WAY ACCORDING TO ARTICLE 202.03 OF THE STANDARD SPECIFICATIONS AND AS DIRECTED BY THE ENGINEER. THIS WORK WILL NOT BE PAID FOR SEPARATELY, BUT WILL BE INCLUDED IN THE COST OF EARTH EXCAVATION.
10. ANY REFERENCE TO A STANDARD IN THESE PLANS SHALL BE INTERPRETED TO MEAN THE EDITION AS INDICATED BY THE SUBNUMBER SHOWN IN THE LIST OF STANDARDS OR THE COPY INCLUDED IN THESE PLANS.
11. THE FOLLOWING RATES OF APPLICATION HAVE BEEN USED IN CALCULATING PLAN QUANTITIES:

GRANULAR MATERIALS	2.05	TONS / CU YD
HMA RESURFACING	112	LBS / SQ YD / IN
SHORT TERM PAVEMENT MARKING	10	FT /100 FT OF APPLICATION
MIX FOR CRACKS, ITS & FLGWYS	0.0003	TONS / SQ YD
LEVEL BINDER (HAND METHOD)	0.0005	TONS / SQ YD
SUPPLEMENTAL WATERING	3	GAL / SQ YD / APPLICATION
CALCIUM CHLORIDE	2	LB / SQ YD / APPLICATION
AGGREGATE DITCH CHECKS	5	TONS AGGREGATE

12. THE CONTRACTOR'S ATTENTION IS DIRECTED TO THE PRESENCE OF DEPARTMENT-OWNED UNDERGROUND ELECTRICAL CABLE WITHIN THE LIMITS OF THE PROPOSED IMPROVEMENT. THE CONTRACTOR SHALL REQUEST THE ILLINOIS DEPARTMENT OF TRANSPORTATION IN OTTAWA (815-434-8417) TO LOCATE THE UNDERGROUND FACILITIES, PROVIDING A MINIMUM OF 72 HOURS NOTICE. THE DEPARTMENT IS NOT A MEMBER OF THE JOINT UTILITY LOCATING INFORMATION FOR EXCAVATORS (JULIE) SYSTEM.
13. ALL DAMAGE TO DEPARTMENT OWNED UNDERGROUND FACILITIES, CAUSED BY THE CONTRACTOR SHALL BE REPAIRED TO THE SATISFACTION OF THE DEPARTMENT AT THE CONTRACTOR'S EXPENSE. THIS SHALL INCLUDE ALL TEMPORARY REPAIRS REQUIRED TO KEEP THE FACILITY OPERATIONAL WHILE MATERIAL IS BEING OBTAINED TO MAKE PERMANENT REPAIRS. SPLICING OF ELECTRIC CABLE WILL NOT BE ALLOWED. ELECTRIC CABLE SHALL BE REPLACED FROM POLE TO POLE OR CONTROLLER.
14. THE CONTRACTOR SHALL CONTACT JULIE AT LEAST 48 HOURS PRIOR TO EXCAVATION TO DETERMINE WHICH UTILITIES ARE IN THE AREA.

15. PRIOR TO OPENING LANES TO TRAFFIC, THE CONTRACTOR SHALL PLACE AND COMPACT THE SUBBASE GRANULAR MATERIAL, TYPE B SHOWN IN THE PLANS IN ACCORDANCE WITH SECTION 311 OF THE STANDARD SPECIFICATIONS TO A DEPTH SUCH THAT ANY EXCAVATED DROP OFF BETWEEN THE PAVED SURFACE AND ADJACENT SURFACE WITHIN EIGHT FEET OF THE EDGE OF THE NEAREST TRAFFIC LANE IS LESS THAN TWELVE INCHES. THE NEAREST TRAVEL LANE SHALL BE MEASURED FROM THE ALL LANES OPEN TO TRAFFIC CONFIGURATION.
16. MESSAGE BOARDS WILL BE PLACED 2 WEEKS PRIOR TO START OF WORK AT LOCATIONS DETERMINED BY ENGINEER FOR ADVANCED WARNING.
17. ALL EXCAVATION MATERIAL, WHICH INCLUDES DIGGING OR GRADING OF ANY SOIL OR FILL MATERIAL, WITH THE EXCEPTION OF AGGREGATE FILLS, MUST BE INCORPORATED WITHIN THE IDOT RIGHT OF WAY DUE TO ENVIRONMENTAL DOCUMENTATION REQUIREMENTS.

**ILLINOIS DOT HIGHWAY STANDARDS**

000001-07	STANDARD SYMBOLS, ABBREVIATIONS AND PATTERNS
001006	DECIMAL OF AN INCH AND OF A FOOT
202001-01	EARTH MEDIAN DITCH CHECK
280001-07	TEMPORARY EROSION CONTROL SYSTEMS
542411	SLOPED METAL END SECTIONS FOR PIPE CULVERTS 15" THRU 60" DIA
630001-12	STEEL PLATE BEAM GUARDRAIL
643001-02	SAND MODULE IMPACT ATTENUATORS
701101-05	OFF-RD OPERATIONS, MULTILANE, 15' TO 24" FROM PAVEMENT EDGE
701106-02	OFF-RD OPERATIONS, MULTILANE, MORE THAN 15' AWAY
701401-12	LANE CLOSURE, FREEWAY/EXPRESSWAY
701411-09	LANE CLOSURE, MULTILANE, AT ENTRANCE OR EXIT RAMP, FOR SPEEDS ≥ 45 MPH
701428-01	TRAFFIC CONTROL SETUP AND REMOVAL FREEWAY/ EXPRESSWAY
701456-05	PARTIAL EXIT RAMP CLOSURE FREEWAY/EXPRESSWAY
701901-08	TRAFFIC CONTROL DEVICES
704001-08	TEMPORARY CONCRETE BARRIER
782006	GUARDRAIL AND BARRIER WALL REFLECTOR MOUNTING DETAILS

**MIXTURE REQUIREMENTS**

HMA MIXTURE REQUIREMENT TABLE				
LOCATION(S):	CROSSOVER LOCATIONS	CROSSOVER LOCATIONS	SHOULDER REPAIRS AT STRUCTURES W OF IL 351	SHOULDER REPAIRS AT STRUCTURES W OF IL 351
MIXTURE USE(S):	HMA SURFACE 2"	HMA BINDER LIFT(S)	HMA SURFACE TOP LIFT, 2"	HMA BINDER BOTTOM LIFT 4"
BINDER GRADE (PG):	PG 64-22	PG 64-22	PG 64-22	PG 64-22
DESIGN AIR VOIDS:	4.0% @ N90	4.0% @ N90	4.0% @ N50	4.0% @ N50
MIXTURE COMPOSITION: (MIXTURE GRADATION)	IL 9.5	IL 19.0	IL 9.5	IL 19.0
FRICITION AGGREGATE:	MIXTURE D		MIXTURE D	
MIXTURE WEIGHT:	112.0 LB/SY/IN	112.0 LB/SY/IN	112.0 LB/SY/IN	112.0 LB/SY/IN
QUALITY MANAGEMENT PROGRAM:	QC/QA	QC/QA	QC/QA	QC/QA
SUBLOT SIZE:	N/A	N/A	N/A	N/A
DENSITY TEST METHOD:	CORES	CORES	CORES	CORES

STATE OF ILLINOIS  
DEPARTMENT OF TRANSPORTATION  
DISTRICT THREE  
AS BUILT INFORMATION

\_\_\_\_\_  
SUPERVISING CONSTRUCTION FIELD ENGINEER

\_\_\_\_\_  
RESIDENT ENGINEER / TECHNICIAN

START & END DATES  
OF CONSTRUCTION:

INSPECTORS:

STATE OF ILLINOIS  
DEPARTMENT OF TRANSPORTATION  
DISTRICT THREE

PREPARED BY: *[Signature]*  
DISTRICT STUDIES & PLANS ENGINEER

DATE: 3/23/19

EXAMINED BY: *[Signature]*  
DISTRICT CONSTRUCTION ENGINEER

*[Signature]*  
DISTRICT MATERIALS ENGINEER

*[Signature]*  
DISTRICT OPERATIONS ENGINEER

MODEL: SMODEL\MAMES  
FILE NAME: C:\pwwork\pwwork\corcoran\m0613360\0366421.sht-Germote.dgn



USER NAME = corcoranm	DESIGNED - GSN	REVISED -
PLOT SCALE = 2.0000' / in	DRAWN - TNS	REVISED -
PLOT DATE = 3/20/2019	CHECKED - PEC	REVISED -
	DATE - 2/13/2019	REVISED -

STATE OF ILLINOIS  
DEPARTMENT OF TRANSPORTATION

GENERAL NOTES & HIGHWAY STANDARDS

SCALE: SHEET 1 OF 1 SHEETS STA. TO STA.

F.A.I RTE.	SECTION	COUNTY	TOTAL SHEETS	SHEET NO.
80	(50-2)1-4	LASALLE	25	2
CONTRACT NO. 66174				
ILLINOIS FED. AID PROJECT				

MODEL: 4409E1.NMFE  
 FILE NAME: S:\2019\181018\_Various Structure IDOT D3 Farnsworth PTB 1612\Work Order 13 - 140\_Temp\_Crossovers\CADD\CADD\_Sheets\0366421-1-18-500.dgn

CODE NO.	ITEM	UNIT	TOTAL QUANTITY	CONSTRUCTION TYPE CODE
				90% FED 10% STATE
				ROADWAY
				0006
				URBAN
20200100	EARTH EXCAVATION	CU YD	455	455
20400800	FURNISHED EXCAVATION	CU YD	85	85
25000200	SEEDING, CLASS 2	ACRE	0.50	0.50
25000400	NITROGEN FERTILIZER NUTRIENT	POUND	45	45
25000500	PHOSPHORUS FERTILIZER NUTRIENT	POUND	45	45
25000600	POTASSIUM FERTILIZER NUTRIENT	POUND	45	45
25100115	MULCH, METHOD 2	ACRE	0.50	0.50
25100630	EROSION CONTROL BLANKET	SQ YD	24	24
28000250	TEMPORARY EROSION CONTROL SEEDING	POUND	50	50
28000400	PERIMETER EROSION BARRIER	FOOT	299	299
31101810	SUBBASE GRANULAR MATERIAL, TYPE B 12"	SQ YD	1,193	1,193
40600275	BITUMINOUS MATERIALS (PRIME COAT)	POUND	2,683	2,683
40600290	BITUMINOUS MATERIALS (TACK COAT)	POUND	3,333	3,333
40603080	HOT-MIX ASPHALT BINDER COURSE, IL-19.0, N50	TON	282	282

\* SPECIALTY ITEM



USER NAME = tneffsmith  
 PLOT SCALE = 2,0000 ' / in.  
 PLOT DATE = 3/12/2019

DESIGNED - GSN  
 DRAWN - TNS  
 CHECKED - PEC  
 DATE - 2/13/2019

REVISED -  
 REVISED -  
 REVISED -  
 REVISED -

**STATE OF ILLINOIS  
 DEPARTMENT OF TRANSPORTATION**

**SUMMARY OF QUANTITIES**

SCALE: SHEET 1 OF 3 SHEETS STA. TO STA.

F.A.I. RTE.	SECTION	COUNTY	TOTAL SHEETS	SHEET NO.
80	(50-2)-I-4	LASALLE	25	3
ILLINOIS FED. AID PROJECT			CONTRACT NO. 66J74	

MODEL: 4409E1.MXD  
 FILE NAME: S:\2019\181018\_Various Structure IDOT D3 Farnsworth PTB 16121\Work Order 13 - 140\_Temp\_Crossovers\CADD\CADD\_Sheets\0366421-1-18-500.dgn

CODE NO.	ITEM	UNIT	TOTAL QUANTITY	CONSTRUCTION TYPE CODE
				90% FED 10% STATE
				ROADWAY
				0006 URBAN
40603090	HOT-MIX ASPHALT BINDER COURSE, IL-19.0, N90	TON	1,080	1,080
40603335	HOT-MIX ASPHALT SURFACE COURSE, MIX "D", N50	TON	142	142
40603345	HOT-MIX ASPHALT SURFACE COURSE, MIX "D", N90	TON	457	457
44000173	HOT-MIX ASPHALT SURFACE REMOVAL, 6"	SQ YD	4,144	4,144
48101200	AGGREGATE SHOULDERS, TYPE B	TON	376	376
50102400	CONCRETE REMOVAL	CU YD	0.20	0.20
542D0223	PIPE CULVERTS, CLASS D, TYPE 1 18"	FOOT	182	182
54260818	SLOPED METAL END SECTION, STANDARD 542416, 18", 1:4	EACH	2	2
63200310	GUARDRAIL REMOVAL	FOOT	619	619
67000400	ENGINEER'S FIELD OFFICE, TYPE A	CAL MO	1	1
67100100	MOBILIZATION	L SUM	1	1
70100420	TRAFFIC CONTROL AND PROTECTION, STANDARD 701411	EACH	2	2
70100825	TRAFFIC CONTROL AND PROTECTION, STANDARD 701456	L SUM	1	1
70103815	TRAFFIC CONTROL SURVEILLANCE	CAL DA	10	10

\* SPECIALTY ITEM



USER NAME = tneffsmith  
 PLOT SCALE = 2,000' / in.  
 PLOT DATE = 3/19/2019

DESIGNED - GSN  
 DRAWN - TNS  
 CHECKED - PEC  
 DATE - 2/13/2019

REVISED -  
 REVISED -  
 REVISED -  
 REVISED -

**STATE OF ILLINOIS  
 DEPARTMENT OF TRANSPORTATION**

**SUMMARY OF QUANTITIES**

SCALE: SHEET 2 OF 3 SHEETS STA. TO STA.

F.A.J. RTE.	SECTION	COUNTY	TOTAL SHEETS	SHEET NO.
80	(50-2)-I-4	LASALLE	25	4
ILLINOIS FED. AID PROJECT			CONTRACT NO. 66J74	

MODEL: Default  
 FILE: \\nas01c.psu.edu\lancon\m.dattillio\gsd\Projects\RDOT\Documents\RDOT\_Offices\District\_3\Projects\03667\AC\Consultant\Drawings\CADD\_Sheets\036672\_Lght-S00.dgn

CODE NO.	ITEM	UNIT	TOTAL QUANTITY	CONSTRUCTION TYPE CODE
				90% FED 10% STATE
				ROADWAY 0006 URBAN
70107025	CHANGEABLE MESSAGE SIGN	CAL DA	56	56
70200100	NIGHTTIME WORK ZONE LIGHTING	L SUM	1	1
70600250	IMPACT ATTENUATORS, TEMPORARY (NON-REDIRECTIVE), TEST LEVEL 3	EACH	1	1
* 72501000	TERMINAL MARKER - DIRECT APPLIED	EACH	1	1
* 78001150	PAINT PAVEMENT MARKING - LINE 12"	FOOT	66	66
* 78200011	BARRIER WALL REFLECTORS, TYPE C	EACH	174	174
* X0325349	TEMPORARY CONCRETE BARRIER (TO REMAIN PERMANENTLY)	FOOT	362.5	362.5
X0326880	MESSAGE BOARD VEHICLE DRIVER	HOOR	160	160
X0326907	PORTABLE, VEHICLE MOUNTED, CHANGEABLE MESSAGE SIGN	CAL MO	1	1
* X0327622	REMOVE AND REINSTALL HIGH TENSION CABLE MEDIAN BARRIER	FOOT	407	407
X6350120	DELINEATOR REMOVAL	EACH	1	1
X7010805	TRAFFIC CONTROL AND PROTECTION, STANDARD 701401 (SPECIAL)	L SUM	1	1
X9700018	TEMPORARY PORTABLE RUMBLE STRIPS	EACH	2	2
Z0013798	CONSTRUCTION LAYOUT	L SUM	1	1
Z0065765	SLOTTED DRAIN 18" WITH VARIABLE SLOT	FOOT	194	194

\* SPECIALTY ITEM



USER NAME = corcoranlm  
 PLOT SCALE = 2,0000 ' / in.  
 PLOT DATE = 3/22/2019

DESIGNED - GSN  
 DRAWN - TNS  
 CHECKED - PEC  
 DATE - 2/13/2019

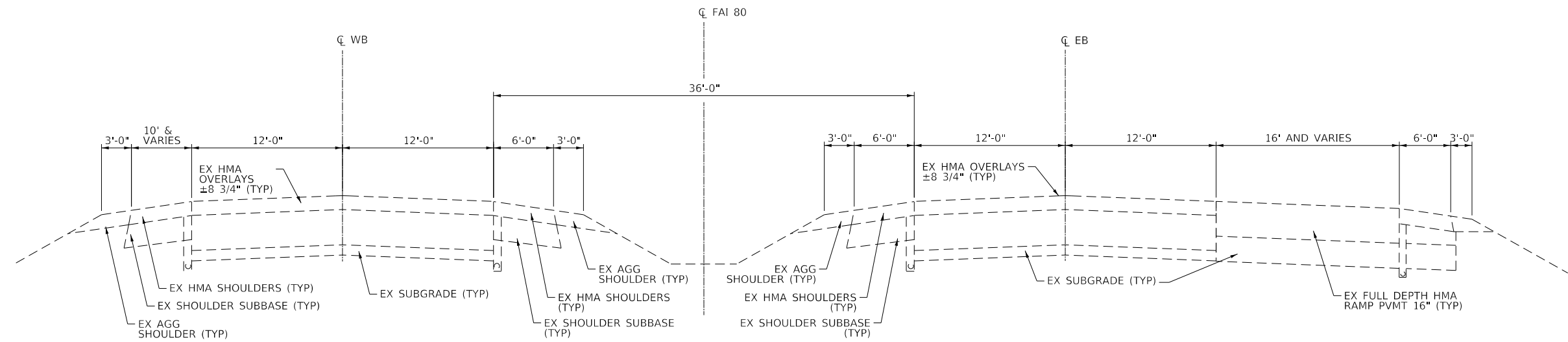
REVISED -  
 REVISED -  
 REVISED -  
 REVISED -

**STATE OF ILLINOIS  
 DEPARTMENT OF TRANSPORTATION**

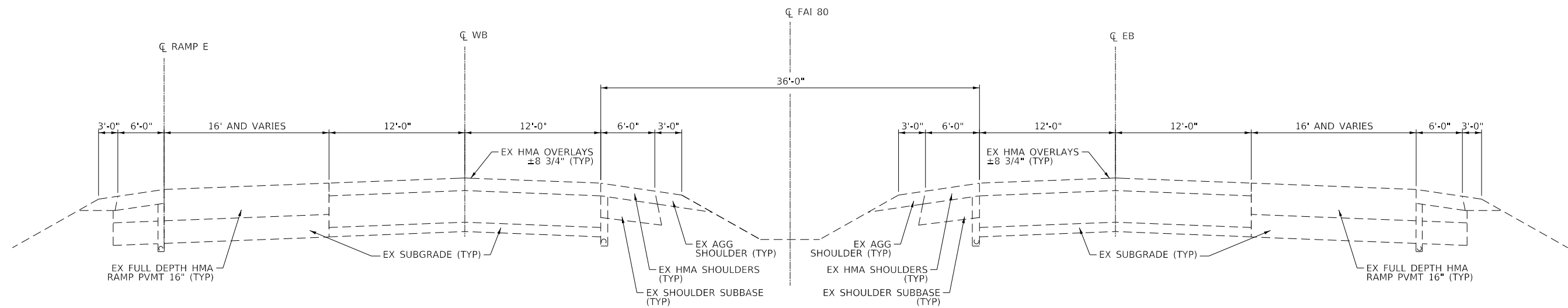
**SUMMARY OF QUANTITIES**

SCALE: SHEET 3 OF 3 SHEETS STA. TO STA.

F.A.J. RTE.	SECTION	COUNTY	TOTAL SHEETS	SHEET NO.
80	(50-2)-I-4	LASALLE	25	5
CONTRACT NO. 66J74			ILLINOIS FED. AID PROJECT	



**EXISTING TYPICAL SECTION**  
STA 665+00.00 TO STA 668+26.46



**EXISTING TYPICAL SECTION**  
STA 668+26.46 TO STA 669+82.63

MODEL: 414091E1.NAM.FS  
FILE NAME: S:\2019\181181.018\_Various Structure IDOT D3\_Farmsworth PTB 161211\Work Order 13 - 180\_Temp\_Crossovers\CADD\CADD\_Sheets\181181\_018\_TYP.dgn



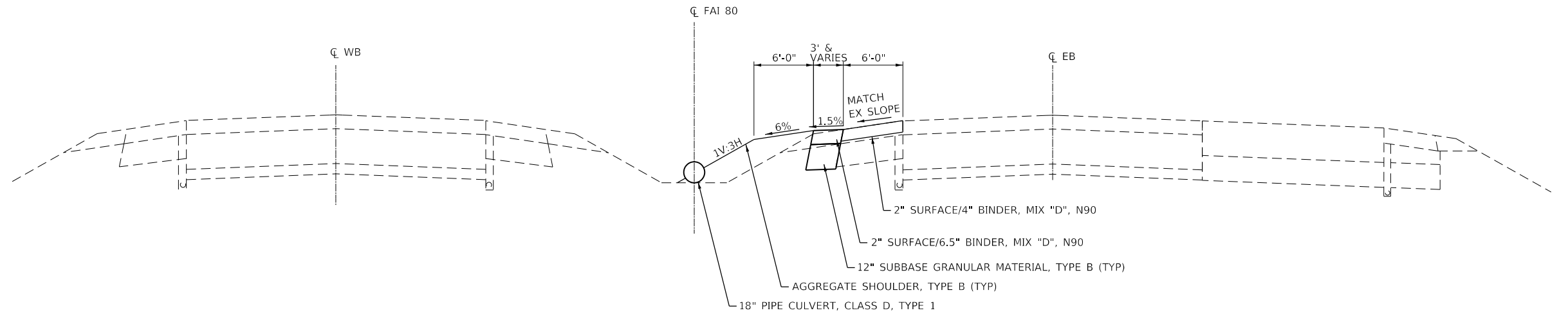
USER NAME = tneffsmith	DESIGNED - GSN	REVISED -
PLOT SCALE = 2,000' / in.	DRAWN - TNS	REVISED -
PLOT DATE = 3/8/2019	CHECKED - PEC	REVISED -
	DATE - 2/13/2019	REVISED -

**STATE OF ILLINOIS  
DEPARTMENT OF TRANSPORTATION**

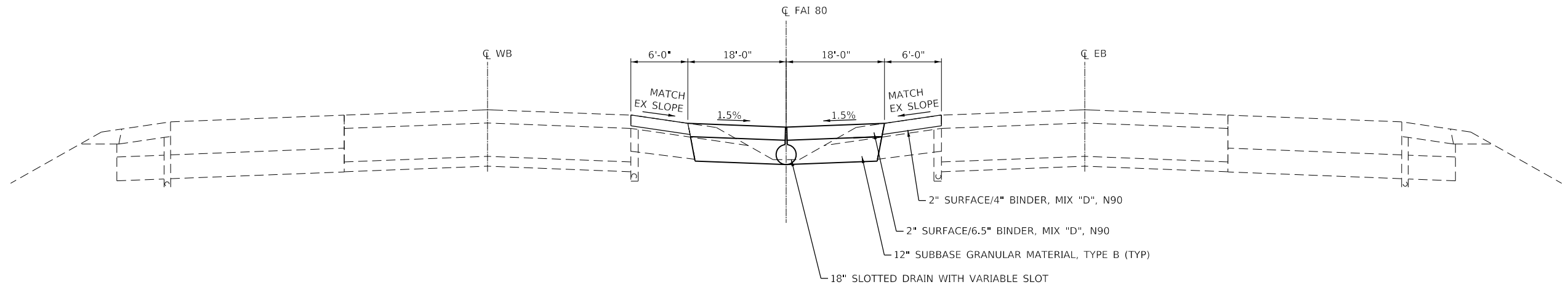
**TYPICAL SECTIONS**

SCALE: SHEET 1 OF 3 SHEETS STA. TO STA.

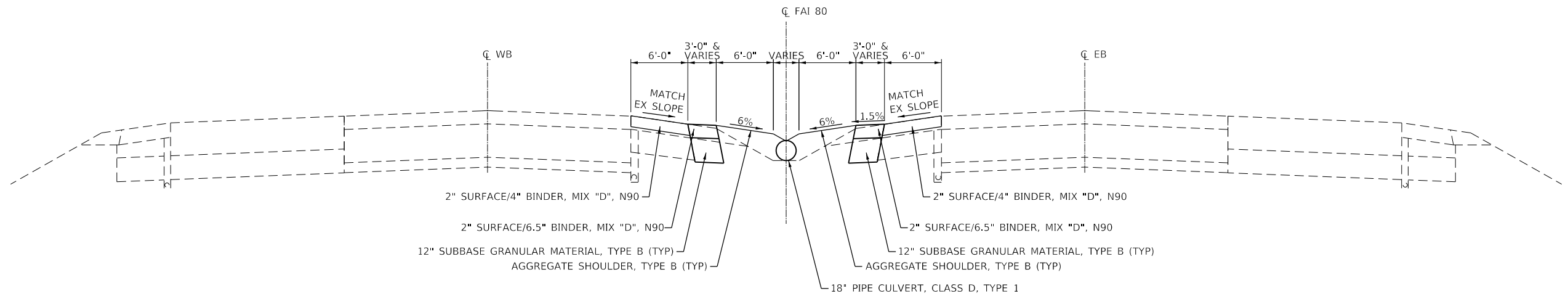
F.A.J. RTE.	SECTION	COUNTY	TOTAL SHEETS	SHEET NO.
80	(50-2)I-4	LASALLE	25	6
CONTRACT NO. 66J74				
ILLINOIS FED. AID PROJECT				



**PROPOSED TYPICAL SECTION**  
STA 664+99.00 TO STA 666+06.00



**PROPOSED TYPICAL SECTION**  
STA 666+06.00 TO STA 668+00.00



**PROPOSED TYPICAL SECTION**  
STA 668+00.00 TO STA 669+82.63

MODEL: 140901ENR.MXD  
FILE NAME: S:\2019\18110181\_Various Structure IDOT D3 Farmsworth PTB 161211Work Order 13 - 140\_Temp Crossovers\CADD\CADD\_Sheets\0366421-1-18-TYP.dgn



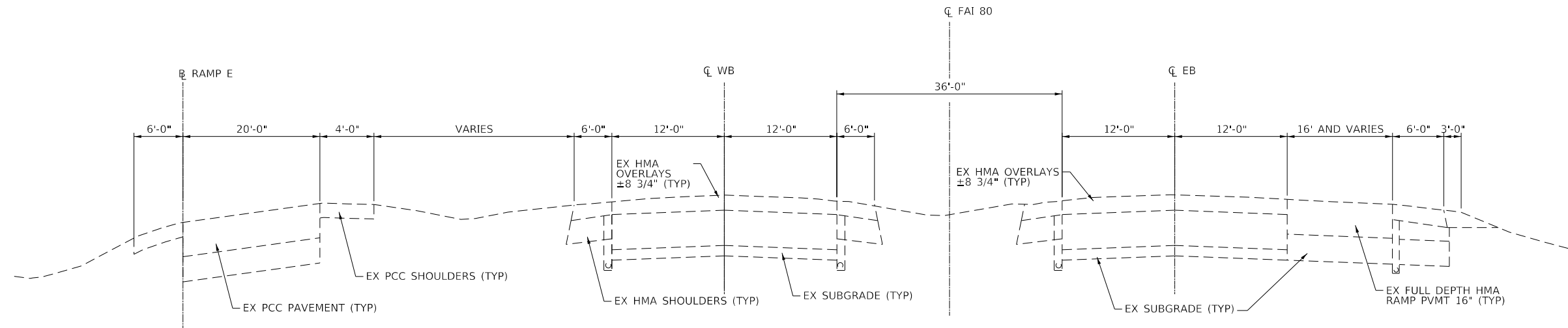
USER NAME = tneffsmith	DESIGNED - GSN	REVISED -
PLOT SCALE = 2,000' / in.	DRAWN - TNS	REVISED -
PLOT DATE = 3/8/2019	CHECKED - PEC	REVISED -
	DATE - 2/13/2019	REVISED -

**STATE OF ILLINOIS  
DEPARTMENT OF TRANSPORTATION**

**TYPICAL SECTIONS**

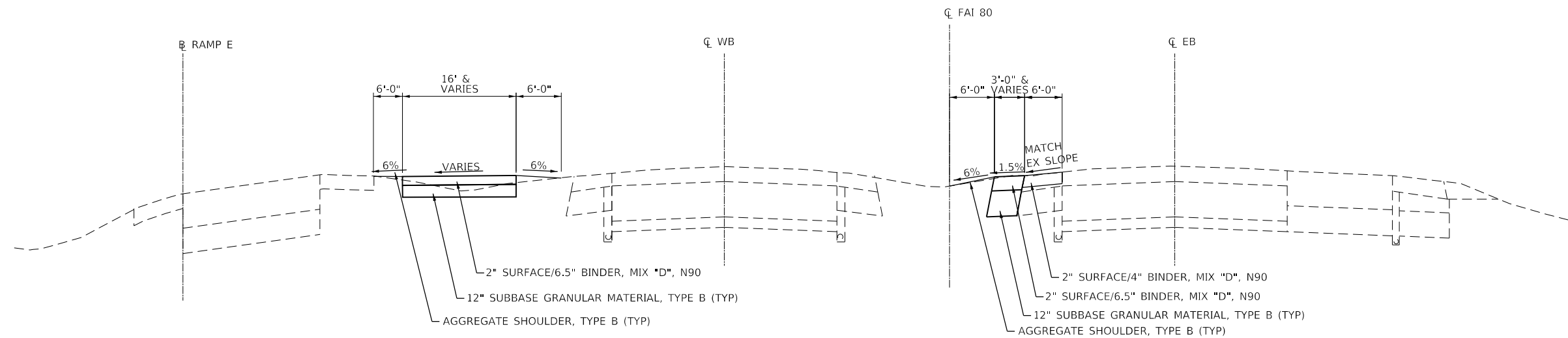
SCALE: SHEET 2 OF 3 SHEETS STA. TO STA.

F.A.J. RTE.	SECTION	COUNTY	TOTAL SHEETS	SHEET NO.
80	(50-2)I-4	LASALLE	25	7
CONTRACT NO. 66J74				
ILLINOIS FED. AID PROJECT				



**EXISTING TYPICAL SECTION RAMP E**

STA 664+31.38 TO STA 666+00.20



**PROPOSED TYPICAL SECTION RAMP E**

STA 664+31.38 TO STA 666+00.20

MODEL: 4100E1\MKMF5  
 FILE NAME: S:\2019\181018\_Various Structure IDOT D3\_Farmsworth\_PTB\_1612\Work Order 13 - 180\_Temp\_Crossover\CADD\CADD\_Sheets\0566121-181-TYP.dgn



USER NAME = tneffsmith	DESIGNED - GSN	REVISED -
PLOT SCALE = 2,000' / in.	DRAWN - TNS	REVISED -
PLOT DATE = 3/8/2019	CHECKED - PEC	REVISED -
	DATE - 2/13/2019	REVISED -

**STATE OF ILLINOIS  
DEPARTMENT OF TRANSPORTATION**

<b>TYPICAL SECTIONS</b>			
SCALE:	SHEET 3	OF 3 SHEETS	STA. TO STA.

F.A.I. RTE.	SECTION	COUNTY	TOTAL SHEETS	SHEET NO.
80	(50-2)I-4	LASALLE	25	8
CONTRACT NO. 66J74				
ILLINOIS FED. AID PROJECT				











EXIST. CURVE EXBL\_RAMPE2  
PI STA. = 180+36.60  
Δ = 27° 30' 07" (LT)  
D = 13° 58' 16"  
R = 410.10'  
T = 100.36'  
L = 196.85'  
E = 12.10'  
e = N.e.  
T.R. = N/A  
S.E. RUN = N/A  
P.C. STA. = 179+36.24  
P.T. STA. = 181+33.09

EXIST. CURVE EXBL\_RAMPE1  
PI STA. = 174+12.66  
Δ = 31° 08' 15" (RT)  
D = 7° 35' 35"  
R = 754.59'  
T = 210.24'  
L = 410.08'  
E = 28.74'  
e = N.e.  
T.R. = N/A  
S.E. RUN = N/A  
P.C. STA. = 172+02.42  
P.T. STA. = 176+12.50

PROP. CURVE BASELINE\_1\_R1  
PI STA. = 402+37.23  
Δ = 29° 31' 59" (RT)  
D = 6° 21' 58"  
R = 900.00'  
T = 237.23'  
L = 463.91'  
E = 30.74'  
e = N.e.  
T.R. = N/A  
S.E. RUN = N/A  
P.C. STA. = 400+00.00  
P.T. STA. = 404+63.91

PROP. CURVE BASELINE\_2\_R1  
PI STA. = 301+22.75  
Δ = 8° 33' 40" (RT)  
D = 3° 29' 37"  
R = 1,640.00'  
T = 122.75'  
L = 245.05'  
E = 4.59'  
e = N.e.  
T.R. = N/A  
S.E. RUN = N/A  
P.C. STA. = 300+00.00  
P.T. STA. = 302+45.05

PROP. CURVE BASELINE\_2\_R2  
PI STA. = 307+75.93  
Δ = 8° 54' 36" (RT)  
D = 4° 46' 29"  
R = 1,200.00'  
T = 93.49'  
L = 186.61'  
E = 3.64'  
e = N.e.  
T.R. = N/A  
S.E. RUN = N/A  
P.C. STA. = 306+82.44  
P.T. STA. = 308+69.05

EXIST. CURVE 80-SEC50-2\_6  
PI STA. = 643+91.28  
Δ = 47° 02' 15" (RT)  
D = 1° 30' 00"  
R = 3,819.84'  
T = 1,662.40'  
L = 3,135.93'  
E = 346.06'  
e = N.e.  
T.R. = N/A  
S.E. RUN = N/A  
P.C. STA. = 627+28.88  
P.T. STA. = 658+64.81

EXIST. CURVE EXBL\_RAMPG1  
PI STA. = 239+75.08  
Δ = 56° 15' 07" (RT)  
D = 12° 02' 38"  
R = 475.72'  
T = 254.29'  
L = 467.05'  
E = 63.70'  
e = N.e.  
T.R. = N/A  
S.E. RUN = N/A  
P.C. STA. = 237+20.79  
P.T. STA. = 241+87.85

EXIST. CURVE EXBL\_RAMPG2  
PI STA. = 244+27.93  
Δ = 34° 35' 32" (RT)  
D = 7° 25' 53"  
R = 770.99'  
T = 240.08'  
L = 465.49'  
E = 36.51'  
e = N.e.  
T.R. = N/A  
S.E. RUN = N/A  
P.C. STA. = 241+87.85  
P.T. STA. = 246+53.33

### CONTROL POINTS

POINT	STATION	OFFSET	NORTHING	EASTING	ELEVATION
CP1000	666+33.97	-60.1850	1714819.1070		611.136
BM670	669+70.89	-84.7836	1714821.4640		604.685
BM675	674+57.37	-16.4627	1714721.2540		595.341
CP10	678+19.26	-14.1927	1714695.1560		594.576

GPS NUMBER	DESCRIPTION	EXISTING MONUMENT TYPE	PROPOSED MONUMENT TYPE	MONUMENT RECORD TO BE RECORDED	RESPONSIBILITY
N/A	NO PERMANENT SURVEY MARKERS OR SECTION CORNER MARKERS TO BE SET ON THIS JOB	N/A	N/A	N/A	N/A
NO KNOWN SURVEY OR CENTERLINE CONTROL MONUMENTS ARE IN A LOCATION THAT WILL BE DISTURBED BY THE MEDIAN CROSSOVER & SHOULDER RECONSTRUCTION WORK. IF A MONUMENT IS FOUND THAT WILL BE REMOVED DUE TO THIS WORK, THE R.E. WILL INFORM THE PLATS AND PLANS SECTION OF THE LOCATION, AND THE PLATS AND PLANS SECTION WILL SET AND TIE A SUITABLE REPLACEMENT MONUMENT AFTER RESURFACING IS COMPLETED. NO MONUMENT RECORDS ARE ANTICIPATED FOR THIS JOB.					

MODEL: Default  
FILE: 66618.dwg  
PROJECT: 66618.dwg  
DOCUMENT: 66618.dwg  
OFFICE: 66618.dwg  
CONTRACT: 66618.dwg  
SHEET: 66618.dwg



USER NAME	DESIGNED	REVISIONS
= corcoranlm	- GSN	-
	DRAWN - TNS	REVISIONS -
	CHECKED - PEC	REVISIONS -
	DATE - 2/13/2019	REVISIONS -

## STATE OF ILLINOIS DEPARTMENT OF TRANSPORTATION

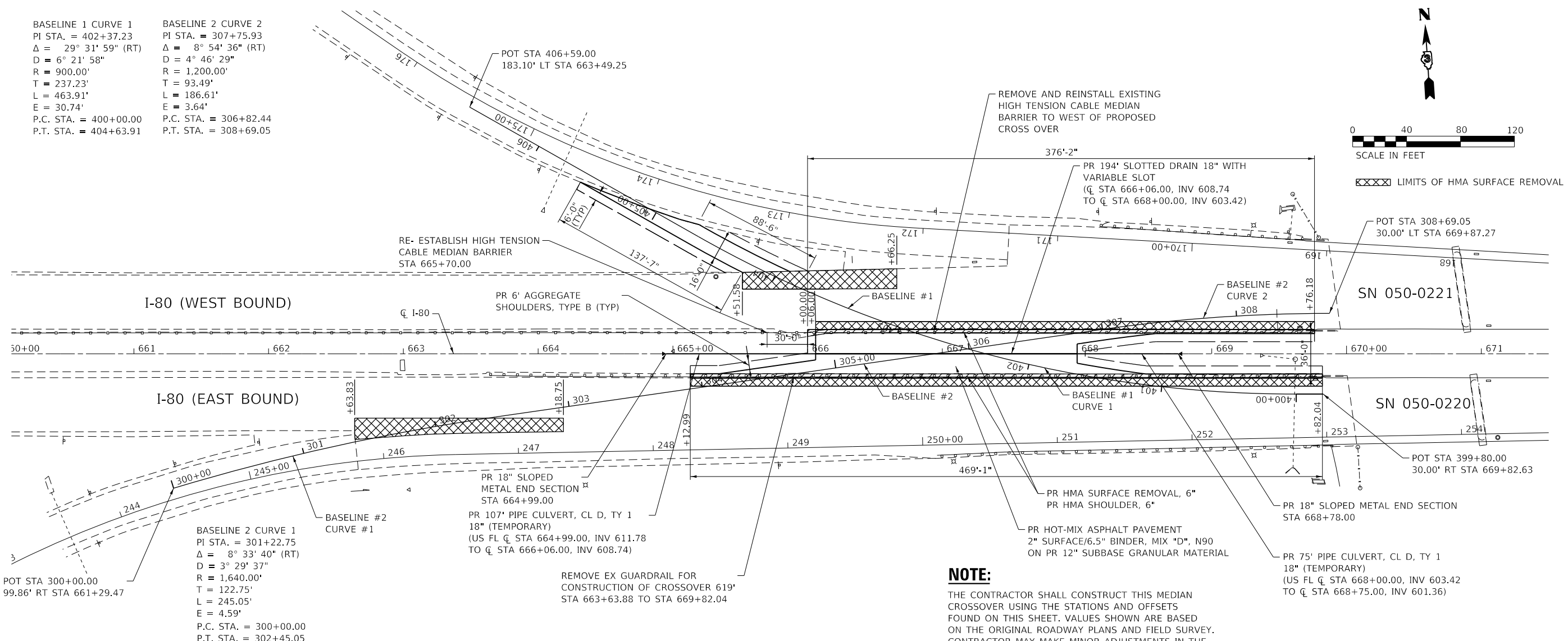
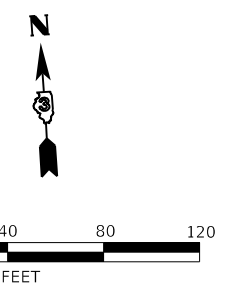
### ALIGNMENTS & BENCHMARKS

SCALE: SHEET 1 OF 1 SHEETS STA. TO STA.

F.A.J. RTE.	SECTION	COUNTY	TOTAL SHEETS	SHEET NO.
80	(50-2)I-4	LASALLE	25	12
CONTRACT NO. 66J74				
ILLINOIS FED. AID PROJECT				

**BASELINE 1 CURVE 1**  
 PI STA. = 402+37.23  
 $\Delta = 29^\circ 31' 59''$  (RT)  
 $D = 6^\circ 21' 58''$   
 $R = 900.00'$   
 $T = 237.23'$   
 $L = 463.91'$   
 $E = 30.74'$   
 P.C. STA. = 400+00.00  
 P.T. STA. = 404+63.91

**BASELINE 2 CURVE 2**  
 PI STA. = 307+75.93  
 $\Delta = 8^\circ 54' 36''$  (RT)  
 $D = 4^\circ 46' 29''$   
 $R = 1,200.00'$   
 $T = 93.49'$   
 $L = 186.61'$   
 $E = 3.64'$   
 P.C. STA. = 306+82.44  
 P.T. STA. = 308+69.05

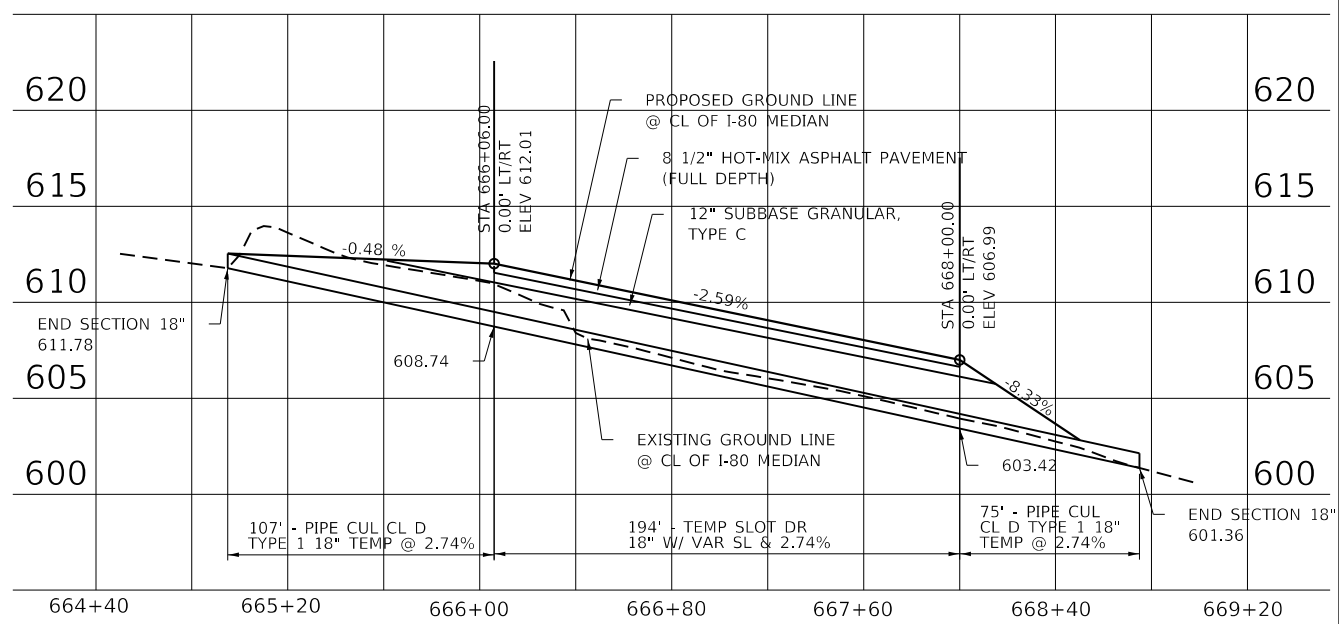


**ELEVATION AND OFFSET DATA**

CL SURVEY F.A.I. 80 STATION	BASELINE #1		BASELINE #2		E.O.P. LT OF CL		E.O.P. RT OF CL		BREAK POINT LEFT		E.O.P. RT OF CL		BREAK POINT RIGHT			
	OFFSET (FT)		OFFSET (FT)		OFFSET (FT)	ELEVATION	OFFSET (FT)	ELEVATION	OFFSET (FT)	ELEVATION	OFFSET (FT)	ELEVATION	OFFSET (FT)	ELEVATION		
664+28.73	138.07	LT	38.23	RT	128.48	LT	617.03			122.00	LT	616.64				
664+31.38	136.58	LT	37.58	RT	127.38	LT	616.94			120.48	LT	616.52				
664+50.00	126.02	LT	35.17	RT	116.83	LT	616.53			109.93	LT	616.07				
665+00.00	97.70	LT	27.95	RT	101.46	LT	614.64	88.50	LT	614.87	81.61	LT	614.46			
665+12.98	90.35	LT	26.08	RT	97.46	LT	614.26	81.15	LT	614.45	74.24	LT	614.02	18.00		
665+19.53	86.63	LT	25.14	RT	95.83	LT	614.07	77.49	LT	614.22	70.59	LT	613.81	18.00		
665+20.61	86.02	LT	24.98	RT	99.69	LT	614.04	76.84	LT	614.19	69.95	LT	613.78	18.00		
665+34.72	78.24	LT	22.95	RT	87.35	LT	613.63	69.16	LT	613.72	62.00	LT	613.51	18.00		
665+39.09	75.88	LT	22.32	RT	84.97	LT	613.51	66.83	LT	613.64	60.05	LT	613.50	18.00		
665+41.98	74.35	LT	21.90	RT	83.41	LT	613.43	65.31	LT	613.50		LT	613.48	18.00		
665+50.00	70.16	LT	20.74	RT	61.17	LT	613.22	79.18	LT	613.25	85.95	LT	612.97	18.00		
665+51.58	69.35	LT	20.51	RT	60.37	LT	613.17	78.35	LT	613.15	85.15	LT	612.99	18.00		
665+86.47	52.38	LT	15.48	RT	61.19	LT	612.28				67.81	LT	612.28	18.00		
666+00.00	46.29	LT	13.53	RT								LT	612.24	18.00		
666+00.20	46.20	LT	13.50	RT						61.52	LT	611.93				
666+06.00	43.67	LT	12.67	RT	18.00	LT	612.17					18.00	RT	612.28		
666+50.00	26.04	LT	6.32	RT	18.00	LT	611.09	0.00	LT	610.87			18.00	RT	611.19	
667+00.00	9.17	LT	0.89	RT	18.00	LT	609.78	0.00	LT	609.58			18.00	RT	609.93	
667+50.00	8.10	LT	4.52	RT	18.00	LT	608.54	0.00	LT	608.28			18.00	RT	608.56	
668+00.00	15.32	LT	15.18	RT	18.00	LT	607.26	0.00	LT	606.99			18.00	RT	607.32	
668+06.00	16.23	LT	16.27	RT	18.00	LT	607.10	8.14	LT	606.95	2.07	LT	606.58	18.00	RT	607.16
668+50.00	22.12	LT	22.92	RT	18.00	LT	605.86	14.07	LT	605.80	8.03	LT	605.44	18.00	RT	605.90
668+51.47	22.29	LT	23.11	RT	18.00	LT	605.82	14.24	LT	605.78	8.20	LT	605.42	18.00	RT	605.90
668+58.60	23.08	LT	23.97	RT	18.00	LT	605.60	15.00	LT	605.56	9.00	LT	605.20	18.00	RT	605.67
669+00.00	26.82	LT	27.82	RT	18.00	LT	604.46	15.00	LT	604.42	9.00	LT	604.06	18.00	RT	604.41
669+50.00	29.42	LT	29.91	RT	18.00	LT	603.11	15.00	LT	603.08	9.00	LT	602.72	18.00	RT	602.87
669+76.18	29.95	LT		RT	18.00	LT	602.36	15.00	LT	602.31	9.00	LT	601.96	18.00	RT	602.16
669+82.04	29.99	LT		RT								18.00	RT	602.06		

**NOTE:**

THE CONTRACTOR SHALL CONSTRUCT THIS MEDIAN CROSSOVER USING THE STATIONS AND OFFSETS FOUND ON THIS SHEET. VALUES SHOWN ARE BASED ON THE ORIGINAL ROADWAY PLANS AND FIELD SURVEY. CONTRACTOR MAY MAKE MINOR ADJUSTMENTS IN THE FIELD AS APPROVED BY THE ENGINEER.



**PROFILE GRADE**

MODEL: 44001E11018 Various Structure IDOT 03 Fairweather RTB 161211Work Order 13 - 1480 Temp. Crossover/CADD/CADD Sheets/D366421-1-161211.dwg  
 FILE NAME: S:\2013\11\18\11018 Various Structure IDOT 03 Fairweather RTB 161211Work Order 13 - 1480 Temp. Crossover/CADD/CADD Sheets/D366421-1-161211.dwg



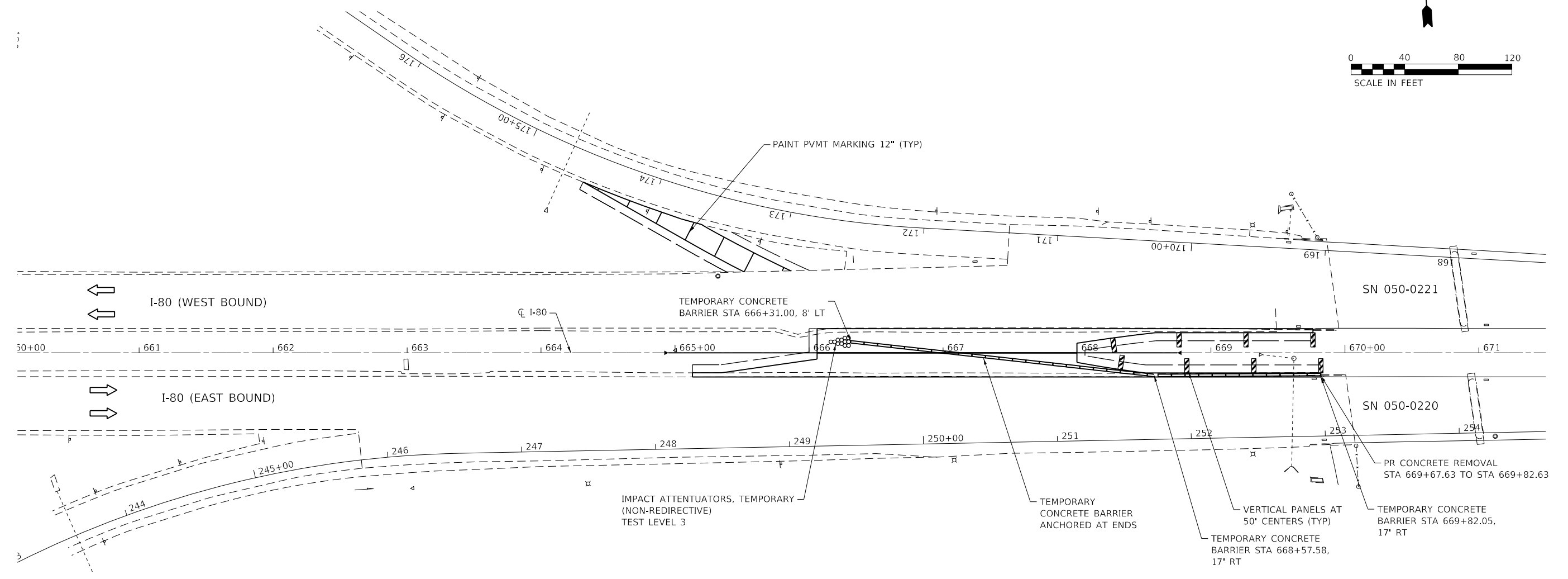
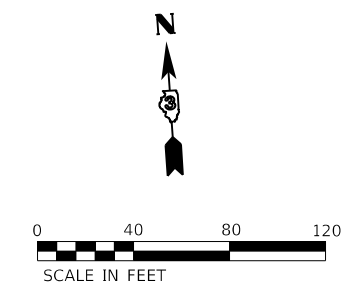
USER NAME = tneffsmith	DESIGNED - GSN	REVISED -
PLOT SCALE = 80.0000' / in.	DRAWN - TSN	REVISED -
PLOT DATE = 3/11/2019	CHECKED - PEC	REVISED -
	DATE - 2/13/2019	REVISED -

STATE OF ILLINOIS  
DEPARTMENT OF TRANSPORTATION

**TEMPORARY EXIT RAMP  
ELEVATIONS AND OFFSETS**

SCALE: SHEET 1 OF 1 SHEETS STA. TO STA.

F.A.I. RTE. 80	SECTION (50-2)I-4	COUNTY LASALLE	TOTAL SHEETS 25	SHEET NO. 13
ILLINOIS FED. AID PROJECT			CONTRACT NO. 66J74	



**LEGEND**

- VERTICAL PANEL
- TEMPORARY CONCRETE BARRIER
- IMPACT ATTENUATORS, TEMPORARY

**NOTES:**

1. TEMPORARY CONCRETE BARRIER TO BE ANCHORED AT ENDS.
2. REMOVE EXISTING CONCRETE APPROACH CURB IN NW QUADRANT OF SN 050-0220 TO ALLOW PLACEMENT OF CONCRETE BARRIER.

MODEL: 4409E1\NAME.FE  
 FILE NAME: S:\2019\181018\_Various Structure IDOT D3 Farmsworth PTB 1612\Work Order 13 - 180\_Temp\_Crossovers\CADD\CADD\_Sheets\0566121-1612-ptb-median\_closure\_detail.dgn



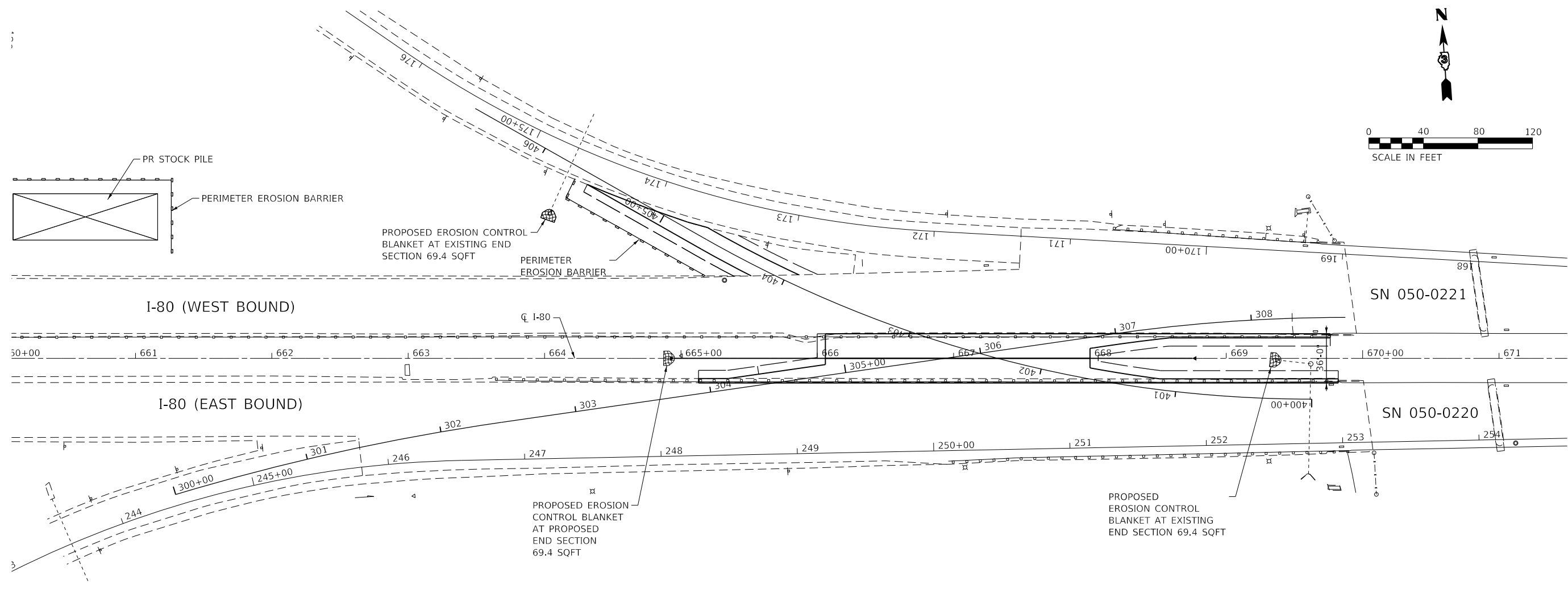
USER NAME = tneffsmith	DESIGNED - GSN	REVISED -
DRAWN - TSN	CHECKED - PEC	REVISED -
PLOT SCALE = 80.0000' / in.	DATE - 2/13/19	REVISED -
PLOT DATE = 3/19/2019		

**STATE OF ILLINOIS  
DEPARTMENT OF TRANSPORTATION**

**MEDIAN CLOSURE DETAIL**

SCALE: SHEET 1 OF 1 SHEETS STA. TO STA.

F.A.J. RTE.	SECTION	COUNTY	TOTAL SHEETS	SHEET NO.
80	(50-2)I-4	LASALLE	25	14
CONTRACT NO. 66J74				
ILLINOIS FED. AID PROJECT				



**NOTE:**  
SEE DETAILS FOR EROSION CONTROL BLANKET LINING AROUND END SECTION AND EROSION CONTROL FOR PERIMETER EROSION BARRIER INSTALLATION.

**LEGEND:**  
 EROSION CONTROL BLANKET  
 PERIMETER EROSION BARRIER

MODEL: 414091E1\MX18 - Various Structure IDOT D3 - Farnsworth - PTB 16121\Work - Order 13 - 1480 - Temp - Crossovers\CADD\CADD - Sheets\0566121-4-eroc.dgn  
 FILE NAME: S:\2019\16121\16121-4-eroc.dgn

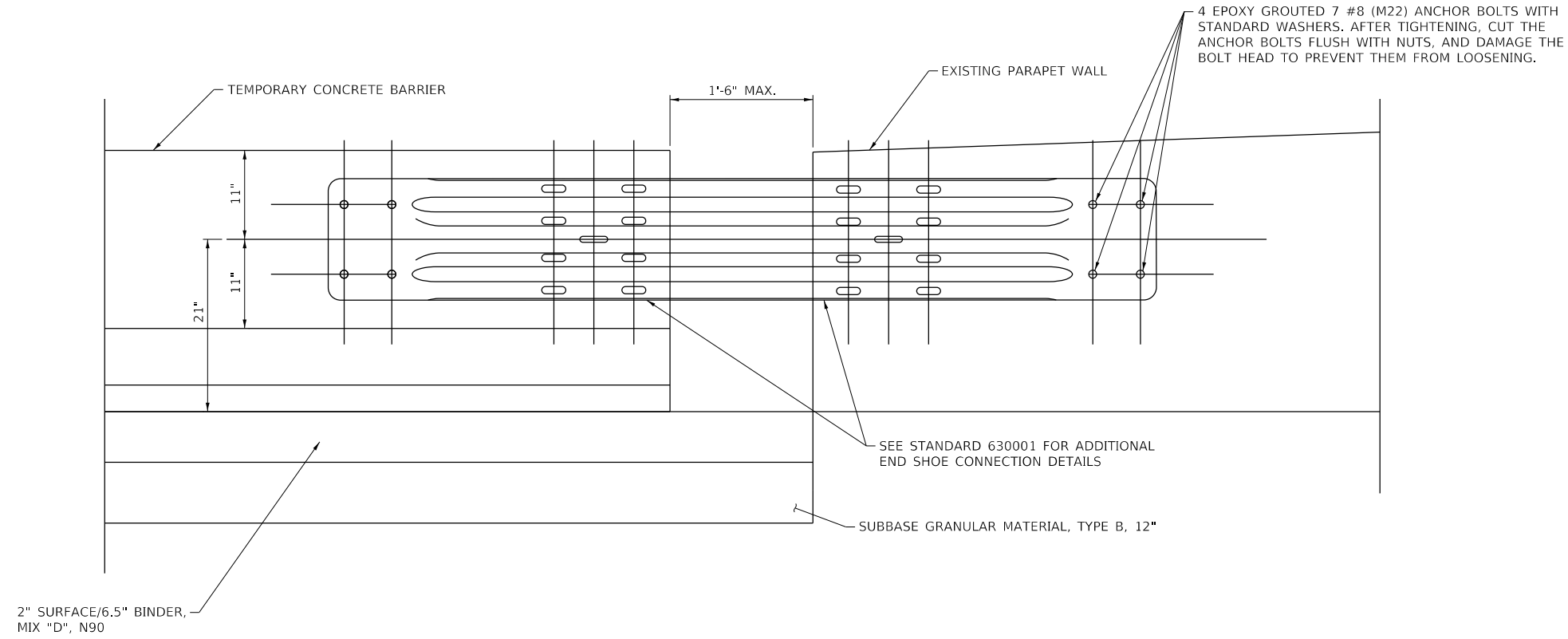


USER NAME = tneffsmith	DESIGNED - GSN	REVISED -
DRAWN - TNS	REVISIONS -	
PLOT SCALE = 80.0000 ' / in.	CHECKED - PEC	REVISED -
PLOT DATE = 3/11/2019	DATE - 2/13/2019	REVISED -

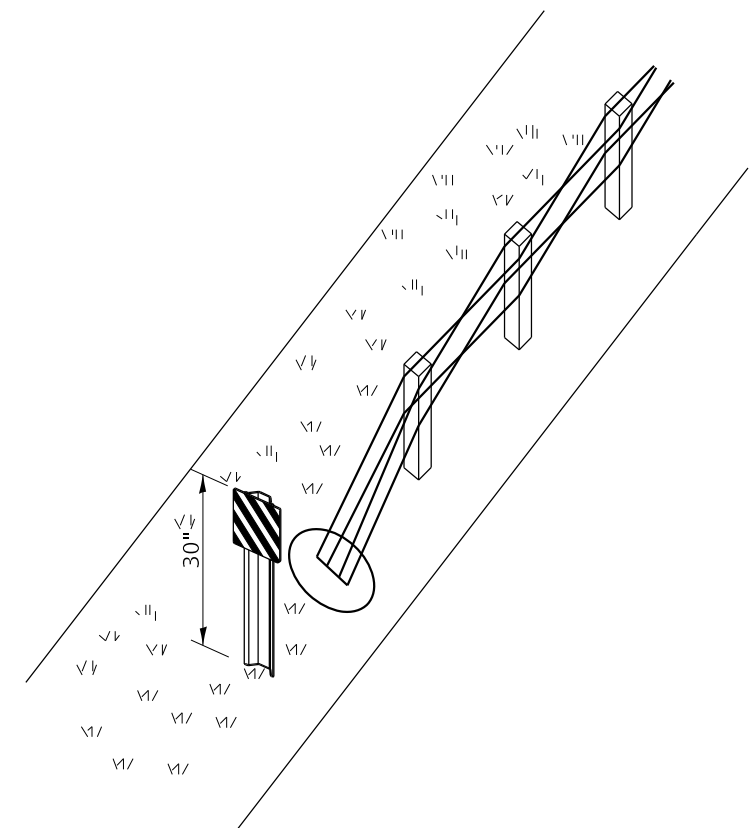
**STATE OF ILLINOIS  
DEPARTMENT OF TRANSPORTATION**

<b>EROSION AND SEDIMENT CONTROL</b>			
SCALE:	SHEET 1	OF 1	SHEETS
	STA.		TO STA.

F.A.J. RTE.	SECTION	COUNTY	TOTAL SHEETS	SHEET NO.
80	(50-2)I-4	LASALLE	25	15
CONTRACT NO. 66J74				
ILLINOIS FED. AID PROJECT				



**PROPOSED TRANSITION FROM  
TEMPORARY BARRIER TO EXISTING PERMANENT BARRIER**  
NOT TO SCALE



**HIGH TENSION CABLE MEDIAN BARRIER  
TERMINAL MARKER DETAIL**

MODEL: 4409E1\NAME: FILE NAME: S:\2019\181018\_Various Structure IDOT D3 Farnsworth PTB 1612\Work Order 13 - 140\_Temp\_Crossovers\CADD\CADD\_Sheets\0366121-ht-detail\barrier transition.dgn



USER NAME = tneffsmith	DESIGNED - GSN	REVISED -
PLOT SCALE = 100:0.0000 " = 1" / in.	DRAWN - TNS	REVISED -
PLOT DATE = 3/8/2019	CHECKED - PEC	REVISED -
	DATE - 2/13/2019	REVISED -

**STATE OF ILLINOIS  
DEPARTMENT OF TRANSPORTATION**

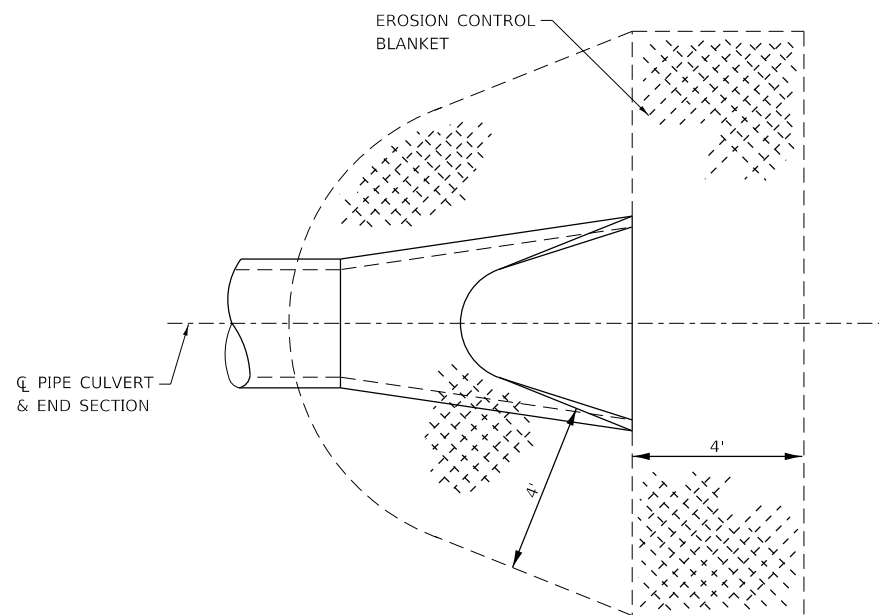
**DETAILS**

SCALE: SHEET 1 OF 4 SHEETS STA. TO STA.

F.A.J RTE.	SECTION	COUNTY	TOTAL SHEETS	SHEET NO.
80	(50-2)I-4	LASALLE	25	16
CONTRACT NO. 66J74				
ILLINOIS FED. AID PROJECT				

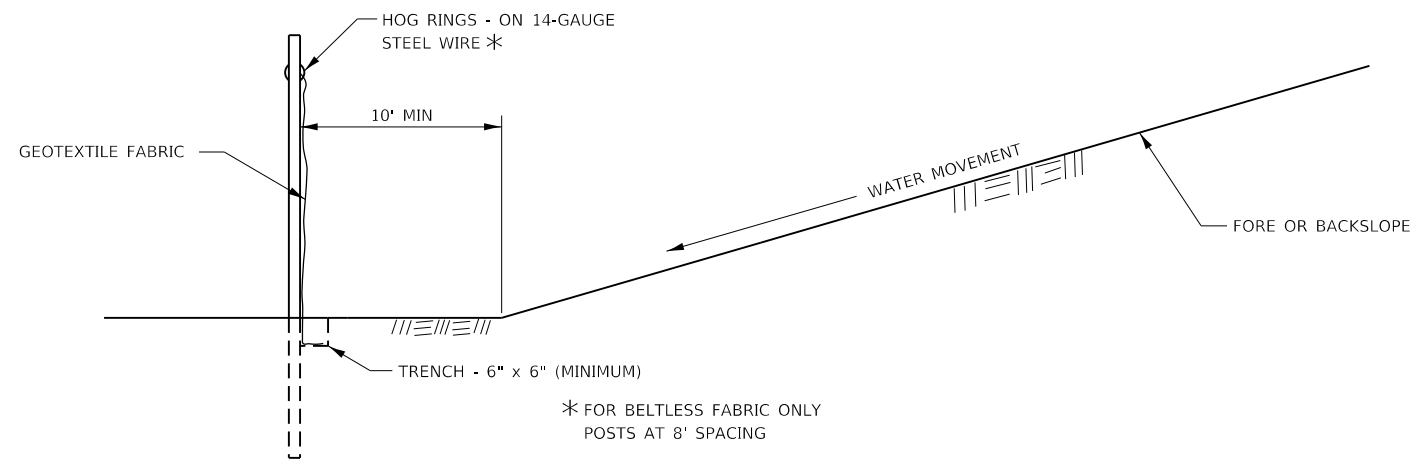
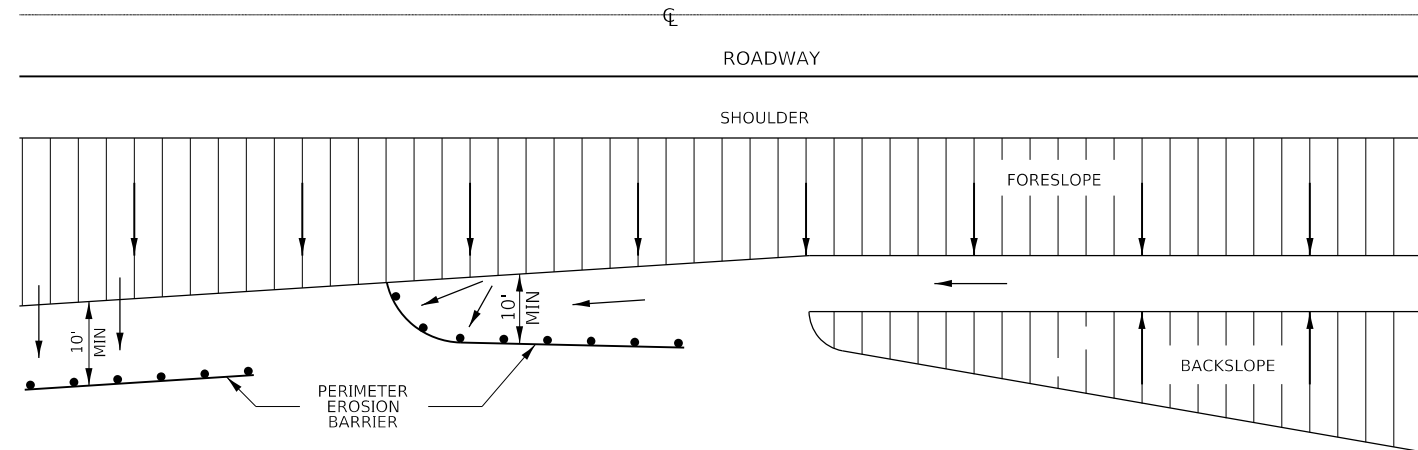


MODEL: 4100E1\MNMF5  
 FILE NAME: S:\2019\181181\181181\_018\_Various Structure IDOT D3 Fairsworth PTB 16121\Work Order 13 - 180 Temp Crossover\CADD\CADD\_Sheets\0366421-rft-detail-280-1.dgn



NOTE:  
TO BE USED AT ALL END SECTIONS

**DETAIL OF EROSION CONTROL BLANKET  
LINING AROUND END SECTION**



**DETAIL OF PERIMETER EROSION BARRIER**

**EROSION CONTROL DETAILS  
FOR PERIMETER EROSION BARRIER**



USER NAME = tneffsmith	DESIGNED - GSN	REVISED -
DRAWN - TNS	REVISIONS -	
PLOT SCALE = 100,0000' / in.	CHECKED - PEC	REVISED -
PLOT DATE = 3/8/2019	DATE - 2/13/2019	REVISED -

**STATE OF ILLINOIS  
DEPARTMENT OF TRANSPORTATION**

**DETAILS**

SCALE: SHEET 2 OF 4 SHEETS STA. TO STA.

F.A.J. RTE.	SECTION	COUNTY	TOTAL SHEETS	SHEET NO.
80	(50-2)-I-4	LASALLE	25	17
CONTRACT NO. 66J74				
ILLINOIS FED. AID PROJECT				

**GENERAL**

CLASS SI CONCRETE SHALL BE USED THROUGHOUT.

THIS SPECIFICATION COVERS SLOTTED DRAIN USED FOR THE REMOVAL OF WATER AS SHOWN ON THE PLANS.

THE SLOTTED DRAIN SHALL BE CORRUGATED PIPE CULVERT WITH INTEGRAL SLOTTED DRAINS.

BEFORE PLACING THE CONCRETE ADJACENT TO THE PIPE, THE SLOT SHALL BE COVERED BY EITHER THIN, FLAT METAL SHEETING OR BY A BOARD NOTCHED TO FIT OVER THE GRATE BARS. THIS COVERING MUST FIT CLOSELY IN THE SLOT TO PREVENT ENTRY OF CONCRETE INTO THE PIPE. PAVING OVER THE SLOTTED DRAIN WILL THEN BE ONE CONTINUOUS OPERATION OVER THE PROTECTED DRAIN. THE PROTECTION FOR THE DRAIN SLOT SHALL THEN BE REMOVED. THE PIPE SHALL DRAIN INTO THE SIDE OF THE INLET. THE OPENING WHERE THE SLOT IS REMOVED SHALL BE COVERED TO PREVENT CONCRETE FROM ENTERING THE PIPE.

THE CORRUGATED STEEL PIPE USED IN THE SLOTTED DRAIN SHALL MEET THE REQUIREMENTS OF AASHTO M36/ ASTM A7860.

THE CMP SHALL BE ALUMINIZED STEEL TYPE 2.

THE DIAMETER AND GAGE SHALL BE AS SHOWN ON THE PLAN.

STEEL GRATING SHALL MEET THE GALVANIZING REQUIREMENTS OF AASHTO M111.

THIS WORK WILL BE PAID FOR AT THE CONTRACT UNIT PRICE PER FOOT FOR SLOTTED DRAIN 18" WITH VARIABLE SLOT, AND SHALL INCLUDE ELBOWS, DRILLING HOLES IN GRATING, SUPPLYING AND PLACING A1 BARS, AND CONCRETE AND GRATING FOR DEPTH SPECIFIED ON PLANS.

USE APPROVED END CAP TO PREVENT CONCRETE ENTRY INTO THE PIPE DURING GUTTER CONSTRUCTION ON THE UPSTREAM END OF THE PIPE.

**CONNECTIONS**

THE CORRUGATED STEEL PIPE SHALL HAVE A MINIMUM OF TWO REROLLED ANNULAR ENDS.

THE SLOTTED DRAIN BANDS SHALL BE MODIFIED HUGGER BANDS TO SECURE THE PIPE AND PREVENT INFILTRATION OF THE BACKFILL.

WHEN THE SLOTTED DRAIN IS Banded TOGETHER, THE ADJACENT GRATES SHALL HAVE A MAXIMUM 3" GAP.

**GRATES**

THE GRATES SHALL BE MANUFACTURED FROM ASTM A670, GRADE 36 STEEL. THE SPACERS AND BEARING BARS (SIDES) SHALL BE 3/16" MATERIAL ±0.008".

THE SPACERS SHALL BE ON 6" CENTERS AND WELDED ON BOTH SIDES TO EACH BEARING BAR (SIDES) WITH FOUR (4) 1/4" LONG 3/16" FILLET WELDS ON EACH SIDE OF THE BEARING BAR.

THE PLATE EXTENDER SHALL BE 7 GAGE STEEL MEETING ASTM A761.

THE ENGINEER MAY CALL FOR TENSILE STRENGTH TESTS ON THE GRATE IF THE GRATE IS NOT IN COMPLIANCE WITH THE ABOVE SPACER SPECIFICATIONS. IF TENSILE STRENGTH TESTS ARE CALLED FOR, MINIMUM RESULTS FOR AN IN-PLACE SPACER PULLED PERPENDICULAR TO THE BEARING BAR SHALL BE:  
 T = 12,000 POUNDS FOR 2 1/2" GRATE  
 T = 15,000 POUNDS FOR 6" GRATE

**GALVANIZING**

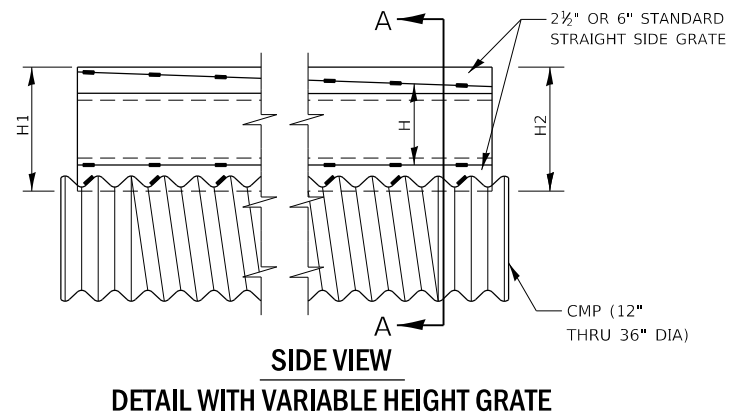
THE GRATE AND PLATE EXTENDERS SHALL BE GALVANIZED IN ACCORDANCE WITH ASTM A123 EXCEPT WITH A 2 OZ GALVANIZED COATING.

**GRATE ATTACHED TO CSP**

THE GRATE SHALL BE FILLET WELDED WITH A MINIMUM WELD 1" LONG TO THE CSP ON EACH SIDE OF THE GRATE AT EVERY OTHER CORRUGATION.

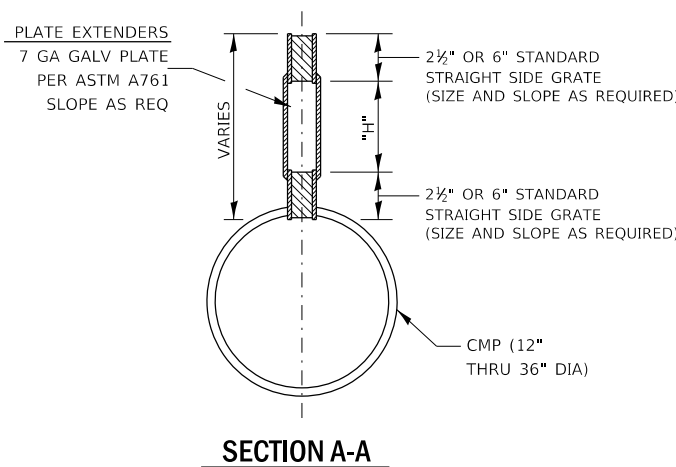
**TOLERANCES - FINISHED SLOTTED DRAIN - 20' LENGTH**

VERTICAL BOW = ±3/8"  
 HORIZONTAL BOW = ±3/8"  
 TWIST = ±1/2"



LOADING CONDITION	MAX. EXTENDER HEIGHT - "H"
H20/H25 + 750 PSI CONCRETE	19"

\* 125 PSI TIRE PRESSURE



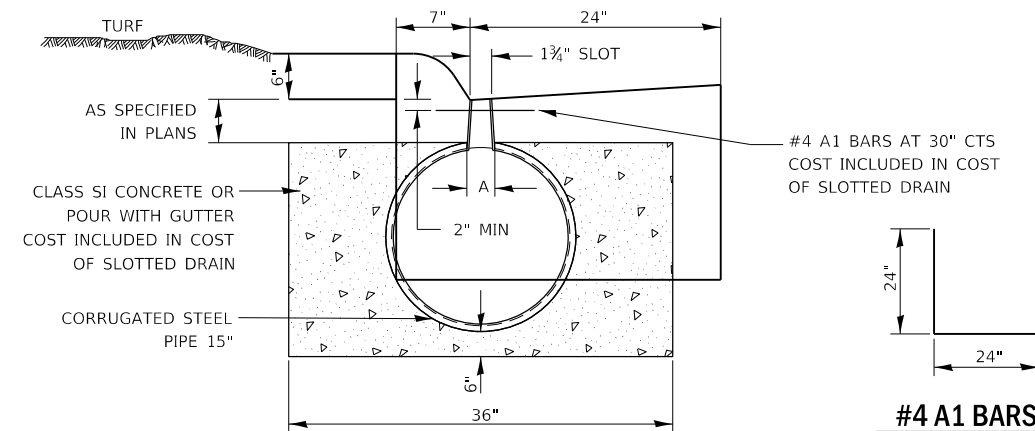
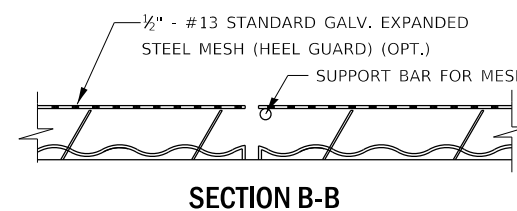
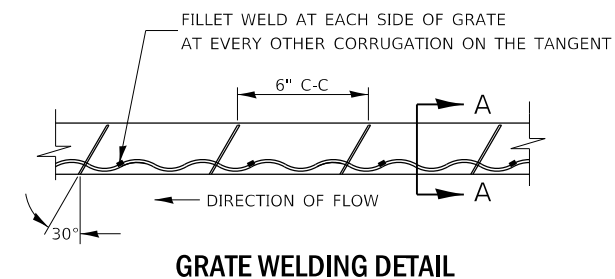
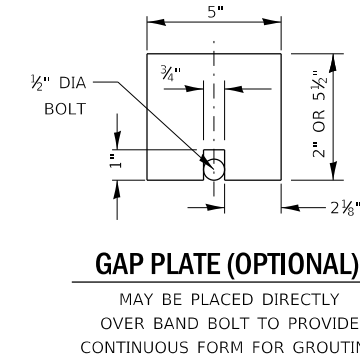
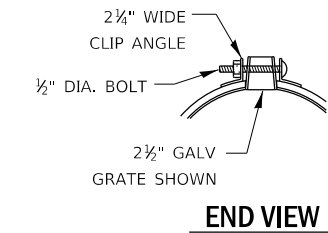
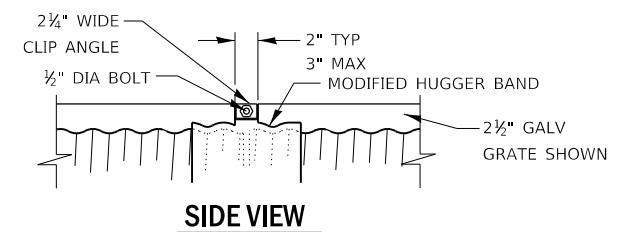
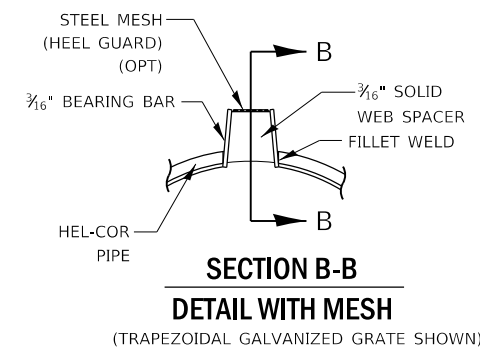
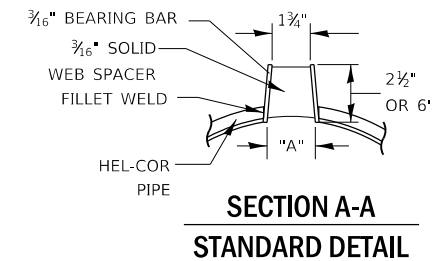
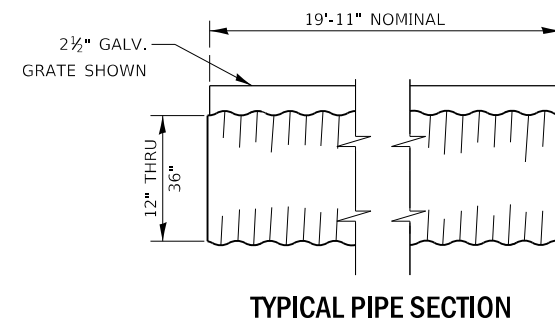
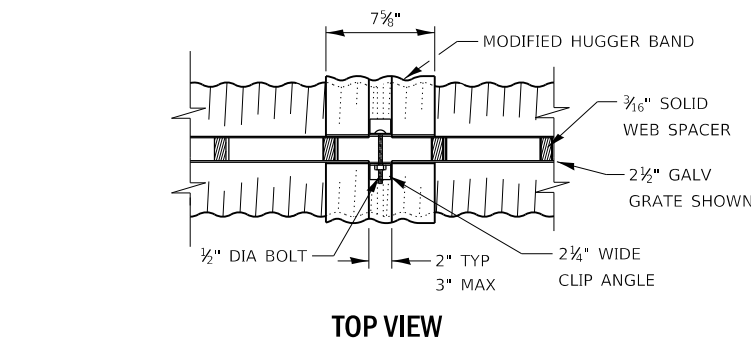
GAGE OF PIPE	DIAMETER OF PIPE					
	12"	15"	18"	24"	30"	36"
16	X	X	X	X	X	X
14	X	X	X	X	X	X
12	NA	NA	NA	NA	X	X

GRATE TYPE	"A"
VERT	2 1/2"
TRAP	6"

VERT = VERTICAL  
 TRAP = TRAPAZOIDAL

**SLOTTED DRAIN NOTES**

- GRATING IS AVAILABLE IN DEPTHS OF 2 1/2" AND 6".
- VERTICAL GRATING (STRAIGHT SIDES) WITH VERTICAL SPACERS IS ALSO AVAILABLE.
- FOR 6" VERTICAL & TRAPEZOIDAL REQUIREMENTS, THE SLOTTED DRAIN BAND MAY BE FURNISHED WITH THE 4: TECHCO BAND ANGLE.
- DIMENSIONS ARE SUBJECT TO MANUFACTURING TOLERANCES.
- REFERENCE CONTECH BAND MANUAL DWG NO 1002697 FOR BAND DETAILS.
- REFERENCE CONTECH SLOTTED DRAIN DWG NO 1002697.
- DIMENSIONS FOR H1 AND H2 AS REQUIRED.
- H1 AND H2 MEASURED FROM TOP OF GRATE TO BOTTOM OF GRATE.



MODEL: 4400BELMAME; FILE NAME: S:\2019\181181018\_Various Structure IDOT D3\_Farmsworth\_PTB\_161211\Work Order 13 - 140\_Temp\_Crossover\CADD\CADD\_Sheets\DS66421-1-16-detail-601-2.dgn

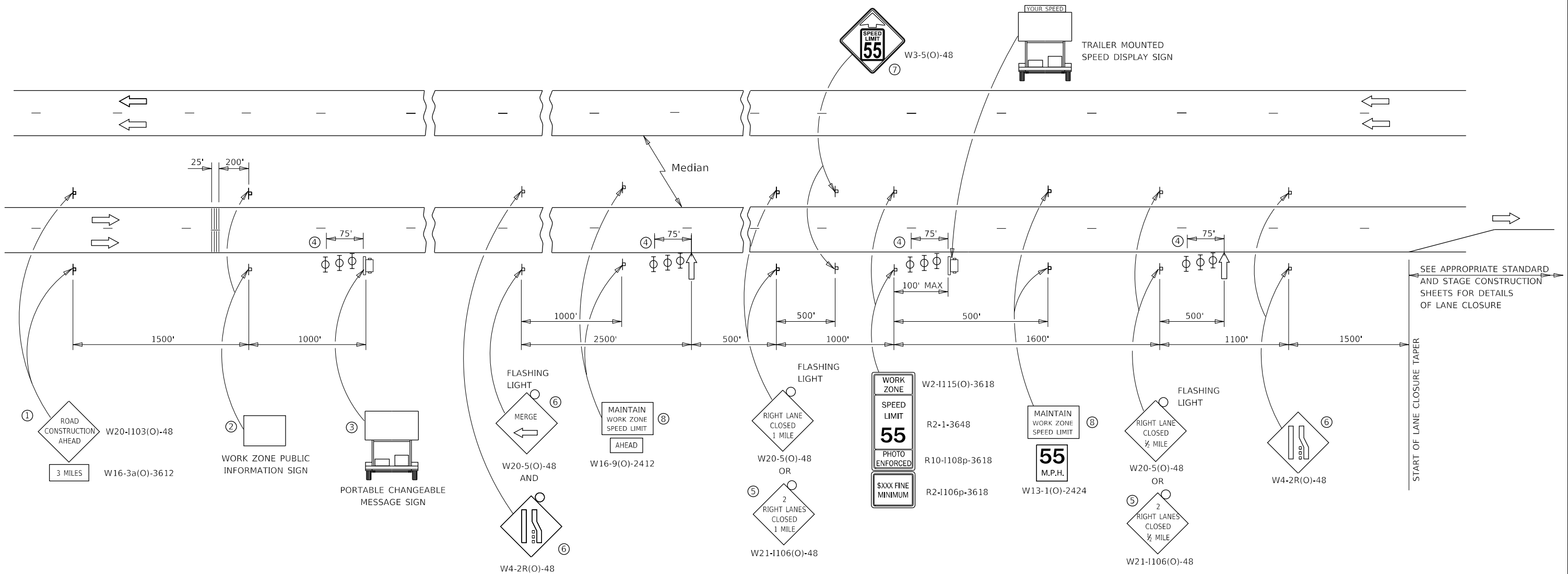


USER NAME = tneffsmith	DESIGNED - GSN	REVISED -
PLOT SCALE = 100,0000' / in.	DRAWN - TNS	REVISED -
PLOT DATE = 3/8/2019	CHECKED - PEC	REVISED -
	DATE - 2/13/2019	REVISED -

**STATE OF ILLINOIS  
 DEPARTMENT OF TRANSPORTATION**

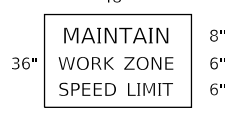
SCALE:				SHEET 3 OF 4 SHEETS				STA. TO STA.			
--------	--	--	--	---------------------	--	--	--	--------------	--	--	--

F.A.J RTE.	SECTION	COUNTY	TOTAL SHEETS	SHEET NO.
80	(50-2)I-4	LASALLE	25	18
CONTRACT NO. 66J74				
ILLINOIS FED. AID PROJECT				



- ① THE ROAD CONSTRUCTION AHEAD SIGN SHALL BE LOCATED 3 MILES IN ADVANCE OF THE PROJECT LIMITS.
- ② THE MESSAGE AND SIZE OF THE WORK ZONE PUBLIC INFORMATION SIGN SHALL BE AS SPECIFIED BY THE DEPARTMENT.
- ③ TO BE PLACED IN THE MEDIAN WHEN FEASIBLE. THE MESSAGE BOARD SHALL BE USED TO DISPLAY STATUS OF LANES WITHIN THE PROJECT. THE PRIMARY MESSAGES SHALL BE:  
 "RIGHT LANE CLOSED" / " x MILES AHEAD"  
 "LEFT LANE CLOSED" / " x MILES AHEAD"  
 "ALL LANES OPEN"
- ④ THREE, TYPE II BARRICADES, DRUMS, OR VERTICAL BARRICADES AT 25' CENTERS.
- ⑤ THIS SIGN SHALL BE USED WHEN 2 LANES ARE CLOSED.
- ⑥ WHEN THE LEFT LANE IS CLOSED, SWITCH THESE TWO SIGNS AND THE DIRECTION OF THE MERGE ARROW.
- ⑦ THIS SIGN SHALL ONLY BE USED IF THE EXISTING SPEED LIMIT IS GREATER THAN 65 MPH.

⑧ 48"x36" FLUORESCENT ORANGE SIGN WITH BLACK LETTERS.



- ↑ ARROW BOARD
- ☐ PORTABLE CHANGEABLE MESSAGE SIGN
- ⊥ SIGN
- ⊕ TYPE II BARRICADE, DRUM, OR VERTICAL BARRICADE WITH MONODIRECTIONAL FLASHING LIGHT
- ▨ TEMPORARY PORTABLE RUMBLE STRIPS

**GENERAL NOTE:**

THIS STANDARD IS USED WHERE AT ANY TIME A LANE IS CLOSED ON A FREEWAY/EXPRESSWAY.

WHEN THE LEFT LANE IS CLOSED, LEFT LANE CLOSED SIGNS SHALL BE SUBSTITUTED FOR THE RIGHT LANE CLOSED SIGNS.

THE FIRST TWO SIGNS AND THE MESSAGE BOARD ARE STATIONARY. THE OTHER SIGNS AND ARROWBOARDS SHALL BE MOVED AS NECESSARY TO MAINTAIN THE REQUIRED DISTANCE FROM THE START OF THE LANE CLOSURE TAPER(S).

SEE SPECIAL PROVISIONS.

ALL DIMENSIONS ARE IN INCHES UNLESS OTHERWISE SHOWN.

MODEL: Default  
 FILE: \\nas0101\pub\harcourt\p\11001\Documents\DOT - Offices\Dir\ct 3\Projects\03667\NC\030303\CA\Sheets\Revisions to Consultant - Sheets\03667-1-10-1.dgn  
 QUIGG ENGINEERING INC



USER NAME = corcoranlm	DESIGNED - GSN	REVISED -
PLOT SCALE = 100,0000' / in.	DRAWN - TNS	REVISED -
PLOT DATE = 4/12/2019	CHECKED - PEC	REVISED -
	DATE - 2/13/2019	REVISED -

**STATE OF ILLINOIS  
DEPARTMENT OF TRANSPORTATION**

**STANDARD 701400 (SPECIAL)**

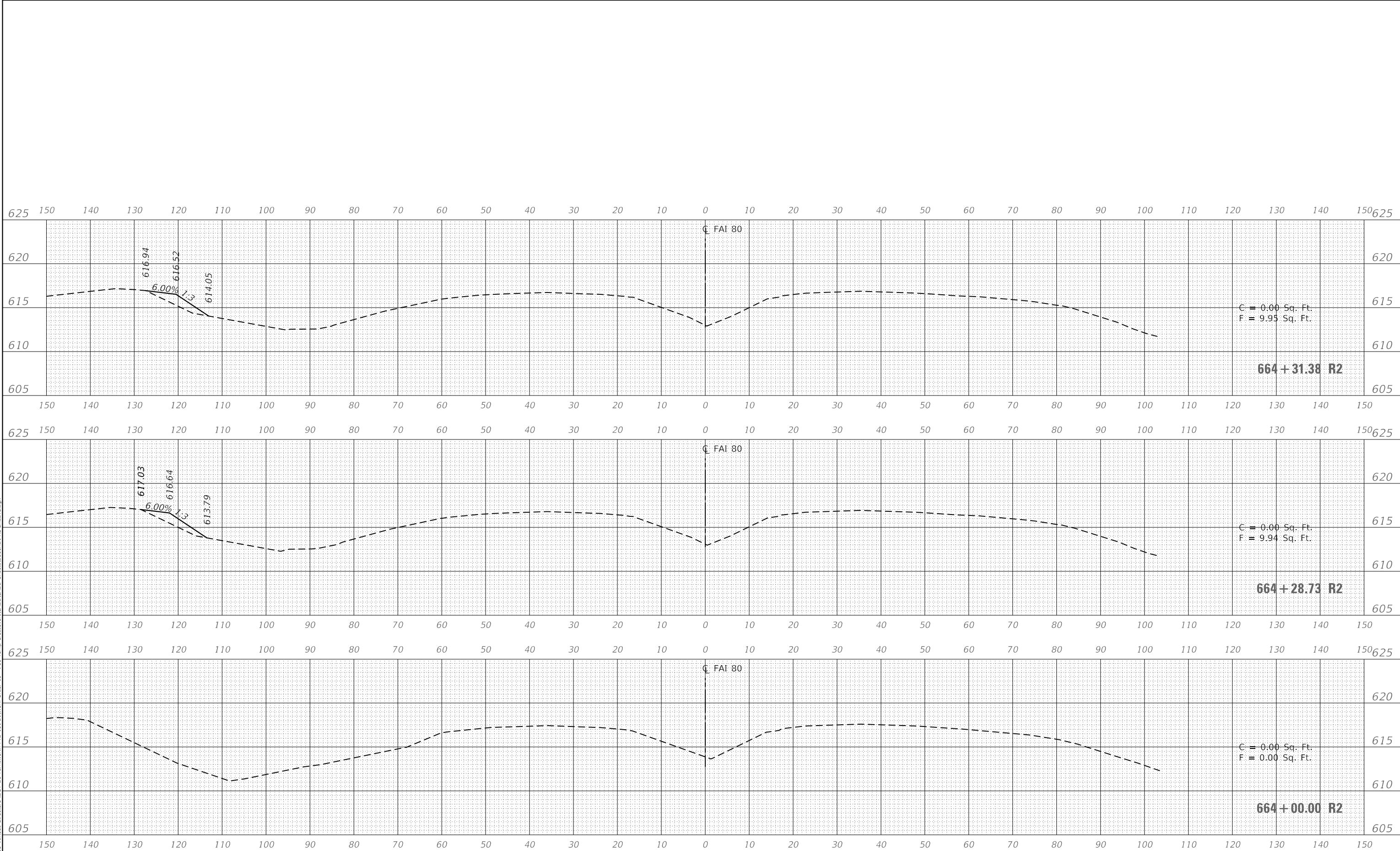
SCALE: SHEET 4 OF 4 SHEETS STA. TO STA.

F.A.J. RTE.	SECTION	COUNTY	TOTAL SHEETS	SHEET NO.
80	(50-2)-I-4	LASALLE	25	19
CONTRACT NO. 66J74				
ILLINOIS FED. AID PROJECT				

FINAL SURVEY NO.	SURVEYED	DATE
NOTE BOOK	PLOTTED	
AREAS CHECKED	TEMPLATE	
	AREAS	

ORIGINAL SURVEY NO.	SURVEYED	DATE
NOTE BOOK	PLOTTED	
AREAS CHECKED	TEMPLATE	
	AREAS	

MODEL: S:\MODEL\NAMES  
 FILE NAME: S:\2018\181018 Various Structure IDOT 03 Farnsworth PTB 16121\Work Order 13 - E80 Temp Crossovers\CADD\CADD Sheets\0366121\AS-SHEETS.dgn



QUIGG ENGINEERING INC

USER NAME	= tneffsmith
PLOT SCALE	= 20.0009 ' / in.
PLOT DATE	= 3/8/2019

DESIGNED	- GSN
DRAWN	- TNS
CHECKED	- PEC
DATE	- 2/13/2019

REVISED	-
REVISED	-
REVISED	-
REVISED	-

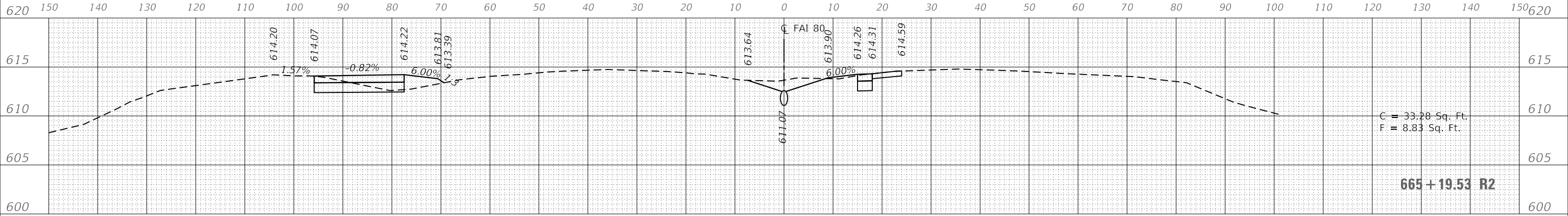
STATE OF ILLINOIS  
 DEPARTMENT OF TRANSPORTATION

TEMPORARY CROSSOVERS CROSS SECTIONS

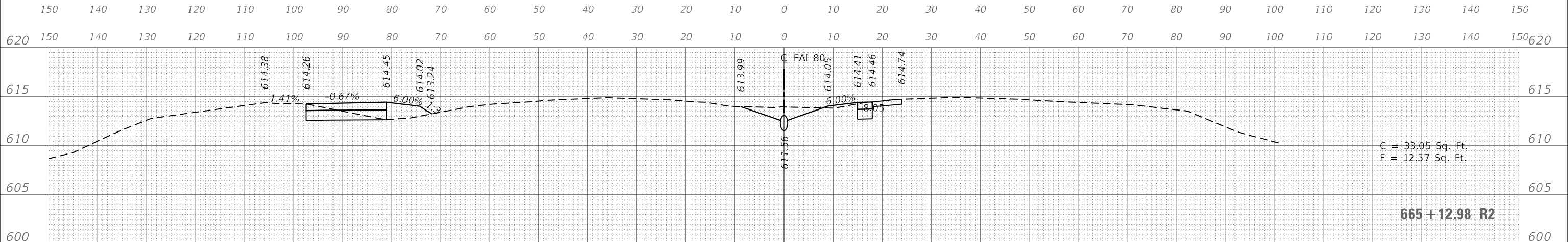
SCALE: 1"=10' SHEET 1 OF 6 SHEETS STA. 664+00.00 R2 TO STA. 664+31.38 R2

F.A. RTE.	SECTION	COUNTY	TOTAL SHEETS	SHEET NO.
80	(50-2)J-4	LASALLE	25	20
CONTRACT NO. 66J74				
ILLINOIS FED. AID PROJECT				

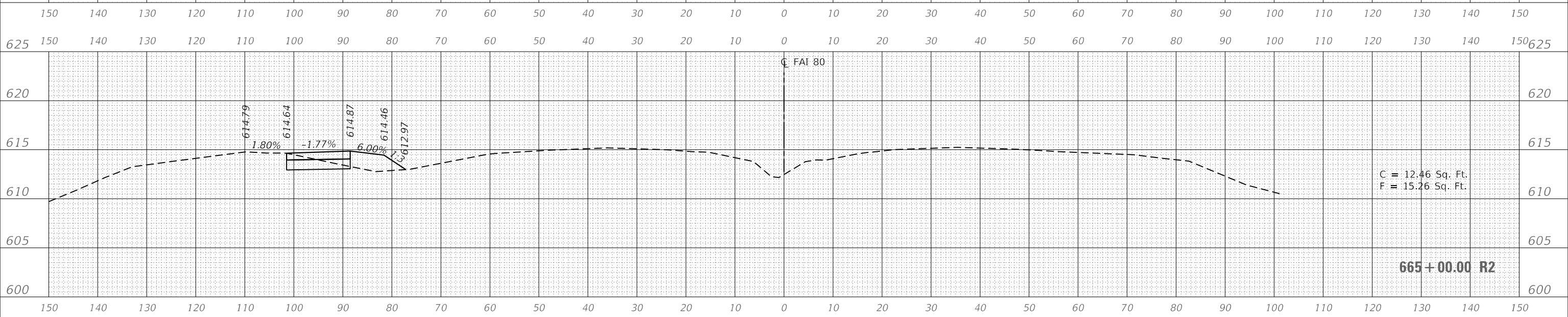
DATE	
BY	
SURVEYED	
PLOTTED	
TEMPLATE	
AREAS CHECKED	
FINAL SURVEY NO.	
NOTE BOOK NO.	
AREAS CHECKED	



DATE	
BY	
SURVEYED	
PLOTTED	
TEMPLATE	
AREAS CHECKED	
ORIGINAL SURVEY NO.	
NOTE BOOK NO.	
AREAS CHECKED	



DATE	
BY	
SURVEYED	
PLOTTED	
TEMPLATE	
AREAS CHECKED	
ORIGINAL SURVEY NO.	
NOTE BOOK NO.	
AREAS CHECKED	



MODEL: SP0DELNAME1  
FILE NAME: S:\2018\181818\18 Various Structure DOT 03 Farnsworth PTB 16121\Work Order 13 - E-80 Temp Crossovers\CADD\CADD Sheets\0366121\AS-SHEETS.dgn



USER NAME = tneffsmith	DESIGNED - GSN	REVISED -
PLOT SCALE = 20.0009 ' / in.	DRAWN - TNS	REVISED -
PLOT DATE = 3/8/2019	CHECKED - PEC	REVISED -
	DATE - 2/13/2019	REVISED -

**STATE OF ILLINOIS  
DEPARTMENT OF TRANSPORTATION**

**TEMPORARY CROSSOVERS CROSS SECTIONS**

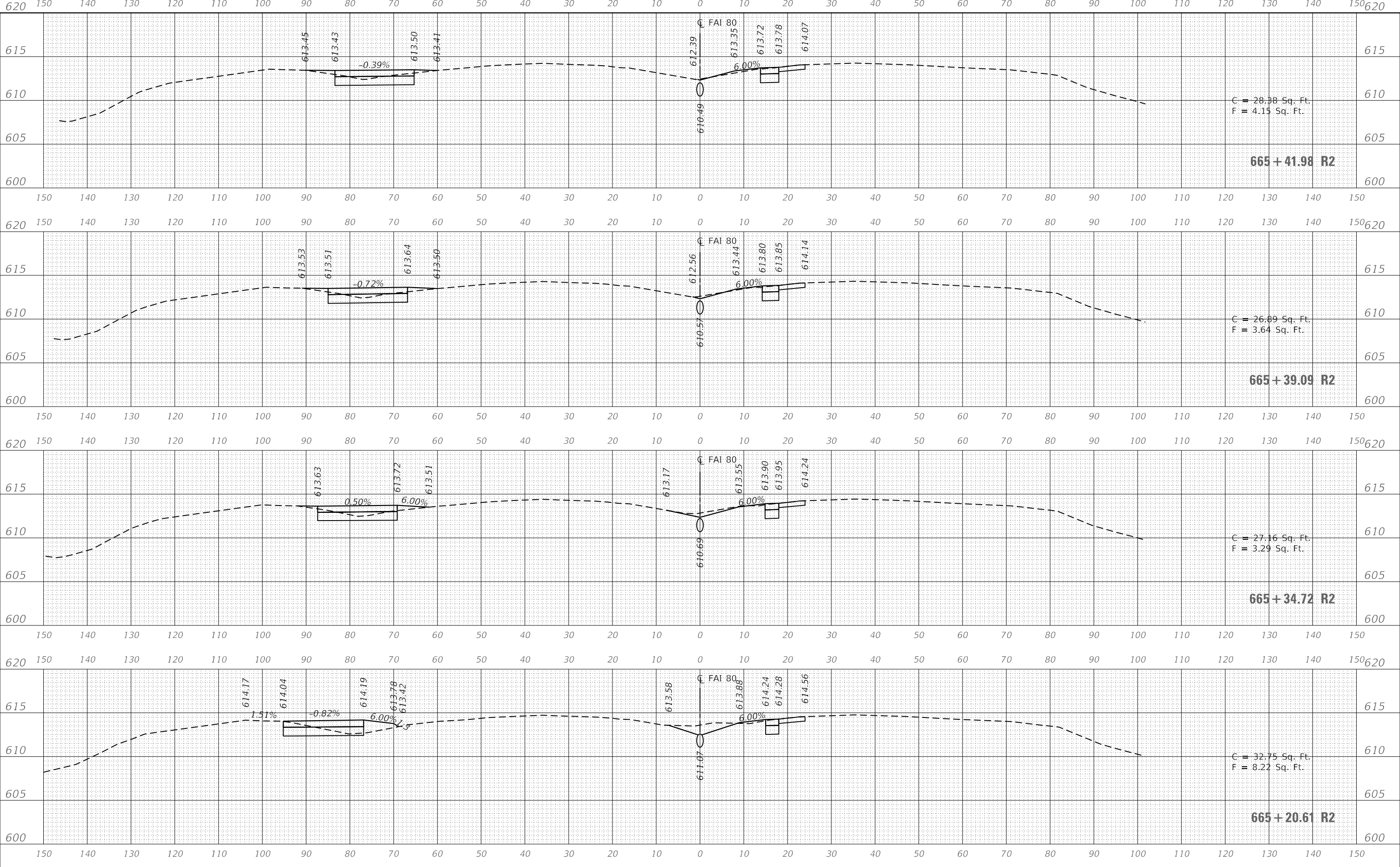
SCALE: 1"=10'      SHEET 2 OF 6 SHEETS      STA. 665+00.00 R2 TO STA. 665+19.53 R2

F.A. RTE.	SECTION	COUNTY	TOTAL SHEETS	SHEET NO.
80	(50-2)I-4	LASALLE	25	21
CONTRACT NO. 66J74				
ILLINOIS FED. AID PROJECT				

FINAL SURVEY NO.	SURVEYED	DATE
NOTE BOOK	PLOTTED	
AREAS CHECKED	TEMPLATE	
	AREAS CHECKED	

ORIGINAL SURVEY NO.	SURVEYED	DATE
NOTE BOOK	PLOTTED	
AREAS CHECKED	TEMPLATE	
	AREAS CHECKED	

MODEL: S:\MODEL\NAMES  
 FILE NAME: S:\2018\180118 Various Structure DOT 03 Farnsworth PTB 16121\Work Order 13 - L&B Temp Crossovers\CADD\CADD Sheets\0366121\AS-SHEETS.dgn



USER NAME = tneffsmith	DESIGNED - GSN	REVISED -
PLOT SCALE = 20.0009' / in.	DRAWN - TNS	REVISED -
PLOT DATE = 3/8/2019	CHECKED - PEC	REVISED -
	DATE - 2/13/19	REVISED -

**STATE OF ILLINOIS  
 DEPARTMENT OF TRANSPORTATION**

**TEMPORARY CROSSOVERS CROSS SECTIONS**

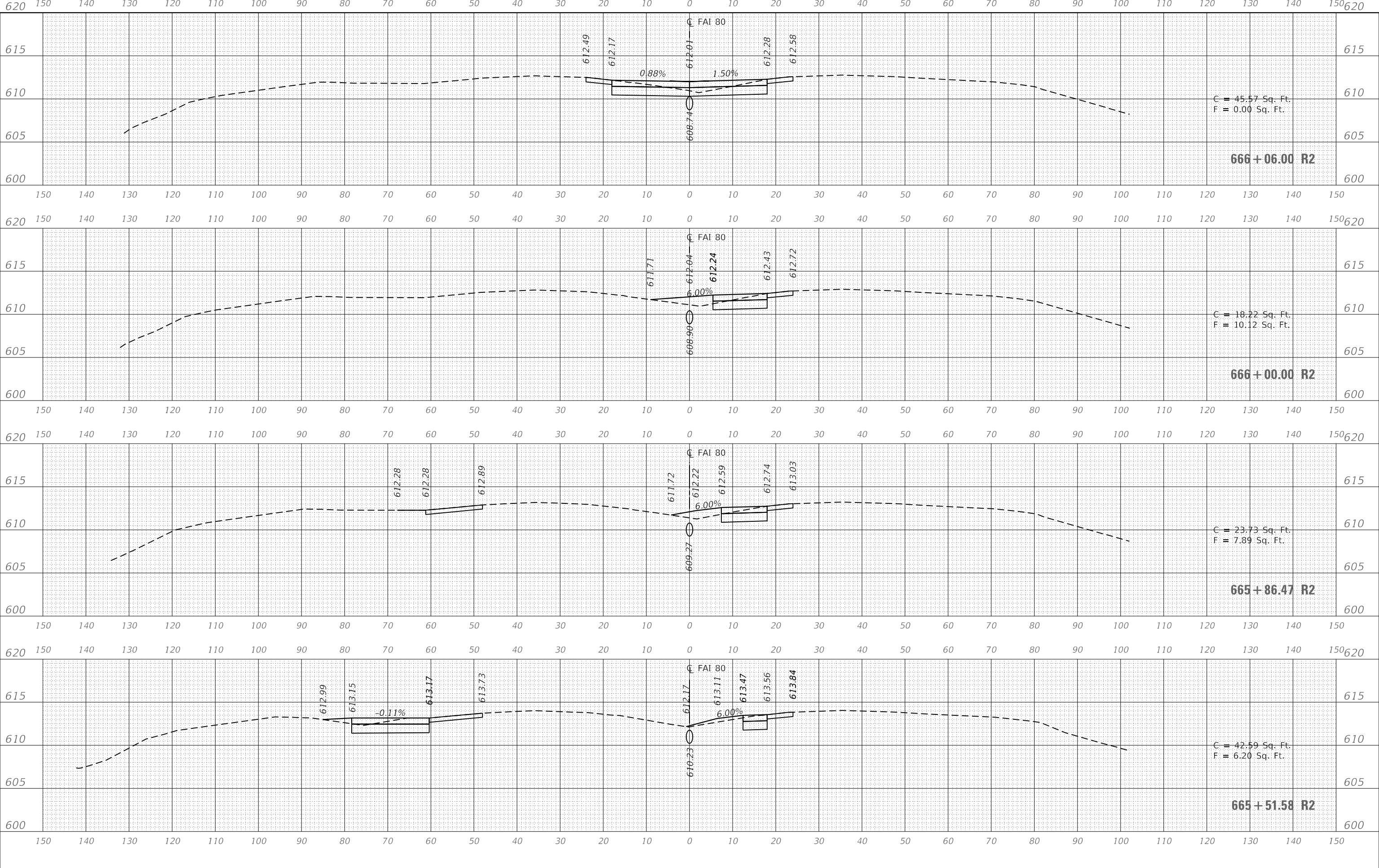
SCALE: 1"=10' SHEET 3 OF 6 SHEETS STA. 665+20.61 R2 TO STA. 665+41.98 R2

F.A. RTE. 80	SECTION (50-2)I-4	COUNTY LASALLE	TOTAL SHEETS 25	SHEET NO. 22
ILLINOIS FED. AID PROJECT			CONTRACT NO. 66J74	

FINAL SURVEY NO.	SURVEYED AREAS CHECKED
DATE	PLOTTED
BY	TEMPLATE
	AREAS CHECKED

ORIGINAL SURVEY NO.	SURVEYED AREAS CHECKED
DATE	PLOTTED
BY	TEMPLATE
	AREAS CHECKED

MODEL: S:\MODEL\NAMES  
 FILE NAME: S:\2018\181018 Various Structure DOT 03 Farnsworth PTB 16121\Work Order 13 - E-80 Temp Crossovers\CADD\CADD Sheets\0366121\AS-SHEETS.dgn



USER NAME = tneffsmith	DESIGNED - GSN	REVISED -
PLOT SCALE = 20.0009' / in.	DRAWN - TNS	REVISED -
PLOT DATE = 3/8/2019	CHECKED - PEC	REVISED -
	DATE - 2/13/2019	REVISED -

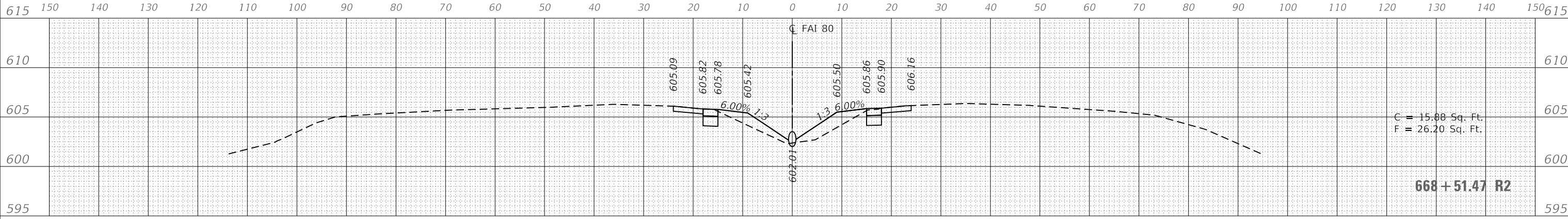
**STATE OF ILLINOIS  
 DEPARTMENT OF TRANSPORTATION**

**TEMPORARY CROSSOVERS CROSS SECTIONS**

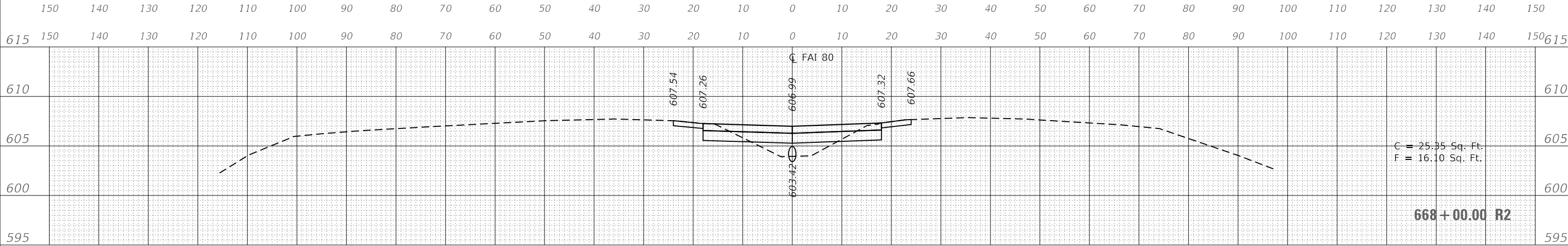
SCALE: 1"=10' SHEET 4 OF 6 SHEETS STA. 665+51.58 R2 TO STA. 666+06.00 R2

F.A. RTE. 80	SECTION (50-2)I-4	COUNTY LASALLE	TOTAL SHEETS 25	SHEET NO. 23
CONTRACT NO. 66J74				
ILLINOIS FED. AID PROJECT				

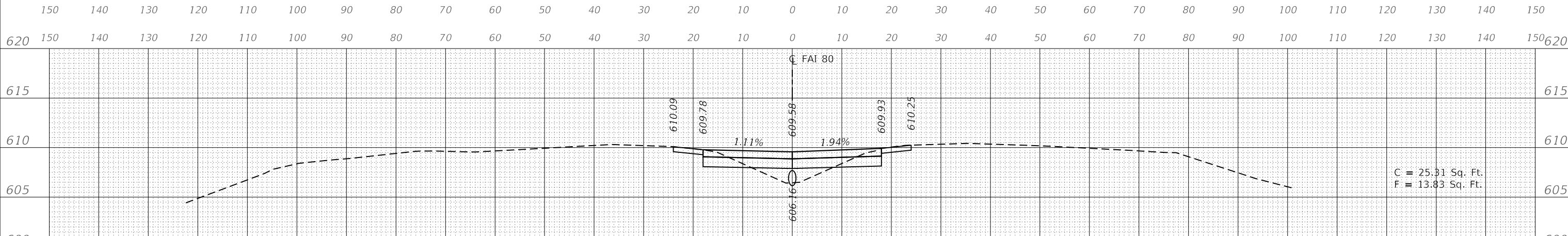
DATE	
BY	
FINAL SURVEY	SURVEYED
NOTE BOOK	PLOTTED
NO.	TEMPLATE
	AREAS CHECKED
	AREAS CHECKED



DATE	
BY	
FINAL SURVEY	SURVEYED
NOTE BOOK	PLOTTED
NO.	TEMPLATE
	AREAS CHECKED
	AREAS CHECKED



DATE	
BY	
ORIGINAL SURVEY	SURVEYED
NOTE BOOK	PLOTTED
NO.	TEMPLATE
	AREAS CHECKED
	AREAS CHECKED



MODEL: S:\MODEL\NAMES  
 FILE NAME: S:\2018\181018 Various Structure DOT 03 Farnsworth PTB 16121\Work Order 13 - E80 Temp Crossovers\CADD\Sheets\0366121\AS-SHEETS.dgn



USER NAME = tneffsmith	DESIGNED - GSN	REVISED -
PLOT SCALE = 20.0009 ' / in.	DRAWN - TNS	REVISED -
PLOT DATE = 3/11/2019	CHECKED - PEC	REVISED -
	DATE - 2/13/2019	REVISED -

STATE OF ILLINOIS  
 DEPARTMENT OF TRANSPORTATION

TEMPORARY CROSSOVERS CROSS SECTION

SCALE: 1"=10' SHEET 5 OF 6 SHEETS STA. 667+00.00 R2 TO STA. 668+51.47 R2

F.A. RTE.	SECTION	COUNTY	TOTAL SHEETS	SHEET NO.
80	(50-2)I-4	LASALLE	25	24
CONTRACT NO. 66J74				
ILLINOIS FED. AID PROJECT				



