

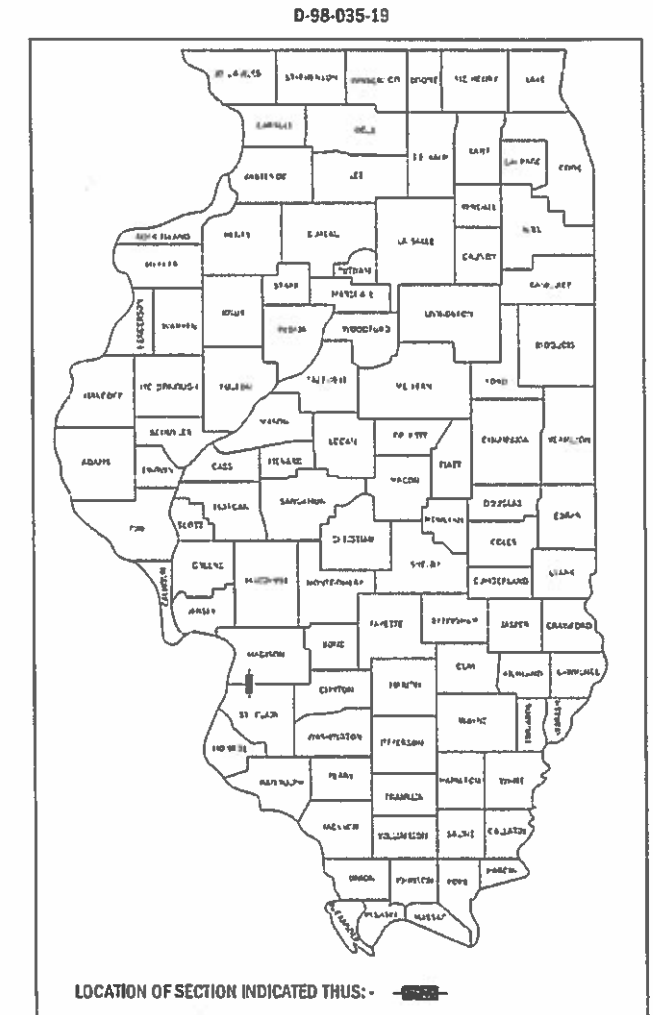
SEE SHEET NO. 2 FOR INDEX OF SHEETS AND  
STRUCTURE OMISSIONS

STATE OF ILLINOIS  
DEPARTMENT OF TRANSPORTATION

**PROPOSED  
HIGHWAY PLANS**

**FAI ROUTE 255 (I-255)  
SECTION DIST 8 PATCHING 2019-1  
ROADWAY AND BRIDGE DECK PATCHING  
FROM 0.4 MI SOUTH OF MOUSETTE LANE TO COLLINSVILLE ROAD  
MADISON & ST. CLAIR COUNTIES**

F.A.I. R.T.E.	SECTION	COUNTY	TOTAL SHEETS	SHEET NO.
255	DIST 8 PATCHING 2019-1	VARIOUS	21	1
ILLINOIS			CONTRACT NO. 76M26	



**TRAFFIC DATA**

FUNCTIONAL CLASSIFICATION: INTERSTATE

**IL 157 TO MOUSETTE LANE**

2017 ADT (ACTUAL): 48400  
2019 ADT (ESTIMATED): 49100  
2039 ADT (ESTIMATED): 56400  
SU: 2.7%  
MU: 13.8%

**MOUSETTE LANE TO IL 15**

2017 ADT (ACTUAL): 71300  
2019 ADT (ESTIMATED): 72300  
2039 ADT (ESTIMATED): 83100  
SU: 2.1%  
MU: 9.8%

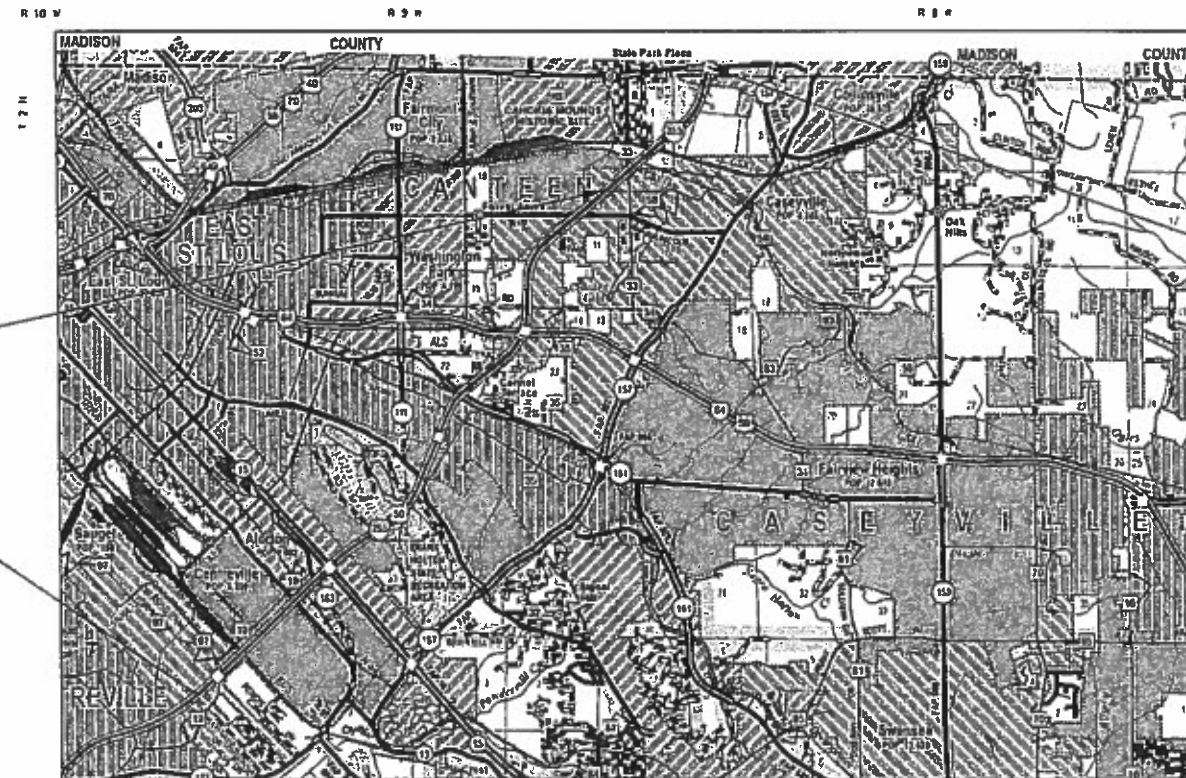
**IL 15 TO I-64**

2017 ADT (ACTUAL): 57400  
2019 ADT (ESTIMATED): 58200  
2039 ADT (ESTIMATED): 66900  
SU: 2.8%  
MU: 12.4%

**I-64 TO COLLINSVILLE ROAD**

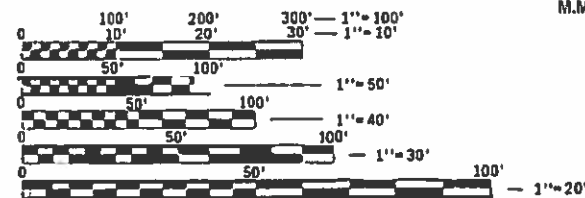
2017 ADT (ACTUAL): 54600  
2019 ADT (ESTIMATED): 55400  
2039 ADT (ESTIMATED): 63700  
SU: 2.3%  
MU: 11.0%

C-98-048-19



SN 082-0246  
M.M. 21.90 TO M.M. 21.96

BEGIN PROJECT  
M.M. 14.72  
LAT: 38.562282  
LONG: -90.135165



FULL SIZE PLANS HAVE BEEN PREPARED USING STANDARD  
ENGINEERING SCALES. REDUCED SIZED PLANS WILL NOT  
CONFORM TO STANDARD SCALES. IN MAKING MEASUREMENTS  
ON REDUCED PLANS, THE ABOVE SCALES MAY BE USED.

J.U.L.I.E.  
JOINT UTILITY LOCATION INFORMATION FOR EXCAVATION  
1-800-892-0123  
OR 811

PROJECT ENGINEER: TIM PADGETT (618)346-3325  
PROJECT MANAGER: PHIL FREIMUTH (618)346-3194

CONTRACT NO. 76M26



GROSS LENGTH = 48,048 FEET = 9.10 MILES  
NET LENGTH = 42,022 FEET = 7.96 MILES

STATE OF ILLINOIS  
DEPARTMENT OF TRANSPORTATION

SUBMITTED *March 24 2019*  
*Keith Roberts*  
REGIONAL ENGINEER

*May 10 2019*  
*Paul A. Etk*  
ENGINEER OF DESIGN AND ENVIRONMENT

*May 10 2019*  
*Paul A. Etk*  
DIRECTOR OF HIGHWAYS PROJECT IMPLEMENTATION

PRINTED BY THE AUTHORITY  
OF THE STATE OF ILLINOIS

## INDEX OF SHEETS

1	COVER SHEET
2	INDEX OF SHEETS, HIGHWAY STANDARDS, GENERAL NOTES, COMMITMENTS, AND STRUCTURE OMISSIONS
3-4	SUMMARY OF QUANTITIES
5-6	ROADWAY TYPICAL SECTIONS
7	ROADWAY SCHEDULE OF QUANTITIES
8	SN 082-0246 STRUCTURE SCHEDULE OF QUANTITIES
9	CHANGEABLE MESSAGE SIGN DETAIL
10-12	DETOUR SIGNING PLAN
13	SN 082-0246 STRUCTURE PLAN VIEW
14	SN 082-0246 PARTIAL DEPTH PATCH DETAILS
15-16	BUTT JOINT DETAILS
17-21	SN 082-0246 STRUCTURE DETAILS

## HIGHWAY STANDARDS

000001-07	STANDARD SYMBOLS, ABBREVIATIONS AND PATTERNS
001001-02	AREAS OF REINFORCEMENT BARS
001006	DECIMAL OF AN INCH AND OF A FOOT
420001-09	PAVEMENT JOINTS
442001-04	CLASS A PATCHES
701400-09	APPROACH TO LANE CLOSURE, FREEWAY/ EXPRESSWAY
701401-12	LANE CLOSURE, FREEWAY/ EXPRESSWAY
701411-09	LANE CLOSURE, MULTILANE, AT ENTRANCE OR EXIT RAMP, FOR SPEEDS $\geq$ 45 MPH
701428-01	TRAFFIC CONTROL SETUP AND REMOVAL FREEWAY/ EXPRESSWAY
701446-09	TWO LANE CLOSURE, FREEWAY/ EXPRESSWAY
701451-05	RAMP CLOSURE FREEWAY/ EXPRESSWAY
701456-05	PARTIAL EXIT RAMP CLOSURE FREEWAY/ EXPRESSWAY
701901-08	TRAFFIC CONTROL DEVICES

## GENERAL NOTES

- ① ILLINOIS STATE LAW REQUIRES A 48-HOUR NOTICE TO BE GIVEN TO UTILITIES BEFORE DIGGING. FIELD MARKING OF FACILITIES MAY BE OBTAINED BY CONTACTING J.U.L.I.E. (1-800-892-0123 OR 811) OR FOR NON-MEMBERS THE UTILITY COMPANY DIRECTLY.
- ② THE CONTRACTOR AND THE ENGINEER SHALL BE AWARE THAT NO SURVEY WAS PERFORMED FOR THIS PROJECT. THE STATIONING, TOPOGRAPHY, AND QUANTITIES SHOWN IN THE PLANS WERE CREATED USING MICROFILM AND FIELD MEASUREMENTS. ALL SHALL BE ASSUMED TO BE APPROXIMATE. THE CONTRACTOR SHALL VERIFY DIMENSIONS AND CONDITIONS IN THE FIELD PRIOR TO CONSTRUCTION AND ORDERING OF MATERIALS.
- ③ THE CONTRACTOR SHALL PROVIDE POSITIVE AND ADEQUATE DRAINAGE AT ALL TIMES.
- ④ THE DEPARTMENT STRONGLY ENCOURAGES THE PRIME CONTRACTOR AND THEIR APPROVED SUB-CONTRACTORS TO HIRE MINORITY, WOMEN AND DISADVANTAGED INDIVIDUALS FROM ITS FEDERALLY FUNDED HIGHWAY CONSTRUCTION CAREERS TRAINING PROGRAM (HCCTP) TO HELP MEET WORKFORCE AND TRAINEE GOALS. THIS PROGRAM IS TRAINING MINORITIES, WOMEN AND DISADVANTAGED INDIVIDUALS IN HIGHWAY CONSTRUCTION-RELATED SKILLS, E.G., MATH FOR THE TRADES, JOB READINESS, TECHNICAL SKILLS COURSEWORK (CARPENTRY, CONCRETE FLATWORK, BLUEPRINT READING, SITE PLANS, SITE WORK, TOOLS USE, ETC.) AND OSHA 10 HOUR CERTIFICATION, TO PREPARE THEM FOR A CAREER IN THE HIGHWAY CONSTRUCTION TRADES. GRADUATES ARE WELL-TRAINED AND READY TO BECOME PRODUCTIVE ENTRY-LEVEL CONSTRUCTION WORKERS. CONTACT THE DISTRICT 8 EEO OFFICE AT 618-346-3360 AND/OR THE HCCTP COORDINATOR AT 618-874-6528 TO LEARN MORE ABOUT THE PROGRAM AND FOR ASSISTANCE IN MEETING WORKFORCE AND TRAINEE GOALS.
- ⑤ EIGHT ADDITIONAL CHANGEABLE MESSAGE SIGNS SHALL BE REQUIRED FOR THIS PROJECT AS SHOWN IN THE CHANGEABLE MESSAGE SIGN DETAIL. FOUR CHANGEABLE MESSAGE SIGNS SHALL BE PLACED 2 WEEKS PRIOR TO ANY LANE CLOSURES. TWO CHANGEABLE MESSAGE SIGNS SHALL BE PLACED 2 WEEKS PRIOR TO THE FIRST INTERSTATE WEEKEND CLOSURE AND TWO CHANGEABLE MESSAGE SIGNS SHALL BE PLACED 2 WEEKS PRIOR TO THE SECOND INTERSTATE WEEKEND CLOSURE. SEE THE CHANGEABLE MESSAGE SIGN DETAIL IN THE PLANS FOR THE APPROXIMATE LOCATIONS. EXACT LOCATIONS SHALL BE AT THE DIRECTION OF THE ENGINEER.

## MIXTURE REQUIREMENTS

THE FOLLOWING MIXTURE REQUIREMENTS ARE APPLICABLE FOR THIS PROJECT:

MIXTURE USE	POLY DECK SURFACE
AC/PG	SBS PG 76-22
RAP % (MAX)	SEE SPECIAL PROVISION
DESIGN AIR Voids	4.0% @ Ndes=90
MIX COMPOSITION (Gradation)	IL 9.5
FRICITION AGG	MIXTURE "E"
QUALITY MGMT PROGRAM	QC/QA

PLAN QUANTITIES FOR HMA ITEMS ARE CALCULATED USING A UNIT WEIGHT OF 112 LB/SQ YD/IN

## COMMITMENTS

NONE

## STRUCTURE OMISSIONS

SN	NB/SB	M.M.	TO	M.M.	LENGTH (FT)
082-0226	NB & SB	15.05	TO	15.08	113
082-0227	NB & SB	15.43	TO	15.66	1228
082-0228	NB & SB	16.22	TO	16.25	154
082-0229	NB & SB	16.38	TO	16.41	156
082-0230	NB & SB	16.53	TO	16.56	171
082-0231	NB & SB	16.71	TO	16.74	203
082-0235	NB & SB	18.62	TO	18.65	164
082-0236	NB & SB	18.94	TO	18.97	171
082-0237	NB	19.12	TO	19.21	491
082-0238	SB				
082-0239	NB	19.54	TO	19.59	268
082-0240	SB	19.50	TO	19.55	271
082-0241	NB	20.07	TO	20.14	357
082-0242	SB				
082-0245	NB	21.92	TO	21.99	* 342
082-0247	SB	22.34	TO	22.72	2011
082-0248	NB				
082-0249	NB	23.56	TO	23.61	268
082-0250	SB				

\* SN 082-0245 SHALL BE OMITTED FOR ROADWAY AND BRIDGE DECK PATCHING. STRUCTURE LENGTH NOT OMITTED FROM GROSS LENGTH.

MODEL: s:\MODEL\MHFS FILE: MHFS\_Plan\p19m19m00m0a.dwg, illinois.gov\PHWDOT\Documents\DOT\_Offices\District\_8\Projects\08276M26\CADD\08a\Cadd\sheet\08276M26-shc-genmate.dgn

USER NAME = estevest	DESIGNED - _____	REVISED - _____
	DRAWN - _____	REVISED - _____
PLOT SCALE = 100,0000' / in.	CHECKED - _____	REVISED - _____
PLOT DATE = 3/20/2019	DATE - _____	REVISED - _____

**STATE OF ILLINOIS  
DEPARTMENT OF TRANSPORTATION**

**INDEX OF SHEETS, HIGHWAY STANDARDS, GENERAL NOTES,  
COMMITMENTS, AND STRUCTURE OMISSIONS**

SCALE: \_\_\_\_\_ SHEET 1 OF 1 SHEETS STA. \_\_\_\_\_ TO STA. \_\_\_\_\_

F.A.I. RTE.	SECTION	COUNTY	TOTAL SHEETS	SHEET NO.
255	DIST 8 PATCHING 2019-1	VARIOUS	21	2
			CONTRACT NO. 76M26	
ILLINOIS				

CODE NO.	ITEM	UNIT	100% STATE TOTAL QUANTITY	CONSTRUCTION CODE		
				MADISON ROADWAY	ST. CLAIR ROADWAY	ST. CLAIR BRIDGE
				0006	0006	0013
				URBAN	URBAN	082-0246 URBAN
40600295	POLYMERIZED BITUMINOUS MATERIALS (TACK COAT)	POUND	1388	0	436	952
40600982	HOT-MIX ASPHALT SURFACE REMOVAL - BUTT JOINT	SQ YD	76	0	44	32
40603570	POLYMERIZED HOT-MIX ASPHALT SURFACE COURSE, MIX "E", N90	TON	346	0	109	237
44200549	CLASS A PATCHES, TYPE I, 10 INCH	SQ YD	482	21	461	0
44200553	CLASS A PATCHES, TYPE II, 10 INCH	SQ YD	1294	57	1237	0
44200557	CLASS A PATCHES, TYPE III, 10 INCH	SQ YD	500	21	479	0
44200559	CLASS A PATCHES, TYPE IV, 10 INCH	SQ YD	416	17	399	0
44213000	PATCHING REINFORCEMENT	SQ YD	2692	116	2576	0
44213200	SAW CUTS	FOOT	19364	840	18524	0
44213204	TIE BARS 3/4"	EACH	160	7	153	0
50157300	PROTECTIVE SHIELD	SQ YD	871	0	0	871
67100100	MOBILIZATION	L SUM	1	0.2	0.6	0.2
70100420	TRAFFIC CONTROL AND PROTECTION, STANDARD 701411	EACH	27	1	26	0
70100800	TRAFFIC CONTROL AND PROTECTION, STANDARD 701401	L SUM	1	0.2	0.6	0.2

MODEL: s:\MODEL\MHMS  
 FILE: MHMS\_Plan\p10m10m.mxd  
 PROJECT: I:\Projects\DOT\Documents\DOT\_Offices\I\Irtct\B\Projects\DOT\76M26\CADD\Drawn\CAD\Sheets\DOT\76M26-shc-500.dgn

USER NAME = estevesst	DESIGNED - _____	REVISED - _____
	DRAWN - _____	REVISED - _____
PLOT SCALE = 100.0000' / in.	CHECKED - _____	REVISED - _____
PLOT DATE = 3/20/2019	DATE - _____	REVISED - _____

**STATE OF ILLINOIS  
DEPARTMENT OF TRANSPORTATION**

**SUMMARY OF QUANTITIES**

SCALE: \_\_\_\_\_ SHEET 1 OF 2 SHEETS STA. \_\_\_\_\_ TO STA. \_\_\_\_\_

F.A.I. RTE.	SECTION	COUNTY	TOTAL SHEETS	SHEET NO.
255	DIST 8 PATCHING 2019-1	VARIOUS	21	3
			CONTRACT NO. 76M26	
ILLINOIS				





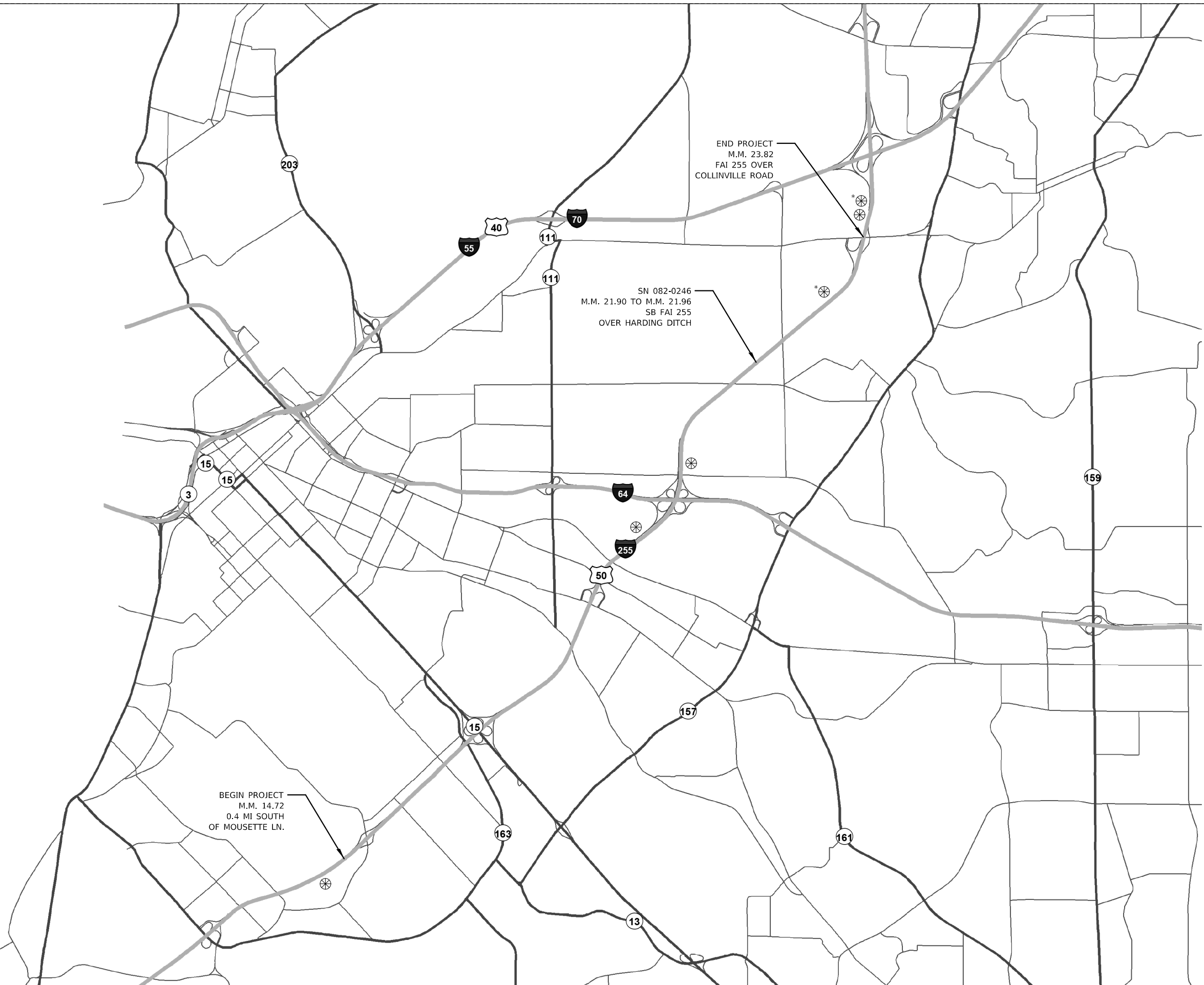






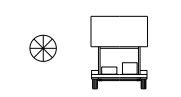


MODEL: \\MODELNAME  
 FILE: \\NAME: \\PROJECTS\DOT\Documents\DOT\_Offices\District\_8\Projects\ID276M26\CADDData\CADDsheets\ID276M26-shc-setalle.dgn



NOT TO SCALE

SIGNS REQUIRED  
TO BE FURNISHED BY CONTRACTOR



CHANGEABLE  
MESSAGE SIGN

\* CHANGEABLE MESSAGE SIGN SHALL BE PLACED  
2 WEEKS PRIOR TO THE INTERSTATE WEEKEND CLOSURES.

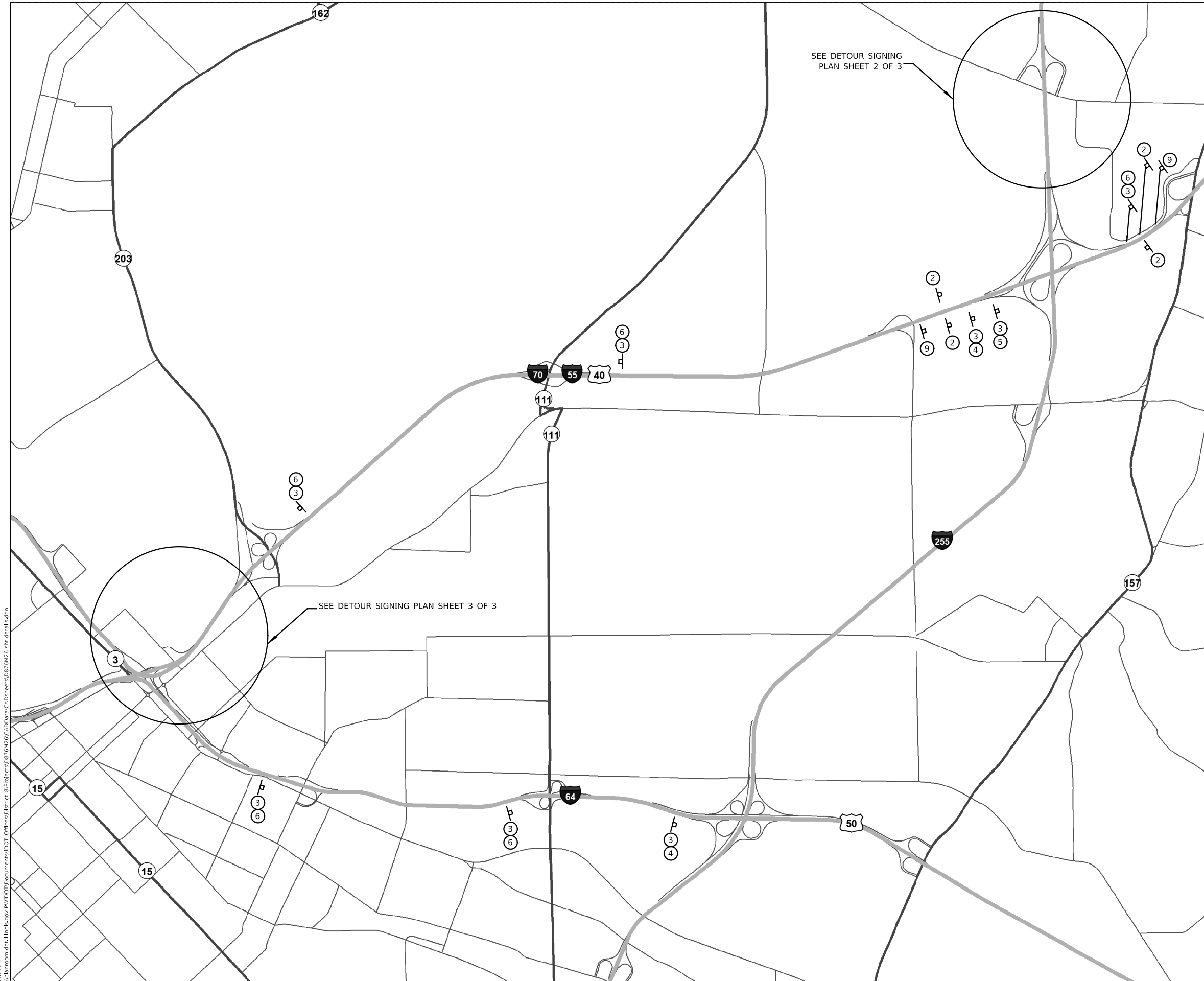
USER NAME = estevest	DESIGNED - _____	REVISED - _____
	DRAWN - _____	REVISED - _____
PLOT SCALE = 100,0000' / in.	CHECKED - _____	REVISED - _____
PLOT DATE = 3/20/2019	DATE - _____	REVISED - _____

**STATE OF ILLINOIS  
DEPARTMENT OF TRANSPORTATION**

**CHANGEABLE MESSAGE SIGN DETAIL**

SCALE: \_\_\_\_\_ SHEET 1 OF 1 SHEETS STA. \_\_\_\_\_ TO STA. \_\_\_\_\_

F.A.I. RTE.	SECTION	COUNTY	TOTAL SHEETS	SHEET NO.
255	DIST 8 PATCHING 2019-1	VARIOUS	21	9
			CONTRACT NO. 76M26	
ILLINOIS				



NOT TO SCALE

SIGNS REQUIRED TO BE FURNISHED BY CONTRACTOR

- ① ⑥
- ② ⑦
- ③ ⑧
- ④ ⑨
- ⑤

NOTE:  
SEE DETOUR SIGNING SPECIAL PROVISIONS  
FOR ADDITIONAL INFORMATION.

MODEL: \\MODELNAME  
 FILE: \\NAME.Plot  
 PROJECT: \\PROJECTNAME  
 OFFICE: \\OFFICE  
 DATE: 3/18/2019

USER NAME = estevesst	DESIGNED - _____	REVISED - _____
PLOT SCALE = 100,0000' / in.	DRAWN - _____	REVISED - _____
PLOT DATE = 3/18/2019	CHECKED - _____	REVISED - _____
	DATE - _____	REVISED - _____

**STATE OF ILLINOIS  
DEPARTMENT OF TRANSPORTATION**

**DETOUR SIGNING PLAN**

SCALE: \_\_\_\_\_ SHEET 1 OF 3 SHEETS STA. \_\_\_\_\_ TO STA. \_\_\_\_\_

F.A.I. RTE.	SECTION	COUNTY	TOTAL SHEETS	SHEET NO.
255	DIST 8 PATCHING 2019-1	VARIOUS	21	10
			CONTRACT NO. 76M26	
ILLINOIS				



NOT TO SCALE

SIGNS REQUIRED  
TO BE FURNISHED BY CONTRACTOR

- |   |  |   |                         |
|---|--|---|-------------------------|
| ① |  | ⑥ |                         |
| ② |  | ⑦ |                         |
| ③ |  | ⑧ |                         |
| ④ |  | ⑨ |                         |
| ⑤ |  |   | CHANGEABLE MESSAGE SIGN |

NOTE:  
SEE DETOUR SIGNING SPECIAL PROVISIONS  
FOR ADDITIONAL INFORMATION.



MODEL: \\MODELS\NAME  
FILE: \\NAME: P:\pub\h\room\m\dat\illinois.gov\PIWDOT\Documents\DOT\_Offices\District\_8\Projects\ID776M26\CADD\Drawn\CA\Drawn\Sheet\ID776M26-shc-det-ill-1.dgn

USER NAME = estevesst	DESIGNED - _____	REVISED - _____
	DRAWN - _____	REVISED - _____
PLOT SCALE = 100,0000' / in.	CHECKED - _____	REVISED - _____
PLOT DATE = 3/18/2019	DATE - _____	REVISED - _____

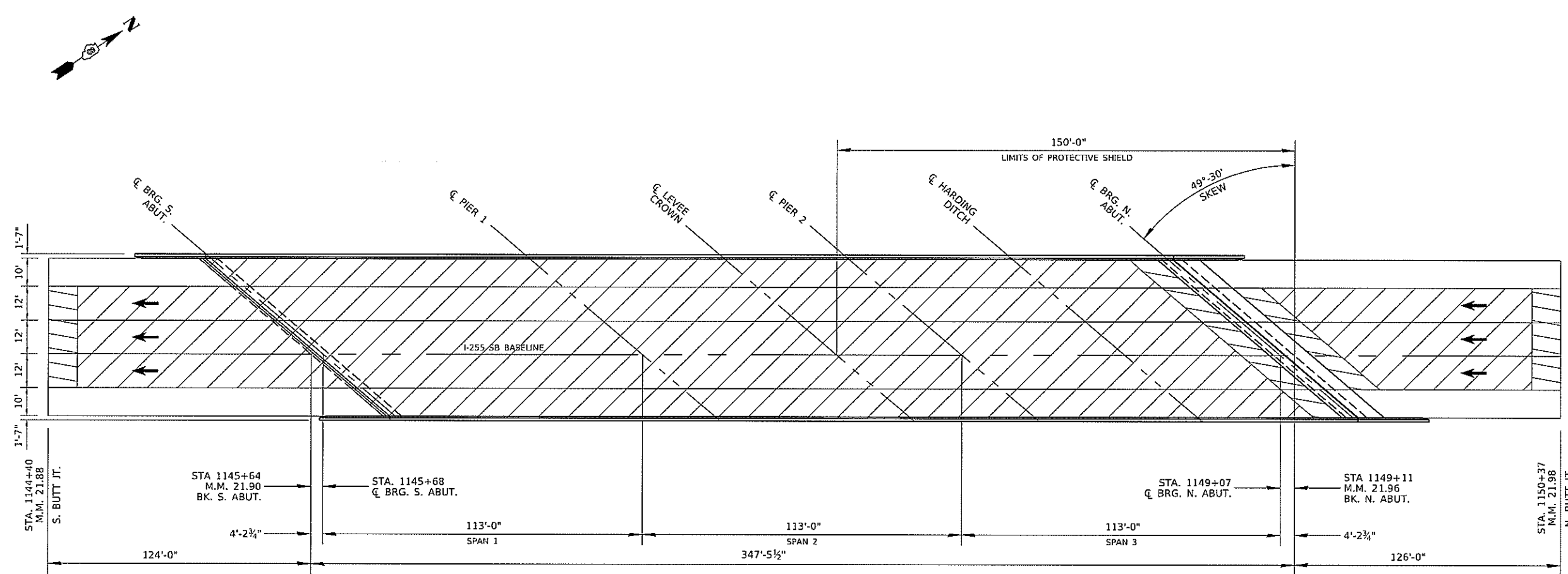
**STATE OF ILLINOIS  
DEPARTMENT OF TRANSPORTATION**

**DETOUR SIGNING PLAN**

SCALE: \_\_\_\_\_ SHEET 2 OF 3 SHEETS STA. \_\_\_\_\_ TO STA. \_\_\_\_\_

F.A.I. RTE.	SECTION	COUNTY	TOTAL SHEETS	SHEET NO.
255	DIST 8 PATCHING 2019-1	VARIOUS	21	11
			CONTRACT NO. 76M26	
ILLINOIS				

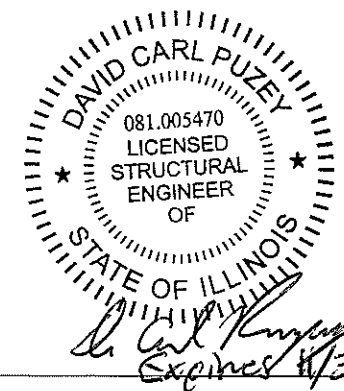




PLAN VIEW  
(NOT TO SCALE)

NOTES:  
SEE SHEET NO. 15 AND 16 FOR BUTT JOINT DETAILS.  
THE PROTECTIVE SHIELD LIMITS EXTEND FROM THE LEVEE CROWN TO THE NORTH ABUTMENT AS SHOWN IN THE PLAN VIEW.  
SEE PROTECTIVE SHIELD SPECIAL PROVISIONS FOR ADDITIONAL INFORMATION.

- HOT-MIX ASPHALT SURFACE REMOVAL, 2" SPECIAL
- HOT-MIX ASPHALT SURFACE REMOVAL - BUTT JOINT 2"



MODEL: \$MODELNAME\$  
 FILE: \$FILE\$  
 PROJECT: \$PROJECT\$  
 USER: \$USER\$  
 DATE: \$DATE\$  
 TIME: \$TIME\$  
 PLOT: \$PLOT\$  
 PLOT DATE: \$PLOT DATE\$  
 PLOT SCALE: \$PLOT SCALE\$  
 PLOT DATE: \$PLOT DATE\$

USER NAME = estevesst	DESIGNED - TBP	REVISED -
DRAWN -	REVISIONS -	
PLOT SCALE = 100.0000' / in.	CHECKED - PDF	REVISED -
PLOT DATE = 3/20/2019	DATE -	REVISED -

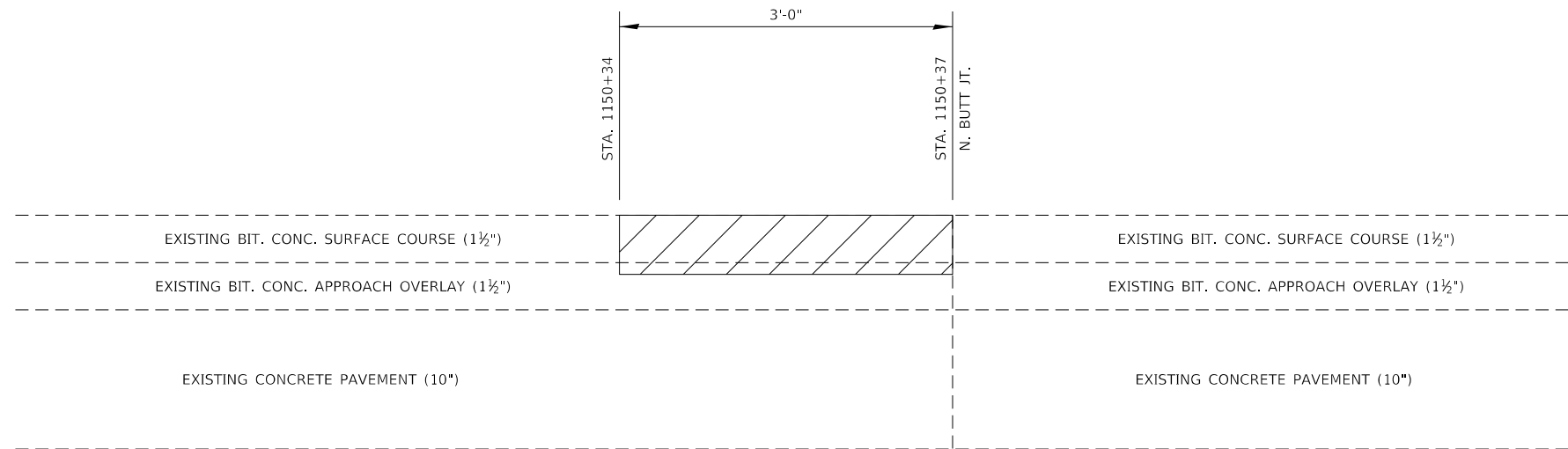
STATE OF ILLINOIS  
DEPARTMENT OF TRANSPORTATION

SN 082-0246  
STRUCTURE PLAN VIEW  
SCALE: \_\_\_\_\_ SHEET 1 OF 1 SHEETS STA. \_\_\_\_\_ TO STA. \_\_\_\_\_

F.A.I. RTE.	SECTION	COUNTY	TOTAL SHEETS	SHEET NO.
255	DIST 8 PATCHING 2019-1	VARIOUS	21	13
ILLINOIS			CONTRACT NO. 76M26	







NORTH APPROACH BUTT JOINT REMOVAL DETAIL  
(NOT TO SCALE)



HOT-MIX ASPHALTS SURFACE REMOVAL - BUTT JOINT, 2"

MODEL: s:\MODEL\MHFE  
FILE: MHFE.dwg  
PROJECT: I:\Projects\DOT\Documents\DOT\_Offices\District 8\Projects\DOT\76M26\CADD\Drawings\DOT\76M26-shc-sheet16.dgn

USER NAME = estevesst	DESIGNED - _____	REVISED - _____
	DRAWN - _____	REVISED - _____
PLOT SCALE = 100.0000' / in.	CHECKED - _____	REVISED - _____
PLOT DATE = 3/20/2019	DATE - _____	REVISED - _____

STATE OF ILLINOIS  
DEPARTMENT OF TRANSPORTATION

BUTT JOINT DETAILS

SCALE: \_\_\_\_\_ SHEET 2 OF 2 SHEETS STA. \_\_\_\_\_ TO STA. \_\_\_\_\_

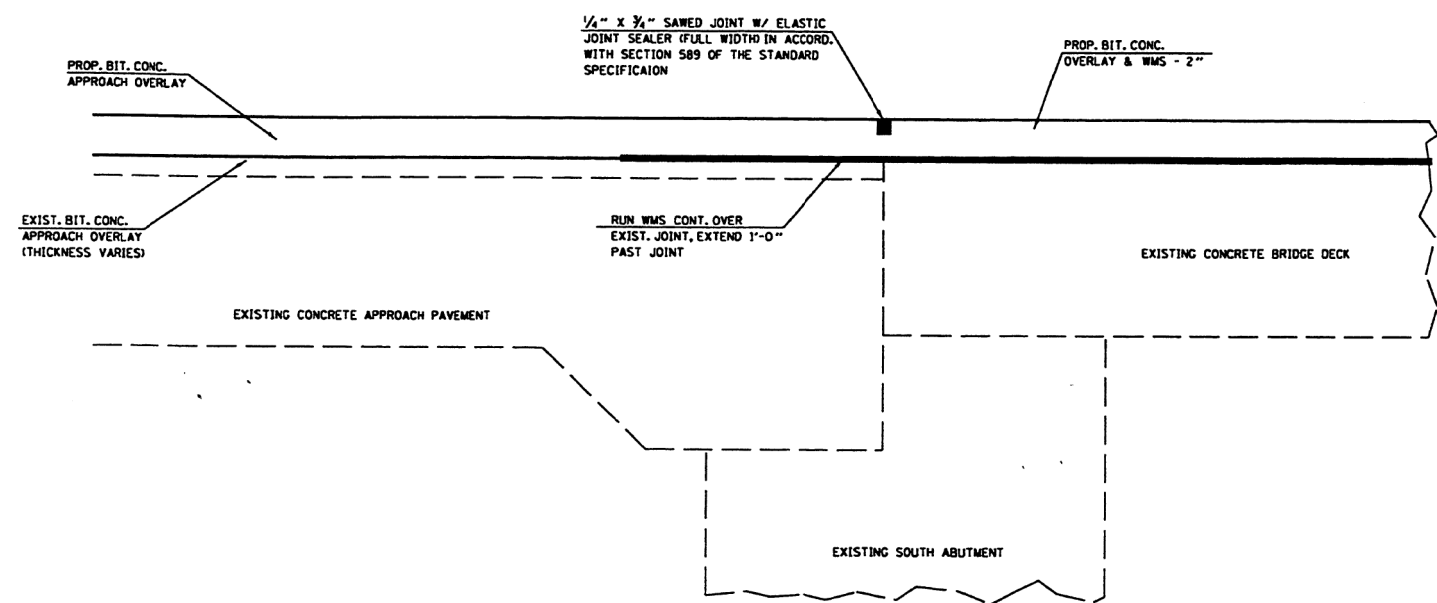
F.A.I. RTE.	SECTION	COUNTY	TOTAL SHEETS	SHEET NO.
255	DIST 8 PATCHING 2019-1	VARIOUS	21	16
ILLINOIS			CONTRACT NO. 76M26	



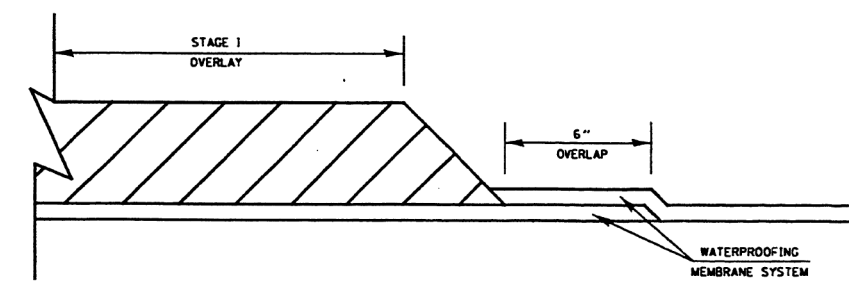


NO.	SECTION	COUNTY	TOTAL SHEETS	SHEET NO.
255	82-181-3	ST. CLAIR	20	10
STA. _____		TO STA. _____		

EXISTING CONDITIONS:

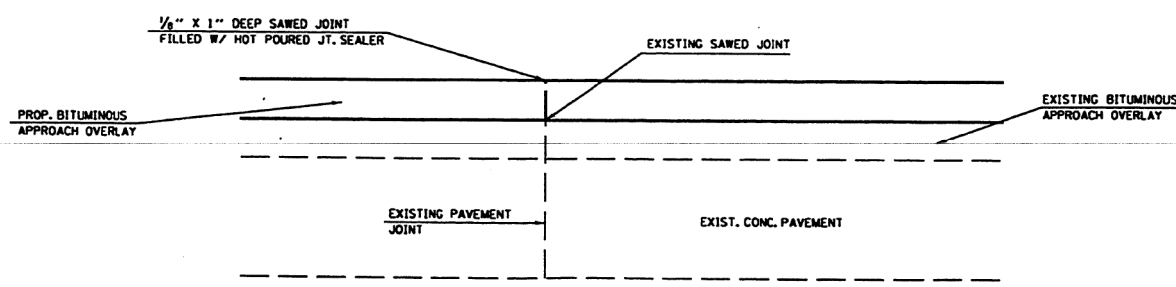


**SECTION THRU SOUTH ABUTMENT  
STA. 1145+63.70**

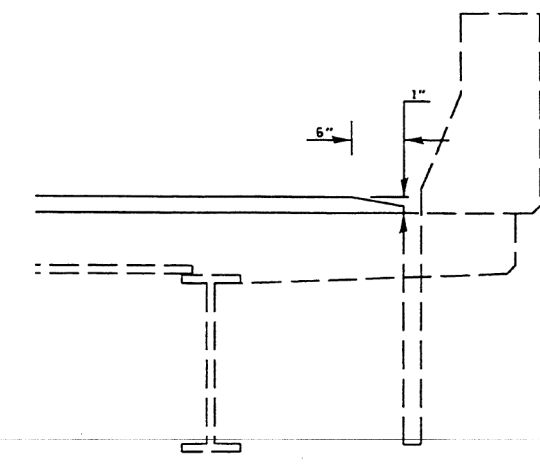


**WATERPROOFING LAP DETAIL**

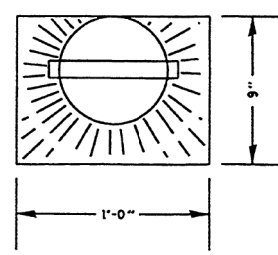
**FOR INFORMATION ONLY**



**PAVEMENT JOINT < 1/2\"/> STA. 1150+20±**



**SECTION AT EXISTING DECK DRAIN**



**PLAN VIEW AT DECK DRAIN**

NOTE: THE COST OF ALL SAWCUTS AND JOINT SEALERS SHALL BE INCLUDED IN THE COST OF BIT. CONC. SURFACE COURSE, SUPERPAVE, MIX E N90

REVISIONS	DATE

**ILLINOIS DEPARTMENT OF TRANSPORTATION**

**MISCELLANEOUS DETAILS**

**FAI ROUTE 255SB  
SECTION 82-181-3  
ST. CLAIR COUNTY**

DRAWN BY: \_\_\_\_\_

PLOT DATE: Monday May 13, 2002 @ 03:06:22 PM

PLAN	NO. _____
DATE	_____
BY	_____
PROJECT	_____
NO. _____	_____
DATE	_____
BY	_____
PROJECT	_____
NO. _____	_____
DATE	_____
BY	_____

USER NAME = estevesst	DESIGNED - _____	REVISED - _____
PLOT SCALE = 100,000' / in.	DRAWN - _____	REVISED - _____
PLOT DATE = 3/18/2019	CHECKED - _____	REVISED - _____
	DATE - _____	REVISED - _____

**STATE OF ILLINOIS  
DEPARTMENT OF TRANSPORTATION**

<b>SN 082-0246 STRUCTURE DETAILS</b>		F.A.I. RTE. 255	SECTION DIST 8 PATCHING 2019-1	COUNTY VARIOUS	TOTAL SHEETS 21	SHEET NO. 18
SCALE: _____	SHEET 2	OF 5 SHEETS	STA. _____	TO STA. _____	ILLINOIS	

F.A.I. RTE. 255	SECTION DIST 8 PATCHING 2019-1	COUNTY VARIOUS	TOTAL SHEETS 21	SHEET NO. 18
CONTRACT NO. 76M26				

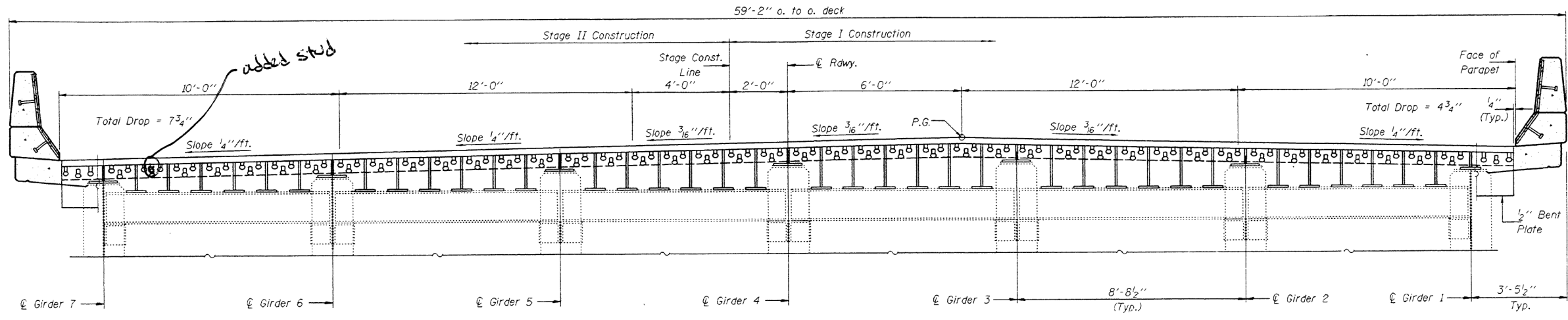
MODEL: s:\MODEL\MAR15... FILE NAME: p:\pub\mtdm\com\da\illinois.gov\p\w\DOT\Documents\DOT\_Offices\District 8\Projects\082-181-3\CADD\82-181-3-02-10-10.dgn



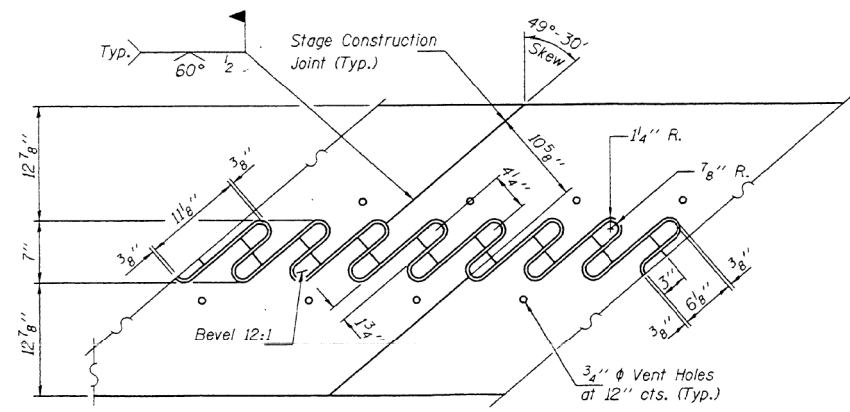


STATE OF ILLINOIS  
DEPARTMENT OF TRANSPORTATION

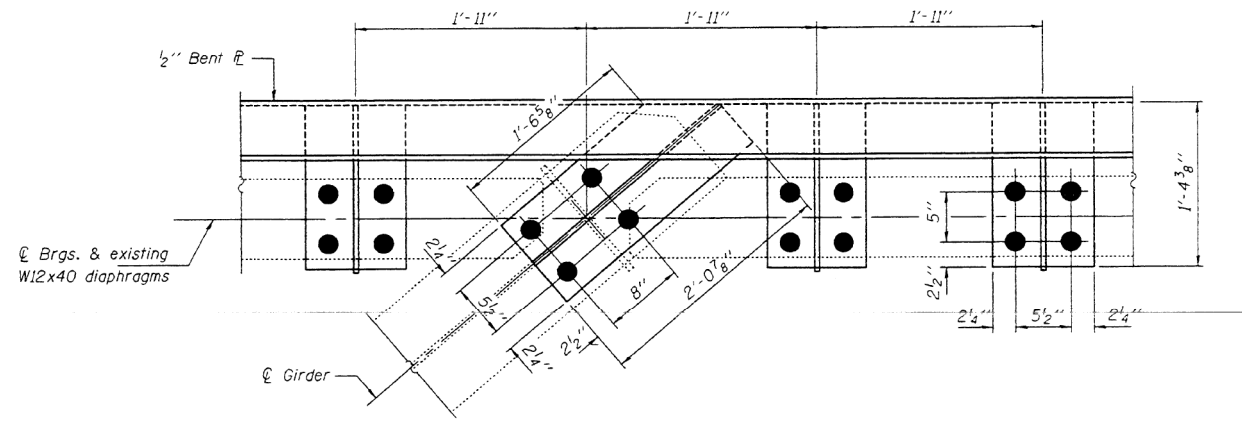
SECTION	COUNTY	TOTAL SHEETS	SHEET NO.	SHEET NO. 5
255 *	ST. CLAIR	20	15	10 SHEETS
* 82-1B1-3				



SECTION F-F



FLAME CUTTING DIAGRAM  
Cut From  
2 3/8" x 2'-8 3/4" x 89'-4 1/4" (M-270 Gr. 50)



PARTIAL PLAN  
SPAN SIDE  
(Showing Stool Layout)

FOR INFORMATION ONLY

DESIGNED	JFS	June 24, 2002
CHECKED	ATH	EXAMINED <i>John A. Moris</i> ENGINEER OF STRUCTURAL SERVICES
DRAWN	Dierbert	PASSED
CHECKED	JFS ATH	ENGINEER OF BRIDGES AND STRUCTURES

JOINT DETAILS  
AT NORTH ABUTMENT  
F.A.I. RT. 255  
ST. CLAIR COUNTY  
S.N. 082-0246 (S.B.)

MODEL: S:\MODEL\MJFS... FILE: MJFS\_Plan\Illinois\gov\PIWDOT\Documents\DOT\_Offices\District 8\Projects\082-0246\082-0246-01-01.dgn

USER NAME = estevest	DESIGNED - _____	REVISED - _____
PLOT SCALE = 100.0000' / in.	DRAWN - _____	REVISED - _____
PLOT DATE = 3/18/2019	CHECKED - _____	REVISED - _____
	DATE - _____	REVISED - _____

STATE OF ILLINOIS  
DEPARTMENT OF TRANSPORTATION

SN 082-0246 STRUCTURE DETAILS	
SCALE: _____	SHEET 5 OF 5 SHEETS
STA. _____	TO STA. _____

F.A.I. RTE.	SECTION	COUNTY	TOTAL SHEETS	SHEET NO.
255	DIST 8 PATCHING 2019-1	VARIOUS	21	21
ILLINOIS			CONTRACT NO. 76M26	