

STATE OF ILLINOIS  
DEPARTMENT OF TRANSPORTATION

F.A.P. RTE.	SECTION	COUNTY	TOTAL SHEETS	SHEET NO.
68	D3 US 34/IL 23 PP 2020-3	LASALLE	6	1
		ILLINOIS	CONTRACT NO 68K01	

**INDEX OF SHEETS**

1. COVER SHEET
2. GENERAL NOTES
3. SUMMARY OF QUANTITIES
4. TYPICAL SECTIONS
5. SCHEDULES
- 6-7. CLASS B PATCHING DETAILS
8. DETAILS

**STANDARDS**

- |           |  |
|-----------|--|
| 701001-02 | OFF-ROAD OPERATIONS 2L, 2W, MORE THAN 15' (4.5 m) AWAY                     |
| 701006-05 | OFF-ROAD OPERATIONS 2L, 2W, 15' (4.5 m) TO 24" (600 mm) FROM PAVEMENT EDGE |
| 701336-07 | LANE CLOSURE, 2L, 2W, WORK AREAS IN SERIES, FOR SPEEDS ≥ 45 MPH            |
| 701502-09 | URBAN LANE CLOSURE, 2L, 2W, WITH BIDIRECTIONAL LEFT TURN LANE              |
| 701901-08 | TRAFFIC CONTROL DEVICES  |

# PROPOSED HIGHWAY PLANS

FAP ROUTE 68 (US 34/IL 23)  
SECTION D3 US 34/IL 23 PP 2020-3  
PROJECT  
PAVEMENT PATCHING  
LASALLE COUNTY

C-93-085-19

**END IMPROVEMENT**

INTERSECTION OF US 34/23  
AND US 34/IL 23  
N. INTERSECTION  
LOG MILE 0.00

**BEGIN IMPROVEMENT**  
INTERSECTION OF US 34/IL 23  
AND US 34/23 S. INTERSECTION  
LOG MILE 4.10



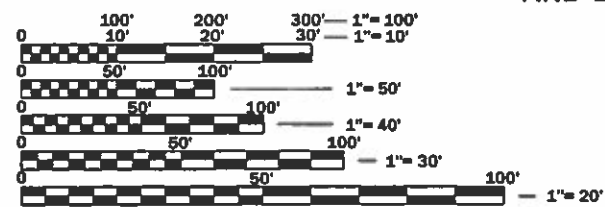
**FUNCTIONAL CLASSIFICATION**  
RURAL  
MAJOR COLLECTOR  
F.A.P. ROUTE 68 (US 34/IL 23)  
2017 ADT = 3950  
P.V. 90.13% S.U. 2.28% M.U. 7.59%

STATE OF ILLINOIS  
DEPARTMENT OF TRANSPORTATION

SUBMITTED 3-28 2019  
K. Marchel  
REGIONAL ENGINEER

May 10 2019  
Co. E.A. ETC  
ENGINEER OF DESIGN AND ENVIRONMENT

May 19 2019  
Paul P. Chif  
DIRECTOR OF HIGHWAYS PROJECT IMPLEMENTATION



FULL SIZE PLANS HAVE BEEN PREPARED USING STANDARD ENGINEERING SCALES. REDUCED SIZED PLANS WILL NOT CONFORM TO STANDARD SCALES. IN MAKING MEASUREMENTS ON REDUCED PLANS, THE ABOVE SCALES MAY BE USED.

J.U.L.I.E.  
JOINT UTILITY LOCATION INFORMATION FOR EXCAVATION  
1-800-892-0123  
OR 811

PROJECT ENGINEER JOE KANNEL P.E.  
UNIT CHIEF RON WOODSHANK  
DISTRICT 3 NO. (815) 434-6131  
CONTRACT NO. 66K01

GROSS LENGTH = 31680 FT. = 6 MILE  
NET LENGTH = 31680 FT. = 6 MILE

PRINTED BY THE AUTHORITY  
OF THE STATE OF ILLINOIS

**GENERAL NOTES**

FOR STABILIZATION, ALL TYPE III BARRICADES WILL REQUIRE A MINIMUM OF FOUR SAND BAGS PER BARRICADE.

ALL EXCAVATED MATERIAL, WHICH INCLUDES DIGGING OR GRADING OF ANY SOIL OR FILL MATERIAL, WITH THE EXCEPTION OF AGGREGATE FILLS, MUST BE INCORPORATED WITHIN THE IDOT RIGHT OF WAY DUE TO ENVIRONMENTAL DOCUMENTATION REQUIREMENTS.

ANY REFERENCE TO A STANDARD IN THESE PLANS SHALL BE INTERPRETED TO MEAN THE EDITION AS INDICATED BY THE SUBNUMBER SHOWN IN THE LIST OF STANDARDS OR THE COPY INCLUDED IN THESE PLANS.

THE CONTRACTOR SHALL CONTACT JULIE AT LEAST 48 HOURS PRIOR TO EXCAVATION TO DETERMINE WHICH UTILITIES ARE IN THE AREA.

**COMMITMENTS**

STATE OF ILLINOIS  
DEPARTMENT OF TRANSPORTATION  
DISTRICT THREE  
AS BUILT INFORMATION

\_\_\_\_\_  
SUPERVISING CONSTRUCTION FIELD ENGINEER

\_\_\_\_\_  
RESIDENT ENGINEER / TECHNICIAN

START & END DATES  
OF CONSTRUCTION:

INSPECTORS:

STATE OF ILLINOIS  
DEPARTMENT OF TRANSPORTATION  
DISTRICT THREE

PREPARED BY: *D. Benoit*  
DISTRICT STUDIES & PLANS ENGINEER

DATE: 3-25-19

EXAMINED BY: *[Signature]*  
DISTRICT CONSTRUCTION ENGINEER

*[Signature]*  
DISTRICT MATERIALS ENGINEER

*[Signature]*  
DISTRICT OPERATIONS ENGINEER

FILE NAME =	USER NAME = MARINIEJ	DESIGNED - EVAN MARINI	REVISED -
pw:\iplanroom.dot\illinois.gov\PWDOT\Documents\IDOT	Files\District 3\Projects\ID366K01\CADData\66K01-cover.dgn	DRAWN - EVAN MARINI	REVISED -
Default	PLOT SCALE = 3.9422' / mm	CHECKED - RON WOODSHANK	REVISED -
	PLOT DATE = 3/20/2019	DATE - 1/22/2019	REVISED -

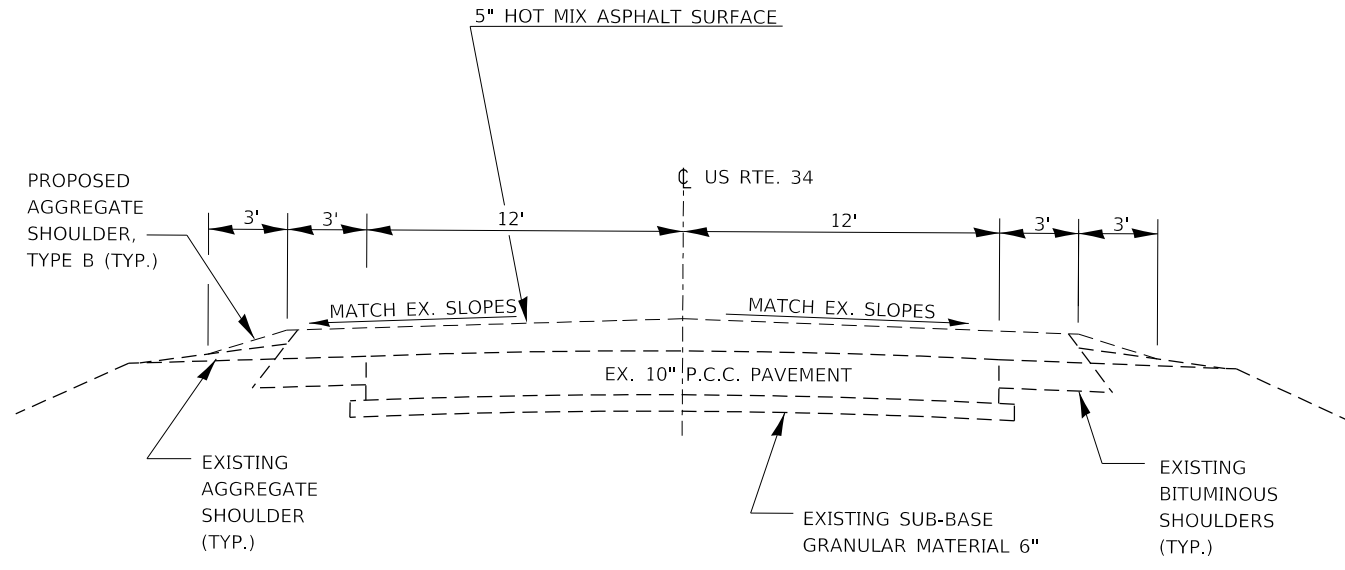
STATE OF ILLINOIS  
DEPARTMENT OF TRANSPORTATION

GENERAL NOTES

SCALE: SHEET 1 OF 1 SHEETS STA. TO STA.

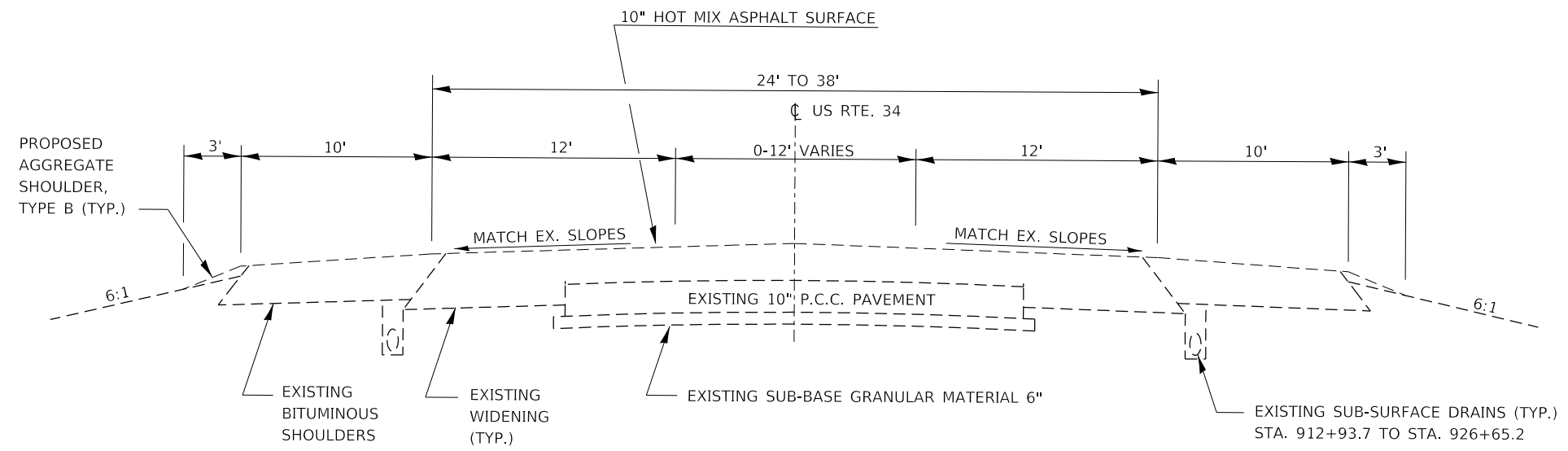
F.A.P. RTE.	SECTION	COUNTY	TOTAL SHEETS	SHEET NO.
68	D3 US 34/IL 23 PP 2020-3	LASALLE	8	2
CONTRACT NO. 66K01				
ILLINOIS FED. AID PROJECT				

CODE NO.	ITEM	UNIT	TOTAL QUANTITY	CONSTR. CODE	
				CONTRACT MAINTENANCE	
				100% STATE ROADWAY	
				0006	RURAL
42000060	WELDED WIRE REINFORCEMENT	SQ YD	84	84	
44201031	CLASS B PATCHES, TYPE II, 15 INCH	SQ YD	815	815	
44201035	CLASS B PATCHES, TYPE III, 15 INCH	SQ YD	48	48	
44201102	CLASS B PATCHES, TYPE II, 20 INCH	SQ YD	56	56	
44201299	DOWEL BARS 1 1/2"	EACH	3040	3040	
44213200	SAW CUTS	FOOT	7566	7566	
67100100	MOBILIZATION	L SUM	1	1	
X7010216	TRAFFIC CONTROL AND PROTECTION, (SPECIAL)	L SUM	1	1	
Z0017099	DOWEL BAR ASSEMBLY	EACH	1	1	
Z0030850	TEMPORARY INFORMATION SIGNING	SQ FT	42	42	



**TYPICAL SECTION 1**

LM. 0.00 TO LM. 4.00



**TYPICAL SECTION 2**

LM. 4.00 TO LM. 4.10

FILE NAME =	USER NAME = MARINEJ	DESIGNED - EVAN MARINI	REVISED -	<b>STATE OF ILLINOIS DEPARTMENT OF TRANSPORTATION</b>	<b>TYPICAL SECTION</b>			F.A.P. RTE.	SECTION	COUNTY	TOTAL SHEETS	SHEET NO.
pw2\planroom\dotillinois.gov\PWDOT\Documents\IDOT	offices\District 3\Projects\D366K01\CADData\66K01-cover.dgn	DRAWN - EVAN MARINI	REVISED -					68	D3 US 34/IL 23 PP 2020-3	LASALLE	8	4
Default	PLOT SCALE = 3/4" = 1' / mm	CHECKED - RON WOODSHANK	REVISED -		CONTRACT NO. 66K01							
	PLOT DATE = 3/20/2019	DATE - 1/22/2019	REVISED -		SCALE:	SHEET 1	OF 1	SHEETS	STA.	TO STA.	ILLINOIS   FED. AID PROJECT	

PATCHING SCHEDULE

SOUTHBOUND LANE						
LOCATION	PATCH LENGTH	CLASS B		DOWEL BARS 1 1/2"	SAW CUTS	WELDED WIRE REINF.
		TYPE II 15"	TYPE III 15"			
LOG MILE	(FT)	SQ YD	SQ YD	EACH	FOOT	SQ YD
0.00	6	8		20	48	
0.00	6	8		20	48	
0.20	10	13		20	56	
0.20	6	8		20	48	
0.30	10	13		20	56	
0.40	12		16	20	60	
0.60	6	8		20	48	
0.70	6	8		20	48	
0.70	8	11		20	52	
0.70	10	13		20	56	
0.80	6	8		20	48	
0.80	10	13		20	56	
0.90	6	8		20	48	
1.20	6	8		20	48	
1.30	6	8		20	48	
1.30	10	13		20	56	
1.40	6	8		20	48	
1.40	6	8		20	48	
1.40	10	13		20	56	
1.50	6	8		20	48	
1.60	8	11		20	52	
1.60	6	8		20	48	
1.60	8	11		20	52	
1.60	6	8		20	48	
1.70	6	8		20	48	
1.70	10	13		20	56	
1.90	8	11		20	52	
1.90	6	8		20	48	
2.00	6	8		20	48	
2.00	8	11		20	52	
2.00	6	8		20	48	
2.10	6	8		20	48	
2.10	8	11		20	52	
2.20	8	11		20	52	
2.30	8	11		20	52	
2.50	10	13		20	56	
2.50	6	8		20	48	
2.60	6	8		20	48	
2.70	8	11		20	52	
2.80	6	8		20	48	
3.00	8	11		20	52	
3.10	6	8		20	48	
3.10	6	8		20	48	
3.10	8	11		20	52	
3.30	10	13		20	56	
3.30	8	11		20	52	
3.60	6	8		20	48	
3.80	6	8		20	48	
3.80	6	8		20	48	
3.80	6	8		20	48	
TOTALS		481	16	1020	2580	

PATCHING SCHEDULE

SOUTHBOUND LANE					
LOCATION	PATCH LENGTH	CLASS B	DOWEL BARS 1 1/2"	SAW CUTS	WELDED WIRE REINF.
		TYPE II 20"			
LOG MILE	(FT)	SQ YD	EACH	FOOT	SQ YD
4.00	6	8	20	48	
4.00	6	8	20	48	
4.00	6	8	20	48	
4.00	6	8	20	48	
4.10	6	8	20	48	
TOTALS		32	100	240	

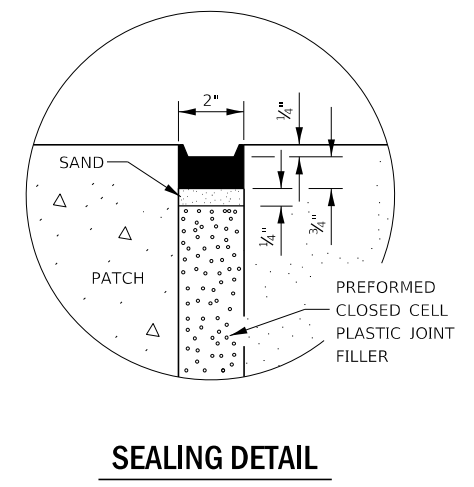
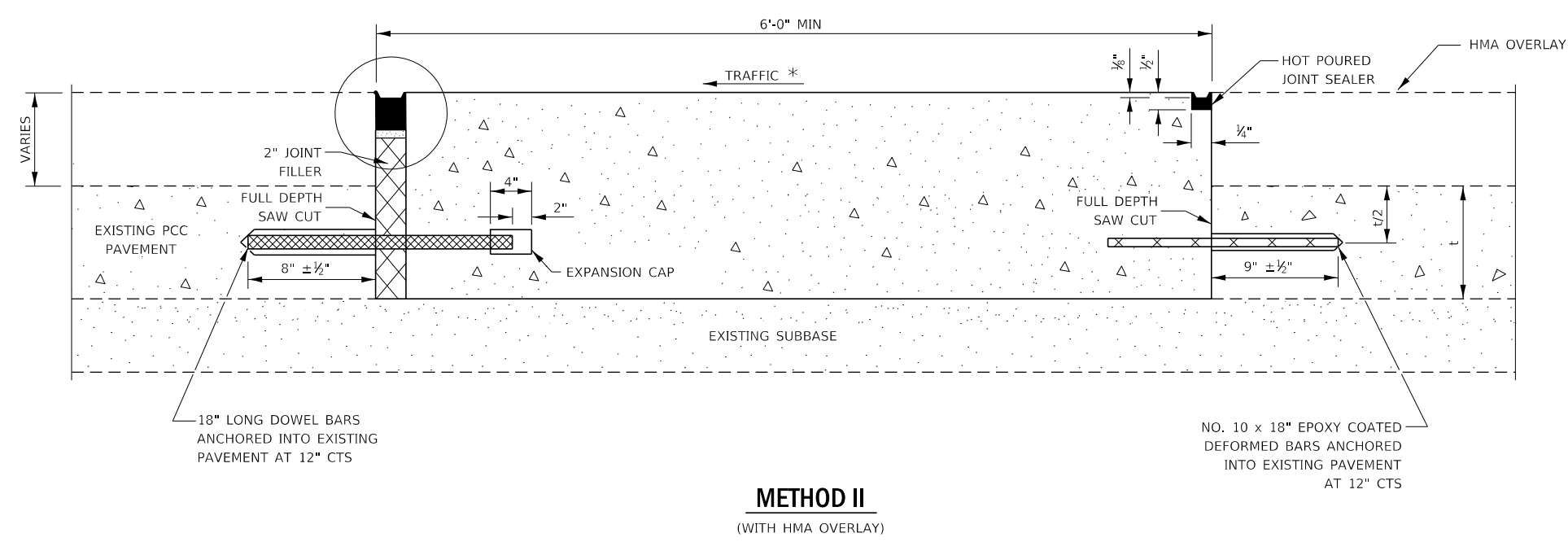
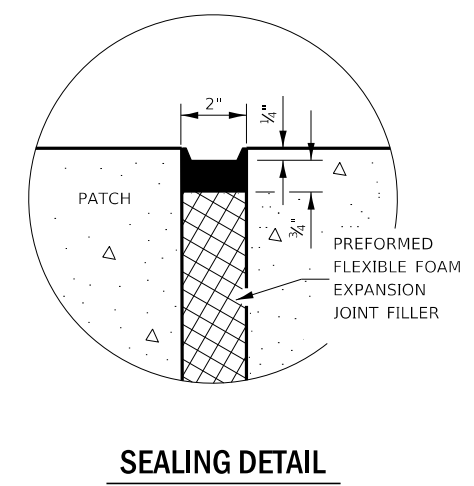
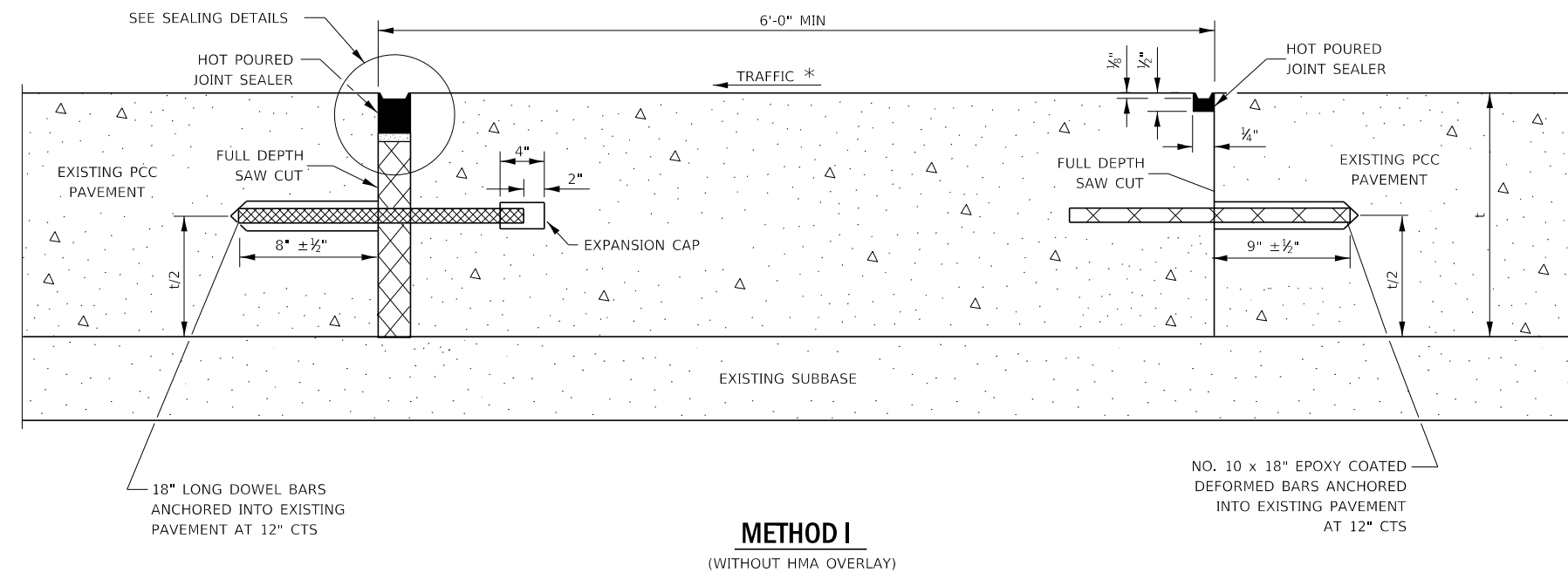
PATCHING SCHEDULE

NORTHBOUND LANE						
LOCATION	PATCH LENGTH	CLASS B		DOWEL BARS 1 1/2"	SAW CUTS	WELDED WIRE REINF.
		TYPE II 15"	TYPE III 15"			
LOG MILE	(FT)	SQ YD	SQ YD	EACH	FOOT	SQ YD
3.80	6	8		20	48	
3.60	6	8		20	48	
3.40	6	8		20	48	
3.30	6	8		20	48	
3.20	8	11		20	52	
3.10	8	11		20	52	
2.80	8	11		20	52	
2.80	8	11		20	52	
2.60	10	13		20	56	
2.50	6	8		20	48	
2.50	12		16	20	60	
2.40	8	11		20	52	
2.30	6	8		20	48	
2.20	6	8		20	48	
2.10	6	8		20	48	
2.00	6	8		20	48	
1.90	6	8		20	48	
1.90	6	8		20	48	
1.80	8	11		20	52	
1.70	6	8		20	48	
1.70	6	8		20	48	
1.60	6	8		20	48	
1.60	6	8		20	48	
1.40	8	11		20	52	
1.40	6	8		20	48	
1.30	6	8		20	48	
1.30	6	8		20	48	
0.90	6	8		20	48	
0.90	8	11		20	52	
0.80	6	8		20	48	
0.80	8	11		20	52	
0.70	6	8		20	48	
0.60	6	8		20	48	
0.50	6	8		20	48	
0.40	6	8		20	48	
0.40	8	11		20	52	
0.20	8	11		20	52	
0.10	6	8		20	48	
0.10	12		16	20	60	
TOTALS		334	32	780	1948	

PATCHING SCHEDULE

NORTHBOUND LANE					
LOCATION	PATCH LENGTH	CLASS B	DOWEL BARS 1 1/2"	SAW CUTS	WELDED WIRE REINF.
		TYPE II 20"			
LOG MILE	(FT)	SQ YD	EACH	FOOT	SQ YD
4.10	6	8	20	48	
4.10	6	8	20	48	
4.00	6	8	20	48	
TOTALS		24	60	144	





**NOTE**

\* WHEN RE-ESTABLISHING A TRANSVERSE EXPANSION JOINT ON A TWO-WAY ROAD, REVERSE THE ORIENTATION OF THE DOWEL BARS WITH RESPECT TO TRAFFIC FOR ONE OF THE PATCHES SUCH THAT THE JOINT WILL BE CONTINUOUS ACROSS BOTH LANES.

MODEL: E:\default; FILE: I:\work\2019\11\11\DOT\Documents\DOT\_Offices\Dirkt\3\Project\66K01\CADD\66K01-cover.dgn

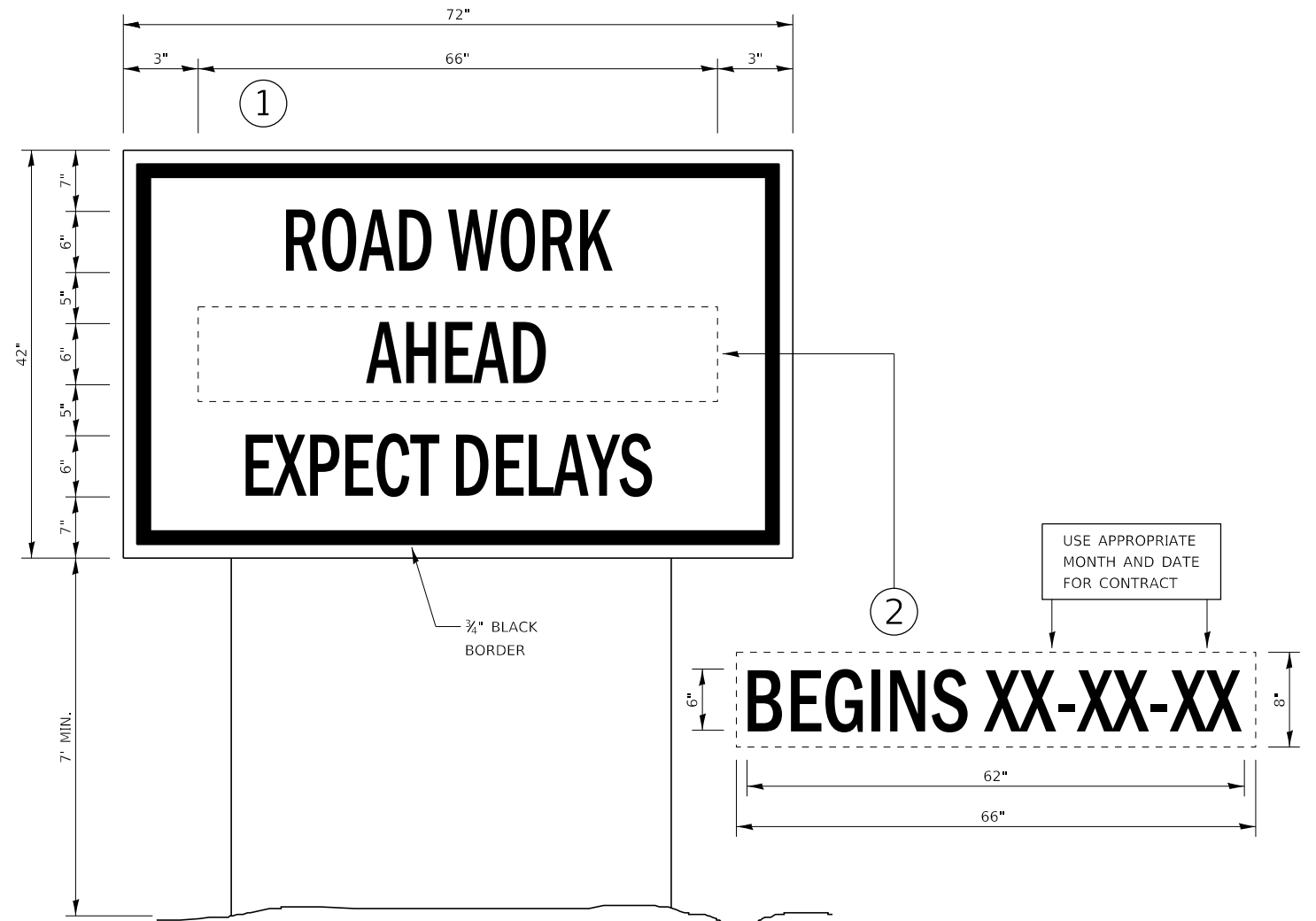
USER NAME = MARINIEJ	DESIGNED - EVAN MARINI	REVISED -
PLOT SCALE = 3,9382' / mm	DRAWN - EVAN MARINI	REVISED -
PLOT DATE = 3/20/2019	CHECKED - RON WOODSHANK	REVISED -
	DATE - 1/22/2019	REVISED -

**STATE OF ILLINOIS  
DEPARTMENT OF TRANSPORTATION**

**CLASS B PATCHING DETAILS**

SCALE: SHEET 2 OF 2 SHEETS STA. TO STA.

F.A.P. RTE.	SECTION	COUNTY	TOTAL SHEETS	SHEET NO.
68	D3 US 34/IL 23 PP 2020-3	LASALLE	8	7
CONTRACT NO. 66K01				
ILLINOIS FED. AID PROJECT				



### TEMPORARY INFORMATION SIGNING

**NOTES:**

1. USE 6" D BLACK LETTERING ON FLUORESCENT ORANGE BACKGROUND.
2. ERECT SIGNS AT LOCATIONS IN ADVANCE OF THE "ROAD CONSTRUCTION AHEAD" SIGNS AS DIRECTED BY THE ENGINEER.
3. ERECT SIGN ① WITH INSTALLED PANEL ② A MINIMUM OF ONE WEEK PRIOR TO THE START OF THE LANE CLOSURE.
4. REMOVE PANEL ② ON THAT DATE.
5. SEE SPECIAL PROVISION "TEMPORARY INFORMATION SIGNING" FOR ADDITIONAL INFORMATION.
6. WILL BE PAID FOR PER SQ FT AS "TEMPORARY INFORMATION SIGNING". EACH SIGN = 21 SQ FT AND THE DATE PANEL ② WILL NOT BE MEASURED SEPARATELY FOR PAYMENT.

FILE NAME =	USER NAME = MARINIEJ	DESIGNED - EVAN MARINI	REVISED -	<b>STATE OF ILLINOIS DEPARTMENT OF TRANSPORTATION</b>	<b>DETAILS</b>	F.A.P. RTE.	SECTION	COUNTY	TOTAL SHEETS	SHEET NO.	
pwt\planroom\dtd\illinois.gov\FWIDOT\Documents\DOT	offices\dist\ct\3\Projects\0366K01\CADData\66K01-cover.dgn	DRAWN - EVAN MARINI	REVISED -			68	D3 US 34/IL 23 PP 2020-3	LASALLE	8	8	
Default	PLOT SCALE = 3.9382 / mm	CHECKED - RON WOODSHANK	REVISED -			CONTRACT NO. 66K01					
	PLOT DATE = 3/20/2019	DATE - 1/22/2019	REVISED -			ILLINOIS FED. AID PROJECT					