

STATE OF ILLINOIS
DEPARTMENT OF TRANSPORTATION

F.A.P. RTE.	SECTION	COUNTY	TOTAL SHEETS	SHEET NO.
71	D3 IL 54 PP 2020-4	FORD	10	1
		ILLINOIS	CONTRACT NO. 66K02	

INDEX OF SHEETS

1. COVER SHEET
2. GENERAL NOTES
3. SUMMARY OF QUANTITIES
4. TYPICAL SECTIONS
- 5-7. SCHEDULES
- 8-9. CLASS B PATCHING DETAILS
10. DETAILS

STANDARDS

- | | |
|-----------|--|
| 701001-02 | OFF-ROAD OPERATIONS 2L, 2W, MORE THAN 15' (4.5 m) AWAY |
| 701006-05 | OFF-ROAD OPERATIONS 2L, 2W, 15' (4.5 m) TO 24" (600 mm) FROM PAVEMENT EDGE |
| 701336-07 | LANE CLOSURE, 2L, 2W, WORK AREAS IN SERIES, FOR SPEEDS ≥ 45 MPH |
| 701501-06 | URBAN LANE CLOSURE, 2L, 2W UNDIVIDED |
| 701901-08 | TRAFFIC CONTROL DEVICES |

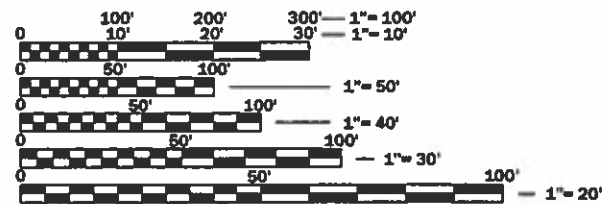
**PROPOSED
HIGHWAY PLANS**

**FAP ROUTE 71 (IL 54)
SECTION D3 IL 54 PP 2020-4
PROJECT
PAVEMENT PATCHING
FORD COUNTY**

C-93-086-19

END IMPROVEMENT
± 130' E. OF CHRUCH ST.
IN GIBSON CITY
LOG MILE 6.11

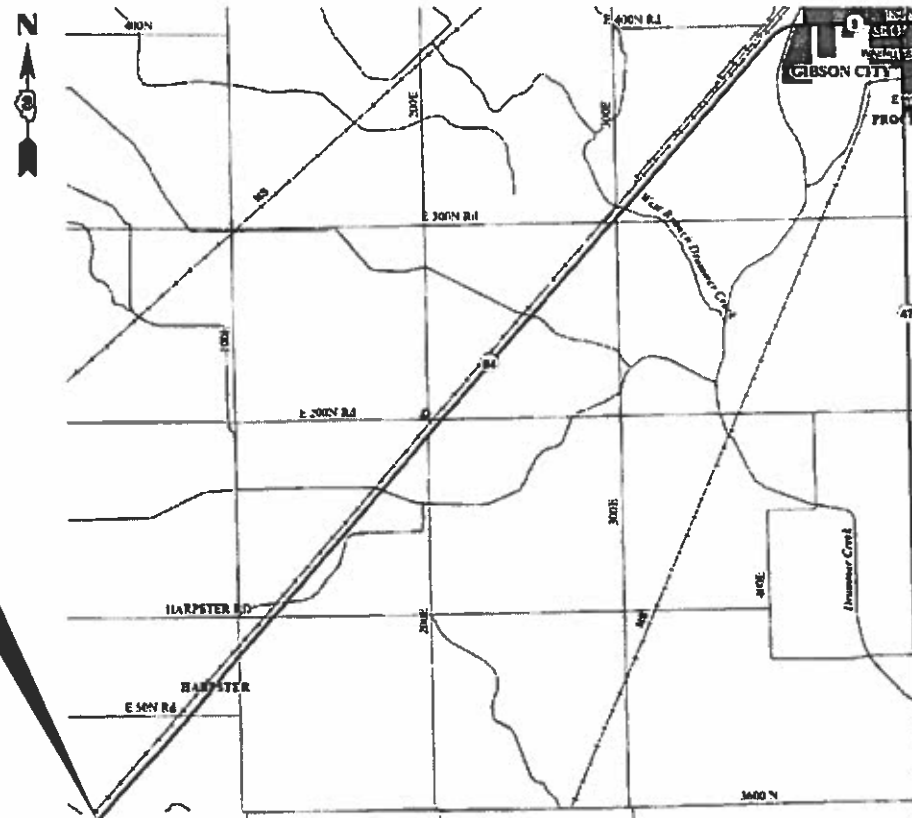
BEGIN IMPROVEMENT
INTERSECTION OF IL 54
AND E. 00 N. RD.
(CHAMPAIGN CO. LN.)
LOG MILE 0.00



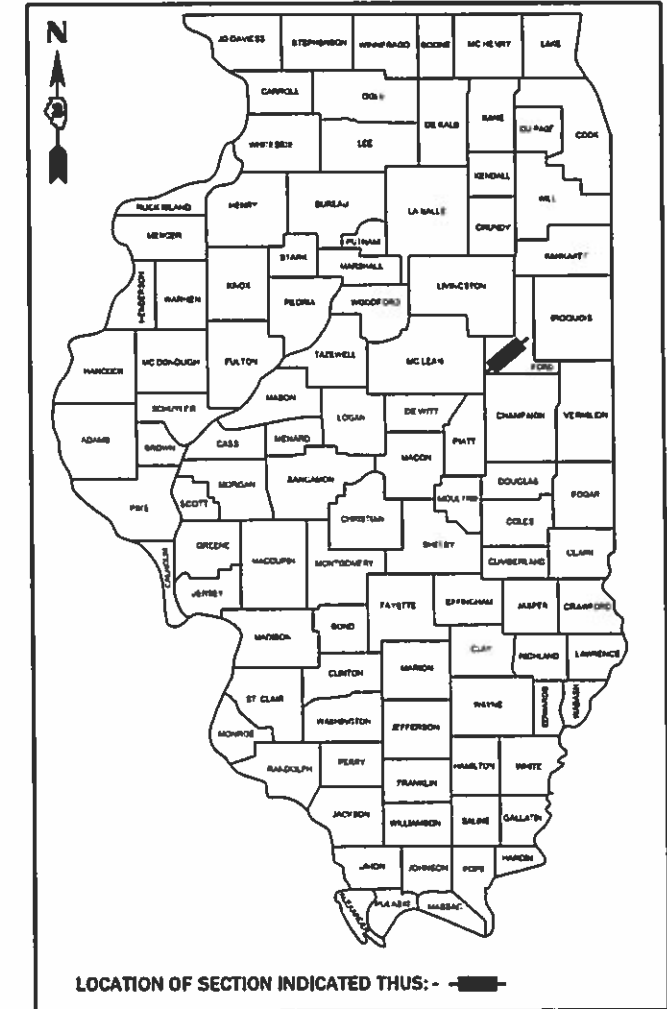
FULL SIZE PLANS HAVE BEEN PREPARED USING STANDARD ENGINEERING SCALES. REDUCED SIZED PLANS WILL NOT CONFORM TO STANDARD SCALES. IN MAKING MEASUREMENTS ON REDUCED PLANS, THE ABOVE SCALES MAY BE USED.

J.U.L.I.E.
JOINT UTILITY LOCATION INFORMATION FOR EXCAVATION
1-800-892-6123
OR 811

PROJECT ENGINEER JOE KANNEL P.E.
UNIT CHIEF RON WOODSHANK
DISTRICT 3 NO. (815) 434-6131
CONTRACT NO. 66K02



GROSS LENGTH = 32261 FT. = 6.11 MILE
NET LENGTH = 32261 FT. = 6.11 MILE



FUNCTIONAL CLASSIFICATION
RURAL
MAJOR COLLECTOR
F.A.P. ROUTE 71 (IL 54)
2017 ADT = 1300
P.V. 76.92% S.U. 10.77% M.U. 12.31%

STATE OF ILLINOIS
DEPARTMENT OF TRANSPORTATION

SUBMITTED 3-28-2019
[Signature]
REGIONAL ENGINEER

May 10 2019
[Signature]
ENGINEER OF DESIGN AND ENVIRONMENT

May 10 2019
[Signature]
DIRECTOR OF HIGHWAYS PROJECT IMPLEMENTATION

**PRINTED BY THE AUTHORITY
OF THE STATE OF ILLINOIS**

GENERAL NOTES

FOR STABILIZATION, ALL TYPE III BARRICADES WILL REQUIRE A MINIMUM OF FOUR SAND BAGS PER BARRICADE.

ALL EXCAVATED MATERIAL, WHICH INCLUDES DIGGING OR GRADING OF ANY SOIL OR FILL MATERIAL, WITH THE EXCEPTION OF AGGREGATE FILLS, MUST BE INCORPORATED WITHIN THE IDOT RIGHT OF WAY DUE TO ENVIRONMENTAL DOCUMENTATION REQUIREMENTS.

ANY REFERENCE TO A STANDARD IN THESE PLANS SHALL BE INTERPRETED TO MEAN THE EDITION AS INDICATED BY THE SUBNUMBER SHOWN IN THE LIST OF STANDARDS OR THE COPY INCLUDED IN THESE PLANS.

THE CONTRACTOR SHALL CONTACT JULIE AT LEAST 48 HOURS PRIOR TO EXCAVATION TO DETERMINE WHICH UTILITIES ARE IN THE AREA.

THE EXISTING CONCRETE PAVEMENT AROUND THE DETECTOR LOOPS SHALL BE AVOIDED UNLESS THE ENGINEER DETERMINES THAT PAVEMENT PATCHING IS REQUIRED. IF PATCHING FALLS WITHIN THE DETECTOR LOOP AREA, CONTACT TRAFFIC SIGNAL SECTION AT 815-434-8506.

COMMITMENTS

STATE OF ILLINOIS
DEPARTMENT OF TRANSPORTATION
DISTRICT THREE
AS BUILT INFORMATION

SUPERVISING CONSTRUCTION FIELD ENGINEER

RESIDENT ENGINEER / TECHNICIAN

START & END DATES
OF CONSTRUCTION:

INSPECTORS:

STATE OF ILLINOIS
DEPARTMENT OF TRANSPORTATION
DISTRICT THREE

PREPARED BY: *Don Basil*
DISTRICT STUDIES & PLANS ENGINEER

DATE: 3-19-19

EXAMINED BY: *[Signature]*
DISTRICT CONSTRUCTION ENGINEER

[Signature]
DISTRICT MATERIALS ENGINEER

[Signature]
DISTRICT OPERATIONS ENGINEER

FILE NAME *	USER NAME * MARINIEJ	DESIGNED - EVAN MARINI	REVISED -
pw:\planroom.dot\illinois.gov\PWDOT\Documents\IDOT	Office\District 3\Projects\0366K02\CADData\66K02-cover.dgn	DRAWN - EVAN MARINI	REVISED -
Default	PLOT SCALE = 3.9402 / mm	CHECKED - RON WOODSHANK	REVISED -
	PLOT DATE = 3/11/2019	DATE - 1/22/2019	REVISED -

STATE OF ILLINOIS
DEPARTMENT OF TRANSPORTATION

GENERAL NOTES

SCALE: SHEET 1 OF 1 SHEETS STA. TO STA.

F.A.P. RTE.	SECTION	COUNTY	TOTAL SHEETS	SHEET NO.
71	D3 IL 54 PP 2020-4	FORD	10	2
ILLINOIS FED. AID PROJECT CONTRACT NO. 66K02				

CODE NO.	ITEM	UNIT	TOTAL QUANTITY	CONSTR. CODE	
				CONTRACT MAINTENANCE	
				100% STATE	
				ROADWAY	
				0006	
				RURAL	
4200060	WELDED WIRE REINFORCEMENT	SQ YD	270		270
44200956	CLASS B PATCHES, TYPE II, 9 INCH	SQ YD	72		72
44200962	CLASS B PATCHES, TYPE III, 9 INCH	SQ YD	22		22
44200964	CLASS B PATCHES, TYPE IV, 9 INCH	SQ YD	72		72
44201007	CLASS B PATCHES, TYPE II, 13 INCH	SQ YD	941		941
44201011	CLASS B PATCHES, TYPE III, 13 INCH	SQ YD	162		162
44201013	CLASS B PATCHES, TYPE IV, 13 INCH	SQ YD	29		29
44201299	DOWEL BARS 1 1/2"	EACH	2180		2180
44213200	SAW CUTS	FOOT	5702		5702
44213204	TIE BARS 3/4"	EACH	35		35
67100100	MOBILIZATION	L SUM	1		1
X7010216	TRAFFIC CONTROL AND PROTECTION, (SPECIAL)	L SUM	1		1
Z0017099	DOWEL BAR ASSEMBLY	EACH	19		19
Z0030850	TEMPORARY INFORMATION SIGNING	SQ FT	42		42

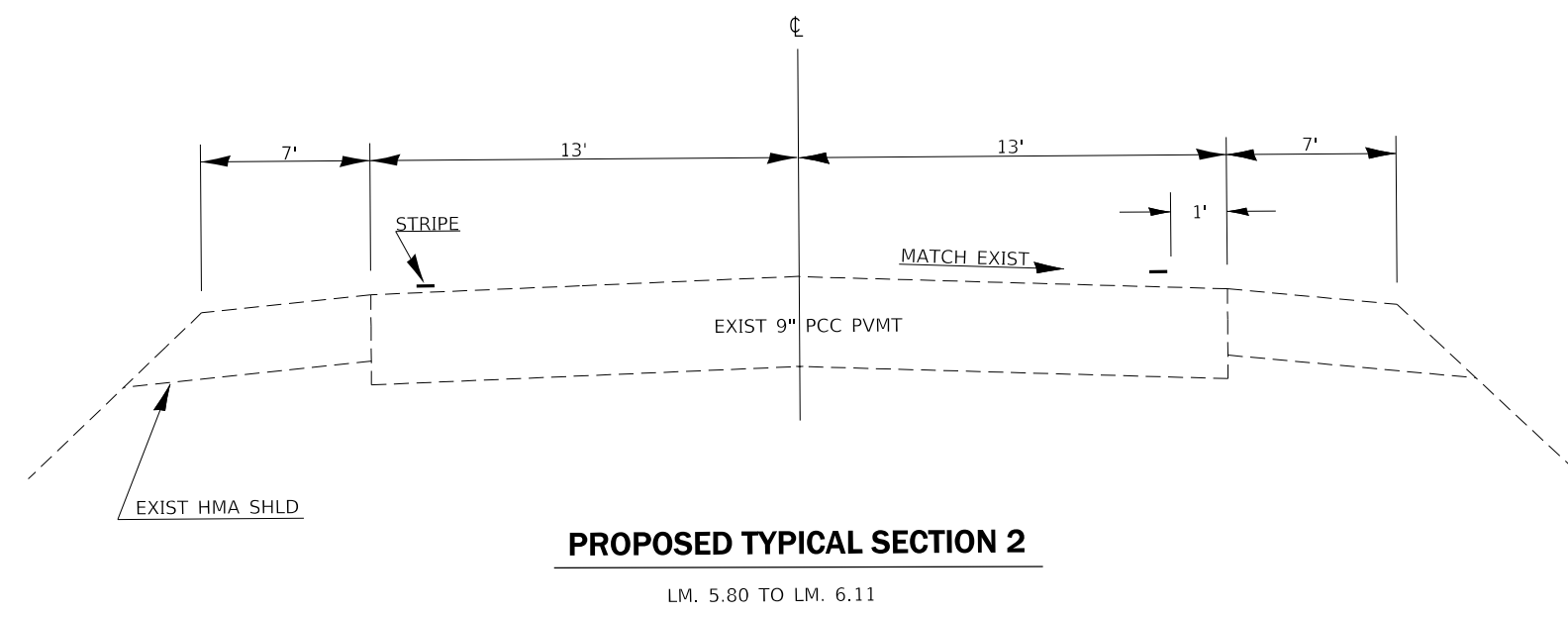
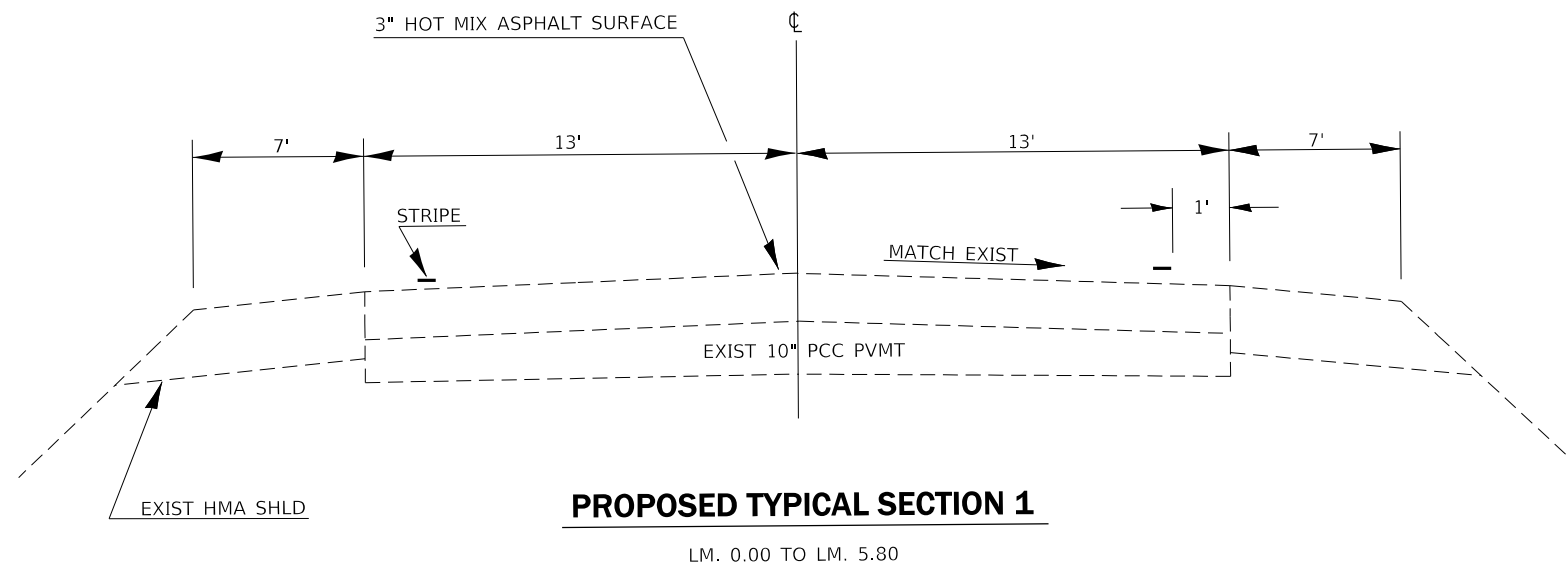
FILE NAME =	USER NAME = MARINEJ	DESIGNED - EVAN MARINI	REVISED -
pwc\planroom.d\illinois.gov\PW\DOT\Documents\DOT	Offices\District 3\Projects\ID366K02\CADData\66K02-cover.dgn	DRAWN - EVAN MARINI	REVISED -
Default	PLOT SCALE = 3.9354 / mm	CHECKED - RON WOODSHANK	REVISED -
	PLOT DATE = 3/26/2019	DATE - 1/22/2019	REVISED -

**STATE OF ILLINOIS
DEPARTMENT OF TRANSPORTATION**

SUMMARY OF QUANTITIES

SCALE: SHEET 1 OF 1 SHEETS STA. TO STA.

F.A.P. RTE.	SECTION	COUNTY	TOTAL SHEETS	SHEET NO.
71	D3 IL 54 PP 2020-4	FORD	10	3
CONTRACT NO. 66K02				
ILLINOIS FED. AID PROJECT				



FILE NAME =	USER NAME = MARINEJ	DESIGNED - EVAN MARINI	REVISED -	STATE OF ILLINOIS DEPARTMENT OF TRANSPORTATION	TYPICAL SECTION	F.A.P RTE.	SECTION	COUNTY	TOTAL SHEETS	SHEET NO.	
		DRAWN - EVAN MARINI	REVISED -			71	D3 IL 54 PP 2020-4	FORD	10	4	
		CHECKED - RON WOODSHANK	REVISED -			CONTRACT NO. 66K02					
		DATE - 1/22/2019	REVISED -			SCALE:	SHEET 1	OF 1	SHEETS	STA.	TO STA.

PATCHING SCHEDULE

EASTBOUND LANE								
LOCATION	PATCH LENGTH	CLASS B			DOWEL BARS 1 1/2"	SAW CUTS	WELDED WIRE REINF.	TIE BARS 3/4"
		TYPE	TYPE	TYPE				
		II 13"	III 13"	IV 13"				
LOG MILE	(FT)	SQ YD	SQ YD	SQ YD	EACH	FOOT	SQ YD	EACH
0.00	6	9			20	48		
0.00	6	9			20	48		
0.20	16		23		20	68	23	
0.30	6	9			20	48		
0.30	10	14			20	56		
0.40	6	9			20	48		
0.50	10	14			20	56		
0.60	10	14			20	56		
0.70	8	12			20	52		
0.90	6	9			20	48		
0.90	6	9			20	48		
1.20	10	14			20	56		
1.30	12		17		20	60	17	
1.40	15		22		20	66	22	
1.60	6	9			20	48		
1.70	15		22		20	66	22	
1.70	6	9			20	48		
1.90	8	12			20	52		
1.90	8	12			20	52		
2.00	6	9			20	48		
2.00	6	9			20	48		
2.40	6	9			20	48		
2.50	6	9			20	48		
2.60	6	9			20	48		
2.70	8	12			20	52		
TOTALS		221	84		500	1316	84	

PATCHING SCHEDULE

EASTBOUND LANE								
LOCATION	PATCH LENGTH	CLASS B			DOWEL BARS 1 1/2"	SAW CUTS	WELDED WIRE REINF.	TIE BARS 3/4"
		TYPE	TYPE	TYPE				
		II 13"	III 13"	IV 13"				
LOG MILE	(FT)	SQ YD	SQ YD	SQ YD	EACH	FOOT	SQ YD	EACH
2.90	6	9			20	48		
3.00	6	9			20	48		
3.20	20			29	20	76	29	10
3.40	10	14			20	56		
3.60	6	9			20	48		
3.80	6	9			20	48		
3.80	10	14			20	56		
4.00	8	12			20	52		
4.00	8	12			20	52		
4.10	6	9			20	48		
4.10	6	9			20	48		
4.20	8	12			20	52		
4.20	6	9			20	48		
4.30	8	12			20	52		
4.30	10	14			20	56		
4.40	10	14			20	56		
4.60	8	12			20	52		
4.70	10	14			20	56		
4.80	6	9			20	48		
4.90	8	12			20	52		
4.90	8	12			20	52		
5.00	10	14			20	56		
5.10	6	9			20	48		
5.10	10	14			20	56		
5.20	8	12			20	52		
5.20	15		22		20	66	22	
5.50	15		22		20	66	22	
TOTALS		275	44	29	540	1448	73	10

PATCHING SCHEDULE

WESTBOUND LANE						
LOCATION	PATCH LENGTH	CLASS B		DOWEL BARS 1 1/2"	SAW CUTS	WELDED WIRE REINF.
		TYPE II 13"	TYPE III 13"			
LOG MILE	(FT)	SQ YD	SQ YD	EACH	FOOT	SQ YD
5.4	6	9		20	48	
5.4	6	9		20	48	
5.4	8	12		20	52	
5.3	6	9		20	48	
5.2	10	14		20	56	
5.2	6	9		20	48	
5.0	8	12		20	52	
4.9	8	12		20	52	
4.8	8	12		20	52	
4.7	8	12		20	52	
4.5	10	14		20	56	
4.3	12		17	20	60	17
4.2	6	9		20	48	
4.0	10	14		20	56	
4.0	8	12		20	52	
3.8	6	9		20	48	
3.6	8	12		20	52	
3.5	6	9		20	48	
3.3	6	9		20	48	
3.3	6	9		20	48	
3.1	8	12		20	52	
3.1	6	9		20	48	
TOTALS		228	17	440	1124	17

PATCHING SCHEDULE

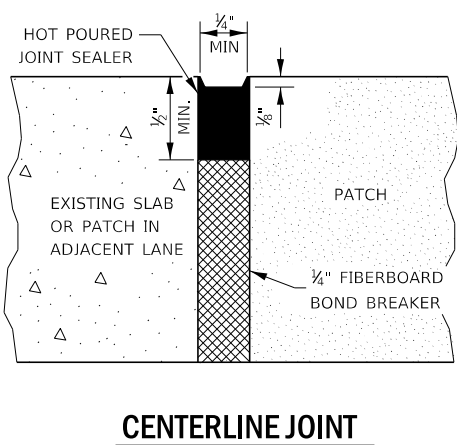
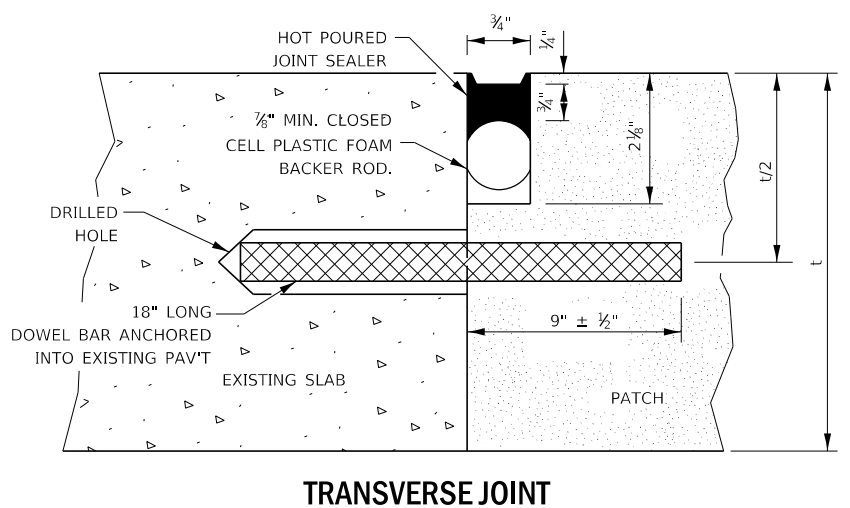
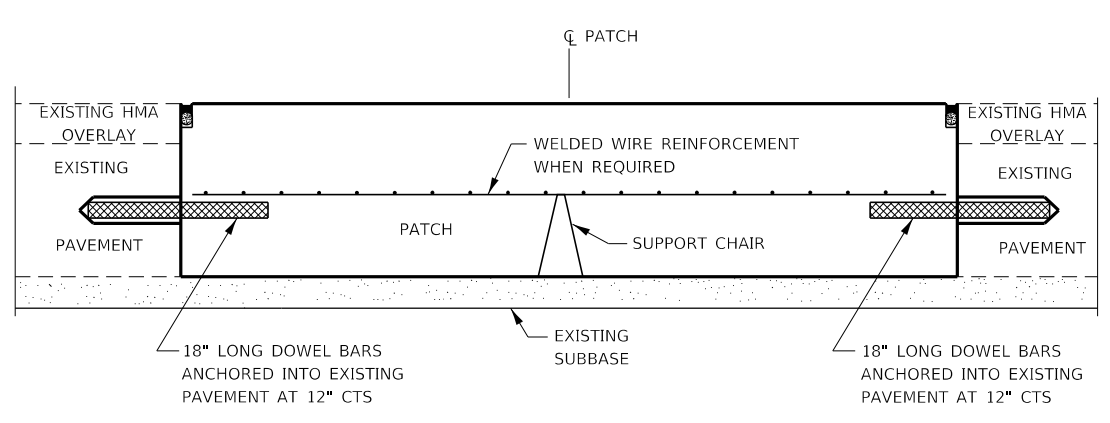
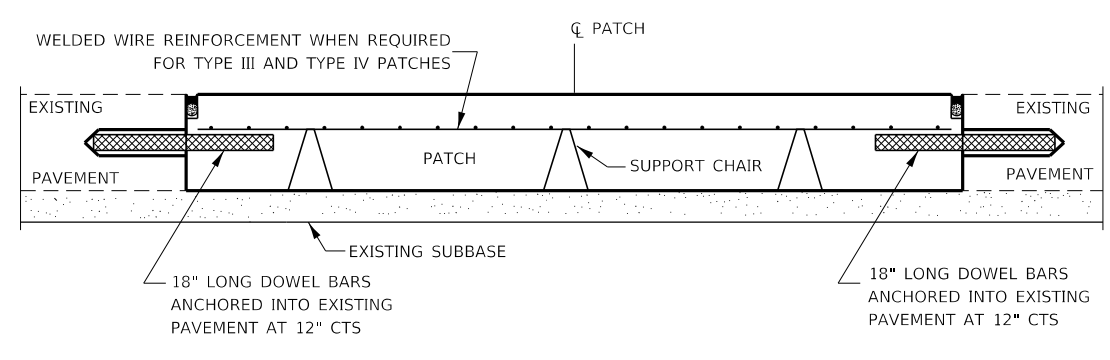
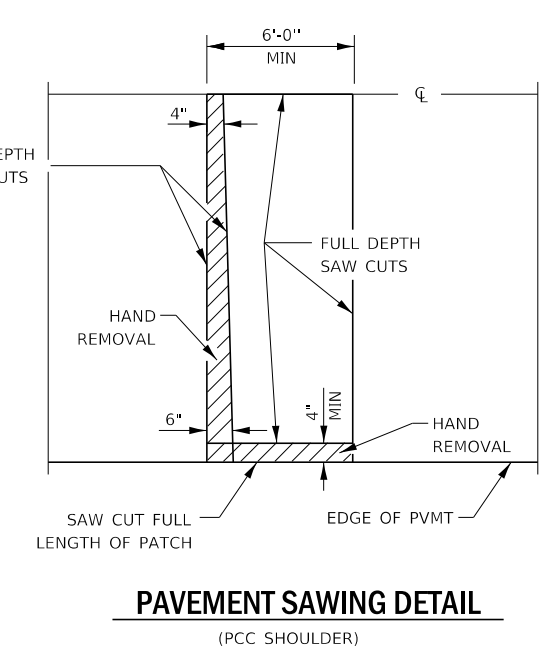
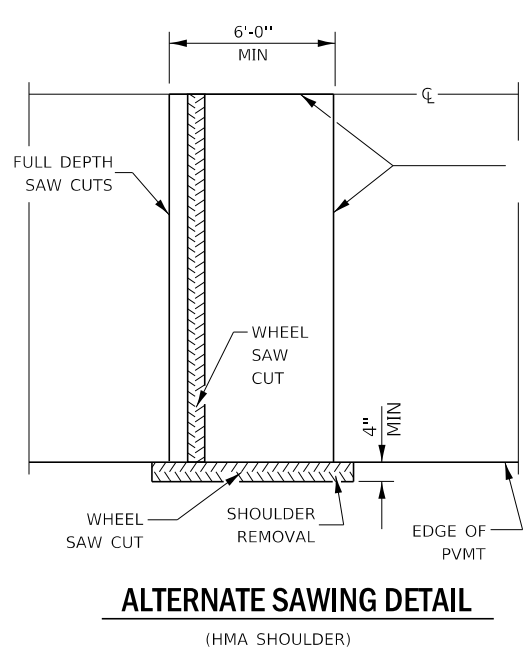
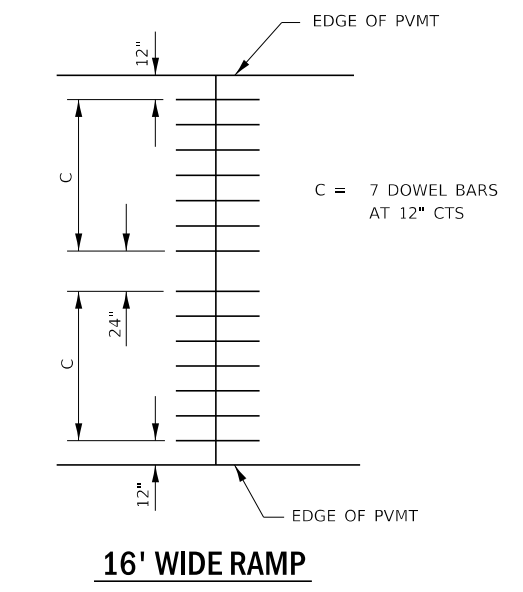
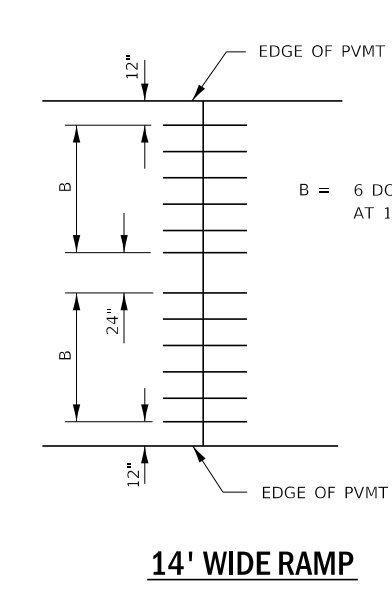
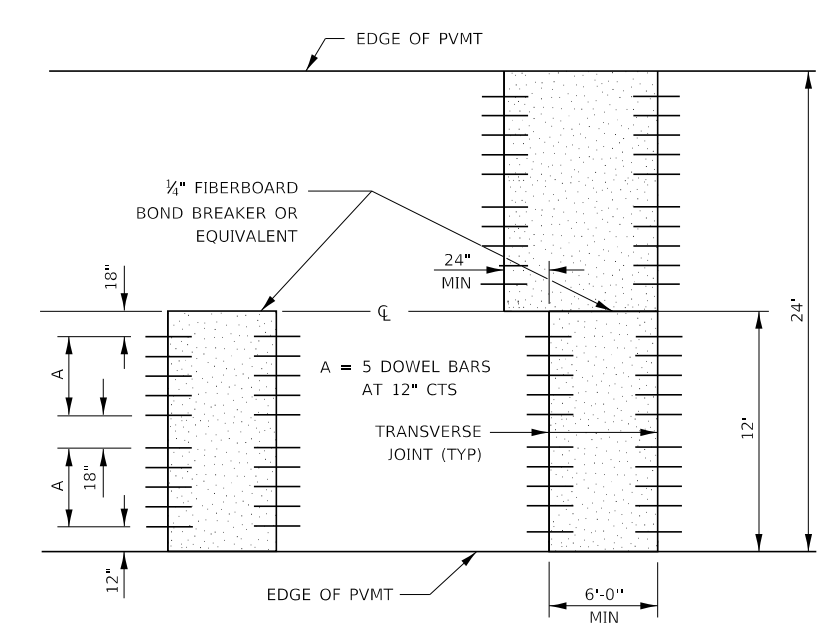
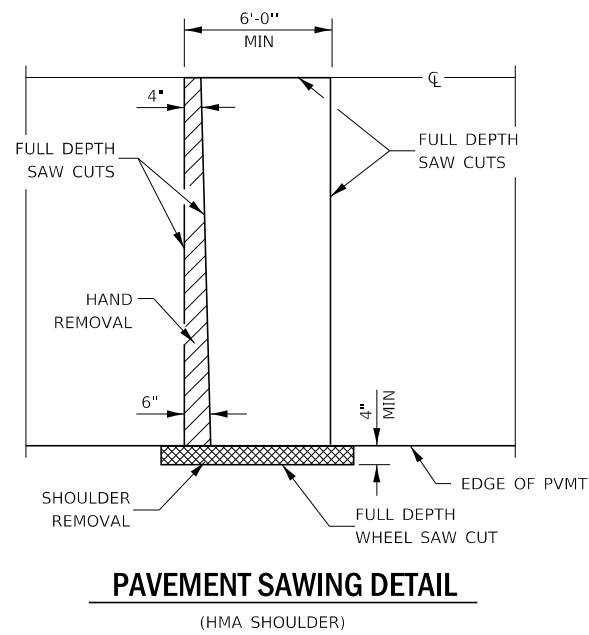
WESTBOUND LANE						
LOCATION	PATCH LENGTH	CLASS B		DOWEL BARS 1 1/2"	SAW CUTS	WELDED WIRE REINF.
		TYPE II 13"	TYPE III 13"			
LOG MILE	(FT)	SQ YD	SQ YD	EACH	FOOT	SQ YD
3.1	6	9		20	48	
3.1	6	9		20	48	
2.6	8	12		20	52	
2.6	6	9		20	48	
2.6	6	9		20	48	
2.5	6	9		20	48	
2.5	6	9		20	48	
2.3	6	9		20	48	
2.2	6	9		20	48	
2.1	6	9		20	48	
2.1	8	12		20	52	
1.8	6	9		20	48	
1.8	6	9		20	48	
1.6	8	12		20	52	
1.5	6	9		20	48	
1.2	12		17	20	60	17
1.1	6	9		20	48	
1.1	6	9		20	48	
0.8	6	9		20	48	
0.4	6	9		20	48	
0.3	6	9		20	48	
0.3	10	14		20	56	
0.1	10	14		20	56	
TOTALS		217	17	460	1144	17

PATCHING SCHEDULE

EASTBOUND LANE								
LOCATION	PATCH LENGTH	CLASS B			DOWEL BARS 1 1/2"	SAW CUTS	WELDED WIRE REINF.	TIE BARS 3/4"
		TYPE II 9"	TYPE III 9"	TYPE IV 9"				
LOG MILE	(FT)	SQ YD	SQ YD	SQ YD	EACH	FOOT	SQ YD	EACH
5.90	6	9			20	48		
6.00	6	9			20	48		
6.00	20			29	20	76	29	10
6.00	15		22		20	66	22	
6.00	6	9			20	48		
6.10	6				20	48		
TOTALS		27	22	29	120	334	51	10

PATCHING SCHEDULE

WESTBOUND LANE							
LOCATION	PATCH LENGTH	CLASS B		DOWEL BARS 1 1/2"	SAW CUTS	WELDED WIRE REINF.	TIE BARS 3/4"
		TYPE II 9"	TYPE IV 9"				
LOG MILE	(FT)	SQ YD	SQ YD	EACH	FOOT	SQ YD	EACH
6.1	6	9		20	48		
6.1	6	9		20	48		
6.0	6	9		20	48		
6.0	6	9		20	48		
5.9	6	9		20	48		
5.8	30		43	20	96	43	15
TOTALS		45	43	120	336	43	15



PAVEMENT THICKNESS	DOWEL BAR DIAMETER	HOLE DIAMETER
8" OR GREATER	1 1/2"	1 3/8"
7" THRU 7.99"	1 1/4"	1 3/8"
LESS THAN 7"	1"	1 1/8"

GENERAL NOTES

THE TRANSVERSE JOINTS FOR CLASS B PATCHES SHALL ALIGN WITH JOINTS OR CRACKS IN THE ADJACENT LANE WHENEVER POSSIBLE.

SEE STANDARD 420701 FOR DETAILS OF PAVEMENT WELDED WIRE REINFORCEMENT.

MODEL: C:\p\full
 FILE: NAME: \\p\sub\barroom\dot\illinois.gov\p\DOT\Documents\STUDOT_Offices\B4r\4\3\Projects\66K02\ADD\66K02-cv-rec.dgn

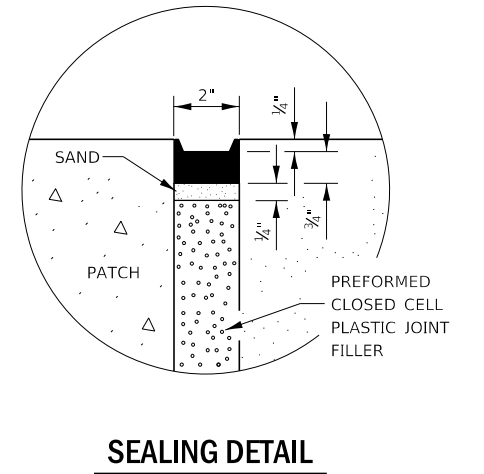
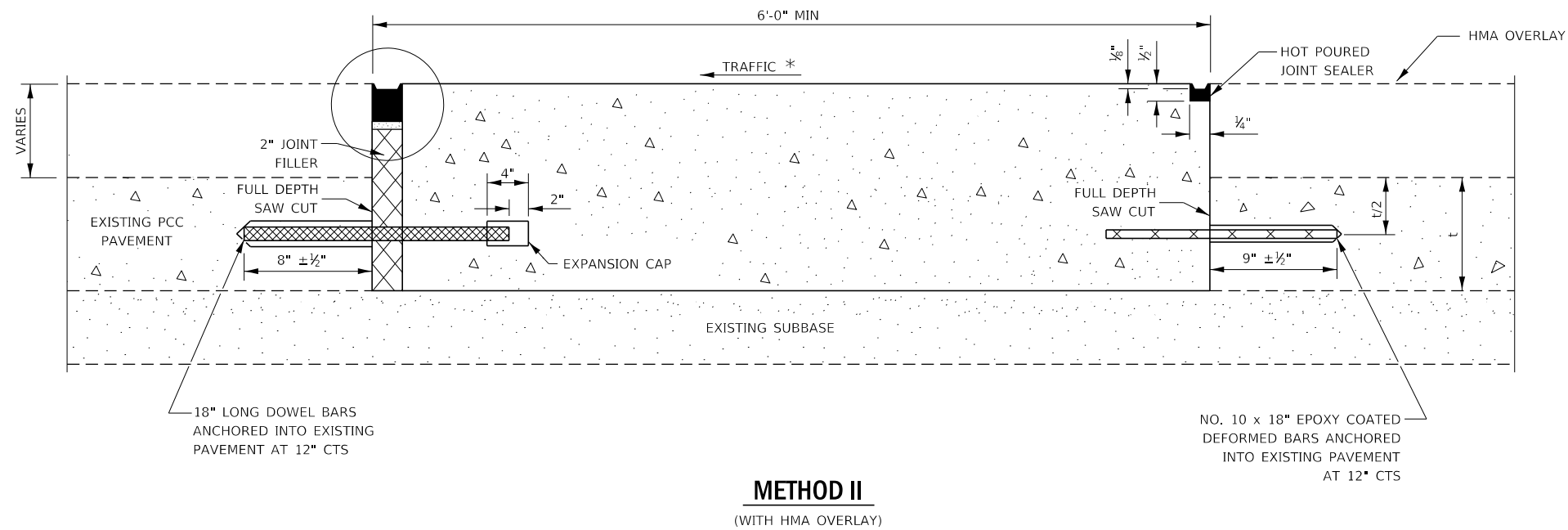
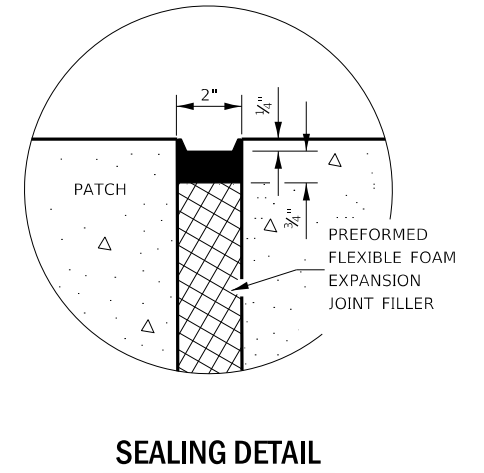
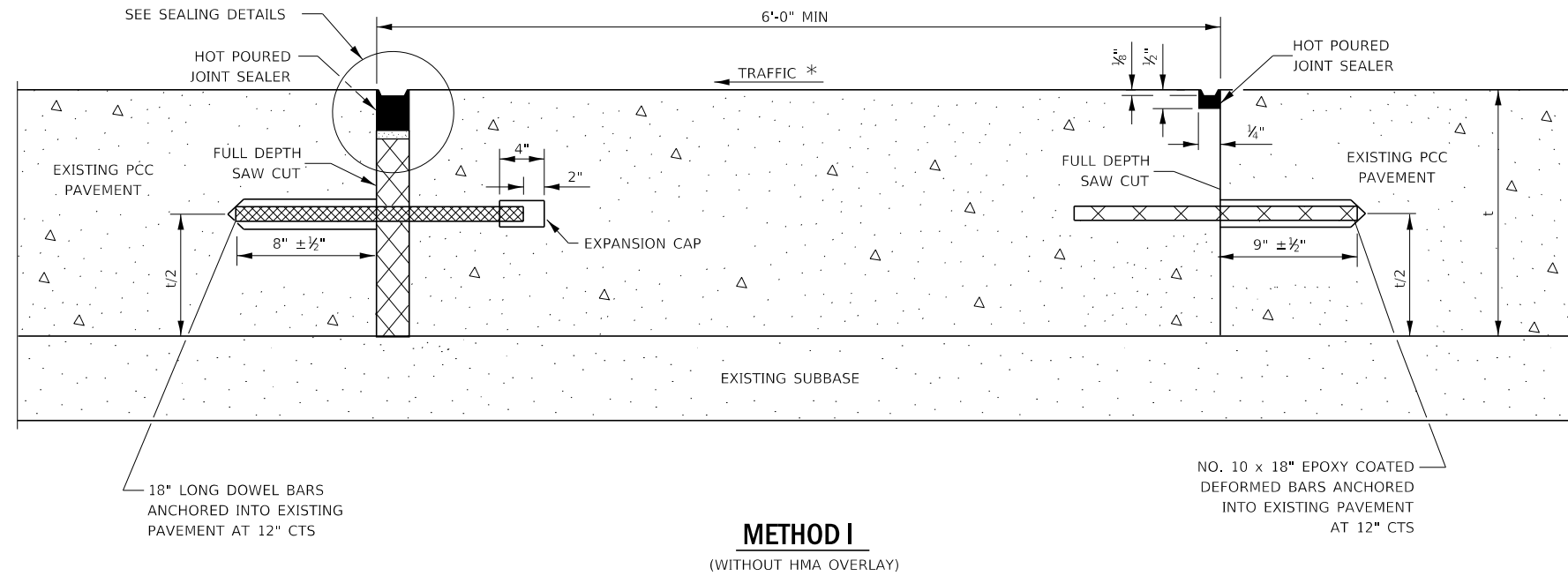
USER NAME = MARINIEJ	DESIGNED - EVAN MARINI	REVISED -
PLOT SCALE = 3,9403' / mm	DRAWN - EVAN MARINI	REVISED -
PLOT DATE = 3/26/2019	CHECKED - RON WOODSHANK	REVISED -
	DATE - 1/22/2019	REVISED -

**STATE OF ILLINOIS
DEPARTMENT OF TRANSPORTATION**

CLASS B PATCHING DETAILS

SCALE: SHEET 1 OF 2 SHEETS STA. TO STA.

F.A.P. RTE. 71	SECTION D3 IL 54 PP 2020-4	COUNTY FORD	TOTAL SHEETS 10	SHEET NO. 8
CONTRACT NO. 66K02				
ILLINOIS FED. AID PROJECT				



NOTE

* WHEN RE-ESTABLISHING A TRANSVERSE EXPANSION JOINT ON A TWO-WAY ROAD, REVERSE THE ORIENTATION OF THE DOWEL BARS WITH RESPECT TO TRAFFIC FOR ONE OF THE PATCHES SUCH THAT THE JOINT WILL BE CONTINUOUS ACROSS BOTH LANES.

MODEL: Default
FILE NAME: p:\p\j\lanroom.dwg; illinois.gov\FWID\DOT\Documents\DOT_Offices\District_3\Projects\366K02\CAD\366K02-cover.dgn

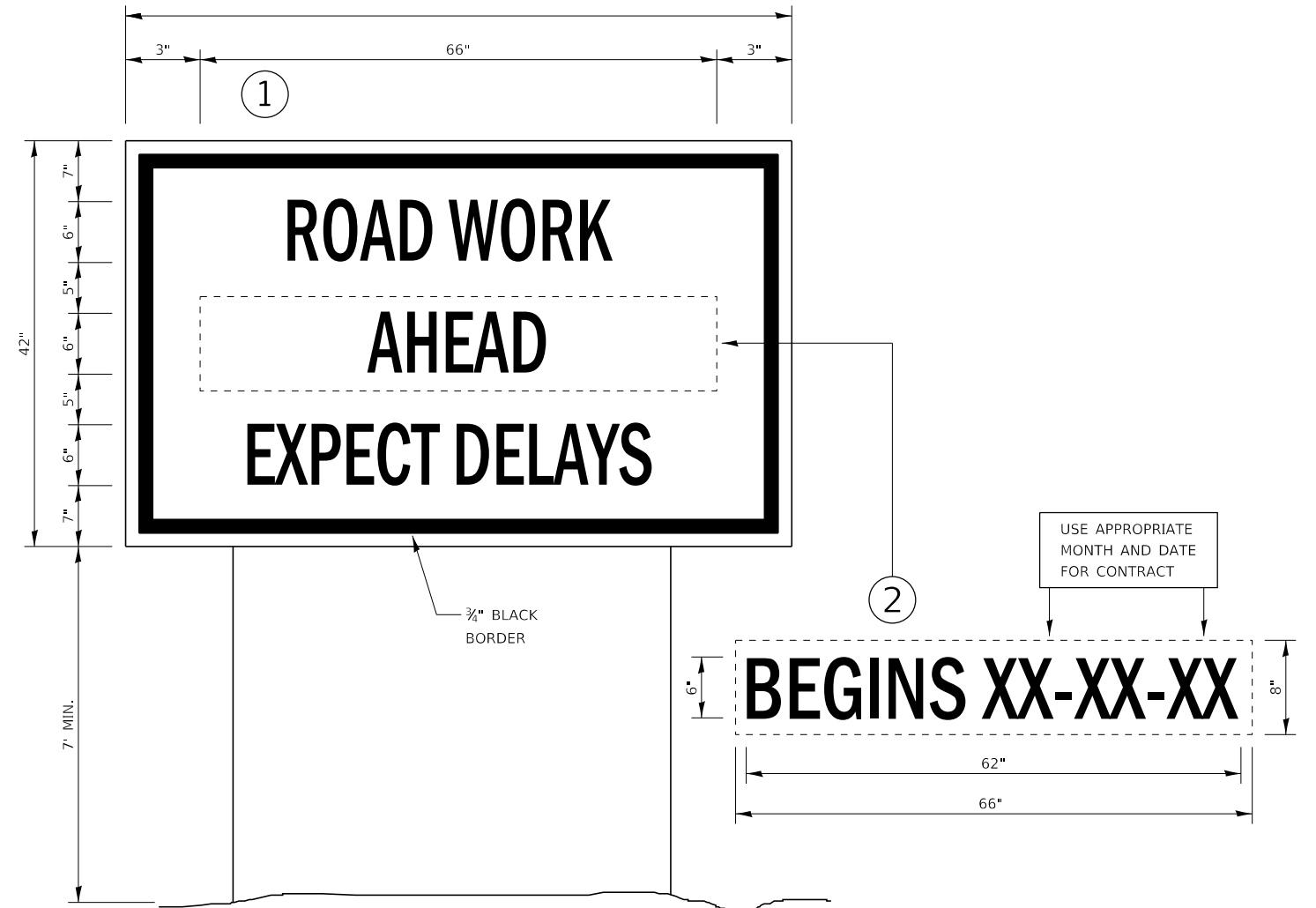
USER NAME = MARINIEJ	DESIGNED - EVAN MARINI	REVISED -
	DRAWN - EVAN MARINI	REVISED -
PLOT SCALE = 3/9468' / mm	CHECKED - RON WOODSHANK	REVISED -
PLOT DATE = 3/26/2019	DATE - 1/22/2019	REVISED -

STATE OF ILLINOIS
DEPARTMENT OF TRANSPORTATION

CLASS B PATCHING DETAILS

SCALE: SHEET 2 OF 2 SHEETS STA. TO STA.

F.A.P. RTE.	SECTION	COUNTY	TOTAL SHEETS	SHEET NO.
71	D3 IL 54 PP 2020-4	FORD	10	9
CONTRACT NO. 66K02				
ILLINOIS FED. AID PROJECT				



TEMPORARY INFORMATION SIGNING

NOTES:

1. USE 6" D BLACK LETTERING ON FLUORESCENT ORANGE BACKGROUND.
2. ERECT SIGNS AT LOCATIONS IN ADVANCE OF THE "ROAD CONSTRUCTION AHEAD" SIGNS AS DIRECTED BY THE ENGINEER.
3. ERECT SIGN ① WITH INSTALLED PANEL ② A MINIMUM OF ONE WEEK PRIOR TO THE START OF THE LANE CLOSURE.
4. REMOVE PANEL ② ON THAT DATE.
5. SEE SPECIAL PROVISION "TEMPORARY INFORMATION SIGNING" FOR ADDITIONAL INFORMATION.
6. WILL BE PAID FOR PER SQ FT AS "TEMPORARY INFORMATION SIGNING". EACH SIGN = 21 SQ FT AND THE DATE PANEL ② WILL NOT BE MEASURED SEPARATELY FOR PAYMENT.

FILE NAME =	USER NAME = MARINEJ	DESIGNED - EVAN MARINI	REVISED -	STATE OF ILLINOIS DEPARTMENT OF TRANSPORTATION	DETAILS			F.A.P RTE.	SECTION	COUNTY	TOTAL SHEETS	SHEET NO.
pw5\planroom\dot\illinois.gov\PWIDOT\Documents\DOT	Offices\District 3\Projects\0366K02\CADData\66K02-cover.dgn	DRAWN - EVAN MARINI	REVISED -					71	D3 IL 54 PP 2020-4	FORD	10	10
Default	PLOT SCALE = 3,9402"/mm	CHECKED - RON WOODSHANK	REVISED -		SCALE: SHEET 1 OF 1 SHEETS STA. TO STA.			CONTRACT NO. 66K02				
	PLOT DATE = 3/11/2019	DATE - 1/22/2019	REVISED -		ILLINOIS FED. AID PROJECT							